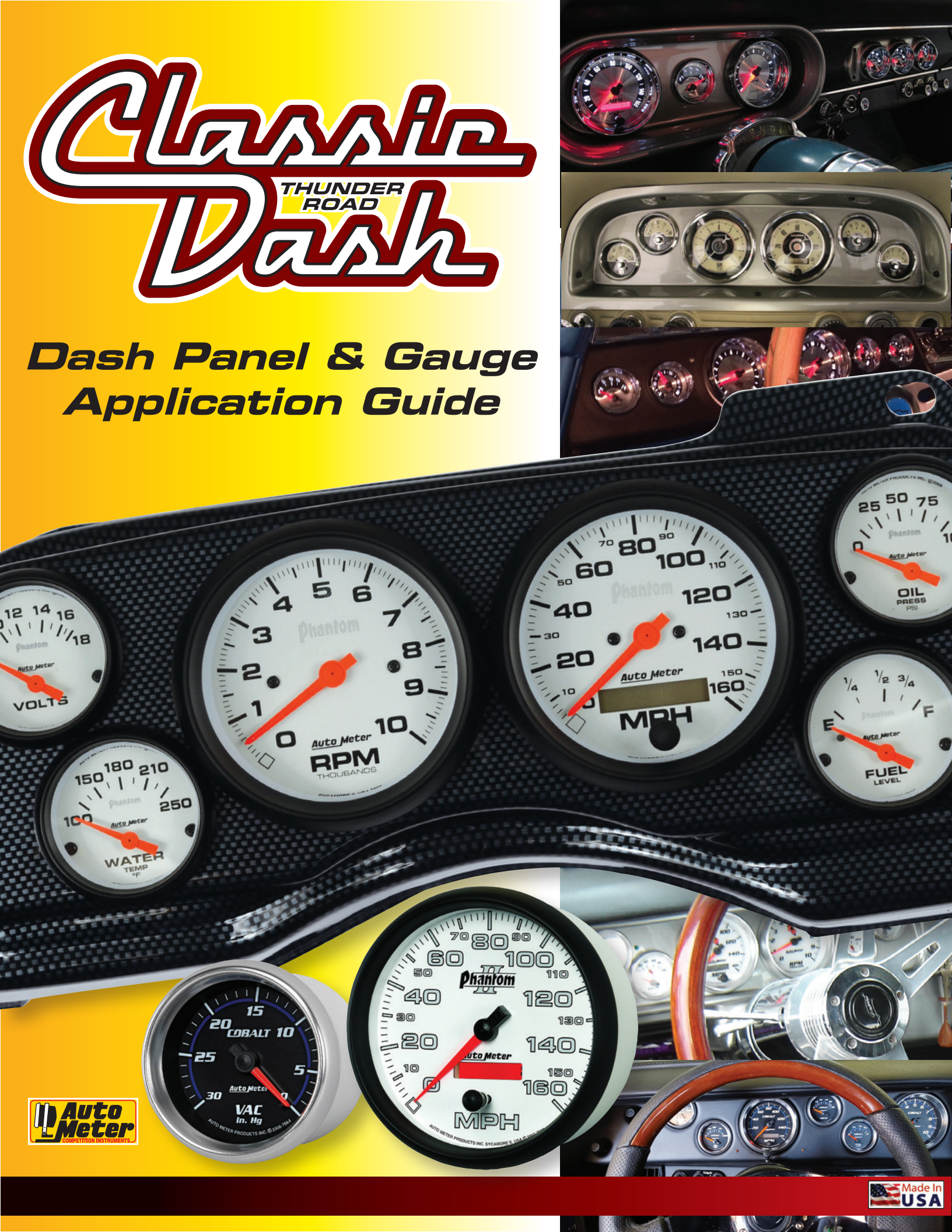


# Classic Dash

THUNDER ROAD

# Dash

## Dash Panel & Gauge Application Guide



# INTRODUCTION

Configuring a new dashboard installation can be a daunting task, given all the available options from Classic Dash. By way of example, we're dealing with three panel finishes, typically 15-18 gauge styles, and a host of accessories.

We've prepared this Application Guide to help simplify the process.

Next on the Guide is a description of what the package contains, followed by a list of available gauge options (some panels can accommodate either 3-3/8" or 5" diameter speedometer and tachometer, as well as 2-5/8" or 2-1/16" gauges).

Classic Dash has developed some other special wiring kits, including one for use when a late model LS motor is installed in an early Chevy.

GPS speedometers are becoming increasingly popular, and Classic Dash has developed a special kit that ensures that a quality satellite signal will be transmitted to the GPS.



Greg Wambold, President

# TABLE OF CONTENTS

1973-83 Chevy / GMC C / K Truck & Blazer / Jimmy.....	4	1982-86 Chevy S-10 .....	33
1984-87 Chevy / GMC C/K Truck & Blazer / Jimmy.....	5	1955-56 Chevy Bel Air or Nomad .....	34
1988-94 Chevy / GMC C/K Truck & Blazer / Jimmy.....	6	1957 Chevy Bel Air or Nomad.....	35
1960-63 Chevrolet C/K Truck (excludes GMC Trucks).....	7	1970-74 Challenger / Cuda .....	36
1964 Chevrolet C/K Truck (excludes GMC Trucks) .....	8	1968-70 Mopar B-Body (excludes Satellite Models).....	37
1965-66 Chevrolet C/K Truck (excludes GMC Trucks).....	9	1971-74 Charger/Roadrunner .....	38
1967-72 Chevy / GMC C/K Truck .....	10	1970-76 Mopar A-Body (excludes Swinger Models).....	39
1967-68 Camaro / Firebird .....	11	1964-66 Ford Mustang .....	40
1969 Camaro.....	12	1979-86 Ford Mustang .....	41
1970-78 Camaro .....	13	1987-89 Ford Mustang .....	42
1979-81 Camaro .....	14	1990-93 Ford Mustang .....	43
1982-89 Camaro .....	15	1994-04 Ford Mustang .....	44
1990-92 Camaro .....	16	1957-60 Ford Truck .....	45
1964 Chevelle / El Camino / Malibu .....	17	1961-66 Ford Truck .....	46
1965 Chevelle / El Camino / Malibu .....	18	1967-72 Ford Truck .....	47
1966 Chevelle / El Camino / Malibu .....	19	1973-79 Ford Truck .....	48
1967 Chevelle / El Camino / Malibu .....	20	1980-86 Ford Truck .....	49
1968 Chevelle / El Camino / Malibu .....	21	1987-95 Jeep YJ.....	50
1969 Chevelle / El Camino / Malibu .....	22	1967-68 Mercury Cougar .....	51
1970-72 Chevelle / El Camino / Malibu / Monte Carlo SS....	23	1969-70 Mercury Cougar .....	52
1963-67 Corvette .....	24	1967-69 Plymouth Barracuda, 1970-71 A-Body Rallye.....	53
1978-81 Malibu / Monte Carlo / El Camino.....	25	1969 Pontiac Firebird .....	54
1982-87 Malibu / Monte Carlo / El Camino.....	26	1970-81 Pontiac Firebird.....	55
1962-64 Nova / Chevy II .....	27	1964 Pontiac GTO / LeMans .....	56
1965 Nova / Chevy II.....	28	1965 Pontiac GTO / LeMans .....	57
1966-67 Nova / Chevy II .....	29	1966 Pontiac GTO / LeMans .....	58
1968 Nova / Chevy II.....	30	1967 Pontiac GTO / LeMans .....	59
1969-76 Nova / Chevy II .....	31	1968 Pontiac GTO / LeMans .....	60
1977-79 Chevy Nova.....	32	1970-72 Pontiac GTO / LeMans.....	61
Available Gauges .....	62		

# CLASSIC DASH APPLICATION GUIDE



Multiple gauge sizes are offered for this application.

## 1973-83 Chevy / GMC C/K Truck & Blazer/Jimmy

- |                                     |   |   |  |
|-------------------------------------|---|---|--|
| <b>Panel finish:</b>                | <input type="checkbox"/> Matte Black      | <input type="checkbox"/> Brushed Aluminum   | <input type="checkbox"/> Carbon Fiber  |
| <b>Gauge style: <b>Electric</b></b> | <input type="checkbox"/> AM C2            | <input type="checkbox"/> AM Carbon Fiber    | <input type="checkbox"/> AM Cobalt     |
|                                     | <input type="checkbox"/> AM NV            | <input type="checkbox"/> AM Phantom         | <input type="checkbox"/> AM Phantom II |
|                                     | <input type="checkbox"/> AM Sport Comp    | <input type="checkbox"/> AM Sport Comp II   | <input type="checkbox"/> AM Ultra-Lite |
|                                     | <input type="checkbox"/> AM Ultra-Lite II | <input type="checkbox"/> AM American Muscle | <input type="checkbox"/> AM GT         |
| <b>Mechanical</b>                   | <input type="checkbox"/> AM Ultra-Lite    | <input type="checkbox"/> AM Phantom         | <input type="checkbox"/> AM Sport Comp |

AM = Auto Meter

### COMPLETE PACKAGE COMES WITH...

- 5" Speedometer
  - 5" Tachometer
  - 2-1/16" Fuel Level Gauge
  - 2-1/16" Oil Pressure Gauge
  - 2-1/16" Water Temp. Gauge
  - 2-1/16" Volt Gauge
- Gauge size options:** 6-gauge panel with 3-3/8" and 2-1/16" gauges  
6-gauge panel with 5" and 2-5/8" gauges
- Control options:** N/A
- Vent options:** Available with or without vents
- Wiring options:**  Gauge wiring harness\*  
 Turning Signal, High Beam & Parking Brake Indicator (LED) Kit\*

\*Auto Meter electric gauge packages come with a wiring harness plus water temp and oil pressure sending units. However you must purchase a speedometer sending unit to match your transmission or a GPS receiver.  
Mechanical gauge packages do not come with a wiring harness.

### Applicable Accessories:

- GPS speedometer interface module
- Mechanical speedometer cable adapter
- Speed sensor pigtail GM 4LE60/4LE80
- Speed sensor pigtail GM 700R/4
- Gauge wiring harness w/LED kit
- Speedometer adapter for mechanical gauges
- Power Plus 20 series wiring kit
- LS engine tach wire harness
- LS plug and play tach adapter and harness
- LS motor installation kit
- LED and terminal kit
- Tach adapter
- LED gauge light dimmer switch

Steering column undercover is **INCLUDED** with purchase of dash panel.

# CLASSIC DASH APPLICATION GUIDE



Multiple gauge sizes are offered for this application.

## 1984-87 Chevy / GMC C/K Truck & Blazer/Jimmy

- |                                     |   |   |  |
|-------------------------------------|---|---|--|
| <b>Panel finish:</b>                | <input type="checkbox"/> Matte Black      | <input type="checkbox"/> Brushed Aluminum   | <input type="checkbox"/> Carbon Fiber  |
| <b>Gauge style: <b>Electric</b></b> | <input type="checkbox"/> AM C2            | <input type="checkbox"/> AM Carbon Fiber    | <input type="checkbox"/> AM Cobalt     |
|                                     | <input type="checkbox"/> AM NV            | <input type="checkbox"/> AM Phantom         | <input type="checkbox"/> AM Phantom II |
|                                     | <input type="checkbox"/> AM Sport Comp    | <input type="checkbox"/> AM Sport Comp II   | <input type="checkbox"/> AM Ultra-Lite |
|                                     | <input type="checkbox"/> AM Ultra-Lite II | <input type="checkbox"/> AM American Muscle | <input type="checkbox"/> AM GT         |
| <b>Mechanical</b>                   | <input type="checkbox"/> AM Ultra-Lite    | <input type="checkbox"/> AM Phantom         | <input type="checkbox"/> AM Sport Comp |

AM = Auto Meter

### COMPLETE PACKAGE COMES WITH...

- 5" Speedometer
  - 5" Tachometer
  - 2-1/16" Fuel Level Gauge
  - 2-1/16" Oil Pressure Gauge
  - 2-1/16" Water Temp. Gauge
  - 2-1/16" Volt Gauge
- Gauge size options:** 6-gauge panel with 3-3/8" and 2-1/16" gauges  
6-gauge panel with 5" and 2-5/8" gauges
- Control options:** N/A
- Vent options:** Available with or without vents
- Wiring options:**  Gauge wiring harness\*  
 Turning Signal, High Beam & Parking Brake Indicator (LED) Kit\*

\*Auto Meter electric gauge packages come with a wiring harness plus water temp and oil pressure sending units. However you must purchase a speedometer sending unit to match your transmission or a GPS receiver. Mechanical gauge packages do not come with a wiring harness.

### Applicable Accessories:

- GPS speedometer interface module
- Electric speedometer sending unit
- Speed sensor pigtail GM 4LE60/4LE80
- Speed sensor pigtail GM 700R/4
- Gauge wiring harness w/LED kit
- Power Plus 20 series wiring kit
- Speedometer adapter for mechanical gauges
- LS engine tach wire harness
- LS plug and play tach adapter and harness
- LS motor installation kit
- LED and terminal kit
- Tach adapter
- LED gauge light dimmer switch

Steering column undercover is INCLUDED with purchase of dash panel.

# CLASSIC DASH APPLICATION GUIDE



## 1988-94 Chevy / GMC C/K Truck & Blazer/Jimmy

- Panel finish:**  Matte Black  Carbon Fiber
- Gauge style: Electric**  AM C2  AM Carbon Fiber  AM Cobalt
- AM NV  AM Phantom  AM Phantom II
- AM Sport Comp  AM Sport Comp II  AM Ultra-Lite
- AM Ultra-Lite II  AM American Muscle  AM GT
- TR Silver  TR White  TR Black
- Mechanical**  AM Ultra-Lite  AM Phantom  AM Sport Comp

AM = Auto Meter TR = Thunder Road Concourse Series

### COMPLETE PACKAGE COMES WITH...

- 3-3/8" Speedometer  3-3/8" Tachometer  2-1/16" Fuel Level Gauge  
 2-1/16" Oil Pressure Gauge  2-1/16" Water Temp. Gauge  2-1/16" Volt Gauge

**Control options:** N/A

- Wiring options:**  Gauge wiring harness\*  
 Turning Signal, High Beam & Parking Brake Indicator (LED) Kit\*

\*Auto Meter electric gauge packages come with a wiring harness plus water temp and oil pressure sending units. However you must purchase a speedometer sending unit to match your transmission or a GPS receiver. Mechanical gauge packages do not come with a wiring harness. Concourse packages come with oil pressure and water temp sending units only—no wiring harness or LED lights (must be purchased separately).

### Applicable Accessories:

- GPS speedometer interface module
- Electric speedometer sending unit
- Speed sensor pigtail GM 700R/4
- Gauge wiring harness w/LED kit
- Speedometer adapter for mechanical gauges
- Power Plus 20 series wiring kit
- LS engine tach wire harness
- LS plug and play tach adapter and harness
- LS motor installation kit
- LED and terminal kit
- Tach adapter
- LED gauge light dimmer switch

# CLASSIC DASH APPLICATION GUIDE



Multiple gauge sizes are offered for this application.

## 1960-63 Chevrolet C/K Truck (excludes GMC Trucks)

- |                                     |   |   |  |
|-------------------------------------|---|---|--|
| <b>Panel finish:</b>                | <input type="checkbox"/> Matte Black      | <input type="checkbox"/> Brushed Aluminum   | <input type="checkbox"/> Carbon Fiber  |
| <b>Gauge style: <b>Electric</b></b> | <input type="checkbox"/> AM C2            | <input type="checkbox"/> AM Carbon Fiber    | <input type="checkbox"/> AM Cobalt     |
|                                     | <input type="checkbox"/> AM NV            | <input type="checkbox"/> AM Phantom         | <input type="checkbox"/> AM Phantom II |
|                                     | <input type="checkbox"/> AM Sport Comp    | <input type="checkbox"/> AM Sport Comp II   | <input type="checkbox"/> AM Ultra-Lite |
|                                     | <input type="checkbox"/> AM Ultra-Lite II | <input type="checkbox"/> AM American Muscle |  |
|                                     | <input type="checkbox"/> TR Silver        | <input type="checkbox"/> TR White           | <input type="checkbox"/> TR Black      |
| <b>Mechanical</b>                   | <input type="checkbox"/> AM Ultra-Lite    | <input type="checkbox"/> AM Phantom         | <input type="checkbox"/> AM Sport Comp |

AM = Auto Meter TR = Thunder Road Concourse Series

### COMPLETE PACKAGE COMES WITH...

- 3-3/8" Speedometer
  - 3-3/8" Tachometer
  - 2-1/16" Fuel Level Gauge
  - 2-1/16" Oil Pressure Gauge
  - 2-1/16" Water Temp. Gauge
  - 2-1/16" Volt Gauge
- Gauge size options:** 1960-63 Chevrolet truck 5-gauge dash panel (excludes GMC trucks)
- Control options:** N/A
- Wiring options:**
- Gauge wiring harness\*
  - Turning Signal, High Beam & Parking Brake Indicator (LED) Kit\*

\*Auto Meter electric gauge packages come with a wiring harness plus water temp and oil pressure sending units. However you must purchase a speedometer sending unit to match your transmission or a GPS receiver. Mechanical gauge packages do not come with a wiring harness. Concourse packages come with oil pressure and water temp sending units only—no wiring harness or LED lights (must be purchased separately).

### Applicable Accessories:

- GPS speedometer interface module
- Electric speedometer sending unit
- Speed sensor pigtail GM 700R/4
- Gauge wiring harness w/LED kit
- Speedometer adapter for mechanical gauges
- Classic Update series wiring kit
- LS engine tach wire harness
- LS plug and play tach adapter and harness
- LS motor installation kit
- LED and terminal kit
- Tach adapter
- LED gauge light dimmer switch

Chevrolet ONLY. This panel will NOT work for a 1960-63 GMC truck.  
Upgrade to a 0-90 ohm fuel sender may be required with certain gauges.

# CLASSIC DASH APPLICATION GUIDE



Multiple gauge sizes are offered for this application.

## 1964 Chevrolet C/K Truck (excludes GMC Trucks)

- |                                     |   |   |  |
|-------------------------------------|---|---|--|
| <b>Panel finish:</b>                | <input type="checkbox"/> Matte Black      | <input type="checkbox"/> Brushed Aluminum   | <input type="checkbox"/> Carbon Fiber  |
| <b>Gauge style: <b>Electric</b></b> | <input type="checkbox"/> AM C2            | <input type="checkbox"/> AM Carbon Fiber    | <input type="checkbox"/> AM Cobalt     |
|                                     | <input type="checkbox"/> AM NV            | <input type="checkbox"/> AM Phantom         | <input type="checkbox"/> AM Phantom II |
|                                     | <input type="checkbox"/> AM Sport Comp    | <input type="checkbox"/> AM Sport Comp II   | <input type="checkbox"/> AM Ultra-Lite |
|                                     | <input type="checkbox"/> AM Ultra-Lite II | <input type="checkbox"/> AM American Muscle |  |
|                                     | <input type="checkbox"/> TR Silver        | <input type="checkbox"/> TR White           | <input type="checkbox"/> TR Black      |
| <b>Mechanical</b>                   | <input type="checkbox"/> AM Ultra-Lite    | <input type="checkbox"/> AM Phantom         | <input type="checkbox"/> AM Sport Comp |

AM = Auto Meter TR = Thunder Road Concourse Series

### COMPLETE PACKAGE COMES WITH...

- 3-3/8" Speedometer
  - 3-3/8" Tachometer
  - 2-1/16" Fuel Level Gauge
  - 2-1/16" Oil Pressure Gauge
  - 2-1/16" Water Temp. Gauge
  - 2-1/16" Volt Gauge
- Gauge size options:** 1964 Chevrolet truck 5-gauge dash panel (excludes GMC trucks)
- Control options:** N/A
- Wiring options:**
- Gauge wiring harness\*
  - Turning Signal, High Beam & Parking Brake Indicator (LED) Kit\*

\*Auto Meter electric gauge packages come with a wiring harness plus water temp and oil pressure sending units. However you must purchase a speedometer sending unit to match your transmission or a GPS receiver. Mechanical gauge packages do not come with a wiring harness. Concourse packages come with oil pressure and water temp sending units only—no wiring harness or LED lights (must be purchased separately).

### Applicable Accessories:

- GPS speedometer interface module
- Electric speedometer sending unit
- Speed sensor pigtail GM 700R/4
- Gauge wiring harness w/LED kit
- Speedometer adapter for mechanical gauges
- Classic Update series wiring kit
- LS engine tach wire harness
- LS plug and play tach adapter and harness
- LS motor installation kit
- LED and terminal kit
- Tach adapter
- LED gauge light dimmer switch

Chevrolet ONLY. This panel will NOT work for a 1964-66 GMC truck.  
Upgrade to a 0-90 ohm fuel sender may be required with certain gauges.



# CLASSIC DASH APPLICATION GUIDE



Multiple gauge sizes are offered for this application.

## 1965-66 Chevrolet C/K Truck (excludes GMC Trucks)

- |                                     |   |   |  |
|-------------------------------------|---|---|--|
| <b>Panel finish:</b>                | <input type="checkbox"/> Matte Black      | <input type="checkbox"/> Brushed Aluminum   | <input type="checkbox"/> Carbon Fiber  |
| <b>Gauge style: <b>Electric</b></b> | <input type="checkbox"/> AM C2            | <input type="checkbox"/> AM Carbon Fiber    | <input type="checkbox"/> AM Cobalt     |
|                                     | <input type="checkbox"/> AM NV            | <input type="checkbox"/> AM Phantom         | <input type="checkbox"/> AM Phantom II |
|                                     | <input type="checkbox"/> AM Sport Comp    | <input type="checkbox"/> AM Sport Comp II   | <input type="checkbox"/> AM Ultra-Lite |
|                                     | <input type="checkbox"/> AM Ultra-Lite II | <input type="checkbox"/> AM American Muscle | <input type="checkbox"/> AM GT         |
|                                     | <input type="checkbox"/> TR Silver        | <input type="checkbox"/> TR White           | <input type="checkbox"/> TR Black      |
| <b>Mechanical</b>                   | <input type="checkbox"/> AM Ultra-Lite    | <input type="checkbox"/> AM Phantom         | <input type="checkbox"/> AM Sport Comp |

AM = Auto Meter TR = Thunder Road Concourse Series

### COMPLETE PACKAGE COMES WITH...

- 3-3/8" Speedometer
  - 3-3/8" Tachometer
  - 2-1/16" Fuel Level Gauge
  - 2-1/16" Oil Pressure Gauge
  - 2-1/16" Water Temp. Gauge
  - 2-1/16" Volt Gauge
- Gauge size options:** 1965-66 Chevrolet truck 5-gauge dash panel (excludes GMC trucks)
- Control options:** N/A
- Wiring options:**
- Gauge wiring harness\*
  - Turning Signal, High Beam & Parking Brake Indicator (LED) Kit\*

\*Auto Meter electric gauge packages come with a wiring harness plus water temp and oil pressure sending units. However you must purchase a speedometer sending unit to match your transmission or a GPS receiver. Mechanical gauge packages do not come with a wiring harness. Concourse packages come with oil pressure and water temp sending units only—no wiring harness or LED lights (must be purchased separately).

### Applicable Accessories:

- GPS speedometer interface module
- Electric speedometer sending unit
- Gauge wiring harness w/LED kit
- Mechanical speedometer cable adapter
- Classic Update series wiring kit
- LS motor installation kit
- LED and terminal kit
- LED gauge light dimmer switch

Chevrolet ONLY. This panel will NOT work for a 1965-66 GMC truck.

# CLASSIC DASH APPLICATION GUIDE



## 1967-72 Chevy / GMC C/K Truck

- Panel finish:**  Matte Black  Brushed Aluminum  Carbon Fiber
- Gauge style: Electric**  AM C2  AM Carbon Fiber  AM Cobalt
- AM NV  AM Phantom  AM Phantom II
- AM Sport Comp  AM Sport Comp II  AM Ultra-Lite
- AM Ultra-Lite II  AM American Muscle  AM GT
- TR Silver  TR White  TR Black
- Mechanical**  AM Ultra-Lite  AM Phantom  AM Sport Comp

AM = Auto Meter TR = Thunder Road Concourse Series

### COMPLETE PACKAGE COMES WITH...

- 3-3/8" Speedometer  3-3/8" Tachometer  2-1/16" Fuel Level Gauge  
 2-1/16" Oil Pressure Gauge  2-1/16" Water Temp. Gauge  2-1/16" Volt Gauge

**Control options:** N/A

- Wiring options:**  Gauge wiring harness\*  
 Turning Signal, High Beam & Parking Brake Indicator (LED) Kit\*

\*Auto Meter electric gauge packages come with a wiring harness plus water temp and oil pressure sending units. However you must purchase a speedometer sending unit to match your transmission or a GPS receiver. Mechanical gauge packages do not come with a wiring harness. Concourse packages come with oil pressure and water temp sending units only—no wiring harness or LED lights (must be purchased separately).

### Applicable Accessories:

- GPS speedometer interface module
- Electric speedometer sending unit
- Speed sensor pigtail GM 700R/4
- Gauge wiring harness w/LED kit
- Black finish glove box cover
- Brushed aluminum finish glove box cover
- Carbon fiber finish glove box cover
- Speedometer adapter for mechanical gauges
- Classic Update series wiring kit
- Power Plus 20 series wiring kit
- LS engine tach wire harness
- LS plug and play tach adapter and harness
- LS motor installation kit
- LED and terminal kit
- Tach adapter
- LED gauge light dimmer switch

# CLASSIC DASH APPLICATION GUIDE



Multiple gauge sizes are offered for this application.

## 1967-68 Camaro / Firebird

- |                              |   |   |  |
|------------------------------|---|---|--|
| <b>Panel finish:</b>         | <input type="checkbox"/> Matte Black      | <input type="checkbox"/> Brushed Aluminum   | <input type="checkbox"/> Carbon Fiber  |
| <b>Gauge style: Electric</b> | <input type="checkbox"/> AM C2            | <input type="checkbox"/> AM Carbon Fiber    | <input type="checkbox"/> AM Cobalt     |
|                              | <input type="checkbox"/> AM NV            | <input type="checkbox"/> AM Phantom         | <input type="checkbox"/> AM Phantom II |
|                              | <input type="checkbox"/> AM Sport Comp    | <input type="checkbox"/> AM Sport Comp II   | <input type="checkbox"/> AM Ultra-Lite |
|                              | <input type="checkbox"/> AM Ultra-Lite II | <input type="checkbox"/> AM American Muscle | <input type="checkbox"/> AM GT         |
|                              | <input type="checkbox"/> TR Silver        | <input type="checkbox"/> TR White           | <input type="checkbox"/> TR Black      |
| <b>Mechanical</b>            | <input type="checkbox"/> AM Ultra-Lite    | <input type="checkbox"/> AM Phantom         | <input type="checkbox"/> AM Sport Comp |

AM = Auto Meter TR = Thunder Road Concourse Series

### COMPLETE PACKAGE COMES WITH...

- 3-3/8" Speedometer
  - 3-3/8" Tachometer
  - 2-1/16" Fuel Level Gauge
  - 2-1/16" Oil Pressure Gauge
  - 2-1/16" Water Temp. Gauge
  - 2-1/16" Volt Gauge
- Gauge size options:** 2-gauge dash panel with 3-3/8" or 5" gauges  
Center dash gauge panel with 2-5/8" or 2-1/16" gauges  
'68-'69 Camaro center console quad pod with gauges
- Control options:** N/A
- Wiring options:**  Gauge wiring harness\*  
 Turning Signal, High Beam & Parking Brake Indicator (LED) Kit\*

\*Auto Meter electric gauge packages come with a wiring harness plus water temp and oil pressure sending units. However you must purchase a speedometer sending unit to match your transmission or a GPS receiver. Mechanical gauge packages do not come with a wiring harness. Concourse packages come with oil pressure and water temp sending units only—no wiring harness or LED lights (must be purchased separately).

### Applicable Accessories:

- GPS speedometer interface module
- Electric speedometer sending unit
- Black steering column undercover
- Brushed aluminum steering column cover
- Carbon fiber steering column cover
- Brushed aluminum door sill plates
- Carbon fiber door sill plates
- Speedometer adapter for mechanical gauges
- Gauge wiring harness w/LED kit
- Power Plus 20 series wiring kit
- LS engine tach wire harness
- LS plug and play tach adapter and harness
- LS motor installation kit
- LED and terminal kit
- Tach adapter
- LED gauge light dimmer switch

# CLASSIC DASH APPLICATION GUIDE



Multiple gauge sizes are offered for this application.

## 1969 Camaro

- |                                     |   |   |  |
|-------------------------------------|---|---|--|
| <b>Panel finish:</b>                | <input type="checkbox"/> Matte Black      | <input type="checkbox"/> Brushed Aluminum   | <input type="checkbox"/> Carbon Fiber  |
| <b>Gauge style: <b>Electric</b></b> | <input type="checkbox"/> AM C2            | <input type="checkbox"/> AM Carbon Fiber    | <input type="checkbox"/> AM Cobalt     |
|                                     | <input type="checkbox"/> AM NV            | <input type="checkbox"/> AM Phantom         | <input type="checkbox"/> AM Phantom II |
|                                     | <input type="checkbox"/> AM Sport Comp    | <input type="checkbox"/> AM Sport Comp II   | <input type="checkbox"/> AM Ultra-Lite |
|                                     | <input type="checkbox"/> AM Ultra-Lite II | <input type="checkbox"/> AM American Muscle | <input type="checkbox"/> AM GT         |
| <b>Mechanical</b>                   | <input type="checkbox"/> AM Ultra-Lite    | <input type="checkbox"/> AM Phantom         | <input type="checkbox"/> AM Sport Comp |

AM = Auto Meter

### COMPLETE PACKAGE COMES WITH...

- 5" Speedometer     5" Tachometer     2-1/16" Fuel Level Gauge
- 2-1/16" Oil Pressure Gauge     2-1/16" Water Temp. Gauge     2-1/16" Volt Gauge
- Gauge size options:** 6-gauge dash panel with 3-3/8"
- Control options:** N/A
- Vent options:** Available with or without vents
- Wiring options:**  Gauge wiring harness\*  
 Turning Signal, High Beam & Parking Brake Indicator (LED) Kit\*

\*Auto Meter electric gauge packages come with a wiring harness plus water temp and oil pressure sending units. However you must purchase a speedometer sending unit to match your transmission or a GPS receiver. Mechanical gauge packages do not come with a wiring harness.

### Applicable Accessories:

- GPS speedometer interface module
- Electric speedometer sending unit
- Carbon fiber door sill plates
- Brushed aluminum door sill plates
- Matte black steering undercover
- Brushed aluminum steering undercover
- Carbon fiber steering undercover
- Gauge wiring harness w/LED kit
- Speedometer adapter for mechanical gauges
- Power Plus 20 series wiring kit
- LS engine tach wire harness
- LS plug and play tach adapter and harness
- LS motor installation kit
- LED and terminal kit
- Tach adapter
- LED gauge light dimmer switch

Steering column undercover **INCLUDED** with purchase of dash.

# CLASSIC DASH APPLICATION GUIDE



## 1970-78 Camaro

- Panel finish:**  Matte Black  Brushed Aluminum  Carbon Fiber
- Gauge style: Electric**  AM C2  AM Carbon Fiber  AM Cobalt
- AM NV  AM Phantom  AM Phantom II
- AM Sport Comp  AM Sport Comp II  AM Ultra-Lite
- AM Ultra-Lite II  AM American Muscle  AM GT
- TR Silver  TR White  TR Black
- Mechanical**  AM Ultra-Lite  AM Phantom  AM Sport Comp

AM = Auto Meter TR = Thunder Road Concourse Series

### COMPLETE PACKAGE COMES WITH...

- 3-3/8" Speedometer  3-3/8" Tachometer  2-1/16" Fuel Level Gauge  
 2-1/16" Oil Pressure Gauge  2-1/16" Water Temp. Gauge  2-1/16" Volt Gauge

**Control options:** N/A

- Wiring options:**  Gauge wiring harness\*  
 Turning Signal, High Beam & Parking Brake Indicator (LED) Kit\*

\*Auto Meter electric gauge packages come with a wiring harness plus water temp and oil pressure sending units. However you must purchase a speedometer sending unit to match your transmission or a GPS receiver. Mechanical gauge packages do not come with a wiring harness. Concourse packages come with oil pressure and water temp sending units only—no wiring harness or LED lights (must be purchased separately).

### Applicable Accessories:

- GPS speedometer interface module
- Electric speedometer sending unit
- Gauge wiring harness w/LED kit
- Speedometer adapter for mechanical gauges
- Classic Update series wiring kit
- Power Plus 20 series wiring kit
- LS engine tach wire harness
- LS plug and play tach adapter and harness
- LS motor installation kit
- LED and terminal kit
- Tach adapter
- LED gauge light dimmer switch

# CLASSIC DASH APPLICATION GUIDE



## 1979-81 Camaro

- Panel finish:**  Matte Black  Brushed Aluminum  Carbon Fiber
- Gauge style: Electric**  AM C2  AM Carbon Fiber  AM Cobalt
- AM NV  AM Phantom  AM Phantom II
- AM Sport Comp  AM Sport Comp II  AM Ultra-Lite
- AM Ultra-Lite II  AM American Muscle  AM GT
- TR Silver  TR White  TR Black
- Mechanical**  AM Ultra-Lite  AM Phantom  AM Sport Comp

AM = Auto Meter TR = Thunder Road Concourse Series

### COMPLETE PACKAGE COMES WITH...

- 3-3/8" Speedometer  3-3/8" Tachometer  2-1/16" Fuel Level Gauge  
 2-1/16" Oil Pressure Gauge  2-1/16" Water Temp. Gauge  2-1/16" Volt Gauge

**Control options:** N/A

- Wiring options:**  Gauge wiring harness\*  
 Turning Signal, High Beam & Parking Brake Indicator (LED) Kit\*

\*Auto Meter electric gauge packages come with a wiring harness plus water temp and oil pressure sending units. However you must purchase a speedometer sending unit to match your transmission or a GPS receiver. Mechanical gauge packages do not come with a wiring harness. Concourse packages come with oil pressure and water temp sending units only—no wiring harness or LED lights (must be purchased separately).

### Applicable Accessories:

- GPS speedometer interface module
- Electric speedometer sending unit
- Speed sensor pigtail GM 4LE60/4LE80
- Gauge wiring harness w/LED kit
- Speedometer adapter for mechanical gauges
- Power Plus 20 series wiring kit
- LS engine tach wire harness
- LS plug and play tach adapter and harness
- LS motor installation kit
- LED and terminal kit
- Tach adapter
- LED gauge light dimmer switch

# CLASSIC DASH APPLICATION GUIDE



## 1982-89 Camaro

- |                                     |   |   |  |
|-------------------------------------|---|---|--|
| <b>Panel finish:</b>                | <input type="checkbox"/> Matte Black      | <input type="checkbox"/> Brushed Aluminum   | <input type="checkbox"/> Carbon Fiber  |
| <b>Gauge style: <b>Electric</b></b> | <input type="checkbox"/> AM C2            | <input type="checkbox"/> AM Carbon Fiber    | <input type="checkbox"/> AM Cobalt     |
|                                     | <input type="checkbox"/> AM NV            | <input type="checkbox"/> AM Phantom         | <input type="checkbox"/> AM Phantom II |
|                                     | <input type="checkbox"/> AM Sport Comp    | <input type="checkbox"/> AM Sport Comp II   | <input type="checkbox"/> AM Ultra-Lite |
|                                     | <input type="checkbox"/> AM Ultra-Lite II | <input type="checkbox"/> AM American Muscle | <input type="checkbox"/> AM GT         |
|                                     | <input type="checkbox"/> TR Silver        | <input type="checkbox"/> TR White           | <input type="checkbox"/> TR Black      |
| <b>Mechanical</b>                   | <input type="checkbox"/> AM Ultra-Lite    | <input type="checkbox"/> AM Phantom         | <input type="checkbox"/> AM Sport Comp |

AM = Auto Meter TR = Thunder Road Concourse Series

### COMPLETE PACKAGE COMES WITH...

- 3-3/8" Speedometer
- 3-3/8" Tachometer
- 2-1/16" Fuel Level Gauge
- 2-1/16" Oil Pressure Gauge
- 2-1/16" Water Temp. Gauge
- 2-1/16" Volt Gauge

**Control options:** N/A

- Wiring options:**
- Gauge wiring harness\*
  - Turning Signal, High Beam & Parking Brake Indicator (LED) Kit\*

\*Auto Meter electric gauge packages come with a wiring harness plus water temp and oil pressure sending units. However you must purchase a speedometer sending unit to match your transmission or a GPS receiver. Mechanical gauge packages do not come with a wiring harness. Concourse packages come with oil pressure and water temp sending units only—no wiring harness or LED lights (must be purchased separately).

### Applicable Accessories:

- GPS speedometer interface module
- Electric speedometer sending unit
- Speed sensor pigtail GM 4LE60/4LE80
- Gauge wiring harness w/LED kit
- Speedometer adapter for mechanical gauges
- Power Plus 20 series wiring kit
- LS engine tach wire harness
- LS plug and play tach adapter and harness
- LS motor installation kit
- LED and terminal kit
- Tach adapter
- LED gauge light dimmer switch

# CLASSIC DASH APPLICATION GUIDE



## 1990-92 Camaro

- |                                     |   |   |  |
|-------------------------------------|---|---|--|
| <b>Panel finish:</b>                | <input type="checkbox"/> Matte Black      | <input type="checkbox"/> Brushed Aluminum   | <input type="checkbox"/> Carbon Fiber  |
| <b>Gauge style: <b>Electric</b></b> | <input type="checkbox"/> AM C2            | <input type="checkbox"/> AM Carbon Fiber    | <input type="checkbox"/> AM Cobalt     |
|                                     | <input type="checkbox"/> AM NV            | <input type="checkbox"/> AM Phantom         | <input type="checkbox"/> AM Phantom II |
|                                     | <input type="checkbox"/> AM Sport Comp    | <input type="checkbox"/> AM Sport Comp II   | <input type="checkbox"/> AM Ultra-Lite |
|                                     | <input type="checkbox"/> AM Ultra-Lite II | <input type="checkbox"/> AM American Muscle | <input type="checkbox"/> AM GT         |
| <b>Mechanical</b>                   | <input type="checkbox"/> AM Ultra-Lite    | <input type="checkbox"/> AM Phantom         | <input type="checkbox"/> AM Sport Comp |

AM = Auto Meter

### COMPLETE PACKAGE COMES WITH...

- 5" Speedometer
  - 5" Tachometer
  - 2-1/16" Fuel Level Gauge
  - 2-1/16" Oil Pressure Gauge
  - 2-1/16" Water Temp. Gauge
  - 2-1/16" Volt Gauge
- Control options:** N/A
- Wiring options:**  Gauge wiring harness\*  
 Turning Signal, High Beam & Parking Brake Indicator (LED) Kit\*

\*Auto Meter electric gauge packages come with a wiring harness plus water temp and oil pressure sending units. However you must purchase a speedometer sending unit to match your transmission or a GPS receiver. Mechanical gauge packages do not come with a wiring harness.

### Applicable Accessories:

- GPS speedometer interface module
- Electric speedometer sending unit
- Speed sensor pigtail GM 4LE60/4LE80
- Gauge wiring harness w/LED kit
- Speedometer adapter for mechanical gauges
- Power Plus 20 series wiring kit
- LS engine tach wire harness
- LS plug and play tach adapter and harness
- LS motor installation kit
- LED and terminal kit
- Tach adapter
- LED gauge light dimmer switch



# CLASSIC DASH APPLICATION GUIDE



Multiple gauge sizes are offered for this application.

## 1964 Chevelle / El Camino / Malibu

- |                                     |   |   |  |
|-------------------------------------|---|---|--|
| <b>Panel finish:</b>                | <input type="checkbox"/> Matte Black      | <input type="checkbox"/> Brushed Aluminum   | <input type="checkbox"/> Carbon Fiber  |
| <b>Gauge style: <b>Electric</b></b> | <input type="checkbox"/> AM C2            | <input type="checkbox"/> AM Carbon Fiber    | <input type="checkbox"/> AM Cobalt     |
|                                     | <input type="checkbox"/> AM NV            | <input type="checkbox"/> AM Phantom         | <input type="checkbox"/> AM Phantom II |
|                                     | <input type="checkbox"/> AM Sport Comp    | <input type="checkbox"/> AM Sport Comp II   | <input type="checkbox"/> AM Ultra-Lite |
|                                     | <input type="checkbox"/> AM Ultra-Lite II | <input type="checkbox"/> AM American Muscle | <input type="checkbox"/> AM GT         |
| <b>Mechanical</b>                   | <input type="checkbox"/> AM Ultra-Lite    | <input type="checkbox"/> AM Phantom         | <input type="checkbox"/> AM Sport Comp |

AM = Auto Meter

### COMPLETE PACKAGE COMES WITH...

- 5" Speedometer     5" Tachometer     2-1/16" Fuel Level Gauge
- (0-30 ohm gauge available in Sport Comp, Ultra-Lite and Phantom gauges ONLY)
- 2-1/16" Oil Pressure Gauge     2-1/16" Water Temp. Gauge     2-1/16" Volt Gauge
- Gauge size options:** 6-gauge dash panel with 3-3/8" gauges
- Control options:** N/A
- Wiring options:**  Gauge wiring harness\*  
 Turning Signal, High Beam & Parking Brake Indicator (LED) Kit\*

\*Auto Meter electric gauge packages come with a wiring harness plus water temp and oil pressure sending units. However you must purchase a speedometer sending unit to match your transmission or a GPS receiver. Mechanical gauge packages do not come with a wiring harness.

### Applicable Accessories:

- GPS speedometer interface module
- Electric speedometer sending unit
- Gauge wiring harness w/LED kit
- Speedometer adapter for mechanical gauges
- Classic Update series wiring kit
- LS motor installation kit
- LED and terminal kit
- LED gauge light dimmer switch

Upgrade to a 0-90 ohm fuel sender may be required with certain gauges.

# CLASSIC DASH APPLICATION GUIDE



Multiple gauge sizes are offered for this application.

## 1965 Chevelle / El Camino / Malibu

- |                                     |   |   |  |
|-------------------------------------|---|---|--|
| <b>Panel finish:</b>                | <input type="checkbox"/> Matte Black      | <input type="checkbox"/> Brushed Aluminum   | <input type="checkbox"/> Carbon Fiber  |
| <b>Gauge style: <b>Electric</b></b> | <input type="checkbox"/> AM C2            | <input type="checkbox"/> AM Carbon Fiber    | <input type="checkbox"/> AM Cobalt     |
|                                     | <input type="checkbox"/> AM NV            | <input type="checkbox"/> AM Phantom         | <input type="checkbox"/> AM Phantom II |
|                                     | <input type="checkbox"/> AM Sport Comp    | <input type="checkbox"/> AM Sport Comp II   | <input type="checkbox"/> AM Ultra-Lite |
|                                     | <input type="checkbox"/> AM Ultra-Lite II | <input type="checkbox"/> AM American Muscle | <input type="checkbox"/> AM GT         |
|                                     | <input type="checkbox"/> TR Silver        | <input type="checkbox"/> TR White           | <input type="checkbox"/> TR Black      |
| <b>Mechanical</b>                   | <input type="checkbox"/> AM Ultra-Lite    | <input type="checkbox"/> AM Phantom         | <input type="checkbox"/> AM Sport Comp |

AM = Auto Meter TR = Thunder Road Concourse Series

### COMPLETE PACKAGE COMES WITH...

- 3-3/8" Speedometer
  - 3-3/8" Tachometer
  - 2-1/16" Fuel Level Gauge
  - 2-1/16" Oil Pressure Gauge
  - 2-1/16" Water Temp. Gauge
  - 2-1/16" Volt Gauge
- Gauge size options:** 1965 Chevelle/El Camino/Malibu complete 5" dash panel
- Control options:** N/A
- Wiring options:**
- Gauge wiring harness\*
  - Turning Signal, High Beam & Parking Brake Indicator (LED) Kit\*

\*Auto Meter electric gauge packages come with a wiring harness plus water temp and oil pressure sending units. However you must purchase a speedometer sending unit to match your transmission or a GPS receiver. Mechanical gauge packages do not come with a wiring harness. Concourse packages come with oil pressure and water temp sending units only—no wiring harness or LED lights (must be purchased separately).

### Applicable Accessories:

- GPS speedometer interface module
- Electric speedometer sending unit
- Speed sensor pigtail GM 700R/4
- Gauge wiring harness w/LED kit
- Speedometer adapter for mechanical gauges
- Classic Update series wiring kit
- LS engine tach wire harness
- LS plug and play tach adapter and harness
- LS motor installation kit
- LED and terminal kit
- Tach adapter
- LED gauge light dimmer switch

# CLASSIC DASH APPLICATION GUIDE



## 1966 Chevelle / El Camino / Malibu

- Panel finish:**  Matte Black  Brushed Aluminum  Carbon Fiber
- Gauge style: Electric**  AM C2  AM Carbon Fiber  AM Cobalt
- AM NV  AM Phantom  AM Phantom II
- AM Sport Comp  AM Sport Comp II  AM Ultra-Lite
- AM Ultra-Lite II  AM American Muscle  AM GT
- TR Silver  TR White  TR Black
- Mechanical**  AM Ultra-Lite  AM Phantom  AM Sport Comp

AM = Auto Meter TR = Thunder Road Concourse Series

### COMPLETE PACKAGE COMES WITH...

- 3-3/8" Speedometer  3-3/8" Tachometer  2-1/16" Fuel Level Gauge  
 2-1/16" Oil Pressure Gauge  2-1/16" Water Temp. Gauge  2-1/16" Volt Gauge

**Control options:** N/A

- Wiring options:**  Gauge wiring harness\*  
 Turning Signal, High Beam & Parking Brake Indicator (LED) Kit\*

\*Auto Meter electric gauge packages come with a wiring harness plus water temp and oil pressure sending units. However you must purchase a speedometer sending unit to match your transmission or a GPS receiver. Mechanical gauge packages do not come with a wiring harness. Concourse packages come with oil pressure and water temp sending units only—no wiring harness or LED lights (must be purchased separately).

### Applicable Accessories:

- GPS speedometer interface module
- Electric speedometer sending unit
- Speed sensor pigtail GM 4LE60/4LE80
- Gauge wiring harness w/LED kit
- Speedometer adapter for mechanical gauges
- Classic Update series wiring kit
- LS engine tach wire harness
- LS plug and play tach adapter and harness
- LS motor installation kit
- LED and terminal kit
- Tach adapter
- LED gauge light dimmer switch

# CLASSIC DASH APPLICATION GUIDE



## 1967 Chevelle / El Camino / Malibu

- Panel finish:**  Matte Black  Brushed Aluminum  Carbon Fiber
- Gauge style: Electric**  AM C2  AM Carbon Fiber  AM Cobalt
- AM NV  AM Phantom  AM Phantom II
- AM Sport Comp  AM Sport Comp II  AM Ultra-Lite
- AM Ultra-Lite II  AM American Muscle  AM GT
- TR Silver  TR White  TR Black
- Mechanical**  AM Ultra-Lite  AM Phantom  AM Sport Comp

AM = Auto Meter TR = Thunder Road Concourse Series

### COMPLETE PACKAGE COMES WITH...

- 3-3/8" Speedometer  3-3/8" Tachometer  2-1/16" Fuel Level Gauge  
 2-1/16" Oil Pressure Gauge  2-1/16" Water Temp. Gauge  2-1/16" Volt Gauge

**Control options:** N/A

- Wiring options:**  Gauge wiring harness\*  
 Turning Signal, High Beam & Parking Brake Indicator (LED) Kit\*

\*Auto Meter electric gauge packages come with a wiring harness plus water temp and oil pressure sending units. However you must purchase a speedometer sending unit to match your transmission or a GPS receiver. Mechanical gauge packages do not come with a wiring harness. Concourse packages come with oil pressure and water temp sending units only—no wiring harness or LED lights (must be purchased separately).

### Applicable Accessories:

- GPS speedometer interface module
- Electric speedometer sending unit
- Speed sensor pigtail GM 4LE60/4LE80
- Gauge wiring harness w/LED kit
- Speedometer adapter for mechanical gauges
- Classic Update series wiring kit
- LS engine tach wire harness
- LS plug and play tach adapter and harness
- LS motor installation kit
- LED and terminal kit
- Tach adapter
- LED gauge light dimmer switch

# CLASSIC DASH APPLICATION GUIDE



Multiple gauge sizes are offered for this application.

## 1968 Chevelle / El Camino / Malibu

- |                                     |   |   |  |
|-------------------------------------|---|---|--|
| <b>Panel finish:</b>                | <input type="checkbox"/> Matte Black      | <input type="checkbox"/> Brushed Aluminum   | <input type="checkbox"/> Carbon Fiber  |
| <b>Gauge style: <b>Electric</b></b> | <input type="checkbox"/> AM C2            | <input type="checkbox"/> AM Carbon Fiber    | <input type="checkbox"/> AM Cobalt     |
|                                     | <input type="checkbox"/> AM NV            | <input type="checkbox"/> AM Phantom         | <input type="checkbox"/> AM Phantom II |
|                                     | <input type="checkbox"/> AM Sport Comp    | <input type="checkbox"/> AM Sport Comp II   | <input type="checkbox"/> AM Ultra-Lite |
|                                     | <input type="checkbox"/> AM Ultra-Lite II | <input type="checkbox"/> AM American Muscle | <input type="checkbox"/> AM GT         |
|                                     | <input type="checkbox"/> TR Silver        | <input type="checkbox"/> TR White           | <input type="checkbox"/> TR Black      |
| <b>Mechanical</b>                   | <input type="checkbox"/> AM Ultra-Lite    | <input type="checkbox"/> AM Phantom         | <input type="checkbox"/> AM Sport Comp |

AM = Auto Meter TR = Thunder Road Concourse Series

### COMPLETE PACKAGE COMES WITH...

- 3-3/8" Speedometer
  - 3-3/8" Tachometer
  - 2-1/16" Fuel Level Gauge
  - 2-1/16" Oil Pressure Gauge
  - 2-1/16" Water Temp. Gauge
  - 2-1/16" Volt Gauge
- Gauge size options:** 6-gauge panel with 5" gauges
- Control options:** N/A
- Vent options:** Available with or without Astro vents
- Wiring options:**
- Gauge wiring harness\*
  - Turning Signal, High Beam & Parking Brake Indicator (LED) Kit\*

\*Auto Meter electric gauge packages come with a wiring harness plus water temp and oil pressure sending units. However you must purchase a speedometer sending unit to match your transmission or a GPS receiver. Mechanical gauge packages do not come with a wiring harness. Concourse packages come with oil pressure and water temp sending units only—no wiring harness or LED lights (must be purchased separately).

### Applicable Accessories:

- GPS speedometer interface module
- Electric speedometer sending unit
- Speed sensor pigtail GM 4LE60/4LE80
- Speed sensor pigtail GM 700R/4
- Matte black steering undercover
- Brushed aluminum steering undercover
- Carbon fiber steering undercover
- Gauge wiring harness w/LED kit
- Speedometer adapter for mechanical gauges
- Classic Update series wiring kit
- LS engine tach wire harness
- LS plug and play tach adapter and harness
- LS motor installation kit
- LED and terminal kit
- Tach adapter
- LED gauge light dimmer switch

Steering column undercover **INCLUDED** with purchase of dash.

# CLASSIC DASH APPLICATION GUIDE



Multiple gauge sizes are offered for this application.

## 1969 Chevelle / El Camino / Malibu

- |                                     |   |   |  |
|-------------------------------------|---|---|--|
| <b>Panel finish:</b>                | <input type="checkbox"/> Matte Black      | <input type="checkbox"/> Brushed Aluminum   | <input type="checkbox"/> Carbon Fiber  |
| <b>Gauge style: <b>Electric</b></b> | <input type="checkbox"/> AM C2            | <input type="checkbox"/> AM Carbon Fiber    | <input type="checkbox"/> AM Cobalt     |
|                                     | <input type="checkbox"/> AM NV            | <input type="checkbox"/> AM Phantom         | <input type="checkbox"/> AM Phantom II |
|                                     | <input type="checkbox"/> AM Sport Comp    | <input type="checkbox"/> AM Sport Comp II   | <input type="checkbox"/> AM Ultra-Lite |
|                                     | <input type="checkbox"/> AM Ultra-Lite II | <input type="checkbox"/> AM American Muscle | <input type="checkbox"/> AM GT         |
| <b>Mechanical</b>                   | <input type="checkbox"/> AM Ultra-Lite    | <input type="checkbox"/> AM Phantom         | <input type="checkbox"/> AM Sport Comp |

AM = Auto Meter

### COMPLETE PACKAGE COMES WITH...

- 3-3/8" Speedometer
  - 3-3/8" Tachometer
  - 2-1/16" Fuel Level Gauge
  - 2-1/16" Oil Pressure Gauge
  - 2-1/16" Water Temp. Gauge
  - 2-1/16" Volt Gauge
- Gauge size options:** 6-gauge panel with 3-3/8" gauges
- Control options:** N/A
- Vent options:** Available with or without Astro vents
- Wiring options:**  Gauge wiring harness\*  
 Turning Signal, High Beam & Parking Brake Indicator (LED) Kit\*

\*Auto Meter electric gauge packages come with a wiring harness plus water temp and oil pressure sending units. However you must purchase a speedometer sending unit to match your transmission or a GPS receiver. Mechanical gauge packages do not come with a wiring harness.

### Applicable Accessories:

- GPS speedometer interface module
- Electric speedometer sending unit
- Speed sensor pigtail GM 4LE60/4LE80
- Speed sensor pigtail GM 700R/4
- Matte black steering undercover
- Brushed aluminum steering undercover
- Carbon fiber steering undercover
- Gauge wiring harness w/LED kit
- Speedometer adapter for mechanical gauges
- Classic Update series wiring kit
- LS engine tach wire harness
- LS plug and play tach adapter and harness
- LS motor installation kit
- LED and terminal kit
- Tach adapter
- LED gauge light dimmer switch

Steering column undercover **INCLUDED** with purchase of dash.

# CLASSIC DASH APPLICATION GUIDE



SS Version **SS dash fits only SS models**



Malibu Sweep Version

Multiple gauge sizes are offered for this application.

## 1970-72 Chevelle / El Camino / Malibu / Monte Carlo SS

- |                                     |   |   |  |
|-------------------------------------|---|---|--|
| <b>Panel finish:</b>                | <input type="checkbox"/> Matte Black      | <input type="checkbox"/> Brushed Aluminum   | <input type="checkbox"/> Carbon Fiber  |
| <b>Gauge style: <b>Electric</b></b> | <input type="checkbox"/> AM C2            | <input type="checkbox"/> AM Carbon Fiber    | <input type="checkbox"/> AM Cobalt     |
|                                     | <input type="checkbox"/> AM NV            | <input type="checkbox"/> AM Phantom         | <input type="checkbox"/> AM Phantom II |
|                                     | <input type="checkbox"/> AM Sport Comp    | <input type="checkbox"/> AM Sport Comp II   | <input type="checkbox"/> AM Ultra-Lite |
|                                     | <input type="checkbox"/> AM Ultra-Lite II | <input type="checkbox"/> AM American Muscle | <input type="checkbox"/> AM GT         |
|                                     | <input type="checkbox"/> TR Silver        | <input type="checkbox"/> TR White           | <input type="checkbox"/> TR Black      |
| <b>Mechanical</b>                   | <input type="checkbox"/> AM Ultra-Lite    | <input type="checkbox"/> AM Phantom         | <input type="checkbox"/> AM Sport Comp |

AM = Auto Meter TR = Thunder Road Concourse Series

### COMPLETE PACKAGE COMES WITH...

- 3-3/8" Speedometer
  - 3-3/8" Tachometer
  - 2-1/16" Fuel Level Gauge
  - 2-1/16" Oil Pressure Gauge
  - 2-1/16" Water Temp. Gauge
  - 2-1/16" Volt Gauge
- Gauge size options:** Non-SS 6-gauge panel with gauges
- Control options:** N/A
- Wiring options:**
- Gauge wiring harness\*
  - Turning Signal, High Beam & Parking Brake Indicator (LED) Kit\*

\*Auto Meter electric gauge packages come with a wiring harness plus water temp and oil pressure sending units. However you must purchase a speedometer sending unit to match your transmission or a GPS receiver. Mechanical gauge packages do not come with a wiring harness. Concourse packages come with oil pressure and water temp sending units only—no wiring harness or LED lights (must be purchased separately).

### Applicable Accessories:

- GPS speedometer interface module
- Electric speedometer sending unit
- Speed sensor pigtail GM 4LE60/4LE80
- Gauge wiring harness w/LED kit
- Speedometer adapter for mechanical gauges
- Classic Update series wiring kit
- LS engine tach wire harness
- LS plug and play tach adapter and harness
- LS motor installation kit
- LED and terminal kit
- Tach adapter
- LED light dimmer switch

*This panel is an overlay. Modification may be required for headlamp switch.*

# CLASSIC DASH APPLICATION GUIDE



## 1963-67 Corvette

- Panel finish:**  Matte Black  Brushed Aluminum  Carbon Fiber
- Gauge style: Electric**  AM C2  AM Carbon Fiber  AM Cobalt
- AM NV  AM Phantom  AM Phantom II
- AM Sport Comp  AM Sport Comp II  AM Ultra-Lite
- AM Ultra-Lite II  AM American Muscle  AM GT
- Mechanical**  AM Ultra-Lite  AM Phantom  AM Sport Comp

AM = Auto Meter

### COMPLETE PACKAGE COMES WITH...

- 5" Speedometer  5" Tachometer  2-1/16" Fuel Level Gauge  
 2-1/16" Oil Pressure Gauge  2-1/16" Water Temp. Gauge  2-1/16" Volt Gauge
- Control options:** N/A
- Wiring options:**  Gauge wiring harness\*  
 Turning Signal, High Beam & Parking Brake Indicator (LED) Kit\*

\*Auto Meter electric gauge packages come with a wiring harness plus water temp and oil pressure sending units. However you must purchase a speedometer sending unit to match your transmission or a GPS receiver. Mechanical gauge packages do not come with a wiring harness.

### Applicable Accessories:

- GPS speedometer interface module
- Electric speedometer sending unit
- Speed sensor pigtail GM 4LE60/4LE80
- Gauge wiring harness w/LED kit
- Speedometer adapter for mechanical gauges
- Power Plus 20 series wiring kit
- LS engine tach wire harness
- LS plug and play tach adapter and harness
- LS motor installation kit
- LED and terminal kit
- Tach adapter
- LED gauge light dimmer switch



# CLASSIC DASH APPLICATION GUIDE



## 1978-81 Malibu / Monte Carlo / El Camino

- Panel finish:**  Matte Black  Brushed Aluminum  Carbon Fiber
- Gauge style: Electric**  AM Carbon Fiber  AM Cobalt  AM Phantom
- AM Phantom II  AM Sport Comp  AM Sport Comp II
- AM Ultra-Lite  AM Ultra-Lite II
- Mechanical**  AM Ultra-Lite  AM Phantom  AM Sport Comp

AM = Auto Meter

### COMPLETE PACKAGE COMES WITH...

- 5" Speedometer  5" Tachometer  2-5/8" Fuel Level Gauge  
 2-5/8" Oil Pressure Gauge  2-5/8" Water Temp. Gauge  2-5/8" Volt Gauge
- Control options:** N/A
- Wiring options:**  Gauge wiring harness\*  
 Turning Signal, High Beam & Parking Brake Indicator (LED) Kit\*

\*Auto Meter electric gauge packages come with a wiring harness plus water temp and oil pressure sending units. However you must purchase a speedometer sending unit to match your transmission or a GPS receiver.  
Mechanical gauge packages do not come with a wiring harness.

### Applicable Accessories:

- GPS speedometer interface module
- Electric speedometer sending unit
- Speed sensor pigtail GM 700R/4
- Wiring harness w/LED
- Speedometer adapter for mechanical gauges
- Power Plus 20 series wiring kit
- LS engine tach wire harness
- LS plug and play tach adapter and harness
- LS motor installation kit
- LED and terminal kit
- Tach adapter
- LED gauge light dimmer switch

# CLASSIC DASH APPLICATION GUIDE



## 1982-87 Malibu / Monte Carlo / El Camino

- |                                     |  |   |   |
|-------------------------------------|--|---|---|
| <b>Panel finish:</b>                | <input type="checkbox"/> Matte Black     | <input type="checkbox"/> Brushed Aluminum | <input type="checkbox"/> Carbon Fiber     |
| <b>Gauge style: <b>Electric</b></b> | <input type="checkbox"/> AM Carbon Fiber | <input type="checkbox"/> AM Cobalt        | <input type="checkbox"/> AM Phantom       |
|                                     | <input type="checkbox"/> AM Phantom II   | <input type="checkbox"/> AM Sport Comp    | <input type="checkbox"/> AM Sport Comp II |
|                                     | <input type="checkbox"/> AM Ultra-Lite   | <input type="checkbox"/> AM Ultra-Lite II |   |
| <b>Mechanical</b>                   | <input type="checkbox"/> AM Ultra-Lite   | <input type="checkbox"/> AM Phantom       | <input type="checkbox"/> AM Sport Comp    |

AM = Auto Meter

### COMPLETE PACKAGE COMES WITH...

- 5" Speedometer
  - 5" Tachometer
  - 2-5/8" Fuel Level Gauge
  - 2-5/8" Oil Pressure Gauge
  - 2-5/8" Water Temp. Gauge
  - 2-5/8" Volt Gauge
- Control options:** N/A
- Wiring options:**  Gauge wiring harness\*  
 Turning Signal, High Beam & Parking Brake Indicator (LED) Kit\*

\*Auto Meter electric gauge packages come with a wiring harness plus water temp and oil pressure sending units. However you must purchase a speedometer sending unit to match your transmission or a GPS receiver.  
Mechanical gauge packages do not come with a wiring harness.

### Applicable Accessories:

- GPS speedometer interface module
- Electric speedometer sending unit
- Speed sensor pigtail GM 4LE60/4LE80
- Wiring harness w/LED
- Speedometer adapter for mechanical gauges
- Power Plus 20 series wiring kit
- LS engine tach wire harness
- LS plug and play tach adapter and harness
- LS motor installation kit
- LED and terminal kit
- Tach adapter
- LED gauge light dimmer switch

# CLASSIC DASH APPLICATION GUIDE



Multiple gauge sizes are offered for this application.

## 1962-64 Nova / Chevy II

- |                                     |   |   |  |
|-------------------------------------|---|---|--|
| <b>Panel finish:</b>                | <input type="checkbox"/> Matte Black      | <input type="checkbox"/> Brushed Aluminum   | <input type="checkbox"/> Carbon Fiber  |
| <b>Gauge style: <b>Electric</b></b> | <input type="checkbox"/> AM C2            | <input type="checkbox"/> AM Carbon Fiber    | <input type="checkbox"/> AM Cobalt     |
|                                     | <input type="checkbox"/> AM NV            | <input type="checkbox"/> AM Phantom         | <input type="checkbox"/> AM Phantom II |
|                                     | <input type="checkbox"/> AM Sport Comp    | <input type="checkbox"/> AM Sport Comp II   | <input type="checkbox"/> AM Ultra-Lite |
|                                     | <input type="checkbox"/> AM Ultra-Lite II | <input type="checkbox"/> AM American Muscle | <input type="checkbox"/> AM GT         |
|                                     | <input type="checkbox"/> TR Silver        | <input type="checkbox"/> TR White           | <input type="checkbox"/> TR Black      |
| <b>Mechanical</b>                   | <input type="checkbox"/> AM Ultra-Lite    | <input type="checkbox"/> AM Phantom         | <input type="checkbox"/> AM Sport Comp |

AM = Auto Meter TR = Thunder Road Concourse Series

### COMPLETE PACKAGE COMES WITH...

- 3-3/8" Speedometer
- 3-3/8" Tachometer
- 2-1/16" Fuel Level Gauge
- 2-1/16" Oil Pressure Gauge
- 2-1/16" Water Temp. Gauge
- 2-1/16" Volt Gauge

**Gauge size options:** 1-piece panel with gauges

**Control options:** N/A

- Wiring options:**
- Gauge wiring harness\*
  - Turning Signal, High Beam & Parking Brake Indicator (LED) Kit\*

\*Auto Meter electric gauge packages come with a wiring harness plus water temp and oil pressure sending units. However you must purchase a speedometer sending unit to match your transmission or a GPS receiver. Mechanical gauge packages do not come with a wiring harness. Concourse packages come with oil pressure and water temp sending units only—no wiring harness or LED lights (must be purchased separately).

### Applicable Accessories:

- GPS speedometer interface module
- Electric speedometer sending unit
- Speed sensor pigtail GM 4LE60/4LE80
- Gauge wiring harness w/LED kit
- Speedometer adapter for mechanical gauges
- Classic Update series wiring kit
- LS engine tach wire harness
- LS plug and play tach adapter and harness
- LS motor installation kit
- LED and terminal kit
- Tach adapter
- LED gauge light dimmer switch

Upgrade to 0-90 ohm fuel sender may be required with certain gauges.

# CLASSIC DASH APPLICATION GUIDE



Multiple gauge sizes are offered for this application.

## 1965 Nova / Chevy II

- |                                     |   |   |  |
|-------------------------------------|---|---|--|
| <b>Panel finish:</b>                | <input type="checkbox"/> Matte Black      | <input type="checkbox"/> Brushed Aluminum   | <input type="checkbox"/> Carbon Fiber  |
| <b>Gauge style: <b>Electric</b></b> | <input type="checkbox"/> AM C2            | <input type="checkbox"/> AM Carbon Fiber    | <input type="checkbox"/> AM Cobalt     |
|                                     | <input type="checkbox"/> AM NV            | <input type="checkbox"/> AM Phantom         | <input type="checkbox"/> AM Phantom II |
|                                     | <input type="checkbox"/> AM Sport Comp    | <input type="checkbox"/> AM Sport Comp II   | <input type="checkbox"/> AM Ultra-Lite |
|                                     | <input type="checkbox"/> AM Ultra-Lite II | <input type="checkbox"/> AM American Muscle |  |
|                                     | <input type="checkbox"/> TR Silver        | <input type="checkbox"/> TR White           | <input type="checkbox"/> TR Black      |
| <b>Mechanical</b>                   | <input type="checkbox"/> AM Ultra-Lite    | <input type="checkbox"/> AM Phantom         | <input type="checkbox"/> AM Sport Comp |

AM = Auto Meter TR = Thunder Road Concourse Series

### COMPLETE PACKAGE COMES WITH...

- 3-3/8" Speedometer
  - 3-3/8" Tachometer
  - 2-1/16" Fuel Level Gauge
  - 2-1/16" Oil Pressure Gauge
  - 2-1/16" Water Temp. Gauge
  - 2-1/16" Volt Gauge
- Gauge size options:** 1965 Nova/Chevy II 1-piece 6-gauge panel
- Control options:** N/A
- Wiring options:**  Gauge wiring harness\*  
 Turning Signal, High Beam & Parking Brake Indicator (LED) Kit\*

\*Auto Meter electric gauge packages come with a wiring harness plus water temp and oil pressure sending units. However you must purchase a speedometer sending unit to match your transmission or a GPS receiver. Mechanical gauge packages do not come with a wiring harness. Concourse packages come with oil pressure and water temp sending units only—no wiring harness or LED lights (must be purchased separately).

### Applicable Accessories:

- GPS speedometer interface module
- Electric speedometer sending unit
- Speed sensor pigtail GM 4LE60/4LE80
- Gauge wiring harness w/LED kit
- Speedometer adapter for mechanical gauges
- Classic Update series wiring kit
- LS engine tach wire harness
- LS plug and play tach adapter and harness
- LS motor installation kit
- LED and terminal kit
- Tach adapter
- LED gauge light dimmer switch

# CLASSIC DASH APPLICATION GUIDE



## 1966-67 Nova / Chevy II

- Panel finish:**  Matte Black  Brushed Aluminum  Carbon Fiber
- Gauge style: Electric**  AM C2  AM Carbon Fiber  AM Cobalt
- AM NV  AM Phantom  AM Phantom II
- AM Sport Comp  AM Sport Comp II  AM Ultra-Lite
- AM Ultra-Lite II  AM American Muscle  AM GT
- TR Silver  TR White  TR Black
- Mechanical**  AM Ultra-Lite  AM Phantom  AM Sport Comp

AM = Auto Meter TR = Thunder Road Concourse Series

### COMPLETE PACKAGE COMES WITH...

- 3-3/8" Speedometer  3-3/8" Tachometer  2-1/16" Fuel Level Gauge  
 2-1/16" Oil Pressure Gauge  2-1/16" Water Temp. Gauge  2-1/16" Volt Gauge

**Control options:** N/A

- Wiring options:**  Gauge wiring harness\*  
 Turning Signal, High Beam & Parking Brake Indicator (LED) Kit\*

\*Auto Meter electric gauge packages come with a wiring harness plus water temp and oil pressure sending units. However you must purchase a speedometer sending unit to match your transmission or a GPS receiver. Mechanical gauge packages do not come with a wiring harness. Concourse packages come with oil pressure and water temp sending units only—no wiring harness or LED lights (must be purchased separately).

### Applicable Accessories:

- GPS speedometer interface module
- Electric speedometer sending unit
- Brushed aluminum glove box cover
- Black glove box cover
- Carbon fiber glove box cover
- Gauge wiring harness w/LED kit
- Speedometer adapter for mechanical gauges
- Classic Update series wiring kit
- LS plug and play tach adapter and harness
- LS motor installation kit
- LED and terminal kit
- Tach adapter
- LED gauge light dimmer switch

# CLASSIC DASH APPLICATION GUIDE



Multiple gauge sizes are offered for this application.

## 1968 Nova / Chevy II

- |                                     |   |   |  |
|-------------------------------------|---|---|--|
| <b>Panel finish:</b>                | <input type="checkbox"/> Matte Black      | <input type="checkbox"/> Brushed Aluminum   | <input type="checkbox"/> Carbon Fiber  |
| <b>Gauge style: <b>Electric</b></b> | <input type="checkbox"/> AM C2            | <input type="checkbox"/> AM Carbon Fiber    | <input type="checkbox"/> AM Cobalt     |
|                                     | <input type="checkbox"/> AM NV            | <input type="checkbox"/> AM Phantom         | <input type="checkbox"/> AM Phantom II |
|                                     | <input type="checkbox"/> AM Sport Comp    | <input type="checkbox"/> AM Sport Comp II   | <input type="checkbox"/> AM Ultra-Lite |
|                                     | <input type="checkbox"/> AM Ultra-Lite II | <input type="checkbox"/> AM American Muscle | <input type="checkbox"/> AM GT         |
|                                     | <input type="checkbox"/> TR Silver        | <input type="checkbox"/> TR White           | <input type="checkbox"/> TR Black      |
| <b>Mechanical</b>                   | <input type="checkbox"/> AM Ultra-Lite    | <input type="checkbox"/> AM Phantom         | <input type="checkbox"/> AM Sport Comp |

AM = Auto Meter TR = Thunder Road Concourse Series

### COMPLETE PACKAGE COMES WITH...

- 3-3/8" Speedometer
  - 3-3/8" Tachometer
  - 2-1/16" Fuel Level Gauge
  - 2-1/16" Oil Pressure Gauge
  - 2-1/16" Water Temp. Gauge
  - 2-1/16" Volt Gauge
- Gauge size options:** 1968-74 Nova center console pod with gauges
- Control options:** N/A
- Wiring options:**
- Gauge wiring harness\*
  - Turning Signal, High Beam & Parking Brake Indicator (LED) Kit\*

\*Auto Meter electric gauge packages come with a wiring harness plus water temp and oil pressure sending units. However you must purchase a speedometer sending unit to match your transmission or a GPS receiver. Mechanical gauge packages do not come with a wiring harness. Concourse packages come with oil pressure and water temp sending units only—no wiring harness or LED lights (must be purchased separately).

### Applicable Accessories:

- GPS speedometer interface module
- Electric speedometer sending unit
- Speed sensor pigtail GM 4LE60/4LE80
- Gauge wiring harness w/LED kit
- Speedometer adapter for mechanical gauges
- Classic Update series wiring kit
- Power Plus 20 series wiring kit
- LS engine tach wire harness
- LS plug and play tach adapter and harness
- LS motor installation kit
- LED and terminal kit
- Tach adapter
- LED gauge light dimmer switch

Steering column undercovers are **INCLUDED** with purchase of dash panel.

# CLASSIC DASH APPLICATION GUIDE



Multiple gauge sizes are offered for this application.

## 1969-76 Chevy Nova

- |                                     |   |   |  |
|-------------------------------------|---|---|--|
| <b>Panel finish:</b>                | <input type="checkbox"/> Matte Black      | <input type="checkbox"/> Brushed Aluminum   | <input type="checkbox"/> Carbon Fiber  |
| <b>Gauge style: <b>Electric</b></b> | <input type="checkbox"/> AM C2            | <input type="checkbox"/> AM Carbon Fiber    | <input type="checkbox"/> AM Cobalt     |
|                                     | <input type="checkbox"/> AM NV            | <input type="checkbox"/> AM Phantom         | <input type="checkbox"/> AM Phantom II |
|                                     | <input type="checkbox"/> AM Sport Comp    | <input type="checkbox"/> AM Sport Comp II   | <input type="checkbox"/> AM Ultra-Lite |
|                                     | <input type="checkbox"/> AM Ultra-Lite II | <input type="checkbox"/> AM American Muscle | <input type="checkbox"/> AM GT         |
| <b>Mechanical</b>                   | <input type="checkbox"/> AM Ultra-Lite    | <input type="checkbox"/> AM Phantom         | <input type="checkbox"/> AM Sport Comp |

AM = Auto Meter

### COMPLETE PACKAGE COMES WITH...

- 5" Speedometer
  - 5" Tachometer
  - 2-1/16" Fuel Level Gauge
  - 2-1/16" Oil Pressure Gauge
  - 2-1/16" Water Temp. Gauge
  - 2-1/16" Volt Gauge
- Gauge size options:** 1968-74 Nova center console pod with gauges
- Control options:** N/A
- Vent options:** Available with or without vents
- Wiring options:**
- Gauge wiring harness\*
  - Turning Signal, High Beam & Parking Brake Indicator (LED) Kit\*

\*Auto Meter electric gauge packages come with a wiring harness plus water temp and oil pressure sending units. However you must purchase a speedometer sending unit to match your transmission or a GPS receiver. Mechanical gauge packages do not come with a wiring harness.

### Applicable Accessories:

- GPS speedometer interface module
- Electric speedometer sending unit
- Speed sensor pigtail GM 4LE60/4LE80
- Gauge wiring harness w/LED kit
- Speedometer adapter for mechanical gauges
- Classic Update series wiring kit
- Power Plus 20 series wiring kit
- LS engine tach wire harness
- LS plug and play tach adapter and harness
- LS motor installation kit
- LED and terminal kit
- Tach adapter
- LED gauge light dimmer switch

Steering column undercovers are **INCLUDED** with purchase of dash panel.

# CLASSIC DASH APPLICATION GUIDE



## 1977-79 Chevy Nova

- Panel finish:**  Matte Black  Brushed Aluminum  Carbon Fiber
- Gauge style: Electric**  AM C2  AM Carbon Fiber  AM Cobalt
- AM NV  AM Phantom  AM Phantom II
- AM Sport Comp  AM Sport Comp II  AM Ultra-Lite
- AM Ultra-Lite II  AM American Muscle  AM GT
- TR Silver  TR White  TR Black
- Mechanical**  AM Ultra-Lite  AM Phantom  AM Sport Comp

AM = Auto Meter TR = Thunder Road Concourse Series

### COMPLETE PACKAGE COMES WITH...

- 3-3/8" Speedometer  3-3/8" Tachometer  2-1/16" Fuel Level Gauge  
 2-1/16" Oil Pressure Gauge  2-1/16" Water Temp. Gauge  2-1/16" Volt Gauge

**Control options:** N/A

**Vent options:** Available with or without vents

**Wiring options:**  Gauge wiring harness\*  
 Turning Signal, High Beam & Parking Brake Indicator (LED) Kit\*

\*Auto Meter electric gauge packages come with a wiring harness plus water temp and oil pressure sending units. However you must purchase a speedometer sending unit to match your transmission or a GPS receiver. Mechanical gauge packages do not come with a wiring harness. Concourse packages come with oil pressure and water temp sending units only—no wiring harness or LED lights (must be purchased separately).

### Applicable Accessories:

- GPS speedometer interface module
- Electric speedometer sending unit
- Speed sensor pigtail GM 4LE60/4LE80
- Gauge wiring harness w/LED kit
- Speedometer adapter for mechanical gauges
- Power Plus 20 series wiring kit
- LS engine tach wire harness
- LS plug and play tach adapter and harness
- LS motor installation kit
- LED and terminal kit
- Tach adapter
- LED gauge light dimmer switch



# CLASSIC DASH APPLICATION GUIDE



## 1982-86 Chevy S-10

- Panel finish:**  Matte Black  Brushed Aluminum  Carbon Fiber
- Gauge style: Electric**  AM C2  AM Carbon Fiber  AM Cobalt
- AM NV  AM Phantom  AM Phantom II
- AM Sport Comp  AM Sport Comp II  AM Ultra-Lite
- AM Ultra-Lite II  AM American Muscle  AM GT
- TR Silver  TR White  TR Black
- Mechanical**  AM Ultra-Lite  AM Phantom  AM Sport Comp

AM = Auto Meter TR = Thunder Road Concourse Series

### COMPLETE PACKAGE COMES WITH...

- 3-3/8" Speedometer  3-3/8" Tachometer  2-1/16" Fuel Level Gauge  
 2-1/16" Oil Pressure Gauge  2-1/16" Water Temp. Gauge  2-1/16" Volt Gauge

**Control options:** N/A

- Wiring options:**  Gauge wiring harness\*  
 Turning Signal, High Beam & Parking Brake Indicator (LED) Kit\*

\*Auto Meter electric gauge packages come with a wiring harness plus water temp and oil pressure sending units. However you must purchase a speedometer sending unit to match your transmission or a GPS receiver. Mechanical gauge packages do not come with a wiring harness. Concourse packages come with oil pressure and water temp sending units only—no wiring harness or LED lights (must be purchased separately).

### Applicable Accessories:

- GPS speedometer interface module
- Electric speedometer sending unit
- Speed sensor pigtail GM 4LE60/4LE80
- Gauge wiring harness w/LED kit
- Speedometer adapter for mechanical gauges
- Power Plus 20 series wiring kit
- LS engine tach wire harness
- LS plug and play tach adapter and harness
- LS motor installation kit
- LED and terminal kit
- Tach adapter
- LED gauge light dimmer switch

# CLASSIC DASH APPLICATION GUIDE



## 1955-56 Chevy Bel Air or Nomad

- Panel finish:**  Matte Black  Brushed Aluminum  Carbon Fiber
- Gauge style: Electric**  AM C2  AM Carbon Fiber  AM Cobalt
- AM NV  AM Phantom  AM Phantom II
- AM Sport Comp  AM Sport Comp II  AM Ultra-Lite
- AM Ultra-Lite II  AM American Muscle  AM GT
- TR Silver  TR White  TR Black
- Mechanical**  AM Ultra-Lite  AM Phantom  AM Sport Comp

AM = Auto Meter TR = Thunder Road Concourse Series

### COMPLETE PACKAGE COMES WITH...

- 3-3/8" Speedometer  3-3/8" Tachometer  2-1/16" Fuel Level Gauge  
 2-1/16" Oil Pressure Gauge  2-1/16" Water Temp. Gauge  2-1/16" Volt Gauge  
(0-30 ohm gauge available in Sport Comp, Ultra-Lite and Phantom gauges ONLY)

**Control options:** N/A

- Wiring options:**  Gauge wiring harness\*  
 Turning Signal, High Beam & Parking Brake Indicator (LED) Kit\*

\*Auto Meter electric gauge packages come with a wiring harness plus water temp and oil pressure sending units. However you must purchase a speedometer sending unit to match your transmission or a GPS receiver. Mechanical gauge packages do not come with a wiring harness. Concourse packages come with oil pressure and water temp sending units only—no wiring harness or LED lights (must be purchased separately).

### Applicable Accessories:

- GPS speedometer interface module
- Electric speedometer sending unit
- Speed sensor pigtail GM T56
- Gauge wiring harness w/LED kit
- Speedometer adapter for mechanical gauges
- Power Plus 20 series wiring kit
- LED and terminal kit
- LED gauge light dimmer switch

Upgrade to 0-90 ohm fuel sender may be required with certain gauges.

# CLASSIC DASH APPLICATION GUIDE



## 1957 Chevy Bel Air or Nomad

- Panel finish:**  Matte Black  Brushed Aluminum  Carbon Fiber
- Gauge style: Electric**  AM C2  AM Carbon Fiber  AM Cobalt
- AM NV  AM Phantom  AM Phantom II
- AM Sport Comp  AM Sport Comp II  AM Ultra-Lite
- AM Ultra-Lite II  AM American Muscle  AM GT
- TR Silver  TR White  TR Black
- Mechanical**  AM Ultra-Lite  AM Phantom  AM Sport Comp

AM = Auto Meter TR = Thunder Road Concourse Series

### COMPLETE PACKAGE COMES WITH...

- 3-3/8" Speedometer  3-3/8" Tachometer  2-1/16" Fuel Level Gauge  
 2-1/16" Oil Pressure Gauge  2-1/16" Water Temp. Gauge  2-1/16" Volt Gauge  
(0-30 ohm gauge available in Sport Comp, Ultra-Lite and Phantom gauges ONLY)

**Control options:** N/A

- Wiring options:**  Gauge wiring harness\*  
 Turning Signal, High Beam & Parking Brake Indicator (LED) Kit\*

\*Auto Meter electric gauge packages come with a wiring harness plus water temp and oil pressure sending units. However you must purchase a speedometer sending unit to match your transmission or a GPS receiver. Mechanical gauge packages do not come with a wiring harness. Concourse packages come with oil pressure and water temp sending units only—no wiring harness or LED lights (must be purchased separately).

### Applicable Accessories:

- GPS speedometer interface module
- Electric speedometer sending unit
- Speed sensor pigtail GM 4LE60/4LE80
- Gauge wiring harness w/LED kit
- Speedometer adapter for mechanical gauges
- Power Plus 20 series wiring kit
- LS engine tach wire harness
- LS plug and play tach adapter and harness
- LS motor installation kit
- LED and terminal kit
- Tach adapter
- LED gauge light dimmer switch

Upgrade to 0-90 ohm fuel sender may be required with certain gauges.

# CLASSIC DASH APPLICATION GUIDE



## 1970-74 Challenger / Cuda

- Panel finish:**  Matte Black  Brushed Aluminum  Carbon Fiber
- Gauge style: Electric**  AM C2  AM Carbon Fiber  AM Cobalt
- AM NV  AM Phantom  AM Phantom II
- AM Sport Comp  AM Sport Comp II  AM Ultra-Lite
- AM Ultra-Lite II  AM American Muscle  AM GT
- TR Silver  TR White  TR Black
- Mechanical**  AM Ultra-Lite  AM Phantom  AM Sport Comp

AM = Auto Meter TR = Thunder Road Concourse Series

### COMPLETE PACKAGE COMES WITH...

- 3-3/8" Speedometer  3-3/8" Tachometer  2-1/16" Fuel Level Gauge  
 2-1/16" Oil Pressure Gauge  2-1/16" Water Temp. Gauge  2-1/16" Volt Gauge

**Control options:** N/A

- Wiring options:**  Gauge wiring harness\*  
 Turning Signal, High Beam & Parking Brake Indicator (LED) Kit\*

\*Auto Meter electric gauge packages come with a wiring harness plus water temp and oil pressure sending units. However you must purchase a speedometer sending unit to match your transmission or a GPS receiver. Mechanical gauge packages do not come with a wiring harness. Concourse packages come with oil pressure and water temp sending units only—no wiring harness or LED lights (must be purchased separately).

### Applicable Accessories:

- GPS speedometer interface module
- Electric speedometer sending unit
- Gauge wiring harness w/LED kit
- Speedometer adapter for mechanical gauges
- Classic Update series wiring kit
- Power Plus 20 series wiring kit
- LED and terminal kit
- LED gauge light dimmer switch

# CLASSIC DASH APPLICATION GUIDE



## 1968-70 MOPAR B-Body (excludes Satellite Models)

- Panel finish:**  Matte Black  Brushed Aluminum  Carbon Fiber
- Gauge style: Electric**  AM C2  AM Carbon Fiber  AM Cobalt
- AM NV  AM Phantom  AM Phantom II
- AM Sport Comp  AM Sport Comp II  AM Ultra-Lite
- AM Ultra-Lite II  AM American Muscle  AM GT
- TR Silver  TR White  TR Black
- Mechanical**  AM Ultra-Lite  AM Phantom  AM Sport Comp

AM = Auto Meter TR = Thunder Road Concourse Series

### COMPLETE PACKAGE COMES WITH...

- 3-3/8" Speedometer  3-3/8" Tachometer  2-1/16" Fuel Level Gauge  
 2-1/16" Oil Pressure Gauge  2-1/16" Water Temp. Gauge  2-1/16" Volt Gauge

**Control options:** N/A

- Wiring options:**  Gauge wiring harness\*  
 Turning Signal, High Beam & Parking Brake Indicator (LED) Kit\*

\*Auto Meter electric gauge packages come with a wiring harness plus water temp and oil pressure sending units. However you must purchase a speedometer sending unit to match your transmission or a GPS receiver. Mechanical gauge packages do not come with a wiring harness. Concourse packages come with oil pressure and water temp sending units only—no wiring harness or LED lights (must be purchased separately).

### Applicable Accessories:

- GPS speedometer interface module
- Electric speedometer sending unit
- Gauge wiring harness w/LED kit
- Speedometer adapter for mechanical gauges
- Classic Update series wiring kit
- Power Plus 20 series wiring kit
- LED and terminal kit
- LED gauge light dimmer switch

*This panel is an OVERLAY for your dash. DO NOT CUT OUT YOUR SWITCHES.  
Does NOT fit Plymouth Satellite; FABRICATION REQUIRED.*

# CLASSIC DASH APPLICATION GUIDE



## 1971-74 Charger / Roadrunner

- Panel finish:**  Matte Black  Brushed Aluminum  Carbon Fiber
- Gauge style: Electric**  AM C2  AM Carbon Fiber  AM Cobalt
- AM NV  AM Phantom  AM Phantom II
- AM Sport Comp  AM Sport Comp II  AM Ultra-Lite
- AM Ultra-Lite II  AM American Muscle  AM GT
- TR Silver  TR White  TR Black
- Mechanical**  AM Ultra-Lite  AM Phantom  AM Sport Comp

AM = Auto Meter TR = Thunder Road Concourse Series

### COMPLETE PACKAGE COMES WITH...

- 3-3/8" Speedometer  3-3/8" Tachometer  2-1/16" Fuel Level Gauge
- 2-1/16" Oil Pressure Gauge  2-1/16" Water Temp. Gauge  2-1/16" Volt Gauge
- Control options:** N/A
- Wiring options:**  Gauge wiring harness\*
- Turning Signal, High Beam & Parking Brake Indicator (LED) Kit\*

\*Auto Meter electric gauge packages come with a wiring harness plus water temp and oil pressure sending units. However you must purchase a speedometer sending unit to match your transmission or a GPS receiver. Mechanical gauge packages do not come with a wiring harness. Concourse packages come with oil pressure and water temp sending units only—no wiring harness or LED lights (must be purchased separately).

### Applicable Accessories:

- GPS speedometer interface module
- Electric speedometer sending unit
- Gauge wiring harness w/LED kit
- Speedometer adapter for mechanical gauges
- Speed sensor pigtail T56
- Power Plus 20 series wiring kit
- LED and terminal kit
- LED gauge light dimmer switch

# CLASSIC DASH APPLICATION GUIDE



## 1970-76 MOPAR A-Body (excludes Swinger models)

- Panel finish:**  Matte Black  Brushed Aluminum  Carbon Fiber
- Gauge style: Electric**  AM C2  AM Carbon Fiber  AM Cobalt
- AM NV  AM Phantom  AM Phantom II
- AM Sport Comp  AM Sport Comp II  AM Ultra-Lite
- AM Ultra-Lite II  AM American Muscle  AM GT
- TR Silver  TR White  TR Black
- Mechanical**  AM Ultra-Lite  AM Phantom  AM Sport Comp

AM = Auto Meter TR = Thunder Road Concourse Series

### COMPLETE PACKAGE COMES WITH...

- 3-3/8" Speedometer  3-3/8" Tachometer  2-1/16" Fuel Level Gauge  
 2-1/16" Oil Pressure Gauge  2-1/16" Water Temp. Gauge  2-1/16" Volt Gauge

**Control options:** N/A

- Wiring options:**  Gauge wiring harness\*  
 Turning Signal, High Beam & Parking Brake Indicator (LED) Kit\*

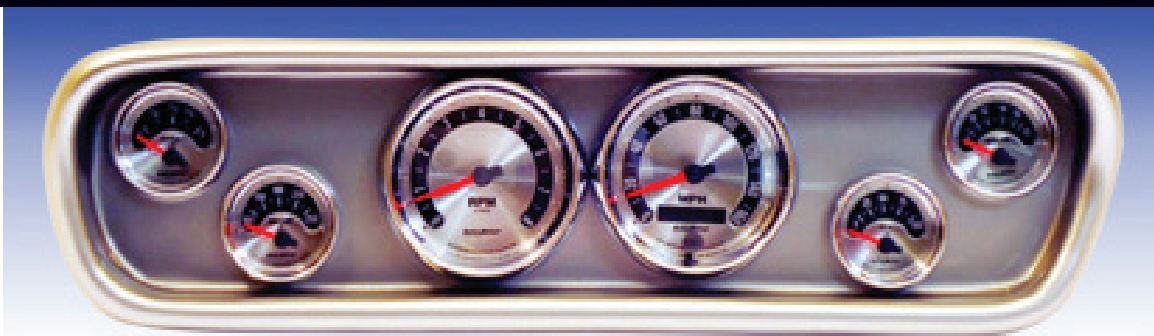
\*Auto Meter electric gauge packages come with a wiring harness plus water temp and oil pressure sending units. However you must purchase a speedometer sending unit to match your transmission or a GPS receiver. Mechanical gauge packages do not come with a wiring harness. Concourse packages come with oil pressure and water temp sending units only—no wiring harness or LED lights (must be purchased separately).

### Applicable Accessories:

- GPS speedometer interface module
- Electric speedometer sending unit
- Gauge wiring harness w/LED kit
- Speedometer adapter for mechanical gauges
- Classic Update series wiring kit
- Power Plus 20 series wiring kit
- LED and terminal kit
- LED gauge light dimmer switch

*This dash panel will NOT fit any Swinger models.*

# CLASSIC DASH APPLICATION GUIDE



## 1964-66 Ford Mustang

- Panel finish:**  Matte Black  Brushed Aluminum  Carbon Fiber
- Gauge style: Electric**  AM C2  AM Carbon Fiber  AM Cobalt
- AM NV  AM Phantom  AM Phantom II
- AM Sport Comp  AM Sport Comp II  AM Ultra-Lite
- AM Ultra-Lite II  AM American Muscle  AM GT
- TR Silver  TR White  TR Black
- Mechanical**  AM Ultra-Lite  AM Phantom  AM Sport Comp

AM = Auto Meter TR = Thunder Road Concourse Series

### COMPLETE PACKAGE COMES WITH...

- 3-3/8" Speedometer  3-3/8" Tachometer  2-1/16" Fuel Level Gauge  
 2-1/16" Oil Pressure Gauge  2-1/16" Water Temp. Gauge  2-1/16" Volt Gauge

**Control options:** N/A

- Wiring options:**  Gauge wiring harness\*  
 Turning Signal, High Beam & Parking Brake Indicator (LED) Kit\*

\*Auto Meter electric gauge packages come with a wiring harness plus water temp and oil pressure sending units. However you must purchase a speedometer sending unit to match your transmission or a GPS receiver. Mechanical gauge packages do not come with a wiring harness. Concourse packages come with oil pressure and water temp sending units only—no wiring harness or LED lights (must be purchased separately).

### Applicable Accessories:

- GPS speedometer interface module
- Electric speedometer sending unit
- Gauge wiring harness w/LED kit
- Mechanical speedometer cable adapter
- Classic Update series wiring kit
- Speed sensor pigtail T56
- LED and terminal kit
- LED gauge light dimmer switch



# CLASSIC DASH APPLICATION GUIDE



## 1979-86 Ford Mustang

- Panel finish:**  Matte Black  Brushed Aluminum  Carbon Fiber
- Gauge style: Electric**  AM C2  AM Carbon Fiber  AM Cobalt
- AM NV  AM Phantom  AM Phantom II
- AM Sport Comp  AM Sport Comp II  AM Ultra-Lite
- AM Ultra-Lite II  AM American Muscle  AM GT
- TR Silver  TR White  TR Black
- Mechanical**  AM Ultra-Lite  AM Phantom  AM Sport Comp

AM = Auto Meter TR = Thunder Road Concourse Series

### COMPLETE PACKAGE COMES WITH...

- 3-3/8" Speedometer  3-3/8" Tachometer  2-1/16" Fuel Level Gauge
- 2-1/16" Oil Pressure Gauge  2-1/16" Water Temp. Gauge  2-1/16" Volt Gauge
- Control options:** N/A
- Wiring options:**  Gauge wiring harness\*
- Turning Signal, High Beam & Parking Brake Indicator (LED) Kit\*

\*Auto Meter electric gauge packages come with a wiring harness plus water temp and oil pressure sending units. However you must purchase a speedometer sending unit to match your transmission or a GPS receiver. Mechanical gauge packages do not come with a wiring harness. Concourse packages come with oil pressure and water temp sending units only—no wiring harness or LED lights (must be purchased separately).

### Applicable Accessories:

- GPS speedometer interface module
- Electric speedometer sending unit
- Gauge wiring harness w/LED kit
- Mechanical speedometer cable adapter
- Power Plus 20 series wiring kit
- Speed sensor pigtail T56
- LED and terminal kit
- LED gauge light dimmer switch

# CLASSIC DASH APPLICATION GUIDE



## 1987-89 Ford Mustang

- Panel finish:**  Matte Black  Brushed Aluminum  Carbon Fiber
- Gauge style: Electric**  AM C2  AM Carbon Fiber  AM Cobalt
- AM NV  AM Phantom  AM Phantom II
- AM Sport Comp  AM Sport Comp II  AM Ultra-Lite
- AM Ultra-Lite II  AM American Muscle  AM GT
- TR Silver  TR White  TR Black
- Mechanical**  AM Ultra-Lite  AM Phantom  AM Sport Comp

AM = Auto Meter TR = Thunder Road Concourse Series

### COMPLETE PACKAGE COMES WITH...

- 3-3/8" Speedometer  3-3/8" Tachometer  2-1/16" Fuel Level Gauge  
 2-1/16" Oil Pressure Gauge  2-1/16" Water Temp. Gauge  2-1/16" Volt Gauge

**Control options:** N/A

- Wiring options:**  Gauge wiring harness\*  
 Turning Signal, High Beam & Parking Brake Indicator (LED) Kit\*  
 Indicator/warning lights and harness

*\*Auto Meter electric gauge packages come with a wiring harness plus water temp and oil pressure sending units. However you must purchase a speedometer sending unit to match your transmission or a GPS receiver. Mechanical gauge packages do not come with a wiring harness. Concourse packages come with oil pressure and water temp sending units only—no wiring harness or LED lights (must be purchased separately).*

### Applicable Accessories:

- GPS speedometer interface module
- Electric speedometer sending unit
- Gauge wiring harness w/LED kit
- Mechanical speedometer cable adapter
- Power Plus 20 series wiring kit
- Speed sensor pigtail T56
- LED and terminal kit
- LED gauge light dimmer switch

# CLASSIC DASH APPLICATION GUIDE



## 1990-93 Ford Mustang

- Panel finish:**  Matte Black  Brushed Aluminum  Carbon Fiber
- Gauge style: Electric**  AM C2  AM Carbon Fiber  AM Cobalt
- AM NV  AM Phantom  AM Phantom II
- AM Sport Comp  AM Sport Comp II  AM Ultra-Lite
- AM Ultra-Lite II  AM American Muscle
- TR Silver  TR White  TR Black
- Mechanical**  AM Ultra-Lite  AM Phantom  AM Sport Comp

AM = Auto Meter TR = Thunder Road Concourse Series

### COMPLETE PACKAGE COMES WITH...

- 3-3/8" Speedometer  3-3/8" Tachometer  2-1/16" Fuel Level Gauge  
 2-1/16" Oil Pressure Gauge  2-1/16" Water Temp. Gauge  2-1/16" Volt Gauge

**Control options:** N/A

- Wiring options:**  Gauge wiring harness\*  
 Turning Signal, High Beam & Parking Brake Indicator (LED) Kit\*

\*Auto Meter electric gauge packages come with a wiring harness plus water temp and oil pressure sending units. However you must purchase a speedometer sending unit to match your transmission or a GPS receiver. Mechanical gauge packages do not come with a wiring harness. Concourse packages come with oil pressure and water temp sending units only—no wiring harness or LED lights (must be purchased separately).

### Applicable Accessories:

- GPS speedometer interface module
- Electric speedometer sending unit
- Gauge wiring harness w/LED kit
- Speedometer cable adapter
- Power Plus 20 series wiring kit
- Speed sensor pigtail T56
- LED and terminal kit
- LED gauge light dimmer switch

# CLASSIC DASH APPLICATION GUIDE



## 1994-04 Ford Mustang

- Panel finish:**  Matte Black
- Gauge style: Electric**  AM C2  AM Carbon Fiber  AM Cobalt  
 AM NV  AM Phantom  AM Phantom II  
 AM Sport Comp  AM Sport Comp II  AM Ultra-Lite  
 AM Ultra-Lite II  AM American Muscle  
 TR Silver  TR White  TR Black  
**Mechanical**  AM Ultra-Lite  AM Phantom  AM Sport Comp

AM = Auto Meter TR = Thunder Road Concourse Series

### COMPLETE PACKAGE COMES WITH...

- 3-3/8" Speedometer  3-3/8" Tachometer  2-1/16" Fuel Level Gauge  
 2-1/16" Oil Pressure Gauge  2-1/16" Water Temp. Gauge  2-1/16" Volt Gauge

**Control options:** N/A

- Wiring options:**  Gauge wiring harness\*  
 Turning Signal, High Beam & Parking Brake Indicator (LED) Kit\*

\*Auto Meter electric gauge packages come with a wiring harness plus water temp and oil pressure sending units. However you must purchase a speedometer sending unit to match your transmission or a GPS receiver. Mechanical gauge packages do not come with a wiring harness. Concourse packages come with oil pressure and water temp sending units only—no wiring harness or LED lights (must be purchased separately).

### Applicable Accessories:

- GPS speedometer interface module
- Electric speedometer sending unit
- Gauge wiring harness w/LED kit
- Mechanical speedometer cable adapter
- Power Plus 20 series wiring kit
- Speed sensor pigtail T56
- LED and terminal kit
- LED gauge light dimmer switch

1996 and later models require deactivation of the Passive Anti-Theft System (PATS). SCT has existing software to turn off the PATS.

This panel has not provisions for warning lights, the check engine light, or turn signal, high beam, and alternator charge indicators.

# CLASSIC DASH APPLICATION GUIDE



Multiple gauge sizes are offered for this application.

## 1957-60 Ford Truck

- |                                     |   |   |  |
|-------------------------------------|---|---|--|
| <b>Panel finish:</b>                | <input type="checkbox"/> Matte Black      | <input type="checkbox"/> Brushed Aluminum   | <input type="checkbox"/> Carbon Fiber  |
| <b>Gauge style: <b>Electric</b></b> | <input type="checkbox"/> AM C2            | <input type="checkbox"/> AM Carbon Fiber    | <input type="checkbox"/> AM Cobalt     |
|                                     | <input type="checkbox"/> AM NV            | <input type="checkbox"/> AM Phantom         | <input type="checkbox"/> AM Phantom II |
|                                     | <input type="checkbox"/> AM Sport Comp    | <input type="checkbox"/> AM Sport Comp II   | <input type="checkbox"/> AM Ultra-Lite |
|                                     | <input type="checkbox"/> AM Ultra-Lite II | <input type="checkbox"/> AM American Muscle | <input type="checkbox"/> AM GT         |
|                                     | <input type="checkbox"/> TR Silver        | <input type="checkbox"/> TR White           | <input type="checkbox"/> TR Black      |
| <b>Mechanical</b>                   | <input type="checkbox"/> AM Ultra-Lite    | <input type="checkbox"/> AM Phantom         | <input type="checkbox"/> AM Sport Comp |

AM = Auto Meter TR = Thunder Road Concourse Series

### COMPLETE PACKAGE COMES WITH...

- 3-3/8" Speedometer
  - 2-1/16" Fuel Level Gauge
  - 2-1/16" Oil Pressure Gauge
  - 2-1/16" Water Temp. Gauge
  - 2-1/16" Volt Gauge
- Gauge size options:** 1957-60 Ford truck 6-gauge panel
- Control options:** N/A
- Wiring options:**
- Gauge wiring harness\*
  - Turning Signal, High Beam & Parking Brake Indicator (LED) Kit\*

\*Auto Meter electric gauge packages come with a wiring harness plus water temp and oil pressure sending units. However you must purchase a speedometer sending unit to match your transmission or a GPS receiver. Mechanical gauge packages do not come with a wiring harness. Concourse packages come with oil pressure and water temp sending units only—no wiring harness or LED lights (must be purchased separately).

### Applicable Accessories:

- GPS speedometer interface module
- Electric speedometer sending unit
- Gauge wiring harness w/LED kit
- Mechanical speedometer cable adapter
- Classic Update series wiring kit
- Power Plus 20 series wiring kit
- LED and terminal kit
- LED gauge light dimmer switch

# CLASSIC DASH APPLICATION GUIDE



Multiple gauge sizes are offered for this application.

## 1961-66 Ford Truck

- |                                     |   |   |  |
|-------------------------------------|---|---|--|
| <b>Panel finish:</b>                | <input type="checkbox"/> Matte Black      | <input type="checkbox"/> Brushed Aluminum   | <input type="checkbox"/> Carbon Fiber  |
| <b>Gauge style: <b>Electric</b></b> | <input type="checkbox"/> AM C2            | <input type="checkbox"/> AM Carbon Fiber    | <input type="checkbox"/> AM Cobalt     |
|                                     | <input type="checkbox"/> AM NV            | <input type="checkbox"/> AM Phantom         | <input type="checkbox"/> AM Phantom II |
|                                     | <input type="checkbox"/> AM Sport Comp    | <input type="checkbox"/> AM Sport Comp II   | <input type="checkbox"/> AM Ultra-Lite |
|                                     | <input type="checkbox"/> AM Ultra-Lite II | <input type="checkbox"/> AM American Muscle | <input type="checkbox"/> AM GT         |
|                                     | <input type="checkbox"/> TR Silver        | <input type="checkbox"/> TR White           | <input type="checkbox"/> TR Black      |
| <b>Mechanical</b>                   | <input type="checkbox"/> AM Ultra-Lite    | <input type="checkbox"/> AM Phantom         | <input type="checkbox"/> AM Sport Comp |

AM = Auto Meter TR = Thunder Road Concourse Series

### COMPLETE PACKAGE COMES WITH...

- 3-3/8" Speedometer
  - 3-3/8" Tachometer
  - 2-1/16" Fuel Level Gauge
  - 2-1/16" Oil Pressure Gauge
  - 2-1/16" Water Temp. Gauge
  - 2-1/16" Volt Gauge
- Gauge size options:** 1961-66 Ford truck 5-gauge panel
- Control options:** N/A
- Wiring options:**
- Gauge wiring harness\*
  - Turning Signal, High Beam & Parking Brake Indicator (LED) Kit\*

\*Auto Meter electric gauge packages come with a wiring harness plus water temp and oil pressure sending units. However you must purchase a speedometer sending unit to match your transmission or a GPS receiver. Mechanical gauge packages do not come with a wiring harness. Concourse packages come with oil pressure and water temp sending units only—no wiring harness or LED lights (must be purchased separately).

### Applicable Accessories:

- GPS speedometer interface module
- Electric speedometer sending unit
- Gauge wiring harness w/LED kit
- Mechanical speedometer cable adapter
- Classic Update series wiring kit
- Power Plus 20 series wiring kit
- LED and terminal kit
- LED gauge light dimmer switch

# CLASSIC DASH APPLICATION GUIDE



Multiple gauge sizes are offered for this application.

## 1967-72 Ford Truck

- |                                     |   |   |  |
|-------------------------------------|---|---|--|
| <b>Panel finish:</b>                | <input type="checkbox"/> Matte Black      | <input type="checkbox"/> Brushed Aluminum   | <input type="checkbox"/> Carbon Fiber  |
| <b>Gauge style: <b>Electric</b></b> | <input type="checkbox"/> AM C2            | <input type="checkbox"/> AM Carbon Fiber    | <input type="checkbox"/> AM Cobalt     |
|                                     | <input type="checkbox"/> AM NV            | <input type="checkbox"/> AM Phantom         | <input type="checkbox"/> AM Phantom II |
|                                     | <input type="checkbox"/> AM Sport Comp    | <input type="checkbox"/> AM Sport Comp II   | <input type="checkbox"/> AM Ultra-Lite |
|                                     | <input type="checkbox"/> AM Ultra-Lite II | <input type="checkbox"/> AM American Muscle | <input type="checkbox"/> AM GT         |
|                                     | <input type="checkbox"/> TR Silver        | <input type="checkbox"/> TR White           | <input type="checkbox"/> TR Black      |
| <b>Mechanical</b>                   | <input type="checkbox"/> AM Ultra-Lite    | <input type="checkbox"/> AM Phantom         | <input type="checkbox"/> AM Sport Comp |

AM = Auto Meter TR = Thunder Road Concourse Series

### COMPLETE PACKAGE COMES WITH...

- 3-3/8" Speedometer
  - 3-3/8" Tachometer
  - 2-1/16" Fuel Level Gauge
  - 2-1/16" Oil Pressure Gauge
  - 2-1/16" Water Temp. Gauge
  - 2-1/16" Volt Gauge
- Gauge size options:** 1967-72 Ford truck 5-gauge panel
- Control options:** N/A
- Wiring options:**
- Gauge wiring harness\*
  - Turning Signal, High Beam & Parking Brake Indicator (LED) Kit\*

\*Auto Meter electric gauge packages come with a wiring harness plus water temp and oil pressure sending units. However you must purchase a speedometer sending unit to match your transmission or a GPS receiver. Mechanical gauge packages do not come with a wiring harness. Concourse packages come with oil pressure and water temp sending units only—no wiring harness or LED lights (must be purchased separately).

### Applicable Accessories:

- GPS speedometer interface module
- Electric speedometer sending unit
- Gauge wiring harness w/LED kit
- Speedometer cable adapter
- Speed sensor pigtail T56
- Power Plus 20 series wiring kit
- LED and terminal kit
- LED gauge light dimmer switch

# CLASSIC DASH APPLICATION GUIDE



## 1973-79 Ford Truck

- Panel finish:**  Matte Black  Brushed Aluminum  Carbon Fiber
- Gauge style: Electric**  AM C2  AM Carbon Fiber  AM Cobalt
- AM NV  AM Phantom  AM Phantom II
- AM Sport Comp  AM Sport Comp II  AM Ultra-Lite
- AM Ultra-Lite II  AM American Muscle  AM GT
- TR Silver  TR White  TR Black
- Mechanical**  AM Ultra-Lite  AM Phantom  AM Sport Comp

AM = Auto Meter TR = Thunder Road Concourse Series

### COMPLETE PACKAGE COMES WITH...

- 3-3/8" Speedometer  3-3/8" Tachometer  2-1/16" Fuel Level Gauge  
 2-1/16" Oil Pressure Gauge  2-1/16" Water Temp. Gauge  2-1/16" Volt Gauge
- Control options:** N/A
- Vent options:** Available with or without vents
- Wiring options:**  Gauge wiring harness\*  
 Turning Signal, High Beam & Parking Brake Indicator (LED) Kit\*

\*Auto Meter electric gauge packages come with a wiring harness plus water temp and oil pressure sending units. However you must purchase a speedometer sending unit to match your transmission or a GPS receiver. Mechanical gauge packages do not come with a wiring harness. Concourse packages come with oil pressure and water temp sending units only—no wiring harness or LED lights (must be purchased separately).

### Applicable Accessories:

- GPS speedometer interface module
- Electric speedometer sending unit
- Gauge wiring harness w/LED kit
- Mechanical speedometer cable adapter
- Speed sensor pigtail T56
- Power Plus 20 series wiring kit
- LED and terminal kit
- LED gauge light dimmer switch



# CLASSIC DASH APPLICATION GUIDE



## 1980-86 Ford Truck

- Panel finish:**  Matte Black  Brushed Aluminum  Carbon Fiber
- Gauge style: Electric**  AM C2  AM Carbon Fiber  AM Cobalt
- AM NV  AM Phantom  AM Phantom II
- AM Sport Comp  AM Sport Comp II  AM Ultra-Lite
- AM Ultra-Lite II  AM American Muscle  AM GT
- TR Silver  TR White  TR Black
- Mechanical**  AM Ultra-Lite  AM Phantom  AM Sport Comp

AM = Auto Meter TR = Thunder Road Concourse Series

### COMPLETE PACKAGE COMES WITH...

- 3-3/8" Speedometer  3-3/8" Tachometer  2-1/16" Fuel Level Gauge  
 2-1/16" Oil Pressure Gauge  2-1/16" Water Temp. Gauge  2-1/16" Volt Gauge

**Control options:** N/A

**Vent options:** Available with or without vents

**Wiring options:**  Gauge wiring harness\*  
 Turning Signal, High Beam & Parking Brake Indicator (LED) Kit\*

\*Auto Meter electric gauge packages come with a wiring harness plus water temp and oil pressure sending units. However you must purchase a speedometer sending unit to match your transmission or a GPS receiver. Mechanical gauge packages do not come with a wiring harness. Concourse packages come with oil pressure and water temp sending units only—no wiring harness or LED lights (must be purchased separately).

### Applicable Accessories:

- GPS speedometer interface module
- Electric speedometer sending unit
- Gauge wiring harness w/LED kit
- Mechanical speedometer cable adapter
- Speed sensor pigtail T56
- Power Plus 20 series wiring kit
- LED and terminal kit
- LED gauge light dimmer switch

# CLASSIC DASH APPLICATION GUIDE



## 1987-95 Jeep YJ

- |                              |   |   |  |
|------------------------------|---|---|--|
| <b>Panel finish:</b>         | <input type="checkbox"/> Matte Black      | <input type="checkbox"/> Brushed Aluminum   | <input type="checkbox"/> Carbon Fiber  |
| <b>Gauge style: Electric</b> | <input type="checkbox"/> AM C2            | <input type="checkbox"/> AM Carbon Fiber    | <input type="checkbox"/> AM Cobalt     |
|                              | <input type="checkbox"/> AM NV            | <input type="checkbox"/> AM Phantom         | <input type="checkbox"/> AM Phantom II |
|                              | <input type="checkbox"/> AM Sport Comp    | <input type="checkbox"/> AM Sport Comp II   | <input type="checkbox"/> AM Ultra-Lite |
|                              | <input type="checkbox"/> AM Ultra-Lite II | <input type="checkbox"/> AM American Muscle | <input type="checkbox"/> AM GT         |
|                              | <input type="checkbox"/> TR Silver        | <input type="checkbox"/> TR White           | <input type="checkbox"/> TR Black      |
| <b>Mechanical</b>            | <input type="checkbox"/> AM Ultra-Lite    | <input type="checkbox"/> AM Phantom         | <input type="checkbox"/> AM Sport Comp |

AM = Auto Meter TR = Thunder Road Concourse Series

### COMPLETE PACKAGE COMES WITH...

- 3-3/8" Speedometer
- 3-3/8" Tachometer
- 2-1/16" Fuel Level Gauge
- 2-1/16" Oil Pressure Gauge
- 2-1/16" Water Temp. Gauge
- 2-1/16" Volt Gauge

**Control options:** N/A

- Wiring options:**
- Gauge wiring harness\*
  - Turning Signal, High Beam & Parking Brake Indicator (LED) Kit\*

\*Auto Meter electric gauge packages come with a wiring harness plus water temp and oil pressure sending units. However you must purchase a speedometer sending unit to match your transmission or a GPS receiver. Mechanical gauge packages do not come with a wiring harness. Concourse packages come with oil pressure and water temp sending units only—no wiring harness or LED lights (must be purchased separately).

### Applicable Accessories:

- GPS speedometer interface module
- Electric speedometer sending unit
- Speed sensor pigtail GM 700R/4
- Gauge wiring harness w/LED kit
- Black finish glove box cover
- Brushed aluminum finish glove box cover
- Carbon fiber finish glove box cover
- Speedometer adapter for mechanical gauges
- Classic Update series wiring kit
- Power Plus 20 series wiring kit
- LS engine tach wire harness
- LS plug and play tach adapter and harness
- LS motor installation kit
- LED and terminal kit
- Tach adapter
- LED gauge light dimmer switch

# CLASSIC DASH APPLICATION GUIDE



## 1967-68 Mercury Cougar

- Panel finish:**  Matte Black  Brushed Aluminum  Carbon Fiber
- Gauge style: Electric**  AM C2  AM Carbon Fiber  AM Cobalt
- AM NV  AM Phantom  AM Phantom II
- AM Sport Comp  AM Sport Comp II  AM Ultra-Lite
- AM Ultra-Lite II  AM American Muscle  AM GT
- Mechanical**  AM Ultra-Lite  AM Phantom  AM Sport Comp

AM = Auto Meter

### COMPLETE PACKAGE COMES WITH...

- 5" Speedometer  5" Tachometer  2-1/16" Fuel Level Gauge  
 2-1/16" Oil Pressure Gauge  2-1/16" Water Temp. Gauge  2-1/16" Volt Gauge
- Control options:** N/A
- Vent options:** Available with or without vents
- Wiring options:**  Gauge wiring harness\*  
 Turning Signal, High Beam & Parking Brake Indicator (LED) Kit\*

\*Auto Meter electric gauge packages come with a wiring harness plus water temp and oil pressure sending units. However you must purchase a speedometer sending unit to match your transmission or a GPS receiver. Mechanical gauge packages do not come with a wiring harness.

### Applicable Accessories:

- GPS speedometer interface module
- Electric speedometer sending unit
- Speed sensor pigtail T56
- Gauge wiring harness w/LED kit
- Power Plus 20 series wiring kit
- Mechanical speedometer cable adapter
- LED and terminal kit
- LED gauge light dimmer switch

# CLASSIC DASH APPLICATION GUIDE



## 1969-70 Mercury Cougar

- Panel finish:**  Matte Black  Brushed Aluminum  Carbon Fiber
- Gauge style: Electric**  AM C2  AM Carbon Fiber  AM Cobalt
- AM NV  AM Phantom  AM Phantom II
- AM Sport Comp  AM Sport Comp II  AM Ultra-Lite
- AM Ultra-Lite II  AM American Muscle  AM GT
- TR Silver  TR White  TR Black
- Mechanical**  AM Ultra-Lite  AM Phantom  AM Sport Comp

AM = Auto Meter TR = Thunder Road Concourse Series

### COMPLETE PACKAGE COMES WITH...

- 3-3/8" Speedometer  3-3/8" Tachometer  2-1/16" Fuel Level Gauge  
 2-1/16" Oil Pressure Gauge  2-1/16" Water Temp. Gauge  2-1/16" Volt Gauge

**Control options:** N/A

- Wiring options:**  Gauge wiring harness\*  
 Turning Signal, High Beam & Parking Brake Indicator (LED) Kit\*

\*Auto Meter electric gauge packages come with a wiring harness plus water temp and oil pressure sending units. However you must purchase a speedometer sending unit to match your transmission or a GPS receiver. Mechanical gauge packages do not come with a wiring harness. Concourse packages come with oil pressure and water temp sending units only—no wiring harness or LED lights (must be purchased separately).

### Applicable Accessories:

- GPS speedometer interface module
- Electric speedometer sending unit
- Speed sensor pigtail T56
- Gauge wiring harness w/LED kit
- Mechanical speedometer cable adapter
- LED and terminal kit
- LED gauge light dimmer switch

# CLASSIC DASH APPLICATION GUIDE



## 1967-69 Plymouth Barracuda, 1970-71 A-Body Rallye

- Panel finish:**  Matte Black  Brushed Aluminum  Carbon Fiber
- Gauge style: Electric**  AM C2  AM Carbon Fiber  AM Cobalt
- AM NV  AM Phantom  AM Phantom II
- AM Sport Comp  AM Sport Comp II  AM Ultra-Lite
- AM Ultra-Lite II  AM American Muscle  AM GT
- Mechanical**  AM Ultra-Lite  AM Phantom  AM Sport Comp

AM = Auto Meter

### COMPLETE PACKAGE COMES WITH...

- 5" Speedometer  5" Tachometer  2-1/16" Fuel Level Gauge  
 2-1/16" Oil Pressure Gauge  2-1/16" Water Temp. Gauge  2-1/16" Volt Gauge
- Concourse Kits come with their own wiring & sending units for the water temp & oil pressure gauges.  
LED kit not included.*

**Control options:** Available with or without heater or A/C control slots

- Wiring options:**  Gauge wiring harness\*  
 Turning Signal, High Beam & Parking Brake Indicator (LED) Kit\*

*\*Auto Meter electric gauge packages come with a wiring harness plus water temp and oil pressure sending units. However you must purchase a speedometer sending unit to match your transmission or a GPS receiver.  
Mechanical gauge packages do not come with a wiring harness.*

### Applicable Accessories:

- GPS speedometer interface module
- Electric speedometer sending unit
- Gauge wiring harness w/LED kit
- Speedometer adapter for mechanical gauges
- Power Plus 20 series wiring kit
- LED and terminal kit
- LED gauge light dimmer switch

*Installation of this panel will require that you relocate your wiper switch.*

# CLASSIC DASH APPLICATION GUIDE



## 1969 Pontiac Firebird

- Panel finish:**  Matte Black  Brushed Aluminum  Carbon Fiber
- Gauge style: Electric**  AM C2  AM Carbon Fiber  AM Cobalt
- AM NV  AM Phantom  AM Phantom II
- AM Sport Comp  AM Sport Comp II  AM Ultra-Lite
- AM Ultra-Lite II  AM American Muscle  AM GT
- TR Silver  TR White  TR Black
- Mechanical**  AM Ultra-Lite  AM Phantom  AM Sport Comp

AM = Auto Meter TR = Thunder Road Concourse Series

### COMPLETE PACKAGE COMES WITH...

- 3-3/8" Speedometer  3-3/8" Tachometer  2-1/16" Fuel Level Gauge  
 2-1/16" Oil Pressure Gauge  2-1/16" Water Temp. Gauge  2-1/16" Volt Gauge

**Control options:** N/A

- Wiring options:**  Gauge wiring harness\*  
 Turning Signal, High Beam & Parking Brake Indicator (LED) Kit\*

\*Auto Meter electric gauge packages come with a wiring harness plus water temp and oil pressure sending units. However you must purchase a speedometer sending unit to match your transmission or a GPS receiver. Mechanical gauge packages do not come with a wiring harness. Concourse packages come with oil pressure and water temp sending units only—no wiring harness or LED lights (must be purchased separately).

### Applicable Accessories:

- GPS speedometer interface module
- Electric speedometer sending unit
- Gauge wiring harness w/LED kit
- Speedometer adapter for mechanical gauges
- Classic Update series wiring kit
- Power Plus 20 series wiring kit
- LS engine tach wire harness
- LS plug and play tach adapter and harness
- LS motor installation kit
- LED and terminal kit
- Tach adapter
- LED gauge light dimmer switch

# CLASSIC DASH APPLICATION GUIDE



## 1970-81 Pontiac Firebird

- Panel finish:**  Matte Black  Brushed Aluminum  Carbon Fiber
- Gauge style: Electric**  AM C2  AM Carbon Fiber  AM Cobalt
- AM NV  AM Phantom  AM Phantom II
- AM Sport Comp  AM Sport Comp II  AM Ultra-Lite
- AM Ultra-Lite II  AM American Muscle  AM GT
- TR Silver  TR White  TR Black
- Mechanical**  AM Ultra-Lite  AM Phantom  AM Sport Comp

AM = Auto Meter TR = Thunder Road Concourse Series

### COMPLETE PACKAGE COMES WITH...

- 3-3/8" Speedometer  3-3/8" Tachometer  2-1/16" Fuel Level Gauge  
 2-1/16" Oil Pressure Gauge  2-1/16" Water Temp. Gauge  2-1/16" Volt Gauge

**Control options:** N/A

- Wiring options:**  Gauge wiring harness\*  
 Turning Signal, High Beam & Parking Brake Indicator (LED) Kit\*

\*Auto Meter electric gauge packages come with a wiring harness plus water temp and oil pressure sending units. However you must purchase a speedometer sending unit to match your transmission or a GPS receiver. Mechanical gauge packages do not come with a wiring harness. Concourse packages come with oil pressure and water temp sending units only—no wiring harness or LED lights (must be purchased separately).

### Applicable Accessories:

- GPS speedometer interface module
- Electric speedometer sending unit
- Speed sensor pigtail GM 4LE60/4LE80
- Gauge wiring harness w/LED kit
- Speedometer adapter for mechanical gauges
- Classic Update series wiring kit
- LS engine tach wire harness
- LS plug and play tach adapter and harness
- LS motor installation kit
- LED and terminal kit
- Tach adapter
- LED gauge light dimmer switch

# CLASSIC DASH APPLICATION GUIDE



## 1964 Pontiac GTO / LeMans

- |                                     |   |   |  |
|-------------------------------------|---|---|--|
| <b>Panel finish:</b>                | <input type="checkbox"/> Matte Black      | <input type="checkbox"/> Brushed Aluminum   | <input type="checkbox"/> Carbon Fiber  |
| <b>Gauge style: <b>Electric</b></b> | <input type="checkbox"/> AM C2            | <input type="checkbox"/> AM Carbon Fiber    | <input type="checkbox"/> AM Cobalt     |
|                                     | <input type="checkbox"/> AM NV            | <input type="checkbox"/> AM Phantom         | <input type="checkbox"/> AM Phantom II |
|                                     | <input type="checkbox"/> AM Sport Comp    | <input type="checkbox"/> AM Sport Comp II   | <input type="checkbox"/> AM Ultra-Lite |
|                                     | <input type="checkbox"/> AM Ultra-Lite II | <input type="checkbox"/> AM American Muscle |  |
|                                     | <input type="checkbox"/> TR Silver        | <input type="checkbox"/> TR White           | <input type="checkbox"/> TR Black      |
| <b>Mechanical</b>                   | <input type="checkbox"/> AM Ultra-Lite    | <input type="checkbox"/> AM Phantom         | <input type="checkbox"/> AM Sport Comp |

AM = Auto Meter TR = Thunder Road Concourse Series

### COMPLETE PACKAGE COMES WITH...

- 3-3/8" Speedometer
- 3-3/8" Tachometer
- 2-1/16" Fuel Level Gauge
- 2-1/16" Oil Pressure Gauge
- 2-1/16" Water Temp. Gauge
- 2-1/16" Volt Gauge

**Control options:** N/A

- Wiring options:**
- Gauge wiring harness\*
  - Turning Signal, High Beam & Parking Brake Indicator (LED) Kit\*

\*Auto Meter electric gauge packages come with a wiring harness plus water temp and oil pressure sending units. However you must purchase a speedometer sending unit to match your transmission or a GPS receiver. Mechanical gauge packages do not come with a wiring harness. Concourse packages come with oil pressure and water temp sending units only—no wiring harness or LED lights (must be purchased separately).

### Applicable Accessories:

- GPS speedometer interface module
- Electric speedometer sending unit
- Gauge wiring harness w/LED kit
- Speed sensor pigtail GM 4LE60/4LE80
- Speedometer adapter for mechanical gauges
- Classic Update series wiring kit
- Power Plus 20 series wiring kit
- LS engine tach wire harness
- LS plug and play tach adapter and harness
- LS motor installation kit
- LED and terminal kit
- Tach adapter
- LED gauge light dimmer switch



# CLASSIC DASH APPLICATION GUIDE



## 1965 Pontiac GTO / LeMans

- Panel finish:**  Matte Black  Brushed Aluminum  Carbon Fiber
- Gauge style: Electric**  AM C2  AM Carbon Fiber  AM Cobalt
- AM NV  AM Phantom  AM Phantom II
- AM Sport Comp  AM Sport Comp II  AM Ultra-Lite
- AM Ultra-Lite II  AM American Muscle
- TR Silver  TR White  TR Black
- Mechanical**  AM Ultra-Lite  AM Phantom  AM Sport Comp

AM = Auto Meter TR = Thunder Road Concourse Series

### COMPLETE PACKAGE COMES WITH...

- 3-3/8" Speedometer  3-3/8" Tachometer  2-1/16" Fuel Level Gauge  
 2-1/16" Oil Pressure Gauge  2-1/16" Water Temp. Gauge  2-1/16" Volt Gauge

**Control options:** N/A

- Wiring options:**  Gauge wiring harness\*  
 Turning Signal, High Beam & Parking Brake Indicator (LED) Kit\*

\*Auto Meter electric gauge packages come with a wiring harness plus water temp and oil pressure sending units. However you must purchase a speedometer sending unit to match your transmission or a GPS receiver. Mechanical gauge packages do not come with a wiring harness. Concourse packages come with oil pressure and water temp sending units only—no wiring harness or LED lights (must be purchased separately).

### Applicable Accessories:

- GPS speedometer interface module
- Electric speedometer sending unit
- Gauge wiring harness w/LED kit
- Speed sensor pigtail GM 4LE60/4LE80
- Speedometer adapter for mechanical gauges
- Classic Update series wiring kit
- Power Plus 20 series wiring kit
- LS engine tach wire harness
- LS plug and play tach adapter and harness
- LS motor installation kit
- LED and terminal kit
- Tach adapter
- LED gauge light dimmer switch

# CLASSIC DASH APPLICATION GUIDE



## 1966 Pontiac GTO / LeMans

- Panel finish:**  Matte Black  Brushed Aluminum  Carbon Fiber
- Gauge style: Electric**  AM C2  AM Carbon Fiber  AM Cobalt
- AM NV  AM Phantom  AM Phantom II
- AM Sport Comp  AM Sport Comp II  AM Ultra-Lite
- AM Ultra-Lite II  AM American Muscle  AM GT
- TR Silver  TR White  TR Black
- Mechanical**  AM Ultra-Lite  AM Phantom  AM Sport Comp

AM = Auto Meter TR = Thunder Road Concourse Series

### COMPLETE PACKAGE COMES WITH...

- 3-3/8" Speedometer  3-3/8" Tachometer  2-1/16" Fuel Level Gauge  
 2-1/16" Oil Pressure Gauge  2-1/16" Water Temp. Gauge  2-1/16" Volt Gauge

**Control options:** N/A

- Wiring options:**  Gauge wiring harness\*  
 Turning Signal, High Beam & Parking Brake Indicator (LED) Kit\*

\*Auto Meter electric gauge packages come with a wiring harness plus water temp and oil pressure sending units. However you must purchase a speedometer sending unit to match your transmission or a GPS receiver. Mechanical gauge packages do not come with a wiring harness. Concourse packages come with oil pressure and water temp sending units only—no wiring harness or LED lights (must be purchased separately).

### Applicable Accessories:

- GPS speedometer interface module
- Electric speedometer sending unit
- Gauge wiring harness w/LED kit
- Speedometer adapter for mechanical gauges
- Classic Update series wiring kit
- Black finish glove box cover
- Brushed aluminum finish glove box cover
- Carbon fiber finish glove box cover
- LS plug and play tach adapter and harness
- LS motor installation kit
- LED and terminal kit
- Tach adapter
- LED gauge light dimmer switch

# CLASSIC DASH APPLICATION GUIDE



## 1967 Pontiac GTO / LeMans

- |                                     |   |   |  |
|-------------------------------------|---|---|--|
| <b>Panel finish:</b>                | <input type="checkbox"/> Matte Black      | <input type="checkbox"/> Brushed Aluminum   | <input type="checkbox"/> Carbon Fiber  |
| <b>Gauge style: <b>Electric</b></b> | <input type="checkbox"/> AM C2            | <input type="checkbox"/> AM Carbon Fiber    | <input type="checkbox"/> AM Cobalt     |
|                                     | <input type="checkbox"/> AM NV            | <input type="checkbox"/> AM Phantom         | <input type="checkbox"/> AM Phantom II |
|                                     | <input type="checkbox"/> AM Sport Comp    | <input type="checkbox"/> AM Sport Comp II   | <input type="checkbox"/> AM Ultra-Lite |
|                                     | <input type="checkbox"/> AM Ultra-Lite II | <input type="checkbox"/> AM American Muscle | <input type="checkbox"/> AM GT         |
|                                     | <input type="checkbox"/> TR Silver        | <input type="checkbox"/> TR White           | <input type="checkbox"/> TR Black      |
| <b>Mechanical</b>                   | <input type="checkbox"/> AM Ultra-Lite    | <input type="checkbox"/> AM Phantom         | <input type="checkbox"/> AM Sport Comp |

AM = Auto Meter TR = Thunder Road Concourse Series

### COMPLETE PACKAGE COMES WITH...

- 3-3/8" Speedometer
  - 3-3/8" Tachometer
  - 2-1/16" Fuel Level Gauge
  - 2-1/16" Oil Pressure Gauge
  - 2-1/16" Water Temp. Gauge
  - 2-1/16" Volt Gauge
- Control options:** N/A
- Wiring options:**  Gauge wiring harness\*  
 Turning Signal, High Beam & Parking Brake Indicator (LED) Kit\*

\*Auto Meter electric gauge packages come with a wiring harness plus water temp and oil pressure sending units. However you must purchase a speedometer sending unit to match your transmission or a GPS receiver. Mechanical gauge packages do not come with a wiring harness. Concourse packages come with oil pressure and water temp sending units only—no wiring harness or LED lights (must be purchased separately).

### Applicable Accessories:

- GPS speedometer interface module
- Electric speedometer sending unit
- Gauge wiring harness w/LED kit
- Speed sensor pigtail GM 4LE60/4LE80
- Classic Update series wiring kit
- Black finish glove box cover
- Brushed aluminum finish glove box cover
- Carbon fiber finish glove box cover
- LS plug and play tach adapter and harness
- LS motor installation kit
- LED and terminal kit
- Tach adapter
- LED gauge light dimmer switch

# CLASSIC DASH APPLICATION GUIDE



## 1968 Pontiac GTO / LeMans

- Panel finish:**  Matte Black  Brushed Aluminum  Carbon Fiber
- Gauge style: Electric**  AM C2  AM Carbon Fiber  AM Cobalt
- AM NV  AM Phantom  AM Phantom II
- AM Sport Comp  AM Sport Comp II  AM Ultra-Lite
- AM Ultra-Lite II  AM American Muscle  AM GT
- TR Silver  TR White  TR Black
- Mechanical**  AM Ultra-Lite  AM Phantom  AM Sport Comp

AM = Auto Meter TR = Thunder Road Concourse Series

### COMPLETE PACKAGE COMES WITH...

- 3-3/8" Speedometer  3-3/8" Tachometer  2-1/16" Fuel Level Gauge
- 2-1/16" Oil Pressure Gauge  2-1/16" Water Temp. Gauge  2-1/16" Volt Gauge
- Control options:** N/A
- Wiring options:**  Gauge wiring harness\*
- Turning Signal, High Beam & Parking Brake Indicator (LED) Kit\*

\*Auto Meter electric gauge packages come with a wiring harness plus water temp and oil pressure sending units. However you must purchase a speedometer sending unit to match your transmission or a GPS receiver. Mechanical gauge packages do not come with a wiring harness. Concourse packages come with oil pressure and water temp sending units only—no wiring harness or LED lights (must be purchased separately).

### Applicable Accessories:

- GPS speedometer interface module
- Electric speedometer sending unit
- Gauge wiring harness w/LED kit
- Speedometer adapter for mechanical gauges
- Power Plus 20 series wiring kit
- Black finish glove box cover
- Brushed aluminum glove box cover
- Carbon fiber glove box cover
- LS plug and play tach adapter and harness
- LS motor installation kit
- LED and terminal kit
- LED gauge light dimmer switch

# CLASSIC DASH APPLICATION GUIDE



## 1970-72 Pontiac GTO / LeMans

- Panel finish:**  Matte Black  Brushed Aluminum  Carbon Fiber
- Gauge style: Electric**  AM C2  AM Carbon Fiber  AM Cobalt
- AM NV  AM Phantom  AM Phantom II
- AM Sport Comp  AM Sport Comp II  AM Ultra-Lite
- AM Ultra-Lite II  AM American Muscle  AM GT
- TR Silver  TR White  TR Black
- Mechanical**  AM Ultra-Lite  AM Phantom  AM Sport Comp

AM = Auto Meter TR = Thunder Road Concourse Series

### COMPLETE PACKAGE COMES WITH...

- 3-3/8" Speedometer  3-3/8" Tachometer  2-1/16" Fuel Level Gauge  
 2-1/16" Oil Pressure Gauge  2-1/16" Water Temp. Gauge  2-1/16" Volt Gauge

**Control options:** N/A

- Wiring options:**  Gauge wiring harness\*  
 Turning Signal, High Beam & Parking Brake Indicator (LED) Kit\*

\*Auto Meter electric gauge packages come with a wiring harness plus water temp and oil pressure sending units. However you must purchase a speedometer sending unit to match your transmission or a GPS receiver. Mechanical gauge packages do not come with a wiring harness. Concourse packages come with oil pressure and water temp sending units only—no wiring harness or LED lights (must be purchased separately).

### Applicable Accessories:

- GPS speedometer interface module
- Electric speedometer sending unit
- Gauge wiring harness w/LED kit
- Speedometer adapter for mechanical gauges
- Speed sensor pigtail GM 4LE60/4LE80
- Power Plus 20 series wiring kit
- LS engine tach wire harness
- LS plug and play tach adapter and harness
- LS motor installation kit
- LED and terminal kit
- Tach adapter
- LED gauge light dimmer switch

# AVAILABLE GAUGE STYLES

## AUTO METER ELECTRICAL



American Muscle



C2



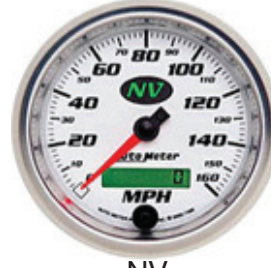
Carbon Fiber



Cobalt



GT Series



NV



Phantom II



Phantom



Sport Comp II



Sport Comp Electric



Ultra Lite II



Ultra Lite

## AUTO METER MECHANICAL



Phantom Mechanical



Sport Comp

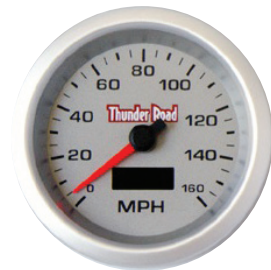


Ultra Lite Mechanical

## THUNDER ROAD ELECTRICAL



Concourse Black



Concourse Silver



Concourse White

# Thunder Road Gauges



- FEATURES:**
- 160 MPH Speedo
  - 10,000 RPM Tachometer
  - Programmable Fuel Gauge
  - 0-100 PSI Oil Pressure Gauge
  - 100-260°F Water Temperature Gauge
  - 8-18 Volt Voltmeter Gauge
  - White or Amber LED Lighting
  - Peak Recall and Programmable Warning Functions

- CONCOURS FEATURES:**
- 160 MPH Speedo
  - 10,000 RPM Tachometer
  - Fuel Gauge to match factory Sending Unit
  - 0-80 PSI Oil Pressure Gauge
  - 120-280°F Water Temperature Gauge
  - 8-18 Volt Voltmeter Gauge
  - Dazzling White LED Lighting

# Pontiac



# Mopar



# Ford



# Ford Trucks



# Classic Thunder Road Dash

## Classic Thunder Road panels:

- Lightweight, exceedingly rigid, and impregnated with a UV inhibitor that protects panels from sun damage.
  - Available in carbon fiber, brushed aluminum, and classic black finishes, with or without gauges.
  - Complete kits include your choice of Auto Meter® or Thunder Road gauges—choose from several different styles!
- Electronic gauge kits include wiring harness from gauges to factory loom. Water and oil sending units included. Assembly required with all complete kits.

# Classic Thunder Road Dash

Molded ABS instrument panels that accept upgraded gauges and fit like the original!



Available in carbon fiber



brushed aluminum



or classic black

Classic Thunder Road panels available from:

Chevy, Ford, Mopar & more—car and truck parts



# Chevy Camaro

# Chevy Chevelle

# Chevy Chevelle

# Chevy Nova

# Chevy & GMC Trucks

# Mercury



'67-'68 Models  
fits '68-'69 Camaro & '68-'74 Nova



'69 Models



'70-'78 Models



'79-'81 Models



'82-'89 Models



'90-'92 Models



'64-'65 Models



'66-'67 Models (three-piece)



'68 Models



'69 Models

# Chevy Corvette



'63-'67 Corvette



'70-'72 Models (non SS)



'70-'72 SS Models



'78-'87 Malibu, El Camino, Monte Carlo Models

# Chevy Tri-Fives



'55-'56 Models



'57 Models



'62-'65 Models



'62-'65 Models



'66-'67 Models



'68 Models



'69-'76 Models



'77-'79 Models



'60-'63 Models (will not fit GMC)



'64-'66 Models (will not fit GMC)



'67-'72 Models



'67-'72 Models - Glove Box Cover



'73-'87 Models



'82-86 S-10 Models



'82-'86 S-10 Models - Glove Box Cover



'88-'94 Models



'67 Cougar



'69 Cougar



1965 Nova



1960 Chevy Truck