



The Roanoke

Pontoon Boat

O W N E R ' S M A N U A L



INTRODUCTION

Congratulations on your purchase of a Classic Accessories pontoon boat.

This manual has been compiled to help you assemble your boat correctly and operate it safely. It contains specific details of the boat, including its parts and equipment, and information on its safe operation, proper care, maintenance and repair. Please read it carefully, and familiarize yourself with your boat before using it.

If this is your first pontoon boat, or if you are changing to this type of boat for the first time, for your own comfort and safety, please ensure that you obtain handling and operating experience before serious use. Doing so will assure many years of trouble free use and enjoyment.

PLEASE KEEP THESE INSTRUCTIONS IN A SECURE PLACE, AND TRANSFER THEM TO THE NEW OWNER IF YOU SELL THE CRAFT.

MODIFICATIONS

Because of possible interference with the factory design and integrity of the boat, owner modifications to the boat, any of its parts, equipment or systems are not recommended.

Classic does not recommend that owners modify the boat or any of its parts, equipment or systems. Such modifications could compromise the design and integrity of the boat, prevent safe operation, and void warranty coverage.

PRODUCT SPECIFICATIONS & CAPACITY

BOAT SPECIFICATIONS

Product Name: ROANOKE Pontoon Boat

Dimensions: 96 inch L x 55 inch W x 27.5 inch H (top of the seat)
244 cm L x 140 cm W x 70 cm H (top of the seat)

Dry Weight: 39 lbs (18 kg)

Maximum Persons Capacity: 1 person up to 275 lbs (125 kg)

Maximum Person & Gear Capacity: 350 lbs (159 kg)

Recommended Inflation Pressure: 2.5 psi (0.17 BAR)

BOAT CAPACITY

The person/load capacity is partly dependent on proper seating and load distribution. Make sure that your load is distributed evenly and the seating position is such that, when afloat, the boat rides level in the water.

⚠ WARNING - DO NOT EXCEED THE MAXIMUM CAPACITY OF THIS BOAT UNDER ANY CIRCUMSTANCES.



⚠ WARNING - THIS BOAT IS NOT RATED FOR PROPULSION BY A MOTOR.

U.S. COAST GUARD MAXIMUM CAPACITIES


1 PERSON OR **275** LBS
350 LBS PERSONS, GEAR
PRESSURE = 2.5 psi (main chambers)

**THIS BOAT IS NOT RATED FOR
PROPULSION BY A MOTOR**

MANUFACTURER: CLASSIC ACCESSORIES, INC.
KENT, WA, USA 98032

1  +  = **158 kg**
 •  = **0.17 bar** (main chambers)

SAFETY INFORMATION AND SYMBOLS

 The symbol to the left is the Safety Alert symbol. It is used to alert you to potential personal injury hazards. Obey all safety messages that follow this symbol to avoid possible injury or death.

DANGER

Indicates a potentially hazardous situation which, if not avoided, will result in death or serious injury.

WARNING

Indicates a potentially hazardous situation which, if not avoided, could result in death or serious injury.

CAUTION

Indicates a potentially hazardous situation which, if not avoided, may result in minor or moderate injury.

CAUTION

Indicates a potentially hazardous situation which, if not avoided, may result in property damage.

This manual lists certain recommended practices and provides some basic precautions. However, this list of precautions is not all-inclusive. Users must follow all applicable laws, rules, and regulations and should exercise appropriate caution in the safe operation of this pontoon boat.

REMEMBER - always use common sense when using your pontoon boat.

RESPONSIBILITIES OF THE OPERATOR(S)

▲ IMPORTANT SAFETY AND CARE INFORMATION

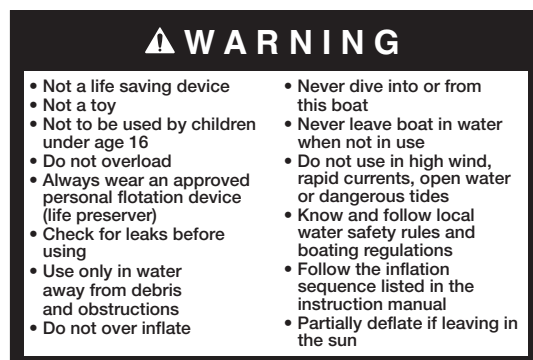
SAFETY

- Read this owner's manual carefully before using your pontoon boat.
- This product is not to be used by children under 16 years of age or by any child without adult supervision. This pontoon boat is not a toy. Check the laws in your state.
- Not for use by children or as pool toy.
- This is not a life saving device.
- You **MUST** wear an approved personal flotation device (PFD).
- All safety equipment & PFDs must properly fit the user, be in good condition and suitable for your body weight.
- Know and follow all local water safety rules and boating regulations.
- Do not exceed 350 lbs (159 kg) total cargo weight. (The weight of you and all of your gear should not exceed 350 lbs (159 kg).
- Inspect your pontoon boat for wear or damage before and after each use.
- Class 1 river rating: not for use in rough water, white water, rapids or open ocean.
- Always use a Coast Guard approved personal flotation device.
- Never float alone.
- Never use this boat in bad weather.
- Keep sharp objects (knives, fish hooks, etc.) away from the pontoons.
- Do not use under the influence of drugs or alcohol.
- Do not tow this pontoon boat.
- Use only in water free from debris and obstructions.
- Do not use in high wind, rapid currents, open water or dangerous tides.
- Seek shelter from water if there is threat of lightning.
- Do not stand on this product while in use.
- Never jump into or dive from this boat.
- Inflate with cold air only.

- Do not over inflate or use CO₂ or a high pressure air compressor to inflate.
- Follow the inflation sequence listed in this instruction manual.
- Recommended working pressure is 2.5 psi (0.17 bar). **DO NOT EXCEED 2.5 PSI.**
- Check for leaks before using.
- Remember that air pressure changes with temperature and elevation so always check your air pressure before use.
- Partially deflate if leaving boat in direct sunlight or within a vehicle in sunlight.
- Check all fasteners, screws and wing nuts before each use.

CARE

- Clean with warm water and a mild detergent.
- To avoid mildew be sure your boat is dry before storing it.
- Deflate pontoons slightly between uses to extend the life of your boat.



CERTIFICATE OF ORIGIN AND HIN NUMBERS

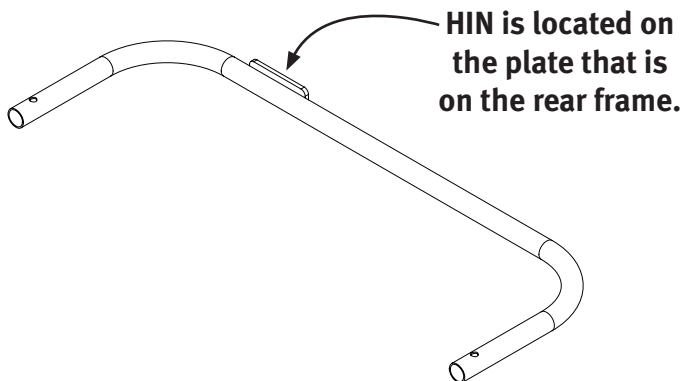
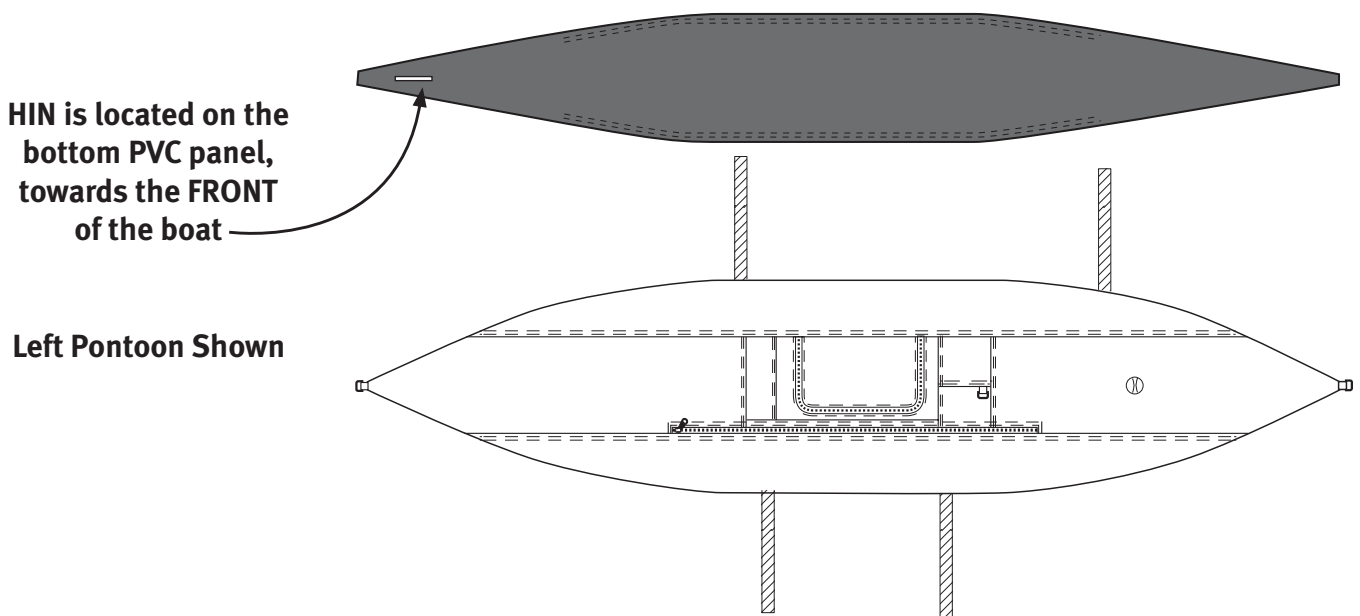
CERTIFICATE OF ORIGIN

A separate Certificate of Origin form has been included with this pontoon boat. If your state requires registration of your pontoon boat, you will need to include the HIN number on the form. Check your state's boating regulations to see if your pontoon boat requires registration.

LOCATING THE HIN (HULL IDENTIFICATION NUMBER)

The HIN Number or "Hull Identification Number" is required for every pontoon boat. Each pontoon boat has a unique number assigned to it, specific to that pontoon boat only. The assigned number appears on three locations of the pontoon boat (two locations on the pontoon boat and one location on the frame).

The HIN is located on both pontoon boat skins. they are located to the rear, towards the inside of the boat.



XXQ00001L708

Example of HIN number

INFLATION

PROPER INFLATION

During final inflation, inflate until most of the wrinkles in the fabric are gone and it feels firm to the touch, but DO NOT exceed 2.5 psi (0.17 bar) in the main air chambers.

CAUTION - DO NOT OVER INFLATE YOUR PONTOON BOAT

Water temperature and weather affect the air pressure in the boat. In cold weather your pontoon boat will lose some pressure because the air will contract. If this occurs, you may want to add more air.

In hot weather, the air will expand. You must let out some air to prevent the pontoons from failing from over pressure. Avoid exposing your pontoon boat to extreme temperatures (hot or cold).

CAUTION

On warm sunny days, keep the pontoon boat either in water or in shade (if kept inflated on land). This will decrease the risk of overexpansion of the pontoon chambers posed by rising temperatures, which can result in seam tears, delamination and pinholes.


Avoid asphalt, sand, pebbles or concrete in direct sunlight as they radiate high ground heat.

Also understand that changes in altitude will cause the air in the bladders to expand or contract. If traveling to higher elevation with the pontoon boat inflated, frequently check the pressure in the pontoons to avoid over pressure. If traveling to lower elevation you may have to add more air to maintain proper pressure in the pontoons.

 WARNING - ALWAYS CHECK THE AIR PRESSURE IN THE PONTOONS BEFORE AND DURING EACH USE.

ASSEMBLY

It is important to follow these instructions to successfully and safely assemble your Classic Accessories Pontoon Boat.

Please pay particular attention to the bold faced instructions and any information which has this  symbol next to it.

ROANOKE PONTOON BOAT OWNER'S MANUAL

PARTS LIST

Before you begin, please unpack the carton and check that you have all your parts.

IMPORTANT: All small parts are located inside the center pocket of one of the pontoon storage bags marked by a tag for easy identification.

Tools Needed: Rubber mallet


Small Parts (Small parts bag located in pontoon pocket)

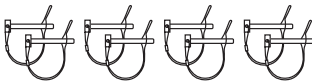
- 2 Pontoon bladder patches
(Two self-adhesive patches)
PTBPATCHKIT
- 

- 1 Inflation adapter
PTBADAPTOR
- 

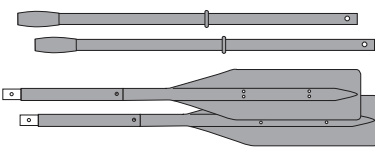
- 1 Inflation valve wrench
PTBWRENCH
- 

- 2 Oar locks
PRT-30-070
- 2 Oar lock cotter pins
- 

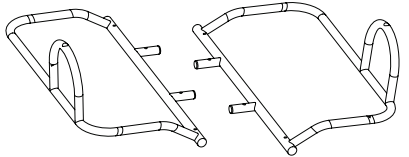
- 2 Valves (installed)
PTBVALVE (Valve and Cap)
PTBVCAP (Cap only)
- 

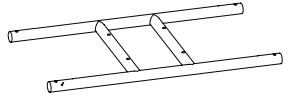
- 8 Frame clevis pins
PRT-30-071
- 

Oar Parts

- 2 Oars
(4 pieces or 2 per oar)
PRT-30-067
- 


Metal Frame Parts


- 2 Pontoon frames
(left and right)
PRT-30-121 Left
PRT-30-122 Right
- 

- 1 Seat frame
PRT-30-141
- 

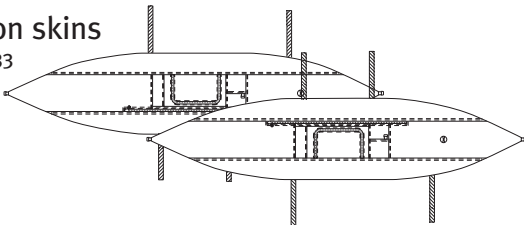
- 1 Rear frame
PRT-30-231
- 

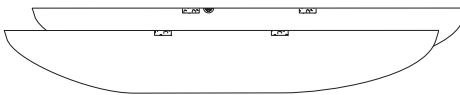
- 2 Foot pegs
PRT-30-054 Left
PRT-30-055 Right
- 

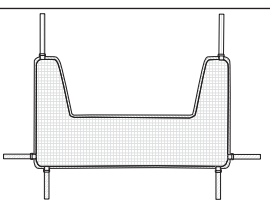
- 1 Seat
(folding seat with screws, washers, lock washers and wingnuts installed)
PRT-30-232
- 

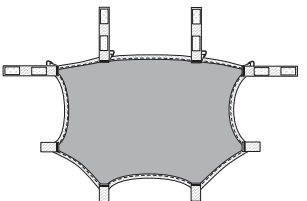
- 2 Plastic bushings (installed on frame)
PRT-30-195
- 

Soft Parts

- 2 Pontoon skins
PRT-30-233
- 

- 2 Bladders
(installed within pontoons)
PRT-30-004 Single Bladder
- 

- 1 Apron
PRT-30-229
- 

- 1 Rear cargo deck
PRT-30-230
- 

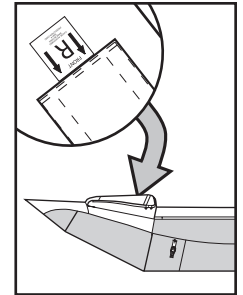
ASSEMBLY AND USE

1. Confirm that all the parts are present.

(See the parts list on page 9).

2. Identify the right and left pontoons.

You can identify the right and left pontoons by the “R” (right) and “L” (left) labels sewn on the inside of the pocket on top of each.



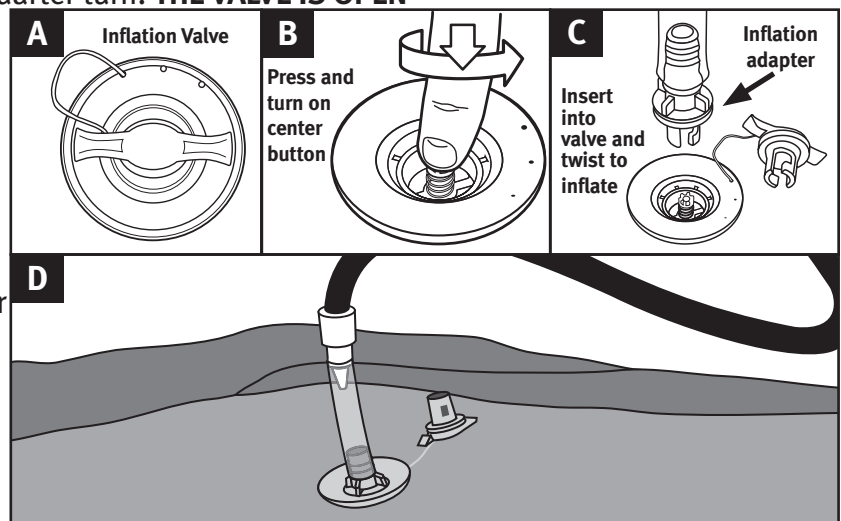
3. Partially inflate the air bladders.

The valve is located on the top of the pontoons in front of the main pocket.

The valve has a center button that opens and closes the valve by simply pushing down, and turning a quarter turn. **THE VALVE IS OPEN**

WHEN THE CENTER BUTTON IS DOWN, AND CLOSED WHEN IT IS UP. BEFORE INFLATING, MAKE SURE THE VALVE IS IN THE CLOSED POSITION.

Unscrew the valve cap, make sure the valve is closed and insert the inflation adapter into the valve and twist to secure. Inflate using a foot pump or air compressor with a cone-type nozzle fitting.



⚠ Inflate the pontoon to about 3/4 full. Do not inflate beyond 3/4 full because it will make the next step very difficult—attaching the pontoons to the frame.

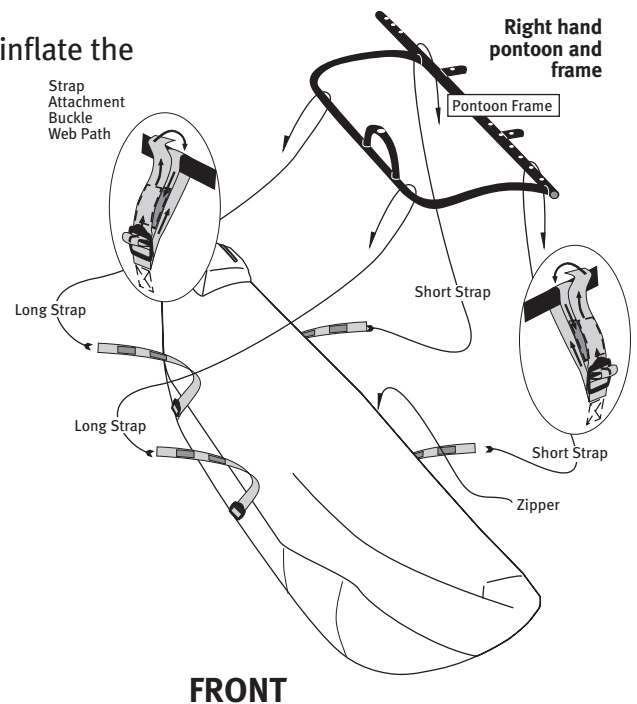
Repeat this step with the other pontoon. You will fully inflate the pontoons in step 5

4. Attach the pontoons to the frames.

Each pontoon attaches to a metal pontoon frame with four webbing attachment straps.

Locate the left and right pontoon frames. On the front of each pontoon frame (where the front of the boat will be) there is a “L” (left) or “R” (right) label indicating left or right.

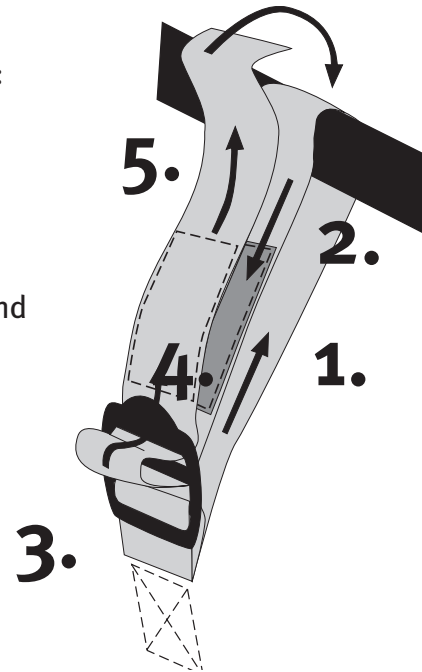
Place a right pontoon frame on top of the right pontoon as shown. There is a “L” (left) or “R” (right) label inside the pocket of each pontoon). The longest straight tube of each frame should be on the same side of the pontoon as the pontoon zipper.



FRONT

Now attach the two inside and two outside webbing straps on the pontoon to the pontoon frame. Thread the straps as follows:

1. Through the frame...
2. Back to the buckle...
3. Through the buckle threading path...
4. Match the rip-and-grip to each other.
5. Fold the remaining webbing - trapping it between the pontoon and webbing. Repeat for the remaining three straps.



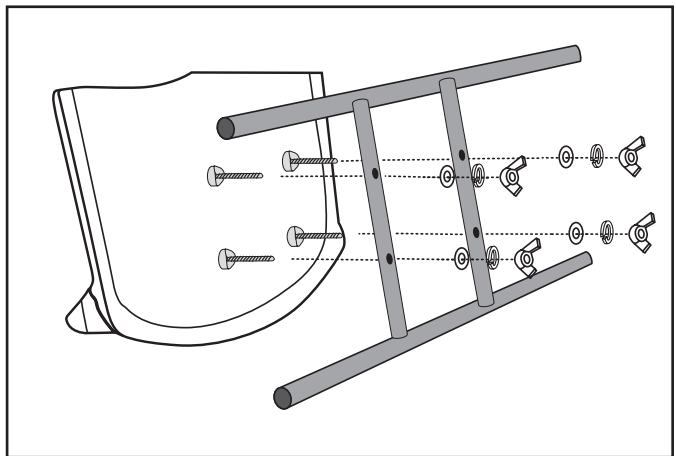
5. Inflate the pontoon completely.

▲ Inflate to approximately 2.5 psi (0.17 BAR).
Inflate until firm but not hard. DO NOT over inflate.

Repeat the procedure with the left pontoon.

6. Attach the seat to the seat frame.

Locate the four 2 inch (5 cm) screws coming out of the bottom of the seat. Unscrew the wing nuts and remove the washers and lock washers. Place the seat with screws facing downwards into the four holes on the seat frame. Attach the washers, lock washers and wing nuts onto the screws and tighten to hold the seat in place.



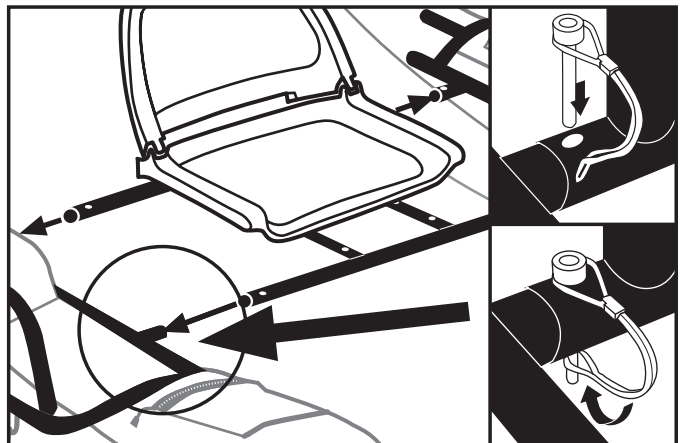
7. Attach the seat frame to the pontoon frames.

Insert the seat platform tubes onto the pontoon frame posts with the seat facing the front. The front of the pontoon frames are the ends labeled “L” (left) and “R” (right). (You may need to LIGHTLY tap the frames with a rubber mallet to fit).

Align the holes and secure with four clevis pins.

You MUST lock the security retainers on all four clevis pins to insure that the frame stays together.

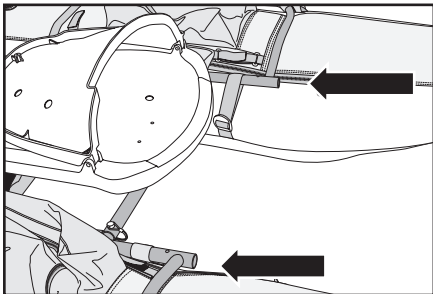
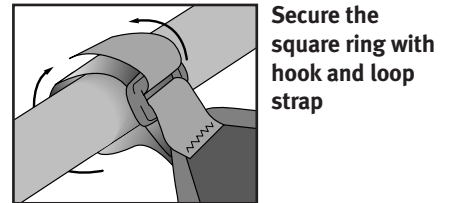
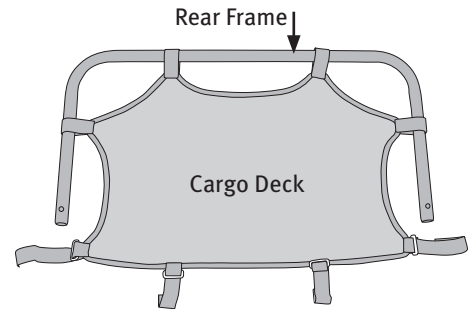
▲ Insert clevis pins on the frame side not in between bladder and frame to avoid abrasion of pontoon.



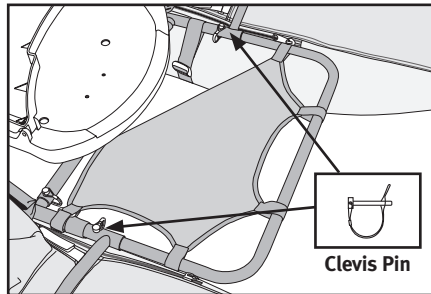
8. Rear Frame and Cargo Deck Assembly & Installation.

Attach the cargo deck to the rear frame by threading the frame through the webbing loops of the cargo deck. Insert the rear cargo deck assembly into the pontoon side frames. Insert a short clevis frame pin on either side of the frame from the top down into the holes where the cargo deck frame slides into the pontoon frames.

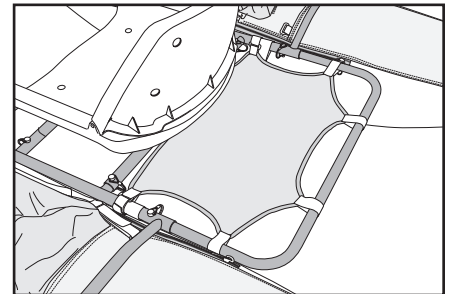
Now attach remaining webbing straps over the frame, through the square ring and secure with the hook and loop straps. Some adjustment may be necessary to center the fabric deck on the frame.



8a. Insert rear frame into seat frame.



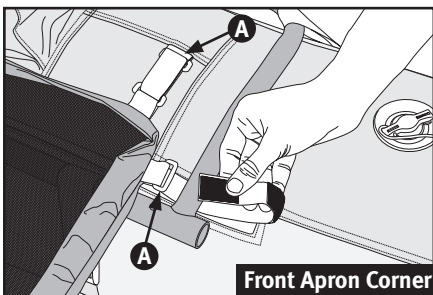
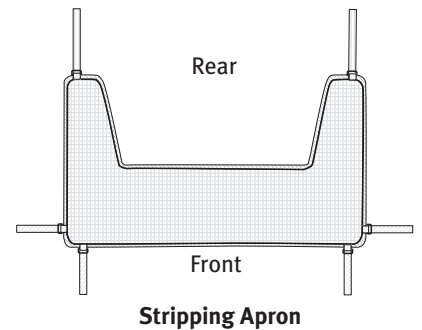
8b. Attach cargo deck to the frame using all square rings with hook and loop straps



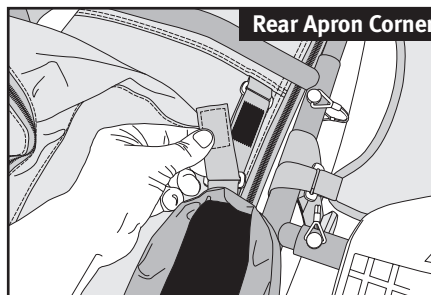
8c. Cargo deck installed

9. Attach the stripping apron.

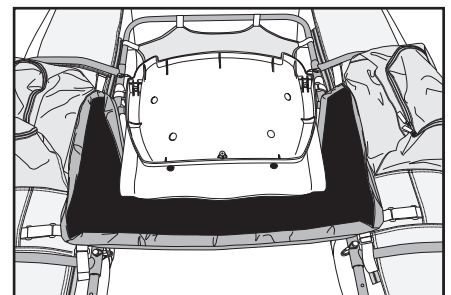
Orient the stripping apron in front of and under the seat as shown. Attach the pair of straps on the front corners of the apron to the pontoon boat. Some adjustment may be necessary to center the fabric deck on the frame. Finish by attaching the two rear corners of the apron to the main frame.



9a. Secure stripping apron to the front two corners (Figure A)



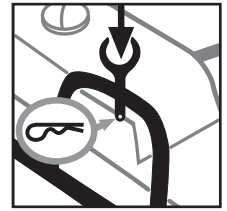
9b. Secure stripping apron to each rear pontoon



9c. Stripping apron installed

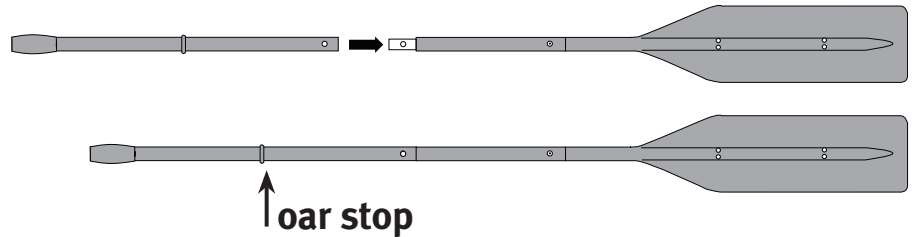
10. Insert the oar locks.

Insert an oar lock into the top of both oar lock brackets on the pontoon frames. Secure each oar lock with an oar lock cotter pin.



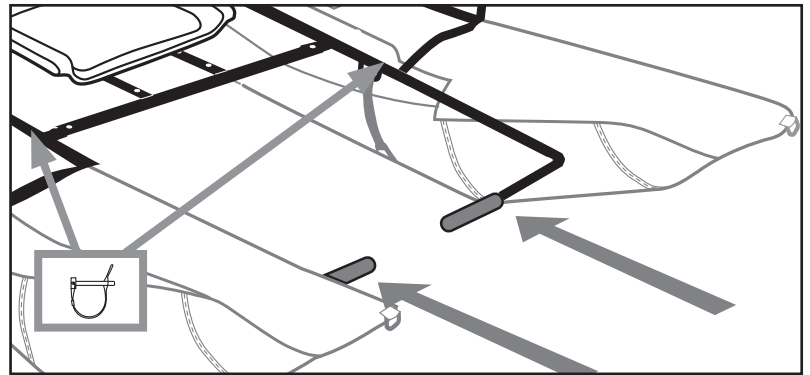
11. Assemble the oars.

Your oars come in two sections. To assemble, slide the handle section into the paddle section, matching up the spring loaded pins with the holes.



12. Insert the foot pegs.

Insert the foot pegs into the pontoon frame as shown. Sit in the boat on dry land and adjust the foot pegs to your leg length and preference. Align the holes and secure with two clevis pins.



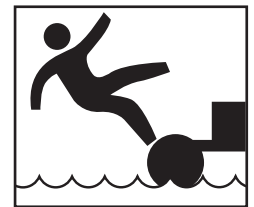
13. The bladder repair kit.

Included with your boat are self-adhesive tube patches to repair any tears or holes in the pontoon bladders. We recommend storing these in one of the pockets to keep it available for repairs (see also page 14).

⚠ WARNING - Do not place heavy cargo in the cargo deck if it makes your boat unlevel.

⚠ WARNING - If you need to adjust the foot pegs bring the boat back to shore and make the needed adjustments.

⚠ WARNING - DO NOT STAND UP IN YOUR BOAT WHILE ON THE WATER. YOU COULD LOOSE YOUR BALANCE AND FALL OVERBOARD.



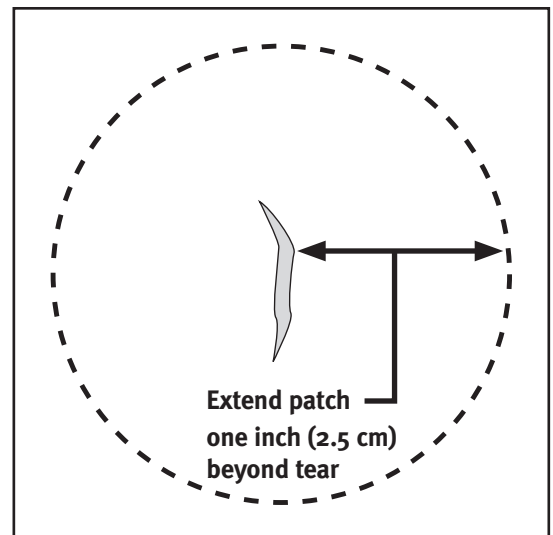
Practice going forward and backward a bit to get comfortable. Then catch some fish and enjoy your boat!

REPAIR & TROUBLESHOOTING

Repairing Tears and Holes in Pontoon Bladders

If your pontoon bladder becomes torn or punctured, use the enclosed patches to fix it. It may be necessary to take the pontoon bladder out of the pontoon skin. Look in the Troubleshooting section on the next page for this procedure. To fix a hole or tear, follow the steps listed below.

1. For best results, it is important to apply patch to a clean, dry surface and that the surface temperature is 50° F (10° C) or warmer.
2. Use an alcohol prep pad to clean the surface to be repaired. If you do not have an alcohol prep pad, use a 50/50 mixture of isopropyl alcohol and water. After cleaning, allow the surface to dry completely.
3. Cut a patch to the correct size with scissors. Allow for the patch size to extend one inch (2.5 cm) beyond all edges of the tear. Cut the patch with rounded corners. This will make it difficult for the corners to peel up after it is attached.
4. Peel back 1/8 inch - 1/4 inch (0.3 cm - 0.6 cm) of paper backing and position and anchor the exposed patch edge, allowing the patch to extend 1 inch (2.5 cm) beyond all edges of the tear.
5. Slowly peel the paper backing while carefully applying the patch over the tear. Take care to avoid air bubbles.
6. Rub the patch firmly for proper adhesion and allow to cure for 4 hours before use.



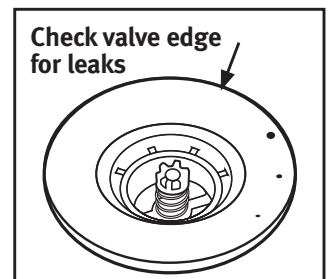
REPAIR & TROUBLESHOOTING

If your boat appears to be losing air, it might not be because of a leak. Changes in air temperature, elevation and use on cold water (which can cool the air inside the pontoon bladders) can all have an effect on the air inside the bladders. If none of these factors have changed, you may need to look for a leak. Follow the steps listed below.

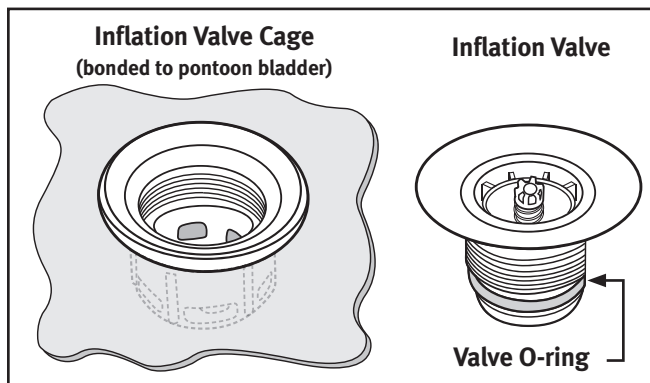
1. Start by giving the pontoon skins a visual inspection.
Is the pontoon skin ripped or torn? Are there any major scuff marks?
If so, it might be an indication of a bladder tear or leak.
2. Check if you can hear air escaping the bladder in any suspected areas. You can apply soapy water to any suspected areas as well. A leak will produce bubbles. If you find a hole, fix it using the methods listed earlier in these instructions.

If you don't find a leak using these methods, check the inflation valves:

3. Give them a visual inspection, making sure the valve is closing properly and the valve cap closes securely.
4. Check if you can hear air escaping. You may also use soapy water around the valve. If you find that a valve is leaking air around its edge, the valve may be loose.

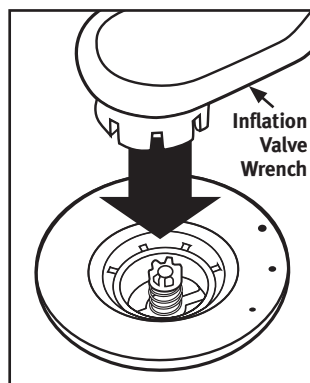


Checking For A Leaking Valve



The inflation valve consists of a two-part assembly. There is the inflation valve itself and the inflation valve cage. The inflation valve cage protects the inflation valve from damage and is bonded into the pontoon bladder.

To tighten a loose valve insert the Inflation Valve Wrench into the valve and twist clockwise. It may be necessary to grasp the inflation valve cage (which is inside the pontoon bladder) to get enough purchase to



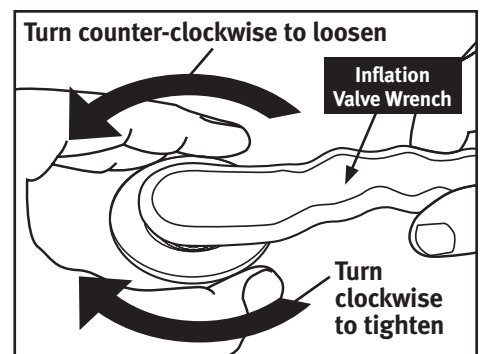
twist the valve. Be careful not to tear or rip the bladder skin.

If the valve is difficult to turn, remove the valve completely and add a small amount of silicon grease to the valve O-ring and reassemble.

If the valve is not leaking around its edge, you may have a defective valve.

Please visit our website at: www.classicaccessories.com to order a new valve.

If you must remove the pontoon bladder from the pontoon skin to make a repair, you must completely unscrew the inflation valve from the inflation valve cage. Make sure to align the valves in the bladder with the valve openings in the skin. Since the pontoon skin is captive in between the inflation valve cage and the inflation valve, care must be taken not to tear, rip or stress either the bladder or the skin by over-tightening the valve.



CARE & STORAGE

TRANSPORTING YOUR PONTOON BOAT

The boat can be transported partially or fully assembled and or inflated. Due to size constraints, many customers will keep their frame fully intact and simply inflate and attach their pontoons once they reach their destination. Various methods such as a pickup truck bed, trailer, or roof rack can be used to transport your boat. If you are carrying a partially or fully assembled and or inflated boat, please consult with your vehicle, trailer, or roof rack Manufacturer.

CARE FOR YOUR BOAT

The pontoon boat can be cleaned with soap and water then rinsed. Use a soft rag for hard to clean areas.

SEASONAL STORAGE OF YOUR BOAT

Remove pontoons from the frame, empty pockets of any sharp objects that may puncture the skin. Deflate completely and fold for storage. Store pontoons away from sharp objects, heat or abrasive wear. Dismantle frame and boat parts and store in box.