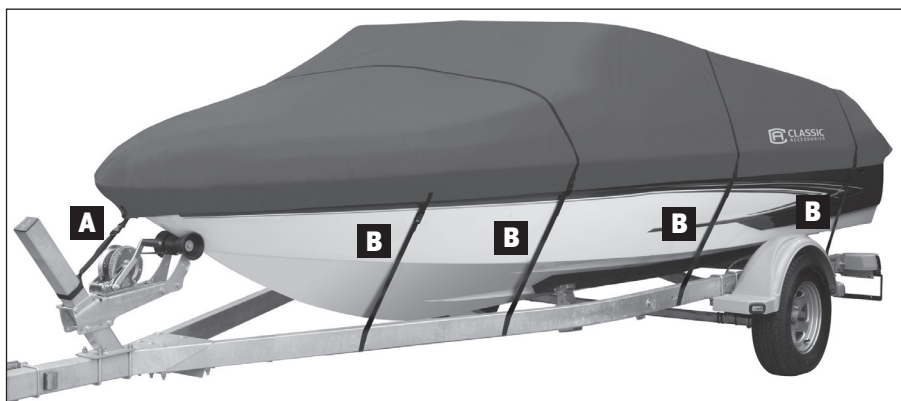


Instructions: StormPro™ Boat Cover

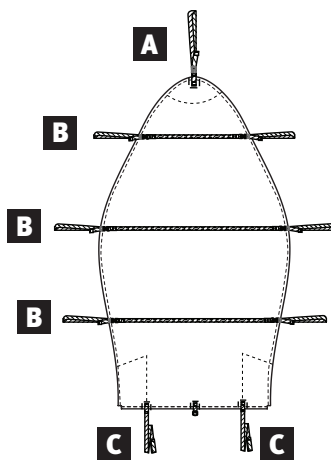
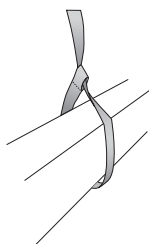


CAUTION

If your boat is new, use of this product is not recommended within the first four weeks of ownership of the boat. Some compounds used in new boats can release gases that will cause the dyes in boat covers to transfer to the boat, potentially staining the boat or its components. Boat covers can be used safely after this introductory period.

Installation

1. Cover sharp points (such as the corners of your boat's windshield) with cloth or a sponge to avoid stressing or tearing your boat cover.
2. Drape your cover over your boat with the tapered end that has the label marked "FRONT" at the bow.
3. Pull your cover below the rub rail around the entire boat.
4. Your cover includes quick-release straps that secure your cover to your boat. The side and bow straps are sewn to the cover and the stern straps are free and need to be attached to the cover with the buckles. Also include is a "D" ring near the motor area of the cover. This "D" ring is available for an additional tie down point and can be used as necessary. Use a line or cord and tie the "D" ring to something secure on the boat or trailer.
5. Locate the two stern straps with looped ends [C]. Route the strap around a trailer beam or stationary point on your boat and thread the clip end of the strap through the loop end of the strap (as shown in diagram) then hook the clip end of the strap into the corresponding buckle socket on the cover. Repeat with the other stern strap.
6. Locate the side straps [B]. (There are three or four straps on each side depending on your cover size.) Route the strap around a trailer beam and back up to the corresponding buckle socket on the cover. Repeat with the other side straps.



Repeat the above process with the bow strap [A].

After buckling ALL of the straps, cinch all straps tight and adjust their length as necessary to get a tight fit.

Trailer

To use your StormPro™ Canvas Boat Cover when trailering you MUST use all the included straps – failure to do so will invalidate your warranty.

Be sure to check that all the straps are tight and firmly attached. After driving the first mile, it is a good idea to stop and check your cover to ensure that all straps are secured correctly.

Cleaning and Care

Proper care will extend the life of your boat cover.

Using the included Cover Support Pole will help prevent water from pooling on your cover and help extend the life of your cover.

If your boat cover becomes dirty, it can be cleaned with lukewarm water and a soft brush. DO NOT USE SOAP—it can damage the protective coatings on your cover.

Storage

Be sure your cover is completely dry before you store it for any extended period.

Support Pole

The Support Pole is used to support any low areas (such as the area between the windshield and stern or windshield and bow) of the cover that could sag and allow water to collect.

Your Boat Cover Support Pole adjusts in height from 12" to 54". Assemble the pieces to the desired height with the large flat disk on the bottom and the smaller concave disk on the top. You can also run straps (not included) through the slots in the top of your pole connecting the pole top and other high areas of your boat to further support your cover. Remove the support pole and re-tension straps before transporting your boat.



CLASSIC ACCESSORIES, INC.