

THIS INSTRUCTION MANUAL CONTAINS IMPORTANT INFORMATION NECESSARY FOR THE PROPER ASSEMBLY AND SAFE USE OF THIS PRODUCT.

Maximum Output Single-Burner Cooker Model: SH140L

- Maximum Output System
- One Cast Burner with 60,00 Total BTU/hr
- High Pressure Regulator and Hose
- Needle Valve Temperature Controls
- Reversible Legs
- Leg Extensions

US Patent Numbers: D329162



Regulator Model #
JYT-GYA7/8

13" Maximum Pot Diameter



**WARNING: This appliance is not
for frying turkeys**

KEEP FOR FUTURE REFERENCE

IMPORTANT INSTRUCTIONS ON ASSEMBLY AND SAFETY FOR YOUR CAMP CHEF COOKER KEEP FOR FUTURE REFERENCE

WARNING: Read Thoroughly Before Use
DO NOT DISCARD THESE SAFETY INSTRUCTIONS

IF YOU SMELL GAS

1. Disconnect gas to the appliance.
2. Extinguish any open flame.
3. If odor continues, immediately leave the premises and call your gas supplier or local fire department.

FOR OUTDOOR USE ONLY

If stored indoors, detach hoses and leave fuel cylinder outdoors, with valve closed and plugged.

FUEL TYPE

This unit is designed for use with propane only. No other fuel is approved for use with this unit.

FUEL CYLINDER

Always store fuel bottles in a safe outdoor area with valve closed and plugged. Follow the manufacturer's recommendation for proper use and storage of propane cylinders. *Do Not Place Propane Cylinders Directly Under Any Part of the Burners.*

CAUTION

Place the tank so as to minimize the possibility of someone tripping over the connection hoses while the cooker is set up. *Never Lean Over or Stand too Near the Cooker, or Allow Children or Pets Near the Cooker During Use.*

COMBUSTIBLE MATERIALS

During operation of cooker, insure proper clearance from any combustible materials, in relation to the top, sides and back of cooking appliance. For outside use only. Do not use near flammable walls or under eaves or overhangs of homes or garages. Never leave unattended while hot or in use. Allow cooker to cool before take down and storage. The propane tank must always be stored outdoors in a well ventilated space. *Never Stand or Lean Over Cooker Burner While Lighting.*

FOR YOUR SAFETY

Follow all safety, set-up, lighting and cooking instructions. Do not store or use gasoline or other flammable vapors and liquids in the vicinity of this or any other appliance.

*LIMITED WARRANTY

Warranty covers all components of this outdoor cooker to be free from defects in materials and workmanship for one year from the day of purchase.

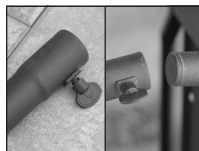
Within this period manufacturer will correct any defects by repairing or replacing defective parts of the equipment or making available the parts thereof, FOB Logan, UT 84321.

Manufacturer will not be obligated to repair or replace equipment which has been repaired by others, abused, altered or misused. Furthermore, manufacturer will not be held liable for any losses due to neglectful operation on the part of the purchaser. Upon the expiration of such warranty all such liability will terminate. No other warranties are expressed or implied. Returned merchandise will be accepted for repair or replacement only. Prior written approval and a return authorization number must be obtained. All returns must be shipped prepaid. Collect shipments will not be accepted.

Paint finish is not covered by this limited warranty or any implied warranty.

*Applies to contiguous U.S. states only.

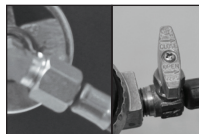
STEP 1



Screw out thumb screws until flush with inside of cooker leg. Apply extension to each leg. Hand tighten thumb screws.

Stand cooker upright on solid level ground. To level: loosen thumb screw on leg extension and adjust leg height. Hand tighten thumb screw. Do Not use stove without leg extensions.

STEP 2



Use an adjustable or 3/4" wrench to connect flare fitting to stove fitting. Tighten securely with wrench. **DO NOT OVER-TIGHTEN.**

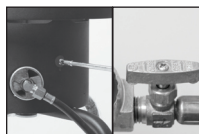
Before attaching regulator to tank, ensure that all valves are in the **OFF** position.

STEP 3



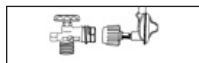
Attach regulator to tank. Check all connections to ensure tightness. With all valves in the off position, apply a soapy water solution to all fittings, valves and connections. Turn gas on at the tank and check for leaks at all connections. Small bubbles will appear if connection leaks. Tighten as needed.

STEP 4



Turn on tank. Place a lit long nose lighter into round lighting hole on cooker front. Turn valve knob to **ON**. Burner should light. If no flame, turn tank and control knob(s) **OFF**. Check tank for fuel. Repeat steps 2, 3 and 4.

REGULATOR



New Type 1 Connection: Right hand turn to connect securely to New Type 1 tank.

TROUBLE SHOOTING



PROBLEM WITH FLAME?

(Flame should burn blue with a hint of yellow.)

Yellow Flame: Adjust air shutter open until burner shows blue flame.

Still Yellow: Shut off valve(s) at stove and fuel tank. Through air shutter opening, clean venturi (burner neck) of obstructions such as cobwebs, dirt or bugs.

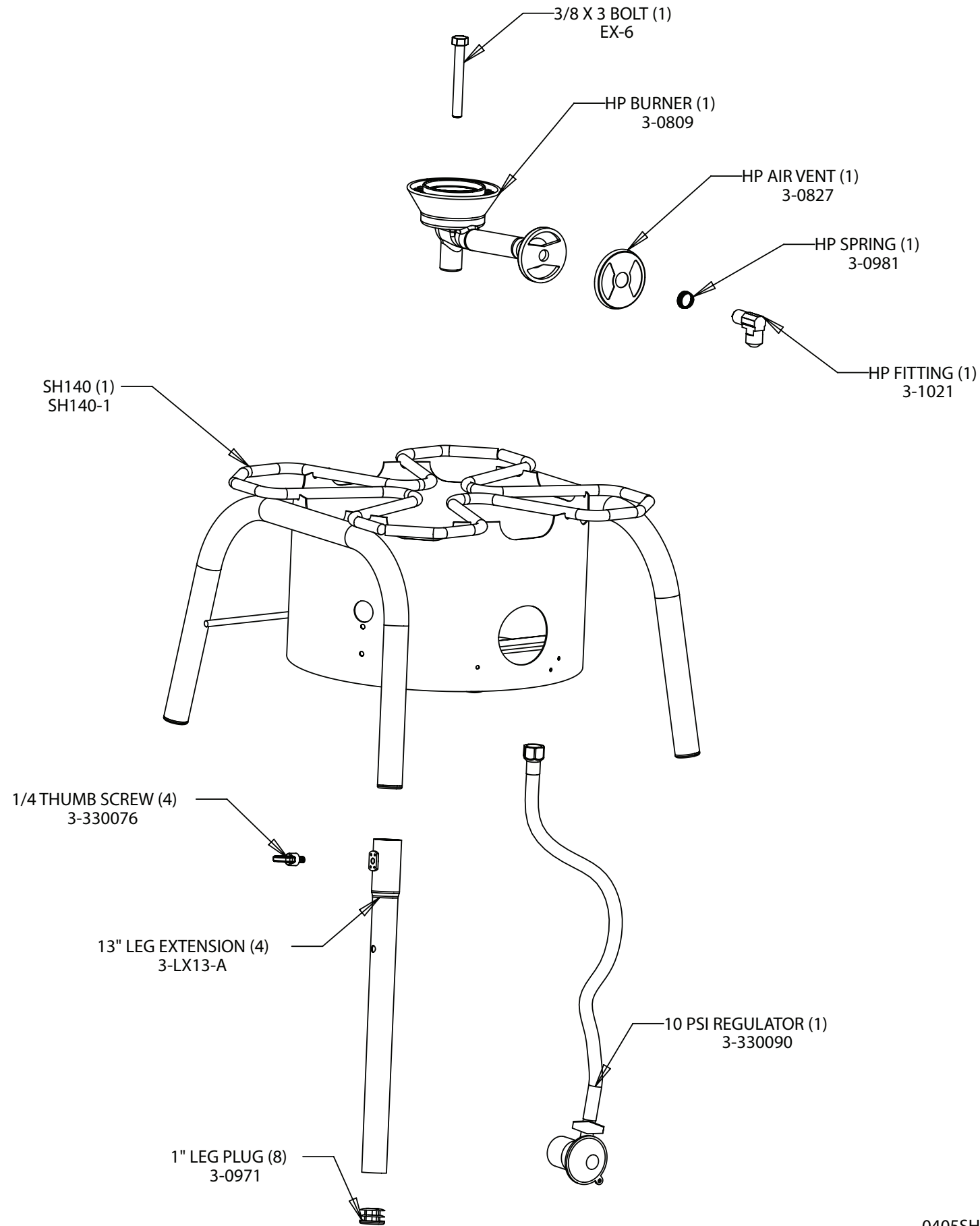
Small Flame: Flame will not adjust any larger... (Safety Feature: New Low Pressure Regulator will detect a sudden use of gas and automatically go into a "low flow" mode and needs to be reset) Turn off all valves at stove and at tank. Assure all fittings are tight and in good repair. Test for leaks. Repeat steps 2, 3 and 4.



venturi

High Pressure
Burner
Queimador De
Alto Presión
Haute Pression
Au Brûleur

SH140L PARTS LIST



SH140L Maximum Output Single-Burner

0405SH140parts

Check out the collection of camping we offer.