

WARNING: Read Thoroughly

Before Use

DO NOT DISCARD THESE SAFETY INSTRUCTIONS

IF YOU SMELL GAS

1. Disconnect gas to the appliance.
2. Extinguish any open flame.
3. If odor continues, immediately leave the premises and call your gas supplier or local fire department.

FOR OUTDOOR USE ONLY

If stored indoors, detach hoses and leave fuel cylinder outdoors, with valve closed and plugged.

FUEL TYPE

This unit is designed for use with propane only. No other fuel is approved for use with this unit.

FUEL CYLINDER

Always store fuel bottles in a safe outdoor area with valve closed and plugged. Follow the manufacturer's recommendation for proper use and storage of propane cylinders. *Do Not Place Propane Cylinders Directly Under Any Part of the Burners.*

CAUTION

Place the tank so as to minimize the possibility of someone tripping over the connection hoses while the cooker is set up. *Never Lean Over or Stand too Near the Cooker, or Allow Children or Pets Near the Cooker During Use.*

COMBUSTIBLE MATERIALS

During operation of cooker, insure proper clearance from any combustible materials, in relation to the top, sides and back of cooking appliance. For outside use only. Do not use near flammable walls or under eaves or overhangs of homes or garages. Never leave unattended while hot or in use. Allow cooker to cool before take down and storage. The propane tank must always be stored outdoors in a well ventilated space. *Never Stand or Lean Over Cooker Burner While Lighting.*

FOR YOUR SAFETY

Follow all safety, set-up, lighting and cooking instructions. Do not store or use gasoline or other flammable vapors and liquids in the vicinity of this or any other appliance.

IMPORTANT INSTRUCTIONS ON ASSEMBLY AND SAFETY FOR YOUR CAMP CHEF COOKER

Explorer Model: EX-60LW

- Two Universal Output (30,000 BTU/hr) Cast Burners
- Detachable Legs
- Convenient 31" Cooking Height
- Appliance-style Temperature Controls
- 3-Sided Windscreen
- Cloverleaf Cooking Surface

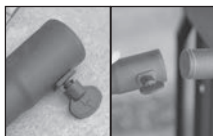


Tank Sold Separately

CAMP CHEF
The Way to Cook Outdoors®

KEEP FOR FUTURE REFERENCE

STEP 1



Screw out thumb screws until flush with inside of cooker leg. Apply extension to each leg. Hand tighten thumb screws.

Stand cooker upright on solid level ground. To level: loosen thumb screw on leg extension and adjust leg height. Hand tighten thumb screw.

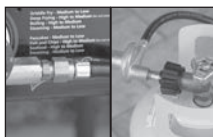
STEP 2



Use an adjustable or 3/4" wrench to connect flare fitting to stove fitting. Tighten securely with wrench. **DO NOT OVER-TIGHTEN.**

Before attaching regulator to tank, ensure that all valves are in the **OFF** position.

STEP 3



Attach regulator to tank. Check all connections to ensure tightness. With all valves in the off position, apply a soapy water solution to all fittings, valves and connections. Turn gas on at the tank and check for leaks at all connections. Small bubbles will appear if connection leaks. Tighten as needed.

STEP 4



Turn on tank. Place a lit long nose lighter into round lighting hole on cooker front. Turn valve knob to **LOW**. Burner should light. If no flame, turn tank and control knob(s) to **OFF**. Check tank for fuel. Repeat steps 2, 3 and 4.

REGULATOR



New Type 1 Connection: Right hand turn to connect securely to New Type 1 tank.

TROUBLE SHOOTING



PROBLEM WITH FLAME?
(Flame should burn blue with a hint of yellow.)

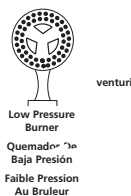
Yellow Flame: Adjust air shutter open until burner shows blue flame.

Still Yellow: Shut off valve(s) at stove and fuel tank. Through air shutter opening, clean venturi (burner neck) of obstructions such as cobwebs, dirt or bugs.

•Open Tank Valve Slowly

Small Flame: Flame will not adjust any larger... (Safety Feature: New Low Pressure Regulator will detect a sudden use of gas and automatically go into a "low flow" mode and needs to be reset) Turn off all valves at stove and at tank. Assure all fittings are tight and in good repair. Test for leaks. Repeat steps 2, 3 and 4.

•Open Tank Valve Slowly

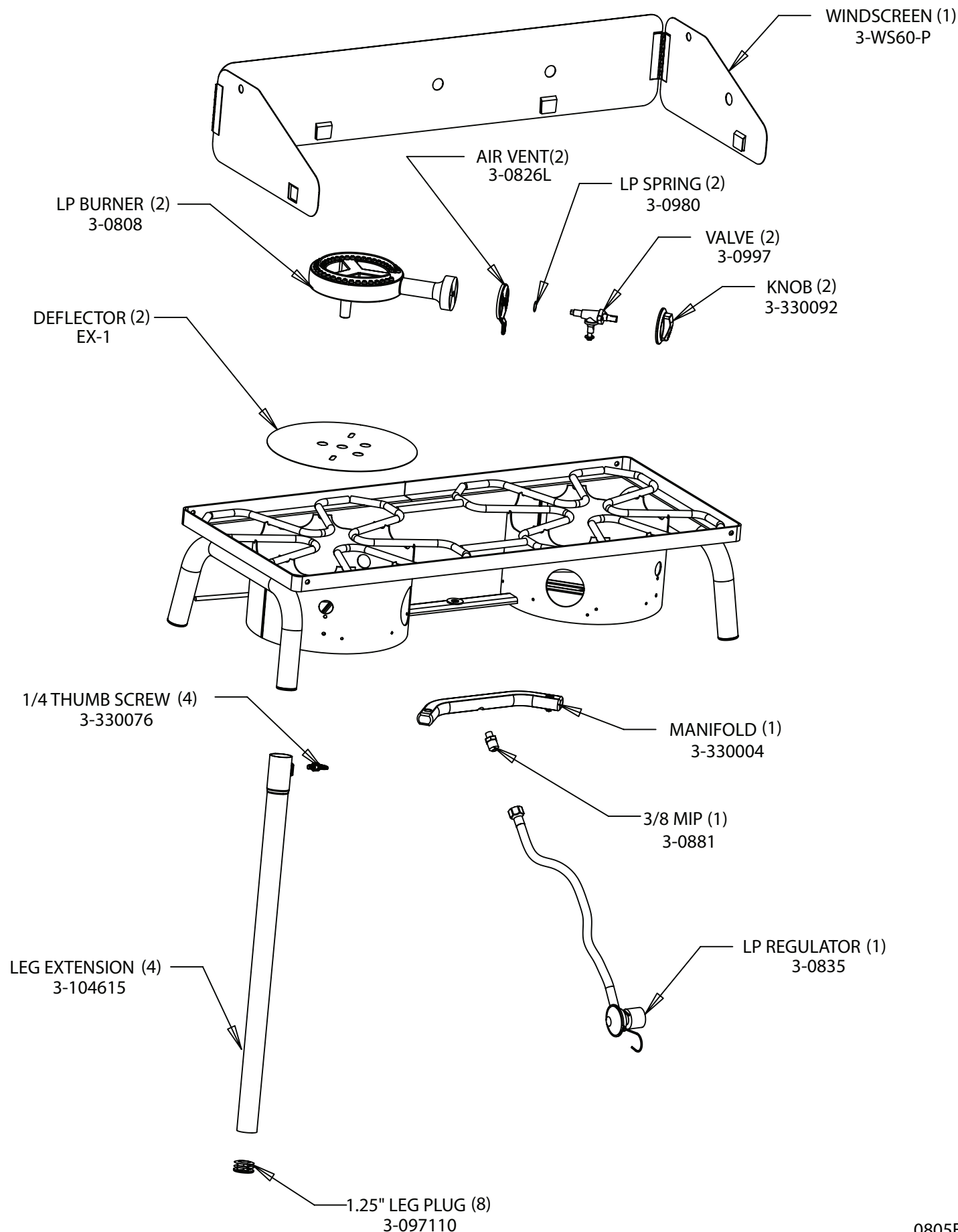


Low Pressure
Burner
Quemador
Baja Presión
Faible Pression
Au Brûleur

venturi

WARNING: Chemicals known to the state of California to cause cancer, birth defects, or other reproductive harm are created by the combustion of propane. Sport Utility, Big gASS Grill, Keg Roaster, Ultimate Roaster Are From the Makers of Camp Chef and Covered Under One or More of the Following Patents: 356714, 378646, 417120, 328547, 358057, 364772

EX60 PARTS LIST



*LIMITED WARRANTY

The manufacturer warrants stove components (except paint and finish) to be free from defect in materials and workmanship for 1 year from the date of purchase. All accessories (included with stove or purchased separately) are warranted from defect in materials and workmanship for 90 days from the original purchasing date. Within these periods, the manufacturer will replace or repair defective parts deemed unusable from its original intent by making available the parts thereof FOB Logan, UT 84321.

Product paint and finish is not warranted. The exterior finish of the product will wear down over time. Touch up the exterior with black, high temperature spray paint as needed. Do not paint the inside surfaces.

Clean the unit after each use to maintain the finish and prolong the life of your product. Wipe away all grease and ashes. Keep metal products free of moisture, salts, acids and harsh fluctuations in temperatures.

Warranty does not cover normal wear of parts or damage caused by misuse, abuse, overheating and alteration. Repairs or alterations made by anyone other than Camp Chef are not covered in this Warranty. Manufacturer will not be held liable for any losses due to neglectful operation. Furthermore, this Warranty does not cover damaged caused by natural disasters such as earthquakes, hurricanes, tornadoes, floods, lightning, fires, etc.

Upon the expiration of this warranty all such liability will terminate. No other warranties are expressed or implied.

Keep all original sales receipts. Proof of purchase is required to obtain Warranty services. Prior written approval and a Return Authorization Number must be obtained. Returned items will be accepted for repair or replacement only. Returns must be shipped prepaid. Collect shipment or shipments without a Return Authorization Number will not be accepted.

*Warranty applies to the contiguous US states only.

How to Convert a Fire Pit, Stove, & Smoker to Natural Gas



NGKIT, which is our Natural Gas Conversion Kit, is needed to convert any Low Pressure Stove, Smoke Vault, or Fire Pit.

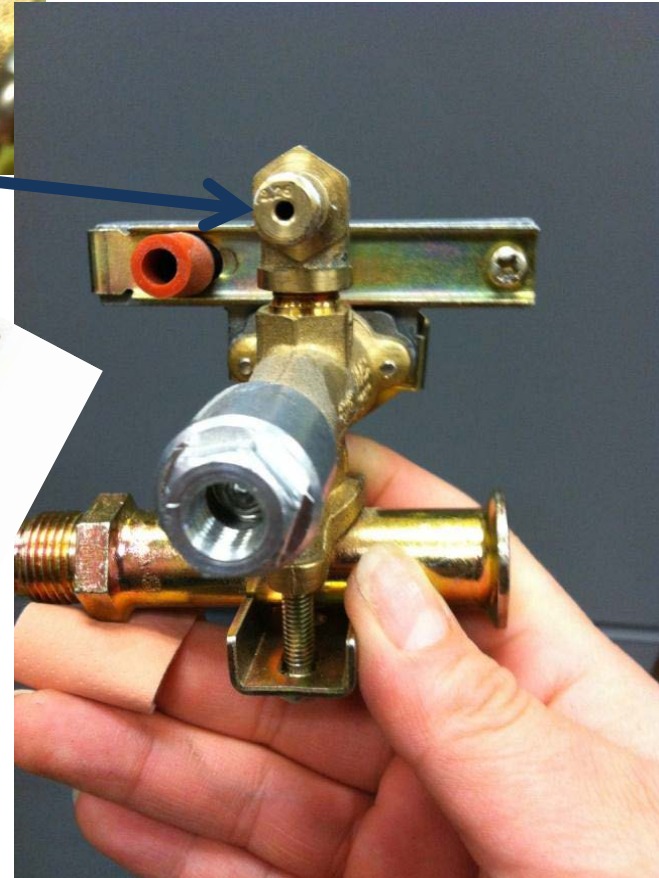
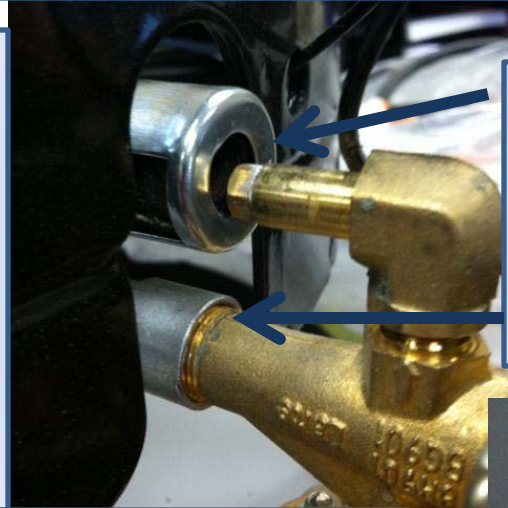


Fire Pit Conversion to Natural Gas

Safety first! Make sure everything is shut off and that hose is removed from propane tank. Remove knob and valve cover.

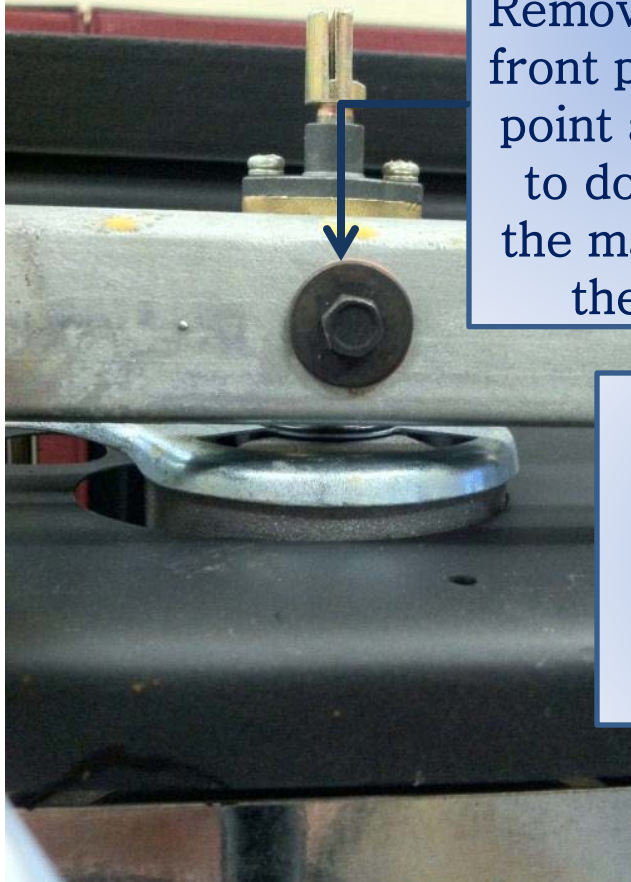
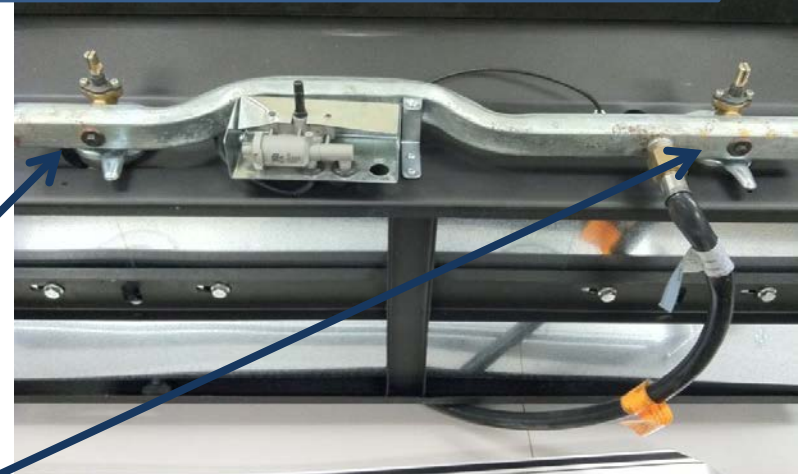
Remove valve from burner, unscrew from thermocouple wire, and disconnect electrode wire.

Once valve is removed from fire pit, drill the orifice with a 1/8th drill bit. Reassemble.



Stove Conversion to Natural Gas

Start by making sure all is shut off and that hose is removed from propane tank. Remove knobs and front panel. At this point all you need to do is remove the manifold from the valves..



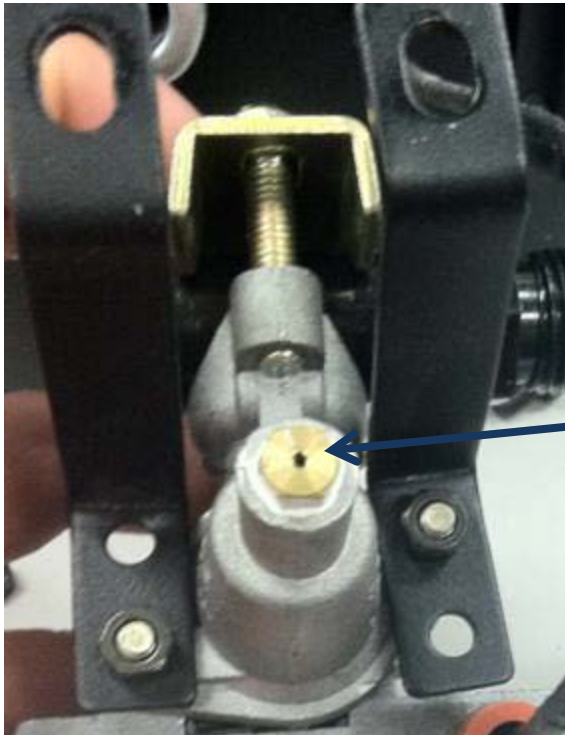
Once valve is removed from burner, drill it's orifice with a #45 drill bit. Reassemble.



NOTE: Only low pressure stoves (30,000BTU or less) can be converted to be used with natural gas.

Smoke Vault Conversion to Natural Gas

To convert the Smoke Vault to natural gas you'll need the NGKIT and a #51 drill bit.



If you haven't assembled your smoker yet, remove the valve from the burner and use the specified drill to widen the valve's orifice.

If your smoker is already assembled and has been used, make sure everything is turned off and disconnect the hose from your smoker. Then lay the smoker on it's back and remove the burner. This will give you access to the valve. Drill valve's orifice with a #51 drill bit.

