

INSTALLATION INSTRUCTIONS

2009-2015 SUBARU FORESTER

REAR BUMPER GUARD PART# 8SU01SS

| Qty | Hardware | Qty | Hardware |
|-----|-----------------------------------|-----|---|
| 2 | Mounting Brackets | 4 | Screws (bracket to bar) |
| 2 | T-bolts (bracket to chassis) | 8 | Flat Washers (bracket to bar) |
| 2 | Flat Washers (bracket to chassis) | 4 | Lock Washers (bracket to bar) |
| 2 | Lock Washers (bracket to chassis) | 4 | Nuts (bracket to bar) |
| 2 | Nuts (bracket to chassis) | 2 | *** Flat Washers to use with factory bolts (bracket to chassis) |



STEP1: Verify all parts are present. Read instructions carefully before starting installation.



Fig 1

STEP2: Starting from the Passenger Side, remove the muffler from the chassis.



Fig 2

STEP3: Locate the dashed line area on the heat shield as shown on Fig2, cutting a 2"x 4" opening.



Fig 3

STEP4: Remove the factory bolt on the opposite side of the welded nut. Mount the Passenger Side Mounting Bracket with the factory bolt and a Flat Washer. (Fig3)



Fig 4

STEP5: Locate another hole on the chassis as shown on Fig4, and secure the bracket with a Screw, a Flat Washer, a Lock Washer and a Nut.

STEP6: Repeat step4-5 for the Driver Side Mounting Bracket installation.

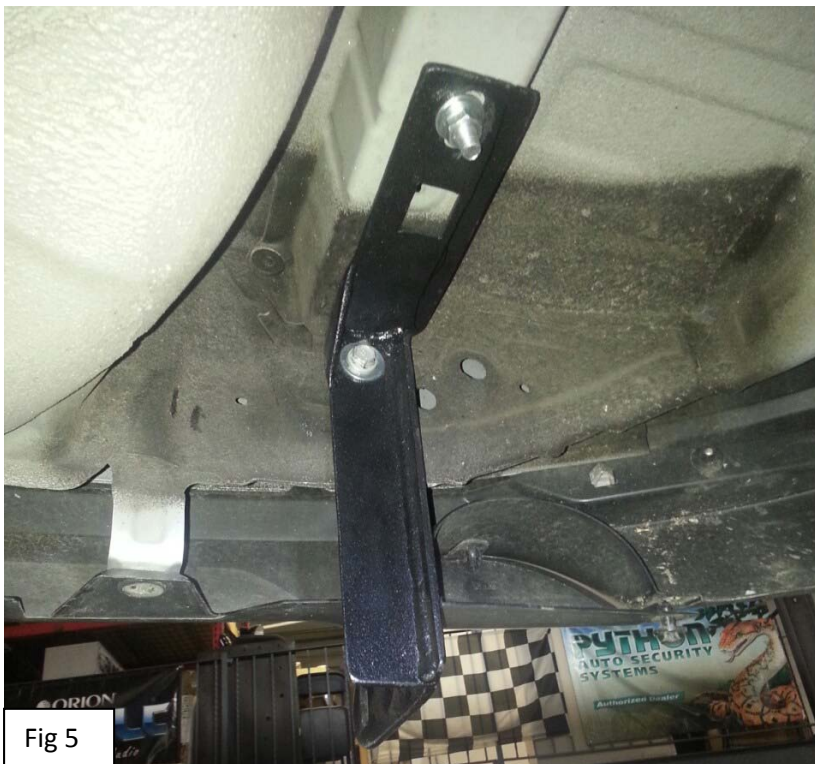


Fig 5

STEP7: Select the rear bumper guard and install it on the brackets. Level and adjust, then tighten all hardware in the end.