

Thank you for purchasing the Beat-Sonic SLX-140L [Audio Interface Adapter Kit](#). You have purchased from Japan's leading supplier of car audio interface adapters and accessories. Designed and made in Japan, this product represents our commitment to quality and excellence. Please read this manual carefully prior to installing this product to ensure correct operation.

Compatible Vehicles	OEM Nav	Year	Chassis Code
Lexus IS 350/250	No	2006 - 2013	GSE20/21/25
Lexus IS F	No	2008 - 2014	USE20
Lexus IS C	No	2010 - 2015	GSE20/21

* Automatic transmission models only.

■Features

- Allows installation of a double-DIN (178mm x 100mm) head unit to replace OEM head unit.
- Retains full function of OEM heater, air-conditioner and climate control systems.
- Compatible with both Mark Levinson sound systems and Lexus Premium sound systems.
- Plug and play adapter with no modifications required to factory vehicle electrical harness.
- Provides steering wheel audio controls to new head unit*.

* Head unit must support steering wheel control input. Additional steering wheel control adapter may be required.

■Important

- This installation kit is designed for automatic transmission models only. The fascia panel garnish will not suit the manual transmission center console.
- Center Panel audio buttons related to the OEM CD player, radio, MP3 playback etc. will no longer function after removing the OEM head unit. All audio adjustment settings except fader are fixed to neutral and cannot be adjusted.
- OEM Handsfree / Bluetooth Pairing, Voice Command and Phonebook will no longer function after removing the OEM head unit. Delete any registered mobile phones prior to removing the OEM head unit (see Appendix B).
- Center console AUX input and Radio Data Service (RDS) will no longer function after removing the OEM head unit.
- This product is not compatible with connector type (20-pin) steering wheel control adapters. Please use wired type only.
- This product will not rectify any pre-existing faults with the electrical system, factory amplifier and/or speakers.
- This product should be installed by an experienced motor vehicle technician or automotive electrical professional.
- The user assumes all responsibility for any damages and/or injuries caused as a result of improper installation.

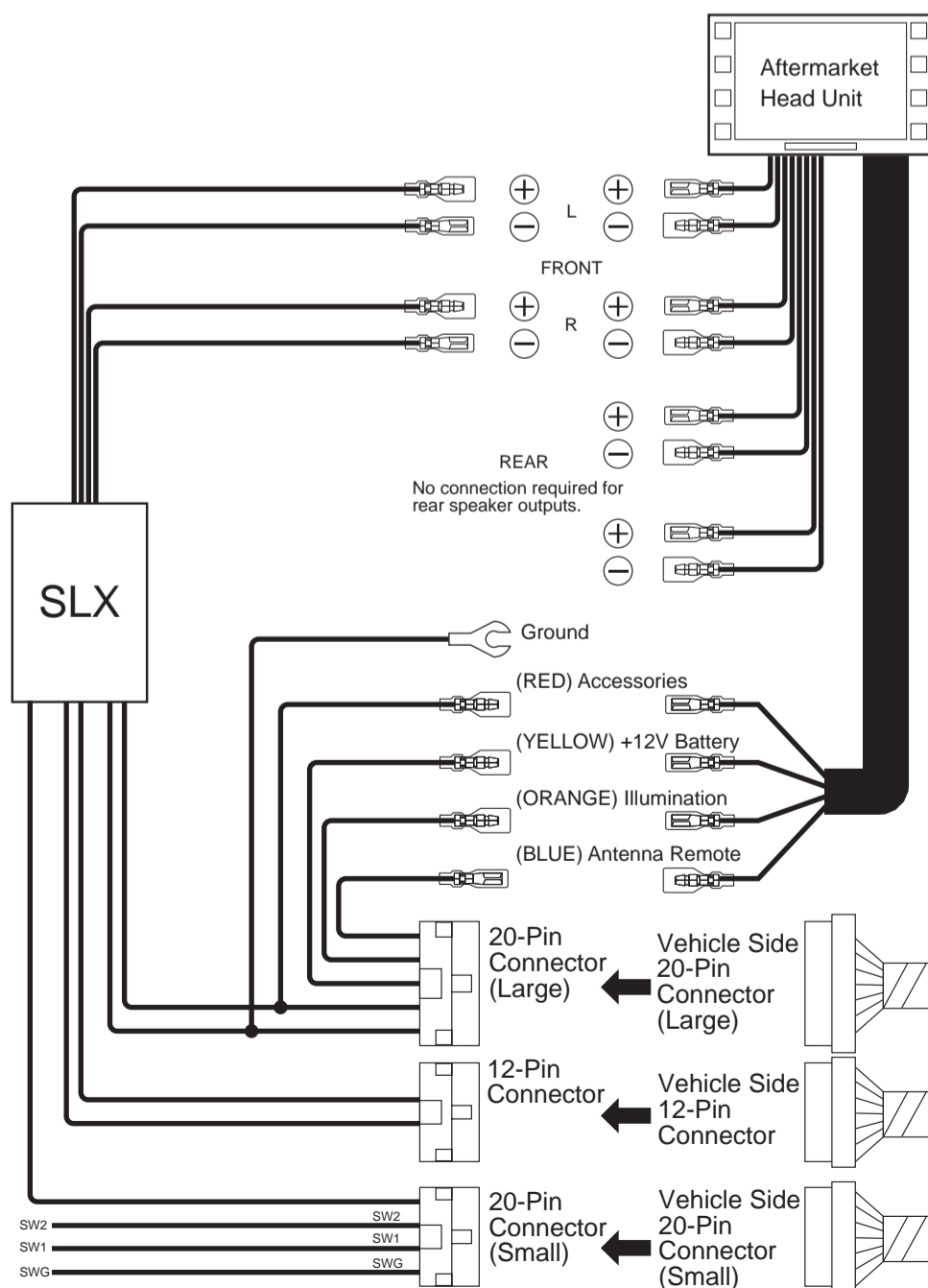
■Precautions

- Perform installation with patience and due care to prevent damage to this product or any part of the vehicle.
- Ensure all connectors, cables and terminals are correctly secured and fully inserted. Loose and/or improperly secured connectors will cause malfunction.
- Always grasp the connector plug when disconnecting the cable harness. Never disconnect connectors by pulling on the harness wires as serious damage can occur.
- Do not attempt to install this product on any other vehicle other than the specified models.
- Do not disassemble, modify or attempt to repair this device.
- Beat-Sonic and its affiliates shall not be held responsible for any consequence, either directly or otherwise, as a result of installing and/or using this product.
- Disconnect negative terminal of the vehicle battery prior to installation to prevent risk of short circuit.

■Contents

- Interface Adapter Module and Harness x 1
- 2-DIN Fascia Garnish (Left & Right) x 1 set
- Mounting Brackets (Left & Right) x 1 set
- M4 Nuts x 8
- Adhesive Padding Tape x 2
- Instruction Manual x 1

Connection Diagram



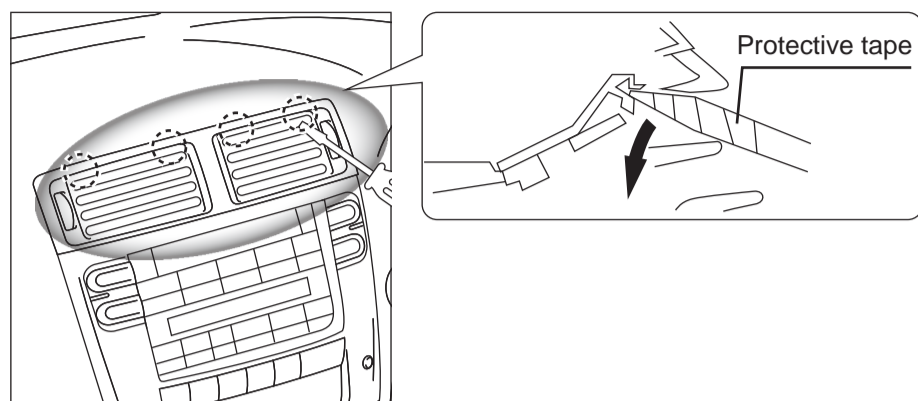
* See Appendix A. for steering wheel audio controls.

Installation

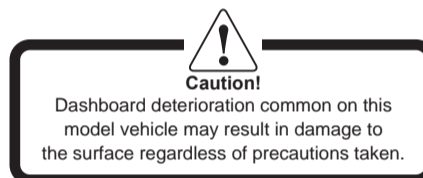
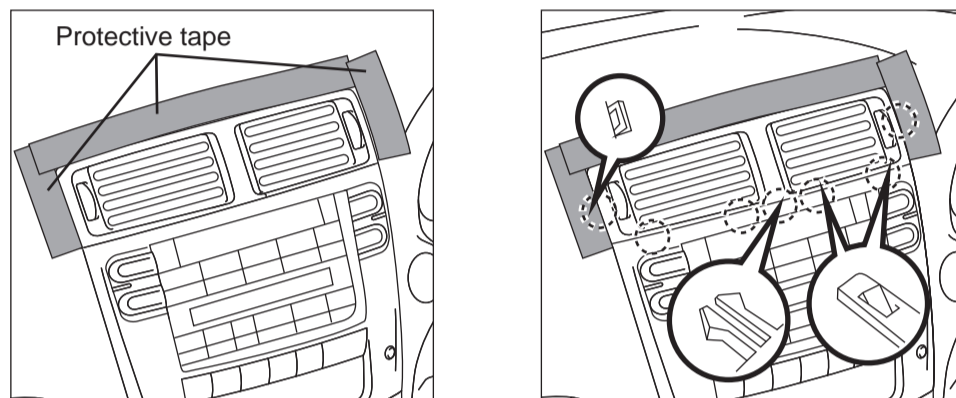
1. Remove the Integration Control Panel Assembly

Disconnect the negative terminal of the vehicle battery and wait at least 90 seconds before proceeding to prevent accidental airbag deployment.

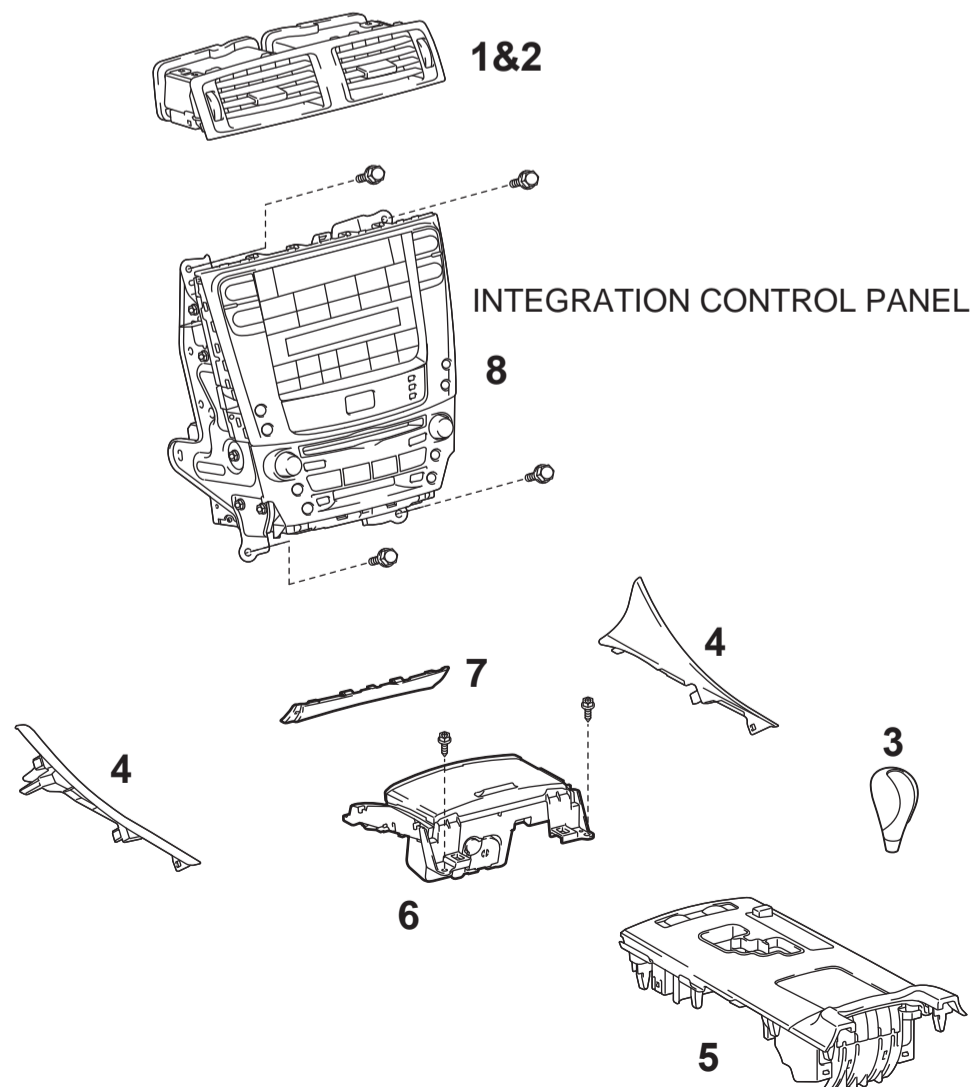
- 1.1 Remove the center vent assembly by carefully releasing the upper 4 internal vent claws using a small flat blade screwdriver. Wrap the end of the screwdriver with protective tape to prevent scratching the surface.



- 1.2 Apply low tack painters tape around the edges of the vent assembly. Use a molding removal tool to disengage the right side claw then disengage the remaining 3 claws by pulling out the vent by hand. Do not use tool or attempt to pry the bottom section of the vent where it joins the Integration Control Panel.

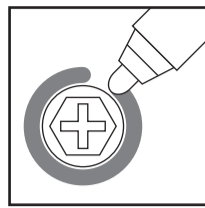
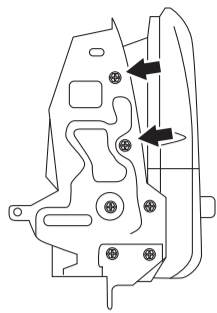


- 1.3 Remove the shift lever knob by unscrewing counter-clockwise.
- 1.4 Remove the console garnish trims by first releasing the endmost clip then pulling away from the radio receiver.
- 1.5 Remove the console panel sub-assembly by pulling up to release the 8 clips.
- 1.6 Remove the 2 screws that hold the ashtray and remove. This panel and garnish trims are not used for re-assembly with 2-DIN head unit.
- 1.7 Unclip and remove the radio lower finisher panel.
- 1.8 Remove the 4 bolts that secure the Integration Control Panel. Disconnect all connectors to remove completely.

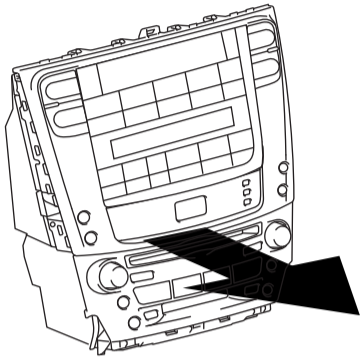


2. Install the Double DIN Head Unit.

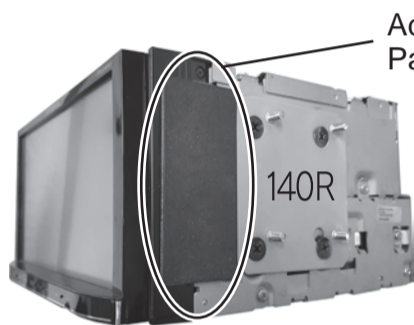
2.1 Use a marker pen to mark the positions of the upper 2 fasteners on both sides of the brackets before unscrewing and removing. This is important to ensure correct alignment when reassembling.



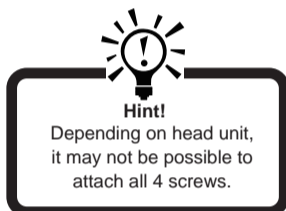
2.3 With both brackets removed, hold the radio receiver stationary and slide the Integration Control Panel forward in the direction of the arrow as shown below to separate.



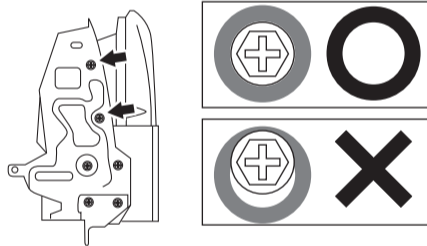
2.3 Attach the supplied mounting brackets to the 2-DIN aftermarket head unit using the screws that came supplied with the head unit. Take care to install the left (marked "140L") and right (marked "140R") brackets accordingly. Apply the supplied adhesive padding tape to both sides as shown below.



Adhesive Padding Tape



2.4 Re-attach one of the OEM brackets to one side of the Integration Control Panel and align the fasteners with the previously marked positions. Attach the 2-DIN aftermarket head unit to the bracket and lightly secure using the fasteners. Do not fully tighten the fasteners yet as adjustment may be necessary. Repeat for the other side so that both OEM brackets are attached.

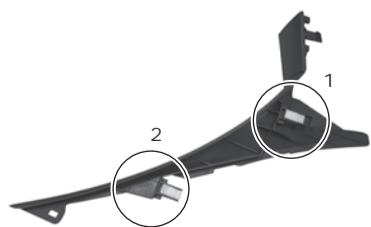
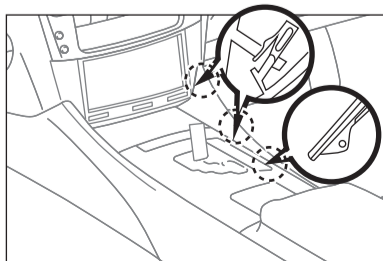


2.5 Align the 2-DIN aftermarket head unit so that it is exactly centered with respect to the Integration Control Panel. Use a ruler to measure the distance from the outside edge of the Integration Control Panel to the side of the 2-DIN aftermarket head unit. The distance on both sides must be exactly the same. Tighten the fasteners on either side then recheck to confirm alignment and adjust if necessary.



3. Re-Install the Integration Control Panel with 2-DIN Head Unit

- 3.1 Connect the SLX-140L adapter harness and all Integration Control Panel connectors. Refer to Appendix A. for connection of steering wheel audio controls.
- 3.3 Re-install the Integration Control Panel assembly taking care not to crush or kink the wiring behind. Secure using the 4 mounting fasteners.
- 3.4 Confirm operation of new head unit, steering wheel controls and Integration Control Panel functions including air-con, heater, illumination, hazard switch etc. Buttons related to the factory radio receiver will no longer work (see Appendix B).
- 3.5 Re-install the ashtray and console sub panel assembly.
- 3.6 Insert fascia garnish trim on either side of the 2-DIN aftermarket head unit and sub panel assembly. Start by locating clip 1 then clip 2 as shown below.

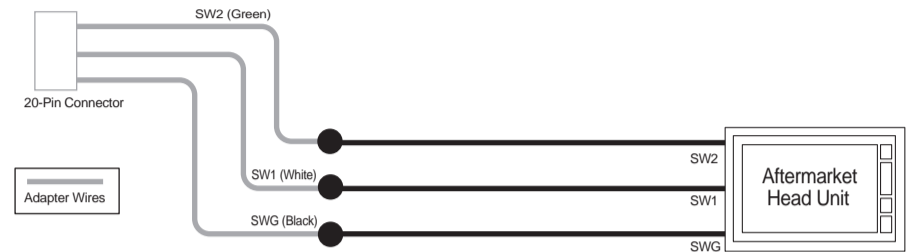
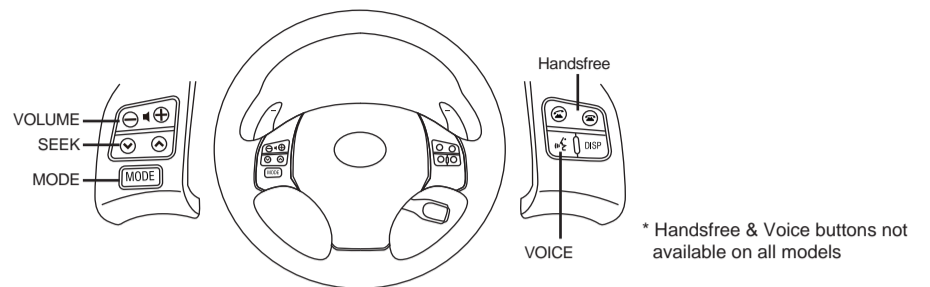


3.7 Re-install the upper vent to complete the installation.

Appendix A.

Steering Wheel Audio Controls

The SLX-140L provides the necessary wires to connect the OEM steering wheel audio control buttons to the aftermarket head unit. Depending on the head unit, a steering wheel control interface (available separately) may be required.



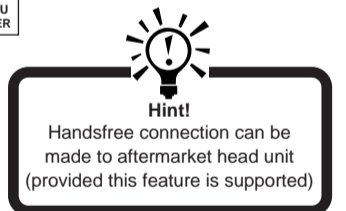
1. Connect SWG (Pin-6 Black) to the SWG input on the aftermarket head unit.
2. Connect SW1 (Pin-7 White) to the SW1 input on the aftermarket head unit.
3. Connect SW2 (Pin-8 Green) to the SW2 input of the aftermarket head unit.

Appendix B.

Vehicles equipped with Handsfree

Handsfree and Bluetooth is not retained after the OEM head unit has been removed. Ensure that all registered mobile phones are deleted prior to removing the OEM head unit to prevent accidental pairing to the redundant Bluetooth connection.

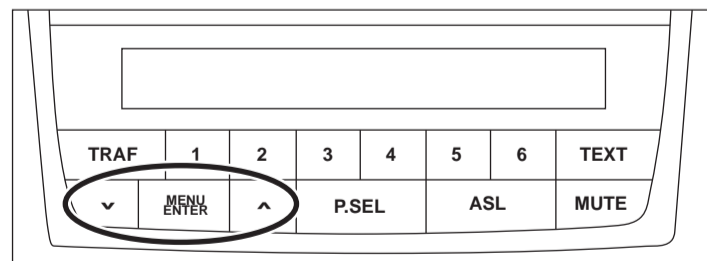
1. Select "Delete Phone" using a voice command or , and
2. Select mobile phone to be deleted using , and
3. Select "Yes" using , and



Audio Settings

Only the buttons circled below are retained after the OEM head unit has been removed. All other Integration Control Panel buttons related to the OEM radio will not function after the OEM head unit has been removed.

With the exception of fader (FAD), all audio setting adjustments are fixed to neutral and cannot be adjusted by the Integration Control Panel. Adjustment can be made via the aftermarket head unit.



* Buttons may vary depending on grade and model.