



2.5 COILOVER SHOCKS & 2.5 DSC COILOVER SHOCKS



APPLICATION	PART NUMBER	LIFT HEIGHT	REQ'D BRACKET	NOTE
15-16 Chevy Colorado/GMC Canyon	88302136	6"	N/A	1,2
	88306136 (DSC)	6"	N/A	1,2
07-17 Chevy/GMC 1500 17-14 Tahoe, Yukon, Suburban, Avalanche 1500	88302135	4"	N/A	1,2
	88306135 (DSC)	4"	N/A	1,2
	88302059	6"	N/A	1,2
	(DSC) 88306059	6"	N/A	1,2
11-16 Chevy/GMC 2500/3500	88406128 (DSC)	2.5"	N/A	1,2
	88406155 (DSC)	6.5"	N/A	1,2
06-16 Dodge 1500	88302073	4-6"	N/A	1,2
03-13 Dodge 2500/ 03-12 Dodge 3500 - Diesel	88402109	3"	122810	1,2
	88402096	6"	122810	1,2
	88402097	8"	122810	1,2
14-16 Ford F150	88302134	4"	N/A	1,2
	88306134 (DSC)	4"	N/A	1,2
	88302114	6"	N/A	1,2
	88306114 (DSC)	6"	N/A	1,2
09-13 Ford F150	88302063	6"	N/A	1,2
11-16 Ford F250/F350	88402148	2.5"	123212	1,2
	88402149	4"	123212	1,2
	88402127	6"	123612	1,2
	88406127 (DSC)	6"	123612	1,2
	88402143	8"	123612	1,2
88406143 (DSC)	8"	123612	1,2	
05-16 Toyota Tacoma	88302048	6"	N/A	1,2
07-16 Toyota Tundra	88302124	4.5"	N/A	1,2
	88306124 (DSC)	4.5"	N/A	1,2
	88302057	7"	128700	1,2

Notes

1. Designed to work with BDS Suspension lifts
2. Fully Adjustable Coilover Assembly



SPANNER WRENCH

The spanner wrench is a pin-style design that is precision machined to fit in the Fox 2.5 Coilover adjustment collar holes. This precise fit provides the best grip and reduces the chance of damage to the tool, adjustment collar and your knuckles. The tool was designed to accept any standard 1/2" drive ratchet (sold separately) for ease of use.

#BDS129600.....53BK31



2.5 DSC COILOVER SHOCKS

Dual Speed Compression (DSC) technology improves the FOX coilover performance with easy adjustability to match your terrain. Same benefits of FOX 2.5 coilovers now with DSC for 12-points of high speed compression adjustment and 10-points of low speed adjustment to dial in the ride.

CHEVROLET/GMC
DODGE
FORD
JEEP
SUZUKI
TOYOTA
POSI-LOK
SHOCKS/STEERING STABILIZERS
ACCESSORIES
APPAREL & PROMOTIONAL
PRODUCT SPECS
VEHICLE SPECS



2.0 PERFORMANCE SERIES SHOCK

DIRECT REPLACEMENT HIGH-PERFORMANCE 2" SHOCK ENGINEERED SPECIFICALLY FOR YOUR BDS SUSPENSION SYSTEM

APPLICATION SPECIFIC VALVING

- Fox and BDS joined forces to custom valve each application to work perfectly with each BDS Suspension system. The basic shock design is based on Fox Racing Shox race products, but re-designed to turn your BDS equipped truck or Jeep into an offroad machine.

HEAT-REDUCING DESIGN

- Cold-forged, metal impacted 6061 T6 aluminum shock body dissipates heat three times faster than a conventional steel body shock. The 2.0 Performance Series shock runs as cool as a 2.5 diameter shock on the same application.
- FOX Racing Shox formulated race shock oil developed for ultimate performance at variable temperatures.

TOUGH FINISH

- CNC machined aluminum components are Type II hard anodized to a scratch- and fade-free black finish.
- Heavy-duty 5/8" chrome shafts are induction case hardened to over 55 Rockwell C, virtually eliminating scratches caused by roost and debris.

FADE-FREE PERFORMANCE

- The Internal Floating Piston (IFP) design separates shock oil from the high pressure nitrogen charged gas chamber, eliminating oil aeration and cavitation, while providing a predictable ride — capable of handling the roughest conditions with fade-free performance.

CHEVROLET/GMC 4WD

MODEL	YEAR	LIFT	FRONT SHOCK	REAR SHOCK
Colorado/Canyon	15-16	5.5"	n/a	98224758
Truck K1500/C1500	14-17	0-2"	n/a	98224719
		4"	n/a	98224759
		6"	n/a	98224759
Truck K1500/C1500	07-13	0"	n/a	98224719
		4"	n/a	98224758
		6"	n/a	98224759
Truck K1500	99-06	4.5"	98224602	98224758
		6.5"	98224602	98224759
		88-98	6"	98224620
Truck K2500 HD & Non-HD	11-16	2.5"	n/a	98224758
		4.5"	98224613	98224758
		6.5"	98224613	98224769
	01-10	4.5"	98224605	98224759
		7"	98224606	98224761
Truck C2500 HD (2WD)	01-10	7"	98224606	98224761
Trailblazer/Envoy (2WD/4WD)	02-09	2"	n/a	98224619
Truck K10, 20, 30	73-87	2.5"	98224620	98224629
		4"	98224620	98224639
		6-8"	98224650	98224639
	69-72	4"	98224620	98224660
Tahoe, Yukon, Suburban, Avalanche, 1500	07-14	0-2"	n/a	98224719
		4"	n/a	98224719
		6"	n/a	98224759
	00-06	4.5"	98224602	98224719
		6.5"	98224602	98224759
92-98	6"	98224620	98224662	
Suburban, Avalanche 2500	01-06	4.5"	98224605	98224759
Blazer, Jimmy K5, Suburban 10, 20	73-91	7"	98224606	98224761
		2.5"	98224620	98224629
		4"	98224620	98224639
		6-8"	98224650	98224639

Notes: 1. With BDS Suspension system

CHEVROLET/GMC 4WD WITH OE FRONT DUAL SHOCKS

MODEL	YEAR	LIFT	FRONT SHOCK	FRONT AUXILIARY	REAR SHOCK
Truck K10, 20, 30	81-87	2.5"	98224620	98224620	98224629
		4"	98224620	98224650	98224639
		6"	98224650	98224650	98224639
		8"	98224650	98224660	98224639
Blazer, Jimmy K5, Suburban 10, 20	81-91	2.5"	98224620	98224620	98224629
		4"	98224620	98224650	98224639
		6"	98224650	98224650	98224639
		8"	98224650	98224660	98224639



CHEVROLET/GMC
DODGE
FORD
JEEP
SUZUKI
TOYOTA
PUSH-LOCK
SHOCKS/STEERING STABILIZERS
ACCESSORIES
APPAREL & PROMOTIONAL
PRODUCT SPECS
VEHICLE SPECS



DODGE 4WD

MODEL	YEAR	LIFT	FRONT SHOCK	REAR SHOCK
Ram Truck 1/2-Ton	09-16	4"	n/a	98224758 - 98224712 Air Ride
		6"	n/a	98224758
		0"	n/a	98224719
	06-08	4"	n/a	98224758
		6"	n/a	98224769
		2-3"	98224700	98224759
Ram Truck 1/2-Ton - Mega Cab	06-08	6"	98224750	98224761
Ram Truck 1/2-Ton	94-01	0-2"	98224710	98224719
		3"	98224700	98224759
		5"	98224750	98224761
Ram Truck 3/4-Ton	14-16	2"	98224710	98224705
		3"/4" Gas	98224700	98224705
		4"/5.5" Gas	98224752	98224756
		6"	98224752	98224756 - 98224753 Air Ride
		8"	98224754	98224763
Ram Truck 3/4-Ton	03-13	2-3"	98224700	98224759
		6"	98224750	98224761
		8"	98224751	98224761
Ram Truck 1-Ton	13-16	2"	98224710	98224759
		3"/4" Gas	98224700	98224759
		4"	98224752	98224759
		6"/5.5" Gas	98224752	98224761
Ram Truck 1-Ton	03-12	8"	98224754	98224761
		2-3"	98224700	98224759
		6"	98224750	98224761
Ram Truck 3/4-Ton Power Wagon	05-13	8"	98224751	98224761
Ram Truck 3/4-Ton	94-02	4"	98224710	98224719
Ram Truck 3/4-Ton-8,800 GVW	94-02	0-2"	98224700	98224719
Ram Truck 3/4-Ton	94-02	4.5"	98224750	98224761
"W" Truck 1/2-Ton, 3/4-Ton	69-93	5"	98224650	98224760

FORD 4WD

MODEL	YEAR	LIFT	FRONT SHOCK	REAR SHOCK
Expedition	98-02	6"	98224804	98224628
F150	04-16	0"	n/a	98224651
		4"	n/a	98224828
	97-03	6"	n/a	98224760
		6"	98224804	98224860
F250, F350 Super Duty	2017	1-2"	98224710	98224717
		4"	98224700	98224718
		0-2"	98224710	98224660
	05-16	2.5"	98224710	98224760
		4"	98224700	98224760
		6"	98224750	98224760
		8"	98224751	98224765
		2.5"	98224650	98224660
		4"	98224650	98224760
	99-04	6"	98224660	98224760
		8"	98224660	98224765
		4"	98224650	98224660
F350	80-97	4"	98224650	98224660
Excursion	00-05	4"	98224650	98224662
		6"	98224650	98224762
		8"	98224660	98224762
		10"	98224660	98224766

JEEP 4WD

MODEL	YEAR	LIFT	FRONT SHOCK	REAR SHOCK
CJ5, CJ7, Scrambler	82-86	2.5"	98224900	98224950
	76-81	4"	98224920	98224920
CJ5, CJ6, M38A1	53-75	2.5"	98224900	98224920
	Wrangler YJ	87-95	3.5"-4.5"	98224860
Wrangler TJ		5-6"	98224660*	98224920
		97-06	2"	98224979
3"	98224965		98224980	
4.5"	98224967		98224976	
6.5"	98224962		98224974	
Wrangler JK	07-17	2-3"	98224921	98224951
		4"-4.5"	98224921 - 98224922 LA	98224959
	5.5"	98224922	98224958	
	6.5"	98224952	98224958	
	Cherokee XJ	84-01	0-2"	98224979
3"			98224965	98224980
4.5"			98224965	98224974
6.5"			98224961	98224920
8.5"			98224962	98224974
Comanche MJ	86-92	3"	98224965	98224920
Grand Cherokee ZJ	93-98	0-1"	98224979	98224900
		2"	98224979	98224950
		3"	98224965	98224950
		4.5"	98224965	98224920
Grand Cherokee WJ	99-04	4"	98224978	98224971

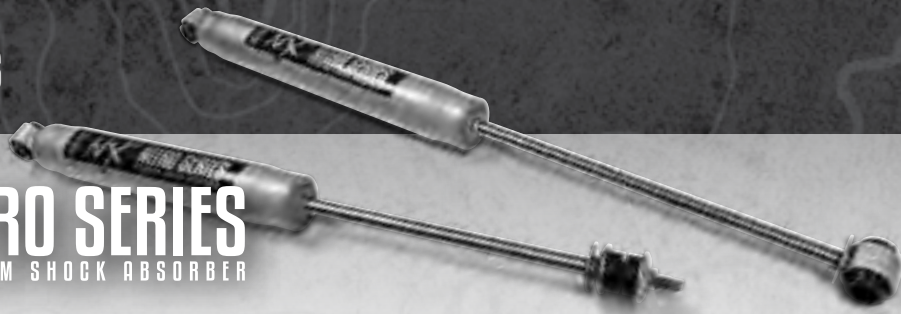
*Stem eliminator kit #124015 required for installation

TOYOTA 4WD

MODEL	YEAR	LIFT	FRONT SHOCK	REAR SHOCK
Toyota Tundra	07-16	0"-3"	n/a	98224700
		4.5"-7"	n/a	98224952
Toyota Tacoma	05-16	2-3"	n/a	98224954
		4"	n/a	98224954
		6"	n/a	98224953
		6"	n/a	98224953

NX² SERIES SHOCK ABSORBERS

NX² NITRO SERIES PREMIUM SHOCK ABSORBER



These NX² shocks give high-end performance at an affordable price. They use a pressurized nitrogen charged twin-tube design with 10-stage velocity sensitive valving for lightning fast dampening adaptive to whatever terrain you find yourself traversing on or off-road. The 2" bodied shocks use a large 1-3/8" fluted piston, self lubricating seals and a 14mm hardened chrome shaft to help resist rock chips and corrosion. The ends are dual welded for increased strength. Polyurethane bushings and metal sleeves are included to make swapping over your shocks a breeze. These shocks are offered in various stem and eyelet bushing configurations for custom applications and available to work with all current BDS lift kits. The exterior of the shocks are finished in a durable metallic silver paint with NX² branded decals. The NX² shocks will accept standard shock boots, which are available separately. Upgrade your vehicle's shocks with the NX² Nitro Series from BDS Suspension.

CHEVROLET/GMC 4WD

MODEL	YEAR	LIFT	FRONT SHOCK	REAR SHOCK	NOTES
Colorado/Canyon	15-16	5.5"	n/a	85758	
Truck K1500/C1500	07-17	0"	n/a	85719	
Truck K1500/C1500	07-17	4"	n/a	85758 (07-13) 85759 (14-17)	
Truck K1500/C1500	07-17	6"	n/a	85759	
Truck K1500	99-06	0"	85612	85719	
Truck K1500	99-06	4.5"	85602	85758	
Truck K1500 (Non HD)	99-06	6"	85602	85759	
Truck C1500 (2WD-Non HD)	99-06	6"	85604	85759	
Truck K2500 HD	11-16	4.5"	85613	85758	
Truck K2500 HD	11-16	6.5"	85613	85769	
Truck K2500 HD & Non-HD	01-10	7"	85606	85761	
Truck K2500 HD & Non-HD	01-10	4.5"	85605	85759	
Truck C2500 HD (2WD)	01-10	7"	85606	85761	
Hummer H2	03-08	6"	85605	85761	
Truck K1500-3500	88-98	0-3"	85601	85608	2
Truck K1500 6 lug	88-98	6"	85600	85609	
Truck K10, 20, 30	73-87	2.5"	85620	85629	
Truck K10, 20, 30	73-87	4"	85620	85639	
Truck K10, 20, 30	73-87	6-8"	85650	85639	
Truck K10, 20, 30	69-72	4"	85620	85660	
Tahoe, Yukon, Suburban, Avalanche, 1500	07-14	0-4"	n/a	85719	
Tahoe, Yukon, Suburban, Avalanche, 1500	07-14	6"	n/a	85759	
Tahoe, Yukon, Suburban, Avalanche, 1500	00-06	4.5"	85602	85719	
Tahoe, Yukon, Suburban, Avalanche, 1500	00-06	6.5"	85602	85759	
Suburban, Avalanche 2500	01-06	4.5"	85605	85759	
Suburban, Avalanche 2500	01-06	7"	85606	85761	
Tahoe, Yukon, Suburban 1500, 2500 6 lug	92-98	0-3"	85601	85608	
Tahoe, Yukon, Suburban 1500, 2500 6 lug	92-98	6"	85600	85609	
Blazer, Jimmy KS, Suburban 10, 20	73-91	2.5"	85620	85629	
Blazer, Jimmy KS, Suburban 10, 20	73-91	4"	85620	85639	
Blazer, Jimmy KS, Suburban 10, 20	73-91	6-8"	85650	85639	
Trailblazer	02-09	2"	n/a	85619	
S-Series Blazer, Truck, ZR2	83-05	0-3"	85603	85608	
S-Series Blazer, Truck, ZR2	83-05	5"	85610	85608	1

Notes

1. With BDS Suspension system

2. These applications are for newer body style K3500 with torsion bar front suspension.

CHEVROLET/GMC WITH OE FRONT DUAL SHOCKS 4WD

MODEL	YEAR	LIFT	FRONT SHOCK	FRONT AUXILIARY	REAR SHOCK
Truck K10, 20, 30	81-87	2.5"	85620	85620	85629
Truck K10, 20, 30	81-87	4"	85620	85650	85639
Truck K10, 20, 30	81-87	6"	85650	85650	85639
Truck K10, 20, 30	81-87	8"	85650	85660	85639
Blazer, Jimmy KS, Suburban 10, 20	81-91	2.5"	85620	85620	85629
Blazer, Jimmy KS, Suburban 10, 20	81-91	4"	85620	85650	85639
Blazer, Jimmy KS, Suburban 10, 20	81-91	6"	85650	85650	85639
Blazer, Jimmy KS, Suburban 10, 20	81-91	8"	85650	85660	85639

Note: The front auxiliary is the inner long shock.

CHEVROLET/GMC
DODGE
FORD
JEEP
SUZUKI
TOYOTA
PUSH-LOCK
SHOCKS/STEERING STABILIZERS
ACCESSORIES
APPAREL & PROMOTIONAL
PRODUCT SPECS
VEHICLE SPECS

DODGE 4WD

MODEL	YEAR	LIFT	FRONT SHOCK	REAR SHOCK
Ram Truck 1/2 Ton	09-16	4"	n/a	85758 - 85719 Air Ride
Ram Truck 1/2 Ton	09-16	6"	n/a	85759
Ram Truck 1/2 Ton	06-08	0"	n/a	85719
Ram Truck 1/2 Ton	06-08	4"	n/a	85758
Ram Truck 1/2 Ton	06-08	6"	n/a	85769
Ram Truck 1/2 Ton - Mega Cab	06-08	2-3"	85700	85759
Ram Truck 1/2 Ton - Mega Cab	06-08	6"	85750	85761
Ram Truck 1/2 Ton	02-05	4"	85711	85758
Ram Truck 1/2 Ton	02-05	6"	85711	85769
Ram Truck 1/2 Ton	94-01	0-2"	85710	85719
Ram Truck 1/2 Ton	94-01	3"	85700	85759
Ram Truck 1/2 Ton	94-01	5"	85750	85761
Ram Truck 3/4 Ton	03-13 2500 / 03-12 3500	2-3"	85700	85759
Ram Truck 3/4 Ton, 1 Ton	03-13 2500 / 03-12 3500	6"	85750	85761
Ram Truck 3/4 Ton, 1 Ton	03-13 2500 / 03-12 3500	8"	85751	85761
Ram Truck 3/4 Ton	14-16	3"	85700	85755
Ram Truck 3/4 Ton	14-16	4"	85752 - 85700 (Gas)	85757
Ram Truck 3/4 Ton	14-16	6"/5.5" Gas	85752	85756 - 85757 Air Ride
Ram Truck 3/4 Ton	14-16	8"	85754	85763
Ram Truck 1 Ton	13-16	3"/4" Gas	85700	85759
Ram Truck 1 Ton	13-16	4"	85752	85759
Ram Truck 1 Ton	13-16	6"/5.5" Gas	85752	85761
Ram Truck 1 Ton	13-16	8"	85754	85761
Ram Truck 3/4 Ton Power Wagon	05-12	4"	85751	85761
Ram Truck 3/4 Ton	94-02	0-3"	85710	85719
Ram Truck 3/4 Ton-8,800 GVW	94-02	0-3"	85700	85719
Ram Truck 3/4 Ton	94-02	4-5"	85750	85761
"W" Truck 1/2, 3/4 Ton	69-93	5"	85650	85760

FORD 4WD

MODEL	YEAR	LIFT	FRONT SHOCK	REAR SHOCK
Ranger	83-97	4"	85800	85829
Ranger	83-97	6"	85820	85829
Bronco II	82-91	4"	85800	85650
Bronco II	82-91	6"	85820	85829
Expedition	98-02	6"	85804	85628
F150	04-16	0"	n/a	85651
F150	04-16	4"	n/a	85828
F150	04-16	6"	n/a	85760
F150	97-03	6"	85804	85860
F150 - 4WD	80-96	1-2"	85810	85620
F150 - 4WD	80-96	4"	85800	85660
F150 - 4WD	80-96	6"	85820	85660
F150 - 2WD	80-96	1-2"	85810	85620
F150 - 2WD	80-96	4"	85800	85650
F150 - 2WD	80-96	6"	85820	85650
F150	77-79	4"	85820	85850
F150	77-79	6"	85850	85860
F150	73-76	4"	85875	85850
F150	73-76	6"	85877	85860
Bronco	80-96	1-2"	85810	85620
Bronco	80-96	4"	85800	85650
Bronco	80-96	6"	85820	85650
Bronco	78-79	4"	85850/85820**	85650
Bronco	78-79	6"	85860/85850**	85650
F250, F350 Super Duty	2017	0-2"	85710	85717
F250, F350 Super Duty	2017	4"	85700	85718
F250, F350 Super Duty	05-16	0-2"	85710	85660
F250, F350 Super Duty	05-16	4"	85700	85760
F250, F350 Super Duty	05-16	6"	85750	85760
F250, F350 Super Duty	05-16	8"	85751	85765
F250, F350 Super Duty	99-04	0-2"	85620	85660
F250, F350 Super Duty	99-04	2.5"	85650	85660
F250, F350 Super Duty	99-04	4"	85650	85760
F250, F350 Super Duty	99-04	6"	85660	85760
F250, F350 Super Duty	99-04	8"	85660	85765
F250	87-96	4"	85650	85660
F250	80-86	4"	85820	85660
F350	80-97	4"	85650	85660
Excursion	00-05	0-2"	85620	85662
Excursion	00-05	4"	85650	85662
Excursion	00-05	6"	85650	85762
Excursion	00-05	8"	85660	85762
Excursion	00-05	10"	85660	85766

** Order one each front shock w/ staggered mounts.

FORD WITH OF FRONT DUAL SHOCKS 4WD

MODEL	YEAR	LIFT	FRONT SHOCK	FRONT AUXILIARY	REAR SHOCK
F150, Bronco	80-96	1-2"	85810	85800	85620
F150	80-96	4"	85800	85820	85660
F150	80-96	6"	85820	85819	85660
F150	78-79	4"	85820	85819	85850
F150	78-79	6"	85850	85860	85860
Bronco	80-96	4"	85800	85820	85650
Bronco	80-96	6"	85820	85819	85650

Note: Front auxiliary is the shock forward of the front axle.

JEEP 4WD

MODEL	YEAR	LIFT	FRONT SHOCK	REAR SHOCK
CJ5, CJ6, M38A1	53-75	2.5"	85900	85900
CJ5, CJ7, Scrambler	82-86	2.5"	85900	85950
CJ5, CJ7, Scrambler	76-81	2.5"	85910	85950
CJ5, CJ7, Scrambler	82-86	4"	85920	85920
CJ5, CJ7, Scrambler	76-81	4"	85900	85920
J10, J20 Pioneer 4WD	74-86	4"	85875	85920
Wagoneer 4WD Full Size	74-89	4"	85875	85920
Wrangler YJ	87-95	2"	85945	85900
Wrangler YJ	87-95	3.5-4.5"	85955	85950
Wrangler YJ	87-95	5-6"	85660*	85920
Wrangler TJ	97-06	0-1"	85960	85969
Wrangler TJ	97-06	2"	85979	85975
Wrangler TJ	97-06	3"	85965	85980
Wrangler TJ	97-06	4.5"	85967	85976
Wrangler TJ	97-06	6.5"	85962	85974
Wrangler JK	07-17	0"	85710	85980
Wrangler JK	07-17	2"	85710	85951
Wrangler JK	07-17	3"	85700	85951
Wrangler JK	07-17	4.5"	85700	85959
Wrangler JK	07-17	5.5"	85922	85958
Wrangler JK	07-17	6.5"	85952	85958
Cherokee XJ	84-01	0-2"	85979	85972
Cherokee XJ	84-01	3"	85965	85980
Cherokee XJ	84-01	4.5"	85965	85974
Cherokee XJ	84-01	6.5"	85961*	85920
Cherokee XJ	84-01	8.5"	85962	85974
Comanche MJ	86-92	2"	85960	85920
Comanche MJ	86-92	3"	85965	85920
Grand Cherokee ZJ	93-98	0-1"	85979	85900
Grand Cherokee ZJ	93-98	1.75-2"	85979	85950
Grand Cherokee ZJ	93-98	3"	85965	85950
Grand Cherokee ZJ	93-98	4.5"	85965	85920
Grand Cherokee ZJ	93-98	6.5"	85961*	85829
Grand Cherokee WJ	99-04	2"	85979	85970
Grand Cherokee WJ	99-04	4"	85978	85971
Grand Cherokee WK	05-08	4"	n/a	85977
Liberty KJ	02-07	2"	n/a	85968

* Stem eliminator kit #124015 required for installation

** Bar pin eliminator kit #124025 required for installation

SUZUKI & TOYOTA 4WD

MODEL	YEAR	LIFT	FRONT SHOCK	REAR SHOCK
Suzuki Sidekick / Geo Tracker	88-98	4"	n/a	85800
Suzuki Samurai	85-95	4"	85800	85950
Toyota T-100	93-98	4"	85930	85939
Toyota Truck	86-95	4"	85930	85939
Toyota 4Runner	10-16	3"	n/a	85879
Toyota 4Runner	86-89	4"	85930	85939
Toyota FJ Cruiser	07-14	3"	n/a	85879
Toyota Tundra	07-16	0-3"	n/a	85700
Toyota Tundra	07-15	4-7"	n/a	85952
Toyota Tacoma	05-16	2.5-4"	n/a	85954
Toyota Tacoma	05-16	6"	n/a	85953
Toyota Tacoma 4WD	95.5-04	2.5"	n/a	85878

Boots ordered separately



NX² SERIES SHOCK BOOTS

1-3/4" - 2"

COLOR	RETAIL (1/PKG)	BULK
Red.....	098270	098275
Blue.....	098500	098505
Black.....	098520	098525

2-3/8"

COLOR	RETAIL (1/PKG)	BULK
Red.....	099270	099275
Blue.....	099500	099505
Yellow.....	099510	099515
Black.....	099520	099525

Note: All packaged boots include shock ties

NX² SERIES SHOCK ABSORBERS SPECIFICATIONS



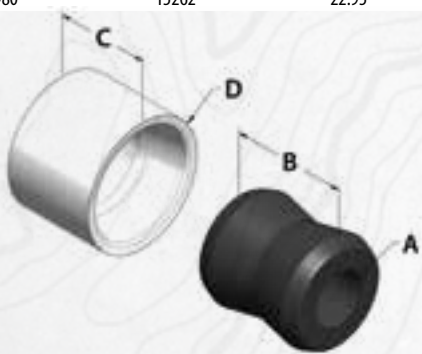
PART #	RAW CYLINDER	EXTENDED LENGTH	COLLAPSED LENGTH	BODY DIAMETER	TOP MOUNT	BOTTOM MOUNT
85600	15263	24.84	14.82	2"	EB1-B	EB1-C
85601	15244	19.50	13.17	2"	EB1-B	EB1-C
85602	15240	21.50	13.75	2-3/8"	S1	Special U Brkt.
85603	15244	19.50	13.17	2"	EB1-B	EB1-B
85604	15276	21.32	14.64	2"	S1	EB1-A
85605	15241	22.18	13.37	2"	S50	EB1-C
85606	15241	22.18	13.37	2"	S50	EB1-D
85608	15251	26.20	15.80	2-3/8"	BP8	EB1-D
85609	15550	30.95	18.17	2-3/8"	BP8	EB1-A
85610	15245	22.95	14.67	2"	EB1-B	EB1-B
85612	15239	16.57	10.99	2-3/8"	S1	Special U Brkt.
85613	15241	21.80	13.40	2"	S50	EB1
85619	15251	25.95	15.42	2"	EB1-B	EB1-B
85620	15247	23.12	14.25	2-3/8"	EB1-A	EB1-A
85628	15251	26.20	15.80	2-3/8"	EB1-A	EB1-A
85629	15251	26.20	15.80	2-3/8"	EB1-A	EB1-D
85639	15248	29.78	17.59	2-3/8"	EB1-A	EB1-D
85650	15251	26.20	15.80	2-3/8"	EB1-A	EB1-A
85651	15250	27.91	16.55	2-3/8"	EB1-A	EB1-A
85660	15248	29.78	17.59	2-3/8"	EB1-A	EB1-A
85662	15248	29.78	17.59	2-3/8"	BP8	EB1-B
85700	15345	25.22	15.22	2-3/8"	S50	EB2
85710	15340	22.50	13.50	2-3/8"	S50	EB2
85711	15276	21.32	14.64	2"	S1	EB1-D
85717	15248	29.80	17.60	2-3/8"	EB1	EB1
85718	15249	33.00	19.25	2-3/8"	EB1	EB1
85719	15251	26.20	15.80	2-3/8"	EB1-D	EB1-D
85750	15371	27.40	16.22	2-3/8"	S50	EB2
85751	15372	30.00	17.24	2-3/8"	S50	EB2
85752	15373	27.45	16.17	2-3/8"	S50	EB2
85755	15325	26.15	15.55	2-3/8"	S1	EB1
85756	15250	27.91	16.55	2-3/8"	Special	EB1-D
85758	15250	27.91	16.55	2-3/8"	EB1-D	EB1-D
85759	15248	29.78	17.59	2-3/8"	EB1-D	EB1-D
85760	15249	33.00	19.27	2-3/8"	EB1-B	EB1-B
85761	15249	33.00	19.27	2-3/8"	EB1-D	EB1-D
85762	15249	33.00	19.27	2-3/8"	BP8	EB1-B
85764	15263	19.30	12.20	2"	Special	EB1
85765	15252	35.50	20.40	2-3/8"	EB1-B	EB1-B
85766	15252	35.50	20.42	2-3/8"	BP8	EB1-B
85769	15550	30.95	18.17	2-3/8"	EB1-D	EB1-D
85800	15346	20.42	12.67	2-3/8"	S1	EB1-A
85804	15241	22.18	13.37	2"	S50	EB1-D
85810	15347	16.91	10.91	2-3/8"	S1	EB1-A
85819	15361	26.42	15.39	2"	S1	EB1-C
85820	15349	22.92	13.92	2-3/8"	S1	EB1-A
85829	15248	29.78	17.59	2-3/8"	EB1-A	EB1-A
85850	15325	26.17	15.55	2-3/8"	S1	EB1-A
85860	15350	29.82	17.57	2-3/8"	S1	EB1-A
85875	15247	23.12	14.25	2-3/8"	EB1-A	EB1-A
85877	15550	30.95	18.17	2-3/8"	EB1-A	EB1-A
85878	15262	22.95	14.67	2"	EB1-C	EB1-C
85879	15345	25.22	15.22	2-3/8"	S50	EB2
85900	15243	21.70	13.42	2"	EB1-A	EB1-A
85920	15266	25.95	15.42	2"	EB1-A	EB1-A
85922	15371	27.40	16.22	2-3/8"	S50	EB2
85930	15346	20.42	12.67	2-3/8"	S1	EB1-A
85939	15251	26.20	15.80	2-3/8"	EB1-C	EB1-C

* Also available in 9500 Series

NX² SERIES SHOCK ABSORBERS SPECIFICATIONS, MOUNTING CODES

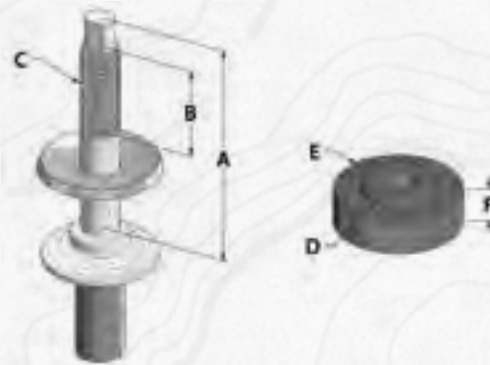
SHOCK ABSORBER SPECIFICATIONS

PART #	RAW CYLINDER	EXTENDED LENGTH	COLLAPSED LENGTH	BODY DIAMETER	TOP MOUNT	BOTTOM MOUNT
85945	15361	26.42	15.39	2"	S1	EB1-B
85950	15262	22.95	14.67	2"	EB1-A	EB1-B
85951	15266	25.95	15.42	2"	BP18	EB1-B
85952	15371	27.40	16.20	2-3/8"	S50	EB2
85953	15350	29.82	17.57	2-3/8"	S1	EB1-A
85955	15362	28.16	16.43	2"	S1	EB1-B
85958	15248	29.78	17.59	2-3/8"	BP18	EB1-B
85959	15250	28.00	16.50	2-3/8"	BP18	EB1-A
85960	15346	20.42	12.67	2-3/8"	S1	BP7
85961	15251	26.20	15.80	2-3/8"	EB1-A	EB1-A
85962	15350	29.82	17.57	2-3/8"	S1	BP7
85965	15348	24.90	14.81	2-3/8"	S1	BP7
85967	15325	26.17	15.55	2-3/8"	S1	BP7
85968	15247	23.12	14.25	2-3/8"	EB1-B	EB1-B
85969	15244	19.50	13.17	2"	BP18	EB1-A
85970	15262	22.95	14.67	2"	EB1-A	EB1-A
85971	15251	26.20	15.80	2-3/8"	EB1-A	EB1-A
85972	15243	21.70	13.42	2"	BP18	EB1-A
85974	15266	25.95	15.42	2"	BP18	EB1-A
85976	15247	23.12	14.25	2-3/8"	BP18	EB1-A
85977	15248	29.80	17.59	2-3/8"	EB1-C	EB1-C
85978	15348	24.68	14.81	2-3/8"	S1	EB1-A
85979	15349	22.92	13.92	2-3/8"	S1	BP7-A
85980	15262	22.95	14.67	2"	BP18	EB1-A



"EB" EYELET BUSHING MOUNTING DIMENSIONS

Code	A	B	C	D (Dia)
EB1-A	5/8"	1-7/16"	15/16"	1-7/16"
EB1-B	5/8"	1-1/2"	15/16"	1-7/16"
EB1-C	3/4"	1-7/16"	15/16"	1-7/16"
EB1-D	3/4"	1-5/8"	15/16"	1-7/16"
EB1-E	5/8"	1-1/4"	15/16"	1-7/16"
EB2	3/4"	1-5/8"	1-1/4"	1-3/4"



"S" STEM BUSHING MOUNTING DIMENSIONS

Code	A	B	C	D	E	F
S1	2-3/8"	1-1/8"	3/8"-24	3/4"	1-1/4"	1/2"
S50	3"	1-1/4"	1/2"-20	15/16"	1-5/8"	9/16"

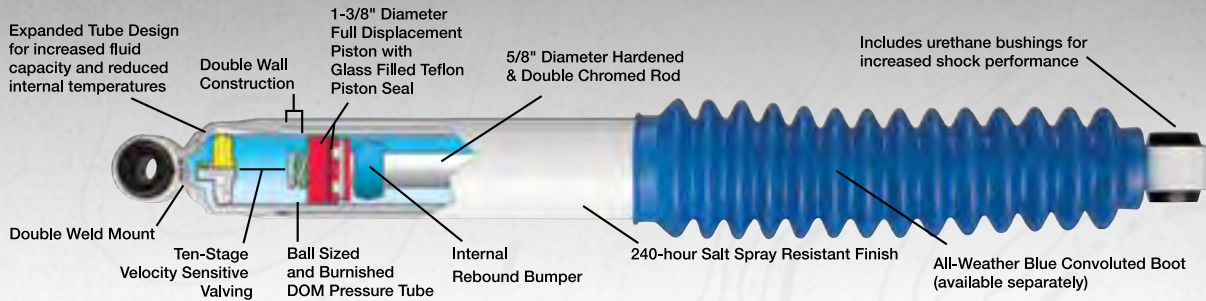


"BP" BAR PIN MOUNTING DIMENSIONS
EB1 WITH BUSHING AND BAR PIN

Code	Style	A	B	C	D
BP7	Closed	3-1/4"	2-1/2"	3/8"	7/16"
BP8	Closed	3-1/2"	2-7/8"	3/8"	7/16"
BP18	Open	3-3/4"	3-1/8"	3/8"	-

CHEVROLET/GMC
DODGE
FORD
JEEP
SUZUKI
TOYOTA
PUSH-LOK
SHOCKS/STEERING STABILIZERS
ACCESSORIES
APPAREL & PROMOTIONAL
PRODUCT SPECS
VEHICLE SPECS

5500 SERIES SHOCK ABSORBERS



Correct Application Valving Technology is based on extensive shock dyno and ride control research offering the most application specific part numbers available for on and off-road light trucks and SUV's.

THIS RESULTS IN:

- Increased stability for improved handling
- Longer front end and tire life
- Less nose dive on severe braking
- Less squat on hard acceleration
- Smoother ride—control without harshness

CHEVROLET/GMC 4WD

MODEL	YEAR	LIFT	FRONT SHOCK	REAR SHOCK	NOTES
Colorado/Canyon	15-16	5.5"	n/a	55758	
Truck K1500/C1500	07-17	0"	n/a	55719	
Truck K1500/C1500	07-17	4"	n/a	55758	
Truck K1500/C1500	07-17	6"	n/a	55759	
Truck K1500	99-06	0"	55612	55719	
Truck K1500	99-06	4.5"	55602	55758	
Truck K1500 (Non HD)	99-06	6"	55602	55759	
Truck C1500 (2WD-Non HD)	99-06	6"	55604	55759	
Truck K2500 HD	11-16	6.5"	55613	55769	
Truck K2500 HD & Non-HD	01-10	7"	55606	55761	
Truck K2500 HD & Non-HD	01-10	4.5"	55605	55759	
Truck C2500 HD (2WD)	01-10	6"	55605	55761	
Hummer H2	03-08	6"	55605	55761	
Truck K1500-3500	88-98	0-3"	55601	55608	2
Truck K1500 6 lug	88-98	6"	55600	55609	
Truck K10, 20, 30	73-87	2.5"	55620	55629	
Truck K10, 20, 30	73-87	4"	55620	55639	
Truck K10, 20, 30	73-87	6-8"	55650	55639	
Truck K10, 20, 30	69-72	4"	55620	55660	
Tahoe, Yukon, Suburban, Avalanche, 1500	07-13	0-3"	n/a	55719	
Tahoe, Yukon, Suburban, Avalanche, 1500	07-13	6"	n/a	55759	
Tahoe, Yukon, Suburban, Avalanche, 1500	00-06	4"	55602	55758	
Tahoe, Yukon, Suburban, Avalanche, 1500	00-06	6"	55602	55759	
Suburban, Avalanche 2500	01-06	7"	55606	55761	
Tahoe, Yukon, Suburban 1500, 2500 6 lug	92-98	0-3"	55601	55608	
Tahoe, Yukon, Suburban 1500, 2500 6 lug	92-98	6"	55600	55609	
Blazer, Jimmy K5, Suburban 10, 20	73-91	2.5"	55620	55629	
Blazer, Jimmy K5, Suburban 10, 20	73-91	4"	55620	55639	
Blazer, Jimmy K5, Suburban 10, 20	73-91	6-8"	55650	55639	
Trailblazer	02-09	2"	n/a	55619	
S-Series Blazer, Truck, ZR2	83-05	0-3"	55603	55608	
S-Series Blazer, Truck, ZR2	83-05	5"	55610	55608	1

Notes

1. With BDS Suspension system

2. These applications are for newer body style K3500 with torsion bar front suspension.

CHEVROLET/GMC WITH OE FRONT DUAL SHOCKS 4WD

MODEL	YEAR	LIFT	FRONT SHOCK	FRONT AUXILIARY	REAR SHOCK
Truck K10, 20, 30	81-87	2.5"	55620	55620	55629
Truck K10, 20, 30	81-87	4"	55620	55650	55639
Truck K10, 20, 30	81-87	6"	55650	55650	55639
Truck K10, 20, 30	81-87	8"	55650	55660	55639
Blazer, Jimmy K5, Suburban 10, 20	81-91	2.5"	55620	55620	55629
Blazer, Jimmy K5, Suburban 10, 20	81-91	4"	55620	55650	55639
Blazer, Jimmy K5, Suburban 10, 20	81-91	6"	55650	55650	55639
Blazer, Jimmy K5, Suburban 10, 20	81-91	8"	55650	55660	55639

Note: The front auxiliary is the inner long shock.

DODGE 4WD

MODEL	YEAR	LIFT	FRONT SHOCK	REAR SHOCK
Ram Truck 1/2 Ton	09-16	4"	n/a	55758
Ram Truck 1/2 Ton	09-16	6"	n/a	55759
Ram Truck 1/2 Ton	06-08	0"	n/a	55719
Ram Truck 1/2 Ton	06-08	4"	n/a	55758
Ram Truck 1/2 Ton	06-08	6"	n/a	55769
Ram Truck 1/2 Ton - Mega Cab	06-08	2-3"	55700	55759
Ram Truck 1/2 Ton - Mega Cab	06-08	6"	55750	55761
Ram Truck 1/2 Ton	02-05	6"	55711	55769
Ram Truck 1/2 Ton	94-01	0-2"	55710	55719
Ram Truck 1/2 Ton	94-01	3"	55700	55759
Ram Truck 1/2 Ton	94-01	5"	55750	55761
Ram Truck 3/4 Ton	03-13 (2500) 03-12 (3500)	2-3"	55700	55759
Ram Truck 3/4 Ton, 1 Ton	03-13 (2500) 03-12 (3500)	6"	55750	55761
Ram Truck 3/4 Ton, 1 Ton	03-13 (2500) 03-12 (3500)	8"	55751	55761
Ram Truck 3/4 Ton	14-16	0-2"	55713	55705
Ram Truck 3/4 Ton	14-16	3"	55700	55705
Ram Truck 3/4 Ton	14-16	4"	55752	55757
Ram Truck 3/4 Ton	14-16	6"	55752	55756
Ram Truck 1 Ton	13-16	0-2"	55713	55759
Ram Truck 1 Ton	13-16	3"	55700	55759
Ram Truck 1 Ton	13-16	4"	55752	55759
Ram Truck 1 Ton	13-16	6"	55752	55761
Ram Truck 1 Ton	13-16	8"	55754	55761
Ram Truck 3/4 Ton Power Wagon	05-12	4"	55751	55761
Ram Truck 3/4 Ton	94-02	0-2"	55710	55719
Ram Truck 3/4 Ton-8,800 GVW	94-02	0-2"	55700	55719
Ram Truck 3/4 Ton	94-02	4-5"	55750	55761
"W" Truck 1/2, 3/4 Ton	69-93	5"	55650	55760

FORD 4WD

MODEL	YEAR	LIFT	FRONT SHOCK	REAR SHOCK
Ranger	83-97	4"	55800	55829
Ranger	83-97	6"	55820	55829
Bronco II	82-91	4"	55800	55650
Bronco II	82-91	6"	55820	55829
Expedition	98-02	6"	55804	55628
F150	04-16	0"	n/a	55651
F150	04-16	4"	n/a	55828
F150	04-16	6"	n/a	55760
F150	97-03	6"	55804	55860
F150 - 4WD	80-96	1-2"	55810	55620
F150 - 4WD	80-96	4"	55800	55660
F150 - 4WD	80-96	6"	55820	55660
F150 - 2WD	80-96	1-2"	55810	55620
F150 - 2WD	80-96	4"	55800	55650
F150 - 2WD	80-96	6"	55820	55650
F150	77-79	4"	55820	55850
F150	77-79	6"	55850	55860
F150	73-76	4"	55875	55850
F150	73-76	6"	55877	55860
Bronco	80-96	1-2"	55810	55620
Bronco	80-96	4"	55800	55650
Bronco	80-96	6"	55820	55650
Bronco	78-79	4"	55850/55820**	55650
Bronco	78-79	6"	55860/55850**	55650
F250, F350 Super Duty	05-16	0-2"	55710	55660
F250, F350 Super Duty	05-16	2.5"	55713	55760
F250, F350 Super Duty	05-16	4"	55700	55760
F250, F350 Super Duty	05-16	6"	55750	55760
F250, F350 Super Duty	05-16	8"	55751	55765
F250, F350 Super Duty	99-04	0-2"	55620	55660
F250, F350 Super Duty	99-04	2.5"	55650	55660
F250, F350 Super Duty	99-04	4"	55650	55760
F250, F350 Super Duty	99-04	6"	55660	55760
F250, F350 Super Duty	99-04	8"	55660	55765
F250	87-96	4"	55650	55660
F250	80-86	4"	55820	55660
F350	80-97	4"	55650	55660
Excursion	00-05	0-2"	55620	55662
Excursion	00-05	4"	55650	55762
Excursion	00-05	6"	55650	55762
Excursion	00-05	8"	55660	55762
Excursion	00-05	10"	55660	55766

** Order one each front shock w/ staggered mounts.

FORD WITH OE FRONT DUAL SHOCKS 4WD

MODEL	YEAR	LIFT	FRONT SHOCK	FRONT AUXILIARY	REAR SHOCK
F150, Bronco	80-96	1-2"	55810	55800	55620
F150	80-96	4"	55800	55820	55660
F150	80-96	6"	55820	55819	55660
F150	78-79	4"	55820	55819	55850
F150	78-79	6"	55850	55860	55860
Bronco	80-96	4"	55800	55820	55650
Bronco	80-96	6"	55820	55819	55650

Note: Front auxiliary is the shock forward of the front axle.

JEEP 4WD

MODEL	YEAR	LIFT	FRONT SHOCK	REAR SHOCK
CJ5, CJ6, M38A1	53-75	2.5"	55900	55900
CJ5, CJ7, Scrambler	82-86	2.5"	55900	55950
CJ5, CJ7, Scrambler	76-81	2.5"	55910	55950
CJ5, CJ7, Scrambler	82-86	4"	55920	55920
CJ5, CJ7, Scrambler	76-81	4"	55900	55920
J10, J20 Pioneer 4WD	74-86	4"	55875	55920
Wagoneer 4WD Full Size	74-89	4"	55875	55920
Wrangler YJ	87-95	2"	55945	55900
Wrangler YJ	87-95	3.5-4.5"	55955	55950
Wrangler YJ	87-95	5-6"	55660*	55920
Wrangler TJ	97-06	0-1"	55960	55969
Wrangler TJ	97-06	2"	55979	55975
Wrangler TJ	97-06	3"	55965	55980
Wrangler TJ	97-06	4.5"	55967	55976
Wrangler TJ	97-06	6.5"	55962	55974
Wrangler JK	07-17	0"	55710	55980
Wrangler JK	07-17	2"	55710	55951
Wrangler JK	07-17	3"	55700	55951
Wrangler JK	07-17	4.5"	55700	55959
Wrangler JK	07-17	5.5"	55922	55958
Wrangler JK	07-17	6.5"	55952	55958
Cherokee XJ	84-01	0-2"	55979	55972
Cherokee XJ	84-01	3"	55965	55980
Cherokee XJ	84-01	4.5"	55965	55974
Cherokee XJ	84-01	6.5"	55961*	55920
Comanche MJ	86-92	2"	55960	55920
Comanche MJ	86-92	3"	55965	55920
Grand Cherokee ZJ	93-98	0-1"	55979	55900
Grand Cherokee ZJ	93-98	1.75-2"	55979	55950
Grand Cherokee ZJ	93-98	3"	55965	55950
Grand Cherokee ZJ	93-98	4.5"	55965	55920
Grand Cherokee ZJ	93-98	6.5"	55961*	55829
Grand Cherokee WJ	99-04	2"	55979	55970
Grand Cherokee WJ	99-04	4"	55978	55971
Grand Cherokee WK	05-08	4"	n/a	55977
Liberty KJ	02-07	2"	n/a	55968

* Stem eliminator kit #124015 required for installation
 ** Bar pin eliminator kit #124025 required for installation

SUZUKI & TOYOTA 4WD

MODEL	YEAR	LIFT	FRONT SHOCK	REAR SHOCK
Suzuki Sidekick / Geo Tracker	88-98	4"	n/a	55800
Suzuki Samurai	85-95	4"	55800	55950
Toyota Tacoma 4WD	95.5-04	2.5"	n/a	55878
Toyota T-100	93-98	4"	55930	55939
Toyota Truck	86-95	4"	55930	55939
Toyota 4Runner	86-89	4"	55930	55939
Toyota FJ Cruiser	07-15	3"	n/a	55879
Toyota Tundra	07-15	0"	n/a	55700
Toyota Tundra	07-15	4"	n/a	55952
Toyota Tacoma	05-15	3"	n/a	55954
Toyota Tacoma	05-15	4"	n/a	55953

Boots ordered separately



5500 SERIES SHOCK BOOTS

1-3/4" - 2"

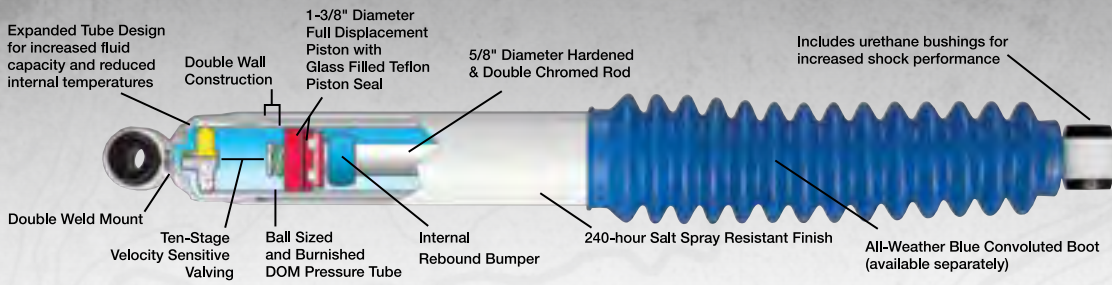
COLOR	RETAIL (1/PKG)	BULK
Red.....	098270	098275
Blue.....	098500	098505
Black.....	098520	098525

2-3/8"

COLOR	RETAIL (1/PKG)	BULK
Red.....	099270	099275
Blue.....	099500	099505
Yellow.....	099510	099515
Black.....	099520	099525

Note: All packaged boots include shock ties

5500 SERIES SHOCK ABSORBERS SPECIFICATIONS



PART #	RAW CYLINDER	EXTENDED LENGTH	COLLAPSED LENGTH	BODY DIAMETER	TOP MOUNT	BOTTOM MOUNT
55600	5263	24.84	14.82	2"	EB1-B	EB1-C
55601	5244	19.50	13.17	2"	EB1-B	EB1-C
55602	5240	21.50	13.75	2-3/8"	S1	Special U Brkt.
55603	5244	19.50	13.17	2"	EB1-B	EB1-B
55604	5276	21.32	14.64	2"	S1	EB1-A
55605	5241	22.18	13.37	2"	S50	EB1-C
55606	5241	22.18	13.37	2"	S50	EB1-D
55608	5251	26.20	15.80	2-3/8"	BP8	EB1-D
55609	5550	30.95	18.17	2-3/8"	BP8	EB1-A
55610	5245	22.95	14.67	2"	EB1-B	EB1-B
55612	5239	16.57	10.99	2-3/8"	S1	Special U Brkt.
55613	5241	21.80	13.40	2"	S50	EB1
55619	5251	25.95	15.42	2"	EB1-B	EB1-B
55620	5247	23.12	14.25	2-3/8"	EB1-A	EB1-A
55628	5251	26.20	15.80	2-3/8"	EB1-A	EB1-A
55629	5251	26.20	15.80	2-3/8"	EB1-A	EB1-D
55639	5248	29.78	17.59	2-3/8"	EB1-A	EB1-D
55650	5251	26.20	15.80	2-3/8"	EB1-A	EB1-A
55651	5250	27.91	16.55	2-3/8"	EB1-A	EB1-A
55660	5248	29.78	17.59	2-3/8"	EB1-A	EB1-A
55662	5248	29.78	17.59	2-3/8"	BP8	EB1-B
55700	5345	25.22	15.22	2-3/8"	S50	EB2
55710	5340	22.50	13.50	2-3/8"	S50	EB2
55711	5276	21.32	14.64	2"	S1	EB1-D
55713	5342	23.5	14.20	2-3/8"	S50	EB2
55719	5251	26.20	15.80	2-3/8"	EB1-D	EB1-D
55750	5371	27.40	16.22	2-3/8"	S50	EB2
55751	5372	30.00	17.24	2-3/8"	S50	EB2
55752	5373	27.45	16.17	2-3/8"	S50	EB2
55755	5325	26.15	15.55	2-3/8"	S1	EB1
55756	5250	27.91	16.55	2-3/8"	Special	EB1-D
55758	5250	27.91	16.55	2-3/8"	EB1-D	EB1-D
55759	5248	29.78	17.59	2-3/8"	EB1-D	EB1-D
55760	5249	33.00	19.27	2-3/8"	EB1-B	EB1-B
55761	5249	33.00	19.27	2-3/8"	EB1-D	EB1-D
55762	5249	33.00	19.27	2-3/8"	BP8	EB1-B
55765	5252	35.50	20.40	2-3/8"	EB1-B	EB1-B
55766	5252	35.50	20.42	2-3/8"	BP8	EB1-B
55769	5550	30.95	18.17	2-3/8"	EB1-D	EB1-D
55800	5346	20.42	12.67	2-3/8"	S1	EB1-A
55804	5241	22.18	13.37	2"	S50	EB1-D
55810	5347	16.91	10.91	2-3/8"	S1	EB1-A
55819	5361	26.42	15.39	2"	S1	EB1-C
55820	5349	22.92	13.92	2-3/8"	S1	EB1-A
55829	5248	29.78	17.59	2-3/8"	EB1-A	EB1-A
55850	5325	26.17	15.55	2-3/8"	S1	EB1-A
55860	5350	29.82	17.57	2-3/8"	S1	EB1-A
55875	5247	23.12	14.25	2-3/8"	EB1-A	EB1-A
55877	5550	30.95	18.17	2-3/8"	EB1-A	EB1-A
55878	5262	22.95	14.67	2"	EB1-C	EB1-C
55879	5345	25.22	15.22	2-3/8"	S50	EB2
55900	5243	21.70	13.42	2"	EB1-A	EB1-A
55920	5266	25.95	15.42	2"	EB1-A	EB1-A
55922	5371	27.40	16.22	2-3/8"	S50	EB2
55930	5346	20.42	12.67	2-3/8"	S1	EB1-A
55939	5251	26.20	15.80	2-3/8"	EB1-C	EB1-C

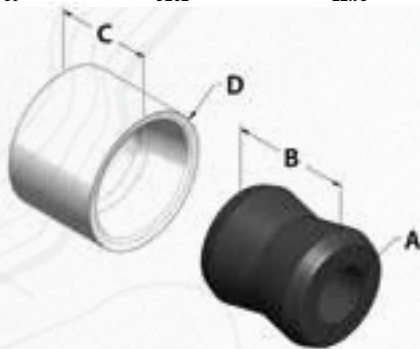
* Also available in 9500 Series

CHEVROLET/GMC
DODGE
FORD
JEEP
SUZUKI
TOYOTA
POSI-LOK
SHOCKS/STEERING STABILIZERS
ACCESSORIES
APPAREL & PROMOTIONAL
PRODUCT SPECS
VEHICLE SPECS

5500 SERIES SHOCK ABSORBERS SPECIFICATIONS, MOUNTING CODES

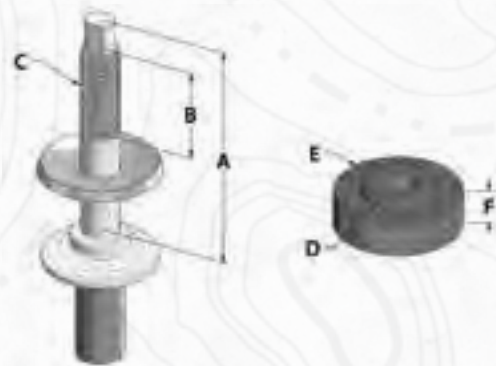
SHOCK ABSORBER SPECIFICATIONS

PART #	RAW CYLINDER	EXTENDED LENGTH	COLLAPSED LENGTH	BODY DIAMETER	TOP MOUNT	BOTTOM MOUNT
55945	5361	26.42	15.39	2"	S1	EB1-B
55950	5262	22.95	14.67	2"	EB1-A	EB1-B
55951	5266	25.95	15.42	2"	BP18	EB1-B
55952	5371	27.40	16.20	2-3/8"	S50	EB2
55953	5350	29.82	17.57	2-3/8"	S1	EB1-A
55955	5362	28.16	16.43	2"	S1	EB1-B
55958	5248	29.78	17.59	2-3/8"	BP18	EB1-B
55959	5250	28.00	16.50	2-3/8"	BP18	EB1-A
55960	5346	20.42	12.67	2-3/8"	S1	BP7
55961	5251	26.20	15.80	2-3/8"	EB1-A	EB1-A
55962	5350	29.82	17.57	2-3/8"	S1	BP7
55965	5348	24.90	14.81	2-3/8"	S1	BP7
55967	5325	26.17	15.55	2-3/8"	S1	BP7
55968	5247	23.12	14.25	2-3/8"	EB1-B	EB1-B
55969	5244	19.50	13.17	2"	BP18	EB1-A
55970	5262	22.95	14.67	2"	EB1-A	EB1-A
55971	5251	26.20	15.80	2-3/8"	EB1-A	EB1-A
55972	5243	21.70	13.42	2"	BP18	EB1-A
55974	5266	25.95	15.42	2"	BP18	EB1-A
55976	5247	23.12	14.25	2-3/8"	BP18	EB1-A
55977	5248	29.80	17.59	2-3/8"	EB1-C	EB1-C
55978	5348	24.68	14.81	2-3/8"	S1	EB1-A
55979	5349	22.92	13.92	2-3/8"	S1	BP7-A
55980	5262	22.95	14.67	2"	BP18	EB1-A



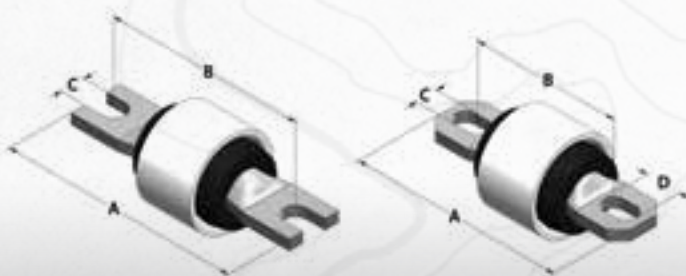
"EB" EYELET BUSHING MOUNTING DIMENSIONS

Code	A	B	C	D (Dia)
EB1-A	5/8"	1-7/16"	15/16"	1-7/16"
EB1-B	5/8"	1-1/2"	15/16"	1-7/16"
EB1-C	3/4"	1-7/16"	15/16"	1-7/16"
EB1-D	3/4"	1-5/8"	15/16"	1-7/16"
EB1-E	5/8"	1-1/4"	15/16"	1-7/16"
EB2	3/4"	1-5/8"	1-1/4"	1-3/4"



"S" STEM BUSHING MOUNTING DIMENSIONS

Code	A	B	C	D	E	F
S1	2-3/8"	1-1/8"	3/8"-24	3/4"	1-1/4"	1/2"
S50	3"	1-1/4"	1/2"-20	15/16"	1-5/8"	9/16"



**"BP" BAR PIN MOUNTING DIMENSIONS
EB1 WITH BUSHING AND BAR PIN**

Code	Style	A	B	C	D
BP7	Closed	3-1/4"	2-1/2"	3/8"	7/16"
BP8	Closed	3-1/2"	2-7/8"	3/8"	7/16"
BP18	Open	3-3/4"	3-1/8"	3/8"	-

NX² SERIES STEERING STABILIZER MOUNTING SYSTEMS



FEATURES INCLUDE:

- Heavy-duty gusseted construction
- Durable black finish for long life
- All hardware and instructions included
- Single and dual systems available for most lifted applications

INSTALLATION OF COMPLETE SYSTEM WILL...

- Enhance vehicle control with reduced steering shimmy and bumpsteer
- Improve tire wear and front-end component life
- Lessen side-to-side motion caused by wide tires and road conditions

CHEVROLET/GMC 4WD

MODEL	YEAR	SINGLE		DUAL		NOTES
		CYLINDER	BRACKET KIT	CYLINDER*	BRACKET KIT	
Truck Silverado/Sierra 1/2 Ton	99-06	85402	55327			
Truck Silverado/Sierra 1/2 Ton	99-06				55354	3,7
Truck K2500 HD 2WD & 4WD	2016	85430	55379			18,19
Truck K2500 HD 2WD & 4WD	11-15	85425				
Truck K2500 HD – OE Replacement	01-10	85411				
Truck K2500 HD 2WD & 4WD	01-10			85423	55363	3,7
Suburban, Avalanche 2500	01-06	55411				
Suburban, Avalanche 2500	01-06			85423	55363	3,7
Truck K1500, K2500 – w/ OE Stabilizer	88-98	85401	55328			
Truck K1500, K2500 – w/o OE Stabilizer	88-98	85401	55326			9
Truck K1500, K2500	88-98				55362	1,2
Truck 1/2, 3/4, 1 ton - w/ OE Stabilizer	73-87	85402	55310	85405	55374	3,6,8
Truck 1/2, 3/4, 1 ton – OE Replacement	73-87	85404		85402	55361	2,6,8
Truck 1/2, 3/4, 1 ton – w/ 3" diameter axle tube	69-72	85402	55310			
Truck S-Series & ZR2	95-04					4
Truck S-Series & ZR2 – OE Replacement	83-04	85401				
Truck S-Series – w/o OE Stabilizer	83-97	85401	55326			9
Tahoe, Yukon, Suburban 1500	00-06	85402	55327			
Tahoe, Yukon, Suburban 1500	00-06				55354	3,7
Tahoe, Yukon, Suburban – w/ OE Stabilizer	92-98	85401	55328			
Tahoe, Yukon, Suburban – w/o OE Stabilizer	92-98	85401	55326			9
Tahoe, Yukon, Suburban	92-98				55362	1,3
Blazer, Jimmy, Suburban – Stacked	69-91	85404		85402	55361	2,6,8
Blazer, Jimmy, Suburban – End-to-End	69-91	85402	55310	85405	55374	3,6,8
Blazer, Jimmy S-Models & ZR2	95-04					4
Blazer, Jimmy S-Models & ZR2 – OE Replacement	83-94	85401				
Blazer, Jimmy S-Models – w/o OE Stabilizer	83-94	85401	55326			9

DODGE 4WD

MODEL	YEAR	SINGLE		DUAL		NOTES
		CYLINDER	BRACKET KIT	CYLINDER*	BRACKET KIT	
Truck Ram 1500	06-12	85419	55311	85419	55311	11
Truck Ram 1500 - Mega Cab - Y-Style Steering	06-08	85424		85405	55357	3,8
Truck Ram 1500	02-05	85419	55311	85419	55311	11
Truck Ram 1500 – OE Replacement	2001	85406		85429	55377	3,6,8
Truck Ram 1500 – OE Replacement	94-00	85417		85429	55377	3,6,8
Truck Ram 2500 – OE Replacement	94-00	85417		85429	55377	3,6,8
Truck Ram 2500, 3500	01-02	85406		85429	55377	3,6,8
Truck Ram 2500, 3500 - Y-Style Steering	03-08	85424		85405	55357	3,8
Truck Ram 2500, 3500 - T-Style Steering – OE 4-Link Trucks	09-13	85422		85422	55371	
Truck Ram 2500, 3500 OE Radius Arm Trucks	13-16	85427		85422	55370	
Ramcharger, Trailduster	60-93		55310	85402	55361	2,6,8
Truck 1/2, 3/4, 1 Ton	60-93		55310	85402	55361	2,6,8

FORD 4WD

MODEL	YEAR	SINGLE		DUAL		NOTES
		CYLINDER	BRACKET KIT	CYLINDER*	BRACKET KIT	
Ranger	83-97	85402	55337	85402	55324	2,8,10
Bronco II	83-90	85402	55337	85402	55324	2,8,10
F150 4WD	97-03	85412				7
Expedition	98-02	85412				7
F150 4WD w/ BDS Replacement Strut Kits	04-08	85402	55338	85402	55339	11
F150 4WD w/ BDS Strut Spacer Kits	04-08	85402	55312	85402	55367	11
F150 – Excluding Quad Shocks	80-96	85402	55337	85402	55325	2,8
F150 – w/ Quad Shocks	80-96	85402	55306	85402	55365	3,8
F100, F150 – OE Replacement	70-79					
F100, F150 – w/o anti-sway bar	70-79			85402	55361	2,5,8
Explorer	90-94	85402	55337			
Bronco – Excluding Quad Shocks	80-96	85402	55337	85402	55325	2,8
Bronco – w/ Quad Shocks	80-96	85402	55306	85402	55365	3,8
Bronco – OE Replacement	70-79					
Bronco – w/o anti-sway bar	78-79			85402	55361	2,8
Bronco – OE Replacement	66-69	85404				
F250, F350 Super Duty	05-10	85415	55309	85405	55358	3, 12
F250, F350 Super Duty	11-16	85415	55368	85405	55358	3, 12
F250, F350 Super Duty, Excursion – OE Replacement	99-04	85428	55372	85428	55373	3,8
F250, F350 – Excluding Monobeam F350	80-96	85402	55337			
F350 – w/ Monobeam	86-96	85402	55310			3,6,8

Boots ordered separately

CHEVROLET/GMC
DODGE
FORD
JEEP
SUZUKI
TOYOTA
POSI-LOK
SHOCKS/STEERING STABILIZERS
ACCESSORIES
APPAREL & PROMOTIONAL
PRODUCT SPECS
VEHICLE SPECS

JEEP

MODEL	YEAR	SINGLE		DUAL		NOTES
		CYLINDER	BRACKET KIT	CYLINDER*	BRACKET KIT	
Wrangler JK	07-17	85421	55376			14
Wrangler JK	07-17	85401		85405	55378	13, 17
Wrangler TJ – OE Replacement	97-06	85407		85405	55375	3, 8
Wrangler YJ – OE Replacement	87-96	85407		85402	55353	2, 8
CJ5, CJ7, CJ8 – OE Replacement	76-86					
CJ2A, CJ3A, CJ3B, CJ5, CJ6, CJ7, CJ8	42-86	85402	55307**			
MB, M38, M38A1	41-75	85402	55307**			
Grand Cherokee ZJ – OE Replacement	93-98	85401		85405	55375	3, 8, 16
Grand Cherokee WJ – OE Replacement	99-04	85409		85426	55366	3, 8
Cherokee XJ – OE Replacement	84-01	85401		85405	55375	8
Comanche MJ – OE Replacement	86-92	85401				
Truck, Cherokee, Wagoneer – OE Replacement	74-91	85404				

SUZUKI

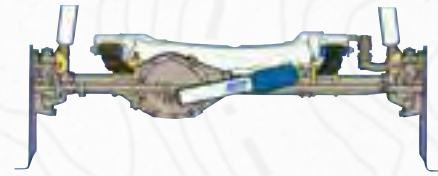
MODEL	YEAR	SINGLE		DUAL		NOTES
		CYLINDER	BRACKET KIT	CYLINDER*	BRACKET KIT	
Samurai	85-95					

* When ordering dual stabilizer kit, you must order two (2) cylinders and one (1) bracket kit.
 ** Will not fit with factory sway bar

Boots ordered separately

Notes

- Dual stabilizer kit only works in combination with the 6" BDS suspension system.
- Dual stabilizer kit is a stacked design (over/under).
- Dual stabilizer kit is an end-to-end design.
- 55414 stabilizer kit only works in combination with the 5" BDS suspension system.
- 1976-77 models with power steering and inverted "Y" steering linkage must be converted to a 1978-79 inverted "T" style in order to install dual steering stabilizers.
- For 3" axle tube diameter – some ¾, 1 ton trucks may have larger axles, measure first
- Will not work with suspension lifts that use a modified steering link and will not fit stock height vehicles.
- Dual stabilizer kit will work on stock height applications.
- Single bracket kit 55326 will work on stock height only.
- Will not work with vehicles equipped with factory front sway bar.
- Single and dual kits will only work in combination with the 4"-6" BDS Suspension systems.
- Dual system will not work for vehicles with 2" of lift or less.
- For use with BDS kits 4" of lift or higher.
- For use with 3" of lift or less.
- For 3" axle tube diameter – some ¾, 1 ton trucks may have larger axles, measure first
- Will not fit V8 Grand Cherokee ZJ models due to larger tie rod diameter.
- #55378 bracket requires front 2" bump stop extensions
- Designed for models that are not equipped with steering stabilizer mount from the factory
- Works for all stock and lifted applications where the center link remains in the stock location.



NX² SERIES STEERING STABILIZER SPECIFICATIONS

PART #	CYLINDER	EXTENDED	COLLAPSED	CYLINDER DIAMETER	BODY MOUNT	ROD MOUNT	AVAILABLE IN 9500
55401	8623	19.26	12.17	2"	EB1-A	EB1-A	
55402	8402	20.11	11.86	2-3/8"	S1	S1	
55403	8622	22.36	12.99	2"	S1	S1	
55404	8621	23.92	14.30	2"	EB1-A	EB1-A	X
55405	8621	23.92	14.30	2"	EB1-A	EB1-A	X
55406	8621	23.92	14.30	2"	EB1-A	EB1-A	X
55407	8624	19.75	12.13	1-3/4"	EB1-A	EB1-A	X
55408	8621	23.92	14.30	2"	EB1-A	EB1-A	X
55409	8624	19.75	12.13	1-3/4"	EB1-A	EB1-A	X
55410	8620	17.06	10.48	1-3/4"	S1	EB1-A	
55411	8623	19.26	12.17	2"	EB1-A	EB1-A	
55412	8623	19.26	12.17	2"	EB1-A	EB1-A	
55414	8620	17.06	10.48	1-3/4"	S1	EB1-A	
55415	8621	23.92	14.30	2"	EB1-A	EB1-A	X
55405	8621	23.92	14.30	2"	EB1-A	EB1-A	X
55417	8621	23.92	14.30	2"	EB1-A	EB1-A	X
55419	8623	19.26	12.17	2"	EB1-A	EB1-A	
55420	8623	19.26	12.17	2"	EB1-A	EB1-A	
55421	8624	19.26	12.17	2"	EB1-A	EB1-A	X
55422	8621	23.92	14.3	2"	EB1-A	EB1-A	X
55423	8624	19.75	12.13	1-3/4"	EB1-A	EB1-A	
55424	8621	23.92	14.30	2"	EB1-A	EB1-A	X
55425	8621	23.92	14.30	2"	EB1-A	EB1-A	X
55426	8624	19.75	12.13	1-3/4"	EB1-A	EB1-A	X
55427	8621	23.92	14.3	2"	EB1-A	EB1-B	X

CHEVROLET/GMC
 DODGE
 FORD
 JEEP
 SUZUKI
 TOYOTA
 PCSI-LOK
 SHOCKS/STEERING STABILIZERS
 ACCESSORIES
 APPAREL & PROMOTIONAL
 PRODUCT SPECS
 VEHICLE SPECS

5500 SERIES STEERING STABILIZER MOUNTING SYSTEMS



FEATURES INCLUDE:

- Heavy-duty gusseted construction
- Durable black finish for long life
- All hardware and instructions included
- Single and dual systems available for most lifted applications

INSTALLATION OF COMPLETE SYSTEM WILL...

- Enhance vehicle control with reduced steering shimmy and bumpsteer
- Improve tire wear and front-end component life
- Lessen side-to-side motion caused by wide tires and road conditions

CHEVROLET/GMC 4WD

MODEL	YEAR	SINGLE		DUAL		NOTES
		CYLINDER	BRACKET KIT	CYLINDER*	BRACKET KIT	
Truck Silverado/Sierra 1/2 Ton	99-06	55402	55327			
Truck Silverado/Sierra 1/2 Ton	99-06			55410	55354	3,7
Truck K2500 HD 2WD & 4WD	11-15	55425				
Truck K2500 HD – OE Replacement	01-10	55411				
Truck K2500 HD 2WD & 4WD	01-10			55423	55363	3,7
Suburban, Avalanche 2500	01-06	55411				
Suburban, Avalanche 2500	01-06			55423	55363	3,7
Truck K1500, K2500 – w/ OE Stabilizer	88-98	55401	55328			
Truck K1500, K2500 – w/o OE Stabilizer	88-98	55401	55326			9
Truck K1500, K2500	88-98			55410	55362	1,2
Truck 1/2, 3/4, 1 ton – w/ OE Stabilizer	73-87	55402	55310	55405	55374	3,6,8
Truck 1/2, 3/4, 1 ton – OE Replacement	73-87	55404		55402	55361	2,6,8
Truck 1/2, 3/4, 1 ton – w/ 3" diameter axle tube	69-72	55402	55310			
Truck S-Series & ZR2	95-04	55414				4
Truck S-Series & ZR2 – OE Replacement	83-04	55401				
Truck S-Series – w/o OE Stabilizer	83-97	55401	55326			9
Tahoe, Yukon, Suburban 1500	00-06	55402	55327			
Tahoe, Yukon, Suburban 1500	00-06			55410	55354	3,7
Tahoe, Yukon, Suburban – w/ OE Stabilizer	92-98	55401	55328			
Tahoe, Yukon, Suburban – w/o OE Stabilizer	92-98	55401	55326			9
Tahoe, Yukon, Suburban	92-98			55410	55362	1,3
Blazer, Jimmy, Suburban – Stacked	69-91	55404		55402	55361	2,6,8
Blazer, Jimmy, Suburban – End-to-End	69-91	55402	55310	55405	55374	3,6,8
Blazer, Jimmy S-Models & ZR2	95-04	55414				4
Blazer, Jimmy S-Models & ZR2 – OE Replacement	83-94	55401				
Blazer, Jimmy S-Models – w/o OE Stabilizer	83-94	55401	55326			9

DODGE 4WD

MODEL	YEAR	SINGLE		DUAL		NOTES
		CYLINDER	BRACKET KIT	CYLINDER*	BRACKET KIT	
Truck Ram 1500	06-12	55419	55311	55419	55311	11
Truck Ram 1500 - Mega Cab - Y-Style Steering	06-08	55424		55405	55357	3,8
Truck Ram 1500	02-05	55419	55311	55419	55311	11
Truck Ram 1500 – OE Replacement	2001	55406		55429	55377	3,6,8
Truck Ram 1500 – OE Replacement	94-00	55417		55429	55377	3,6,8
Truck Ram 2500 – OE Replacement	94-00	55417		55429	55377	3,6,8
Truck Ram 2500, 3500	01-02	55406		55429	55377	3,6,8
Truck Ram 2500, 3500 - Y-Style Steering	03-08	55424		55405	55357	3,8
Truck Ram 2500, 3500 - T-Style Steering – OE 4-Link Trucks	09-13	55422		55422	55371	
Truck Ram 2500, 3500 OE Radius Arm Trucks	13-16	55427		55422	55370	
Ramcharger, Trailduster	60-93	55403	55310	55402	55361	2,6,8
Truck 1/2, 3/4, 1 Ton	60-93	55403	55310	55402	55361	2,6,8

FORD 4WD

MODEL	YEAR	SINGLE		DUAL		NOTES
		CYLINDER	BRACKET KIT	CYLINDER*	BRACKET KIT	
Ranger	83-97	55402	55337	55402	55324	2,8,10
Bronco II	83-90	55402	55337	55402	55324	2,8,10
F150 4WD	97-03	55412				7
Expedition	98-02	55412				7
F150 4WD w/ BDS Replacement Strut Kits	04-08	55402	55338	55402	55339	11
F150 4WD w/ BDS Strut Spacer Kits	04-08	55402	55312	55402	55367	11
F150 – Excluding Quad Shocks	80-96	55402	55337	55402	55325	2,8
F150 – w/ Quad Shocks	80-96	55402	55306	55402	55365	3,8
F100, F150 – OE Replacement	70-79	55403				
F100, F150 – w/o anti-sway bar	70-79			55402	55361	2,5,8
Explorer	90-94	55402	55337			
Bronco – Excluding Quad Shocks	80-96	55402	55337	55402	55325	2,8
Bronco – w/ Quad Shocks	80-96	55402	55306	55402	55365	3,8
Bronco – OE Replacement	70-79	55403				
Bronco – w/o anti-sway bar	78-79			55402	55361	2,8
Bronco – OE Replacement	66-69	55404				
F250, F350 Super Duty	05-10	55415	55309	55405	55358	3, 12
F250, F350 Super Duty	11-16	55415	55368	55405	55358	3, 12
F250, F350 Super Duty, Excursion - OE Replacement	99-04	55428	55372	55428	55373	3,8
F250, F350 – Excluding Monobeam F350	80-96	55402	55337			
F350 – w/ Monobeam	86-96	55402	55310			3,6,8

Boots ordered separately

CHEVROLET/GMC
DODGE
FORD
JEEP
SUZUKI
TOYOTA
POSI-LOK
SHOCKS/STEERING STABILIZERS
ACCESSORIES
APPAREL & PROMOTIONAL
PRODUCT SPECS
VEHICLE SPECS

JEEP

MODEL	YEAR	SINGLE		DUAL		NOTES
		CYLINDER	BRACKET KIT	CYLINDER*	BRACKET KIT	
Wrangler JK	07-17	55421	55376			14
Wrangler JK	07-17	55401		55405	55378	13, 17
Wrangler TJ – OE Replacement	97-06	55407		55405	55375	3, 8
Wrangler YJ – OE Replacement	87-96	55407		55402	55353	2, 8
CJ5, CJ7, CJ8 – OE Replacement	76-86	55410				
CJ2A, CJ3A, CJ3B, CJ5, CJ6, CJ7, CJ8	42-86	55402	55307**			
MB, M38, M38A1	41-75	55402	55307**			
Grand Cherokee ZJ – OE Replacement	93-98	55401		55405	55375	3, 8, 16
Grand Cherokee WJ – OE Replacement	99-04	55409		55426	55366	3, 8
Cherokee XJ – OE Replacement	84-01	55401		55405	55375	8
Comanche MJ – OE Replacement	86-92	55401				
Truck, Cherokee, Wagoneer – OE Replacement	74-91	55404				

SUZUKI

MODEL	YEAR	SINGLE		DUAL		NOTES
		CYLINDER	BRACKET KIT	CYLINDER*	BRACKET KIT	
Samurai	85-95	55403	55307			

* When ordering dual stabilizer kit, you must order two (2) cylinders and one (1) bracket kit.

** Will not fit with factory sway bar

Boots ordered separately

Notes

- Dual stabilizer kit only works in combination with the 6" BDS suspension system.
- Dual stabilizer kit is a stacked design (over/under).
- Dual stabilizer kit is an end-to-end design.
- 55414 stabilizer kit only works in combination with the 5" BDS suspension system.
- 1976-77 models with power steering and inverted "Y" steering linkage must be converted to a 1978-79 inverted "T" style in order to install dual steering stabilizers.
- For 3" axle tube diameter – some ¾, 1 ton trucks may have larger axles, measure first
- Will not work with suspension lifts that use a modified steering link and will not fit stock height vehicles.
- Dual stabilizer kit will work on stock height applications.
- Single bracket kit 55326 will work on stock height only.
- Will not work with vehicles equipped with factory front sway bar.
- Single and dual kits will only work in combination with the 4"-6" BDS Suspension systems.
- Dual system will not work for vehicles with 2" of lift or less.
- For use with BDS kits 4" of lift or higher.
- For use with 3" of lift or less.
- For 3" axle tube diameter – some ¾, 1 ton trucks may have larger axles, measure first
- Will not fit V8 Grand Cherokee ZJ models due to larger tie rod diameter.
- #55378 bracket requires front 2" bump stop extensions



5500 SERIES STEERING STABILIZER SPECIFICATIONS

PART #	CYLINDER	EXTENDED	COLLAPSED	CYLINDER DIAMETER	BODY MOUNT	ROD MOUNT	AVAILABLE IN 9500
55401	5623	19.26	12.17	2"	EB1-A	EB1-A	
55402	5402	20.11	11.86	2-3/8"	S1	S1	
55403	5622	22.36	12.99	2"	S1	S1	
55404	5621	23.92	14.30	2"	EB1-A	EB1-A	X
55405	5621	23.92	14.30	2"	EB1-A	EB1-A	X
55406	5621	23.92	14.30	2"	EB1-A	EB1-A	X
55407	5624	19.75	12.13	1-3/4"	EB1-A	EB1-A	X
55408	5621	23.92	14.30	2"	EB1-A	EB1-A	X
55409	5624	19.75	12.13	1-3/4"	EB1-A	EB1-A	X
55410	5620	17.06	10.48	1-3/4"	S1	EB1-A	
55411	5623	19.26	12.17	2"	EB1-A	EB1-A	
55412	5623	19.26	12.17	2"	EB1-A	EB1-A	
55414	5620	17.06	10.48	1-3/4"	S1	EB1-A	
55415	5621	23.92	14.30	2"	EB1-A	EB1-A	X
55405	5621	23.92	14.30	2"	EB1-A	EB1-A	X
55417	5621	23.92	14.30	2"	EB1-A	EB1-A	X
55419	5623	19.26	12.17	2"	EB1-A	EB1-A	
55420	5623	19.26	12.17	2"	EB1-A	EB1-A	
55421	5624	19.26	12.17	2"	EB1-A	EB1-A	X
55422	5621	23.92	14.3	2"	EB1-A	EB1-A	X
55423	5624	19.75	12.13	1-3/4"	EB1-A	EB1-A	
55424	5621	23.92	14.30	2"	EB1-A	EB1-A	X
55425	5621	23.92	14.30	2"	EB1-A	EB1-A	X
55426	5624	19.75	12.13	1-3/4"	EB1-A	EB1-A	X
55427	5621	23.92	14.3	2"	EB1-A	EB1-B	X

CHEVROLET/GMC

DOODGE

FORD

JEEP

SUZUKI

TOYOTA

POSI-LOCK

SHOCKS/STEERING STABILIZERS

ACCESSORIES

APPAREL & PROMOTIONAL

PRODUCT SPECS

VEHICLE SPECS



FOX 2.0 PERFORMANCE SERIES STEERING STABILIZERS

FEATURING FOX 50/50 VALVED 2.0 ALUMINUM CYLINDERS FOR IMPROVED CONTROL



CHEVY/GMC 4WD

Model	Year	SINGLE		DUAL		
		Cylinder	Bracket Kit	Cylinder*	Bracket Kit	Notes
GM Trucks (1/2, 3/4, 1-ton)	73-87			98224011	55374	1,2,3
GM SUVs (1/2, 3/4, 1-ton)	73-91			98224011	55374	1,2,3

DODGE 4WD

Model	Year	SINGLE		DUAL		
		Cylinder	Bracket Kit	Cylinder*	Bracket Kit	Notes
Ram 1500	94-01			98224012	55377	2
Ram 2500/3500	94-02			98224012	55377	2
Ram 2500 - T-Style Steering	08-13			98224016	55371	4
	14-16	98224018		98224016	55370	
Ram 3500 - T-Style Steering	08-12			98224016	55371	4
	13-16	98224018		98224016	55370	

FORD 4WD

Model	Year	SINGLE		DUAL		
		Cylinder	Bracket Kit	Cylinder*	Bracket Kit	Notes
F250/F350	99-04	98224014	55372	98224014	55373	
	05-16			98224019	55358	1,5

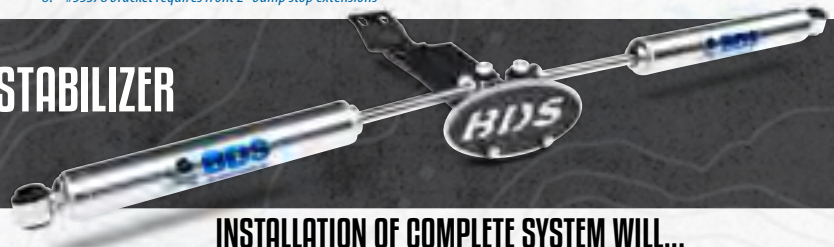
JEEP 4WD

Model	Year	SINGLE		DUAL		
		Cylinder	Bracket Kit	Cylinder*	Bracket Kit	Notes
Wrangler JK	07-17	98224013	55376	98224010	55378	6,8
Wrangler TJ	97-06	98224017		98224012	55375	
Cherokee XJ	84-01	98224017		98224012	55375	
Grand Cherokee ZJ	93-98	98224017		98224012	55375	7

* When ordering dual stabilizer kit, you must order two (2) cylinders and one (1) bracket kit.

- Notes
1. Dual stabilizer kit is an end-to-end design.
 2. For 3" axle tube diameter - some trucks may have larger axles, measure first
 3. Dual stabilizer will work on stock height applications
 4. Must have "T" style steering, older "Y" style steering must be converted to "T"
 5. This dual system will not work on vehicles with 2" of lift or less.
 6. #55376 bracket required only if vehicle not currently equipped with BDS front track bar relocation bracket
 7. Will not fit V8 Grand Cherokee ZJ models due to larger tie rod diameter.
 8. #55378 bracket requires front 2" bump stop extensions

9500 SERIES STEERING STABILIZER MOUNTING SYSTEMS



FEATURES INCLUDE:

- Hydraulic stabilizer cylinders with a brushed stainless appearance and a top clear coat
- Heavy-duty gusseted mounting brackets
- All hardware and instructions included

INSTALLATION OF COMPLETE SYSTEM WILL...

- Enhance vehicle control with reduced steering shimmy and bump steer
- Improve tire wear and front-end component life
- Lessen side-to-side motion caused by wide tires and road conditions

DODGE 4WD

MODEL	YEAR	SINGLE		DUAL		
		CYLINDER	BRACKET KIT	CYLINDER*	BRACKET KIT	NOTES
Truck Ram 1500 - Mega Cab	06-08	95406		95405	55357	1,3
Truck Ram 1500 - OE Replacement	2001	95406		95404	55377	1,2,3
Truck Ram 1500 - OE Replacement	94-00	95417		95404	55377	1,2,3
Truck Ram 2500 - OE Replacement	94-00	95417		95404	55377	1,2,3
Truck Ram 2500, 3500	01-02	95406		95404	55377	1,2,3
Truck Ram 2500, 3500 - Y-Style Steering	03-08	95424		95405	55357	1,3,5
Truck Ram 2500, 3500 - OE 4-Link Trucks - T-Style Steering	09-13	95422		95422	55371	1,5
Truck Ram 2500, 3500 OE Radius Arm Trucks	13-16	95427		95422	55370	1

FORD 4WD

MODEL	YEAR	SINGLE		DUAL		
		CYLINDER	BRACKET KIT	CYLINDER*	BRACKET KIT	NOTES
F250, F350 Super Duty	12-15	95415	55368	95405	55358	1,6
F250, F350 Super Duty	05-11	95415	55309	95405	55358	1,6
F250, F350 Super Duty, Excursion	99-04	95405		95408	55373	1,3
F350 - w/ Monobeam	86-96			95404	55351	1,3

JEEP 4WD

MODEL	YEAR	SINGLE		DUAL		
		CYLINDER	BRACKET KIT	CYLINDER*	BRACKET KIT	NOTES
Wrangler JK	07-17	95421	55376	95405	55378	1,4,8
Wrangler TJ, XJ, ZJ - OE Replacement	97-06	95407		95429	55375	1,3,7
Wrangler YJ	87-96	95407				
Grand Cherokee WJ - OE Replacement	99-04	95409		95426	55366	1,3

* When ordering dual stabilizer kit, you must order two (2) cylinders and one (1) bracket kit.

- Notes
1. Dual stabilizer kit is an end-to-end design.
 2. For 3-1/4" axle tube diameter only. Does not fit Dana 60 front axle.
 3. Dual stabilizer kit will work on stock height applications.
 4. Dual system work with BDS 4" of lift or higher.
 5. 55357 bracket kit is designed for trucks with Y-style steering. 55369 bracket kit is designed for trucks with T-style steering.
 6. Dual system will not work with 2" lift or less.
 7. Will not fit V8 Grand Cherokee ZJ models due to larger tie rod diameter.
 8. #55378 bracket requires front 2" bump stop extensions

Boots ordered separately

Learn more about performance suspension parts we have.