

ARB AIR LOCKER *Air Operated Locking Differentials*

RDCP & RDCPA Portable Air Compressor

ITEM #	QTY	DESCRIPTION	PART #	NOTES
01	1	AIR FILTER COVER	290502	
02	1	AIR FILTER ELEMENT	290503	3
03	7	HEX FLANGE SCREW	200404	
04	1	AIR FILTER BASE	290501	
05	4	HEAD FIXING BOLT	290214	
06	1	INTAKE VALVE RETAINER	290203	
07	1	INTAKE VALVE SPRING	150104	
08	1	INTAKE VALVE INSERT	290215	
09	1	HEAD	290201	
10	1	INTAKE VALVE PLUNGER	290202	
11	1	HEAD O-RING	160214	
12	1	BARREL	290309	
*	-	BARREL SHIM (0.2mm)	150501	5
*	-	BARREL SHIM (0.4mm)	150502	5
13	2	PISTON RING	290302	
14	1	BACKING O-RING	160213	
15	1	MANIFOLD RETAINING BOLT (M8 X 105mm)	6151174	
16	1	MANIFOLD RETAINING BOLT SEAL	160601	
17	1	MANIFOLD - RDCP	290208	1
17A	1	MANIFOLD - RDCPA	290209	2
18	1	EXHAUST O-RING	160216	
19	1	EXHAUST VALVE SPRING	150103	
20	1	EXHAUST VALVE PLUNGER	290205	
21	1	MANIFOLD O-RING	160212	4
22	1	PRESSURE SWITCH	CO35	1
23	2	ELBOW (1/4" MALE/FEMALE)	170207	1
24	1	PUMP-UP KIT (RDCP)	PUK	1
24A	1	PUMP-UP KIT (RDCPA)	PUK2	2
25	1	COVER PLATE	290404	
26	1	SOCKET HEAD CAP SCREW (M6 X 16mm)	200208	
27	1	PISTON/CONNECTING ROD ASSEMBLY	290310	
28	1	COUNTERWEIGHT	290402	
29	1	MOTOR ASSEMBLY (12V)	290412	
30	1	MOUNTING BRACKET ASSEMBLY	290604	
31	1	CUP HEAD BOLT (M6 X 25mm)	6151082	
32	6	FLANGE NUT M6	6151173	
33	1	MOUNTING PLATE	290607	
34	5	COUNTERSUNK SCREW (M6 X 12mm)	6151171	
*	1	WIRING LOOM (RDCP)	180402	1
*	1	WIRING LOOM (RDCPA)	180406	2
*	1	RELAY (12V, 40A)	CO42	1
*	1	CARRY CASE	270102	
*	1	TYRE PRESSURE GAUGE	171101	1
*	1	INFLATION ACCESSORY KIT	171102	1

* Not illustrated in exploded view.

Specs:

Voltage	12 Volts
Current Draw	12A (No-Load), 18A (Load)
Air Flow	33.0L/min @ 0kPa [1.17CFM @ 0psi] 26.4L/min @ 200kPa [0.93CFM @ 29psi]
Total Weight	6.4kg [14.1lbs] (RDCP) 6.1kg [13.4lbs] (RDCPA)
Size	208mm x 440mm x 238mm [8.19" x 17.32" x 9.37"]
Manifold Port	1/4" npt [RDCP] 1/8" bspt [RDCPA]
Pressure Switch	Open 690kPa [100psi] Closed 490kPa [70psi]
Hose Length	6m [20ft]

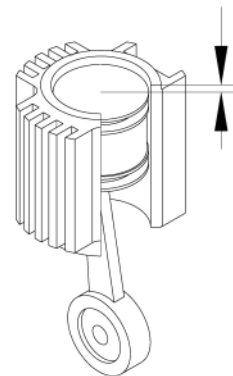
Notes:

- Used on RDCP only.
- Used on RDCPA only.
- The air filter should be cleaned regularly. To do this, unclip the black cover (01) and remove the element (02). Wash in hot, soapy water, rinse and let dry completely. Reinsert the element into the base (SMOOTH SIDE DOWN), wipe out the cover, and clip back into place.

The compressor manifold must be periodically removed to clean out any condensation, etc. To do this bleed off any residual pressure that may be in the manifold; undo the hexagonal headed bolt at the end of the manifold. Remove the manifold and wipe out any moisture. If there is excessive moisture in the manifold then it should be cleaned out more regularly.

Refit manifold making sure that the O-ring is in its correct position; insert the bolt with the seal under the head. Torque the bolt up to 9.5Nm. **Do not over tighten.** Run the compressor and check for any air leaks.

- For replacement O-ring use BS041 Viton 75.
- Barrel shims are used to set the deck height of the piston. With the piston at top dead centre (TDC), the deck height is the distance of the piston crown to the top of the barrel (see diagram below). Deck height specification is 0.50mm +0.2/-0.0 [0.020" +0.008/-0.000].

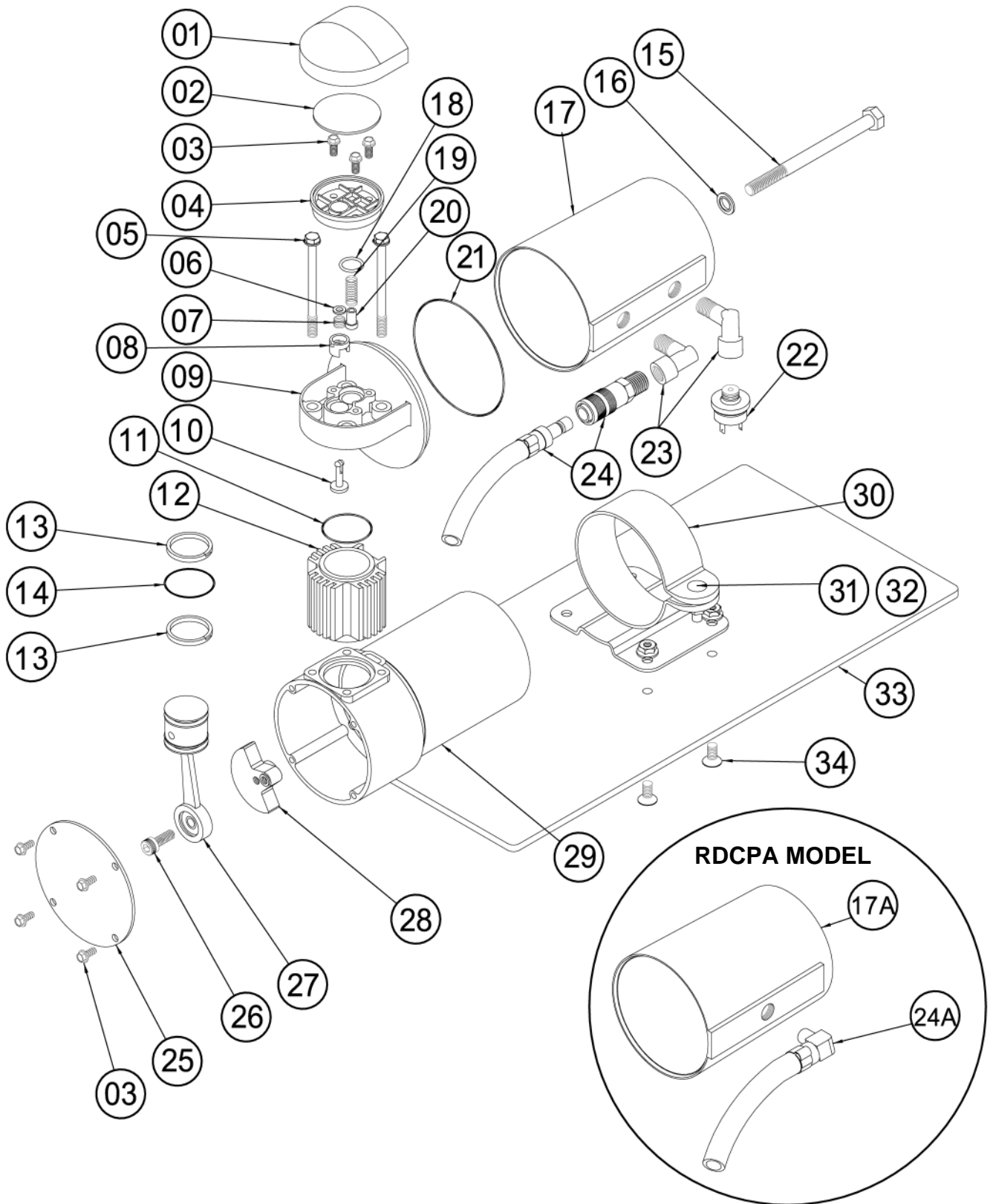


Deck height should measure between 0.50mm and 0.70mm [0.020 and 0.028"]

ARB AIR LOCKER *Air Operated Locking Differentials*

RDCP & RDCPA Portable Air Compressor - Diagram

RDCP MODEL SHOWN



RDCP & RDCPA

