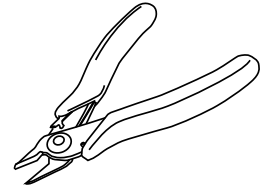


Jeep Wrangler

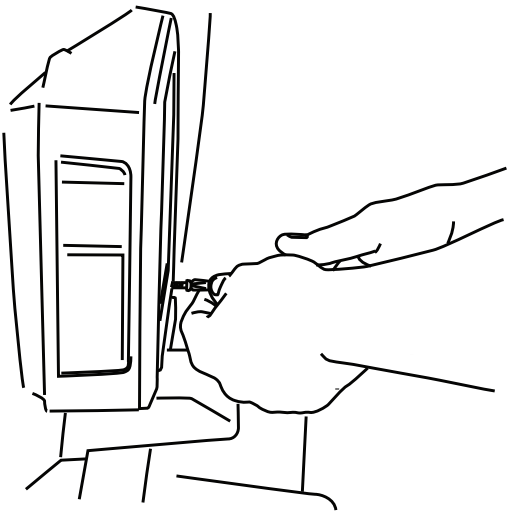
Required Tools



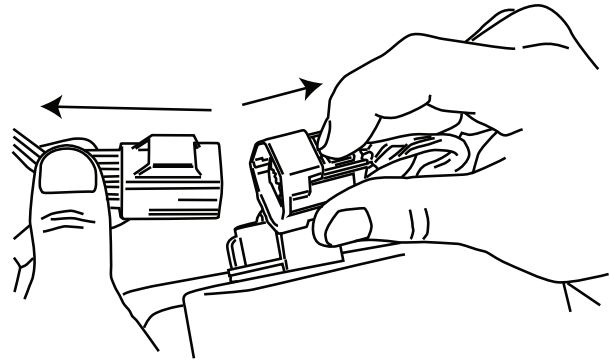
#2 Phillips Screwdriver



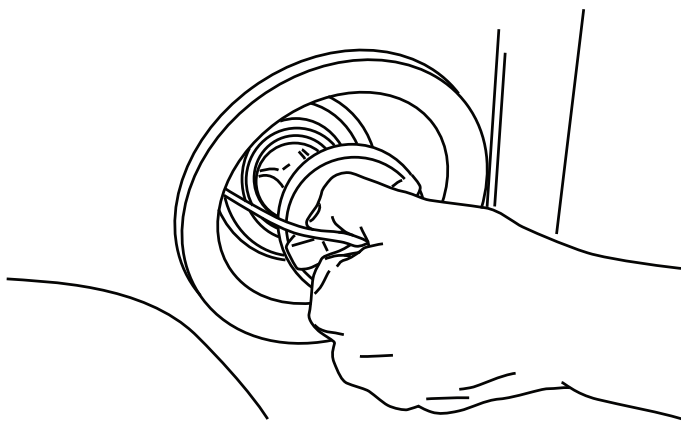
Side Cutters



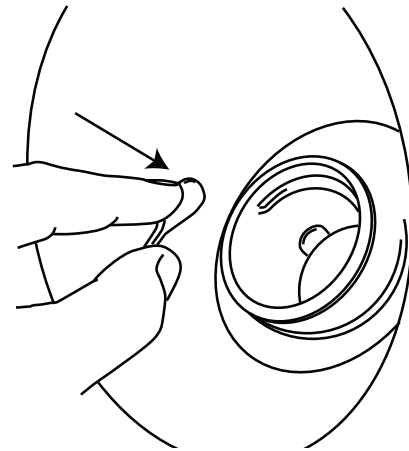
1 To access backside of the stock fuel filler housing, remove left tailight.



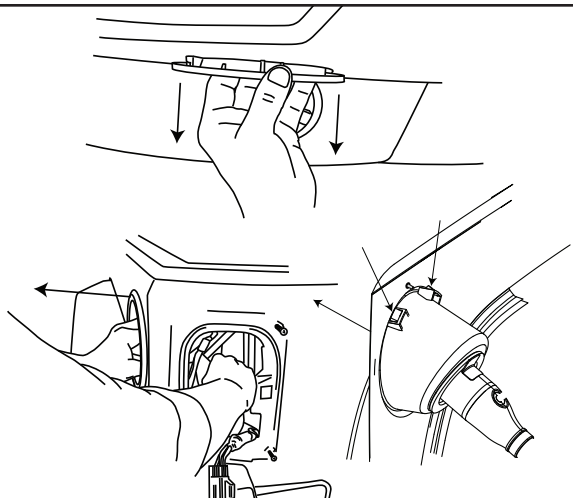
2 Disconnect removed tailight and two screws and set aside to be reinstalled later.



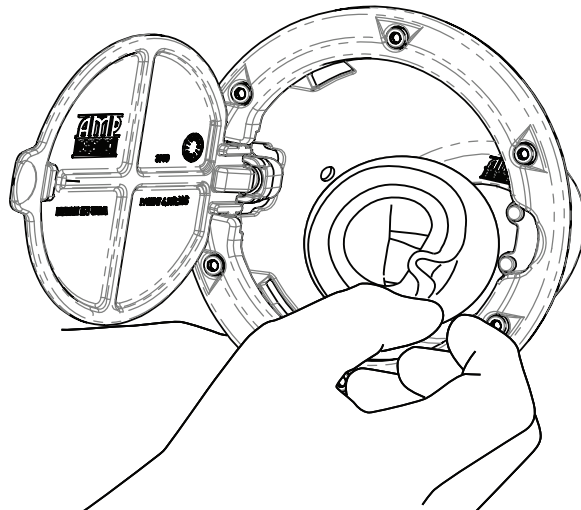
3 Remove fuel cap.



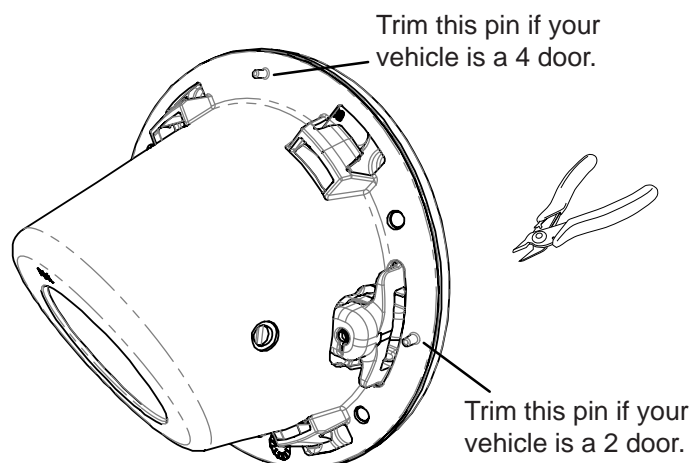
4 Remove fuel cap tether and set fuel cap aside to be reinstalled later.



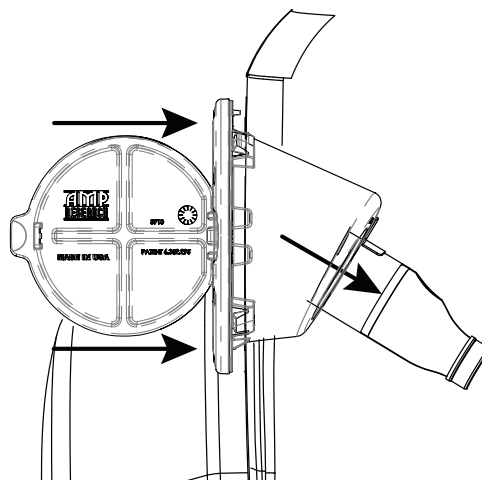
5 Remove fuel filler housing. With the left tailight out of the way, reach behind the sheet metal and disengage the housing retention clips, while pulling on the housing from the outside.



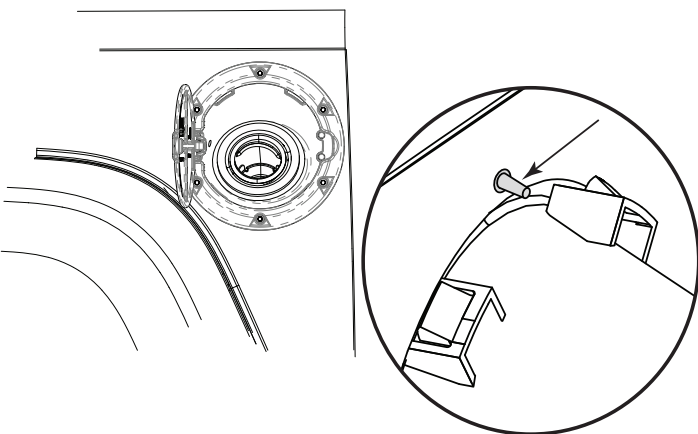
6 Transfer Rubber Grommet. Remove filler neck grommet from stock housing and reinstall on the new Fuel Door housing. Note the orientation of grommet.



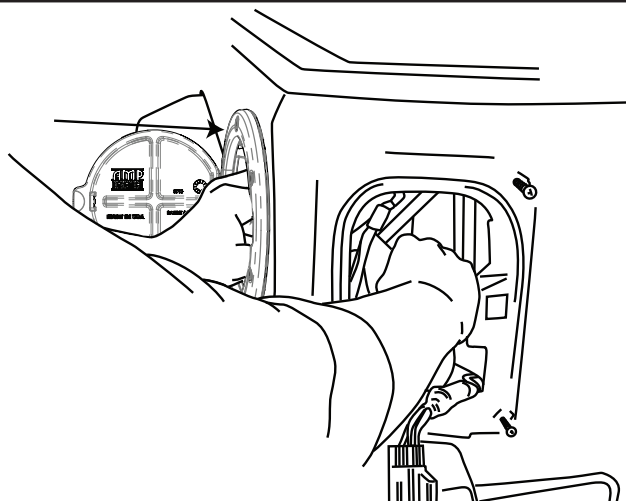
7 Remove correct locator pin. Cut off the correct unused locator pin, as indicated above, flush to plastic surface.



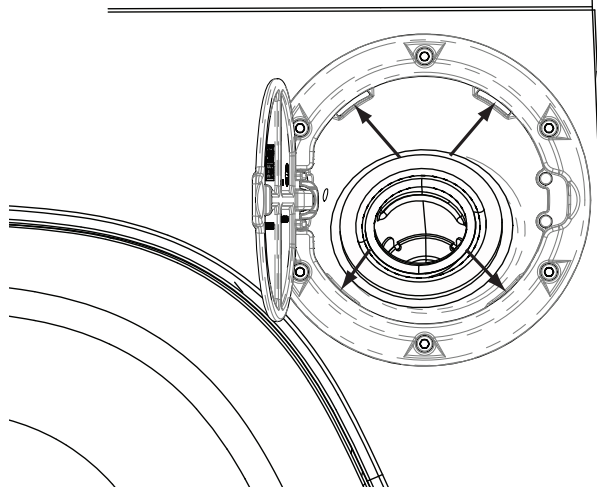
8 Install fuel door housing while pressing grommet over fuel filler neck.



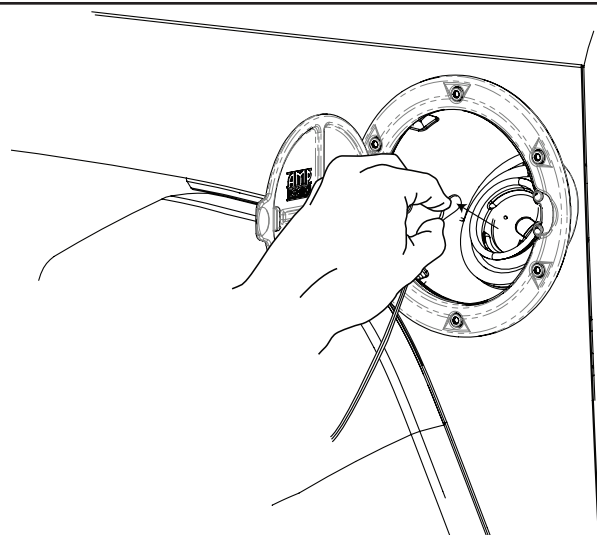
9 Locator Pin Alignment. Be sure that untrimmed locator pin engages with locator pin hole in sheet metal.



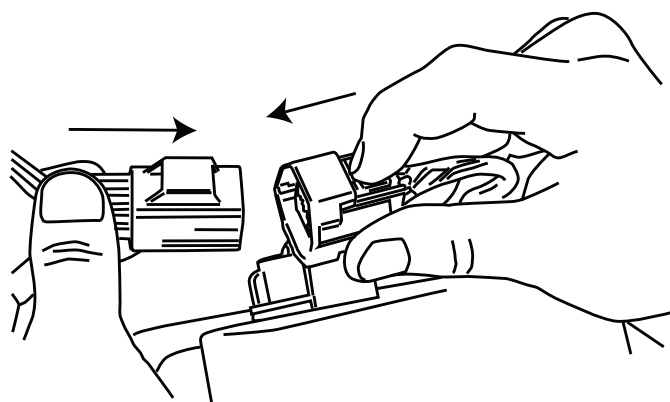
10 With locator pin aligned, continue to press fuel door assembly into position, while holding filler neck in place.



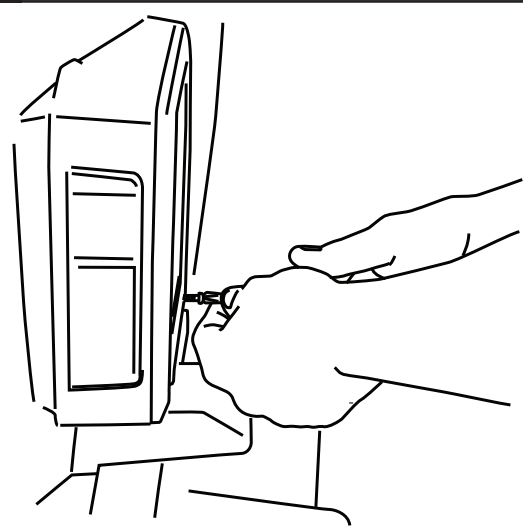
11 Make sure all four engagement clips engage with vehicle sheet metal, pressing outward on the clips.



12 Replace fuel filler cap, snapping tether into place and reinstalling cap onto filler neck.



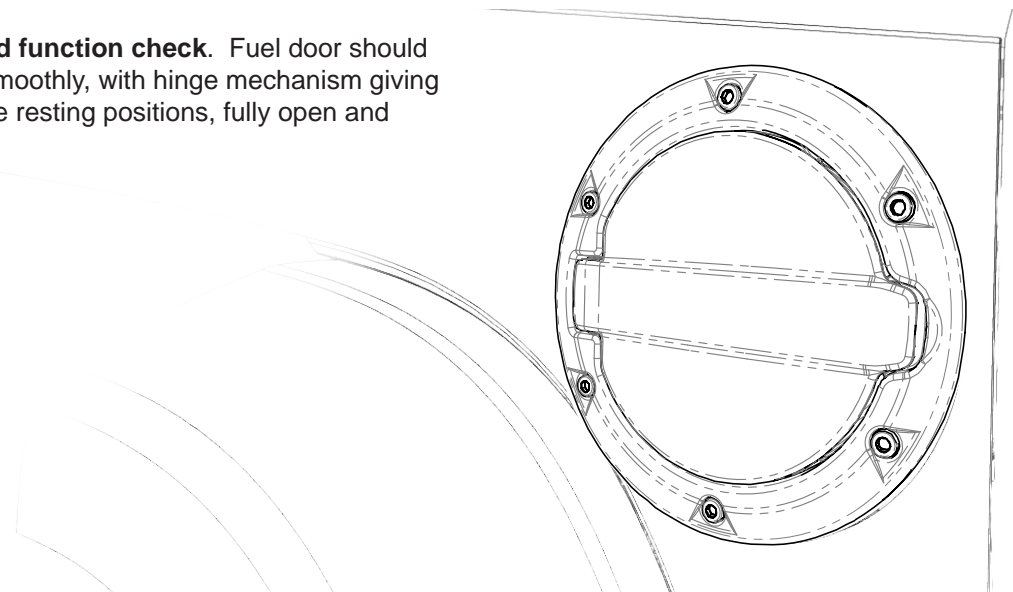
13 Reconnect tailight connector.



14 Reinstall tailight.



Final Fitment and function check. Fuel door should open and close smoothly, with hinge mechanism giving the lid two positive resting positions, fully open and fully closed.



15