

ADDICTIVE DESERT DESIGNS

2015 – Current Chevy Colorado HoneyBadger Front Bumper Installation Instructions

PREPARATION

1. Disconnect the negative terminal on the battery. Park the vehicle on level ground and set the emergency brake.
2. We recommend reading through the installation instructions in whole before performing the work.
3. You will need the following tools:
 - a. T-15 Torx Bit
 - b. 10mm Socket
 - c. 7mm Socket
 - d. 15mm Socket
 - e. 18mm Socket & Wrench
 - f. Ratchet
 - g. Cutoff Wheel
 - h. Masking Tape
 - i. Tape Measure
 - j. Straight Edge
 - k. Utility Knife

Note: this installation requires 2 people for best results

4. Included in Kit:

Stock Hardware is Reused

REMOVAL

1. Using a T-15 Torx bit, remove the 6 lower inner fender bolts. (Fig A) Repeat this step on the other side of the vehicle.



2. Peel back the inner fender liner and unplug the fog light connectors on both sides of the vehicle. (Fig B)

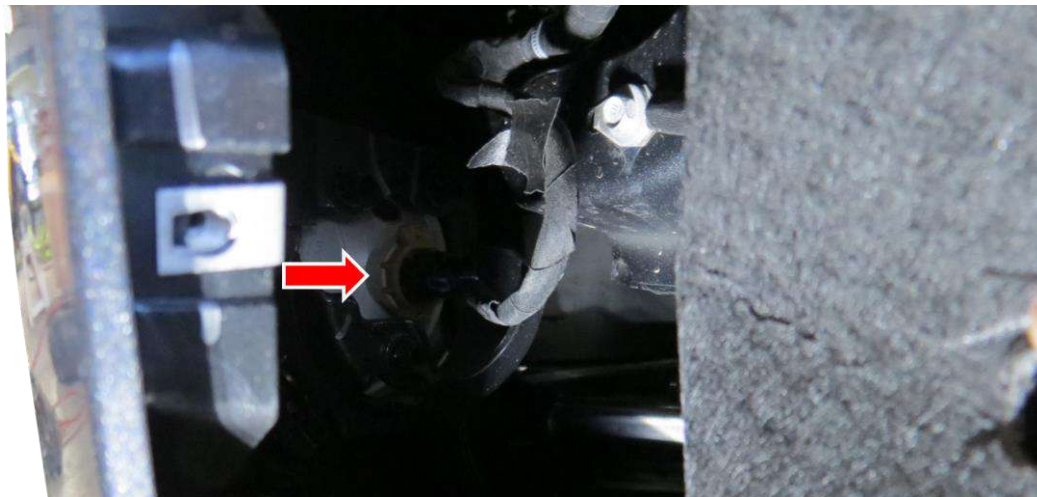


Fig B

3. From underneath the truck, there are two bolts (per side) holding the front fascia to the truck. The locations of these bolts are shown in Fig C. Using a 7mm and a 10mm socket, remove these bolts on both sides of the truck (4 total)



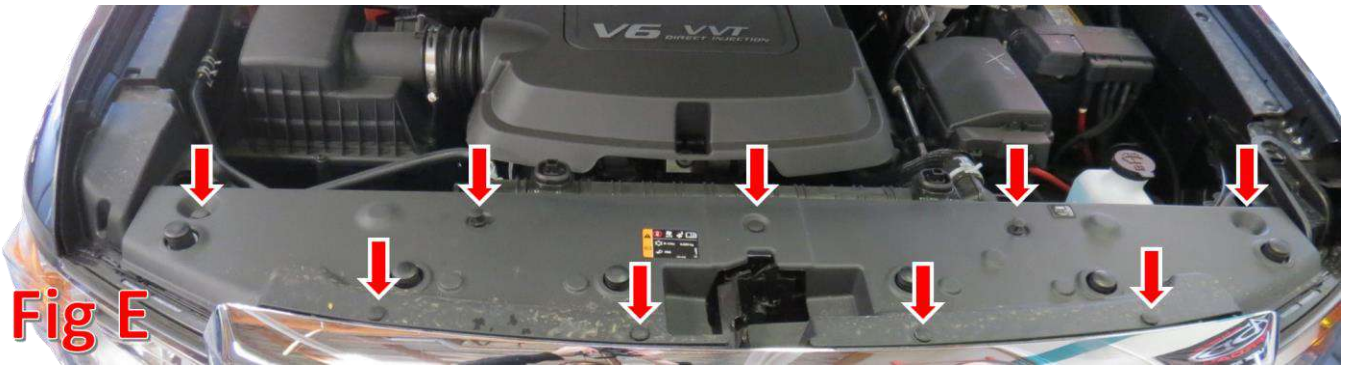
Fig C

4. Using a 7mm socket, remove the three bolts (per side) holding the valance to the front fender. The bolts are behind the inner fender liner. (Fig D)



Fig D

5. Open the hood and remove the plastic clips (x9) referenced in Fig E.



6. Using a T-15 Torx bit, remove the 6 bolts holding the grill to the vehicle. (Fig F)



7. Pull the entire front fascia off of the truck. (Fig G)



8. Remove the 3 plastic clips holding on the now exposed air dam. Then, release the clips on each side of the air dam and pull the dam off of the vehicle. (Fig H)

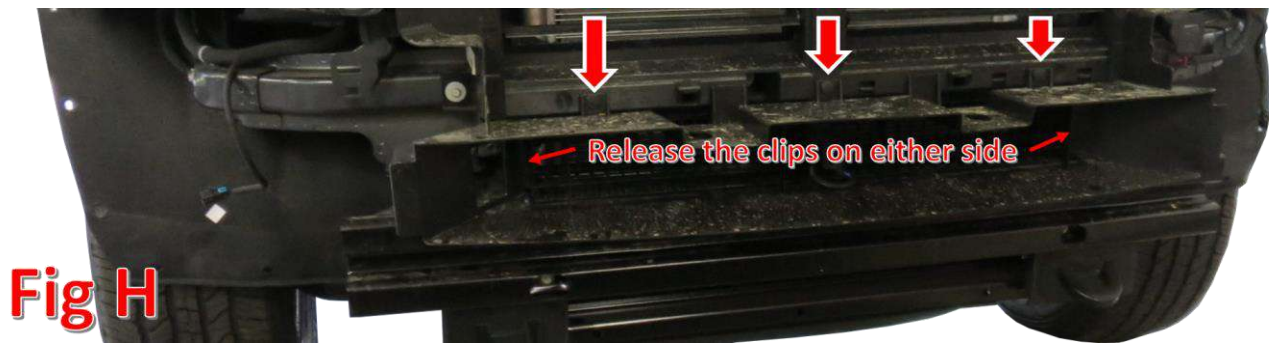


Fig H

9. Using a 15mm socket, remove the four bolts holding the steel bumper bar on the truck and remove this bar. Save these bolts for reuse. (Fig I)

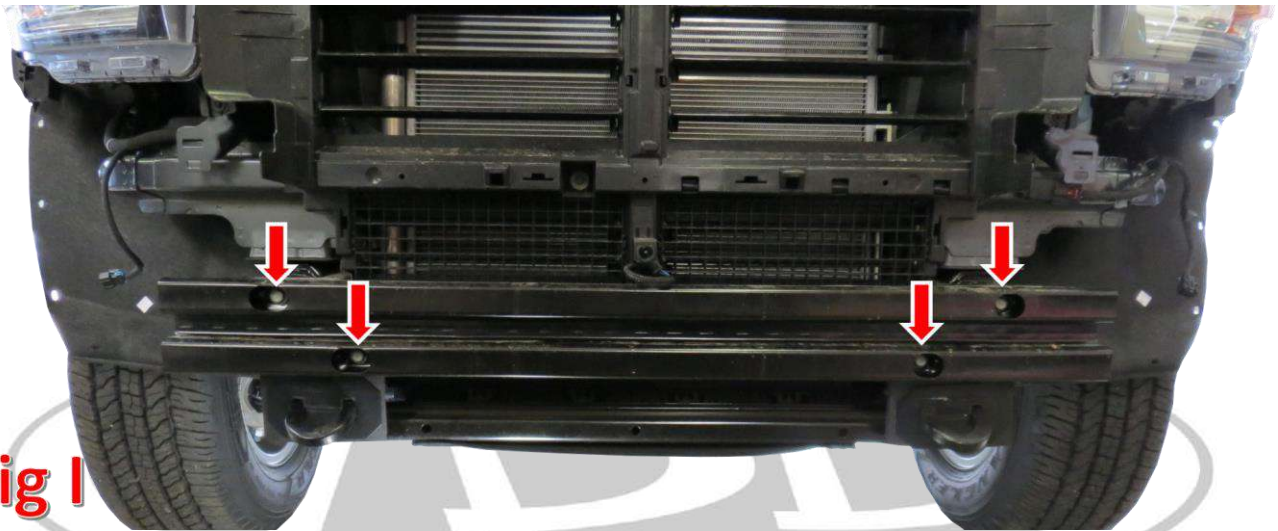


Fig I

10. Using an 18mm Socket and Wrench, remove the two bolts holding on each tow hook. Then, remove the hooks from the truck. (Fig J)

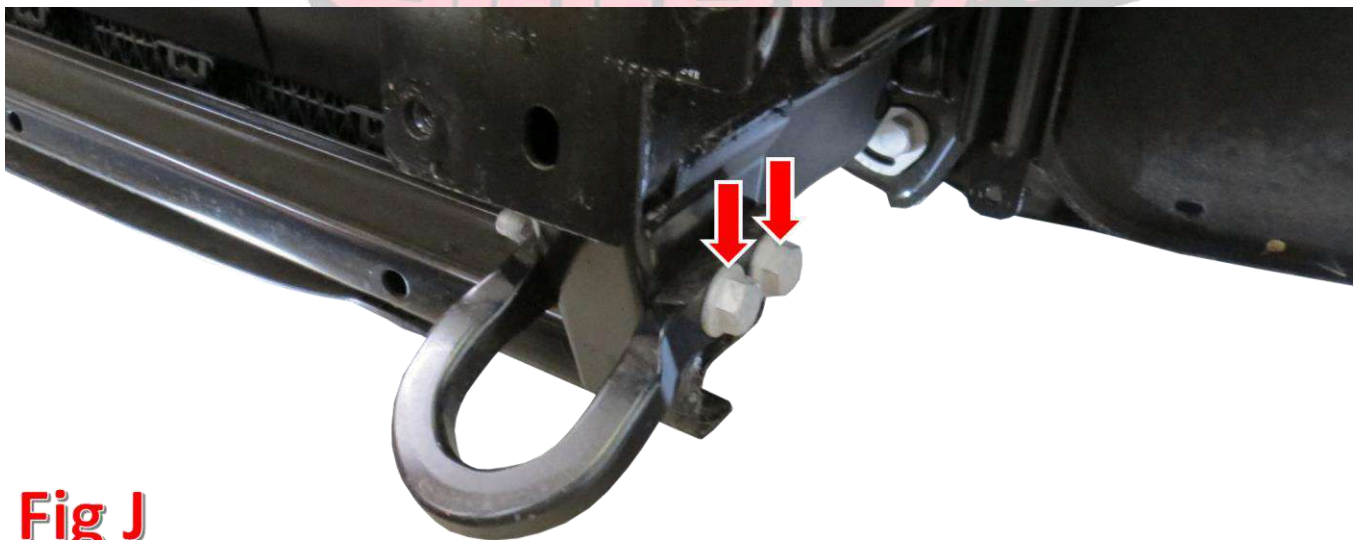


Fig J

11. Using a 15mm socket, remove the front two skid plate bolts. Save these bolts for reuse. (Fig K)



12. Put the front fascia back on the vehicle. To do this, clip the fascia in place, then reinstall the bolts/clips from Steps 4, 5, & 6.
13. Cut the valance to shape.
 - a. With a blank valance, measure 2 1/4" up from the bottom of the center section in several spots. Use a straight edge to tape a straight line connecting these dots. Extend this straight line into the side sections using that straight edge. Refer to Fig L for reference. The line you are drawing in this step is highlighted in red.



- b. There is a crease in the center line of the valance. Use this center line and measure 23 inches from the center line in both directions. Measure this in a few spots so that you can make a straight vertical line 23 inches from the center of the valance in both directions. Refer to Fig M.

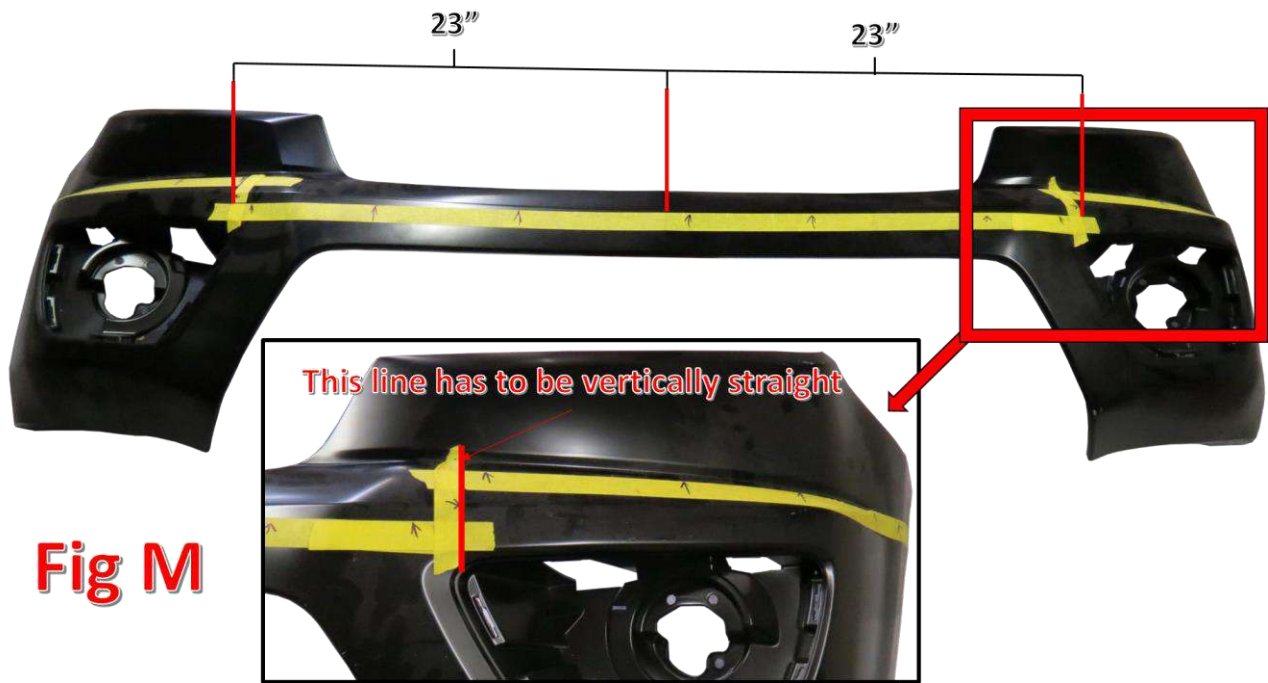


Fig M

- c. Measure from the highest point on the valance downward. Make a mark at 7 inches. We will refer to this as "Measurement A" in Fig N. Measure from the corner of valance (fender side) downward, following the curve of the end of the valance. Make a mark at 3 1/4 inches. We will refer to this as "Measurement C" in Fig N. Now, find the body line that starts right next to measurement C, and measure from it straight downward. Make a mark at 3 3/8 inches. We will refer to this as "Measurement B" in Fig N. Fig O shows a close up of the starting points of each measurement.



Fig N

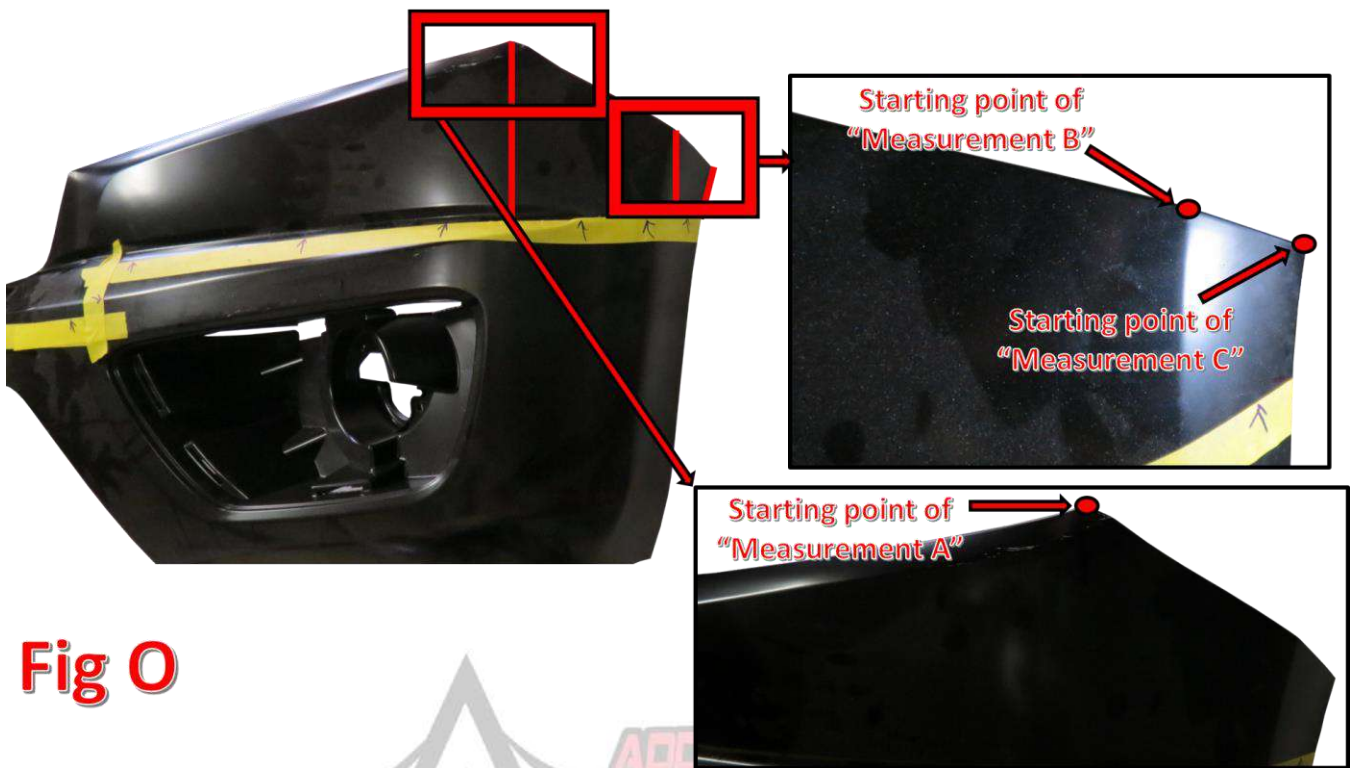


Fig O

- d. Take the vertical line you drew 23 inches from the valance center point and extend it upwards until it reaches the body line just below your headlight. Measure from that body line downward (following your vertical line) and make a mark at 3 1/2". Now, using a straight edge, connect the dots you've drawn in this step and the previous step. (Fig P)

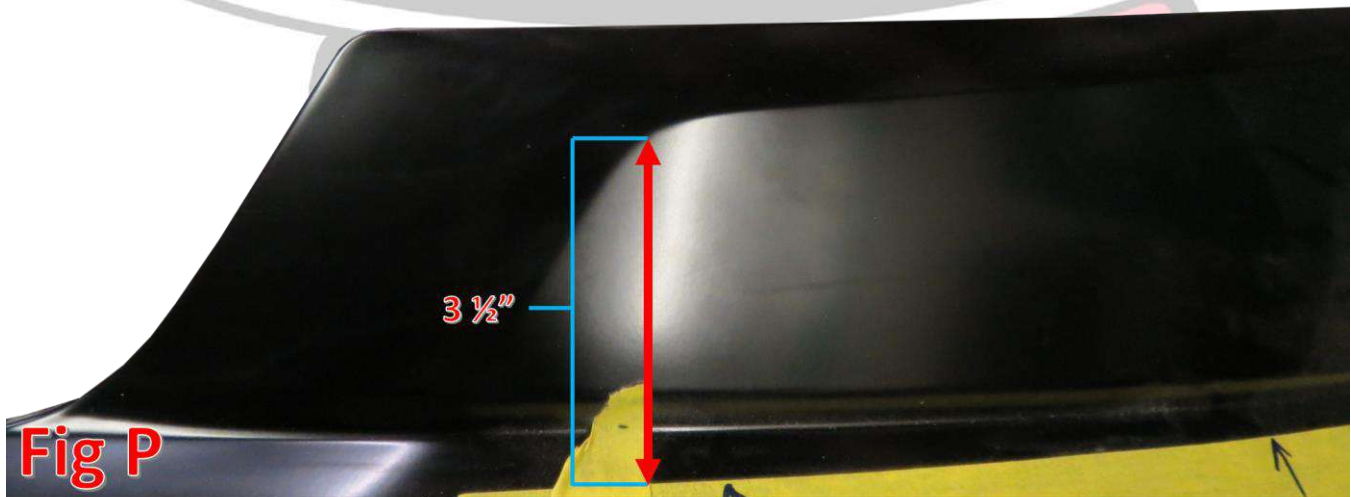


Fig P

- e. Repeat Steps 3 & 4 on the other side of the valance.
- f. Cut the bottom portion of the valance off using the lines you just marked. Refer to Fig Q.



Fig Q

14. Prepare to install your new A.D.D. HoneyBadger Front Bumper.

INSTALLATION

1. Line the bumper mounting holes up with the threaded holes on the vehicle's frame horns. Secure the bumper in place using the bolts (x4) that were removed in Removal Step 9. Leave these bolts loose for now. (Fig R)

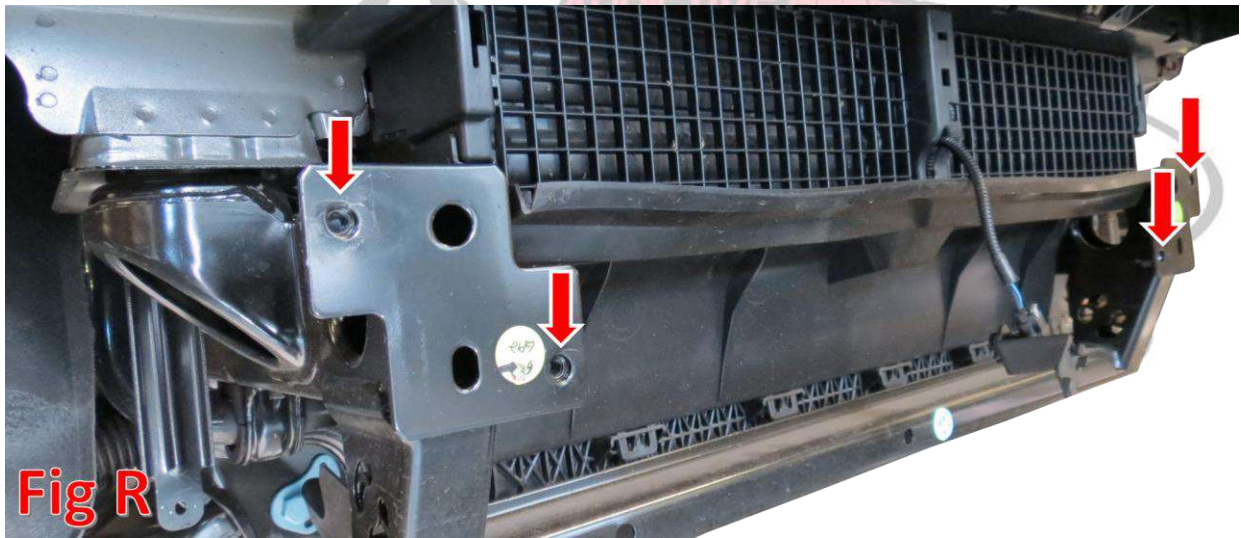


Fig R

2. Mount the bottom tabs of the bumper to the truck using the bolts that were removed in Removal Step 11. (Fig S)



Fig S

3. With the help of a second person, align the bumper so that it is straight in relation to the grill and valance. Once the bumper is straight, tighten the mounting bolts to the manufacturer's specifications.
4. Using a utility knife, trim the inner fender liners to match the line of the bumper. (Fig T)



Fig T

5. Stand back and enjoy your A.D.D. HoneyBadger Front Bumper.
6. Check and re-tighten if needed, all mounting bolts after 100 miles and periodically thereafter.



When it comes to quality off-road bumpers, Addictive Desert Designs is the brand you can depend on.