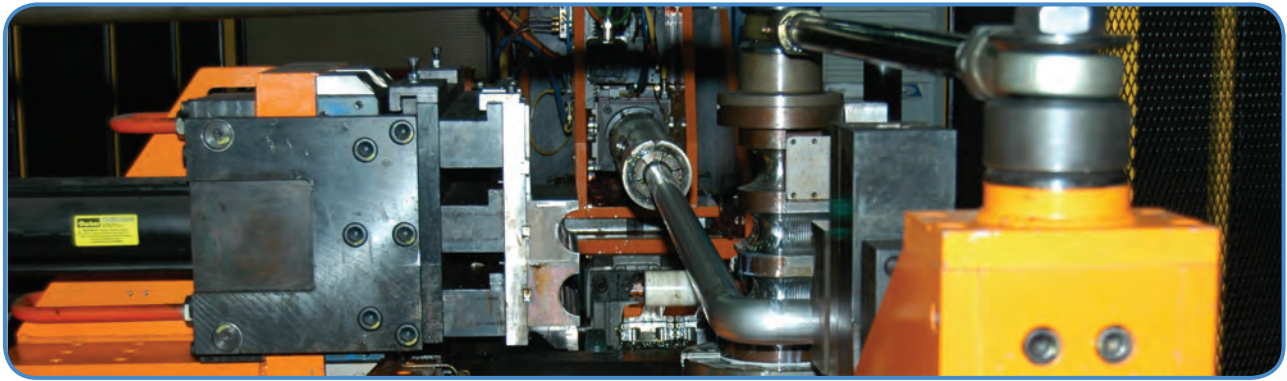


STAINLESS STEEL MANDREL BENDS



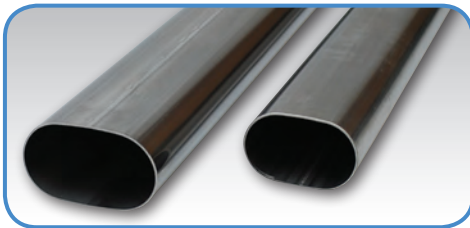
T304 STAINLESS STEEL OVAL MANDREL BENDS



Part No.	Nominal Size	Bend Angle	Tube Thickness	Centerline Radius
13189	3"	45 deg. (horizontal)	16 gauge	4 1/2"
13191	3"	90 deg. (horizontal)	16 gauge	4 1/2"
13200	3"	45 deg. (vertical)	16 gauge	4 1/2"
13202	3"	90 deg. (vertical)	16 gauge	4 1/2"
13192	3 1/2"	45 deg. (horizontal)	16 gauge	5 1/4"
13194	3 1/2"	90 deg. (horizontal)	16 gauge	5 1/4"

All Oval Bends feature 6" leg lengths

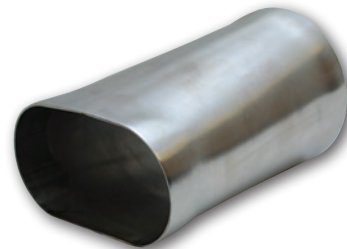
T304 S.S. OVAL TUBING, STRAIGHT LENGTHS



Part No.	Nominal Size	Tube Thickness	Overall Length
13182	3"	16 gauge	5 ft.
13183	3 1/2"	16 gauge	5 ft.
13184	4"	16 gauge	5 ft.

Please note: Overall length tolerance = +/- 2"

T304 S.S. OVAL TO ROUND TRANSITIONS



Part No.	Description	Overall Length
13170	3" Oval (nom.) to 3" Round	6"
13171	3 1/2" Oval (nom.) to 3 1/2" Round	6"
13172	4" Oval (nom.) to 4" Round	6"

TECH TIP

The nominal size listed for oval tubing approx. equals the equivalent diameter for like-size round tubing.

Nominal Size	Actual Tube Size
3"	2.20" x 3.45"
3.5"	2.375" x 4.125"
4"	2.60" x 4.80"

T304 S.S. OVAL FLANGES



Part No.	Description
13175S	Fits 3" Nom. Oval tubing
13176S	Fits 3 1/2" Nom. Oval tubing
13177S	Fits 4" Nom. Oval tubing

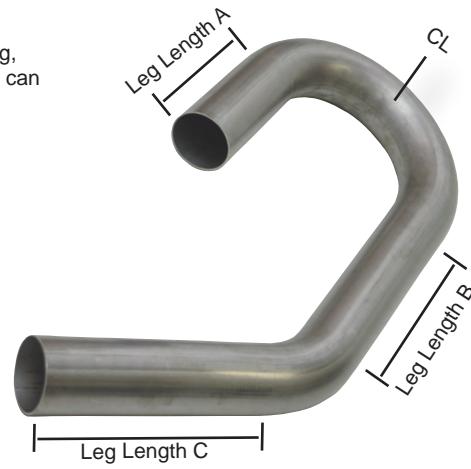
Please Note: Vibrant also offers Genuine Torca® Stainless Steel Easy Seal Exhaust Sleeve Clamps which permit effective clamping of our 3", 3 1/2" and 4" nominal oval tubing (please refer to pg. 75).

U-J MANDREL BENDS

Vibrant U-J Mandrel Bends give you a 180° bend, a 45° bend and a straight leg, making them an economical option for custom fabricators because each piece can yield up to three separate bends and a straight section.

Ideal for custom fabricating exhaust systems, headers and intercooler pipes.

Available in T304 Stainless Steel and Aluminized (Mild) Steel.



T304 STAINLESS STEEL U-J MANDREL BENDS

Tube O.D.	Tube Thickness	Centerline Radius	Leg Length A	Leg Length B	Leg Length C	T304 Stainless Steel Part No.
1 1/2"	16 gauge	3"	4"	7"	10"	2601
1 5/8"	16 gauge	2 1/4"	4 1/2"	8"	9"	2602
1 3/4"	16 gauge	3 1/2"	4 1/2"	8"	8"	2603
1 7/8"	16 gauge	3"	6"	7"	12"	2604
2"	16 gauge	4"	4 1/2"	7"	7"	2605
2 1/4"	16 gauge	3 1/2"	4 1/2"	8"	8"	2607
2 1/2"	16 gauge	3 1/2"	5"	7"	8"	2609
2 3/4"	16 gauge	4 1/8"	6"	7"	11"	2615
3"	16 gauge	5"	6 1/2"	9"	12"	2611
3 1/2"	16 gauge	5 3/4"	7"	9"	9"	2612
4"	16 gauge	6"	7 1/2"	8 1/2"	10"	2613

ALUMINIZED MILD STEEL U-J MANDREL BENDS

Tube O.D.	Tube Thickness	Centerline Radius	Leg Length A	Leg Length B	Leg Length C	Aluminized (Mild) Steel Part No.
1 1/2"	16 gauge	3"	5"	8"	8"	12601
1 3/4"	16 gauge	3 1/2"	5"	7"	7"	12603
2"	16 gauge	4"	4"	9"	12"	12605
2 1/4"	16 gauge	3 1/2"	4"	8"	12"	12607
2 1/2"	16 gauge	4 1/4"	5"	8"	12"	12609
3"	16 gauge	5"	8"	10"	23"	12611
3 1/2"	16 gauge	5"	7"	13"	21"	12612
4"	16 gauge	6"	7"	8"	8"	12613

WALL MOUNT BRACKET

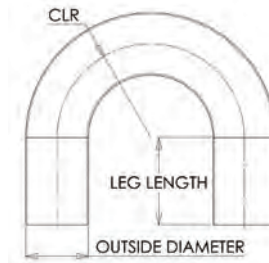
These powder coated Steel Brackets make it easy to organize your inventory of Vibrant Performance Mandrel Bends and Straight Tubing.

Part No. 2995



T304 S.S. 180° BENDS

Part No.	Tube O.D.	Tube Thickness	Centerline Radius	Leg Length A	Leg Length B
2618	1 1/4"	16 gauge	2 3/4"	4"	4"
2619	1 3/8"	16 gauge	2 3/8"	4"	4"
2620	1 1/2"	16 gauge	1 1/2"	4"	4"
2694	1 1/2"	16 gauge	2 3/8"	4"	4"
2621	1 5/8"	16 gauge	1 5/8"	4"	4"
2695	1 5/8"	16 gauge	2 1/8"	4"	4"
2622	1 3/4"	16 gauge	1 3/4"	4"	4"
2696	1 3/4"	16 gauge	2 5/8"	4"	4"
2623	1 7/8"	16 gauge	2"	6"	6"
2697	1 7/8"	16 gauge	3"	5"	5"
2624	2"	16 gauge	2"	4"	4"
2698	2"	16 gauge	2 1/2"	4"	4"
2625	2 1/8"	16 gauge	3 1/8"	4"	4"
2626	2 1/4"	16 gauge	3 3/8"	5"	5"
2627	2 3/8"	16 gauge	3 1/2"	5"	5"
2628	2 1/2"	16 gauge	3 1/2"	5"	5"
2629	2 3/4"	16 gauge	4 1/8"	5"	5"
2656	3"	16 gauge	5"	5"	5"
2657	3 1/2"	16 gauge	5 1/2"	5"	5"
2658	4"	16 gauge	6"	5"	5"
2659	5"	14 gauge	7 1/2"	5"	5"



T304 S.S. 120° BENDS



Part No.	Tube O.D.	Tube Thickness	Centerline Radius	Leg Length A	Leg Length B
13000	1 1/4"	16 gauge	2 3/4"	4"	12"
13001	1 3/8"	16 gauge	2 3/8"	4"	12"
13002	1 1/2"	16 gauge	1 1/2"	4"	12"
13003	1 5/8"	16 gauge	1 5/8"	4"	12"
13004	1 3/4"	16 gauge	1 3/4"	4"	12"
13005	1 7/8"	16 gauge	2"	6"	12"
13006	2"	16 gauge	2"	4"	12"
13007	2 1/8"	16 gauge	3 1/8"	4"	12"
13008	2 1/4"	16 gauge	3 3/8"	4"	12"
13009	2 3/8"	16 gauge	3 1/2"	4"	12"
13010	2 1/2"	16 gauge	3 1/2"	4"	12"
13012	3"	16 gauge	5"	4"	12"

TECH TIP

Customers often ask us what type of filler rod should be used when welding all the different products we offer. The following is a quick reference guide for the most commonly asked questions:

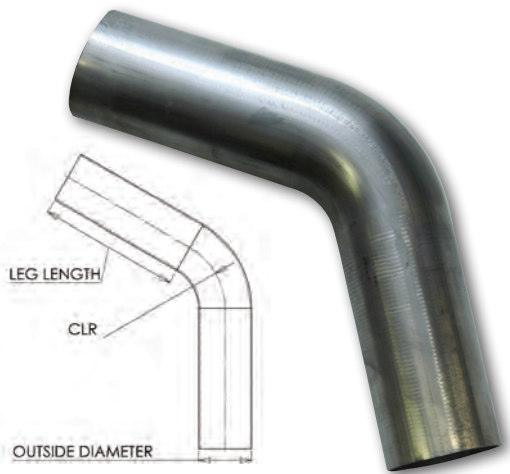
For Welding 304 S.S. to 304 S.S. use 308 filler rod
 For Welding 304 S.S. to 321 S.S. also use 308 filler rod
 For Welding 304 S.S. to Mild Steel, use 309 filler rod

For welding 6061-T6 Aluminum, we suggest either 5356 or 4043 filler rod. 5356 is stronger, more ductile and most suitable if you intend to anodize the aluminum after welding. 4043 is more crack resistant, especially if you intend to heat treat the aluminum and it will perform better if the aluminum product you are welding is exposed to elevated temperatures (150 deg. F and up).

Please refer to page 65 of this catalog to view the full offering of Vibrant Performance TIG Weld Wires.

Part No.	Tube O.D.	Tube Thickness	Centerline Radius	Leg Length A	Leg Length B
13030	1 1/4"	16 gauge	2 3/4"	4"	12"
13031	1 3/8"	16 gauge	2 3/8"	4"	12"
13032	1 1/2"	16 gauge	1 1/2"	4"	12"
13033	1 5/8"	16 gauge	1 5/8"	4"	12"
13034	1 3/4"	16 gauge	1 3/4"	4"	12"
13035	1 7/8"	16 gauge	2"	6"	12"
13036	2"	16 gauge	2"	4"	12"
13050	2"	16 gauge	2 1/2"	4"	12"
13037	2 1/8"	16 gauge	3 1/8"	4"	12"
13038	2 1/4"	16 gauge	3 3/8"	4"	12"
13039	2 3/8"	16 gauge	3 1/2"	4"	12"
13051	2 1/2"	16 gauge	2 1/2"	4"	12"
13040	2 1/2"	16 gauge	3 1/2"	4"	12"
13052	2 3/4"	16 gauge	2 3/4"	4"	12"
13041	2 3/4"	16 gauge	4 1/8"	4"	12"
13053	3"	16 gauge	3"	4"	12"
13042	3"	16 gauge	5"	4"	12"
13043	3 1/2"	16 gauge	5 1/2"	6"	6"
13044	4"	16 gauge	6"	6"	6"
13045	5"	14 gauge	7 1/2"	6"	6"

T304 S.S. 90° BENDS



T304 S.S. 60° BENDS

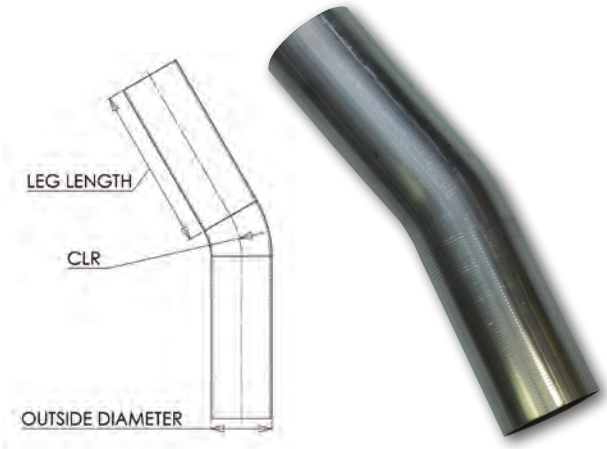
Part No.	Tube O.D.	Tube Thickness	Centerline Radius	Leg Length A	Leg Length B
13062	1 1/2"	16 gauge	1 1/2"	6"	6"
13064	1 3/4"	16 gauge	1 3/4"	6"	6"
13066	2"	16 gauge	2"	6"	6"
13068	2 1/4"	16 gauge	3 3/8"	6"	6"
13070	2 1/2"	16 gauge	3 1/2"	6"	6"
13071	2 3/4"	16 gauge	4 1/8"	6"	6"
13072	3"	16 gauge	5"	6"	6"
13073	3 1/2"	16 gauge	5 1/2"	6"	6"
13074	4"	16 gauge	6"	6"	6"

T304 S.S. 45° BENDS

Part No.	Tube O.D.	Tube Thickness	Centerline Radius	Leg Length A	Leg Length B
13092	1 1/2"	16 gauge	1 1/2"	6"	6"
13094	1 3/4"	16 gauge	1 3/4"	6"	6"
13095	1 7/8"	16 gauge	2"	6"	6"
13096	2"	16 gauge	2"	6"	6"
13098	2 1/4"	16 gauge	3 3/8"	6"	6"
13100	2 1/2"	16 gauge	3 1/2"	6"	6"
13101	2 3/4"	16 gauge	4 1/8"	6"	6"
13102	3"	16 gauge	5"	6"	6"
13103	3 1/2"	16 gauge	5 1/2"	6"	6"
13104	4"	16 gauge	6"	6"	6"
13105	5"	14 gauge	7 1/2"	6"	6"

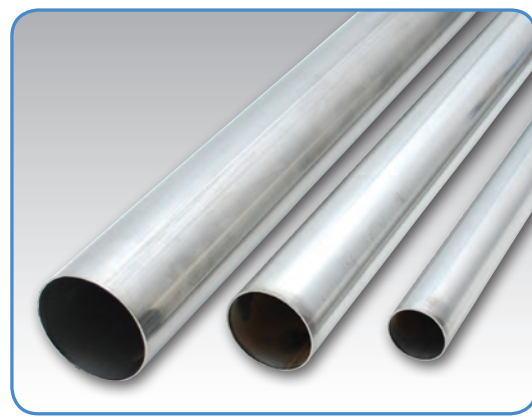


T304 S.S. 15° BENDS



Part No.	Tube O.D.	Tube Thickness	CLR	Leg Length
13122	1 1/2"	16 gauge	1 1/2"	4"x4"
13124	1 3/4"	16 gauge	1 3/4"	4"x4"
13126	2"	16 gauge	2"	4"x4"
13127	2 1/8"	16 gauge	3 1/8"	5"x5"
13128	2 1/4"	16 gauge	3 3/8"	5"x5"
13130	2 1/2"	16 gauge	3 1/2"	5"x5"
13132	3"	16 gauge	5"	5"x5"

T304 S.S. ROUND TUBING, STRAIGHT LENGTHS



Part No.	Tube O.D.	Tube Thickness	Overall Length
2634	1 1/4"	16 gauge	5 ft.
2635	1 3/8"	16 gauge	5 ft.
2636	1 1/2"	16 gauge	5 ft.
2637	1 5/8"	16 gauge	5 ft.
2638	1 3/4"	16 gauge	5 ft.
2639	1 7/8"	16 gauge	5 ft.
2645	2"	16 gauge	5 ft.
2646	2 1/8"	16 gauge	5 ft.
2640	2 1/4"	16 gauge	5 ft.
2647	2 3/8"	16 gauge	5 ft.
2641	2 1/2"	16 gauge	5 ft.
2648	2 3/4"	16 gauge	5 ft.
2642	3"	16 gauge	5 ft.
2643	3 1/2"	16 gauge	5 ft.
2644	4"	16 gauge	5 ft.
2649	5"	16 gauge	5 ft.

T304 S.S. CONCENTRIC REDUCERS



Part No.	Description
2685	1 1/2" x 2" Reducer, 2" overall length
2686	2" x 2 1/2" Reducer, 2" overall length
2630	2 1/2" x 3" Reducer, 2" overall length
2632	3" x 4" Reducer, 4" overall length

Please note: Overall length tolerance = +/- .2"

TIG WELD WIRES

Vibrant Performance now offers a wide array of TIG Weld Wires in several popular material grades and thicknesses.

Vibrant Weld Wire offers outstanding weld properties so that you can lay down a top quality bead.

Sold in cost effective 1lb. and 3lb. pre-packs. Only buy what you need!

Call to inquire about Bulk Quantities.



Material Grade	Rod Thickness	Rod Length	1lb Box Part No.	3lb Box Part No.
Stainless - ER308L	0.035" (0.9mm)	36"	29131	29133
	0.045" (1.2mm)	36"	29141	29143
	0.062" (1.6mm)	36"	29161	29163
Stainless - ER309L	0.035" (0.9mm)	36"	29231	29233
	0.045" (1.2mm)	36"	29241	29243
	0.062" (1.6mm)	36"	29261	29263
Aluminum - ER4043	0.062" (1.6mm)	36"	29461	29463
	0.09" (2.3mm)	36"	29491	29493
Aluminum - ER5356	0.062" (1.6mm)	36"	29561	29563
	0.09" (2.3mm)	36"	29591	29593
Chromoly - ER70S-2	0.045" (1.2mm)	36"	29741	29743
	0.062" (1.6mm)	36"	29761	29763
Chromoly - ER80S-2	0.045" (1.2mm)	36"	29841	29843
	0.062" (1.6mm)	36"	29861	29863