

QUALITY.

INNOVATION.

DESIGN.



2016 PRODUCT CATALOG

1ST EDITION

MADE IN USA

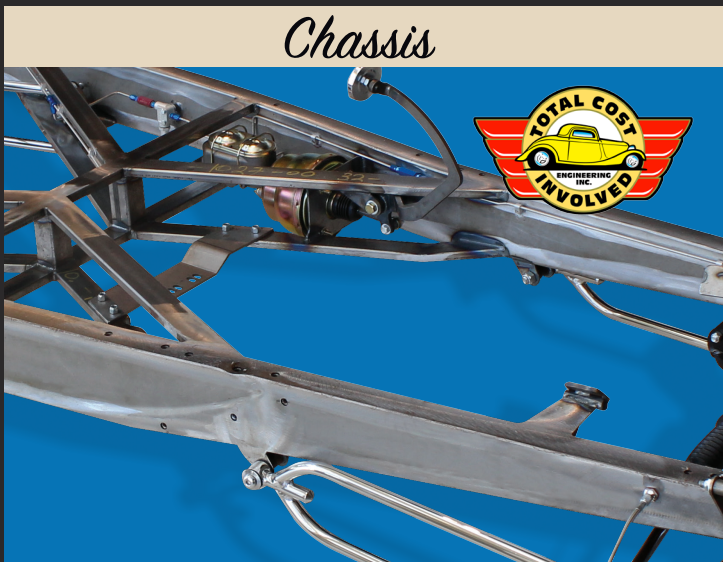
Instruments



Steering Columns



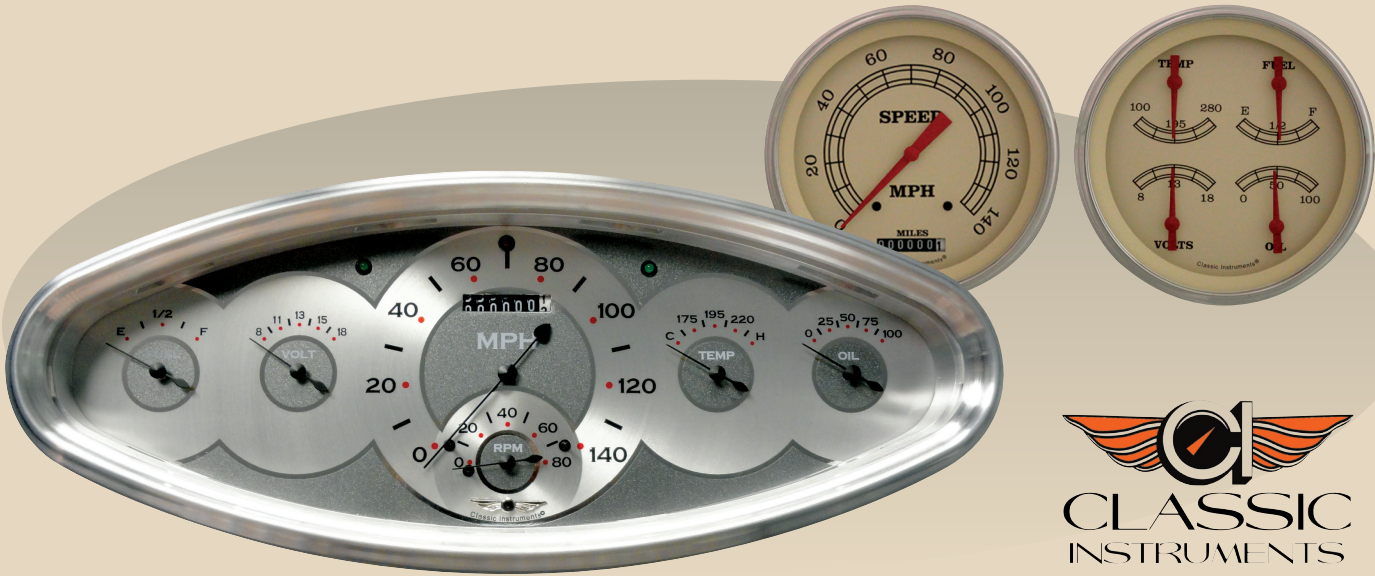
Chassis



Wheels

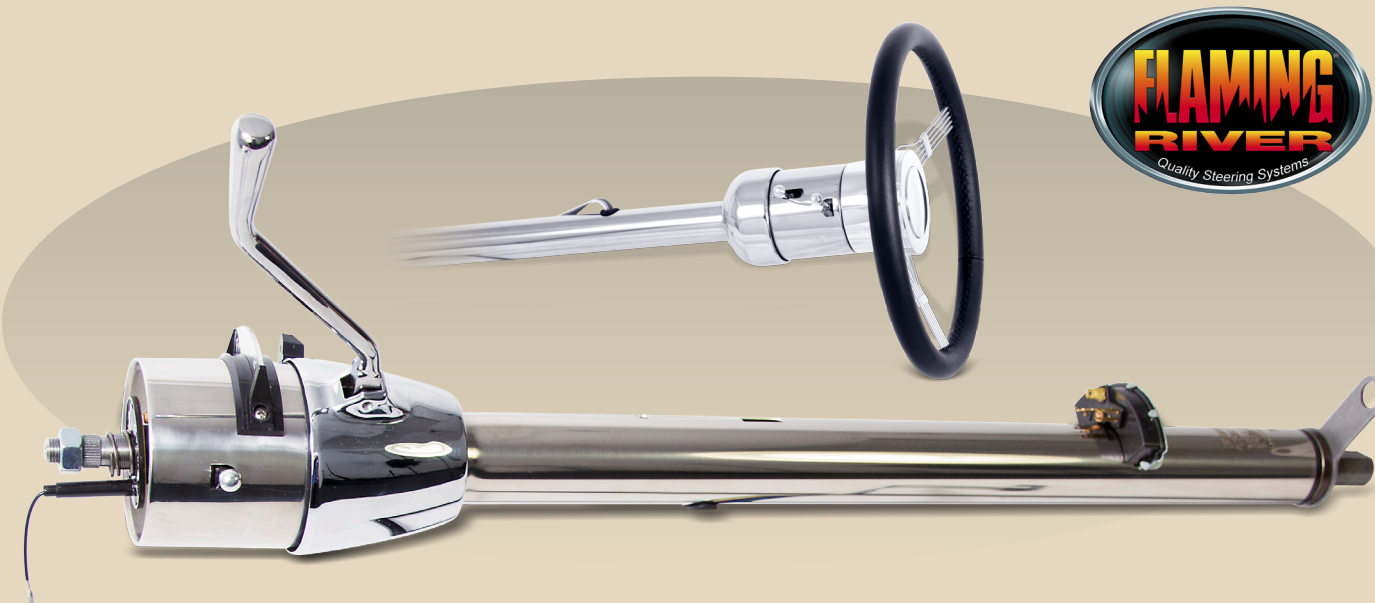


2016 PRODUCT CATALOG



PAGE 4

Classic Instruments has been a pioneer of aftermarket automotive performance products and instrumentation since 1977. Cutting edge features such as electronic programmable speedometer, vintage styled instrumentation equipped with modern electronic components, pre-packaged 5 and 6 gauge sets and SkyDrive GPS speedometer sending unit. Gauge “sets” include the necessary sending units.



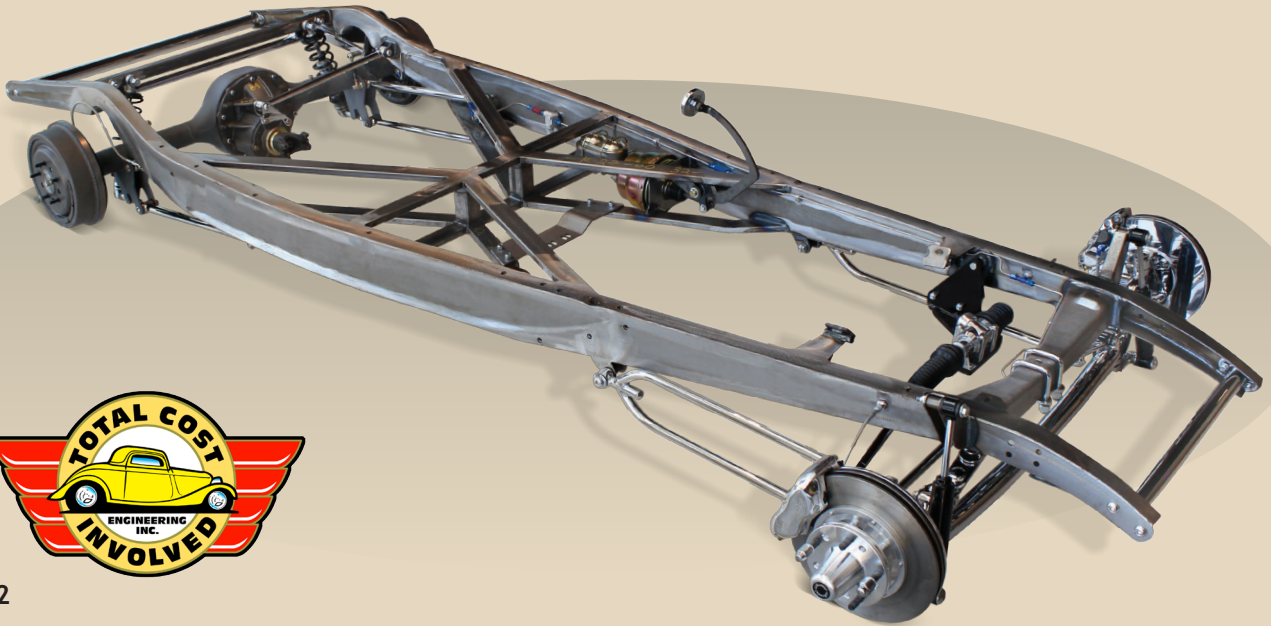
PAGE 14

Flaming River steering columns are made in the USA with all brand new parts, absolutely nothing is rebuilt! This ensures stringent quality standards, improves the design and offer long range product availability. Over the past 20 years, Flaming River has designed many products which have won SEMA’s Best New Product Award. If it doesn’t say Flaming River...It just isn’t good enough!



MADE IN USA

2016 PRODUCT CATALOG



PAGE 12

Total Cost Involved (TCI) 1932 chassis features a full-length boxed x-member frame, with the classic '32 side reveal detail as the original. This complete chassis has been engineered for strength, safety, performance, drivability, and has a great looking stance. This is the perfect chassis for the United Pacific 1932 Ford 5-window coupe steel body shell part numbers B20000-A, B20000-B, B20000-C, B20000-D.

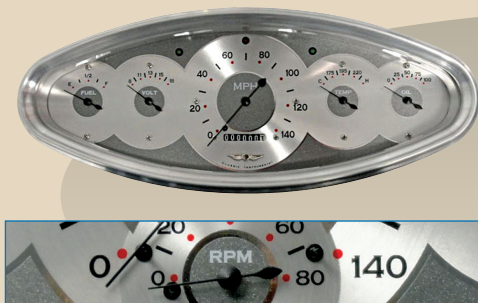


PAGE 16

Wheel Vintiques has been manufacturing steel wheels for restored classics, muscle cars and hot rods since 1966. All Wheel Vintiques wheels are made from high quality steel, and they are manufactured in the USA. Precise sizing and single bolt patterns make their O.E. wheels the best on the market. Special attention is taken in each step of the manufacturing process for the highest level of quality control. All chrome-plated wheels undergo a show quality triple chrome-plating process.



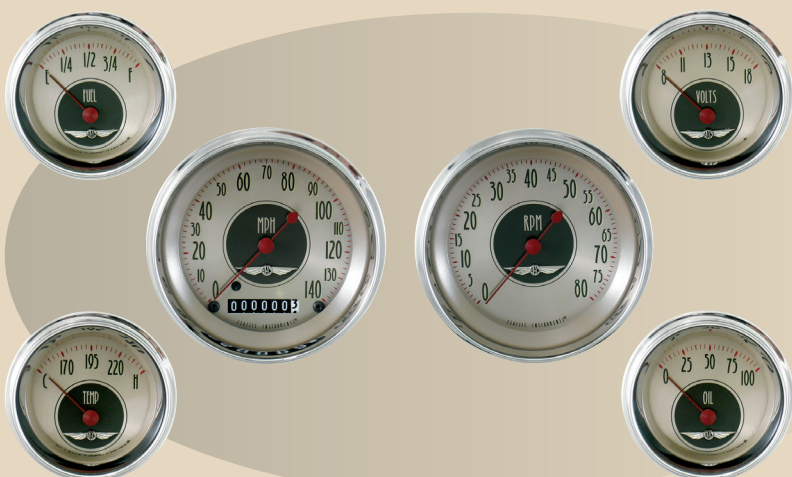
All American™ Package



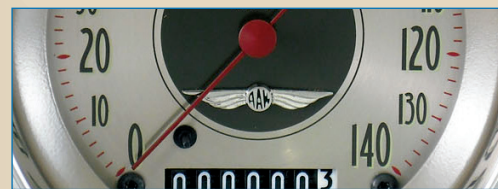
The All American Package is a self contained instrument panel featuring a uniquely machined bezel in a brushed nickel finish. The package includes an electronic 140 MPH speedometer, fuel (240-33), volt, temp and oil gauges, LED high beam, and turn signal indicators. LED illuminates the All American winged emblem. The 6400 includes an integrated 8,000 RPM tachometer. The unit comes complete with all necessary sending units and mounting hardware. Instrument panel measures approximately 12 1/4" wide by 5" high.

110021 All American Nickel 5 Gauge Package
110022 All American Nickel 6 Gauge Package

All American Nickel™ Series



The All American Nickel series is sure to look great in vehicles past and present. It features a spun metal dial face, rich brown accents, red indices, and the All American winged emblem. Deep red Teardrop pointers, curved glass, and stainless high step bezels complete the timeless design.



Series Details

Bezel: Stainless High Step
Glass: Curved
Pointer: Teardrop

110023 6 Gauge Set
(3 3/8" Speedo & Tach, 2 1/4" Fuel
(240-33), Oil, Temp, Volts)

Nostalgia VT™ Series

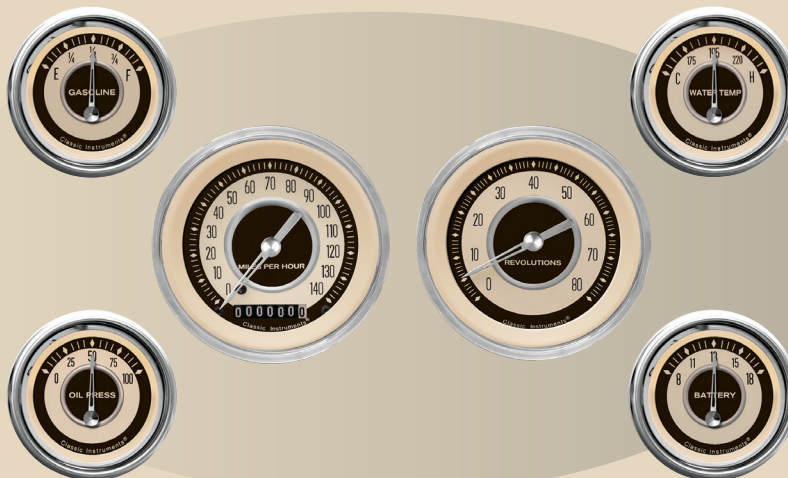
The Nostalgia VT series captures the essence of the golden age of motoring. A warm, cream face highlights the rich brown numerals and raised accent ring. This series features a chrome Speedster pointer, curved glass, and stainless high step bezels. This set is sure to convey the quality craftsmanship associated with days gone by.



110024 6 Gauge Set
(3 3/8" Speedo & Tach, 2 1/4" Fuel
(240-33), Oil, Temp, Volts)

Series Details

Bezel: Stainless High Step
Glass: Curved
Pointer: Speedster



INSTRUMENTS



Vintage® Series

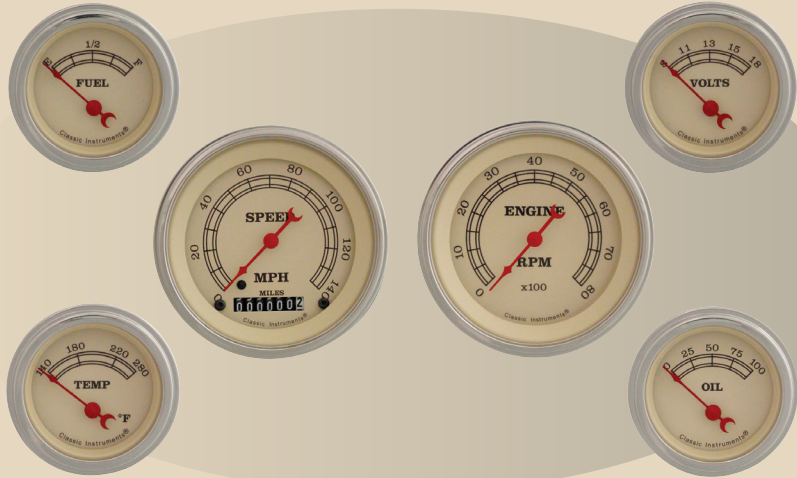
The Vintage series is the first design ever produced by Classic Instruments. The tan face with brown indices and a red Crescent Moon pointer is finished off by stainless low step bezels and flat glass. This series provides a truly classic look.



Series Details

Bezel: Stainless Low Step
Glass: Flat
Pointer: Crescent Moon

- 110025 6 Gauge Set
(3 3/8" Speedo & Tach, 2 1/8" Fuel (240-33), Oil, Temp, Volts)



Hot Rod® Series

One of the first designs offered by Classic Instruments, the Hot Rod series is the definitive expression of tradition and a true classic. Featuring bright white numerals and indices on a rich black dial face, white Pool Cue pointers, stainless low step bezels, and flat glass.



Series Details

Bezel: Stainless Low Step
Glass: Flat
Pointer: Pool Cue

- 110027 5 Gauge Set
(3 3/8" Speedo & 2 1/8" Fuel (240-33), Oil, Temp, Volts)
110028 6 Gauge Set (3 3/8" Speedo & Tach, 2 1/8" Fuel (240-33), Oil, Temp, Volts)

V8 Speedster™ Series

The V8 Speedster series pays tribute to an integral part of American hot rod history. This series features a rich black face, on an engine turned metal dial, accented by embossed vertical lines. Detailed metal finish is shown in the numerals, indices, and accent lines which highlight a chrome V8 emblem. This series is completed by a chrome Speedster pointer, laser etched diffuser ring, curved glass, and stainless high step bezels. Designed by Tom Gale, former chief designer for Daimler Chrysler and proudly installed on United Pacific's, Roy Brizio built 1932 Ford 5-Window Coupe.



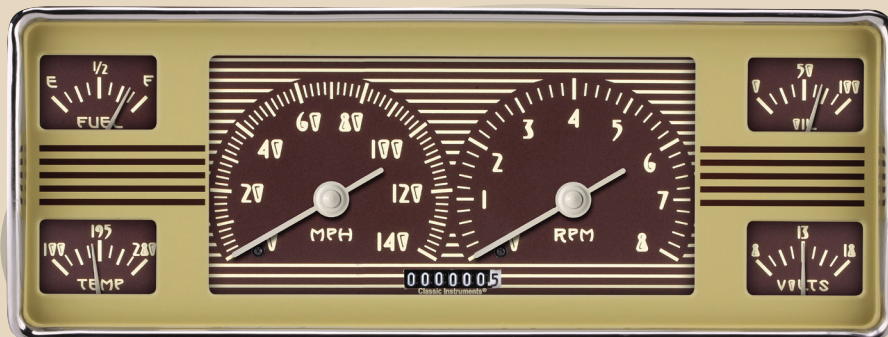
- 110029 5 Gauge Set
(3 3/8" Speedo & 2 1/8" Fuel (240-33), Oil, Temp, Volts)
110030 6 Gauge Set
(3 3/8" Speedo & Tach & 2 1/8" Fuel (240-33), Oil, Temp, Volts)

Series Details

Bezel: Stainless High Step
Glass: Curved
Pointer: Speedster



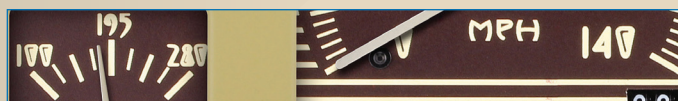
1940 Ford Original Style 6 in 1 Cluster



This 1940 Ford Direct-Fit package with "Original Styled" graphics, includes a Speedometer, Tachometer, Fuel (240-33), Oil, Temp, and Volt gauges in an injection molded ABS housing. LED lighting provides superior illumination for night time driving and is adjustable using the built in dimmer. Green LED Halo turn signals are installed in the left and right sides of the instrument cluster with a red LED Halo high beam indicator at the top of the cluster. The package is finished with a polished stainless steel bezel and glass lens. Zeus Speedometer Technology (ZST) provides calibration at the touch of a button and ensures the smoothest pointer operation. ZST accepts any known speed signal such as a pulse generator, VSS, ECM, or GPS without the need for an additional interface.

110007 1940 Ford Deluxe Passenger Car 6 Gauge Set
(Speedo, Tach, Temp, Fuel, Oil, Volts)

Dash bezel not included

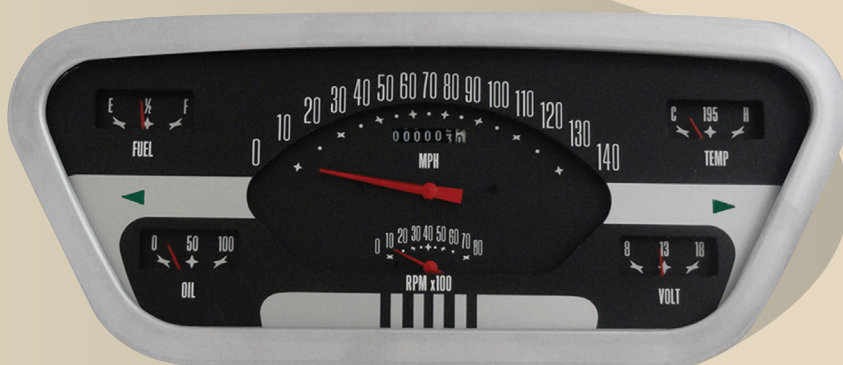


1953-55 Ford F-100 Truck Package

The 1953-55 Ford F-100 package is a direct fit, all inclusive upgrade to your truck. The unit includes a 140 MPH speedometer, 8,000 RPM tachometer, fuel (75-10), oil, temp, and volt gauges installed in a housing, and accented by a machined aluminum bezel. The completely assembled package features push button calibration, LED illumination, integrated turn signals, a blue Halo high beam indicator, wiring harness, and all necessary sending units.



110005 1953-55 Original Style F100 Black Package
(Speedo, Tach, Fuel, Oil, Temp, Volt)

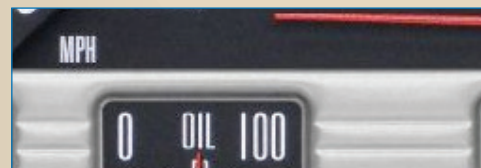


1956 Ford F-100 Truck Package

The 1956 Ford F-100 package is a direct fit all inclusive upgrade to your truck. The unit includes a 120 MPH speedometer, 8,000 RPM tachometer, fuel (75-10), oil, temp, and volt gauges. This completely assembled unit includes the bezel, housing, wiring harness and all necessary sending units. Features include push button calibration, LED illumination, integrated turn signals and a red Halo high beam indicator.



Dash bezel not included



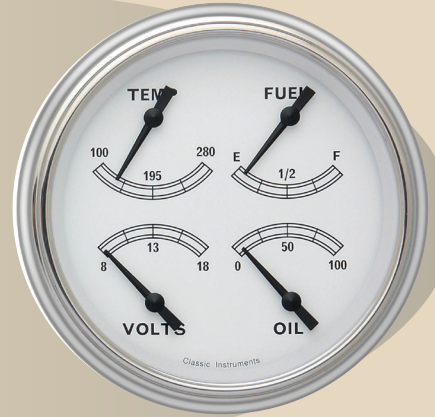
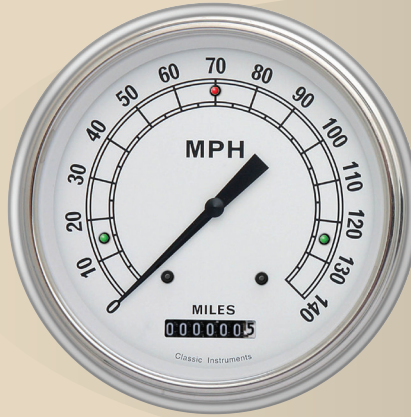
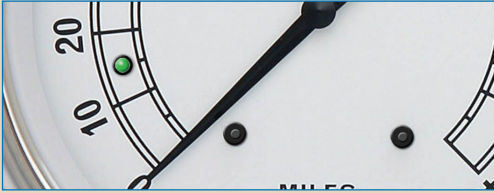
110006 Black 1956 F100 Black Package
(Speedo, Tach, Fuel, Oil, Temp, Volt)

INSTRUMENTS



1951-52 Chevy Car Package

The 1951-52 Chevy Car Package features a 4 1/2" quad gauge (Speedometer, fuel (0-30), oil, temp, volts). This set includes LED indicator lights (red high beam & green turn signals) in the speedometer face, model specific trim rings, mounting hardware, and all necessary sending units. Fuel sending unit not included, fuel gauge is calibrated to stock 0-30 ohms.



110010 1951-52 Classic White Series
(Speedometer, fuel (0-30), oil, temp, volts)

1955-56 Chevy Car Bel Era™ Package



Dash bezel not included

The package includes a 140 MPH speedometer and 8,000 RPM tachometer along with fuel (0-30), oil, temp, and volt gauges on a textured face with smooth sweep areas. This unit is completely assembled and ready to install into your existing bezel with all necessary sending units, wiring harness, and installation hardware. Bezel not included. Optional Gear Indicator insert shown is not included. Fuel sending unit not included, fuel gauge is calibrated to stock 0-30 ohms.



110011 1955-56 Chevy Car Bel Era™ Package
(Speedometer, Tach, fuel (0-30), oil, temp, volts)

1957 Chevy Car Package

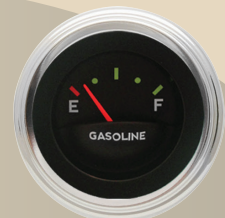
The '57 Chevy Package features a 140 MPH speedometer, 8,000 RPM tachometer, fuel (0-30), oil, temp, and volt gauges. The package includes model specific mounting brackets, electrical connections, and necessary sending units. Dash housing not included. Package does not include fuel sending unit, fuel gauge is calibrated to stock 0-30 ohms.



110012 1957 Chevy Car Package Authentic Black Package
(Speedometer, Tach, fuel (0-30), oil, temp, volts)



Dash bezel not included



INSTRUMENTS

1959-60 Full Size Chevy Car Package



Dash bezel not included

The 1959-60 Full Size Chevy Package features a 4 1/2" speedometer with red LED high beam and green turn signal indicators mounted in the face. Auxiliary gauges include 2 1/2 in. fuel (0-30), oil, temp, and volt. The package comes complete with all necessary sending units, mounting hardware, and model specific adapter rings for installation into your existing stock dash panel. Fits 1959-60 Bel Air, El Camino, and Impala. Dash housing not included. Fuel sending unit not included, fuel gauge is calibrated to stock 0-30 ohms.

110013 1959-60 Chevy Car All American Package
(Speedometer, fuel (0-30), oil, temp, volts)

1965-66 Mustang Package



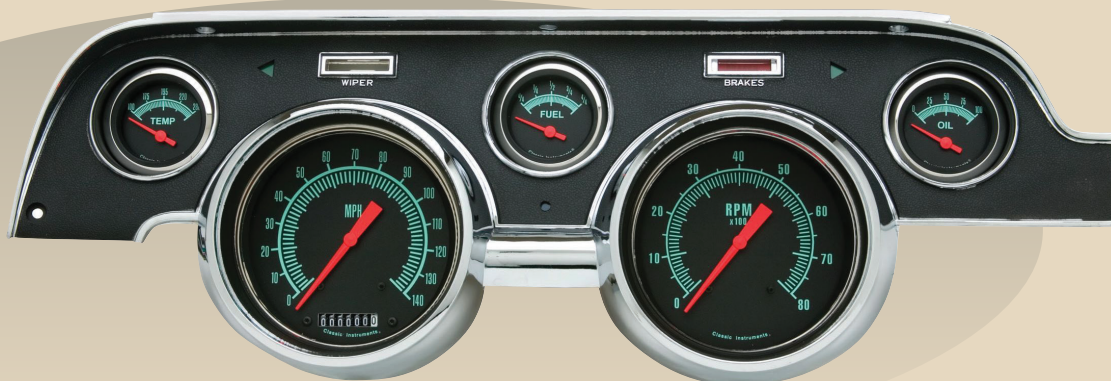
Dash bezel not included

Update the interior of your classic 1965-66 Mustang with your favorite gauges from Classic Instruments. The set includes fuel (75-10), oil, temp, and volt gauges and Speedtacular (speedometer & tachometer combination) with a red Halo high beam indicator. The package is complete with necessary sending units, turn signal bulbs, and a gauge mounting bracket designed to work with your existing stock or reproduction bezel.



110008 1965-66 Mustang G-Stock Series

1967-68 Mustang Package



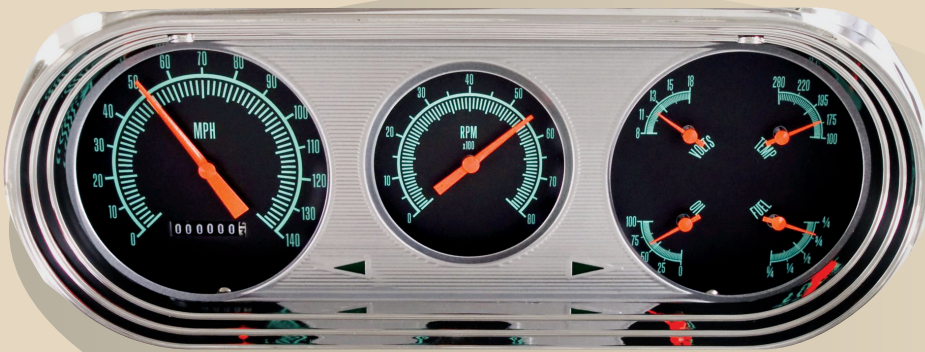
110009 1967-68 Mustang G-Stock Series

The 1967-68 Mustang Package is a great way to personalize the interior of your classic Pony car! The set includes a speedometer, tachometer, oil, fuel (75-10), and temp gauges completely assembled and mounted in a standard black camera case OEM style bezel. The unit is pre-wired and includes all necessary sending units and mounting hardware.

INSTRUMENTS



1963-65 Nova Package



110014 1963-65 Nova G-Stock Package
(Speedometer, Tach, fuel (0-30), oil, temp, volts)

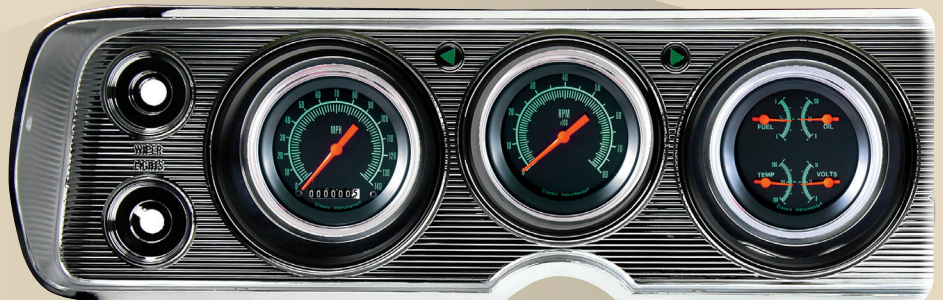
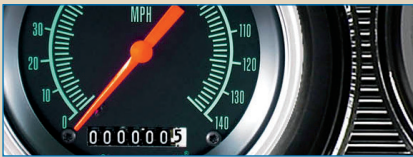
Dash bezel not included

The 1963-65 Nova Package is a great addition to your classic Nova project. It includes a speedometer, tachometer, and Quad (fuel (0-30), oil, temp, and volt) gauge. The package comes complete and ready to install into your existing bezel with a new lens, wiring harness, and all necessary sending units. Dash bezel and light diffuser plate not included. Fuel sending unit not included, fuel gauge is calibrated to stock 0-30 ohms.



1964-65 Chevelle Package

The 1964-65 Chevelle Package includes a 3 3/8" speedometer with a blue Halo high beam indicator, tachometer, and Quad (fuel (0-30), oil, temp, & volt) gauge. This set is complete and ready to install into your existing dash bezel using the included adapter panel. Mounting hardware, wiring harness, and all necessary sending units are included. This set is a great way to upgrade the interior of your classic Chevelle. Dash bezel not included. Fuel sending unit not included, fuel gauge is calibrated to stock 0-30 ohms.



110015 1964-65 Chevelle G-Stock Package
(Speedometer, Tach, fuel (0-30), oil, temp, volts)

Dash bezel not included

This 1967-68 Camaro Package features a 4 1/2" Speedtacular (speedometer & tachometer combination) with LED turn signals in the face and a Quad (fuel (0-90), oil, temp, volts) gauge mounted in a high quality OEM style dash bezel. The assembled unit comes complete with mounting hardware, wiring harness, and all necessary sending units. This set will also "fit" 1967-68 Pontiac Firebirds! High beam lens assembly not included. Fuel sending unit not included, fuel gauge is calibrated to stock 0-90 ohms.

1967-68 Camaro Package



110016 1967-68 Camaro G-Stock Package
(Speedometer, Tach, fuel (0-30), oil, temp, volts)



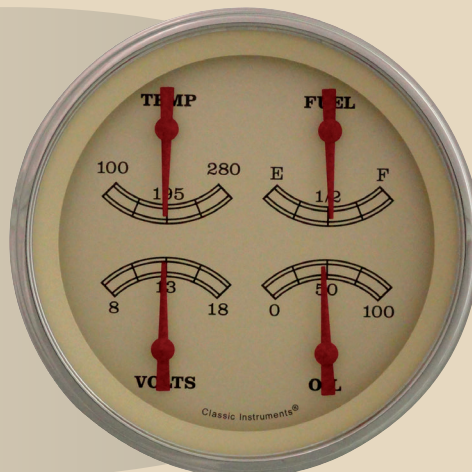
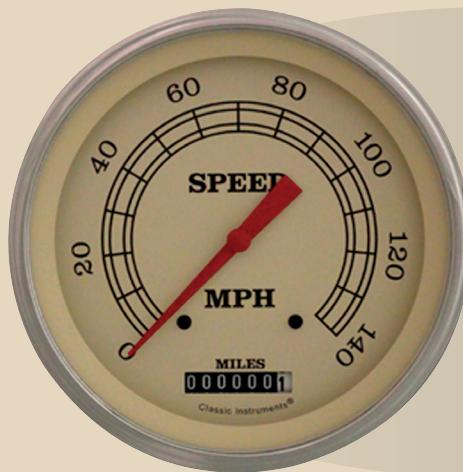
INSTRUMENTS

1947-53 GM Pick-up Package

The 1947-53 Chevy Truck set includes a Speedometer and Quad gauge with (fuel (240-33), oil, temp, volts). The package includes model specific trim rings, mounting hardware, and all sending units. Fuel sending unit included, fuel gauge is calibrated to 240-33 ohms.



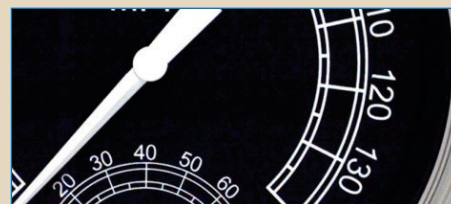
110017 1947-53 GM Pick-up Vintage Package
(Speedometer, Tach, fuel (0-30), oil, temp, volts)



1954-55 Chevy Truck Package



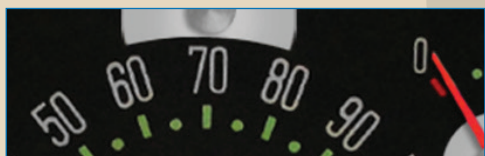
The 1954-55 First Series Chevy Truck Package includes a 4 5/8" Speedometer and Quad gauge (fuel (240-33), oil, temp, volts) and your choice of a speedometer or Speedtachular (speedometer & tachometer combination gauge). The package includes model specific trim rings with LED turn signal and high beam indicator lights, mounting hardware, and all sending units. Fuel sending unit included, fuel gauge is calibrated to 240-33 ohms.



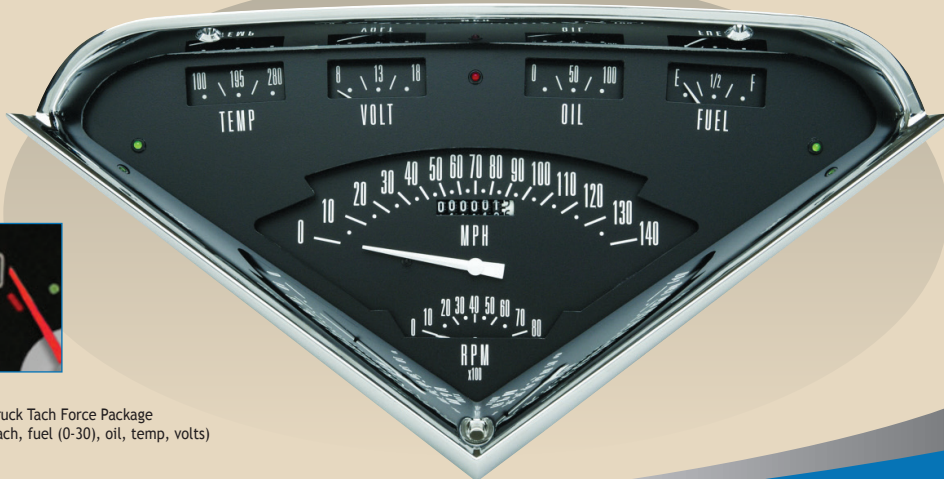
110018 1954-55 Chevy Truck Traditional Package
(Speedometer, Tach, fuel (0-30), oil, temp, volts)

1955-59 Chevy Truck Tach Force™ Package

The Tach Force package features a dual layer design with a 140 MPH speedometer, 8,000 RPM tachometer, fuel (0-30), oil, temp, and volt gauges with LED illumination and integrated LED turn signal and high beam indicators. The completely assembled and ready to install package includes the bezel, wiring harness, installation hardware and all necessary sending units. This product is a great way to update your 1955-59 Chevy pick-up, Suburban, or panel truck. Fuel sending unit not included, fuel gauge is calibrated to stock 0-30 ohms.



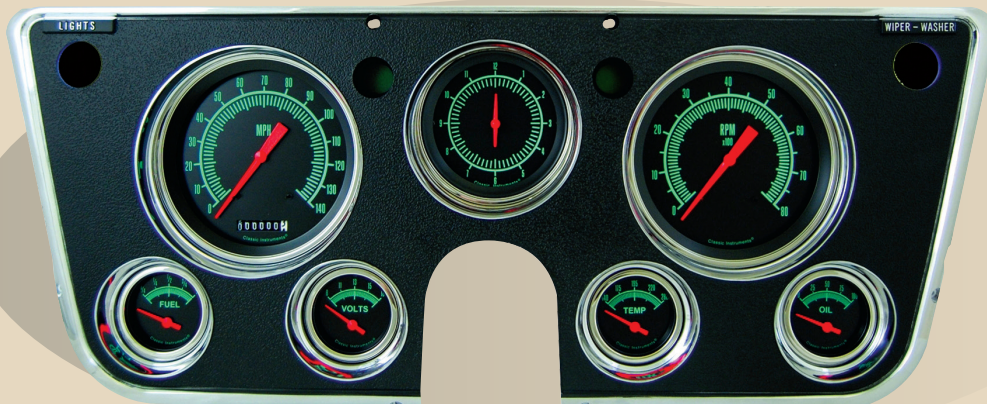
110019 1955-59 Chevy Truck Tach Force Package
(Speedometer, Tach, fuel (0-30), oil, temp, volts)



INSTRUMENTS



1967-72 Chevy Truck Package



110020 1967-72 Chevy Truck G-Stock Package (Speedometer, Tach, fuel, oil (0-90), temp, volts, clock)

The 1967-72 Chevy Truck Package is a completely assembled, ready to install, unit for use with your Chevy or GMC truck. The instrument panel includes a speedometer with a blue LED high beam indicator in the face, tachometer, fuel (0-90), oil, temp, and volt gauges, and a quartz clock with a push button reset. This set includes the dash bezel, pre-wired electrical connections with a wiring harness, mounting hardware, and all necessary sending units. Fuel sending unit not included, fuel gauge is calibrated to stock 0-90 ohms.

Sending Units & Accessories

Sky Drive GPS Speedometer Sending Unit

The Sky Drive GPS speedometer sending unit uses GPS triangulation to provide an accurate speed measurement. It does not require a transmission sending unit and can accommodate speedometers that measure speed in MPH, KPH, or Knots.



110031 Sky Drive GPS Speedometer Sending Unit

SN74Z Push Button Interface Module

Calibration with the push of a button...

The SN74Z is necessary when using a Classic Instruments speedometer with an Electronic Control Module (ECM) or Vehicle Speed Sensor (VSS) signal. The unit features in-line installation between the transmission pulse signal or ECM speed output and your electronic speedometer. With the SN74Z you can calibrate your speedometer easily & accurately by simply pushing a button, driving a measured mile, and pushing the button again.



110033 Push Button Interface Module



110032



110034



110035



110036

Sending Units & Fittings.

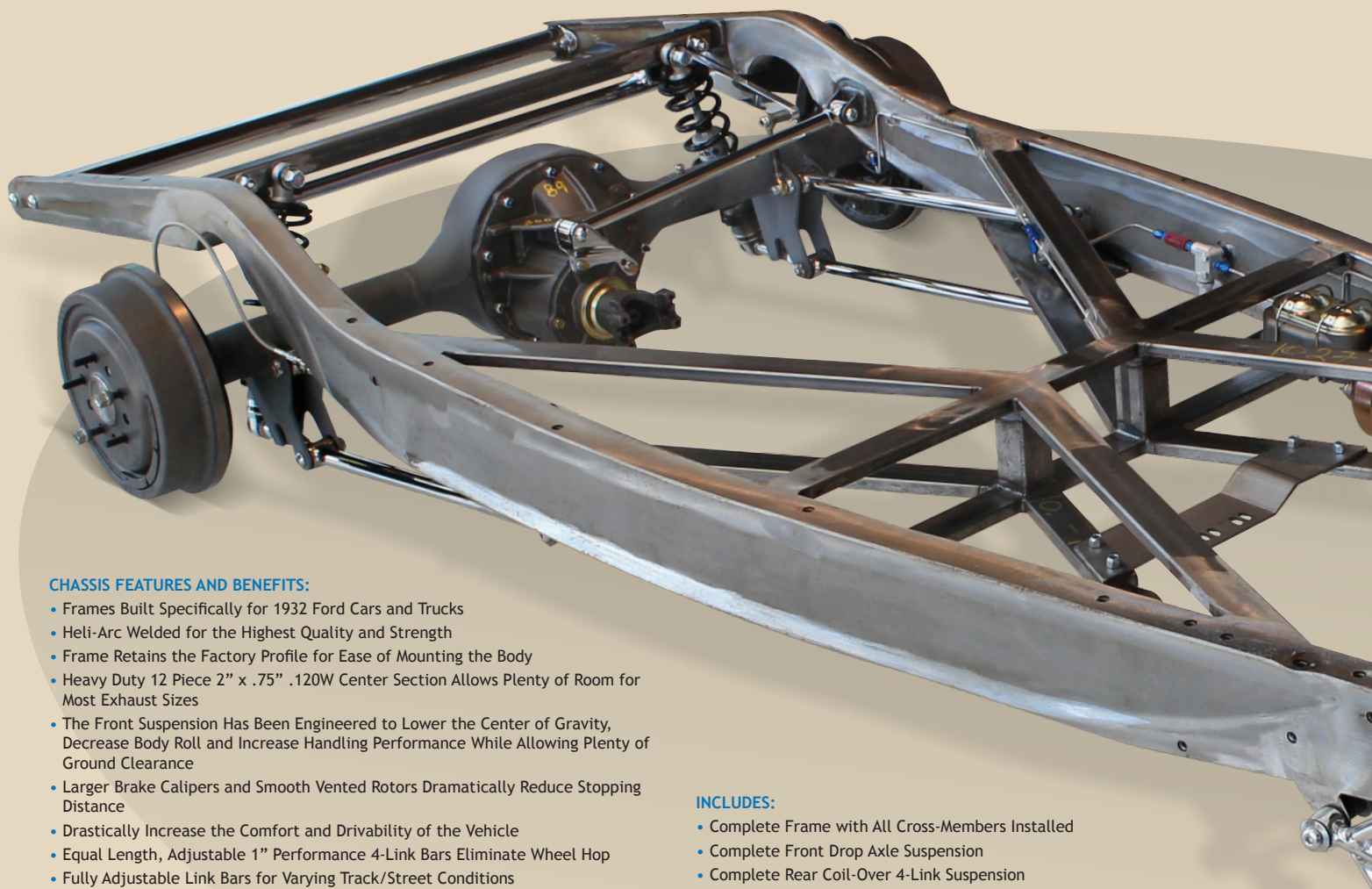
- 110032 Temperature Sender, 12mm self sealing threads
- 110034 Temperature Sender, 3/8 NPT self sealing threads
- 110035 Oil pressure sending unit bushing kit necessary for converting a 3/8" NPT sender outlet to a 1/4" NPT sender outlet
- 110036 Fuel Tank Sending Unit with resistance range of 0-30 ohms





CHASSIS

1932 Ford



CHASSIS FEATURES AND BENEFITS:

- Frames Built Specifically for 1932 Ford Cars and Trucks
- Heli-Arc Welded for the Highest Quality and Strength
- Frame Retains the Factory Profile for Ease of Mounting the Body
- Heavy Duty 12 Piece 2" x .75" .120W Center Section Allows Plenty of Room for Most Exhaust Sizes
- The Front Suspension Has Been Engineered to Lower the Center of Gravity, Decrease Body Roll and Increase Handling Performance While Allowing Plenty of Ground Clearance
- Larger Brake Calipers and Smooth Vented Rotors Dramatically Reduce Stopping Distance
- Drastically Increase the Comfort and Drivability of the Vehicle
- Equal Length, Adjustable 1" Performance 4-Link Bars Eliminate Wheel Hop
- Fully Adjustable Link Bars for Varying Track/Street Conditions
- 3 Height Adjustments Available on the Axle Brackets (1" Increments)
- Energy Suspension Polyurethane Bushings Help Insulate Road Noise
- New Currie Sportsman 9-Plus (Made of 65,000 psi Nodular Iron) 3rd Member Case is Lightweight and Strong
- New Case Features 3.062 Carrier Bearings for Additional Strength
- 3" O.D. x .188" Wall 10026 D.O.M. (Drawn Over Mandrel) Axle Tubes Keep Them From Twisting Under High HP Applications
- Late/Large Billet Steel 9" Ford Plus Bearing Ends for Strength
- 31 Spline 1541 Forged Induction Heat-Treated Alloy Axles will Withstand 600HP
- Axles are Made in the U.S.A. Using Tapered Roller Bearings for Strength and Durability
- Axles are Available with Either 1/2" or 7/16" Wheel Studs on 4.5" (Ford) or 4.75" (Chevy) Bolt Patterns
- 1330 Yoke is Strong, Lightweight and Common so Driveshaft Options will be Plentiful
- 56" Axle-Flange to Axle-Flange Width is Standard with Custom Widths are Available
- Your Choice of Gears (From 3.00-4.56)
- Chassis is Made in the USA

INCLUDES:

- Complete Frame with All Cross-Members Installed
- Complete Front Drop Axle Suspension
- Complete Rear Coil-Over 4-Link Suspension
- Small Block Engine Brackets Mounted (Choose SBF or SBC)
- Stainless Braided Brake Hoses
- Body & Hood Latch Brackets
- Front & Rear Spreader Bars
- Automatic Transmission Cross-Member Mounted
- Currie: 31 Spline Axles and Rear 11" Drum Brakes
- Currie: New Sportman Nodular Iron Case (with 60,000 Mile Warranty)
- Currie: Complete 9 Inch Housing with Your Choice of Gear Set (3.00 - 4.56)
- Under Floor Pedal Assembly with Master Cylinder and Booster (Pedal Bracket Welded to Chassis)
- Fully Plumbed Custom Steel Brake Lines Complete with Wilwood Residual Check Valves & Proportioning Valve



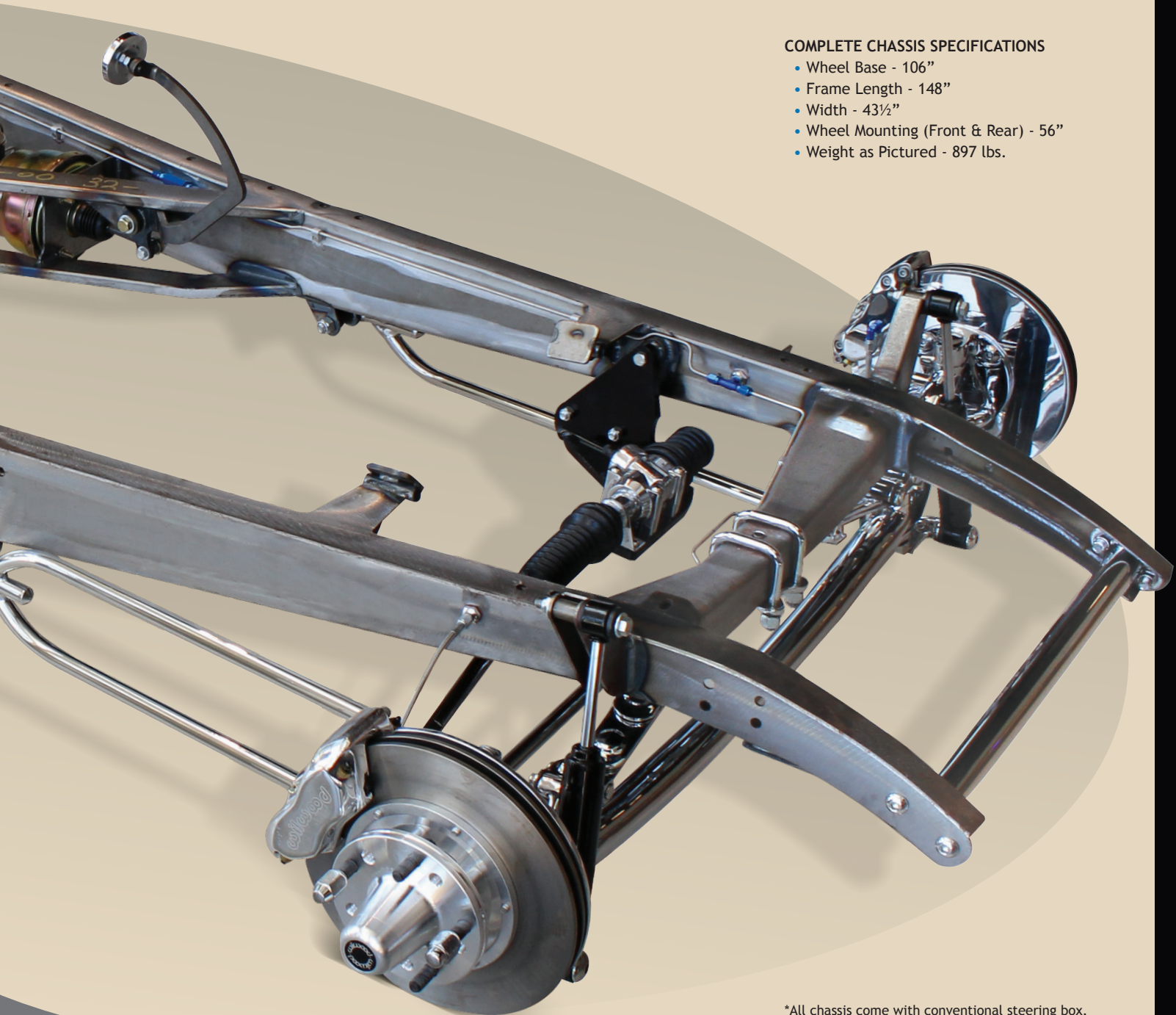
Item Number	Description	Finish
110003	Automatic Chassis	Plain Suspension
110004	Automatic Chassis	Chrome & S.S. Suspension
110103	Stick Shift Chassis	Plain Suspension
110104	Stick Shift Chassis	Chrome & S.S. Suspension



Total Cost Involved '32 chassis features a full-length boxed x-member frame with the classic '32 side reveal detail as the original. Front suspension includes a dropped axle, leaf spring, shocks, radius rods, and disc brakes. The rear suspension includes RideTech coil-over shocks, 4-link suspension, 9" ford axle & third member, and rear 11" drum brakes. The frame is bare steel with suspension parts finished in a beautiful combination of chrome and polished stainless steel, or you can order a plain suspension package ready to paint. This complete chassis has been engineered for strength, safety, performance, drivability and has a great looking stance. This is the perfect chassis for the United Pacific 1932 Ford 5-window coupe steel body shells - item # B20000-A, B20000-B, B20000-C, B20000-D.

COMPLETE CHASSIS SPECIFICATIONS

- Wheel Base - 106"
- Frame Length - 148"
- Width - 43½"
- Wheel Mounting (Front & Rear) - 56"
- Weight as Pictured - 897 lbs.



*All chassis come with conventional steering box.
Chassis photo shows optional rack & pinion steering.



STEERING COLUMNS

1960-66 & 1967-72 Chevy & GMC Truck Shift Tilt Steering Columns

These Column Shift Tilt Columns are designed to fit the original dash mount and even accept the original rag joint flange or factory steering shaft. The classic applications use our 2 inch diameter column to match the existing mounting holes. Choose from paintable mill finish or polished stainless.



110049	1960-66 Chevy & GMC Truck for Early Power Steering Box	Mill Finish
110050	1960-66 Chevy & GMC Truck for Early Power Steering Box	Polished Stainless Steel
110051	1960-66 Chevy & GMC Truck for Late Power Steering Box	Mill Finish
110052	1960-66 Chevy & GMC Truck for Late Power Steering Box	Polished Stainless Steel
110120	1967-72 Chevy & GMC Truck	Mill Finish
110121	1967-72 Chevy & GMC Truck	Polished Stainless Steel

1967-68 Camaro, 1968-72 Chevelle, 1967 Nova Tilt Floor Shift Steering Columns

These Street Machine Tilt Columns are designed to fit the original dash mount and even accept the original rag joint fange or factory steering shaft. The classic applications use our 2 inch diameter column to match the existing mounting holes. Choose from paintable mill finish or polished stainless.

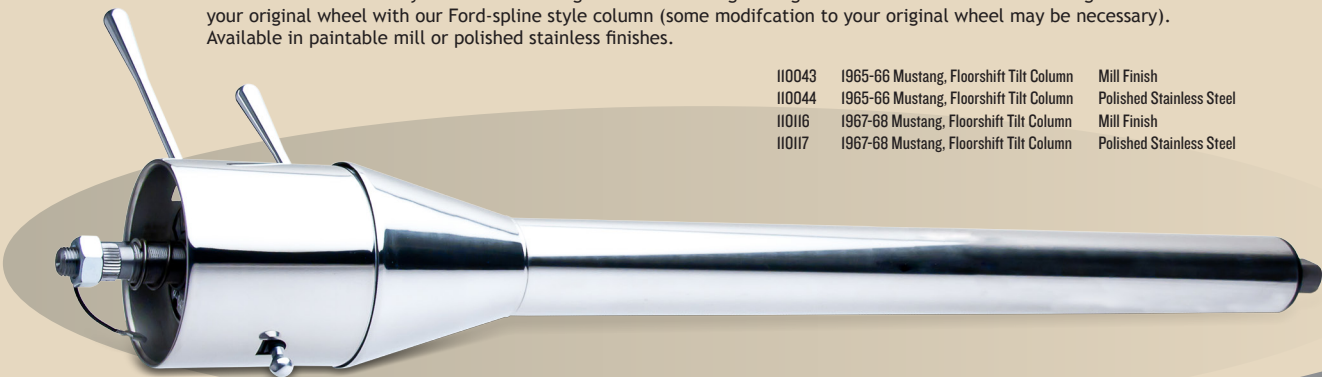
110047	Camaro / Chevelle Tilt Column 32" I, 1" Shaft, 48 Splines	Mill Finish
110048	Camaro / Chevelle Tilt Column 32" I, 1" Shaft, 48 Splines	Polished Stainless Steel
110122	Camaro / Chevelle Tilt Column 32" I, 1" DD Shaft	Mill Finish
110123	Camaro / Chevelle Tilt Column 32" I, 1" DD Shaft	Polished Stainless Steel
110045	1967 Nova Floorshift Tilt Column	Mill Finish
110046	1967 Nova Floorshift Tilt Column	Polished Stainless Steel



1965-70 Ford Mustang Tilt Steering Columns

This column adds tilt to your Classic Mustang while maintaining an original look. This all-new Tilt Steering Column uses your original wheel with our Ford-spline style column (some modification to your original wheel may be necessary). Available in paintable mill or polished stainless finishes.

110043	1965-66 Mustang, Floorshift Tilt Column	Mill Finish
110044	1965-66 Mustang, Floorshift Tilt Column	Polished Stainless Steel
110116	1967-68 Mustang, Floorshift Tilt Column	Mill Finish
110117	1967-68 Mustang, Floorshift Tilt Column	Polished Stainless Steel



STEERING COLUMNS



Tilt Floor Shift Steering Columns



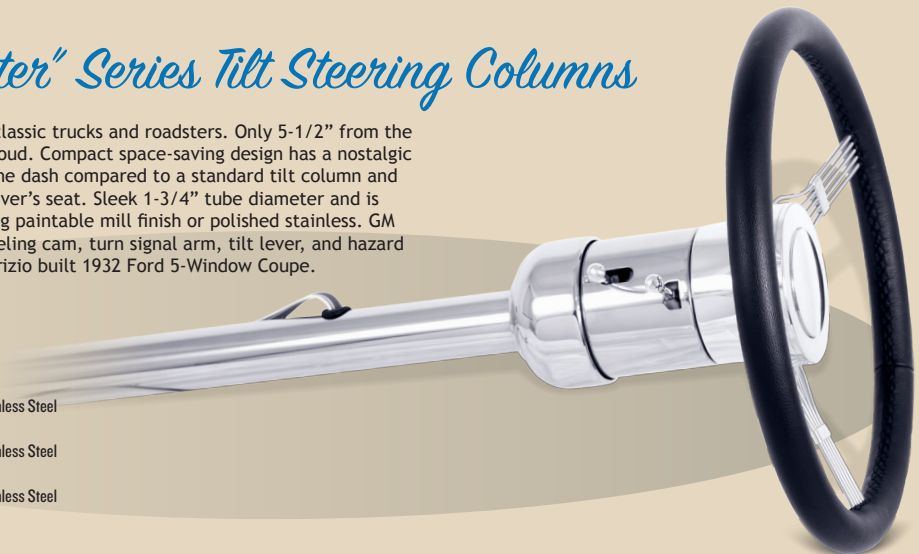
110037	Floorshift Tilt Column, 2" Dia., 33" L, 1" DD Shaft	Mill Finish
110038	Floorshift Tilt Column, 2" Dia., 33" L, 1" DD Shaft	Polished Stainless Steel
110039	Floorshift Tilt Column, 2" Dia., 30" L, 1" DD Shaft	Mill Finish
110040	Floorshift Tilt Column, 2" Dia., 30" L, 1" DD Shaft	Polished Stainless Steel
110041	Floorshift Tilt Column, 2" Dia., 32" L, 1" DD Shaft	Mill Finish
110042	Floorshift Tilt Column, 2" Dia., 32" L, 1" DD Shaft	Polished Stainless Steel

This sleek tilt column is designed for use with a floor shifter. 2" tube diameter and a compact shroud for a unique, new custom look. Each column comes complete with a billet aluminum dress up kit, GM turn signal with hazards, a 4/4" inch connector and canceling cam. Standard shaft size is 1 inch DD and choose from paintable mill finish or polished stainless.

"Bella Roadster" Series Tilt Steering Columns

With 5 position tilt, this new column is ideal for classic trucks and roadsters. Only 5-1/2" from the bottom of the dish to the top of the column's shroud. Compact space-saving design has a nostalgic look and full tilt functionality. Fits snug against the dash compared to a standard tilt column and allows for an additional 2" of clearance in the driver's seat. Sleek 1-3/4" tube diameter and is available in a variety of lengths. Finishes including paintable mill finish or polished stainless. GM 4-1/4" wiring connector, horn functionality, canceling cam, turn signal arm, tilt lever, and hazard knob. Proudly installed on United Pacific's, Roy Brizio built 1932 Ford 5-Window Coupe.

110053	Bella Roadster Tilt Column, 28" L	Mill Finish
110054	Bella Roadster Tilt Column, 28" L	Polished Stainless Steel
110055	Bella Roadster Tilt Column, 30" L	Mill Finish
110056	Bella Roadster Tilt Column, 30" L	Polished Stainless Steel
110118	Bella Roadster Tilt Column, 32" L	Mill Finish
110119	Bella Roadster Tilt Column, 32" L	Polished Stainless Steel



Hot Rod

A Reproduction O.E.M Ford Wheel. Ideal for traditional hot rods and Classic car applications.
Will fit factory 8½" Ford caps. Comes in various 5 lug bolt patterns.



14 Series Gennie Primer

- 110058 15 x 6 GENNIE Multi Lug 5-4.5, 4.75, 3-3/4" back space
- 110059 15 x 7 GENNIE Multi Lug 5-4.5, 4.75, 3-3/4" back space
- 110060 16 x 6 GENNIE Multi Lug 5-4.5, 4.75, 3-3/4" back space
- 110061 16 x 7 GENNIE Multi Lug 5-4.5, 4.75, 4" back space

Color shown not included. Wheel center is shipped in primer.

15 Series Gennie Chrome Outer, Bare Metal Center

- 110062 15 x 6 GENNIE Multi Lug 5-4.5, 4.75, 3-3/4" back space
- 110063 15 x 7 GENNIE Multi Lug 5-4.5, 4.75, 3-3/4" back space
- 110064 16 x 6 GENNIE Multi Lug 5-4.5, 4.75, 3-3/4" back space
- 110065 16 x 7 GENNIE Multi Lug 5-4.5, 4.75, 4" back space



Color shown not included. Wheel center is shipped in primer.



16 Series Gennie Chrome

- 110066 5 x 6 GENNIE Multi Lug 5-4.5, 4.75, 3-3/4" back space
- 110067 15 x 7 GENNIE Multi Lug 5-4.5, 4.75, 3-3/4" back space
- 110068 16 x 6 GENNIE Multi Lug 5-4.5, 4.75, 3-3/4" back space
- 110069 16 x 7 GENNIE Multi Lug 5-4.5, 4.75, 4" back space



20 Series Solid Primer

- 110070 14 x 7 SOLID Multi Lug 5-4.5, 4.75, 4-1/2" back space
- 110071 15 x 7 SOLID Multi Lug 5-4.5, 4.75, 4-1/4" back space

Color shown not included. Wheel center is shipped in primer.

21 Series Solid Chrome Outer, Bare Metal Center

- 110072 14 x 6 SOLID Multi Lug 5-4.5, 4.75, 4" back space
- 110073 15 x 7 SOLID Multi Lug 5-4.5, 4.75, 4-1/4" back space



Color shown not included. Wheel center is shipped in primer.



22 Series Solid Chrome

- 110074 14 x 7 SOLID Multi Lug 5-4.5, 4.75, 4" back space
- 110075 15 x 7 SOLID Multi Lug 5-4.5, 4.75, 4-1/4" back space

Hubcaps, center caps and trim rings are not included with wheels.

WHEELS



Mustang



55 Series Ford Styled Steel Chrome

110080 14 x 5 STYLED STEEL Lug 5-4.5, 3-3/4" back space
110081 5 x 7 STYLED STEEL Lug 5-4.5, 4-1/4" back space

54 Series Magnum 500 Chrome

110082
15 x 7 MAGNUM 500 Lug 5-4.5, 4-1/4" back space
110083
15 x 8 MAGNUM 500 Lug 5-4.5, 4-1/2" back space
110084
15 x 10 MAGNUM 500 Lug 5-4.5, 5" back space



53 Series GT Rallye Chrome

110085 14 x 6 GT RALLYE Lug 5-4.5, 4" back space
110086 15 x 7 GT RALLYE Lug 5-4.5, 4-1/4" back space



Camaro & GM Rallye

60's Style 5 Spoke Steel



30 Series Corvette Rallye Silver

110087 15 x 7 RALLYE Lug 5-4.75, 4-1/4" back space
110088 15 x 7 RALLYE Lug 5-4.75, 3-3/4" back space
110089 15 x 8 RALLYE Lug 5-4.75, 4" back space

34 Series Camaro Style Rallye PC Silver

110090 14 x 6 RALLYE Lug 5-4.75, 4" back space
110091 14 x 7 RALLYE Lug 5-4.75, 4.25" back space



23 Series Supreme Chrome

110076 14 x 6 SUPREME Uni-Lug, 2-7/8" back space
110077 14 x 7 SUPREME Uni-Lug, 3-1/2" back space
110078 15 x 7 SUPREME Uni-Lug, 3-1/2" back space
110079 15 x 8 SUPREME Uni-Lug, 3-3/4" back space

Hubcaps, center caps and trim rings are not included with wheels.

Discover other custom and factory headlights on our website.

