



Installation

Kit P/N:

TA-5102P

Make:

Chevrolet

Model:

Cobalt SS

Year:

'05-'07

Engine:

L4-2.0L (sc)

Parts Identification:

- 1 Air filter (**Pro Dry S™** TF-9010D)
- 1 Intake tube, upper 05-T51021P1
- 1 Intake tube, lower 05-T5102P2
- 1 Coupling, elbow 05-00136
- 1 Coupling, straight 05-00417
- 2 Clamp #048
- 2 Clamp #044
- 1 Wavy washer M6
- 1 Flat washer M6
- 1 Nut M6
- 2 Screws M4
- 1 Rubber trim @ 13"L

Tools Required:

- 10mm socket or wrench
- Ratchet w/ extension
- Phillips screw driver
- Flat head screw driver
- 5/16" nut driver
- Pliers

Note: Read instructions before installation and have tools ready.

1



Shown with optional Takeda pre-filter

2



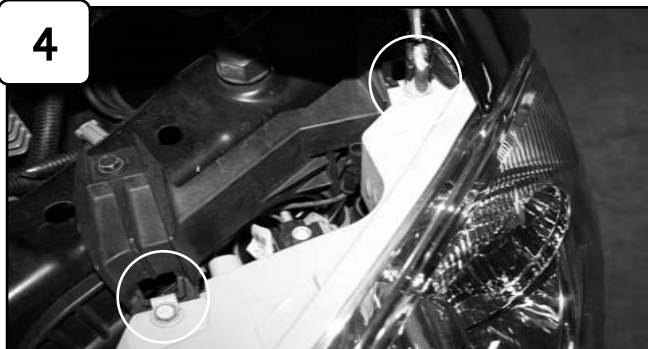
Complete Stock intake. *Please disconnect battery terminals before installation. Note: For additional information of air box removal, consult owners manual.*

3



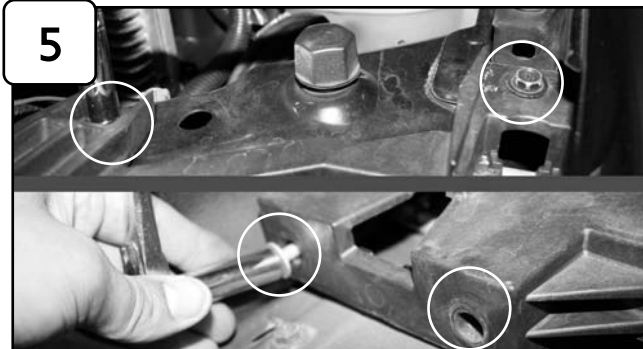
With pliers, pull back crank case line from intake. Loosen clamps using 5/16" nut driver and remove stock upper intake tube.

4



With 10mm socket, remove the 2 bolts holding in the headlight. Carefully pull back and remove headlight. Disconnect harness.

5



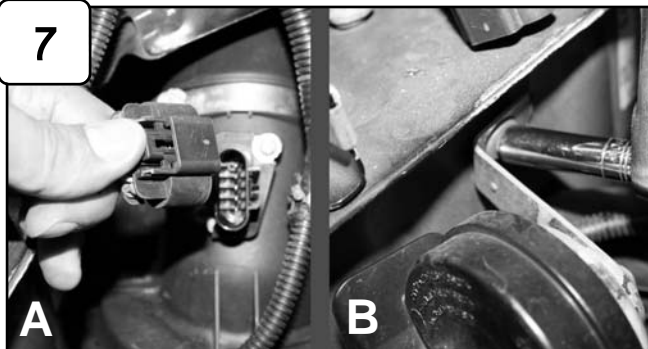
With 10mm socket or wrench, loosen the 4 bolts holding in headlight assembly bracket.

6



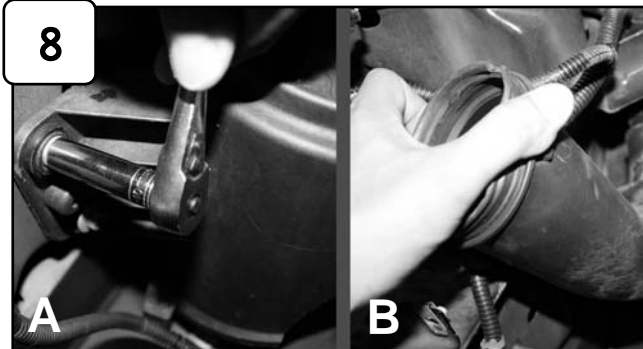
Carefully pull all harness away from bracket and remove.

7



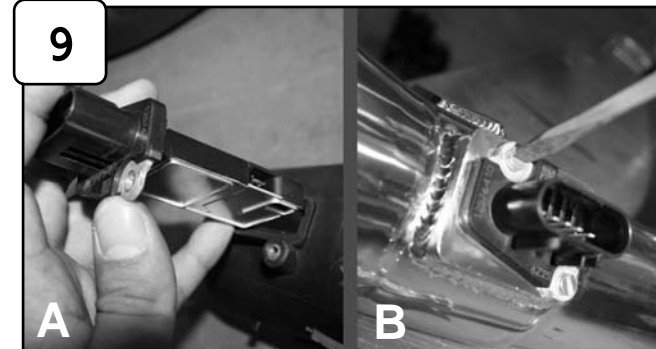
A) Disconnect MAF sensor harness. B) With 10mm socket or wrench, loosen the bolt holding horn bracket and set aside.

8



A) Loosen clamp holding in stock lower intake tube. With 10mm socket or wrench, loosen the 3 nuts holding in air box and remove. B) Remove stock lower intake tube.

9



A) Remove MAF sensor from stock air box. B) Install MAF sensor into new intake tube and secure using provided M4 screws.



Accessories



Replacement Filter P/N:
TF-9010D



Pre Filter P/N:
TP-7011B

Note: Filter Cleaning: When cleaning your **Pro Dry S™** filter, be sure to use only "Restore Kit" (Takeda P/N: TP-7016C **Pro Dry S™** cleaner only.)

Pro Dry S™ cleaning:
see cleaning instruction sheet TF-9000I.

10



Install provided rubber trim into hole cut out. *Note: This will prevent scratches for further installation.*

11



Attach elbow coupling and straight coupling to tube with clamps. Do not tighten.

12



Install upper intake tube assembly and position. Do not tighten.

13



Install lower intake tube assembly and position to coupling. Position bracket to factory mounting stud used for stock air box. Do not tighten.

14



Position coupling and tighten clamps using 5/16" nut driver. Attach crank case line to intake tube using pliers.

15



Tighten all remaining clamps using 5/16" nut driver.

16



With provided M6 nut, wavy and flat washer secure bracket on lower intake tube using 10mm wrench.

17



Reconnect MAF sensor harness. If optional pre-filter was purchased, attach pre-filter to air filter and install. Tighten clamp using 5/16" nut driver. Re-install horn. Re-install headlight assembly (reverse steps 5-8). Reconnect battery terminals.

18



The installation of your Takeda performance intake is now complete. Please check all components and re-tighten if necessary. Reconnect battery terminals. Thank you for choosing Takeda!