

54114

11-13 CHEVY
SILVERADO HD
2500HD/3500



54114

11-13 CHEVY
SILVERADO HD
2500HD/3500

CHEVY SILVERADO HD 2500HD/3500

Upper Class Mesh Grille - 2 Pc.

TOOLS REQUIRED:

Socket & Ratchet Set
Screwdriver Set
Jigsaw/Grinder/Cutting Wheel
Masking Tape
Drill and Bits

PARTS LIST

(20) 6/32" Nylon Lock Nuts
(1) 3" Custom L Bracket
(4) 4" Custom L Brackets
(1) 4 1/2" Custom Flat Bracket

(4) 5 1/2" Custom Flat Brackets

(5) #8 X 3/4" Screws

(5) #8 Nut Plates



Step 1 Factory Grille Removal

Remove the factory grille from the vehicle. There are 10 plastic pop clips on the radiator top cover, remove them (Fig 1) and remove the radiator cover. Now remove the four 10mm bolts from the top of the factory grille (Fig 2). Now reach down behind the factory grille and unlatch the plastic latches along the bottom of the back side of the factory grille and remove the grille from the vehicle.

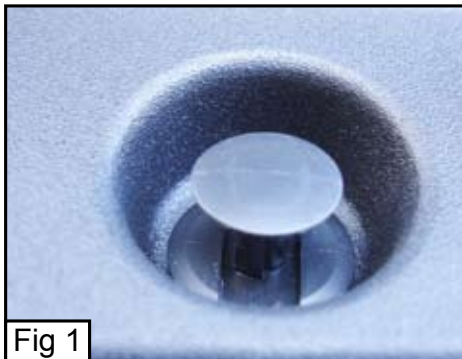


Fig 1



Fig 2

Step 2 Mesh Grille Installation ***OVERLAY METHOD***

This section will guide you through installing the mesh grille as an overlay. This method requires much less work than the insert method. If you would like to install the mesh grille as an insert skip to the next section "Mesh Grille Installation ***Insert Method***".

With the factory grille removed from the vehicle use masking tape over the chrome sections on the factory grille to prevent scratches. Insert the mesh grilles into the appropriate openings from the front of the factory grille shell. Turn the grille over and from the backside locate the threaded studs that are welded onto the back of the mesh grilles. The five flat brackets will install onto the lower mesh grille. Place the brackets onto the threaded studs so the studs go through the holes in the brackets. The brackets will go over two studs each, an upper and lower stud. Install ten 6/32" nylon lock nuts onto the threaded studs to secure the brackets and tighten (Fig 3). The shortest flat bracket will install onto the center upper and lower stud. Now install the five L brackets onto the studs on the upper mesh grille. The bent ends will be on the bottom side and latch around the lip of the factory grille. The shortest L bracket will go onto the center set of studs. Install the 6/32" nylon lock nuts onto the threaded studs (Fig 4).



Fig 3



Fig 4

54114

**SILVERADO HD
2500HD/3500**

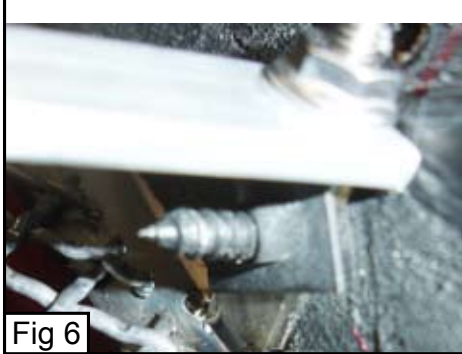
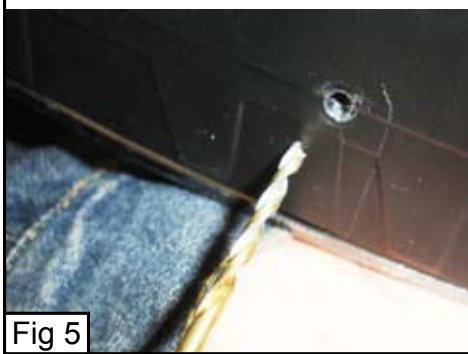


54114

**SILVERADO HD
2500HD/3500**

Step 2 Mesh Grille Installation *OVERLAY METHOD*** Continued**

The threaded studs on the top side of the upper mesh grille have a small tab they are attached to. You will need to drill holes (1/8") through the plastic top plate on the factory grille where these tabs are located (Fig 5). The center of the tabs have a hole in them. Next take the five 3/4" screws and insert them through the holes you drilled in the plastic and the tabs with the holes and install the five nut plates onto the screws and tighten (Fig 6). Reinstall the completed grille onto the vehicle. Installation complete.



Step 2 Mesh Grille Installation *INSERT METHOD*****

To install the mesh grilles as an insert you will need to cut out the cross hatch pattern from the two openings in the factory grille. Use a jigsaw to cut the cross hatch close to the frame of the factory grille and use a grinding wheel to smooth out the cuts (Fig 7). The rest of the installation will be the same as the overlay method except you do not have to use the 3/4" screws and nut plates.

