

INSTALLATION INSTRUCTIONS

GRILLE GUARD

05-08 NISSAN X-TERRA

PART

PARTS LIST:

1	Grille Guard	4	12-1.25mm x 40mm Hex Head Bolts (fine thread)
1	Driver/Left Mounting Bracket	6	12-1.75mm x 35mm Hex Head Bolts
1	Passenger/Right Mounting Bracket	6	12mm Nylock Nuts
1	Driver/Left Top Bracket	16	12mm ID x 29mm OD x 3mm Flat Washers
1	Passenger/Right Top Bracket	4	6-1.00mm x 30mm Button Head Bolts
		4	6mm ID x 18mm OD x 1.5mm Flat Washers



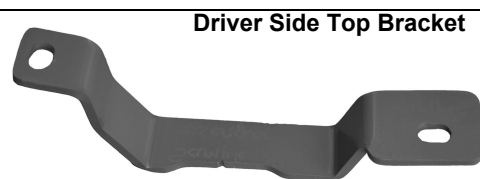
**Passenger Side
Mounting Bracket**



**Driver Side Mounting
Bracket**



Passenger Side Top Bracket



Driver Side Top Bracket

PROCEDURE:

1. REMOVE CONTENTS FROM BOX. VERIFY ALL PARTS ARE PRESENT. READ INSTRUCTIONS CAREFULLY BEFORE STARTING INSTALLATION.
2. From underside of vehicle, remove the factory tow hook located on the passenger side. **NOTE:** You will not be re-installing tow hook.
3. Locate the driver side Mounting Bracket and partially hang it from factory threaded holes in the frame rail using the included (2) 12-1.25 x 40mm Hex Head Bolts (fine thread), and (2) 12mm Flat Washers (**Figure 1**). Repeat this step for passenger side.
4. Open the hood and remove the four plastic fasteners across the top of the grille shell (**Figure 2**).
5. Locate driver side Top Bracket. Slightly pull on the factory grille shell as you insert the Top Bracket through upper corner in the grille shell panel (**Figure 4**). Orient Top Bracket to factory threaded hole in the radiator support and attach it to vehicle using the included (1) 6mm x 30mm Button Head Bolt and (1) 6mm Flat Washer (**Figure 5 & 6**). Do not tighten at this time.
6. With help position Grille Guard on the inner side of Mounting Brackets. Use the included (6) 12mm x 35mm Hex Head Bolts, (6) 12mm Nylock Nuts, and (12) 12mm Flat Washers to attach the Grille Guard to Mounting Brackets (**Figure 7**). Do not tighten at this time.
7. Attach Grille Guard to Top Brackets using the included (2) 6mm x 30mm Button Head Bolts and (2) 6mm Flat Washers (**Figure 8**).
8. Level and adjust Grille Guard properly; and then tighten all hardware at this time.
9. Re-install the upper section of the factory grille shell using the fasteners removed in step four.
10. Do periodic inspections to the installation to make sure that all hardware is secure and tight.

To protect your investment, wax this product after installing. Regular waxing is recommended to add a protective layer over the finish. Do not use any type of polish or wax that may contain abrasives that could damage the finish.

For stainless steel: Aluminum polish may be used to polish small scratches and scuffs on the finish. Mild soap may be used also to clean the Grille Guard.

For gloss black finishes: Mild soap may be used to clean the Grille Guard.

(Driver Side Installation Shown)

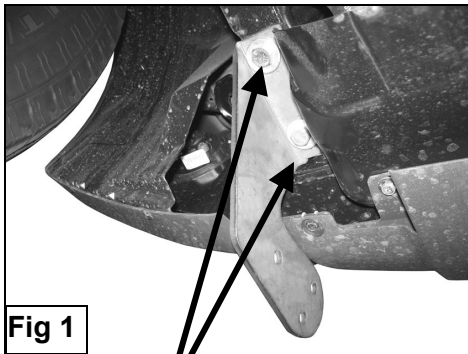


Fig 1

12-1.25mm x 40mm Hex Head Bolts (fine thread)
12mm Flat Washers

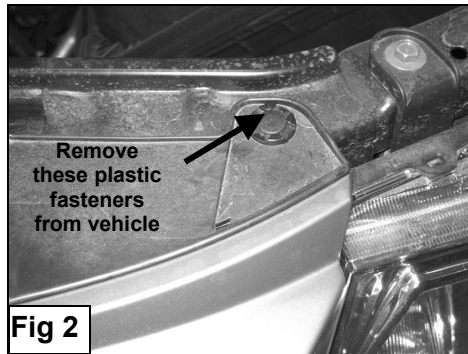


Fig 2

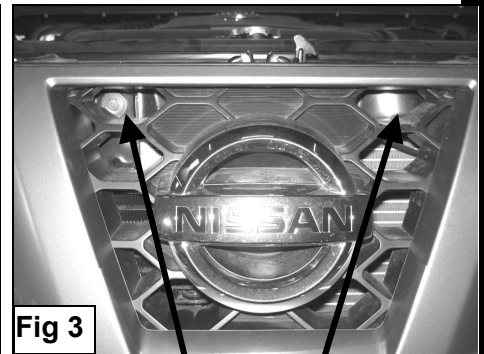


Fig 3

Insert Top Bracket through here



Fig 4

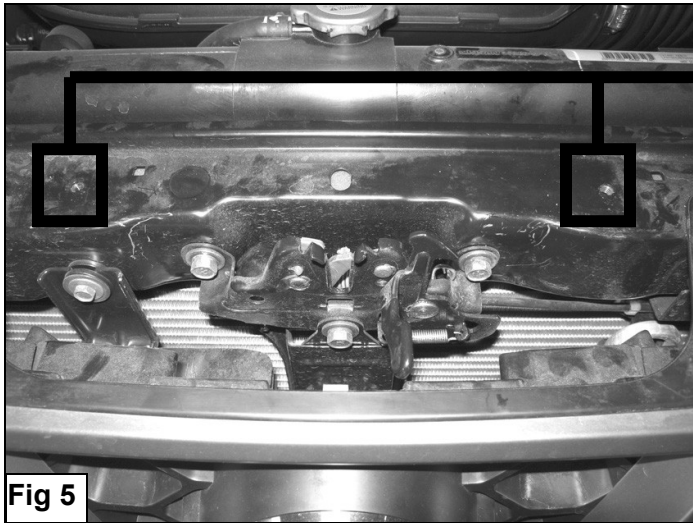
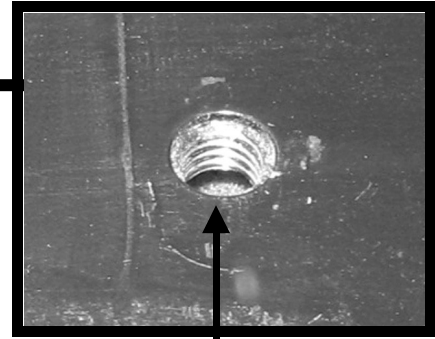


Fig 5



**Top Bracket
Mounting Location**

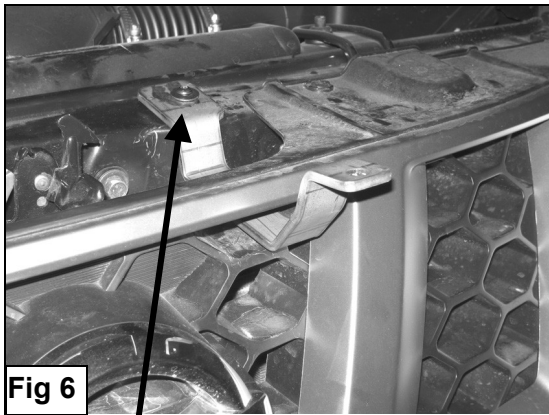


Fig 7

**6mm x 30mm Button Head Bolt
6mm Flat Washer**

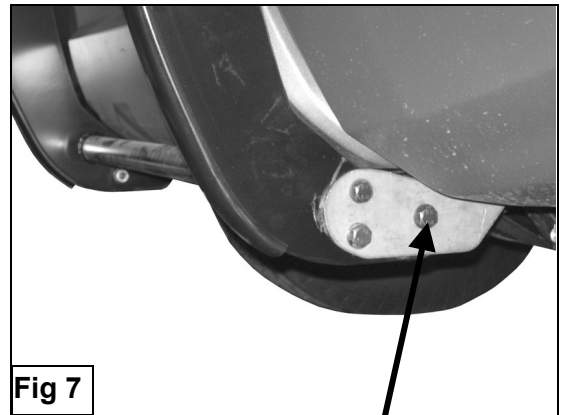


Fig 8

**12mm x 35mm Hex Head Bolts
12mm Nylock Nuts
12mm Flat Washers**

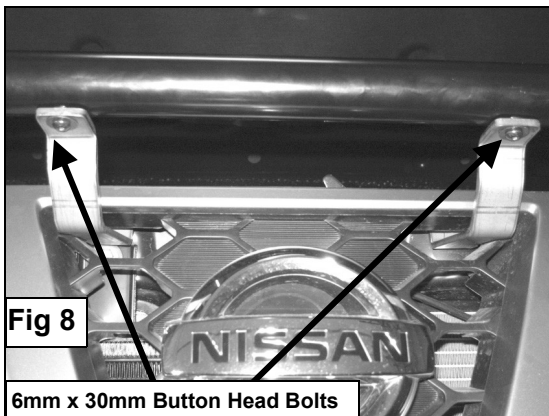


Fig 9

**6mm x 30mm Button Head Bolts
6mm Flat Washers**



Fig 10