



# SPYDER

## INSTALLATION GUIDE: ALT-YD-SFRS12-LBLEED-(ALL COLORS)

### Tools Required

8mm Socket & Ratchet  
Panel Popper

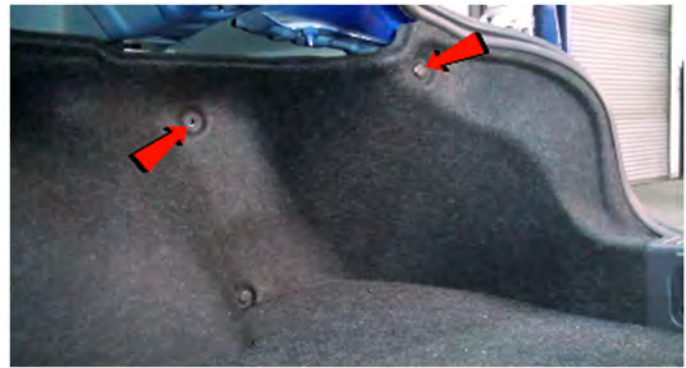


*\*Please Note\**

If you are unfamiliar with the installation processes,  
professional installation is highly recommended.



1) Open the hood.



2) Remove [2x] plastic retainers securing the trunk liner. Then peel back the trunk liner for access.



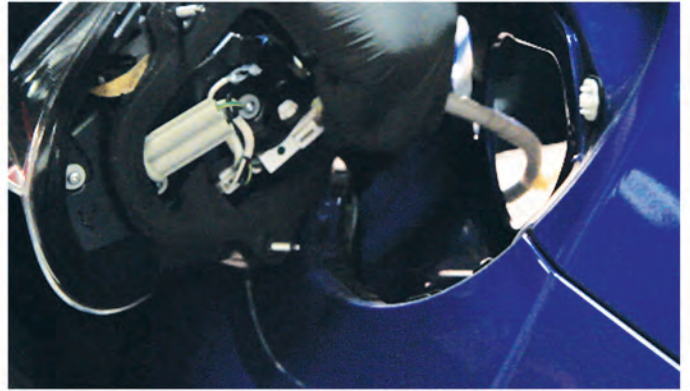
3) Remove [4x] 8mm bolts securing the tail light.



4) Remove the tail light wiring harness retainer from the stud.



5) Unseat the tail light.



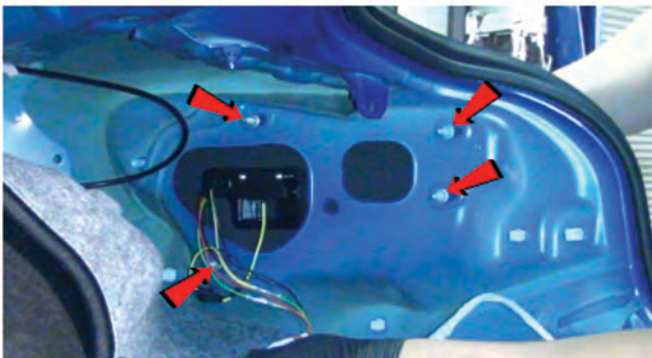
6) Disconnect the tail light wiring harness.



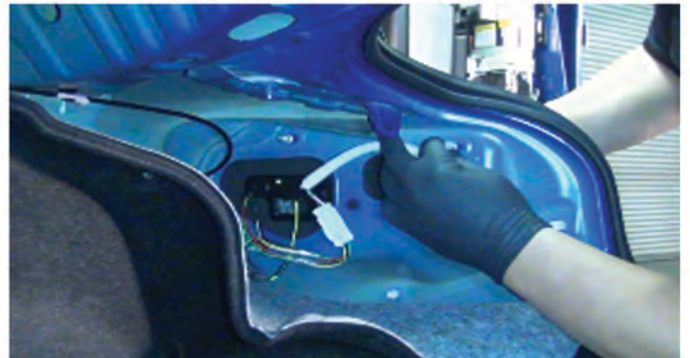
7) Connect the Spyder tail light to the wiring harness.



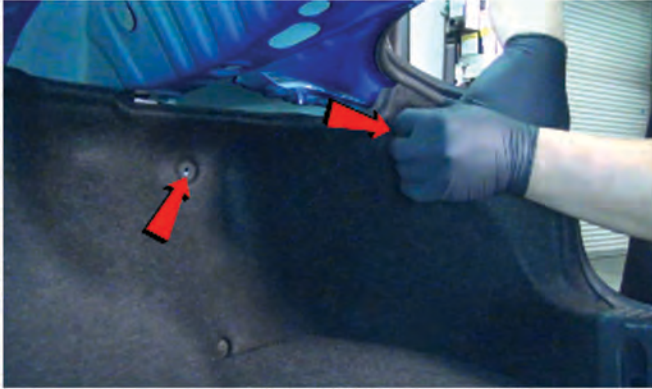
8) Seat the Spyder tail light, taking care not to pinch the harness between the tail light and body.



9) Reinstall [4x] 8mm nuts to secure the tail light.



10) Reinstall the tail light wiring harness retainer.



11) Reinstall [2x] plastic retainers to secure the trunk liner.



12) Close the trunk and enjoy your new Spyder LED tail lights.