

SPEC-D *Turning*

2001-2005 MAZDA MX-5 **PROJECTOR HEADLIGHTS** INSTALLATION INSTRUCTIONS

If you experience any difficulties that the instruction did not cover, Please seek assistance at a local automotive shop

Please wear protection before you work on any vehicle.



An assistant is useful when removing the front bumper from your vehicle.

Please be cautious when working with the bumper or any parts belonging to the vehicle's body to prevent scratching.

Do not make direct contact with the halogen bulbs or the wire assembly until the unit has cooled down after use.

TOOLS AND SUPPLIES REQUIRED

1/2" Drive Ratchet

10mm Socket

Phillips Screwdriver

Trim Pad Remover

If your Headlight is Halo type, you also need:

Wire Stripper

Wire Cramer

4 Blue Quick Splice Wire Connectors

4 Blue Male Quick Wire Connectors

4 Blue Female Quick Wire Connectors

2 Red Wires (8 inch)

2 Black Wires (8 inch)

Product Part Numbers:

LHP-MX501JM-TM

LHP-MX501-TM



2001-2005 MAZDA MX-5 PROJECTOR HEADLIGHTS INSTALLATION INSTRUCTIONS

If you experience any difficulties that the instruction did not cover, Please seek assistance at a local automotive shop

Please wear protection before you work on any vehicle.



An assistant is useful when removing the front bumper from your vehicle.

Please be cautious when working with the bumper or any parts belonging to the vehicle's body to prevent scratching.

Do not make direct contact with the halogen bulbs or the wire assembly until the unit has cooled down after use.



1. Clips and bolts locations



2. Plastic clips location



3. Remove the clips that may be in these locations



4. Remove the clips that may be in these locations



5. Remove the phillips head screw



6. Unplug the bumper light



7. Disconnect the fog light



8. (4) 10mm bolts location



9. Remove the (4) 10mm bolts



10. Tug on the side of the front bumper to unclip



11. Remove front bumper



12. Remove (2) 10mm bolts



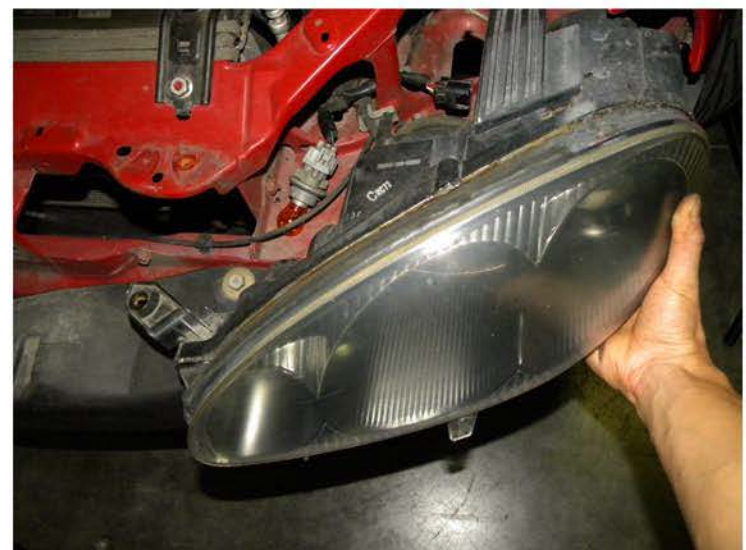
13. Remove light bulb and harness



14. Unplug headlight harness



15. Unplug headlight harness



16. Remove the hadlight



17. Plug in new headlight to headlight harness



18. Connect New headlight to harness

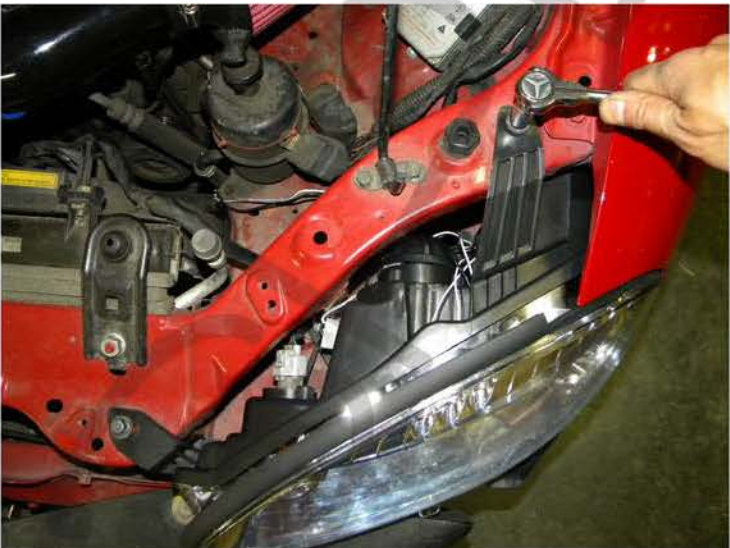
Please see the Halo and L.E.D installation instruction
If your headlights don't have HALO or L.E.D. You can skip it



19. Connect driving light bulb



20. Place New projector headlight



21. Tighten (2) 10mm bolts



22. Replace front bumper



23. Tighten (4) 10mm bolts



24. Reconnect bumper light



25. Reconnect fog light



26. Tighten phillips head screw



27. Replace clips that may be in these locations
Please repeat the step in order from 1 to 27 for the opposite side



28. The installation is now complete