

SPEC-D *Turning*

2003-2007 INFINITI G35 COUPE **PROJECTOR HEADLIGHTS** INSTALLATION INSTRUCTIONS

If you experience any difficulties that the instruction did not cover, Please seek assistance at a local automotive shop

Please wear protection before you work on any vehicle.



An assistant is useful when removing the front bumper from your vehicle.

Please be cautious when working with the bumper or any parts belonging to the vehicle's body to prevent scratching.

Do not make direct contact with the halogen bulbs or the wire assembly until the unit has cooled down after use.

TOOLS AND SUPPLIES REQUIRED

1/2" Drive Ratchet

10mm Socket

6" Extension

Trim Pad Remover

If your Headlight is Halo type, you also need:

Wire Stripper

Wire Crimper

4 Blue Quick Splice Wire Connectors

4 Blue Male Quick Wire Connectors

4 Blue Female Quick Wire Connectors

2 Red Wires (8 inch)

2 Black Wires (8 inch)

Product Part Numbers:

LHP-G35032-TM

LHP-G35032JM-TM

LHP-G35032G-TM



2003-2007 INFINITI G35 COUPE PROJECTOR HEADLIGHTS INSTALLATION INSTRUCTIONS

If you experience any difficulties that the instruction did not cover, Please seek assistance at a local automotive shop

Please wear protection before you work on any vehicle.



An assistant is useful when removing the front bumper from your vehicle.

Please be cautious when working with the bumper or any parts belonging to the vehicle's body to prevent scratching.

Do not make direct contact with the halogen bulbs or the wire assembly until the unit has cooled down after use.



1. (10) 10mm bolts location



2. Remove the (10) 10mm bolts



3. (3) plastic clips location



4. Remove the (3) plastic clips



5. Disconnect the bumper light socket



6. (2) 10mm screws location



7. Remove the (2) 10mm screws



8. (6) plastic clips location



9. Remove the (6) plastic clips



10. Pull the sides of the front bumper down and then outward



11. Remove the front bumper



12. Remove the energy absorber



13. Remove the 10mm bolt



14. Remove the 10mm bolt



15. (2) 10mm bolts location



16. Remove the (2) 10mm bolts



17. Remove the headlight



18. Disconnect the headlight harness



19. Disconnect the headlight harness from the ballast



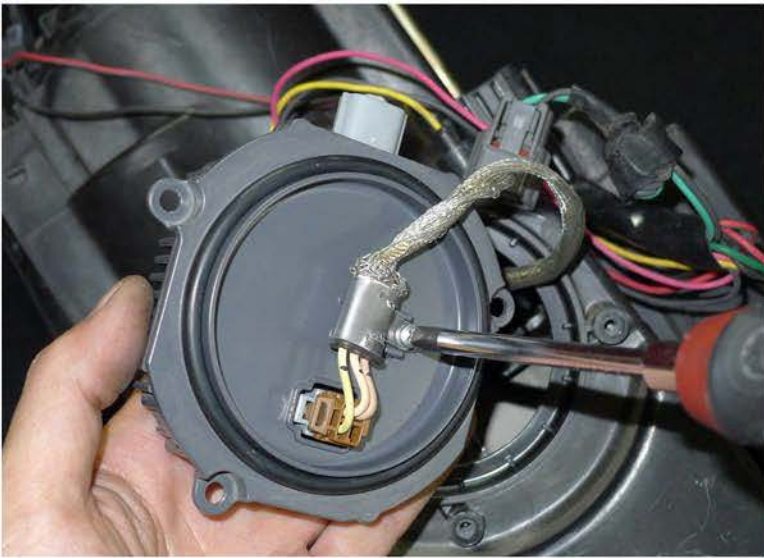
20. Remove the (3) phillips head screws



21. Remove the ballast from the stock headlight



22. Back of the ballast



23. Remove the phillips head screw



24. Disconnect the harness from the ballast



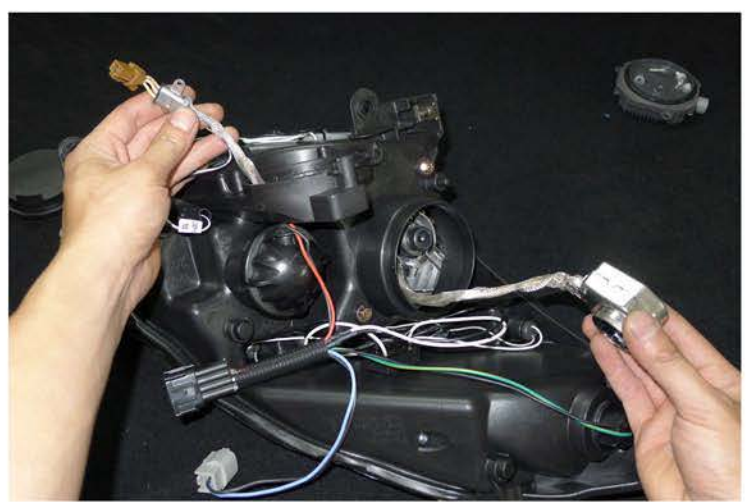
25. Remove the HID bulb to access the hole cover



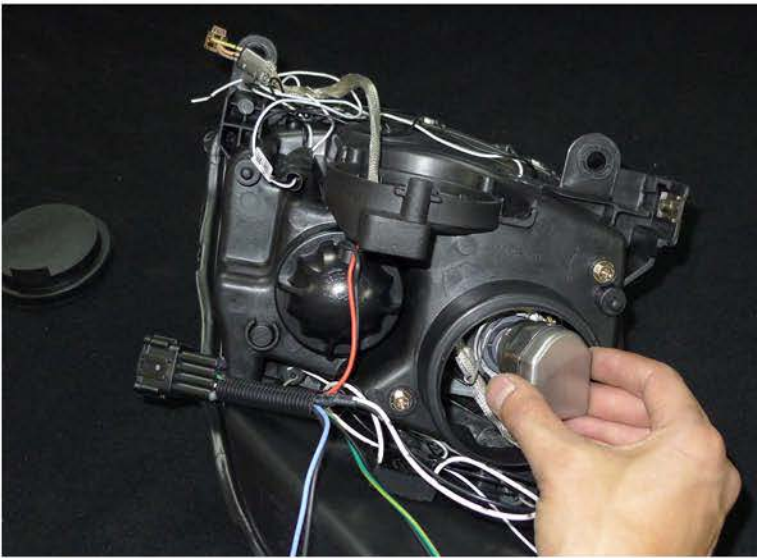
26. Disconnect the HID light socket and remove the socket harness



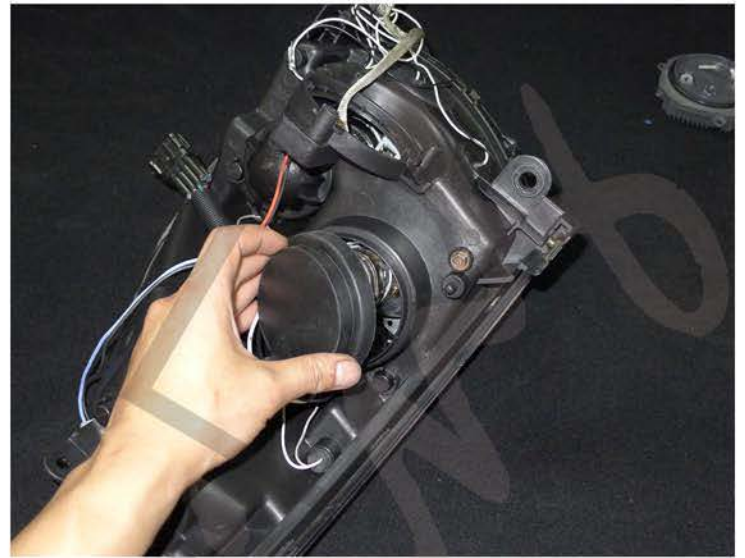
27. Remove the HID bulb from the stock headlight and place in the new headlight



28. Run the HID socket harness though the new headlight housing



29. Attach the HID socket to the HID bulb.



30. Replace the access hole cover



31. Connect the HID socket harness to the ballast



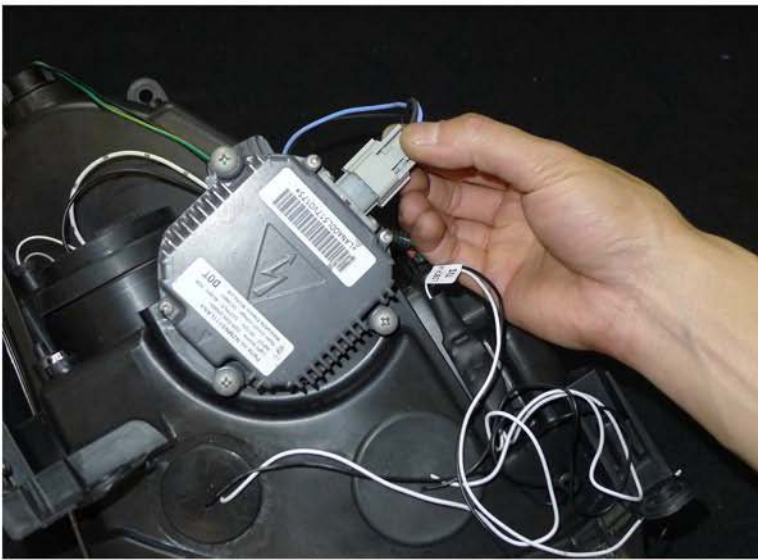
32. Tighten the phillps head screw



33. Press the ballast firmly to ensure that the o-ring



34. Tighten the (3) phillps head screws



35. Connect the hadlight harness to the ballast

Please see the "Halo and L.E.D installation instructions"
If your headlights don't have HALO or L.E.D. You can skip this step



36. Connect the headlight harness to the new headlight



37. Place the new headlight in the stock location



38. Tighten the 10mm bolt



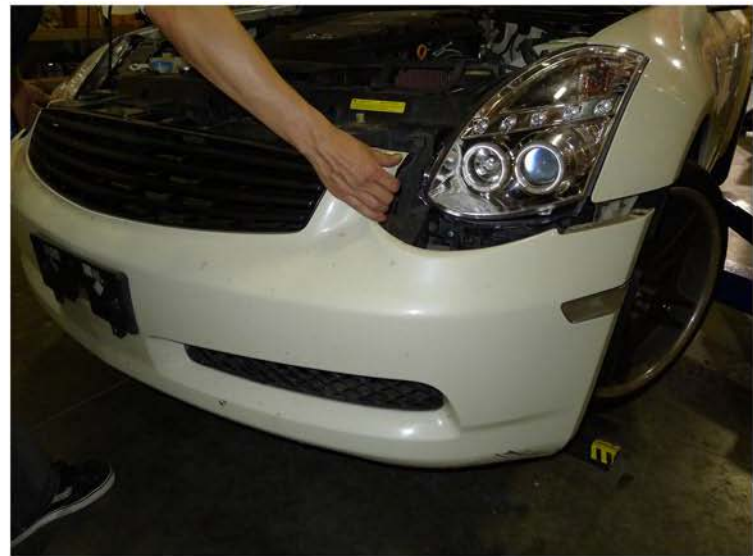
39. Tighten the 10mm bolt



40. Tighten the (2) 10mm bolts



41. Replace the energy absorber



42. Replace the front bumper



43. Replace the (6) plastic clips



44. Tighten the (2) 10mm screws



45. Replace the bumper light socket



46. Tighten the (2) 10mm bolts



47. Tighten the (10) 10mm bolts



42. The installation is now complete

