

SPEC-D *Turning*

1999-2004 FORD F250 PROJECTOR / LED **HEADLIGHTS** INSTALLATION INSTRUCTIONS

If you experience any difficulties that the instruction did not cover, Please seek assistance at a local automotive shop

Please wear protection before you work on any vehicle.

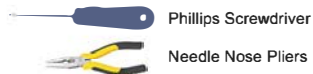


An assistant is useful when removing the front bumper from your vehicle.

Please be cautious when working with the bumper or any parts belonging to the vehicle's body to prevent scratching.

Do not make direct contact with the halogen bulbs or the wire assembly until the unit has cooled down after use.

TOOLS AND SUPPLIES REQUIRED



Phillips Screwdriver

Needle Nose Pliers

If your Headlight is Halo type, you also need:



Wire Stripper

Wire Crimper

4 Blue Quick Splice Wire Connectors

4 Blue Male Quick Wire Connectors



4 Blue Female Quick Wire Connectors

2 Red Wires (8 inch)

2 Black Wires (8 inch)

Product Part Numbers:

LH-F25099JM-RS

LH-F25099-RS

LHP-F25099JM-RS

LHP-F25099-RS

2LC-F25099JM-RS

2LC-F25099-RS



FORD F250 PROJECTOR / LED HEADLIGHTS INSTALLATION INSTRUCTIONS

If you experience any difficulties that the instruction did not cover, Please seek assistance at a local automotive shop

Please wear protection before you work on any vehicle.



An assistant is useful when removing the front bumper from your vehicle.

Please be cautions when working with the bumper or any parts belonging to the vehicles's body to prevent scratching.

Do not make direct contact with the halogen bulbs or the wire assembly until the unit has cooled down after use.



1. Before



2. Phillips head screw location



3. Remove the (2) phillips head screws



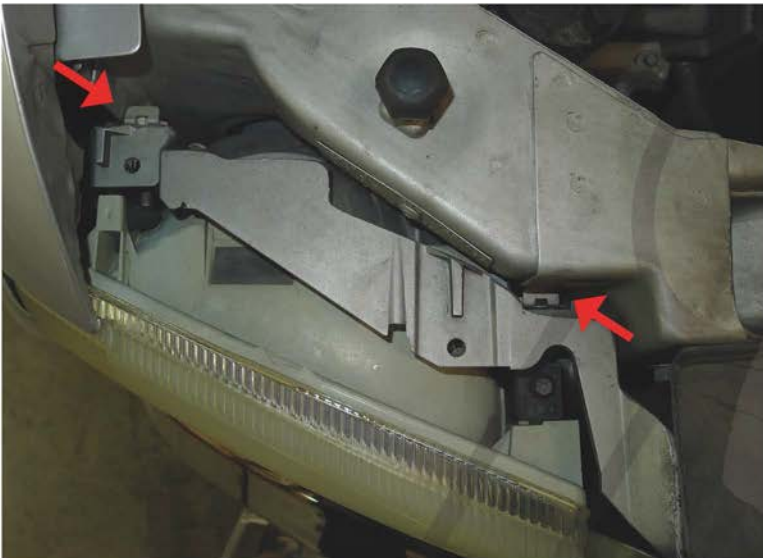
4. Remove the bumper corner light



5. Remove the light socket



6. Remove the light socket



8. (2) metal retaining clip location



9. Remove the (2) metal clips



10. Remove the headlight



10. Remove the headlight bulb and harness



11. Install the headlight bulb and connect the headlight harness to the new headlight

Please see the "HALO and L. E. D. head lights installation instructions"
If your head lights don't have HALO and L.E.D. You can skip the installation instruction.



12. Place the new headlight in the stock location



13. Install the light sockets



14. Install the light socket into the bumper corner light



15. Place the bumper corner light into the stock loaction



16. Tighten the (2) phillips screws



17. The installation is now complete

Please repeat the steps from 1 to 16 for the opposite side