

SPEC-D *Turning*

2004-2006 NISSAN TITAN **PROJECTOR HEADLIGHTS** INSTALLATION INSTRUCTIONS

If you experience any difficulties that the instruction did not cover, Please seek assistance at a local automotive shop

Please wear protection before you work on any vehicle.



An assistant is useful when removing the front bumper from your vehicle.

Please be cautious when working with the bumper or any parts belonging to the vehicle's body to prevent scratching.

Do not make direct contact with the halogen bulbs or the wire assembly until the unit has cooled down after use.

TOOLS AND SUPPLIES REQUIRED

3/8" Drive Ratchet

Needle Nose Pliers

6" Extension

Handy Remover

10mm Socket

Phillips Screwdriver

If your Headlight is Halo type, you also need:

Wire Stripper

4 Blue Female Quick Wire Connectors

Wire Crimper

2 Red Wires (8 inch)

4 Blue Quick Splice Wire Connectors

2 Black Wires (8 inch)

4 Blue Male Quick Wire Connectors

Product Part Numbers:

2LHP-TIT04G-TM

2LHP-TIT04-TM

2LHP-TIT04JM-TM



2004-2006 NISSAN TITAN PROJECTOR HEADLIGHTS INSTALLATION INSTRUCTIONS

If you experience any difficulties that the instruction did not cover, Please seek assistance at a local automotive shop

Please wear protection before you work on any vehicle.



An assistant is useful when removing the front bumper from your vehicle.

Please be cautious when working with the bumper or any parts belonging to the vehicle's body to prevent scratching.

Do not make direct contact with the halogen bulbs or the wire assembly until the unit has cooled down after use.



1. Grill retaining clips location



2. Release the plastic clips holding grill onto the radiator support



3. Release the plastic clips holding grill onto the radiator support



4. Release the plastic clips holding grill onto the radiator support



5. Release the plastic clips holding grill



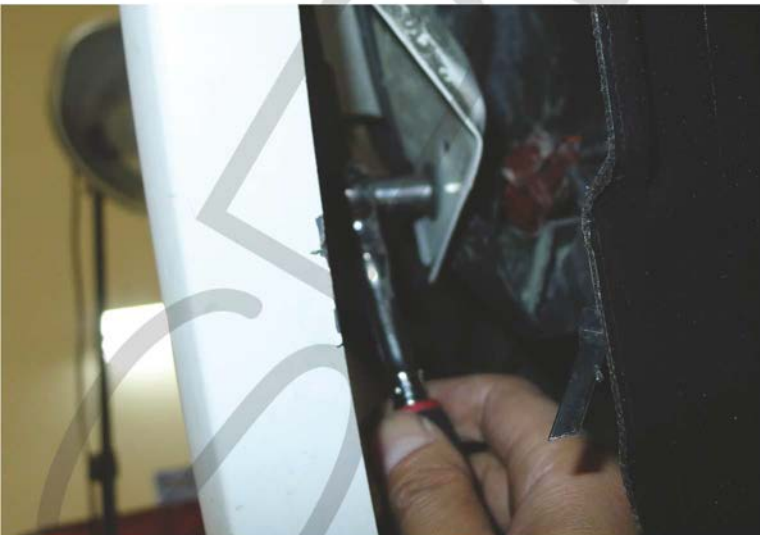
6. Remove the factory grill



7. Remove the 8mm bolt



8. Remove the 8mm bolt



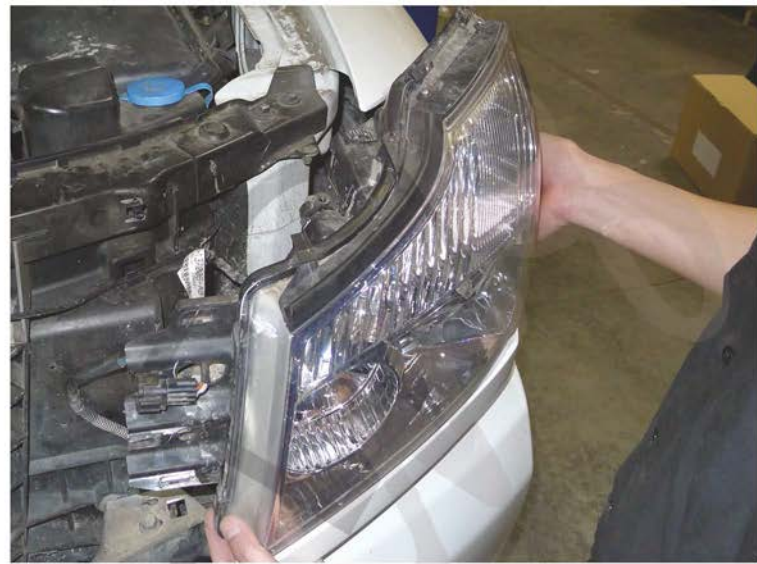
9. Remove the 8mm bolt



10. Remove the 8mm bolt



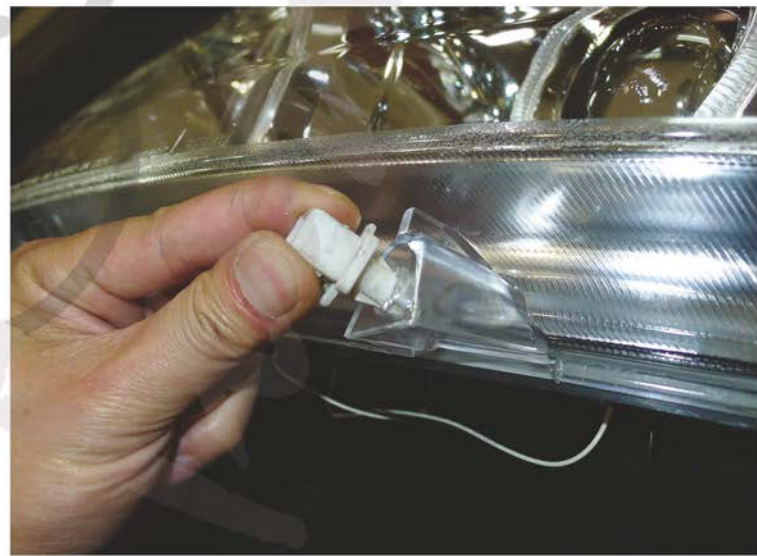
11. Disconnect the headlight harness



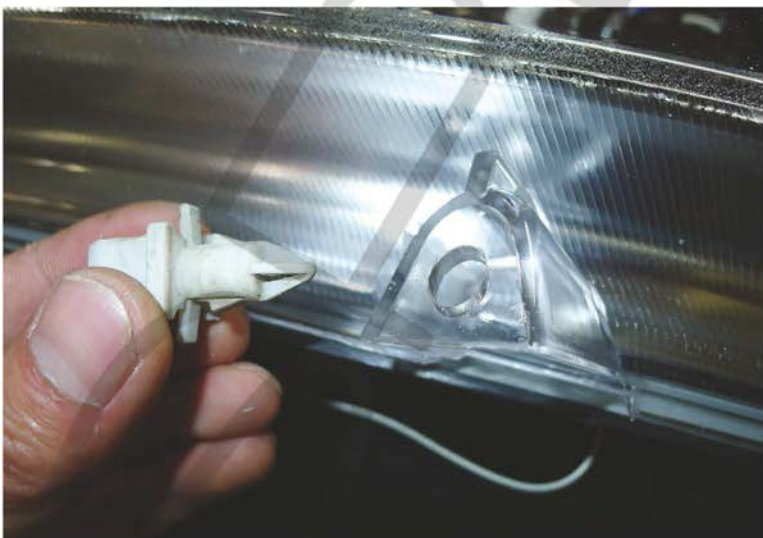
12. Remove the factory headlight



13. Remove the headlight trim



14. Remove the plastic clips from the headlight



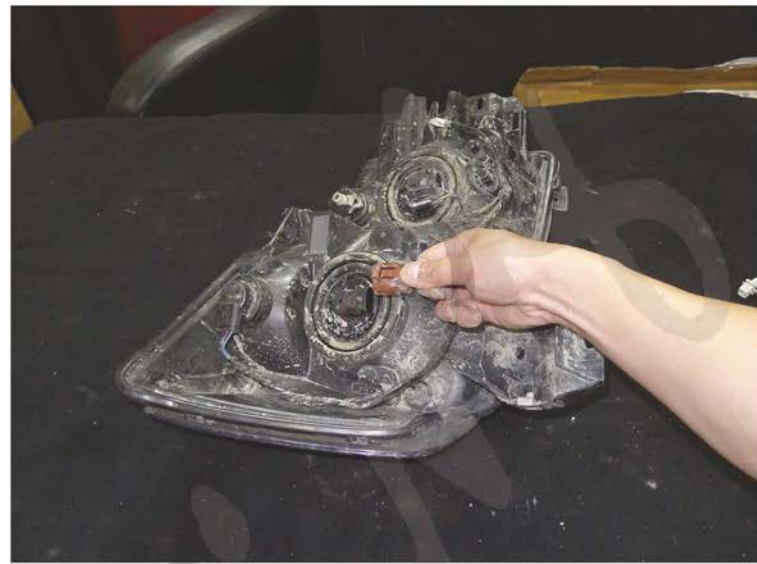
15. Remove the (2) plastic clips from headlight



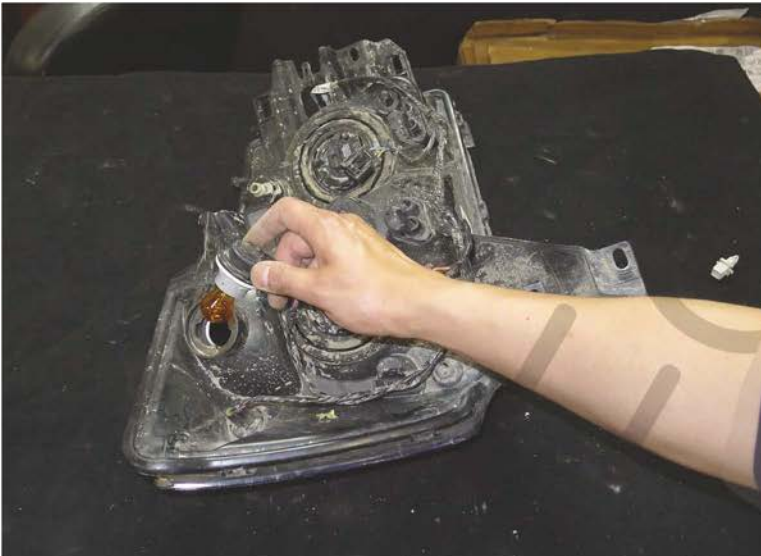
16. Remove the headlight sub-harness



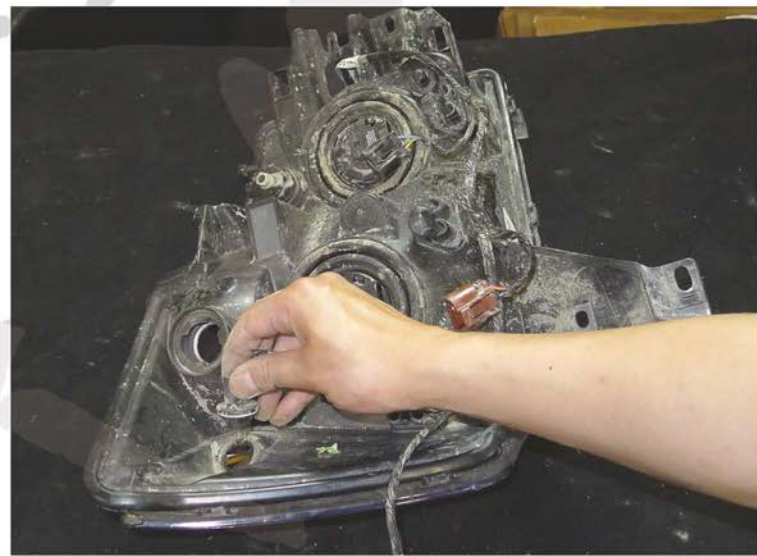
17. Remove the headlight sub-harness



18. Remove the headlight sub-harness



19. Remove the light socket



20. Remove the light socket



21. Install the light socket into the new projector headlight

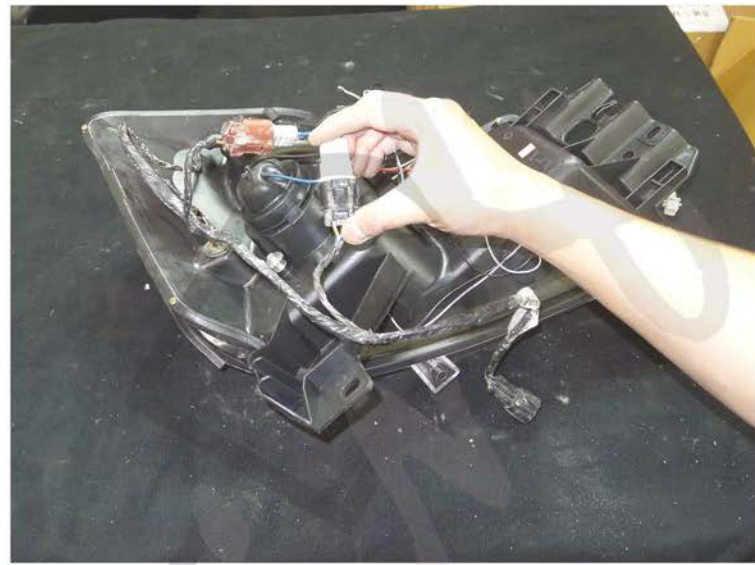


22. Install the socket in the new projector headlight



23. Connect the headlight sub-harness to the new projector headlight

Please see the "Halo and L.E.D installation instructions"
If your headlights don't have HALO or L.E.D. you can skip it



24. Connect the headlight sub-harness to the new projector headlight



25. Connect the headlight sub-harness to the new projector headlight



26. Install the (2) plastic clips on the new projector headlight



27. Install the headlight trim on the new projector headlight



28. Place the new projector headlight in the stock location



29. Tighten the 8mm bolt



30. Tighten the 8mm bolt



31. Tighten the 8mm bolt



32. Tighten the 8mm bolt



33. Remove the (4) plastic clips from the radiator support



40. Install the plastic clips on the grill



35. Install the plastic clips on the grill



36. Install the front grill



37. Please repeat the steps from 1 to 36 for the opposite side
The installation is now complete