

SPEC-D *Turning*

2008-2012 MITSUBISHI LANCER EVO **LED PROJECTOR HEADLIGHTS** INSTALLATION INSTRUCTIONS

If you experience any difficulties that the instruction did not cover, Please seek assistance at a local automotive shop

Please wear protection before you work on any vehicle.



An assistant is useful when removing the front bumper from your vehicle.

Please be cautious when working with the bumper or any parts belonging to the vehicle's body to prevent scratching.

Do not make direct contact with the halogen bulbs or the wire assembly until the unit has cooled down after use.

TOOLS AND SUPPLIES REQUIRED

¼" Drive Ratchet Trim Pad Remover
6" Extension
10mm Socket
Phillips Screwdriver

If your Headlight is Halo type, you also need:

Wire Stripper 4 Blue Female Quick Wire Connectors
Wire Crimper 2 Red Wires (8 inch)
4 Blue Quick Splice Wire Connectors 2 Black Wires (8 inch)
4 Blue Male Quick Wire Connectors

Product Part Numbers:

2LHP-EVO08-8-TM

2LHP-EVO08JM-8-TM

2LHP-EVO08G-8-TM



MITSUBISHI LANCER EVO LED PROJECTOR HEADLIGHTS INSTALLATION INSTRUCTIONS

If you experience any difficulties that the instruction did not cover, Please seek assistance at a local automotive shop

Please wear protection before you work on any vehicle.



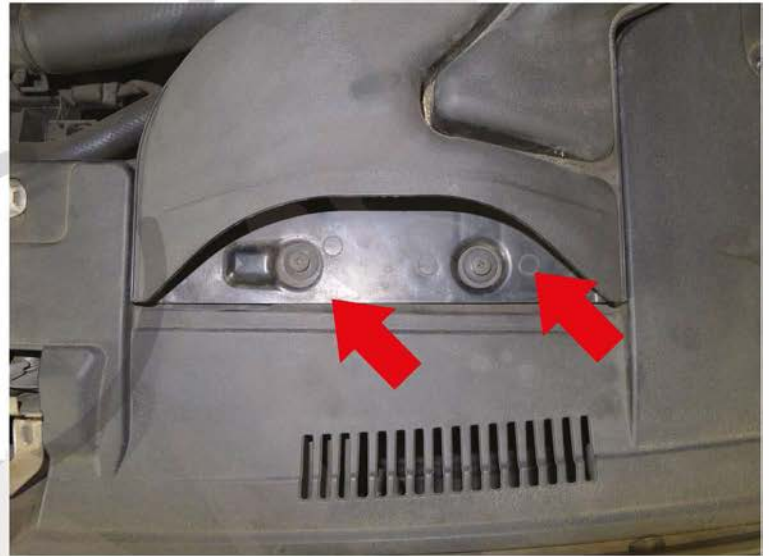
An assistant is useful when removing the front bumper from your vehicle.

Please be cautions when working with the bumper or any parts belonging to the vehicles's body to prevent scratching.

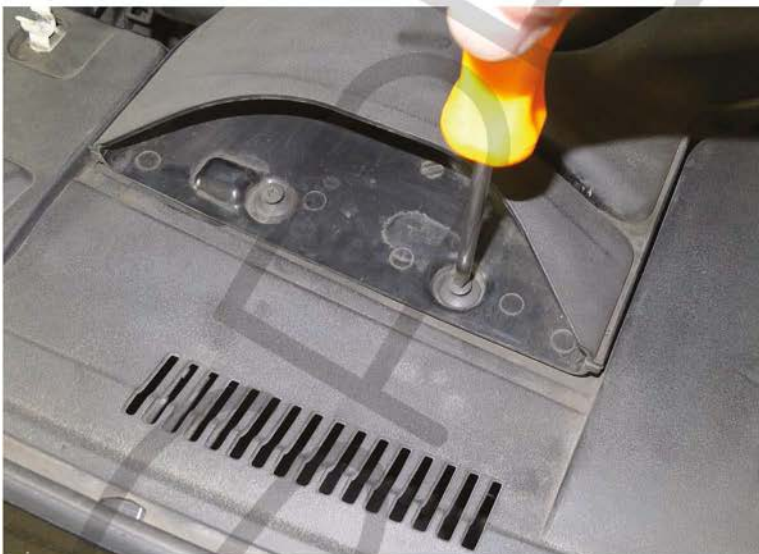
Do not make direct contact with the halogen bulbs or the wire assembly until the unit has cooled down after use.



1. Before



2. (2) plastic clips location



3. Remove the (2) plastic clips



4. Remove the (2) plastic clips



5. Remove the (4) plastic clips



6. Remove the plastic moulding



7. (6) plastic clips and the (5) 10mm bolts location



8. Remove the (6) plastic clips



9. Remove the (6) plastic clips



10. Remove the (5) 10mm bolts



11. Remove the (5) 10mm bolts



12. Remove the phillips head screw



13. (2) plastic clips location



14. Remove the (2) plastic clips



15. Remove the (2) plastic clips



16. (5) 10mm bolts location



17. Remove the (5) 10mm bolts



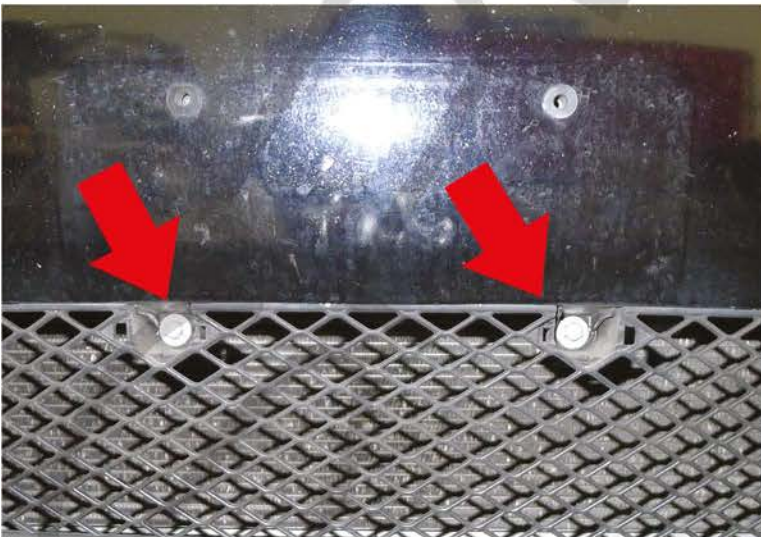
18. Remove the 10mm bolt



19. Plastic cover location



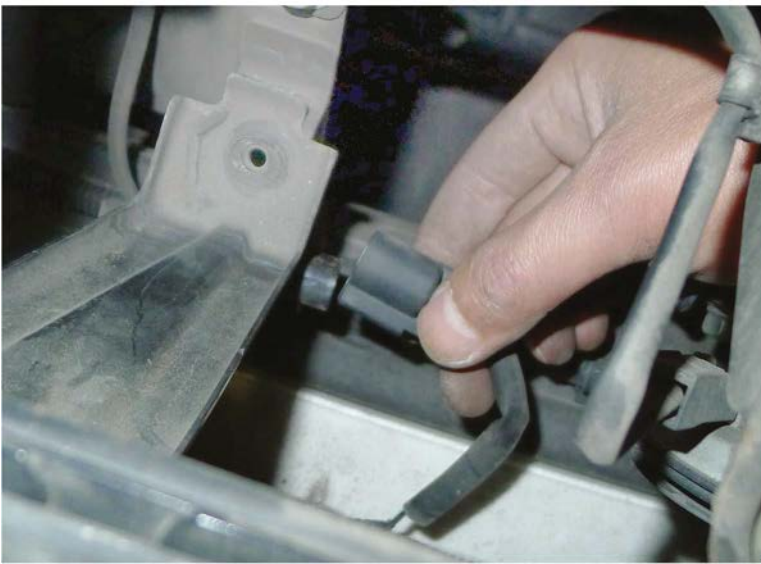
20. Remove the (2) plastic cover



21. (2) 10mm bolts location



22. Remove the (2) 10mm bolts



23. Disconnect the fog light harness



24. Remove the front bumper



25. The 10mm bolt location



26. Remove the 10mm bolt



27. (3) 10mm bolts



28. Remove the (3) 10mm bolts



29. Remove the (3) 10mm bolts



30. Remove the (3) 10mm bolts



31. Disconnect the headlight and remove the headlight harness



32. Place the projector headlight in the stock location



33. Connect the headlight harness to the projector headlight
Please see the "L. E. D. head lights installation instructions"



34. Tighten the (3) 10mm bolts



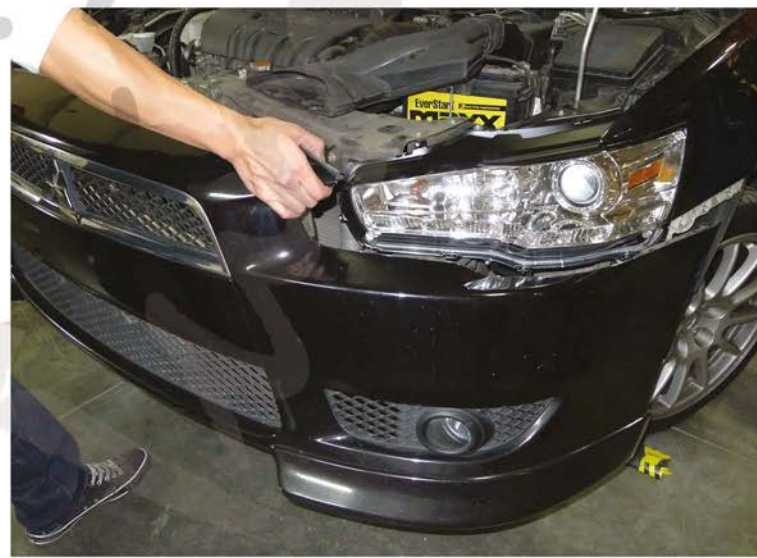
35. Tighten the (3) 10mm bolts



36. Tighten the (3) 10mm bolts



37. Tighten the 10mm bolt



38. Replace the front bumper



39. Connect the fog light harness



40. Tighten the (5) 10mm bolt



41. Tighten the (5) 10mm bolts



43. Tighten the (2) 10mm bolts



44. Tighten the phillips head screw



45. Replace the (2) plastic clips



46. Replace the (5) 10mm bolts



47. Replace the (6) plastic clips



48. Replace the plastic moulding



49. Replace the (4) plastic clips



50. Replace the (2) plastic clips
Please repeat the steps from 1 to 50 for the opposite side



51. The installation is now complete.

SAFETY