



THE MOST ADVANCED TONNEAU COVER EVER MADE



THE ROLL-N-LOCK DIFFERENCE

What sets **ROLL-N-LOCK**® apart from all other tonneau covers is not just what you can see... the rich appearance of powder coated aluminum and rugged bilaminate vinyl, but also what you cannot see... the patented design of its slatted aluminum substrate. This extruded aluminum undercarriage provides **ROLL-N-LOCK** its tough and rugged, hard cover characteristics and unmatched level of truck bed security. When you combine this blend of aesthetic refinement and structural integrity with **ROLL-N-LOCK**'s unmistakable retractable movement, you then come to understand and appreciate the **ROLL-N-LOCK** difference.



M-SERIES	4 - 7
A-SERIES	8 - 11
E-SERIES	12 - 15
CARGO MANAGER	16 - 19
APPLICATION GUIDE	20 - 21





M-SERIES

RETRACTABLE TRUCK BED COVER

INNOVATION

ROLL-N-LOCK® M-SERIES™... the most advanced retractable truck bed cover made, has redefined the rules for truck bed security. From its retractable function, which permits opening or closing in seconds, to its rigid, vinyl-over-aluminum laminated construction, this hybrid cover offers everything other covers do not. There are no snaps to manipulate, there is no roll or bundle to lash down or stow, no cross bars to negotiate, no fabric shrinkage to struggle with and, best of all, no worries about the security of cargo. The **ROLL-N-LOCK** retractable bed cover... by far the most sophisticated and versatile truck bed cover made.

QUALITY

Great quality originates from great materials, and from forward-thinking design. The **M-SERIES'** groundbreaking blend of refinement and capability stems from its revolutionary, vinyl-over-aluminum construction. Each slat is rotatively joined by an interlocking hinge. It is the geometry of this uniquely-contoured hinge that lends **ROLL-N-LOCK** its strength, roll compactness and quiet, smooth non-binding movement. Close examination of the **ROLL-N-LOCK** hinge in the flat position reveals the fact that each slat is inseparably locked together, yet when rotated no metal-to-metal contact occurs.





M-SERIES FEATURES & BENEFITS



MULTIPLE LATCHING POSITIONS

With just a turn of the lever, the **ROLL-N-LOCK** bed cover slides open. As the cover is pulled back using the convenient built-in pull strap, the patented ratchet-style locking mechanism latches in place at ¼, ½, ¾ or fully-closed positions.



UNIQUE CONSTRUCTION

A patented aluminum undercarriage lies just beneath the vinyl surface treatment, providing a tough, rigid surface with the outward appearance of a traditional soft tonneau cover. The unique, contoured hinge design provides smooth, frictionless rotation while maximizing cargo space.



LOW PROFILE DESIGN

The **M-SERIES**' sleek appearance is enhanced by a low profile, aerodynamically-styled housing lid. Black, powder coated aluminum components define its rugged, yet refined appearance.



FINGER INSULATION GRIP

A finger insulator grip allows the handle to be grasped without fingertips being burned, promising hassle-free operation in the world's hottest climates.



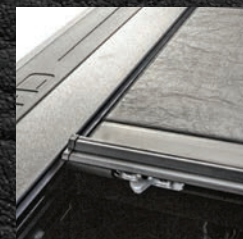
KEY SLOT COVER

Providing an extra layer of weather protection, a key slot cover keeps ice out and prevents the lock from freezing in colder climates.



CLAMP-ON INSTALLATION

ROLL-N-LOCK'S patented clamp-on track design greatly simplifies the installation process while minimizing the need for drilling holes on most trucks.



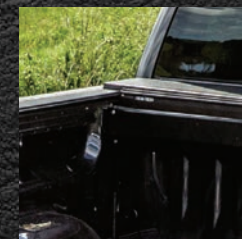
BUILT-IN TAILGATE LOCK

Keep cargo safe with the integrated tailgate lock. The patented, four-point locking system provides instant security by simultaneously securing the tailgate and bed cover. *Not available on all models.*



TORSION SPRING EQUIPPED

A torsion spring drive makes opening the cover effortless. Its heavy-duty design and 3" aluminum casing provide years of reliable operation.



COMPACT HOUSING AND FLUSH HANDLE

Averaging only 7 ¼" deep, **ROLL-N-LOCK** provides the most compact housing of any retractable truck bed cover, preserving the truck's most valuable feature – cargo space.



A-SERIES

RETRACTABLE TRUCK BED COVER

BUILT TO GO THE DISTANCE

The all-aluminum **A-SERIES** retractable tonneau cover is built with the same rugged durability as the well-known **M-SERIES**. This ground-breaking product includes a long list of innovative design features that only **ROLL-N-LOCK** can provide. The unique, powder-coated aluminum cover body of the **A-SERIES** is bound together by patented hinge technology that delivers a nearly impenetrable seam. Unlike other aluminum bed covers that provide only “out of sight, out of mind” security, **ROLL-N-LOCK'S A-SERIES** is the real deal. With no exposed rubber seams and a patented tailgate locking system, knife-wielding thieves don't stand a chance. Just like its **M-SERIES** counterpart, the **A-SERIES'** tonneau cover permits opening or closing in seconds, there are no snaps to manipulate or heavy folding panels to lift. A simple rotation of the lock lever and the cover retracts into **ROLL-N-LOCK'S** ultra-compact housing offering easy and instant access to the entire truck bed.

ENHANCED SECURITY

A chain is only as strong as its weakest link. This phrase has never been more true than in the case of retractable truck bed covers. With a brief Internet search, many truck owners will find there to be an inherent security flaw built into the majority of aluminum retractable covers. After all, what good is aluminum when a thin piece of rubber is the only thing that stands between a thief and the contents of your truck bed? By concealing its heavy-duty silicone hinge with an offset aluminum seam, the **ROLL-N-LOCK A-SERIES** is resistant to knives and other sharp objects guaranteeing a never-before-seen level of truck bed security.



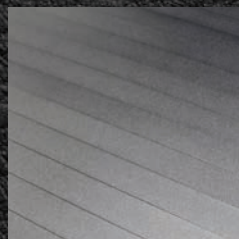


A-SERIES FEATURES & BENEFITS



THEFT RESISTANT HINGE

The **A-SERIES** is bound together by a patent pending theft resistant hinge. With no exposed rubber seams, this aluminum cover provides greater security.



POWDER COATED ALUMINUM

Built to withstand the harshest of conditions, the unique, textured powder coat aluminum cover body provides a distinctive level of strength and durability.



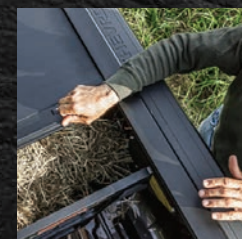
MULTIPLE LATCHING POSITIONS

With just a turn of the lever, the **ROLL-N-LOCK** bed cover slides open. As the cover is pulled back using the convenient built-in pull strap, the patented ratchet-style locking mechanism latches in place at 1/4, 1/2, 3/4 or fully-closed positions.



LOW PROFILE DESIGN

The **A-SERIES'** sleek appearance is enhanced by a low profile, aerodynamically-styled housing lid. Black, powder coated aluminum components define its rugged, yet refined appearance.



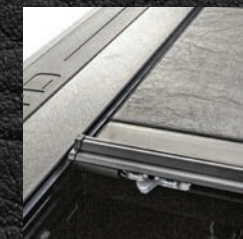
FINGER INSULATION GRIP

A finger insulator grip allows the handle to be grasped without fingertips being burned, promising hassle-free operation in the world's hottest climates.



CLAMP-ON INSTALLATION

ROLL-N-LOCK'S patented clamp-on track design greatly simplifies the installation process while minimizing the need for drilling holes on most trucks.



BUILT-IN TAILGATE LOCK

Keep cargo safe with the integrated tailgate lock. The patented, four-point locking system provides instant security by simultaneously securing the tailgate and bed cover. *Not available on all models.*



TORSION SPRING EQUIPPED

A torsion spring drive makes opening the cover effortless. Its heavy-duty design and 3" aluminum casing provide years of reliable operation.



COMPACT HOUSING AND FLUSH HANDLE

Averaging only 7 1/4" deep, **ROLL-N-LOCK** provides the most compact housing of any retractable truck bed cover, preserving the truck's most valuable feature – cargo space.



E-SERIES

ELECTRIC RETRACTABLE TRUCK BED COVER

ALL NEW. ALL POWER

When it comes to protecting your truck and gear, only the best will do. The top of the line **E-SERIES** retractable tonneau is the ultimate choice in truck bed cover convenience and security. With the push of a button, a commercial-grade electric motor automatically opens and closes the tonneau cover, allowing fast and easy access to the contents of your truck bed. A powder-coated aluminum cover body provides a rugged surface that can withstand even the toughest of environments. And, just like its **M-SERIES** and **A-SERIES** counterparts, the **E-SERIES'** tonneau cover permits opening or closing in seconds, with one very important upgrade: the convenient key fob.

QUALITY

We never compromise – and neither should you. **ROLL-N-LOCK'S E-SERIES** tonneau cover outlasts and outperforms the competition due to the high quality of its tough, powder-coated aluminum construction and unique, theft-resistant hinge design. With its never-before-seen level of truck bed security and rugged commercial motor, this is the cover to beat all covers. The cover can be stopped in any position with the convenient key fob and the pressure sensitive emergency safety-stop prevents damage to objects in the bed.





E-SERIES
FEATURES & BENEFITS



KEY FOB
The wireless key fob allows the cover to stop and lock anywhere along the length of the bed.



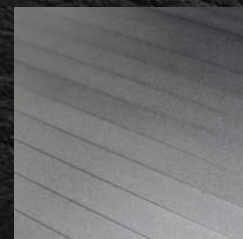
LOW PROFILE DESIGN
The sleek appearance is enhanced by a low-profile, aerodynamically-styled housing lid. Black, powder coated aluminum components define its rugged, yet refined appearance.



TORSION SPRING EQUIPPED
A torsion spring drive makes opening the cover effortless. Its heavy-duty design and 3" aluminum casing provide years of reliable operation.



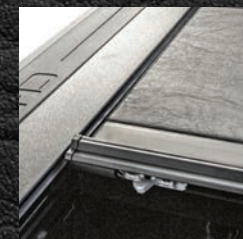
PATENTED THEFT RESISTANT HINGE
Equipped with a patented theft resistant hinge. With no exposed rubber seams, this aluminum cover provides greater security.



POWDER-COATED ALUMINUM COVER BODY
The tough-powder coated aluminum cover body comes in a matte black light textured finish. It was designed to withstand even the harshest of conditions.



CLAMP-ON INSTALLATION
Patented clamp-on track design simplifies installation while minimizing drilling.



BUILT-IN TAIL GATE LOCK
Keep cargo safe with the integrated tailgate lock. The patented, four-point locking system provides instant security.



COMPACT HOUSING
Averaging only 7 1/4" deep, **ROLL-N-LOCK** provides the most compact housing of any retractable truck bed cover, preserving the truck's most valuable feature—cargo space.



DRAINAGE
Recessed drain fittings ensure rapid and complete drainage of the unit housing.



CARGO MANAGER

ROLLING TRUCK BED DIVIDER

CARGO MANAGER[®], an optional companion product for **ROLL-N-LOCK**[®], is a movable bed divider that can be positioned every 3" along the length of the truck bed to manage and contain lightweight cargo. Controlled from the driver's side, **CARGO MANAGER** is repositioned by simply squeezing the control levers. **CARGO MANAGER'S** spring-activated mechanism then automatically pins the divider to each side track in the next nearest slot. When combined with a **ROLL-N-LOCK** retractable bed cover, this dynamic product combination gives truck owners not only the ability to cover and secure the contents of the truck bed, but also prevents objects from shifting in the bed when stopping or turning abruptly.



CARGO MANAGER

FEATURES & BENEFITS

FLIP-UP FEATURE

CARGO MANAGER quickly pivots up and out of the way for most loading chores. Its flip-up feature allows the divider to rotate 90 degrees, holding it parallel to, and 12" above, the bed floor. This is accomplished by simply depressing stops located at the ends of each track, rolling the divider back to allow the rear wheels to exit the tracks, rotating the divider 90 degrees and hanging it on the hooks provided. Long objects, such as ladders or lumber, may then be easily loaded under the divider.

EASY POSITIONING

CARGO MANAGER'S spring-loaded control levers, located on the driver's side of the divider, enable the divider to be conveniently positioned every 3" along the bed length, without the necessity of walking to both sides of the truck.

LATERAL TIE-OFFS

Laterally-adjustable tie-offs and two bungee cords permit easy securing of any size object, from tool boxes to grocery bags.

EASY REMOVAL

Weighing only 11 pounds, **CARGO MANAGER** can be easily and quickly removed for loading larger items, like appliances, which cannot slide underneath. It's convenient, easy, and versatile!



APPLICATION GUIDE

YEARS	MODEL	BED SIZE	M-SERIES	A-SERIES	E-SERIES	CARGO MANAGER
CHEVY / GMC						
2019	Silverado/Sierra 1500	5.5'	LG223M	BT223A	RC223E	CM223
2019	Silverado/Sierra 1500	6.5'	LG224M	BT224A	RC224E	CM224
15-18	Silverado/Sierra 2500 - 3500	8'	LG222M			CM222
15-18	Silverado/Sierra 2500 - 3500	6.5'	LG221M	BT221A	RC221E	CM221
15-18	Silverado/Sierra 2500-3500	5.5'	LG220M	BT220A	RC220E	CM220
14-18	Silverado/Sierra 1500	8'	LG222M			CM222
14-18	Silverado/Sierra 1500	6.5'	LG221M	BT221A	RC221E	CM221
14-18	Silverado/Sierra 1500	5.5'	LG220M	BT220A	RC220E	CM220
07-14	Silverado/Sierra 2500 - 3500	8'	LG217M			CM217
07-14	Silverado/Sierra 2500 - 3500	6.5'	LG207M			CM207
07-14	Silverado/Sierra 2500 - 3500 w/OE or Aftermarket rail caps	8'	LG219M			CM219
07-13	Silverado/Sierra 1500	8'	LG217M			CM217
07-13	Silverado/Sierra 1500	6.5'	LG207M			CM207
07-13	Silverado/Sierra 1500	5.5'	LG271M			CM271
07-13	Silverado/Sierra 1500 w/OE or Aftermarket rail caps	8'	LG219M			CM219
04-07	Silverado/Sierra (Denali) 1500 Crew Cab	5.5'	LG270M			CM270
02-07	Silverado/Sierra (Denali)	6.5'	LG208M			CM208
99-07	Silverado/Sierra	8'	LG216M			CM216
99-07	Silverado/Sierra w/OE or aftermarket rail caps	8'	LG218M			CM218
99-07	Silverado/Sierra	6.5'	LG206M			CM206
99-07	Silverado/Sierra w/OE or aftermarket rail caps	6.5'	LG208M			CM208
88-98	Silverado/Sierra	8'	LG210M			CM210
88-98	Silverado/Sierra	6.5'	LG200M			CM200
15-18	Colorado/Canyon	6'	LG262M	BT262A		CM262
15-18	Colorado/Canyon	5'	LG261M	BT261A		CM261
04-12	Colorado/Canyon, Reg & Ext Cab	6'	LG260M			CM260
04-12	Colorado/Canyon, Dbl Cab	5'	LG265M			CM265
DODGE/RAM						
2019	Ram 1500	5.5'	LG401M	BT401A	RC401E	CM401
2019	Ram 1500	6.5'	LG402M	BT402A	RC402E	CM402
10-18	Ram 1500 - 3500	8'	LG449M			CM449
10-18	Ram 1500 - 3500	6.5'	LG448M	BT448A	RC448E	CM448
09-18	Ram 1500	5.5'	LG447M	BT447A	RC447E	CM447
12-18	Ram RamBox™	6.5'	LG456M			CM456
09-18	Ram RamBox™	5.5'	LG446M			CM446
2009	Ram 2500 - 3500	8'	LG455M			CM455
2009	Ram 2500 - 3500	6.5'	LG445M			CM445
2009	Ram 1500	8'	LG449M			CM449
2009	Ram 1500	6.5'	LG448M			CM448
03-08	Ram 1500 - 3500	8'	LG455M			CM455
03-08	Ram 1500 - 3500	6.5'	LG445M			CM445
2002	Ram 1500	8'	LG455M			CM455
2002	Ram 1500	6.5'	LG445M			CM445
FORD						
17-18	F-250 & F-350 Super Duty	8'	LG152M			CM152
17-18	F-250 & F-350 Super Duty	6.5'	LG151M	BT151A	RC151E	CM151
08-16	F-250 & F-350 Super Duty	8'	LG119M			CM119
08-16	F-250 & F-350 Super Duty	6.5'	LG109M	BT109A	RC109E	CM109
99-07	F-250 & F-350 Super Duty	8'	LG117M			CM117
99-07	F-250 & F-350 Super Duty	6.5'	LG107M			CM107

YEARS	MODEL	BED SIZE	M-SERIES	A-SERIES	E-SERIES	CARGO MANAGER
FORD (CONTINUE)						
15-18	F150	8'	LG103M			CM103
15-18	F150	6.5'	LG102M	BT102A	RC102E	CM102
15-18	F150	5.5'	LG101M	BT101A	RC101E	CM101
09-14	F150	8'	LG113M			CM113
09-14	F150	6.5'	LG112M	BT112A	RC112E	CM112
09-14	F150	5.5'	LG111M	BT111A	RC111E	CM111
04-08	F-150 (3 re:2008 model only)	6.5'	LG108M			CM108
04-08	F-150 Super Cab & Super Crew (3 re:2008 model only)	5.5'	LG170M			CM170
06-08	F-150 Super Crew (3 re:2008 model only)	6.5'	LG108M			CM108
01-03	F-150 Super Crew	5.5'	LG165M			CM165
83-12	Ranger	6'	LG120M			CM120
HONDA						
17-18	Ridgeline	5'	LG721M			CM721
06-15	Ridgeline	4.5'	LG720M			N/A
ISUZU						
06-10	I-290, Reg & Ext Cab	6'	LG260M			CM260
06-10	I-370, Dbl Cab	5'	LG265M			CM265
LINCOLN						
06-08	Mark LT	6.5'	LG108M			CM108
06-08	Mark LT	5.5'	LG170M			CM170
MAZDA						
94-10	B-Series	6'	LG120M			
NISSAN						
16-18	Titan XD, Crew Cab	6.5'	LG881M			CM881
16-18	Titan, Crew Cab	5.5'	LG880M			CM880
04-15	Titan, Crew Cab	5.5'	LG825M			CM825
04-15	Titan, King Cab	6.5'	LG820M			CM820
05-17	Frontier, King Cab & Crew Cab	6'	LG802M			CM802
05-17	Frontier, Crew Cab	5'	LG807M			CM807
02-04	Frontier, Crew Cab	6'	LG800M			CM800
98-04	Frontier, Reg Cab & King Cab	6'	LG800M			CM800
85-97	'85-720, '86-'94 D21, '94-'97 Hardbody	6'	LG800M			CM800
SUZUKI						
09-12	Equator, Ext Cab & Crew Cab	6'	LG802M			CM802
09-12	Equator, Crew Cab	5'	LG807M			CM807
TOYOTA						
07-18	Tundra, Reg Cab & Double Cab	8'	LG572M			CM572
07-18	Tundra, Reg Cab & Double Cab	6.5'	LG571M	BT571A	RC571E	CM571
07-18	Tundra, Crew Max Cab	5.5'	LG570M	BT570A	RC570E	CM570
04-06	Tundra, Double Cab	6'	LG565M			CM565
00-06	Tundra, Ext Cab	6'	LG546M			CM546
16-18	Tacoma, Access Cab or Double Cab	6'	LG531M			CM531
16-18	Tacoma, Crew Cab	5'	LG530M	BT530A	RC530E	CM530
05-15	Tacoma, Reg Cab, Access Cab & Double Cab	6'	LG502M			CM502
05-15	Tacoma, Double Cab	5'	LG507M			CM507
01-04	Tacoma, Double Cab	5'	LG505M			CM505
95-04	Tacoma, Reg or Ext Cab	6'	LG500M			CM500
93-98	T-100	6.2'	LG546M			CM546
90-94	Truck, Reg or Ext Cab	6'	LG500M			CM500

