



Track Rail System

For use on fiberglass caps
Use with ROLA APE and APX cross bar kits

PART No.

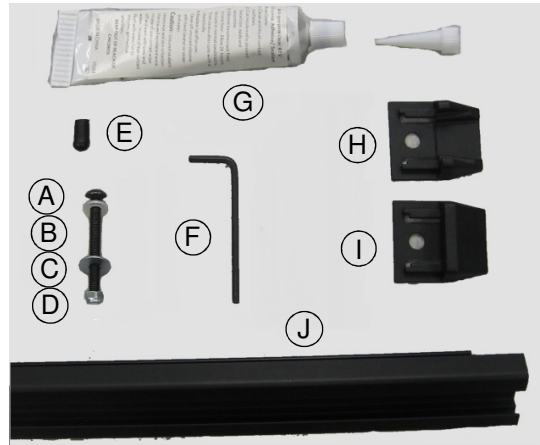
59855

Carrying Capacity

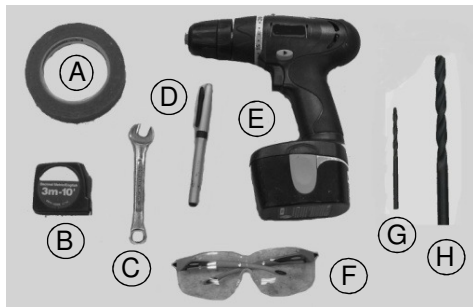
**50 kgs
110 lbs**

KIT COMPONENTS

Part	Description	Qty
A	Button head bolts M5 x 30mm	12
B	Nylon washer	12
C	Washer-M5	12
D	Hex nut- locking	12
E	Screw end protector cap	12
F	Hex key- 3mm	1
G	Silicone sealant	1
H	Track End Cap- open (Rear)	2
I	Track End Cap- closed (Front)	2
J	Track and Isolator pad	2



Tools required to install



Tools required:

A	Masking tape	E	Drill motor
B	Tape measure	F	Safety glasses
C	8mm wrench	G	1/8" Drill bit
D	Fine tip marker	H	1/4" Drill bit

Precaution Warnings before beginning

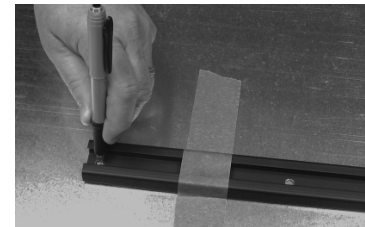
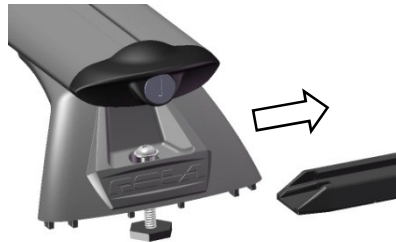
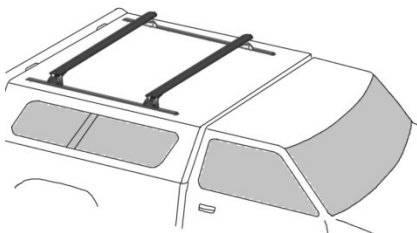
Use of ROLA track systems with bolts is intended for fiberglass top installations.
Install requires drilling and permanent installation of tracks.
Installation requires some tools and skill. If concerned please have professionally installed.



CAUTION

Caution- never exceed the load rating for your vehicle (contact manufacturer for details), or that of your cross bar system which ever is lower.

Placement of Track Rails onto Vehicle surface (truck shell shown)

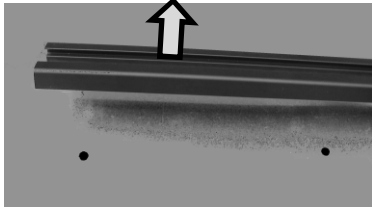


Align Tracks parallel to each other and equal distance from rear.
Hint: pre-installing your ROLA cross bars on the tracks will insure good placement.

Using a fine tip marker mark every other hole. Insure to mark the holes on each end of the tracks.
Hint: Use masking tape to hold the tracks well in place while marking. Isolator pad can be removed while marking.

Preparing fiberglass surface for mounting

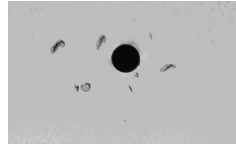
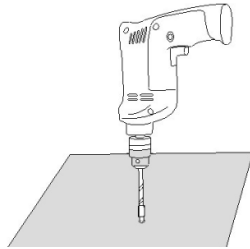
Remove rails after marking



Hint- it's not advisable to drill through the rails.



Note: wear safety glasses during installation. Drill 1/8" pilot hole and then 1/4" bolt holes.



Blow away any debris.



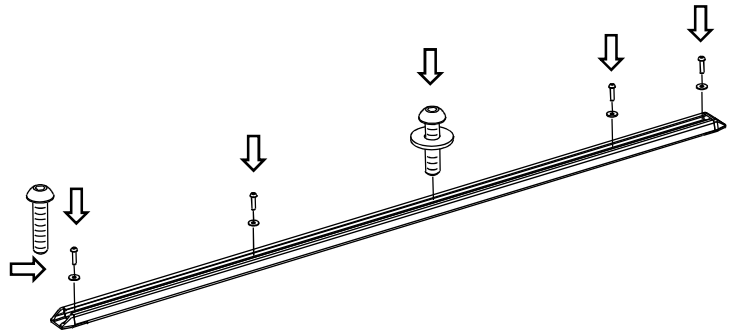
Apply a generous amount of silicone into holes before mounting rails

Installing Track Rails to mounting surface



Position isolator pad, front and rear end caps on mounting surface and align holes. Note: open ended rear end caps allow cross bars to slide on and off rails.

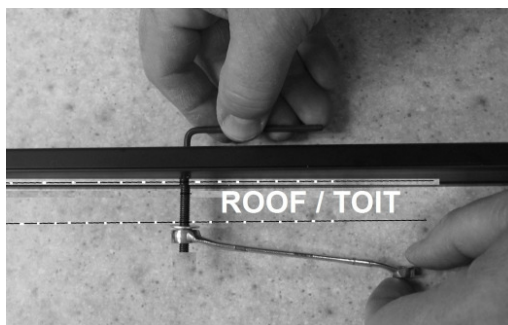
Install bolts and nylon washers into rails and through the fiberglass mounting surface.



Attaching and tightening hardware

Install from under side of mounting surface, the M5 steel washers and lock nuts. Tighten all bolts securely.

Bolts may be covered with protector caps if desired



ROLA carries a variety of cross bar styles and lengths to attach to our rails. Cross Bars are sold with mounting hardware.