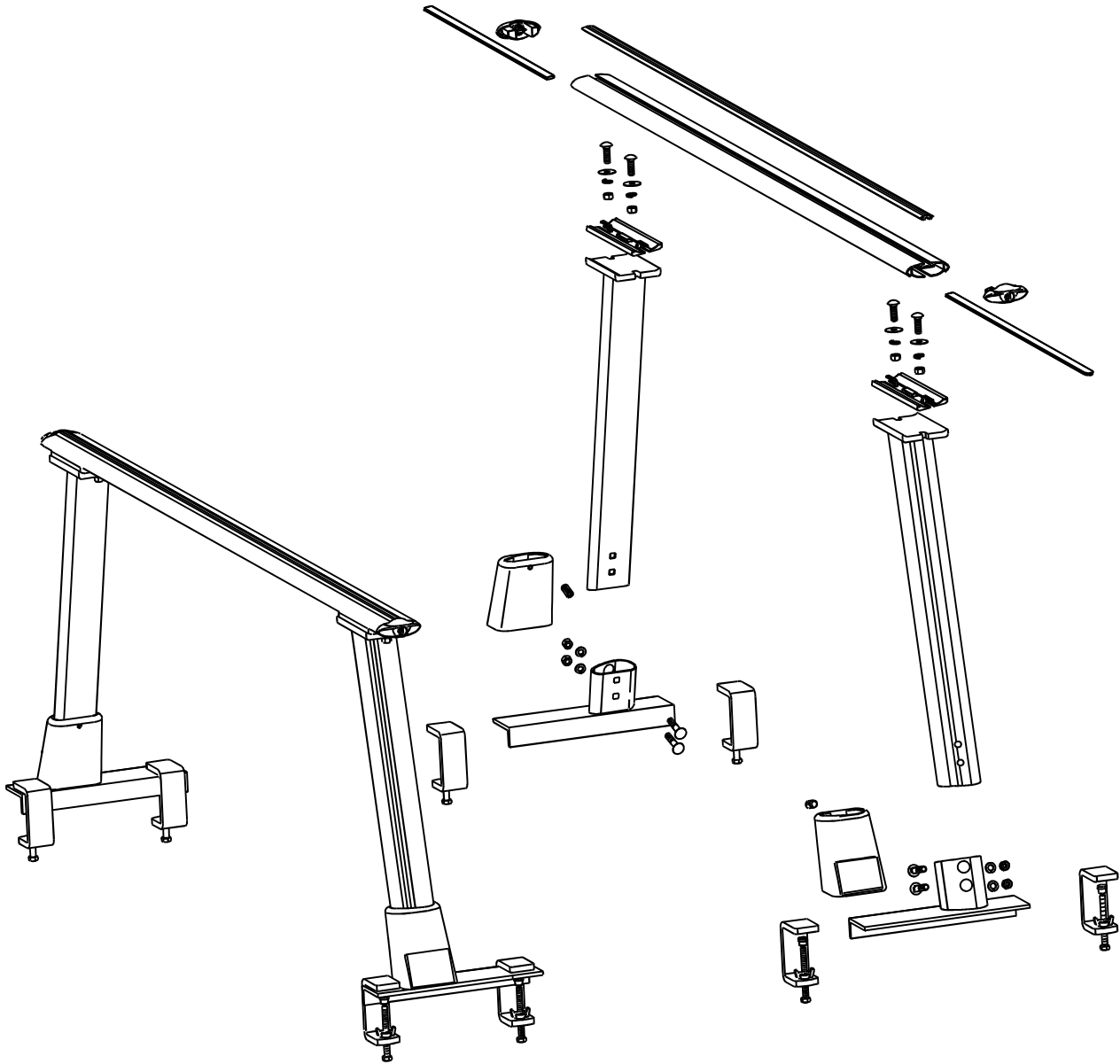


Please read all instructions carefully before assembly, installation and/or use of this product.

WARNING: DO NOT exceed 400 Lbs. (182 Kgs)
WARNING: DO NOT exceed vehicle manufacturer's weight rating.

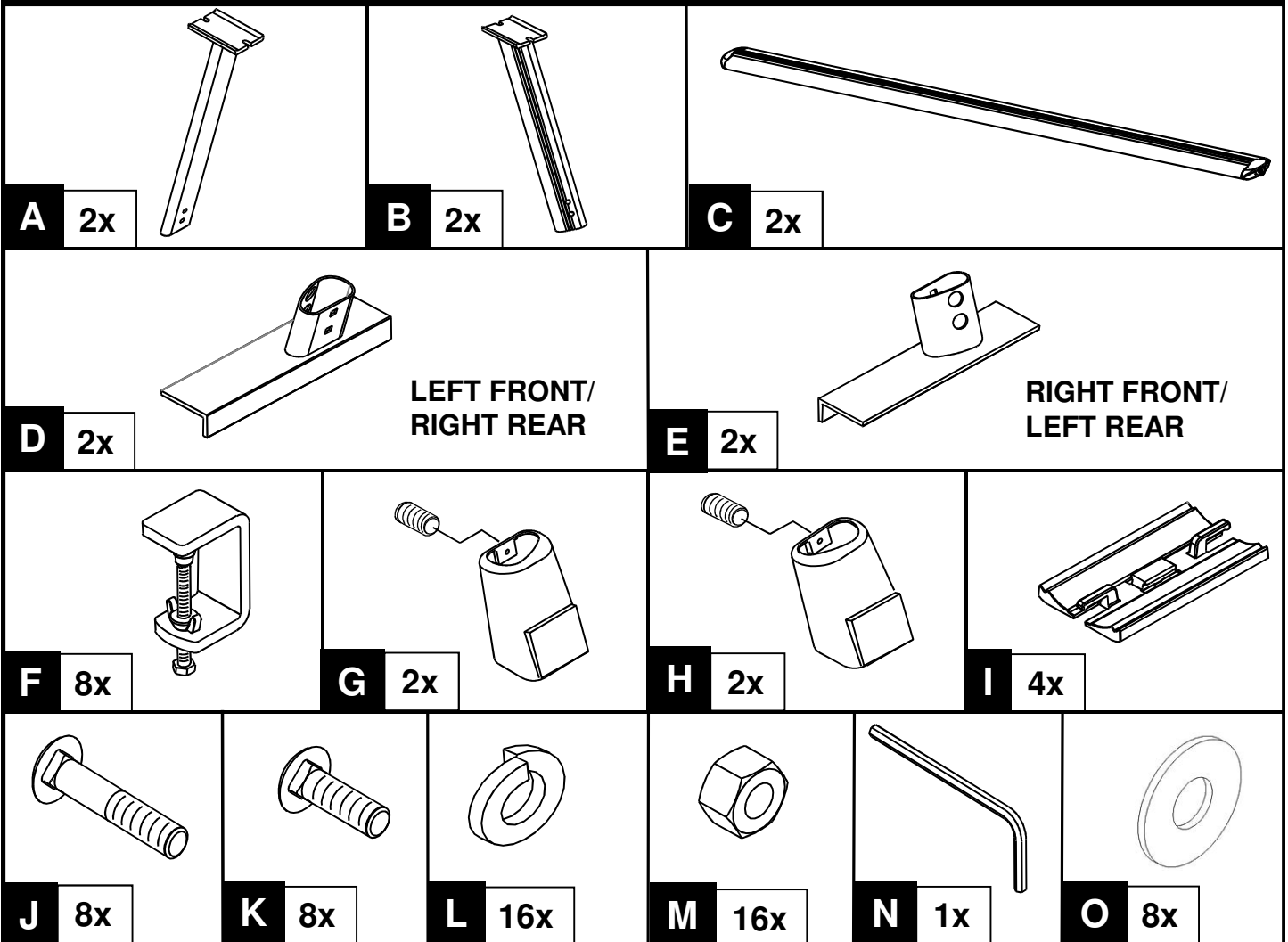
Kit Contents:



KEY FEATURES:

- Fully adjustable, fits most pick-up trucks without integrated bed rail systems
- Stainless Steel hardware
- Light-weight Aluminum extrusion
- Wear-resistant finish
- Aerodynamic design
- Easy-on bar clamps
- No-drill installation
- Double Lock anchor points

Please read all instructions carefully before assembly, installation and/or use of this product.



Tools Required:



9/16" Socket



9/16" Wrench



1/8" Hex Key



Tape Measure



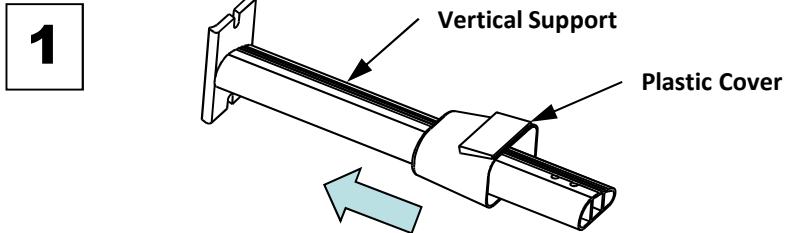
Utility knife

Parts included:

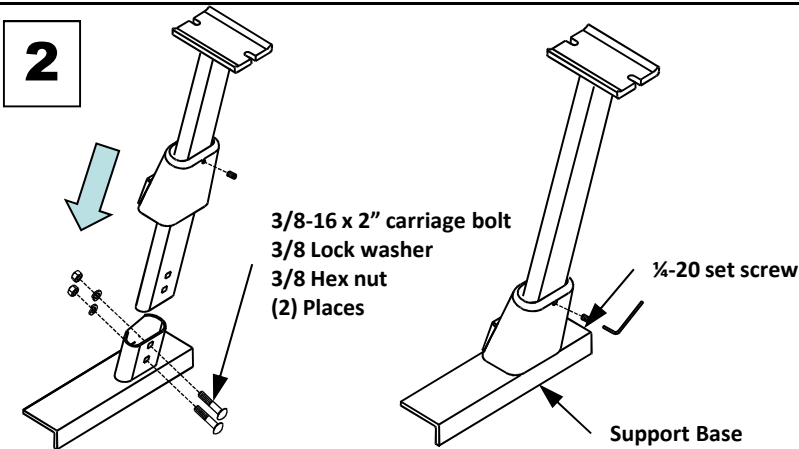
ITEM	DESCRIPTION	ITEM	DESCRIPTION
A	Vertical Support Left Hand	I	Crossbar Mounting Adapter
B	Vertical Support Right Hand	J	3/8-16 x 2.00 GR5 Carriage bolt (SS)
C	Crossbar Assembly	K	3/8-16 x 1.25 GR5 Carriage bolt (SS)
D	Support Base Left Front / Right Rear	L	3/8 Helical Lock Washer (SS)
E	Support Base Right Front / Left Rear	M	3/8-16 Hex Nut (SS)
F	Clamp	N	Hex Key Wrench 1/8"
G	Cover & 1/4-20 Set Screw LH	O	Flat Washer 3/8 (SS)
H	Cover & 1/4-20 Set Screw RH		

Please read all instructions carefully before assembly, installation and/or use of this product.

Assembly of Vertical Supports

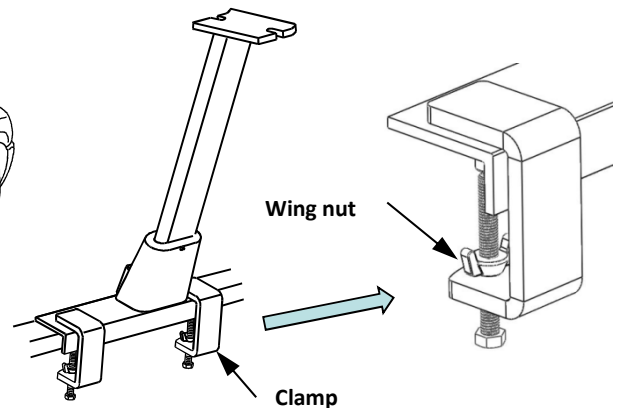
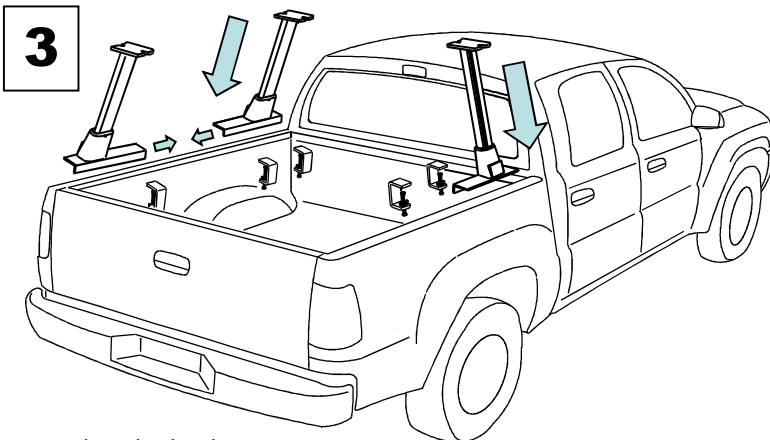


- Slide plastic cover over vertical support as shown.



- Slide vertical support and cover into Support Base.
- Install two 3/8-16 x 2" long carriage bolts through the two square holes in back of base and through vertical support.
- Install the 3/8 lock washers and hex nuts onto carriage bolts.
- Securely tighten all 3/8-16 fasteners (approximately 25 Lb.-Ft.)
- Slide cover into position and secure with 1/4-20 set screw using a 1/8" hex key wrench. **DO NOT over tighten.**
- Repeat steps for all four supports.

Vehicle Installation



- Clean bed rails.
- Place Vertical Supports onto bed rail in desired location. The long end of base must point towards the inside of truck bed.

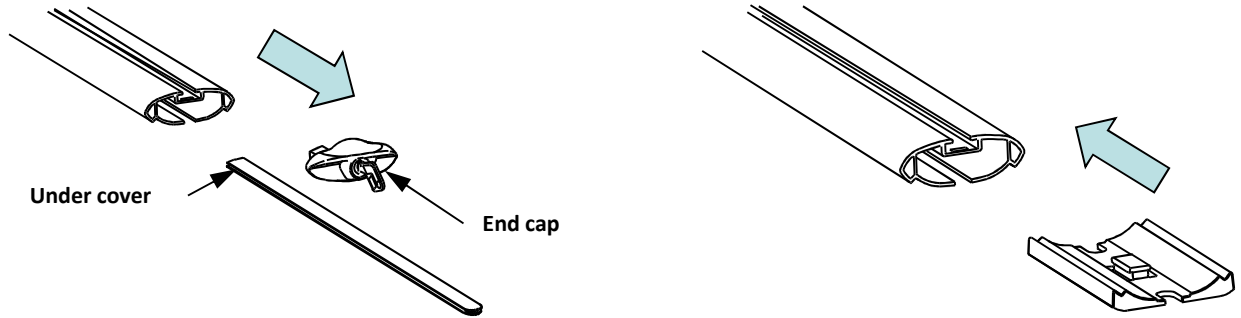
TIP: Mounting location is different for each bed design and may require adjustment to avoid interference with mounting hardware.

**** Note: Some bed liners or bedrail covers may require alteration. It may be necessary to cut away a section of the liner on the underside of the bedrail.**

- Attach clamps and hand tighten.
- Ensure both support bases are aligned front to back on bed rail, both sides.
- Confirm position of supports on bed and securely tighten clamps.
- Tighten wing nut against bottom of clamp.

Please read all instructions carefully before assembly, installation and/or use of this product.

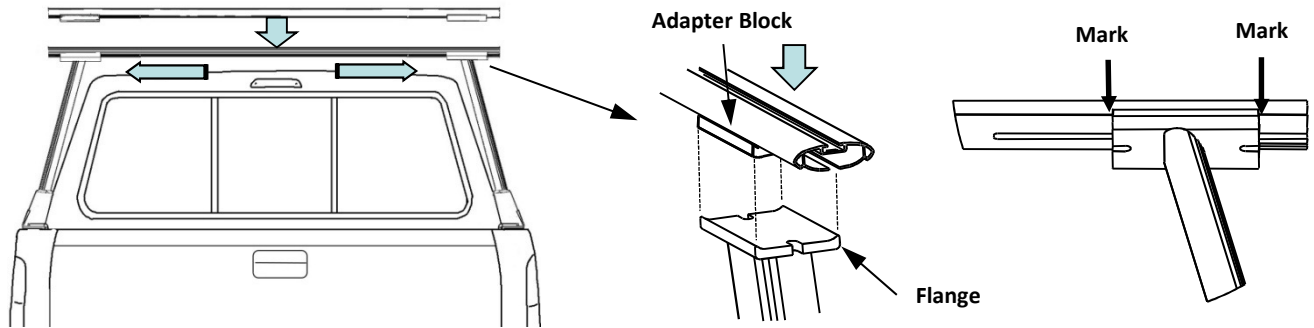
4



- Remove end cap and under cover from both ends of crossbars.

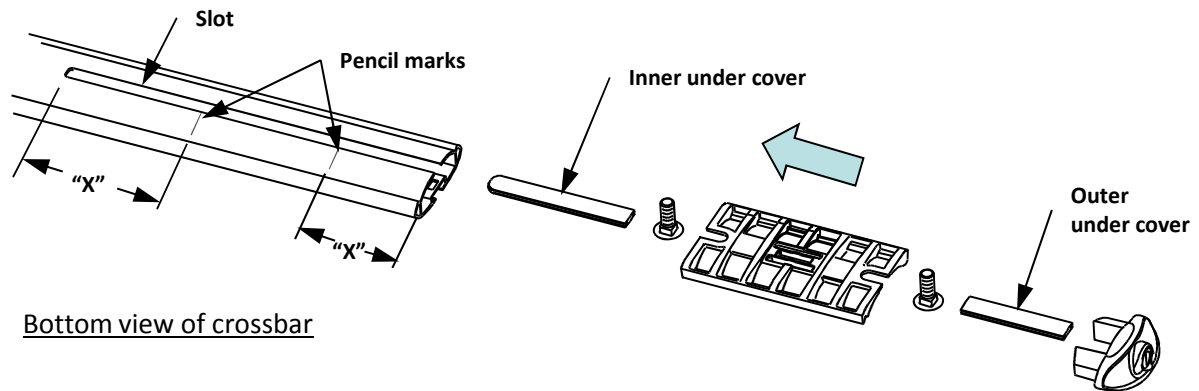
- Install Adapter Blocks into each end of crossbar.

5



- Place crossbar onto Vertical Supports and center side-to-side.
- Be sure to align the Adapter Blocks with the Vertical Supports Flanges.
- Mark with pencil the crossbar location on each side of Vertical Support Flange for under cover installation.

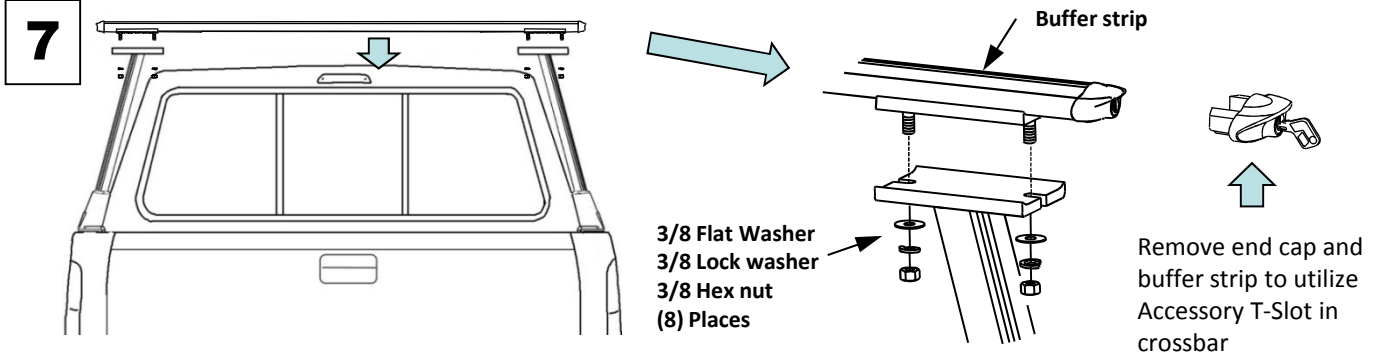
6



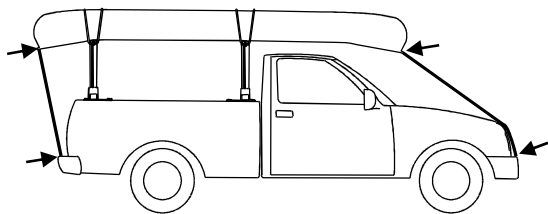
Bottom view of crossbar

- Remove crossbar from vertical supports. Remove adapter blocks from crossbars.
- Measure distance "x" from pencil marks to end of slot as shown above.
- Cut inner under cover to length first (rounded end), then cut outer under cover to length.
- Install under covers, 3/8 x 1.25 carriage bolts, adapter block and end cap to both ends of crossbars as shown.

Please read all instructions carefully before assembly, installation and/or use of this product.



- Install crossbars onto Vertical Supports, align carriage bolts with slots in Vertical Support Flanges.
- Secure crossbars to supports using the 3/8 flat washer, lock washers and hex nuts onto carriage bolts.
- Securely tighten all 3/8-16 fasteners (approximately 25 Lb.-Ft.)



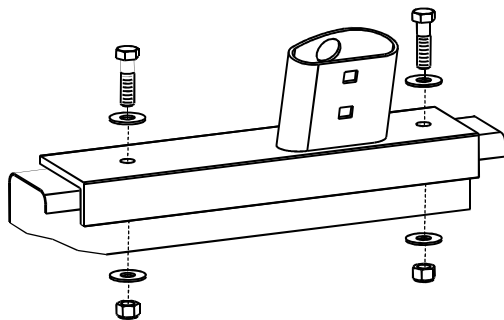
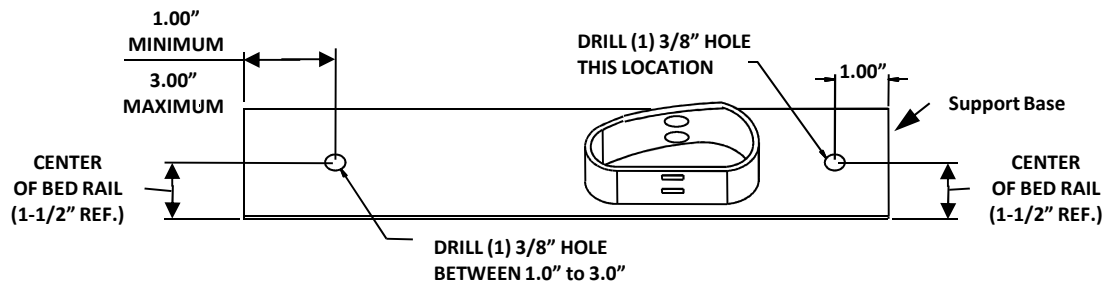
⚠ WARNING

Always secure front and rear of long loads to ends of vehicle for safe transport. Failure to do so can result in property damage, personal injury, or death.

REMOVE YOUR RACK AND ACCESSORIES WHEN NOT IN USE AND BEFORE ENTERING AUTOMATIC CAR WASHES

Optional permanent mounting

Your Pick-Up-Rack™ can be permanently mounted to your truck if you desire. You will need (8) 3/8-16 Grade 5 hex bolts, (16) 3/8" flat washers and (8) 3/8 -16 grade "A" lock nuts. Stainless steel hardware is recommended. Start by placing a piece of tape on top of the mounting base. Mark the tape as shown below. Place the mounting base on the truck and check that there will be no interference where the bolts will be placed. Remove the base from the truck and drill the (2) 3/8" holes in the marked locations on the base. Mark the truck bed rails using the drilled base as a template. Then drill the (2) 3/8" holes in truck bed rail, 4 places.



Place a 3/8" washer on a 3/8-16 bolt and insert it through the base and truck bed. Install a 3/8" washer and 3/8-16 nut on the bolt underneath the bed rail and tighten.