

ROCKHARD

PLAY HARD - CRAWL HARD - ROCK HARD **4X4**



FALL 2018

SPORT CAGES - BUMPERS - SKID PLATES - SLIDERS - AND MORE!

1987 - 2018 JEEP WRANGLER YJ/TJ/LJ/JK/JL

1955 - 1986 JEEP CJ5/CJ7/CJ8

1984 - 2001 JEEP CHEROKEE XJ

1993 - 2004 JEEP GRAND CHEROKEE ZJ/WJ

1966 - 1977 FORD BRONCO

TABLE OF CONTENTS

JL JEEP WRANGLER (2018 - CURRENT)

SPORT CAGESCOMING SOON!
FRONT BUMPERS7
REAR BUMPERS13
SKID PLATES11
SLIDERS10

JK JEEP WRANGLER (2007 - 2018)

SPORT CAGES15
FRONT BUMPERS17
REAR BUMPERS22
SKID PLATES25
SLIDERS27

LJ JEEP WRANGLER (2003 - 2006)

SPORT CAGES29
FRONT BUMPERS31
REAR BUMPERS33
SLIDERS - SKID PLATES35

TJ JEEP WRANGLER (1997 - 2006)

SPORT CAGES29
FRONT BUMPERS31
REAR BUMPERS33
SLIDERS - SKID PLATES35

YJ JEEP WRANGLER (1987 - 1995)

SPORT CAGES37
FRONT BUMPERS31
REAR BUMPERS33
SLIDERS - SKID PLATES35

CJ8 JEEP SCRAMBLER (1981 - 1986)

SPORT CAGES36
FRONT BUMPERS31
REAR BUMPERS33
SLIDERS - SKID PLATES35

CJ7 JEEP (1976 - 1986)

SPORT CAGES39
FRONT BUMPERS31
REAR BUMPERS33
SLIDERS - SKID PLATES35

CJ5 JEEP (1955 - 1983)

SPORT CAGES41
FRONT BUMPERS31
REAR BUMPER35

XJ JEEP CHEROKEE (1984 - 2001)

SPORT CAGES43
FRONT BUMPER45
REAR BUMPERS47
SLIDERS46
SKID PLATES48

ZJ JEEP GRAND CHEROKEE (1993 - 1998)

SPORT CAGES49
FRONT BUMPER51
REAR BUMPERS53
SLIDERS - SKID PLATES52

WJ JEEP GRAND CHEROKEE (1999 - 2004)

SPORT CAGES50
FRONT BUMPER51
REAR BUMPERS53
SLIDERS52

FORD BRONCO (1966 - 1977)

BUMPERS56
----------------	----------------

POWDER COAT1
FABRICATION COLLARS55
FLAT TOWING2
LIGHT MOUNTS6
NEW PRODUCTS3
SHOOTING TARGETS55
UNIVERSAL PARTS5



ROCK HARD 4x4 reserves the right to change any catalog content, including pricing, at any time without notice. Any product return is subject to a 15% restocking fee. Some photos included in this catalog, as well on the official ROCK HARD 4x4 website, or any dealer website or search result, may vary from actual product received. Some photos may include options not included in actual product. Product specifications may change without notice.

All products are intended for off road use only - check with local or state laws prior to use. Please use products responsibly as off roading is inherently dangerous. Buyer assumes all risk. ROCK HARD 4x4 accepts all major credit cards.

MADE IN USA. NO EXCUSES.

Every single ROCK HARD 4x4 product we produce must safeguard the legacy started in 1991. We set out to build a premium line of Jeep armor and safety upgrades in the USA, and we have not compromised since.

100% MADE IN NEBRASKA.

There is a certain level of quality you can only maintain when you build parts in the United States, under your own roof, with family members running the show.

No compromise, no excuses.

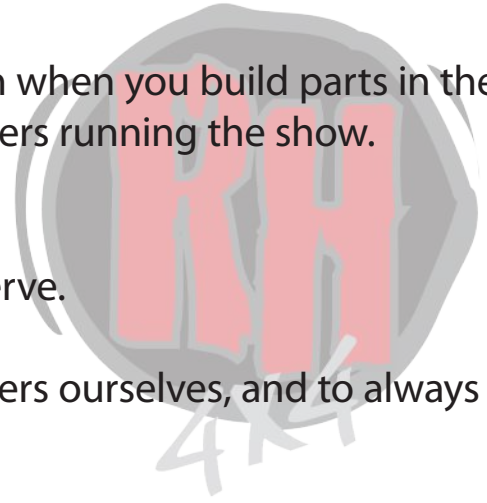
OUR PROMISE TO YOU.

We promise to give you the customer service you deserve.

We promise to promptly correct any error we make.

We promise to remember our roots, that we are wheelers ourselves, and to always love what we do.

Simply put, we promise to care.



“I THINK WE'RE ON TO SOMETHING HERE DAD...”

James Barth to father Lew, circa 1991 when a row of Jeeps at Tierra Del Sol each had a Rock Hard 4x4 part installed - proving wheelers had embraced their 100% family owned company and American made product.

Click play and learn how to install your next ROCK HARD 4x4 upgrade! We spent the first half of 2015 filming easy to follow, hi-definition videos with step by step, wrench by wrench instructions aimed to help you “get er’ done” and experience ROCK HARD 4x4 quality! Don’t believe our parts are that easy to install? Watch and see for yourself!



MOBILE DEVICE READY



POWDER COAT FINISH

DURABLE, GREAT LOOKING, AND COATED IN THE USA

Quality from start to finish! We professionally powder coat in house to ensure your Rock Hard 4x4 upgrade has a premium, durable, and beautiful coating.

We describe our coating as a semi-smooth, semi-gloss finish. It feels like an egg shell (20% texture) which makes it scratch resistant and cuts down on glare. Rough "hammered" finishes have large pores that make it nearly impossible to wipe away dirt and mud, and mirror-like glossy finishes scratch with even a light touch. Often rough finishes are used to mask poor welds and stress cracks during bending, and high gloss coatings show their wear very quickly. Many years ago we outsourced powder coating and had no control over quality. Now, from prep to media blasting to coating to curing, we have total control over how our products present themselves.

Cleaning: put that heavy duty dishwasher detergent away. Most contain properties that are damaging to even the clear coat on your paint. Mild soaps are ideal. Remove salt and adverse weather road sprays as quickly as possible. Off-road, rinse, repeat!



FLAT TOWING SOLVED

ALL ROCK HARD 4X4 FRONT BUMPERS CAN BE UPGRADED WITH OUR LASER CUT TOW BAR BRACKET ADAPTERS! DON'T GIVE UP YOUR GROUND CLEARANCE WITH A BASE PLATE - FLAT TOW SAFELY AND SECURELY WITH ROCK HARD 4X4!

OUR 100% MADE IN THE USA ROCK HARD 4X4™ TOW BAR ADAPTER KITS ALLOW YOU TO FLAT TOW YOUR JEEP WRANGLER JL, JK AND TJ/LJ. THESE EASY TO INSTALL SYSTEMS MATE TO YOUR ROCK HARD 4X4™ FRONT BUMPER AND ADAPT TO BLUE-OX™, REESE™, AND ROAD MASTER™ TOW BARS.

ALL ROCK HARD 4X4™ STEEL AND ALUMINUM JK AND SELECT TJ/LJ FRONT BUMPERS ARE COMPATIBLE WITH OUR TOWING BRACKET KITS. JUST ADD A TOW VEHICLE!

"THESE BRACKETS BOLT RIGHT TO THE BUMPER AT ITS FRAME MOUNTING LOCATIONS AND ELIMINATE HAVING A LOW SLUNG TOW BAR BASE PLATE THAT CAN GET DAMAGED ON OFF-ROAD TRAILS."

- RVMAGONLINE "TWEAKING AN ICON", JULY 2012

TOW BAR BRACKET ADAPTERS

BLUE OX / DEMCO / READY-BRUTE

#RH-8000-BO

ROAD MASTER

#RH-8000-RM

REESE

#RH-8000-RS



NEW RH4X4 PRODUCTS

THE LATEST AND GREATEST PARTS MANUFACTURED IN THE USA

JL FACTORY FRONT BUMPER WINCH MOUNTING PLATES

- FITS MOST POPULAR WINCHES
- BLACK POWDER COAT FINISH

PLASTIC FRONT BUMPER

#RH-90205

STEEL FRONT BUMPER

#RH-90206.....COMING SOON



BOLT ON CONTROL ARM SKID PLATES

- 1/4" THICK STEEL
- BLACK POWDER COAT FINISH
- 100% BOLT-ON INSTALLATION
- HARDWARE INCLUDED

JL 2018 - CURRENT

FRONT #RH-90513

REAR #RH-90514

COMBO #RH-90515

JK 2007 - 2018

FRONT #RH-9030

REAR #RH-9031

COMBO #RH-9032

TJ/LJ/XJ 1984 - 2006

FRONT #RH-9030

REAR #RH-9033



HARDHAT DIFF GUARD

DANA 30

RED #RH-9050

BLACK #RH-9052

RAW #RH-9054

DANA 44

RED #RH-9051

BLACK #RH-9053

RAW #RH-9055

MOLLE CAGE CARGO WRAPS

2007 - 2018 2/4DR FRONT

*REQUIRES RH-1030 OR RH-1030-1L

#RH-1401

2007 - 2018 4DR REAR

*REQUIRES RH-1030-A

#RH-1402

2007 - 2018 2DR REAR

*REQUIRES RH-1030-C

#RH-1403

1997 - 2006 TJ/LJ FRONT

*REQUIRES RH-1001

#RH-1404

1987 - 1995 YJ FRONT

*REQUIRES RH-1002

#RH-1405



EACH INCLUDES 1 FIXED MOLLE CARGO POUCH WITH HEAVY DUTY ZIPPERS. PRECISION FIT WITH INDUSTRIAL GRADE HOOK AND LOOP FASTENER FASTENS TO RH4X4 CAGE TUBING. STORE FLASHLIGHTS, TOOLS, GLOVES, AND MORE! WORKS WITH FACTORY HARD AND SOFT TOP PLUS OUR MOLLE CAGE CARGO WRAPS ARE COMPATIBLE WITH POPULAR SHADES LIKE SPIDERWEBSHADE AND BARTACT!

NEW RH4X4 PRODUCTS

THE LATEST AND GREATEST PARTS MANUFACTURED IN THE USA

HAWSE AND ROLLER FAIRLEAD LICENSE PLATE MOUNT

UNIVERSAL FITMENT

#RH-4004

SIMPLE INSTALLATION
 FITS MOST POPULAR FAIRLEADS
 STAINLESS STEEL HARDWARE
 POWDER COATED BLACK
 LAYNARD INCLUDED



DOUBLEWALL CROSSMEMBER UPGRADES

- 3/16" THICK STEEL DOUBLE WALL = 3/8" THICK
- BLACK POWDER COAT FINISH
- 100% BOLT-ON INSTALLATION
- AUTO / MANUAL TRANS COMPATIBLE

2007 - 2011 3.8L

#RH-9060

2012 - 2018 3.6L

#RH-9061



SQUARE LIGHT / ROUND HOLE ADAPTERS FOR RH4X4 BUMPER

- BLACK POWDER COAT FINISH
- SOLD AS A PAIR
- LIGHTS SOLD SEPARATE

FITS ALL ROCK HARD 4X4 FRONT BUMPERS
#RH-6063



SHOULDER HARNESS BELT HOLSTER

2" WIDE BELT - SOLD INDIVIDUALLY (PER SEAT)

#RH-1450

3" WIDE BELT - SOLD INDIVIDUALLY (PER SEAT)

#RH-1451



SEATBELT "DING" DELETE

#RH-1470

FITS YJ/TJ/JK 1987 - 2018
 DISABLES SEAT BELT CHIME
 SOLD INDIVIDUALLY

TRAIL STEP

2007 - 2018 JK 2/4DR FRONT

#RH-6015.....COMING SOON

1997 - 2006 TJ - YJ

#RH-6016

EASILY SLIPS INTO DOOR SILL
 CONVENIENT STEP FOR LIFTED JEEPS
 *TUBE STYLE SLIDER REQUIRED.



UNIVERSAL RH4X4 PRODUCTS

UNIVERSAL FITMENT WITH UNMATCHED QUALITY



3RD BRAKE LIGHT

#RH-2002-T

FITS 2-1/2" BORE HOLES
MOUNTS TO TIRE CARRIER
SOME WIRING REQUIRED
CONNECTORS INCLUDED



5-WAY ACCESSORY MOUNT

*SHIPS BARE ALUMINUM - UNCOATED

#RH-1021

FITS 1-3/4" OD TUBING



FAIRLEAD PLATE MOUNTS

#RH-4004

HAWSE FAIRLEAD MOUNT

#RH-4006-F

ROLLER FAIRLEAD MOUNT



ALUMINUM GRAB HANDLE

*SHIPS BARE ALUMINUM - UNCOATED

6" #RH-1020-S

12" #RH-1020-L

FITS 1-3/4" OD TUBING



STEERING STABILIZER / TIE ROD CLAMP

1.375" OD JEEP JK 07-18 FACTORY TIE ROD

#RH-9000

*DESIGNED FOR AFTERMARKET STABILIZER WITH 1/2" PIN
1-5/8" OD OVERSIZED TIE ROD

#RH-9001

*DESIGNED FOR AFTERMARKET STABILIZER WITH 1/2" PIN
1-3/4" OD OVERSIZED TIE ROD

#RH-9002

*DESIGNED FOR AFTERMARKET STABILIZER WITH 1/2" PIN
1-1/2" OD OVERSIZED TIE ROD

#RH-9003

*DESIGNED FOR AFTERMARKET STABILIZER WITH 1/2" PIN

RECOVERY D-RING

#RH-4003

9,500 LB 3/4" CLEVIS
SOLD INDIVIDUALLY
(MADE OVERSEAS)



NON-SLIP GRAB HANDLE

#RH-1025

HOOK AND LOOP
FASTENER - UNIVERSAL
SOLD INDIVIDUALLY



LICENSE PLATE MOUNT W/ LED BRAKE + TAG LIGHT

#RH-4006 - LED PLATE

AND 3RD BRAKE LIGHT
WITH RELOCATION KIT
INCLUDES #RH-4007
POWDER COAT INCLUDED



LICENSE PLATE MOUNT

#RH-4007

LICENSE PLATE MOUNT ONLY
POWDER COAT INCLUDED

OFF-ROAD LIGHT MOUNTS

WHEEL PAST SUNSET WITH OUR HEAVY DUTY LIGHT MOUNTS

ALL LIGHTS SOLD SEPARATELY



20" LED HOOD MOUNTS

JK 2/4DR 07-18

#RH-6051

TJ/LJ 97-06

#RH-6068

HARDWARE INCLUDED
POWDER COAT INCLUDED
NO DRILLING OR CUTTING

THE EASIEST AND MOST AFFORDABLE WAY TO ADD BIG LED BARS TO YOUR JK! OUR HOOD MOUNTS ARRIVE POWDER COATED AND READY TO INSTALL. EXCLUSIVE RUBBER FEET PREVENT SCRATCHING AND THE STAINLESS BOLTS PREVENT CORROSION. USE THE LASER CUT SLOTS TO SECURE YOUR ZIP TIES FOR A CLEAN LOOKING INSTALLATION!



WINDSHIELD MOUNTS

JL 2/4DR 18-CURRENT

#RH-90601

JK 2/4DR 07-18

#RH-6050

TJ/LJ/YJ 87-06

#RH-6067

NO DRILLING OR CUTTING

ADD OFF ROAD LIGHTS IN UNDER 5 MINUTES! OUR WINDSHIELD (A-PILLAR) LIGHT MOUNTS REQUIRE NO DRILLING OR CUTTING AND USE YOUR OEM HARDWARE SO YOU KNOW THEY'LL FIT SNUGLY AND SECURELY. THEY ARRIVE POWDER COATED AND USE COMMON HAND TOOLS TO INSTALL IN MINUTES. FITS ALL POPULAR PODS AND UP TO 6" HID LIGHTS! PRO TIP: ANGLE YOUR LIGHTS SLIGHTLY OUTWARD TO HELP ON TURNS!

WINCH FAIRLEAD LIGHT MOUNT

*LIGHTS SOLD SEPARATELY

#RH-6065

FITS ALL ROLLER AND HAWSE FAIRLEADS
POWDER COAT INCLUDED
NO DRILLING OR CUTTING

LICENSE PLATE LIGHT MOUNT - "LPLM"

*LIGHTS SOLD SEPARATELY

#RH-6066

11 GAUGE THICK STEEL
POWDER COAT INCLUDED



Authorized Distributor
Contact us to add any
KC HiLITES light to your order.



JL FULL WIDTH BUMPERS

JEEP JL 2/4DR (2018 - CURRENT)

- 1/4" THICK STEEL OR ALUMINUM
- FITS FACTORY FOG LIGHTS
- LIGHT TABS INCLUDED
- TUBULAR WINCH GUARD
- 1" THICK RECOVERY TABS
- POWDER COAT INCLUDED
- HARDWARE INCLUDED
- SWAY BAR SKID PLATE INTEGRATED
- NO DRILLING REQUIRED
- BUILT IN WINCH PLATE

THESE BUMPERS ARE FLAT TOWABLE WITH ROCK HARD 4X4 TOW BAR BRACKETS
SEE PAGE 2 FOR MORE INFORMATION



Authorized Distributor
Contact us to add any
WARN Winch to your order.



HAWSE AND ROLLER FAIRLEAD LICENSE PLATE MOUNT
UNIVERSAL FITMENT
#RH-4004



FULL WIDTH LOWERED WINCH
STEEL (137 LBS)
#RH-90211

ALUMINUM (37 LBS!)
#RH-90245

- 69-1/4" WIDE
- FITS ALL POPULAR WINCHES INCLUDING WARN ZEON
- 30% MORE GRILLE AIRFLOW THAN STANDARD WINCH MOUNT



FULL WIDTH STANDARD WINCH
STEEL (137 LBS)
#RH-90210

ALUMINUM (37 LBS!)
#RH-90244

- FAIRLEAD MOUNT INCLUDED IF ADDING WINCH LATER



JL MID-WIDTH BUMPERS

JEEP JL 2/4DR (2018 - CURRENT)

- 1/4" THICK STEEL OR ALUMINUM
- FITS FACTORY FOG LIGHTS
- LIGHT TABS INCLUDED
- TUBULAR WINCH GUARD
- 1" THICK RECOVERY TABS

- POWDER COAT INCLUDED
- HARDWARE INCLUDED
- SWAY BAR SKID PLATE INTEGRATED
- NO DRILLING REQUIRED
- BUILT IN WINCH PLATE

THESE BUMPERS ARE FLAT TOWABLE WITH ROCK HARD 4X4 TOW BAR BRACKETS

SEE PAGE 2 FOR MORE INFORMATION



Authorized Distributor
Contact us to add any
WARN Winch to your order.



HAWSE AND ROLLER FAIRLEAD LICENSE PLATE MOUNT
UNIVERSAL FITMENT

#RH-4004



MID WIDTH LOWERED WINCH

STEEL (135 LBS)

#RH-90216

ALUMINUM (37 LBS!)

#RH-90248

- 56-1/4" WIDE
- FITS ALL POPULAR WINCHES INCLUDING WARN ZEON
- 30% MORE GRILLE AIRFLOW THAN STANDARD WINCH MOUNT



MID WIDTH STANDARD WINCH

STEEL (135 LBS)

#RH-90215

ALUMINUM (37 LBS!)

#RH-90249

- FAIRLEAD MOUNT INCLUDED IF ADDING WINCH LATER



JL GRILLE WIDTH BUMPERS

JEEP JL 2/4DR (2018 - CURRENT)

- 1/4" THICK STEEL
- FITS FACTORY FOG LIGHTS
- 1" THICK RECOVERY TABS
- POWDER COAT INCLUDED

- HARDWARE INCLUDED
- NO DRILLING REQUIRED
- WINCH FAIRLEAD MOUNT INCLUDED
- FLAT TOWABLE (BRACKETS SOLD SEP)



Authorized Distributor
Contact us to add any
WARN Winch to your order.



HAWSE AND ROLLER FAIRLEAD LICENSE PLATE MOUNT
UNIVERSAL FITMENT

#RH-4004



GRILLE WIDTH STANDARD WINCH
STEEL

#RH-90200

INCLUDES LOWER SWAY BAR MOTOR AND CRASH BAR PROTECTING SKID PLATE. NO FRAME HORN OR CRASH BAR MODIFICATION REQUIRED.

GRILLE WIDTH LOWERED WINCH
STEEL

#RH-90202

HIGH CLEARANCE DESIGN FOR THOSE WHO WANT TO "FRAME CHOP" THEIR LOWER CRASH BAR.



BOLT-ON SKID PLATE FOR RH-90202
OPTIONAL

#RH-90209

BOLT ON 1/4" THICK STEEL SKID PLATE FOR OUR HIGH CLEARANCE FRONT BUMPER.

BOLT ON WINCH GUARD WITH LIGHT TABS
OPTIONAL

#RH-90208

LIGHT TABS FIT VIRTUALLY ALL 10" LED LIGHT BARS OR INDIVIDUAL POD LIGHTS.

TUBULAR ROCKER GUARDS

JEEP JL 2/4DR (2018 - CURRENT)

- MOUNTS TO BODY MOUNTS, FLOOR, PINCH WELD
- 2" X 3" RECTANGULAR RAIL COVERS PINCH WELD
- FUNCTIONAL 3.5" STEP OUT FROM BODY
- TAPERED ENDS FOR OVERSIZE TIRE CLEARANCE
- STRONG ENOUGH TO LIFT RECOVER FROM
- NO DRILLING REQUIRED
- POWDER COAT INCLUDED
- HARDWARE INCLUDED



JL TUBULAR 4DR ROCKER GUARDS

ANGLED UP

#RH-90104

ANGLED DOWN

#RH-90106

FLAT STEP WITH SILVER LOGO PLATES

#RH-90105



JL TUBULAR 2DR ROCKER GUARDS ANGLED UP

#RH-90100

ANGLED DOWN

#RH-90102

FLAT STEP WITH SILVER LOGO PLATES

#RH-90101

3/8" BODY MOUNT PLATING

3/16" FLOOR MOUNT PLATING

PINCH WELD



SKID PLATES

JEEP JL 2/4DR (2018 - CURRENT)

THE ORIGINAL, TRUSTED, AND MOST PROVEN SKID PLATE SYSTEM ON THE MARKET FOR THE JEEP WRANGLER JL!

THE UPDATED SUSPENSION AND INCREASED FENDER FLARE CLEARANCE OF THE JEEP JL REQUIRES LESS LIFT TO INCREASE TIRE SIZE. LESS LIFT MEANS MORE DRAGGING YOUR UNDERCARRIAGE AND DRIVETRAIN ALL OVER THE ROCKS!

2 NEW 1" BY 2" THICK STEEL CNC MACHINED CROSSMEMBERS EXTEND FROM DRIVER TO PASSENGER SIDE FRAME RAILS AND NOT ONLY GIVE OUR SKID PLATES THE FOUNDATION THEY NEED TO PROTECT YOUR DRIVETRAIN, BUT ALSO TAKE TWIST AND FLEX OUT OF YOUR FRAME.

COMPLETE SKID PLATE SYSTEM

- OIL PAN / TRANSMISSION SKID PLATE
- TRANSFER CASE SKID PLATE
- RESONATOR SKID PLATE
- FUEL TANK SKID PLATE
- DUAL 1" X 2" STEEL CROSSMEMBERS
- TAPERED WASHERS
- HARDWARE

FEATURES

- 3/16" STEEL OR 1/4" ALUMINUM
- 100% BOLT-ON DESIGN
- DUAL 1" THICK X 2" WIDE STEEL CROSSMEMBERS
- POWDER COAT INCLUDED
- ALL HARDWARE INCLUDED
- EXCLUSIVE TAPERED BOLT HEAD PROTECTORS
- EXCLUSIVE OIL CHANGE ACCESS DOOR

COMPLETE BELLYPAN SKID PLATE SYSTEM WITH DUAL CROSSMEMBERS

2018 - CURRENT JL 4DR - STEEL @ 260 LBS

#RH-90509

2018 - CURRENT JL 4DR - ALUMINUM @ 140 LBS

#RH-90549

2018 - CURRENT JL 2DR - STEEL

#RH-90508

2018 - CURRENT JL 2DR - ALUMINUM

#RH-90548

CONTROL ARM SKIDS

1/4" THICK STEEL
HEAVY DUTY HARDWARE
BLACK POWDER COAT
100% BOLT ON INSTALL

FRONT 2018 - CURRENT JL

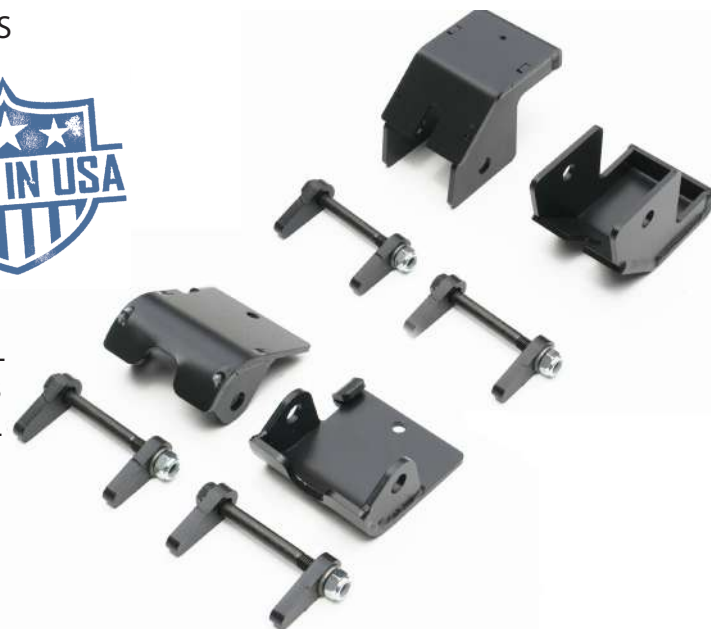
#RH-90513

REAR 2018 - CURRENT JL

#RH-90514

FRONT + REAR

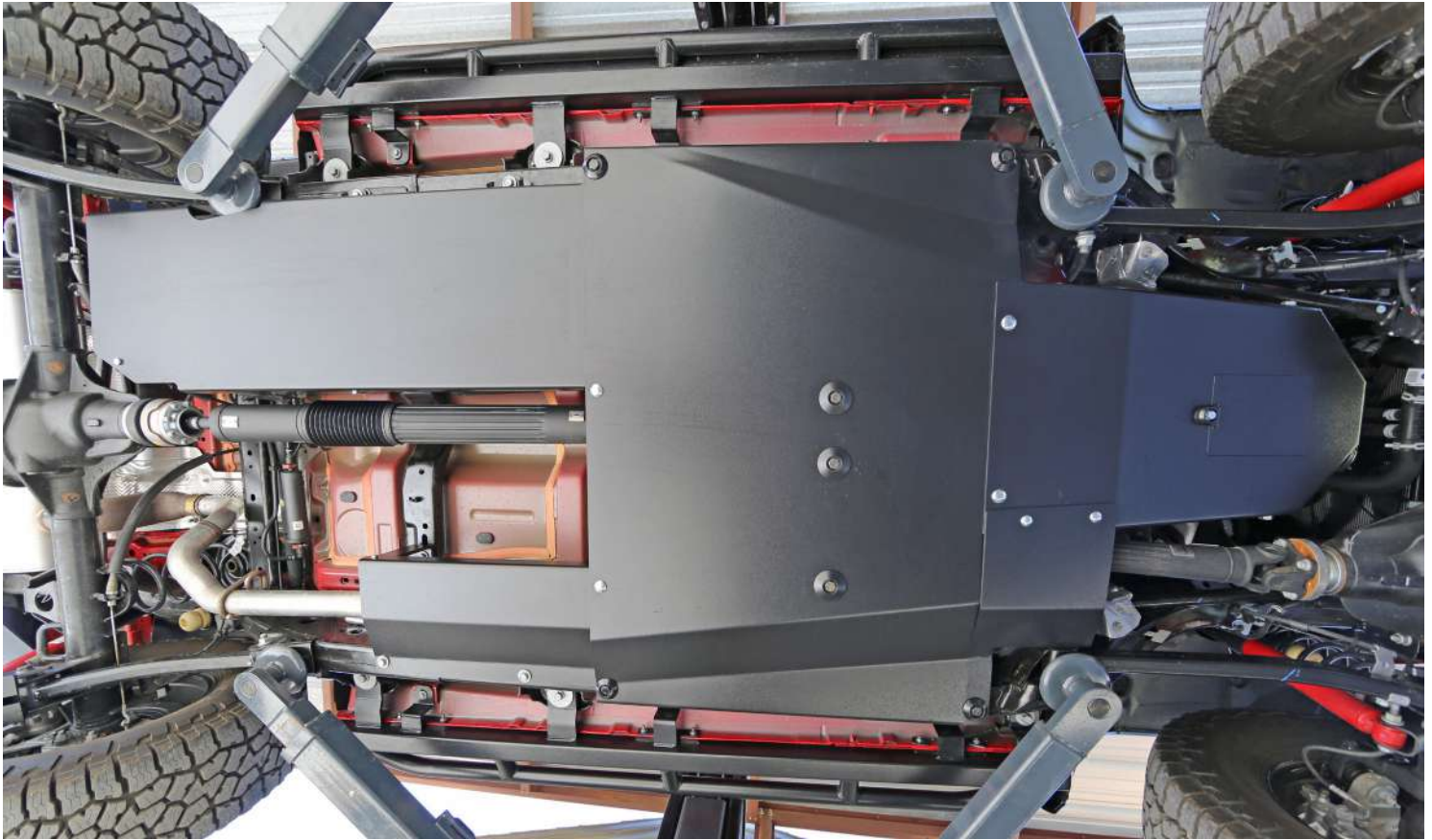
#RH-90515



BELLYPAN SKID PLATE SYSTEM

JEEP JL 2/4DR (2018 - CURRENT)

THE ORIGINAL, TRUSTED, AND MOST PROVEN SKID PLATE SYSTEM ON THE MARKET FOR THE JEEP WRANGLER JL!



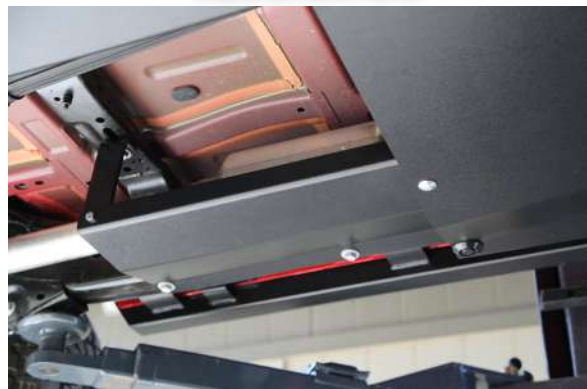
TRANSFER CASE BELLY PAN

OIL PAN & TRANSMISSION



FUEL TANK

RESONATOR



JL REAR BUMPERS + TIRE CARRIER

JEEP JL 2/4DR (2018 - CURRENT)

- 100% BOLT ON REAR BUMPER
- AVAILABLE IN 1/4" THICK STEEL OR ALUMINUM
- TIRE CARRIER AVAILABLE ON STEEL BUMPER ONLY
- POWDER COAT INCLUDED
- HI-LIFT JACK MOUNT INCLUDED
- CB ANTENNA MOUNT INCLUDED
- 1" THICK RECOVERY TABS
- PARKING SENSOR MOUNTS INCLUDED
- BACK UP SENSOR MOUNTS INCLUDED
- BACK UP CAMERA COMPATIBLE
- LICENSE PLATE MOUNT/LIGHT COMPATIBLE
- OPTIONAL TANK MOUNTS
- OPTIONAL CARGO BASKET



JL REAR BUMPER MODELS

STEEL WITH TIRE CARRIER

#RH-90301 *BUILT-IN RECEIVER

STEEL BUMPER ONLY

#RH-90300 *BUILT-IN RECEIVER

ALUMINUM BUMPER ONLY

40 LBS!

#RH-90340 *USES OEM RECEIVER



JL BODY MOUNT TIRE CARRIER

JEEP JL 2/4DR (2018 - CURRENT)

- SUPPORTS UP TO 37" SPARE TIRE
- 100% BOLT-ON DESIGN
- ZERO DRILLING OR CUTTING REQUIRED
- POWDER COAT INCLUDED
- ALL HARDWARE INCLUDED
- EXCLUSIVE BILLET ALUMINUM HINGE BRACES
- ADJUSTABLE SPARE TIRE MOUNT FOR CLEARANCE / VISIBILITY - 6"
- HI-LIFT JACK MOUNT INCLUDED
- CB ANTENNA MOUNT INCLUDED
- BACKUP CAMERA COMPATIBLE
- FACTORY 3RD BRAKE LIGHT COMPATIBLE



CARRIER MOUNT OPTIONS

COMPLETE UPGRADE

#RH-90350

ADJUSTABLE TIRE RACK

BILLET HINGE BRACES

HI-LIFT JACK MOUNT

CB ANTENNA MOUNT

MAX TIRE SIZE 37"

6" ADJUSTABLE TIRE RACK ONLY

#RH-90347

MAX TIRE SIZE 35"

BILLET ALUMINUM HINGE BRACES

#RH-90345

MAX TIRE SIZE 37"

STRONGEST WAY TO ADD LARGER TIRES WITHOUT CHANGING REAR BUMPER! EXTREME DUTY BILLET ALUMINUM BRACES SUPPORT ADDED WEIGHT OF OVERSIZED WHEELS AND TIRES. EASY TO INSTALL WITH ZERO DRILLING. TAILGATE OPERATES LIKE FACTORY. INCLUDED ADJUSTABLE TIRE RACK LIFTS YOUR TIRE AND WHEEL FROM FACTORY HEIGHT ALL THE WAY UP TO 6".



SOLID BILLET ALUMINUM HINGE BRACES
SUPPORT UP TO 37" TIRE - ADJUSTABLE MOUNT
FOR 6" UP/DOWN AND IN/OUT OF MOVEMENT

CB ANTENNA MOUNT INCLUDED
WITH 2 DIFFERENT MOUNTING
LOCATIONS AVAILABLE

USES FACTORY SPARE TIRE MOUNT SO NO
CHANGE NEEDED TO MAINTAIN BACK UP
CAMERA AND 3RD BRAKE LIGHT



JACK MOUNT INCLUDED



CB ANTENNA MT INCLUDED



WORKS WITH CAMERA



JK SPORT CAGE

JEEP WRANGLER JK 2/4DR UNLIMITED (2007 - 2018)

**PREMIUM - PATENTED - PROVEN "THE ORIGINAL BOLT IN CAGE"
REQUIRES NO WELDING - PATENTED STEEL LOCKING COLLARS**

JK ULTIMATE SPORT CAGE

*SHIPS BARE STEEL - UNCOATED

2007 - 2010 2/4DR MAIN SPORT CAGE

#RH-1030

2011 - 2018 2/4DR MAIN SPORT CAGE

#RH-1030-1L

OPTIONAL T-SECTION PADDING KIT

#RH-1030-TP

OPTIONAL T-SECTION MOLLE CARGO WRAP

#RH-1401

MAIN SPORT CAGE INCLUDES:

- OVERHEAD T-SECTION
- DRIVER + PASSENGER DASH UPRIGHTS
- LOWER WINDSHIELD BAR
- WELDED GRAB HANDLES
- OVERHEAD ACCESSORY MOUNTING PLATE
- SHIPS BARE STEEL/UNCOATED
- FACTORY HARD/SOFT TOP COMPATIBLE



JK SPORT CAGE UPGRADES

JEEP JK 2/4DR (2007 - 2018)



REAR OVERHEAD CENTER BARS (2007 - 2018)

*SHIPS BARE STEEL - UNCOATED

JK 4DR/UNLIMITED

#RH-1030-A

JK 2DR *RH-1030-B REQUIRED

#RH-1030-C

CONNECTS SPEAKER BAR TO REAR HOOP

MAIN (FRONT) SPORT CAGE NOT REQUIRED

DRILLING REQUIRED

OPTIONAL 4DR REAR PADDING KIT

#RH-1030-RCP4

OPTIONAL 2DR REAR PADDING KIT

#RH-1030-RCP2



HARNESS BARS (2007 - 2018)

*SHIPS BARE STEEL - UNCOATED

*PADDING KIT SHOWN SOLD SEPARATELY.

FRONT JK 4DR/UNLIMITED

#RH-1030-SFH4

FRONT JK 2DR

#RH-1030-SFH2

FRONT HARNESS BAR PAD KIT

#RH-1030-SFHP

REAR JK 4DR/UNLIMITED

#RH-1030-RH4

REAR JK 2DR

#RH-1030-RH2

REAR HARNESS BAR PAD KIT

#RH-1030-RHP



3RD ROW 4DR (2007 - 2018)

*SHIPS BARE STEEL - UNCOATED

JK 4DR/UNLIMITED ONLY

#RH-1032

3RD ROW PADDING KIT

#RH-1032-RP

OEM HARD/SOFT TOP COMPATIBLE

USES PATENTED LOCKING COLLARS

(SPRING ASSIST SOFT TOP NOT COMPATIBLE)



C-PILLAR BRACE KIT 4DR (2007 - 2018)

*SHIPS BARE STEEL - UNCOATED

JK 4DR/UNLIMITED ONLY

#RH-1035

C-PILLAR PADDING KIT

#RH-1035-P

- STRENGTHENS PASSENGER AREA
- OEM HARD/SOFT TOP COMPATIBLE
- USES PATENTED LOCKING COLLARS
- SOME DRILLING REQUIRED
- FITS 4DR UNLIMITED ONLY
- ZERO WELDING REQUIRED!



STRAIGHT ACROSS REAR BAR 2DR (2007 - 2018)

*SHIPS BARE STEEL - UNCOATED

*RH-1030-C SHOWN IN PHOTO, SOLD SEPARATELY

JK 2DR ONLY

#RH-1030-B

- CONNECTS DRIVER + PASS SIDE BARS
- OEM HARD/SOFT TOP COMPATIBLE
- MAIN SPORT CAGE NOT REQUIRED
- 100% BOLT IN INSTALL
- USES PATENTED LOCKING COLLARS

ACCESSORY MOUNT BAR 4DR (2007 - 2018)

JK 4DR/UNLIMITED ONLY

#RH-1034

MOUNT SPEAKERS, LIGHTS, ETC!



JK FULL WIDTH BUMPERS

JEEP JK 2/4DR (2007 - 2018)

- 1/4" THICK STEEL OR ALUMINUM
- FITS FACTORY FOG LIGHTS
- LIGHT TABS INCLUDED
- TUBULAR WINCH GUARD
- 1" THICK RECOVERY TABS
- POWDER COAT INCLUDED
- HARDWARE INCLUDED
- SWAY BAR SKID PLATE INTEGRATED
- NO DRILLING REQUIRED
- BUILT IN WINCH PLATE

THESE BUMPERS ARE FLAT TOWABLE WITH ROCK HARD 4X4 TOW BAR BRACKETS
SEE PAGE 2 FOR MORE INFORMATION



Authorized Distributor
Contact us to add any
WARN Winch to your order.



HAWSE AND ROLLER FAIRLEAD LICENSE PLATE MOUNT
UNIVERSAL FITMENT
#RH-4004



FULL WIDTH LOWERED WINCH
STEEL (137 LBS)
#RH-5005

ALUMINUM (37 LBS!)
#RH-5045

2012+ 3.L VAC PUMP RELOCATION KIT
REQUIRED
#RH-5011

- 69-1/4" WIDE
- FITS ALL POPULAR WINCHES INCLUDING WARN ZEON
- 30% MORE GRILLE AIRFLOW THAN STANDARD WINCH MOUNT



FULL WIDTH STANDARD WINCH
STEEL (137 LBS)
#RH-5006

ALUMINUM (37 LBS!)
#RH-5046

- FAIRLEAD MOUNT INCLUDED IF ADDING WINCH LATER



JK GRILLE WIDTH BUMPERS

JEEP JK 2/4DR (2007 - 2018)

- 1/4" THICK STEEL OR ALUMINUM
- FITS FACTORY FOG LIGHTS
- LIGHT TABS INCLUDED
- TUBULAR WINCH GUARD
- 1" THICK RECOVERY TABS

- POWDER COAT INCLUDED
- HARDWARE INCLUDED
- SWAY BAR SKID PLATE INTEGRATED
- NO DRILLING REQUIRED
- BUILT IN WINCH PLATE

THESE BUMPERS ARE FLAT TOWABLE WITH ROCK HARD 4X4 TOW BAR BRACKETS
SEE PAGE 2 FOR MORE INFORMATION



Authorized Distributor
Contact us to add any
WARN Winch to your order.



HAWSE AND ROLLER FAIRLEAD LICENSE PLATE MOUNT
UNIVERSAL FITMENT
#RH-4004



GRILLE WIDTH STANDARD WINCH

STEEL

#RH-5001-B

ALUMINUM (35 LBS!)

#RH-5041



GRILLE WIDTH LOWERED WINCH

STEEL

#RH-5002

ALUMINUM (35 LBS!)

#RH-5042

STEEL W/ 2" RECEIVER

#RH-5020

2012+ 3.6L VAC PUMP KIT

#RH-5011



18" TALL STINGER!

GRILLE WIDTH STANDARD WINCH STINGER

STEEL

#RH-5007



GRILLE WIDTH LOWERED WINCH STINGER

STEEL

#RH-5008

STEEL W/ 2" RECEIVER

#RH-5021



JK PRERUNNER BUMPERS

JEEP JK 2/4DR (2007 - 2018)

- 1/4" THICK STEEL OR ALUMINUM
- FITS FACTORY FOG LIGHTS
- LIGHT TABS INCLUDED
- TUBULAR WINCH GUARD
- 1" THICK RECOVERY TABS
- POWDER COAT INCLUDED
- HARDWARE INCLUDED
- SWAY BAR SKID PLATE INTEGRATED
- NO DRILLING REQUIRED
- BUILT IN WINCH PLATE

THESE BUMPERS ARE FLAT TOWABLE WITH ROCK HARD 4X4 TOW BAR BRACKETS
SEE PAGE 2 FOR MORE INFORMATION



ACCEPTS FACTORY FOG LIGHTS



LOWERED WINCH PLATE

PRERUNNER STANDARD WINCH

#RH-5003

INCLUDES PROVISION FOR OEM FOG LIGHTS
INCLUDES LIGHT TABS ON WINCH GUARD
DOES NOT REQUIRE VACUUM PUMP RELOC KIT



PRERUNNER LOWERED WINCH

#RH-5004

30% MORE GRILLE AIRFLOW
NO FOG LIGHT CUTOUT
INCLUDES LIGHT TABS ON WINCH GUARD

*RH-5011 REQUIRED ON
2012 - 2018 JEEP JK'S

JK OEM BUMPER UPGRADES

JEEP JK 2/4DR (2007 - 2018)

**100% BOLT ON 3/16" THICK STEEL SKID PLATES FOR YOUR FACTORY FRONT BUMPER
REPLACES PLASTIC OR THIN STAMPED STEEL AIR DAM WITH HEAVY DUTY SKID PLATE
ALL HARDWARE INCLUDED - BLACK POWDER COAT FINISH**



PLASTIC/X/SPORT/SAHARA/RUBICON

#RH-6070

LASER CUT / CNC BENT
3/16" THICK PLATE STEEL CONSTRUCTION
ROUNDED BOLT HEADS PREVENT DAMAGE



STEEL/HARD ROCK/RECON/10A

#RH-6071

LASER CUT / CNC BENT
3/16" THICK PLATE STEEL CONSTRUCTION
ROUNDED BOLT HEADS PREVENT DAMAGE

JK OEM BUMPER UPGRADES

JEEP JK 2/4DR (2007 - 2018)

HEAVY DUTY WINCH PLATES FOR YOUR FACTORY AND SPECIAL EDITION JK FRONT BUMPERS!
BOLTING ON A ROCK HARD 4X4 WINCH PLATE ALLOWS YOU TO KEEP YOUR FACTORY BUMPER
PLUS INCREASES YOUR OFF ROAD RECOVERY CAPABILITY.

**FITS ALL POPULAR WINCHES INCLUDING
ZEON AND POWERPLANT!**

*RH-5010 SHOWN



100% BOLT ON WINCH PLATE

JK FACTORY BUMPER WINCH PLATES

2007 - 2018 JK JEEP PLASTIC FRONT BUMPER

#RH-5010

ZERO CUTTING, WELDING, DRILLING!
FITS ZEON AND POWERPLANT WINCHES
DOES NOT REQUIRE VAC PUMP RELOC KIT
BRACES WITH OEM TOW HOOKS (REQ'D)
HARDWARE INCLUDED

10A/HARD ROCK EDITION STEEL BUMPER

#RH-5017

ZERO CUTTING, WELDING, DRILLING!
FITS ZEON AND SIDE SPOOL WINCHES
HARDWARE INCLUDED

*RH-5011 REQUIRED ON
2012 - 2018 JEEP JK'S

GRILLE GUARD AND LIGHT MOUNT FOR RH-5017

#RH-5019

WARN POWERPLANT INSTALL KIT FOR RH-5017

#RH-5018



Authorized Distributor
Contact us to add any
WARN Winch to your order.



*RH-5010 SHOWN



WINCH PLATE GRILLE GUARD PLUS WELDED LIGHT TABS

*RH-5010 REQUIRED
*FITS OEM PLASTIC BUMPER ONLY
STANDARD WINCH + LIGHT TABS

#RH-5013

TALL WINCH + LIGHT TABS (POWERPLANT)

#RH-5014

STANDARD WINCH + NO LIGHT
TABS #RH-5015



OEM BUMPER LIGHT MOUNT AND GRILLE GUARD

LIGHT MOUNT 10" WIDE LIGHT BAR TABS OR
INDIVIDUAL LIGHT PODS
*FITS OEM PLASTIC BUMPER ONLY

#RH-6060

LIGHT MOUNT + GRILLE GUARD
HOOP. FITS 10" LIGHT BAR OR
INDIVIDUAL LIGHT PODS

*FITS OEM PLASTIC BUMPER ONLY

#RH-6061



JK MID-WIDTH BUMPERS

JEEP JK 2/4DR (2007 - 2018)

- 1/4" THICK STEEL OR ALUMINUM
- FITS FACTORY FOG LIGHTS
- LIGHT TABS INCLUDED
- TUBULAR WINCH GUARD
- 1" THICK RECOVERY TABS
- POWDER COAT INCLUDED
- HARDWARE INCLUDED
- SWAY BAR SKID PLATE INTEGRATED
- NO DRILLING REQUIRED
- BUILT IN WINCH PLATE

THESE BUMPERS ARE FLAT TOWABLE WITH ROCK HARD 4X4 TOW BAR BRACKETS
SEE PAGE 2 FOR MORE INFORMATION



Authorized Distributor
Contact us to add any
WARN Winch to your order.



HAWSE AND ROLLER FAIRLEAD LICENSE PLATE MOUNT
UNIVERSAL FITMENT
#RH-4004



MID WIDTH LOWERED WINCH

STEEL (137 LBS)

#RH-5022

STEEL (137 LBS) WITH 2" RECEIVER

#RH-5024

ALUMINUM (37 LBS!)

#RH-5048

2012+ 3.L VAC PUMP RELOCATION KIT
REQUIRED

#RH-5011

- 56-1/4" WIDE
- FITS ALL POPULAR WINCHES INCLUDING WARN ZEON
- 30% MORE GRILLE AIRFLOW THAN STANDARD WINCH MOUNT



MID WIDTH STANDARD WINCH

STEEL (137 LBS)

#RH-5023

ALUMINUM (37 LBS!)

#RH-5049

- FAIRLEAD MOUNT INCLUDED IF ADDING WINCH LATER



JK BODY MOUNT TIRE CARRIER

JEEP JK 2/4DR (2007 - 2018)

- 100% BOLT ON
- USES FACTORY HOLES IN BODY AND TAILGATE
- 1/2" THICK BRONZE OIL LITE BUSHINGS
- POWDER COAT INCLUDED
- HI-LIFT JACK MOUNT INCLUDED
- CB ANTENNA TAB INCLUDED
- ADJUSTABLE FOR TIRE SIZE AND WHEEL OFFSET
- SUPPORTS UP TO 37" TIRE
- OPTIONAL CARGO BASKET
- OPTIONAL ROTOPAX MOUNT
- OPTIONAL PAINTABLE LOGO PLATES



JK BODY MOUNT TIRE CARRIER
TIRE CARRIER
#RH-5050

PASSENGER / RIGHT TANK MOUNT
#RH-5052
FITS SINGLE ROTOPAX 2, 3, 4 GAL
(TANKS SOLD SEPARATELY)

DRIVER / LEFT SIDE TANK MOUNT
COMING SOON

CARGO BASKET
#RH-5053
MAX CAPACITY: 50 LBS
MAX TIRE SIZE 35"

EASY TO INSTALL WITH ZERO CUTTING, DRILLING, OR WELDING REQUIRED. TAILGATE OPERATES JUST LIKE FACTORY USING THE FACTORY HANDLE TO OPEN AND SHUT THE TIRE CARRIER. HEAVY DUTY BRONZE OIL LITE BUSHINGS AND MASSIVE 1/2" BOLTS FIRMLY SECURE THE TIRE CARRIER TO OUR 1/4" THICK STEEL HINGE SIDE MOUNTING BRACKETS.



1/4" THICK STEEL GUSSET SUPPORTS
UP TO 37" TIRE - ADJUSTABLE MOUNT
FOR 4" UP/DOWN AND IN/OUT OF MOVEMENT

CB ANTENNA MOUNT INCLUDED
WITH 4 DIFFERENT MOUNTING
LOCATIONS AVAILABLE

HI-LIFT JACK MOUNT INCLUDED
SECURED SAFELY UNDER SPARE
HORIZONTAL MOUNTING POSITION



ADJUSTABLE MOUNT



CB ANTENNA MT INCLUDED



HI-LIFT JACK MOUNT



JK REAR BUMPERS + TIRE CARRIER

JEEP JK 2/4DR (2007 - 2018)

- 100% BOLT ON REAR BUMPER
- 1/4" THICK STEEL OR ALUMINUM
- POWDER COAT INCLUDED
- HI-LIFT JACK MOUNT INCLUDED
- CB ANTENNA MOUNT INCLUDED
- 1" THICK RECOVERY TABS
- HIGH CLEARANCE TAPERED WINGS
- DUAL TAPERED BEARING HUB ASSEMBLY
- EASY GREASABLE ZERK FITTING
- ADJUSTBLE TIRE MOUNT
- 3-POINT PRELOAD FOR RATTLE FREE USE
- SUPPORTS UP TO 38" TIRE
- EXCLUSIVE TAILGATE BAR
- 2" RECEIVER INCLUDED



JK REAR BUMPER MODELS

STEEL WITH TIRE CARRIER

#RH-5001

STEEL BUMPER ONLY

#RH-5000

ALUMINUM BUMPER ONLY @40 LBS!

USES OEM RECEIVER

#RH-5040



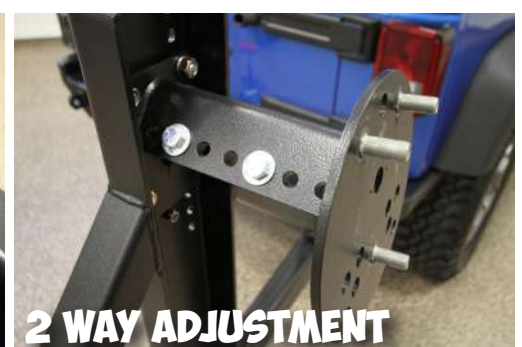
RH-5040 SHOWN



23 2 STAGE LATCH



DROP DOWN SAFETY PIN



2 WAY ADJUSTMENT

REAR BUMPER UPGRADES

JEEP JK 2/4DR (2007 - 2018)



TIRE CARRIER ROCK RACK CARGO BASKET

#RH-2004

- SUPPORTS UP TO 100 LBS!
- 100% BOLT ON INSTALL
- ADJUSTABLE HEIGHT BASKET
- POWDER COAT INCLUDED
- GAIN NEARLY 5 SQ. FT. OF CARGO SPACE!
- FITS 2"X2" SQUARE TUBE 45° CARRIERS
- INSIDE DIMS: 5-1/4" X 18-1/4" X 38-1/2"

TIRE CARRIER TANK MOUNTS

LEFT DRIVER SIDE #RH-2003-LT

RIGHT PASSENGER SIDE #RH-2003-RT

- FITS NATO, ROTOPAX AND CO2 TANKS
- CB ANTENNA MOUNT TAB INCLUDED
- 100% BOLT ON INSTALL
- ADJUSTABLE HEIGHT
- POWDER COAT INCLUDED
- SECURE ADJUSTABLE STRAPS INCLUDED



BUMPER MOUNTED MUFFLER SKID PLATE

STEEL *RH-5001 OR RH-5000 REAR BUMPER REQUIRED

#RH-5001-A

ALUMINUM *RH-5040 REQUIRED

#RH-5047



SPARE TIRE ADAPTER BRACKET

#RH-5000-R

MOVES SPARE TIRE UP AND OUT 1.5"
ALLOWS FOR OVERSIZED SPARES ON
OEM CARRIER



LICENSE PLATE MOUNT

#RH-4006

LED PLATE AND 3RD
BRAKE LIGHT WITH
RELOCATION KIT

#RH-4007

PLATE MOUNT, NO LIGHT



3RD BRAKE LIGHT

#RH-2002-TL

FITS 2-1/2" BORE HOLES
MOUNTS TO TIRE CARRIER
SOME WIRING REQUIRED

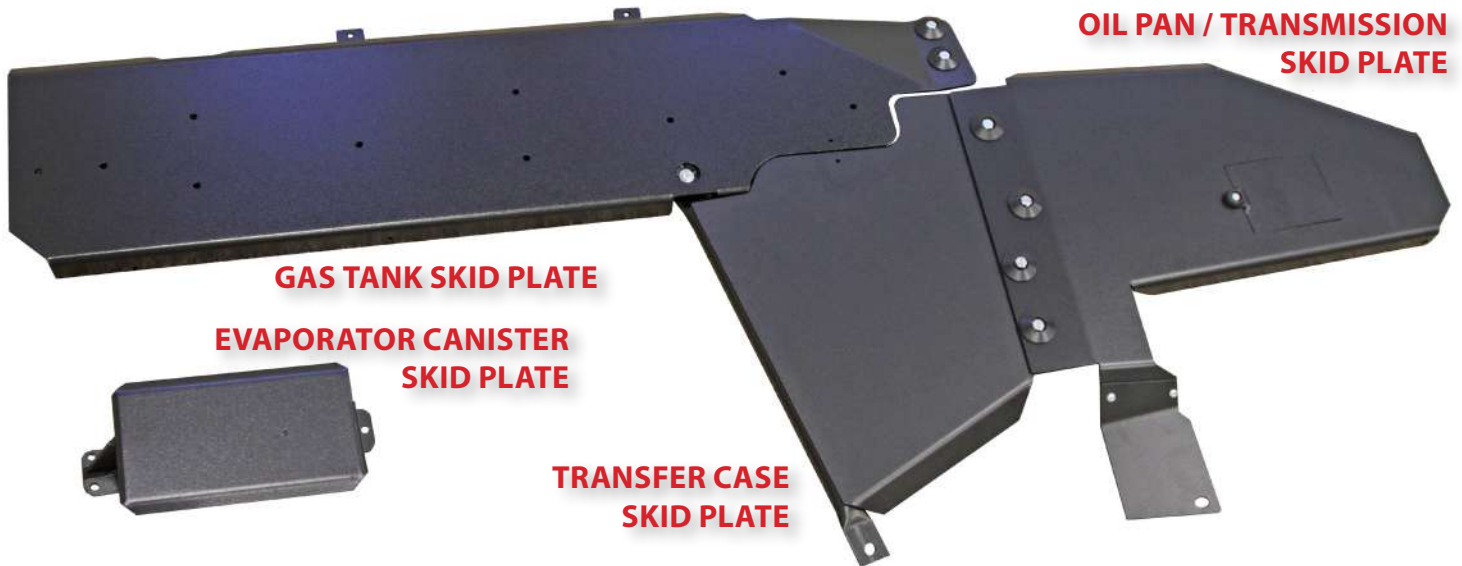


JK SKID PLATES

JEEP JK 2/4DR (2007 - 2018)

THE ORIGINAL, TRUSTED, AND MOST PROVEN SKID PLATE SYSTEM ON THE MARKET FOR THE JEEP WRANGLER JK!

- EXTREME DUTY PROTECTION
- LASER CUT + CNC BENT + JIG WELDED
- NO WELDING REQUIRED TO INSTALL
- POWDER COAT INCLUDED ON ALL SKIDS
- ALL HARDWARE INCLUDED
- SKID PLATES SOLD SEPARATELY
- EFFORTLESS OIL CHANGES
- WORKS WITH MOST SUSPENSION KITS



STEEL 3/16"

OIL PAN / TRANS SKID PLATE - 3/16" STEEL
2007 - 2018 JK 2/4DR SHORT ARM SUSPENSION

#RH-6003

2007 - 2018 JK 2/4DR LONG ARM SUSPENSION

#RH-6000-LA

TRANSFER CASE SKID PLATE - 3/16" STEEL

2007 - 2018 LONG ARM SUSPENSION

#RH-6004

GAS TANK SKID PLATE - 3/16" STEEL

2007 - 2018 4DR/UNLIMITED

#RH-6001

2007 - 2018 2DR

#RH-6002

EVAP CANISTER SKID PLATE - 3/16" STEEL

2007 - 2018 2/4DR

#RH-6005



EVAP CANISTER RELOCATION

RELOCATES CANISTER ABOVE REAR AXLE HOUSING

2007 - 2011 JK 2/4DR

#RH-6005-A

2012 - 2018 JK 2/4DR

#RH-6005-B

ALUMINUM 1/4"

OIL PAN / TRANS SKID PLATE - 1/4" ALUMINUM

2007 - 2018 JK 2/4DR SHORT ARM SUSPENSION

#RH-6043

2007 - 2018 JK 2/4DR LONG ARM SUSPENSION

#RH-6040

TRANSFER CASE SKID PLATE - 1/4" ALUMINUM

2007 - 2018 JK 2/4DR LONG ARM SUSPENSION

#RH-6044

GAS TANK SKID PLATE - 1/4" ALUMINUM

2007 - 2018 4DR/UNLIMITED

#RH-6041

2007 - 2018 2DR

#RH-6042

EVAP CANISTER SKID PLATE - 1/4" ALUMINUM

2007 - 2018 2/4DR UNLIMITED

#RH-6045



AEV HEMI SKID MOUNTS

2007 - 2018 JK 2/4DR

#RH-6003-HEMI

JK SKID PLATES / DIFF ARMOR

THE ORIGINAL, TRUSTED, AND MOST PROVEN SKID PLATE SYSTEM ON THE MARKET FOR THE JEEP WRANGLER JK!

RHX SERIES 1/4" STEEL



RHX SKIDS PAINTED SILVER

THE ROCK HARD 4X4 RHX SERIES 1/4" THICK STEEL SKID PLATES OFFER THE MOST PROTECTION YOU CAN BOLT-ON TO YOUR TRAIL RIG. WHILE HEFTY AT 1/4" THICKNESS, THIS INCREASED LEVEL OF PROTECTION IS WORTH EVERY ADDED POUND. NOT FOR THE FAINT OF HEART, THESE ARE A HEAVY SET OF SKIDS!

OIL PAN / TRANS SKID PLATE - 1/4" STEEL

2007 - 2018 JK 2/4DR SHORT ARM / FACTORY SUSPENSION

#RH-6083

2007 - 2018 JK 2/4DR LONG ARM SUSPENSION

#RH-6080

TRANSFER CASE SKID PLATE - 1/4" STEEL

2007 - 2018 LONG ARM SUSPENSION

#RH-6084

GAS TANK SKID PLATE - 1/4" STEEL

2007 - 2018 4DR/UNLIMITED

#RH-6081

2007 - 2018 2DR

#RH-6082

EVAPORATOR CANISTER SKID PLATE - 1/4" STEEL

2007 - 2018 2/4DR

#RH-6085

CROSSMEMBERS

DOUBLEWALL CROSSMEMBER UPGRADES

3/16" THICK STEEL DOUBLE WALL = 3/8" THICK
BLACK POWDER COAT FINISH
100% BOLT-ON INSTALLATION
AUTO / MANUAL TRANS COMPATIBLE

2007 - 2011 3.8L

#RH-9060

2012 - 2018 3.6L

#RH-9061



CONTROL ARM SKIDS

1/4" THICK STEEL
HEAVY DUTY HARDWARE
BLACK POWDER COAT
100% BOLT ON INSTALL

DANA 30/44 FRONT

#RH-9030

DANA 44 JK REAR

#RH-9031



DIFFERENTIAL GUARDS

HARD-HAT DIFFERENTIAL GUARDS

1/4" THICK STEEL
ZINC COATED HARDWARE
STAINLESS BACKING PLATE

DANA 30 RED

#RH-9050

DANA 44 RED

#RH-9051

DANA 30 BLACK

#RH-9052

DANA 44 BLACK

#RH-9053

DANA 30 BARE STEEL

#RH-9054

DANA 44 BARE STEEL

#RH-9055



TUBULAR ROCKER GUARDS

JEEP JK 2/4DR (2007 - 2018)

100% HEAVY DUTY - 100% BOLT ON INSTALL

- HEAVY DUTY ROCKER GUARD WITH SLIDE RAIL
- .120 WALL TUBING FOR MAXIMUM ABUSE
- 1-3/4" OUTER DIAMETER TUBE
- 2" X 3" RECTANGULAR RAIL
- LINES UP WITH TRIMMED PINCH SEAMS
- TAPERED ENDS FOR OVERSIZED TIRES
- FULLY COVERS PINCH SEAM
- FUNCTIONAL 3.5" STEP
- STRONG ENOUGH FOR HI-LIFT RECOVERY
- AVAILABLE IN 3 DESIGNS
- BOLT-ON DESIGN
- FULLY REPLACES FACTORY RAIL
- HARDWARE INCLUDED
- POWDER COAT INCLUDED



4DR/UNLIMITED 2007 - 2018 JK

ANGLED UP TUBULAR ROCK SLIDER

#RH-6009

ANGLED DOWN TUBULAR ROCK SLIDER

#RH-6011

FLAT STEP WITH LOGO PLATE

#RH-6013

2DR 2007 - 2018 JK

ANGLED UP TUBULAR ROCK SLIDER

#RH-6008

ANGLED DOWN TUBULAR ROCK SLIDER

#RH-6010

FLAT STEP WITH LOGO PLATE

#RH-6012



FITS TRIMMED WELLS SECURE MOUNTING



BOAT SIDE ROCK SLIDERS

JEEP JK 2/4DR (2007 - 2018)

FOR THE TOUGHEST TRAILS OUT THERE!

- EXTREME DUTY ROCKER GUARDS
- LASER CUT HI-LIFT JACK LIFT POINTS
- MOUNTS TO TUB AND BODY MOUNTS
- 3/16" SKID PROTECTS FRAME RAILS
- LINES UP WITH TRIMMED PINCH SEAMS
- TAPERED ENDS FOR OVERSIZED TIRES
- FULLY COVERS PINCH SEAM
- FUNCTIONAL 3.5" STEP
- STRONG ENOUGH FOR HI-LIFT RECOVERY
- AVAILABLE IN 2 TOP PLATE DESIGNS
- BOLT-ON DESIGN
- FULLY REPLACES FACTORY RAIL
- HARDWARE INCLUDED
- POWDER COAT INCLUDED



4DR/UNLIMITED 2007 - 2018 JK

SMOOTH TOP PLATE/STEP SURFACE

#RH-6006-S

DIAMOND PLATE TOP PLATE/STEP SURFACE

#RH-6006-T

2DR 2007 - 2018 JK

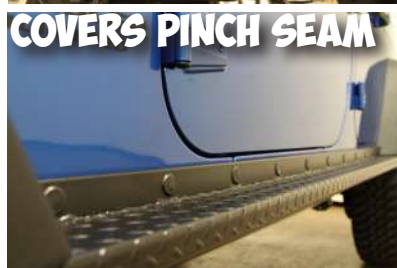
SMOOTH TOP PLATE/STEP SURFACE

#RH-6007-S

DIAMOND PLATE TOP PLATE/STEP SURFACE

#RH-6007-T

FITS TRIMMED WELLS **SECURE MOUNTING**



TJ/LJ SPORT CAGE

JEEP WRANGLER TJ/LJ UNLIMITED (1997 - 2006)

PREMIUM - PATENTED - PROVEN "THE ORIGINAL BOLT IN CAGE"
REQUIRES NO WELDING - PATENTED STEEL LOCKING COLLARS



TJ/LJ ULTIMATE SPORT CAGE

*SHIPS BARE STEEL - UNCOATED

MAIN SPORT CAGE

#RH-1001

OPTIONAL T-SECTION PADDING KIT

#RH-1001-TP

OPTIONAL MOLLE CARGO WRAP

#RH-1404

MAIN SPORT CAGE INCLUDES:

- OVERHEAD T-SECTION
- LEFT + RIGHT + UPRIGHTS
- LOWER WINDSHIELD BAR
- WELDED GRAB HANDLES
- GALVANIZED HARDWARE
- FACTORY HARD/SOFT TOP COMPATIBLE
- WORKS WITH FULL AND HALF DOORS.



OVERHEAD T-SECTION INCLUDES ACCESSORY MOUNTING PLATE FOR CB RADIO, FLASHLIGHT, ETC. CAN BE SPECIAL ORDERED WITHOUT



WORKS WITH ALL FACTORY CAGE SECTIONS PLUS SOUND BAR OR SOUND PODS. FACTORY HARD TOP AND SOFT TOP COMPATIBLE



WELDED GRAB HANDLES MAKE GETTING IN AND OUT OF YOUR JEEP A BREEZE. DASH SUPPORT WORKS WITH FULL/SOFT DOORS

SPORT CAGE UPGRADES

TJ/LJ WRANGLER (1997 - 2006) / PADDING KITS AVAILABLE



STRAIGHT ACROSS REAR BAR

*SHIPS BARE STEEL - UNCOATED

TJ/LJ (1997 - 2006)

#RH-1001-B

REAR BAR PADDING KIT

#RH-1001-RP



OVERHEAD ANGLE BARS (PAIR)

*SHIPS BARE STEEL - UNCOATED

TJ (1997 - 2002) SOUND BAR

#RH-1001-A

TJ/LJ (2003 - 2006) SOUND PODS

#RH-1001-F

ANGLE BAR PADDING KIT

#RH-1001-AP

*DESIGNED TO WORK WITH RH4X4 CAGE
NON-FRONT CAGE CAP KITS:

#RH-1001-G



5-WAY ACCESSORY MOUNT

FITS ALL 1-3/4" OD TUBING!

*SHIPS BARE STEEL - UNCOATED

#RH-1021



FRONT SEAT HARNESS BAR

*SHIPS BARE STEEL - UNCOATED

TJ/LJ (1997 - 2006)

#RH-1004



ANGLED HARNESS BAR

*SHIPS BARE STEEL - UNCOATED

TJ/LJ (1997 - 2006) DRIVER SIDE

#RH-1004-LT

TJ/LJ (1997 - 2006) PASS.

#RH-1001-RT



REAR SEAT HARNESS BAR

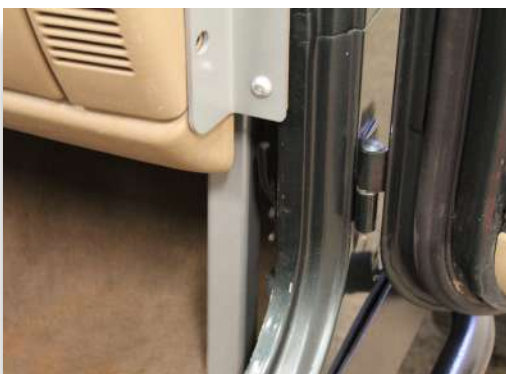
*SHIPS BARE STEEL - UNCOATED

TJ (1997 - 2006)

#RH-1001-J

LJ (2003 - 2006)

#RH-1001-U



FLOOR KIT

*SHIPS BARE STEEL - UNCOATED

TJ/LJ (1997 - 2006)

#RH-1001-D



FRAME KIT*

*SHIPS BARE STEEL - UNCOATED

TJ/LJ (1997 - 2006)

#RH-1001-E

*REQUIRES RH-1001-D



TJ / LJ LAP BELT MOUNT

1997 - 2006 TJ/LJ SOLD PER SEAT

#RH-1460

BOLT ON - NO DRILLING REQ'D



FRONT BUMPERS

CJ5 (1976 - 1983) - CJ7 (1976 - 1986) - CJ8 (1981 - 1986)

YJ WRANGLER (1987 - 1995) - TJ/LJ WRANGLER (1997 - 2006)

PATRIOT SERIES

- 1/4" THICK STEEL FOR MAX STRENGTH
- 1" THICK DOUBLE WELDED RECOVERY TABS
- WINCH GUARD TUBE WITH LIGHT TABS
- OPTIONAL STEERING BOX SKID PLATE
- WINCH PLATE BUILT IN
- FAIRLEAD MOUNT INCLUDED
- POWDER COAT INCLUDED
- HARDWARE INCLUDED

THESE BUMPERS ARE FLAT TOWABLE WITH ROCK HARD 4X4 TOW BAR BRACKETS
SEE PAGE 2 FOR MORE INFORMATION



Authorized Distributor
Contact us to add any
WARN Winch to your order.



HAWSE AND ROLLER FAIRLEAD LICENSE PLATE MOUNT
UNIVERSAL FITMENT
#RH-4004



EXTREME DUTY FRONT BUMPER

STEEL

#RH-4010

STEEL WITH 2" RECEIVER

#RH-4011

ALUMINUM 33 LBS!

#RH-4050



OPTIONAL STEERING BOX SKID PLATE

TJ/LJ, YJ

#RH-4002

JEEP CJ

#RH-4002-CJ

- FITS ALL RH4X4 TJ/LJ, YJ, CJ
- FRONT BUMPERS
- BOLT ON INSTALL



LEGENDARY SERIES

- 1/4" THICK STEEL & 2" X 4" BOX TUBING
- 1" THICK DOUBLE WELDED RECOVERY TABS
- WINCH GUARD TUBE WITH LIGHT TABS
- OPTIONAL STEERING BOX SKID PLATE
- WINCH PLATE BUILT IN
- FAIRLEAD MOUNT INCLUDED
- POWDER COAT INCLUDED
- HARDWARE INCLUDED



BEST SELLER!



SHORTER PROFILE!



EXTRA PROTECTION!

ANGLED FORWARD HOOP

- 46" WIDE
#RH-4001-C46
- 54" WIDE
#RH-4001-C54
- 60" WIDE
#RH-4001-C60

STRAIGHT UP HOOP

- 46" WIDE
#RH-4005-C46
 - 54" WIDE
#RH-4005-C54
 - 60" WIDE
#RH-4005-C60
- *Light tabs not included on straight up hoop

STRAIGHT HOOP W/ TUBEWORK

- 46" WIDE
#RH-4005-CX46
 - 54" WIDE
#RH-4005-CX54
 - 60" WIDE
#RH-4005-CX60
- *Light tabs not included on straight up hoop

FREEDOM SERIES

- 1/4" THICK STEEL
- 1" THICK DOUBLE WELDED RECOVERY TABS
- OPTIONAL STEERING BOX SKID PLATE
- WINCH PLATE BUILT IN
- FAIRLEAD MOUNT INCLUDED
- POWDER COAT INCLUDED
- HARDWARE INCLUDED
- FLAT TOWABLE (SOLD SEP.)



WINCH PLATE INCLUDED!

- NO HOOP**
- 46" WIDE
#RH-4001



RH-4014

FRONT BUMPER

- TJ/LJ, YJ, CJ 1976 - 2006
#RH-4014
- OPTIONAL SHORT HOOP
#RH-4015
- OPTIONAL STINGER HOOP (DRILLING)
#RH-4016



RH-4015



RH-4016



REAR BUMPERS + TIRE CARRIER

CJ5 (1976 - 1983) - CJ7 (1976 - 1986) - CJ8 (1981 - 1986)

YJ WRANGLER (1987 - 1995) - TJ/LJ WRANGLER (1997 - 2006)

- POWDER COAT INCLUDED
- HI-LIFT JACK MOUNT INCLUDED
- CB ANTENNA MOUNT INCLUDED
- 1" THICK RECOVERY TABS
- DUAL TAPERED BEARING HUB ASSEMBLY
- EASY GREASABLE ZERK FITTING
- ADJUSTABLE TIRE MOUNT
- 3-POINT PRELOAD FOR RATTLE FREE USE
- EXCLUSIVE TAILGATE BAR
- FITS UP TO 38" TIRE
- OPTIONAL CARGO BASKET
- OPTIONAL TANK MOUNTS
- WORKS WITH BODY LIFT
- INCLUDED 2" RECEIVER



REAR BUMPER MODELS

*FRAME BRACE KIT REQUIRED
SEE PAGE 34

WITH TIRE CARRIER

#RH-2001-C

BUMPER ONLY

#RH-2001-AC



ADJUSTABLE SPARE TIRE MOUNT - FITS UP TO 38"



BUMPER PROVIDES MAX BODY PROTECTION



1" THICK DOUBLE WELDED RECOVERY TABS INCLUDED

DROP DOWN SAFETY PIN PREVENTS CLOSURE



2 STAGE EASY TO OPEN LATCH AND STRIKER



2" RECEIVER BUILT INTO BUMPER FOR CLEARANCE



REQUIRED FRAME BRACE KITS

CJ5 (1976 - 1983) - CJ7 (1976 - 1986) - CJ8 (1981 - 1986)

YJ WRANGLER (1987 - 1995) - TJ/LJ WRANGLER (1997 - 2006)

ALL HARDWARE INCLUDED!



REAR BUMPER FRAME BRACE KIT REQUIRED FOR BUMPER INSTALL

JEEP CJ 1976 - 1986

#RH-2001-CJ

JEEP YJ 1987 - 1995
*SOME WELDING REQUIRED

#RH-2001-YJ

JEEP TJ/LJ 1997 - 2006

#RH-2001-TJ



ALLOWS FOR LARGER SPARES, TOWING,
AND RUNNING TANK MOUNT / ROCK RACK

REAR BUMPER UPGRADES

CJ5 (1976 - 1983) - CJ7 (1976 - 1986) - CJ8 (1981 - 1986)

YJ WRANGLER (1987 - 1995) - TJ/LJ WRANGLER (1997 - 2006)



TIRE CARRIER CARGO BASKET

#RH-2004

- SUPPORTS UP TO 100 LBS!
- 100% BOLT ON INSTALL
- ADJUSTABLE HEIGHT BASKET
- POWDER COAT INCLUDED
- FITS 2"X2" SQUARE TUBE 45° CARRIERS
- GAIN NEARLY 5 SQ. FT. OF CARGO SPACE!
- INSIDE DIMS: 5-1/4" X 18-1/4" X 38-1/2"

TIRE CARRIER TANK MOUNTS

LEFT DRIVER SIDE **#RH-2003-LT**

RIGHT PASS. SIDE **#RH-2003-RT**

- FITS NATO, ROTOPAX
- CB ANTENNA MOUNT INCLUDED
- 100% BOLT ON INSTALL
- ADJUSTABLE HEIGHT
- POWDER COAT INCLUDED
- ADJUSTABLE STRAPS INCLUDED



3RD BRAKE LIGHT

#RH-2002-TL

- FITS 2-1/2" CENTER HOLE
- INSTALLS IN MINUTES
- INCLUDES CONNECTORS



ROCK SLIDERS / GUARDS

CJ7 (1976 - 1986) - CJ8 (1981 - 1986)

YJ WRANGLER (1987 - 1995) - TJ/LJ WRANGLER (1997 - 2006)



- 3/16" THICK PLATE STEEL
- LASER CUT AND CNC BENT
- .120" WALL THICK TUBING
- TAPERED ENDS PREVENT TIRE RUB
- STRONG ENOUGH FOR HI-LIFT RECOVERY
- FUNCTIONAL 3.5" STEP
- POWDER COAT INCLUDED
- HARDWARE INCLUDED

UNPAINTED WITHOUT SIDE TUBING
POWDER COATED BLACK W/OUT SIDE TUBING
UNPAINTED WITH SIDE TUBING
POWDER COATED BLACK WITH SIDE TUBING

TJ (1997-2006)

#RH-3001
#RH-3001-C
#RH-3001-S
#RH-3001-SC

UNPAINTED WITHOUT SIDE TUBING
POWDER COATED BLACK W/OUT TUBING
UNPAINTED WITH SIDE TUBING
POWDER COATED BLACK WITH SIDE TUBING

LJ UNLIMITED (2003-2006)

#RH-3001-U
#RH-3001-UC
#RH-3001-US
#RH-3001-UCS

POWDER COATED WITH SIDE TUBING

YJ (1987-1995)

#RH-3003-YJ

POWDER COATED WITH SIDE TUBING

CJ7 (1976-1986)

#RH-3002-CJ

POWDER COATED WITH SIDE TUBING

CJ8 SCRAMBLER (1981-1986)

#RH-3005

FUEL TANK SKID PLATE

TJ/LJ WRANGLER (1997 - 2006)



SKID PLATE
#RH-3008

3/16" THICK STEEL AND LASER CUT + CNC BENT FOR PRECISE FITMENT. INCLUDES FUEL PUMP PROVISION. RIBS PROVIDE EXTRA STRENGTH. POWDER COAT INCLUDED.



CJ8 SPORT CAGE

JEEP CJ8 (1981 - 1986)

**PREMIUM - PATENTED - PROVEN "THE ORIGINAL BOLT IN CAGE"
PATENTED STEEL LOCKING COLLARS - HARNESS BARS AVAILABLE**

TWO VERSIONS AVAILABLE!



CJ8 "PICK UP CAB" SPORT CAGE

*SHIPS BARE STEEL - UNCOATED

MAIN SPORT CAGE
#RH-1005

MAIN SPORT CAGE INCLUDES:

- OVERHEAD T-SECTION
- LEFT + RIGHT + UPRIGHTS
- LOWER WINDSHIELD BAR
- WELDED GRAB HANDLES
- IN CAB HOOP (LEFT PICTURE)
- GALVANIZED HARDWARE

CJ8 "SOFT/HARD TOP" SPORT CAGE

*SHIPS BARE STEEL - UNCOATED

MAIN SPORT CAGE

CLAMPS TO OEM 3" HOOP - SLEEVE WELDING REQUIRED

#RH-1005-B

MAIN SPORT CAGE INCLUDES:

- OVERHEAD T-SECTION
- LEFT + RIGHT + UPRIGHTS
- LOWER WINDSHIELD BAR
- WELDED GRAB HANDLES
- CLAMPS TO FACTORY HOOP W/ SLEEVES
- GALVANIZED HARDWARE



CJ8 REAR ULTIMATE SPORT CAGE

*SHIPS BARE STEEL - UNCOATED

REAR SPORT CAGE "PICK UP CAB"
2" .120 WALL STEEL TUBING

#RH-1005-A



REAR CAGE SECTION!



CJ8 HARNESS BARS

*SHIPS BARE STEEL - UNCOATED

FRONT SEAT HARNESS BAR

#RH-1005-C (FOR RH-1005-B)

REAR SEAT HARNESS BAR

#RH-1005-D (#RH-1005-A REQ.)

FRONT SEAT HARNESS BAR

#RH-1005-E (FOR #RH-1005)



FLOOR KIT

*SHIPS BARE STEEL - UNCOATED

JEEP CJ8 1981 - 1986

#RH-1003-F



FRAME KIT*

*SHIPS BARE STEEL - UNCOATED

JEEP CJ8 1981 - 1986

#RH-1003-G

*REQUIRES RH-1003-F



YJ SPORT CAGE

JEEP WRANGLER YJ (1987 - 1995)

PREMIUM - PATENTED - PROVEN "THE ORIGINAL BOLT IN CAGE"
REQUIRES NO WELDING - PATENTED STEEL LOCKING COLLARS



YJ ULTIMATE SPORT CAGE

*SHIPS BARE STEEL - UNCOATED

MAIN SPORT CAGE

#RH-1002

FRONT T-SECTION PADDING KIT

#RH-1002-TP

MOLLE T-SECTION CAGE WRAP

#RH-1405

MAIN SPORT CAGE INCLUDES:

- OVERHEAD T-SECTION
- LEFT + RIGHT + UPRIGHTS
- LOWER WINDSHIELD BAR
- WELDED GRAB HANDLES
- GALVANIZED HARDWARE
- FACTORY HARD/SOFT TOP COMPATIBLE
- WORKS WITH FULL AND HALF DOORS



YJ SPORT CAGE UPGRADES

YJ WRANGLER (1981 - 1986) / PADDING KITS AVAILABLE



STRAIGHT ACROSS REAR BAR

*SHIPS BARE STEEL - UNCOATED

YJ (1992 - 1995)

#RH-1002-B

YJ (1987 - 1991)*REQUIRES RH-1002-C

#RH-1002-D

REAR BAR PADDING KIT

#RH-1002-RP



OVERHEAD ANGLE BARS (PAIR)

*SHIPS BARE STEEL - UNCOATED

YJ (1992 - 1995)

#RH-1002-A

ANGLE BAR PADDING KIT (87-95)

#RH-1002-AP



FRONT SEAT HARNESS BAR

*SHIPS BARE STEEL - UNCOATED

YJ (1987 - 1995)

#RH-1004-A



ANGLED HARNESS BAR

*SHIPS BARE STEEL - UNCOATED

YJ (1987 - 1995) DRIVER SIDE

#RH-1004-LT

YJ (1987 - 1995) PASS. SIDE

#RH-1004-RT



REAR SIDE + OVERHEAD ANGLE BARS (PAIR)

*SHIPS BARE STEEL - UNCOATED

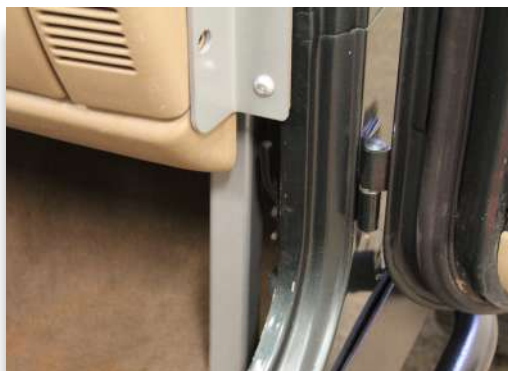
YJ (1992 - 1995)

#RH-1002-C

*DESIGNED TO WORK WITH RH4X4 CAGE

NON-FRONT CAGE CAP KITS:

87-91 **#RH-1001-G**



FLOOR KIT

*SHIPS BARE STEEL - UNCOATED

YJ (1987 - 1995)

#RH-1002-F



FRAME KIT*

*SHIPS BARE STEEL - UNCOATED

YJ (1987 - 1995)

#RH-1002-G

*REQUIRES **#RH-1002-F**



REAR SEAT HARNESS BAR

*SHIPS BARE STEEL - UNCOATED

YJ (1992 - 1996)

#RH-1002-H

YJ (1986 - 1991)*REQS RH-1002-

#RH-1004-YJ



CJ7 SPORT CAGE

JEEP CJ7 (1976 - 1986)

**PREMIUM - PATENTED - PROVEN "THE ORIGINAL BOLT IN CAGE"
REQUIRES NO WELDING - PATENTED STEEL LOCKING COLLARS**



CJ7 ULTIMATE SPORT CAGE

*SHIPS BARE STEEL - UNCOATED

1976 - 1978 MAIN SPORT CAGE

#RH-1007

*2" OD BAR MOUNTS TO INCLUDED ANGLE IRON PLATES THROUGH SIDE OF TUB OVER REAR WHEEL WELL

1979 - 1986 MAIN SPORT CAGE

#RH-1003

*MOUNTS 2-1/4" CAGE TO FLOOR BEHIND SEATS AND WHEEL WELL

OPTIONAL T-SECTION PADDING KIT

#RH-1003-TP

MAIN SPORT CAGE INCLUDES:

- OVERHEAD T-SECTION
- LEFT + RIGHT + UPRIGHTS
- LOWER WINDSHIELD BAR
- WELDED GRAB HANDLES
- GALVANIZED HARDWARE



CAGE TUBING IS 1-3/4" THICK .120 WALL STEEL. WINDSHIELD BAR GIVES ADDED STRENGTH TO INCLUDED DRIVER + PASS. SIDE UPRIGHT BARS. THIS HELPS STIFFEN YOUR CABIN PLUS GIVES YOUR CAGE INCREDIBLE STRENGTH.



DASH BAR ATTACHES TO WINDSHIELD FRAME AND IS DESIGNED TO BE COMPATIBLE WITH FACTORY SPEAKERS. HARDWARE INCLUDED.



ALL CONNECTIONS TO FACTORY CAGE BARS USE OUR PATENTED 1/2" THICK STEEL COLLARS.



SHOWN WITH FRONT MAIN CAGE, REAR SIDE AND OVERHEAD ANGLE BARS, PLUS STRAIGHT ACROSS THE REAR BAR. THE ULTIMATE PROTECTION - THE ULTIMATE BOLT-IN SPORT CAGE!



CJ7 SPORT CAGE UPGRADES

JEEP CJ7 (1976 - 1986) / PADDING KITS AVAILABLE



STRAIGHT ACROSS REAR BAR

*SHIPS BARE STEEL - UNCOATED

1976 - 1978

#RH-1007-B 1979 - 1986

#RH-1003-B

STRAIGHT ACROSS REAR BAR PADDING KIT

#RH-1003-RP



REAR SIDE AND OVERHEAD ANGLE BARS*

*SHIPS BARE STEEL - UNCOATED

1976 - 1978

#RH-1007-A

1979 - 1986

*DESIGNED TO WORK WITH RH4X4 CAGE
NON-FRONT CAGE CAP KITS:
(76-78) #RH-1007-D
(79-86) #RH-1003-I

#RH-1003-A

OVERHEAD ANGLE BAR PADDING

KIT

#RH-1003-AP



FRONT SEAT HARNESS BAR

*SHIPS BARE STEEL - UNCOATED

1976 - 1978

#RH-1004-C

1979 - 1986

#RH-1004-A



ANGLED HARNESS BAR

*SHIPS BARE STEEL - UNCOATED

1976 - 1978 DRIVER SIDE

#RH-1009-LT

1976 - 1978 PASS. SIDE

#RH-1009-RT

1979 - 1986 DRIVER SIDE

#RH-1004-LT

1979 - 1986 PASS. SIDE

#RH-1004-RT



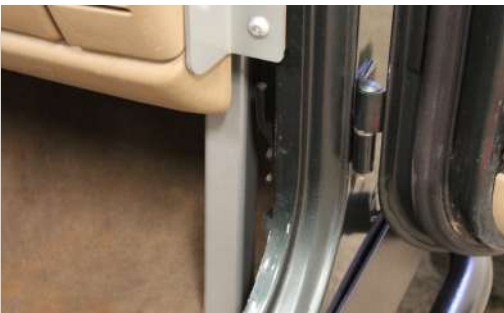
REAR SEAT HARNESS BAR

*SHIPS BARE STEEL - UNCOATED

1979 - 1986

#RH-1004-E 1976 - 1978

#RH-1007-E



FLOOR KIT

*SHIPS BARE STEEL - UNCOATED

1976 - 1986

#RH-1003-F



FRAME KIT*

*SHIPS BARE STEEL - UNCOATED

1976 - 1986 *REQUIRES #RH-1003-F

#RH-1003-G



ALUMINUM GRAB HANDLE

*SHIPS BARE ALUMINUM - UNCOATED

FITS ALL 1-3/4" OD TUBING!

6" #RH-1020-S

12" #RH-1020-L



CJ5 SPORT CAGE

JEEP CJ5 (1955 - 1984)

**PREMIUM - PATENTED - PROVEN "THE ORIGINAL BOLT IN CAGE"
REQUIRES NO WELDING - PATENTED STEEL LOCKING COLLARS**



CJ5 ULTIMATE SPORT CAGE

*SHIPS BARE STEEL - UNCOATED

1955 - 1975 MAIN SPORT CAGE

#RH-1010-A

*REQUIRES #RH-1010

*FOR 2" CAGE

1976 - 1978 MAIN SPORT CAGE

#RH-1006

*FOR 2" CAGE

1979 - 1983 MAIN SPORT CAGE

#RH-1008

*FOR 2-1/4" CAGE

FRONT T-SECTION PADDING KIT

#RH-1003-TP

MAIN SPORT CAGE INCLUDES:

- OVERHEAD T-SECTION
- LEFT + RIGHT + UPRIGHTS
- LOWER WINDSHIELD BAR
- WELDED GRAB HANDLES
- GALVANIZED HARDWARE

CJ5 REPLACEMENT FACTORY

HOOP + SUPPORTS

*SHIPS BARE STEEL - UNCOATED

REPLACEMENT FACTORY HOOP UP TO 1978

#RH-1010

*MAY BE REQUIRED ON #RH-1010-A

CALL FOR DETAILS

REPLACEMENT HOOP INCLUDES:

- SINGLE PIECE HOOP
- LEFT + RIGHT UPRIGHTS
- REAR MOUNTING PLATES
- GALVANIZED HARDWARE



CJ5 SPORT CAGE UPGRADES

JEEP CJ5 (1955 - 1983) / PADDING KITS AVAILABLE



REAR SIDE BARS (PAIR) + STRAIGHT ACROSS REAR BAR

*SHIPS BARE STEEL - UNCOATED

1979 - 1983

#RH-1008-A 1955 - 1978

#RH-1006-A

STRAIGHT REAR BAR PADDING

KIT

#RH-1003-RP



FRONT SEAT HARNESS BAR

*SHIPS BARE STEEL - UNCOATED

1955 - 1975

#RH-1010-B

1976 - 1978

#RH-1004-C

1979 - 1983

#RH-1004-B



NON-SLIP GRAB HANDLE

HOOK AND LOOP

FASTENER - UNIVERSAL

#RH-1025

SOLD INDIVIDUALLY



FLOOR KIT

*SHIPS BARE STEEL - UNCOATED

1976 - 1983

#RH-1003-F



ANGLED HARNESS BAR

*SHIPS BARE STEEL - UNCOATED

1976 - 1978 DRIVER SIDE

#RH-1009-LT

1976 - 1978 PASS. SIDE

#RH-1009-RT

1979 - 1983 DRIVER SIDE

#RH-1004-LT

1979 - 1983 PASS. SIDE

#RH-1004-RT



ALUMINUM GRAB HANDLE

*SHIPS BARE ALUMINUM - UNCOATED

FITS ALL 1-3/4" OD TUBING!

6" #RH-1020-S

12" #RH-1020-L



FRAME KIT*

*SHIPS BARE STEEL - UNCOATED

1976 - 1984 *REQUIRES RH-1003-F

#RH-1003-G



5-WAY ACCESSORY MOUNT

*SHIPS BARE ALUMINUM - UNCOATED

FITS ALL 1-3/4" OD TUBING!

#RH-1021



XJ SPORT CAGE

JEEP CHEROKEE XJ 2/4DR (1984 - 2001)



CHEROKEE SPORT CAGE MODELS

*SHIPS BARE STEEL - UNCOATED

1984 - 1996 4 DOOR

#RH-1012 1984 - 1996

2 DOOR

#RH-1012-2 1997 - 2001

4 DOOR

#RH-1012-1 1997 - 2001

2 DOOR

#RH-1012-3 1986 - 1992

COMANCHE TRUCK

#RH-1012-5

MAIN SPORT CAGE INCLUDES:

- 2 MAIN HOOPS
- WINDSHIELD SIDE BARS
- ACROSS DASH BAR
- OUTER CONNECTING BARS
- 45 DEGREE FORWARD BARS
- UNDERCARRIAGE MOUNTS
- 1-3/4" X .120" WALL STEEL TUBING
- NO WELDING REQUIRED
- FLOOR DRILLING REQUIRED
- CONTACT US IF CARPET REMOVED



XJ SPORT CAGE UPGRADES

JEEP CHEROKEE XJ 2/4DR (1984 - 2001)



XJ FRONT OVERHEAD CENTER BAR

*SHIPS BARE STEEL - UNCOATED

1997 - 2001 4 DOOR

#RH-1012-G.

1997 - 2001 2 DOOR

#RH-1012-I

1984 - 1996 4 DOOR

#RH-1012-A

1984 - 1996 2 DOOR

#RH-1012-2FC



XJ FRONT OVERHEAD CENTER BAR

*SHIPS BARE STEEL - UNCOATED

1997 - 2001 4 DOOR

#RH-1012-H

1984 - 1996 4 DOOR

#RH-1012-B

1984 - 1996 2 DOOR

#RH-1012-2RC



XJ FRONT SEAT HARNES BAR

*SHIPS BARE STEEL - UNCOATED

1984 - 2001 2/4 DOOR

#RH-1012-C



XJ REAR BENCH HARNES BAR

*SHIPS BARE STEEL - UNCOATED

1984 - 2001 2/4 DOOR

#RH-1012-D



XJ FRONT BUMPER

JEEP CHEROKEE XJ 2/4DR 1984 - 2001

JEEP COMANCHE (1986 - 1992)



CHEROKEE + COMANCHE FRONT BUMPER

#RH-1015

*1984 - 1995 REQUIRES TRIMMING
*SHOWN WITH OPTIONAL PARTS
SOLD SEPARATELY

- 3/16" X 2" X 5" THICK STEEL
- 1/4" THICK STEEL SIDE PLATES
- 1" THICK RECOVERY TABS
- LASER CUT + CNC BENT
- POWDER COAT INCLUDED
- ALL HARDWARE INCLUDED



TAPERED 1/4" THICK STEEL
SIDE PLATES FOLLOW WHEEL
WELL CURVE FOR HIGH
CLEARANCE AND CLEAN
LOOK



TIGHTLY HUGS FRONT
GRILLE FOR MAXIMUM
APPROACH ANGLE

EXCLUSIVE MOUNTING METHOD
FOR EXTREME DUTY WINCHING

LOW PROFILE BUMPER FOLLOWS
NATURAL XJ BODY LINES

INTEGRATED LOWER VALENCE
BUILT FROM 3/16" THICK STEEL



XJ BUMPER UPGRADES

JEEP CHEROKEE XJ 2/4DR (1984 - 2001)



BOLT ON FRONT BUMPER WINCH PLATE

ROCK HARD 4X4 FRONT BUMPER REQUIRED

1984 - 2001 JEEP XJ

#RH-1015-A

BOLT ON FRONT BUMPER GRILLE GUARD

ROCK HARD 4X4 FRONT BUMPER REQUIRED

1984 - 2001 JEEP XJ

#RH-1015-BG



Authorized Distributor
Contact us to add any
WARN Winch to your order.



XJ SLIDERS

JEEP CHEROKEE XJ 2/4DR 1984 - 2001



ROCK SLIDERS / ROCKER GUARDS

CHEROKEE 2/4DR 1984 - 2001

#RH-1014

- 2" X 3" STEEL TUBING MOUNTS TO UNIBODY
- POWDER COAT INCLUDED
- SOME DRILLING REQUIRED
- BOXED AND TAPERED ENDS FOR OVERSIZED TIRES



XJ REAR BUMPER

JEEP CHEROKEE XJ 2/4DR (1984 - 2001)

- 3/16" X 2" 4" STEEL BUMPER
- 1/4" THICK STEEL SIDE PLATES
- POWDER COAT INCLUDED
- CB / HI-LIFT JACK MOUNT INCLUDED
- 1" THICK RECOVERY TABS
- DUAL TAPERED BEARING HUB ASSEMBLY
- EASY GREASABLE ZERK FITTING
- ADJUSTBLE TIRE MOUNT
- FITS UP TO 38" TIRE
- OPTIONAL CARGO BASKET
- OPTIONAL TANK MOUNT
- INCLUDED 2" RECEIVER



RH-1013-B SHOWN WITH NOTCH FLARES

REAR BUMPER MODELS

BUMPER + TIRE CARRIER FOR JEEP FLARES
#RH-1013

BUMPER ONLY FOR JEEP FLARES
#RH-1013-A

BUMPER + TIRE CARRIER FOR
BUSHWACKER POCKET/NOTCH FLARES
#RH-1013-B

BUMPER ONLY FOR
BUSHWACKER POCKET/NOTCH FLARES
#RH-1013-C

BUMPER + TIRE CARRIER FOR
BUSHWACKER FLAT FLARES
#RH-1013-D

BUMPER ONLY FOR
BUSHWACKER FLAT FLARES
#RH-1013-E



2" TOW RATED RECEIVER
+ SAFETY CHAIN HOOKS

DROP DOWN SAFETY PIN
PREVENTS CLOSURE



ADJUSTABLE SPARE TIRE
MOUNT FITS UP TO 38"

HEAVY DUTY DOUBLE
BEARING HUB SYSTEM



2 STAGE RATTLE FREE
LATCH MECHANISM

1" THICK STEEL DOUBLE
WELDED RECOVERY TABS



INTEGRATED HI-LIFT JACK
AND CB ANTENNA MOUNTS

PROTECTS REAR CORNER
FROM TRAIL DAMAGE



XJ REAR BUMPER UPGRADES

JEEP CHEROKEE XJ 2/4DR (1984 - 2001)



TIRE CARRIER CARGO BASKET

#RH-2004

- SUPPORTS UP TO 100 LBS!
- 100% BOLT ON INSTALL
- ADJUSTABLE HEIGHT BASKET
- POWDER COAT INCLUDED
- FITS 2"X2" SQUARE TUBE 45° CARRIERS
- GAIN NEARLY 5 SQ. FT. OF CARGO SPACE!
- INSIDE DIMS: 5-1/4" X 18-1/4" X 38-1/2"

TIRE CARRIER TANK MOUNTS

LEFT DRIVER SIDE

#RH-2003-LT

- FITS NATO, ROTOPAX
 - 100% BOLT ON INSTALL
 - ADJUSTABLE HEIGHT
 - POWDER COAT INCLUDED
 - ADJUSTABLE STRAPS INCLUDED
 - CB ANTENNA TAB INCLUDED
- *PASS SIDE NOT XJ COMPATIBLE



LICENSE PLATE MOUNT

LED PLATE AND 3RD BRAKE LIGHT WITH RELOCATION KIT

#RH-4006

LICENSE PLATE MOUNT ONLY

#RH-4007

XJ FUEL TANK SKID PLATE

JEEP CHEROKEE XJ 2/4DR (1984 - 2001)



CHEROKEE FUEL TANK SKID

1984 - 2001 JEEP XJ

#RH-3009

- HEAVY DUTY 3/16" STEEL
- LASER CUT
- CNC BENT FOR PRECISE FITMENT
- POWDER COAT INCLUDED
- A MUST HAVE!



ZJ SPORT CAGE

JEEP GRAND CHEROKEE ZJ (1993 - 1998)

**PREMIUM - PATENTED - PROVEN "THE ORIGINAL BOLT IN CAGE"
REQUIRES NO WELDING - PATENTED STEEL LOCKING COLLARS**

PROTECTS FROM WINDSHIELD TO CARGO AREA AND IS CONSTRUCTED FROM 1-3/4" X .120" STEEL TUBING. NO WELDING REQUIRED. POWDER COAT NOT INCLUDED. SOME FLOOR DRILLING REQUIRED. IF CARPET REMOVED PLEASE CALL PRIOR TO ORDERING.



GRAND CHEROKEE SPORT CAGE ZJ

*SHIPS BARE STEEL - UNCOATED

1993 - 1998

#RH-1031

MAIN SPORT CAGE INCLUDES:

- 2 MAIN HOOPS
- WINDSHIELD SIDE BARS
- ACROSS DASH BAR
- OUTER CONNECTING BARS
- 45 DEGREE FORWARD BARS
- FLOOR MOUNTS
- UNDERCARRIAGE MOUNTS
- ALL HARDWARE



ZJ FRONT SEAT HARNESS BAR

*SHIPS BARE STEEL - UNCOATED

1993 - 1998

#RH-1031-A

ZJ REAR SEAT HARNESS BAR

*SHIPS BARE STEEL - UNCOATED

1993 - 1998

#RH-1031-B



WJ SPORT CAGE

JEEP GRAND CHEROKEE WJ (1999 - 2004)

**PREMIUM - PATENTED - PROVEN "THE ORIGINAL BOLT IN CAGE"
REQUIRES NO WELDING - PATENTED STEEL LOCKING COLLARS**

PROTECTS FROM WINDSHIELD TO CARGO AREA AND IS CONSTRUCTED FROM 1-3/4" X .120" STEEL TUBING. NO WELDING REQUIRED. POWDER COAT NOT INCLUDED. SOME FLOOR DRILLING REQUIRED. IF CARPET REMOVED PLEASE CALL PRIOR TO ORDERING.

GRAND CHEROKEE SPORT CAGE WJ

*SHIPS BARE STEEL - UNCOATED

1999 - 2004

#RH-1033

MAIN SPORT CAGE INCLUDES:

- 2 MAIN HOOPS
- WINDSHIELD SIDE BARS
- ACROSS DASH BAR
- OUTER CONNECTING BARS
- 45 DEGREE FORWARD BARS
- FLOOR MOUNTS
- UNDERCARRIAGE MOUNTS
- ALL HARDWARE



WJ FRONT SEAT HARNESS BAR

*SHIPS BARE STEEL - UNCOATED

1999 - 2004

#RH-1033-A

WJ REAR SEAT HARNESS BAR

*SHIPS BARE STEEL - UNCOATED

1999 - 2004

#RH-1033-B



ZJ + WJ FRONT BUMPER

JEEP GRAND CHEROKEE ZJ (1993 - 1998)

JEEP GRAND CHEROKEE WJ (1999 - 2004)



1/4" THICK STEEL PLATE CONSTRUCTION
LASER CUT AND CNC BENT FOR PRECISE FIT
1" THICK RECOVERY TABS INCLUDED
ALL HARDWARE INCLUDED
POWDER COAT INCLUDED
HIGH CLEARANCE - EXTREME DUTY!



GRAND CHEROKEE FRONT BUMPER MODELS

1993 - 1998 JEEP ZJ
#RH-7002

1999 - 2004 JEEP WJ
#RH-7052

*FITMENT NOTE: HEADLIGHT AND GRILLE COMBO MUST MATCH EXAMPLE ABOVE



ZJ + WJ BUMPER UPGRADES

ROCK HARD 4X4 FRONT BUMPER REQUIRED



FITS MOST POPULAR WINCHES



1-1/4" STEEL TUBING

BOLT ON FRONT BUMPER WINCH PLATE

ROCK HARD 4X4 FRONT BUMPER REQUIRED

1993 - 1998 JEEP ZJ
1999 - 2004 JEEP WJ
#RH-1015-A

BOLT ON FRONT BUMPER GRILLE GUARD

ROCK HARD 4X4 FRONT BUMPER REQUIRED

1993 - 1998 JEEP ZJ
#RH-7002-B



Authorized Distributor
Contact us to add any
WARN Winch to your order.

ZJ + WJ ROCK SLIDERS



GRAND CHEROKEE ROCK SLIDERS

1993 - 1998 JEEP ZJ
#RH-7003

1999 - 2004 JEEP WJ
#RH-7053

HEAVY DUTY 2" X 3" STEEL TUBING
POWDER COAT INCLUDED
DRILLING REQUIRED



ZJ FUEL TANK SKID



GRAND CHEROKEE FUEL TANK SKID

1993 - 1998 JEEP ZJ
#RH-3010

HEAVY DUTY 3/16" STEEL
LASER CUT + CNC BENT FOR PRECISE FITMENT
POWDER COAT INCLUDED

ZJ + WJ BUMPER TIRE CARRIER

JEEP GRAND CHEROKEE ZJ (1993 - 1998)

JEEP GRAND CHEROKEE WJ (1999 - 2004)

- 3/16" X 2" 4" STEEL BUMPER
- 1/4" THICK STEEL SIDE PLATES
- POWDER COAT INCLUDED
- CB / HI-LIFT JACK MOUNT INCLUDED
- 1" THICK RECOVERY TABS
- DUAL TAPERED BEARING HUB ASSEMBLY
- EASY GREASABLE ZERK FITTING
- ADJUSTBLE TIRE MOUNT
- FITS UP TO 38" TIRE
- OPTIONAL CARGO BASKET
- OPTIONAL TANK MOUNT
- INCLUDED 2" RECEIVER



GRAND CHEROKEE REAR BUMPER WITH TIRE CARRIER

1993 - 1998 JEEP ZJ

#RH-7000

1999 - 2004 JEEP WJ

#RH-7050

GRAND CHEROKEE REAR BUMPER NON-TIRE CARRIER

1993 - 1998 JEEP ZJ

#RH-7001

1999 - 2004 JEEP WJ

#RH-7051



INTEGRATED TOW RATED RECEIVER WITH SAFETY CHAIN HOOKS

DROP DOWN SAFETY PIN PREVENTS TIRE CARRIER FROM CLOSING ON YOU

HIGH CLEARANCE EXTREME DUTY 1/4" THICK CORNERS KEEP YOUR BODY SAFE

FULLY ADJUSTABLE TIRE CARRIER FITS UP TO 38" SPARE HI LIFT JACK MOUNT + CB ANTENNA TAB INCLUDED



REAR BUMPER UPGRADES

JEEP GRAND CHEROKEE ZJ (1993 - 1998)

JEEP GRAND CHEROKEE WJ (1999 - 2004)



TIRE CARRIER ROCK RACK CARGO BASKET

#RH-2004

- SUPPORTS UP TO 100 LBS!
- 100% BOLT ON INSTALL
- ADJUSTABLE HEIGHT BASKET
- POWDER COAT INCLUDED
- FITS 2"X2" SQUARE TUBE 45° CARRIERS
- GAIN NEARLY 5 SQ. FT. OF CARGO SPACE!
- INSIDE DIMS: 5-1/4" X 18-1/4" X 38-1/2"



TIRE CARRIER TANK MOUNTS

LEFT DRIVER SIDE #RH-2003-LT

RIGHT PASSENGER SIDE #RH-2003-RT

- FITS NATO, ROTOPAX AND CO2 TANKS
- CB ANTENNA MOUNT TABS INCLUDED
- 100% BOLT ON INSTALL
- ADJUSTABLE HEIGHT
- POWDER COAT INCLUDED
- SECURE ADJUSTABLE STRAPS INCLUDED



3RD BRAKE LIGHT

#RH-2002-TL

- FITS 2-1/2" BORE HOLES
- MOUNTS TO TIRE CARRIER
- SOME WIRING REQUIRED
- CONNECTORS INCLUDED



LICENSE PLATE MOUNT

LED PLATE AND 3RD BRAKE LIGHT WITH RELOCATION KIT

#RH-4006

LICENSE PLATE MOUNT ONLY

#RH-4007



FABRICATION COLLARS

PATENTED DESIGN

Protected by Patent US6908107 and used in all our cage systems, our locking collars are the foundation for our Ultimate Sports Cage upgrade. Magazine editors, trail guides, wheelers from across the world, and even competitors have turned to our bolt-in cage for their own vehicles. The strength our collars provide is inherent in how they couple our cage components together.



PATENTED LOCKING COLLAR - FABRICATION READY:

*SHIPS BARE STEEL - UNCOATED

EACH FABRICATION COLLAR COMES WITH MATCHING CAP AND HARDWARE.

INSIDE

DIAMETER	PART #
1.50"	#RH-1150
1.75"	#RH-1175
2"	#RH-1200
2.25"	#RH-1225
3"	#RH-1300

AR-500 SHOOTING TARGETS

SHOOTING TARGETS

5" PADS - HIGH CALIBER

.223 TO .308

#RH-AR-500-L

3.5" PADS - MEDIUM CALIBER

9MM TO .308

#RH-AR-500-M

2.5" PADS - SMALL CALIBER

.22 TO 9MM

#RH-AR-500-S

Rock Hard 4x4 isn't just Jeep upgrade parts, it's also lifestyle! Our AR-500 steel targets, like all RH4x4 products, are 100% Made in USA and made in house. Our Flippin' Targets are designed to always land up and ready to take the next round. Three sizes are available for all calibers and skill levels.



FORD BRONCO 1966 - 1977

ARMOR UPGRADES AND ACCESSORIES!

FREEDOM SERIES FRONT WINCH BUMPER

FRONT BUMPER

#RH-6200

- 1/4" THICK / LASER CUT / CNC BENT
- 1" THICK RECOVERY TABS INCLUDED
- PREDRILLED WINCH PLATE
- FAIRLEAD MOUNT INCLUDED
- FLAT TOWABLE (SOLD SEPARATE)

SHORTY WINCH GUARD HOOP

#RH-6201

- ZERO DRILLING REQUIRED
- INCLUDES 2X LIGHT MOUNTING TABS
- FIT ALL POPULAR 10" LED LIGHT BARS
- POWDER COATED BLACK

STINGER BUMPER HOOP

#RH-6202

DRILLING REQUIRED

PATRIOT SERIES REAR BUMPER

BUMPER WITH TIRE CARRIER

#RH-6101

- POWDER COAT INCLUDED
- FITS UP TO 38" SPARE TIRE
- INTEGRATED 2" RECEIVER
- HEAVY DUTY BEARINGS
- ADJUSTABLE SPARE MOUNT
- ALL HARDWARE INCLUDED
- LASER CUT AND CNC BENT
- HIGH CLEARANCE DESIGN
- HI LIFT JACK MOUNT
- CB ANTENNA TAB INCLUDED

BUMPER ONLY

#RH-6100



Check out the collection of running boards and step bars we offer.