



SPRING 2021

PLAY HARD - CRAWL HARD - ROCK HARD

SPORT CAGES - BUMPERS - SKID PLATES - SLIDERS - AND MORE!

2020 - CURRENT JEEP GLADIATOR JT

1987 - CURRENT JEEP WRANGLER JL/JK/LJ/TJ/YJ

1955 - 1986 JEEP CJ8/CJ7/CJ5

1984 - 2001 JEEP CHEROKEE XJ

1993 - 2004 JEEP GRAND CHEROKEE WJ/ZJ

1966 - 1977 2021 - CURRENT FORD BRONCO

TABLE OF CONTENTS

JT JEEP GLADIATOR (2020 - CURRENT)

SPORT CAGES17
FRONT BUMPERS7
REAR BUMPERS13
SKID PLATES15
SLIDERS14

JL JEEP WRANGLER (2018 - CURRENT)

SPORT CAGES17
FRONT BUMPERS7
REAR BUMPERS11
SKID PLATES15
SLIDERS14

JK JEEP WRANGLER (2007 - 2018)

SPORT CAGES19
FRONT BUMPERS21
REAR BUMPERS26
SKID PLATES29
SLIDERS31

LJ UNLIMITED JEEP WRANGLER (2003 - 2006)

SPORT CAGES33
FRONT BUMPERS35
REAR BUMPERS37
SLIDERS - SKID PLATES39

TJ JEEP WRANGLER (1997 - 2006)

SPORT CAGES33
FRONT BUMPERS35
REAR BUMPERS37
SLIDERS - SKID PLATES39

YJ JEEP WRANGLER (1987 - 1995)

SPORT CAGES41
FRONT BUMPERS35
REAR BUMPERS37
SLIDERS - SKID PLATES39

CJ8 JEEP SCRAMBLER (1981 - 1986)

SPORT CAGES40
FRONT BUMPERS35
REAR BUMPERS37
SLIDERS - SKID PLATES39

CJ7 JEEP (1976 - 1986)

SPORT CAGES43
FRONT BUMPERS35
REAR BUMPERS37
SLIDERS - SKID PLATES39

CJ5 JEEP (1955 - 1983)

SPORT CAGES45
FRONT BUMPERS35
REAR BUMPERS37

XJ JEEP CHEROKEE (1984 - 2001)

SPORT CAGES47
FRONT BUMPER49
REAR BUMPERS51
SLIDERS50
SKID PLATES52

ZJ JEEP GRAND CHEROKEE (1993 - 1998)

SPORT CAGES57
FRONT BUMPER53
REAR BUMPERS55
SLIDERS - SKID PLATES54

WJ JEEP GRAND CHEROKEE (1999 - 2004)

FRONT BUMPER53
REAR BUMPERS55
SLIDERS54

FORD BRONCO (1966 - 1977)

BUMPERS58
----------------	----------------

AUTHORIZED PARTNERS.....2

POWDER COAT60

FABRICATION COLLARS59

FLAT TOWING1

LIGHT MOUNTS6

NEW PRODUCTS4

UNIVERSAL PARTS5



ROCK HARD 4x4 reserves the right to change any catalog content, including pricing, at any time without notice. Any product return is subject to a 15% restocking fee. Some photos included in this catalog, as well on the official ROCK HARD 4x4 website, or any dealer website or search result, may vary from actual product received. Some photos may include options not included in actual product. Product specifications may change without notice.

All products are intended for off road use only - check with local or state laws prior to use. Please use products responsibly as off roading is inherently dangerous. Buyer assumes all risk. ROCK HARD 4x4 accepts all major credit cards. Some photos may include options not included.

MADE IN USA. **NO EXCUSES.**

Every single ROCK HARD 4x4 product we produce must safeguard the legacy started in 1991. We set out to build a premium line of Jeep armor and safety upgrades in the USA, and we have not compromised since.

100% MADE IN NEBRASKA.

There is a certain level of quality you can only maintain when you build parts in the United States, under your own roof, with family members running the show. No compromise, no excuses.

OUR PROMISE TO YOU.

We promise to give you the customer service you deserve.

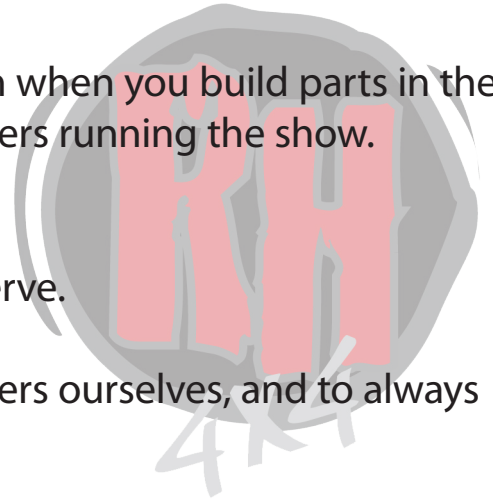
We promise to promptly correct any error we make.

We promise to remember our roots, that we are wheelers ourselves, and to always love what we do.

Simply put, we promise to care.

**“I THINK WE'RE ON TO
SOMETHING HERE DAD...”**

James Barth to father Lew, circa 1991 when a row of Jeeps at Tierra Del Sol each had a Rock Hard 4x4 part installed - proving wheelers had embraced their 100% family owned company and American made product.



FLAT TOWING SOLVED

ALL ROCK HARD 4X4 FRONT BUMPERS CAN BE UPGRADED WITH OUR LASER CUT TOW BAR BRACKET ADAPTERS! DON'T GIVE UP YOUR GROUND CLEARANCE WITH A BASE PLATE - FLAT TOW SAFELY AND SECURELY WITH ROCK HARD 4X4!

OUR 100% MADE IN THE USA ROCK HARD 4X4™ TOW BAR ADAPTER KITS ALLOW YOU TO FLAT TOW YOUR JEEP GLADIATOR, WRANGLER JL, JK AND TJ/LJ. THESE EASY TO INSTALL SYSTEMS MATE TO YOUR ROCK HARD 4X4™ FRONT BUMPER AND ADAPT TO BLUE-OX™, REESE™, AND ROAD MASTER™ TOW BARS.

ALL ROCK HARD 4X4™ STEEL AND ALUMINUM JK AND SELECT TJ/LJ FRONT BUMPERS ARE COMPATIBLE WITH OUR TOWING BRACKET KITS. JUST ADD A TOW VEHICLE!

"THESE BRACKETS BOLT RIGHT TO THE BUMPER AT ITS FRAME MOUNTING LOCATIONS AND ELIMINATE HAVING A LOW SLUNG TOW BAR BASE PLATE THAT CAN GET DAMAGED ON OFF-ROAD TRAILS."

- RVMAGONLINE "TWEAKING AN ICON", JULY 2012

TOW BAR BRACKET ADAPTERS

BLUE OX / DEMCO / READY-BRUTE

#RH-8000-BO

ROAD MASTER

#RH-8000-RM

REESE

#RH-8000-RS

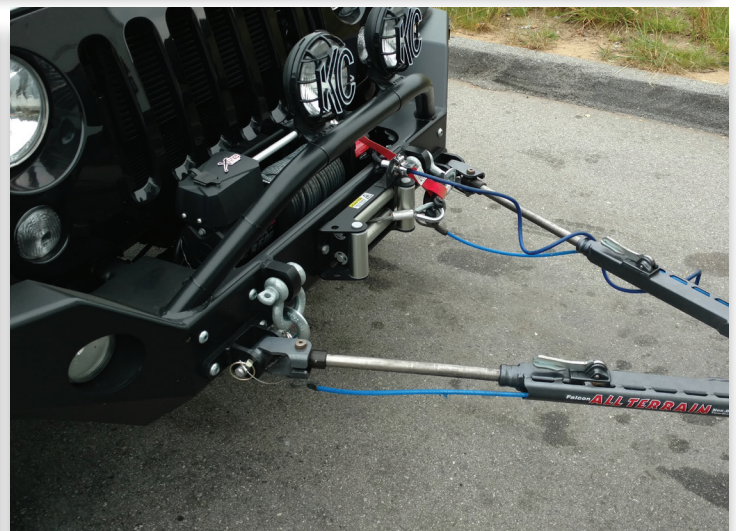
**DITCH THAT BASEPLATE AND
GET YOUR CLEARANCE BACK!**



RH-8000-RM SHOWN



RH-4010 SHOWN



AUTHORIZED PARTNERS

PEANUT BUTTER AND JELLY, SYRUP AND WAFFLES, WINCHES AND BUMPERS!
SOME THINGS ARE JUST MEANT TO BE TOGETHER, WHICH IS WHY WE PARTNERED WITH
OTHER INDUSTRY LEADING COMPANIES TO OFFER ACCESSORIES FOR OUR OWN PARTS.
WINCHES FOR BUMPERS, LIGHTS FOR MOUNTS, FUEL CANS FOR CAN MOUNTS.
IF WE CAN MAKE UPGRADING EASIER - WE WILL!



Authorized Distributor
Contact us to add any
WARN Winch to your order.

YOU'LL SEE THIS LOGO INSIDE THIS CATALOG SEVERAL TIMES AS A REMINDER THAT NOT ONLY CAN WE UPGRADE THE FRONT OF YOUR RIG, BUT WE CAN ALSO UPGRADE YOUR BUMPER! WE STOCK MANY WARN WINCHES MAKING YOUR UPGRADE PROCESS EASIER. ALL OUR BUMPERS ARE WINCH READY - REQUIRING NO SPECIAL PARTS NOT ALREADY INCLUDED.

Authorized Distributor
Contact us to add any
KC HiLiTES light to your order.



WE MANUFACTURE LIGHT MOUNTS - SO IT JUST MAKES SENSE TO ALSO OFFER YOU THE MOST RECOGNIZED NAME IN OFF ROAD LIGHTING!

LOOK FOR THIS LOGO ON PAGE 6 WHEN YOU CHECK OUT OUR 100% BOLT-ON LIGHT MOUNTS.



CARRYING SPARE FUEL AND WATER IS EFFORTLESS WITH OUR REAR BUMPER AND TIRE CARRIER OPTIONS.

OUR TANK MOUNTS SUPPORT MANY DIFFERENT STYLES OF GEAR, BUT ROTOPAX ARE UNDOUBTEDLY THE LEADER IN EXTENDED TRIP FLUID STORAGE.

ADDING OUR TANK MOUNTS? ADD ROTOPAX!

NEW RH4X4 PRODUCTS

THE LATEST AND GREATEST PARTS MANUFACTURED IN THE USA

JL FACTORY FRONT BUMPER WINCH MOUNTING PLATES

- FITS MOST POPULAR WINCHES
- BLACK POWDER COAT FINISH

PLASTIC FRONT BUMPER

#RH-90205

STEEL FRONT BUMPER

#RH-90206



BOLT ON CONTROL ARM SKIDS

- 1/4" THICK STEEL
- BLACK POWDER COAT FINISH
- 100% BOLT-ON INSTALLATION
- HARDWARE INCLUDED

JT 2020 - CURRENT

FRONT **#RH-90513**

REAR **#RH-80514**

COMBO **#RH-80515**

JL 2018 - CURRENT

FRONT **#RH-90513**

REAR **#RH-90514**

COMBO **#RH-90515**

JK 2007 - 2018

FRONT **#RH-9030**

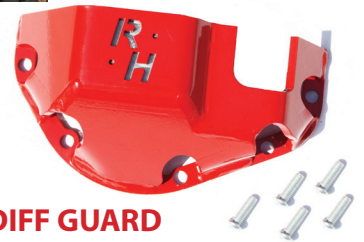
REAR **#RH-9031**

COMBO **#RH-9032**

TJ/LJ/XJ 1984 - 2006

FRONT **#RH-9029**

REAR **#RH-9033**



HARDHAT DIFF GUARD

DANA 30

RED **#RH-9050**

BLACK **#RH-9052**

RAW **#RH-9054**

DANA 44 (FITS TJ/JK MODELS)

RED **#RH-9051**

BLACK **#RH-9053**

RAW **#RH-9055**

MOLLE CAGE CARGO WRAPS

2018 - CURRENT JL/JT 2/4DR FRONT

*REQUIRES RH-90700

#RH-1406

2018 - CURRENT JL 4DR REAR

*REQUIRES RH-90701

#RH-1407

2020 - CURRENT JT REAR

*REQUIRES RH-80700

#RH-1408

2007 - 2018 JK 2/4DR FRONT

*REQUIRES RH-1030 OR RH-1030-1L

#RH-1401

2007 - 2018 JK 4DR REAR

*REQUIRES RH-1030-A

#RH-1402

2007 - 2018 JK 2DR REAR

*REQUIRES RH-1030-C

#RH-1403

1997 - 2006 TJ/LJ FRONT

*REQUIRES RH-1001

#RH-1404

1987 - 1995 YJ FRONT

*REQUIRES RH-1002

#RH-1405



EACH INCLUDES 1 FIXED MOLLE CARGO POUCH WITH HEAVY DUTY ZIPPERS. PRECISION FIT WITH INDUSTRIAL GRADE VELCRO FASTENS TO RH4X4 CAGE TUBING. STORE FLASHLIGHTS, TOOLS, GLOVES, AND MORE! WORKS WITH FACTORY HARD AND SOFT TOP PLUS OUR MOLLE CAGE CARGO WRAPS ARE COMPATIBLE WITH POPULAR SHADES LIKE SPIDERWEBSHADE AND BARTACT!

NEW RH4X4 PRODUCTS

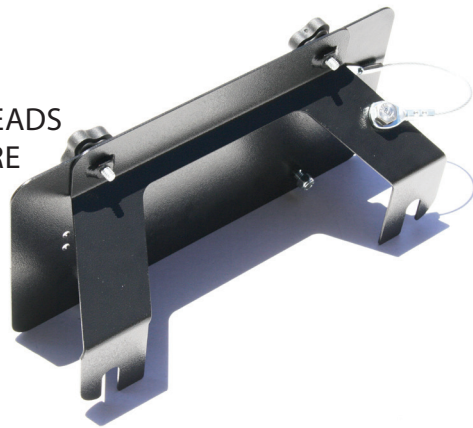
THE LATEST AND GREATEST PARTS MANUFACTURED IN THE USA

HAWSE AND ROLLER FAIRLEAD LICENSE PLATE MOUNT

UNIVERSAL FITMENT

#RH-4004

SIMPLE INSTALLATION
 FITS MOST POPULAR FAIRLEADS
 STAINLESS STEEL HARDWARE
 POWDER COATED BLACK
 LANYARD INCLUDED



DOUBLEWALL CROSSMEMBER UPGRADES

- 3/16" THICK STEEL DOUBLE WALL = 3/8" THICK
- BLACK POWDER COAT FINISH
- 100% BOLT-ON INSTALLATION
- AUTO / MANUAL TRANS COMPATIBLE

2007 - 2011 3.8L

#RH-9060

2012 - 2018 3.6L

#RH-9061



SQUARE LIGHT / ROUND HOLE ADAPTERS FOR RH4X4 BUMPER

- BLACK POWDER COAT FINISH
- SOLD AS A PAIR
- LIGHTS SOLD SEPARATE

FITS ALL ROCK HARD 4X4 FRONT BUMPERS

#RH-6063



SHOULDER HARNESS BELT HOLSTER

2"-3" WIDE BELT - SOLD INDIVIDUALLY (PER SEAT)

#RH-1451



SEATBELT "DING" DELETE

#RH-1470

FITS YJ/TJ/JK/JL/JT 1987 - 2020
 DISABLES SEAT BELT CHIME
 SOLD INDIVIDUALLY



TRAIL STEP

1997 - 2006 TJ - YJ

#RH-6016

EASILY SLIPS INTO DOOR SILL
 CONVENIENT STEP FOR LIFTED JEEPS
*TUBE STYLE SLIDER REQUIRED.



UNIVERSAL RH4X4 PRODUCTS

UNIVERSAL FITMENT WITH UNMATCHED QUALITY



3RD BRAKE LIGHT

#RH-2002-TL

FITS 2-1/2" BORE HOLES
MOUNTS TO TIRE CARRIER
SOME WIRING REQUIRED
CONNECTORS INCLUDED

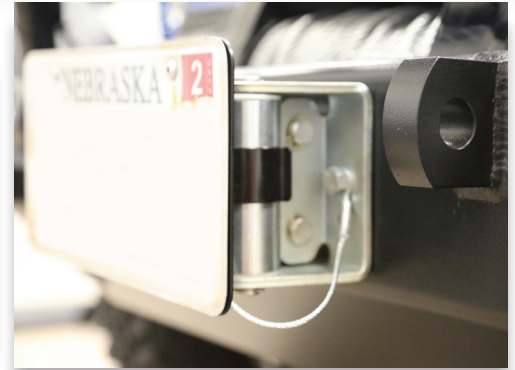


5-WAY ACCESSORY MOUNT

*SHIPS BARE ALUMINUM - UNCOATED

#RH-1021

FITS 1-3/4" OD TUBING



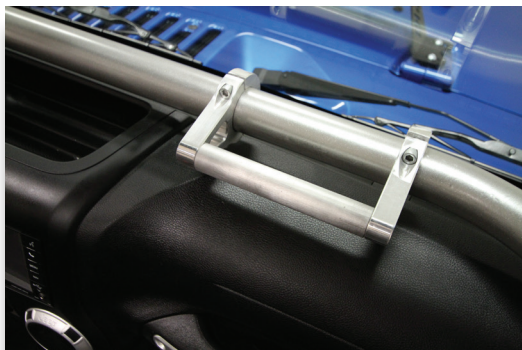
FAIRLEAD PLATE MOUNTS

#RH-4004

HAWSE FAIRLEAD MOUNT

#RH-4006-F

ROLLER FAIRLEAD MOUNT



ALUMINUM GRAB HANDLE

*SHIPS BARE ALUMINUM - UNCOATED

6" #RH-1020-S

12" #RH-1020-L

FITS 1-3/4" OD TUBING



STEERING STABILIZER / TIE ROD CLAMP

1.375" OD JEEP JK 07-18 FACTORY TIE ROD

#RH-9000

*DESIGNED FOR AFTERMARKET STABILIZER WITH 1/2" PIN

1-5/8" OD OVERSIZED TIE ROD

#RH-9001

*DESIGNED FOR AFTERMARKET STABILIZER WITH 1/2" PIN

1-3/4" OD OVERSIZED TIE ROD

#RH-9002

*DESIGNED FOR AFTERMARKET STABILIZER WITH 1/2" PIN

1-1/2" OD OVERSIZED TIE ROD

#RH-9003

*DESIGNED FOR AFTERMARKET STABILIZER WITH 1/2" PIN

RECOVERY D-RING

#RH-4003

9,500 LB 3/4" CLEVIS
SOLD INDIVIDUALLY
(MADE OVERSEAS)



NON-SLIP GRAB HANDLE

#RH-1025

VELCRO - UNIVERSAL
SOLD INDIVIDUALLY



LICENSE PLATE MOUNT W/ LED BRAKE + TAG LIGHT

#RH-4006 - LED PLATE

AND 3RD BRAKE LIGHT
WITH RELOCATION KIT
INCLUDES #RH-4007
POWDER COAT INCLUDED



LICENSE PLATE MOUNT

#RH-4007

LICENSE PLATE MOUNT ONLY
POWDER COAT INCLUDED

OFF-ROAD LIGHT MOUNTS

WHEEL PAST SUNSET WITH OUR HEAVY DUTY LIGHT MOUNTS
ALL LIGHTS SOLD SEPARATELY



20" LED HOOD MOUNTS

JK 07-18

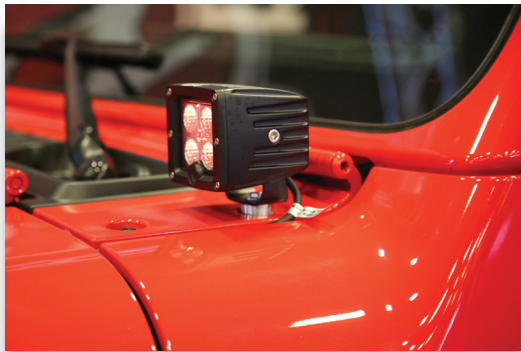
#RH-6051

TJ/LJ 97-06

#RH-6068

HARDWARE INCLUDED
POWDER COAT INCLUDED
NO DRILLING OR CUTTING

THE EASIEST AND MOST AFFORDABLE WAY TO ADD BIG LED BARS TO YOUR JK! OUR HOOD MOUNTS ARRIVE POWDER COATED AND READY TO INSTALL. EXCLUSIVE RUBBER FEET PREVENT SCRATCHING AND THE STAINLESS BOLTS PREVENT CORROSION. USE THE LASER CUT SLOTS TO SECURE YOUR ZIP TIES FOR A CLEAN LOOKING INSTALLATION!



WINDSHIELD MOUNTS

JL JT 18-CURRENT

#RH-90601

*MOJAVE EDITION COMING SOON

JK 07-18

#RH-6050

TJ/LJ/YJ 87-06

#RH-6067

ADD OFF ROAD LIGHTS IN UNDER 5 MINUTES! OUR WINDSHIELD (A-PILLAR) LIGHT MOUNTS REQUIRE NO DRILLING OR CUTTING AND USE YOUR OEM HARDWARE SO YOU KNOW THEY'LL FIT SNUGLY AND SECURELY. THEY ARRIVE POWDER COATED AND USE COMMON HAND TOOLS TO INSTALL IN MINUTES. FITS ALL POPULAR PODS AND UP TO 6" HID LIGHTS! PRO TIP: ANGLE YOUR LIGHTS SLIGHTLY OUTWARD TO HELP ON TURNS!

WINCH FAIRLEAD LIGHT MOUNT

*LIGHTS SOLD SEPARATELY

#RH-6065

FITS ALL ROLLER AND HAWSE FAIRLEADS
POWDER COAT INCLUDED
NO DRILLING OR CUTTING

LICENSE PLATE LIGHT MOUNT - "LPLM"

*LIGHTS SOLD SEPARATELY

#RH-6066

11 GAUGE THICK STEEL
POWDER COAT INCLUDED



Authorized Distributor
Contact us to add any
KC HiLiTES light to your order.

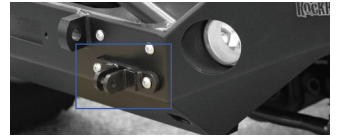


JL/JT FULL WIDTH BUMPERS

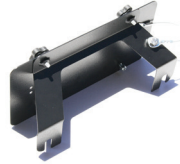
JEEP WRANGLER JL AND GLADIATOR JT (2018 - CURRENT)

- 1/4" THICK STEEL OR ALUMINUM
- FITS FACTORY FOG LIGHTS
- LIGHT TABS INCLUDED
- TUBULAR WINCH GUARD
- 1" THICK RECOVERY TABS
- POWDER COAT INCLUDED
- HARDWARE INCLUDED
- SWAY BAR SKID PLATE INTEGRATED
- NO DRILLING REQUIRED
- BUILT IN WINCH PLATE

THESE BUMPERS ARE FLAT TOWABLE WITH ROCK HARD 4X4 TOW BAR BRACKETS
SEE PAGE 1 FOR MORE INFORMATION



Authorized Distributor
Contact us to add any
WARN Winch to your order.



HAWSE AND ROLLER FAIRLEAD LICENSE PLATE MOUNT
UNIVERSAL FITMENT
#RH-4004



FULL WIDTH LOWERED WINCH
STEEL (137 LBS)
#RH-90211

ALUMINUM (37 LBS!)
#RH-90245

- 69-1/4" WIDE
- FITS ALL POPULAR WINCHES INCLUDING WARN ZEON
- 30% MORE GRILLE AIRFLOW THAN STANDARD WINCH MOUNT



FULL WIDTH STANDARD WINCH
STEEL (137 LBS)
#RH-90210

ALUMINUM (37 LBS!)
#RH-90244

- FAIRLEAD MOUNT INCLUDED IF ADDING WINCH LATER



JL/JT MID-WIDTH BUMPERS

JEEP WRANGLER JL AND GLADIATOR JT (2018 - CURRENT)

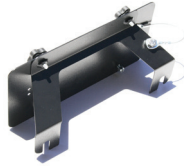
- 1/4" THICK STEEL OR ALUMINUM
- FITS FACTORY FOG LIGHTS
- LIGHT TABS INCLUDED
- TUBULAR WINCH GUARD
- 1" THICK RECOVERY TABS
- POWDER COAT INCLUDED
- HARDWARE INCLUDED
- SWAY BAR SKID PLATE INTEGRATED
- NO DRILLING REQUIRED
- BUILT IN WINCH PLATE

THESE BUMPERS ARE FLAT TOWABLE WITH ROCK HARD 4X4 TOW BAR BRACKETS

SEE PAGE 1 FOR MORE INFORMATION



Authorized Distributor
Contact us to add any
WARN Winch to your order.



HAWSE AND ROLLER FAIRLEAD LICENSE PLATE MOUNT

UNIVERSAL FITMENT

#RH-4004



MID WIDTH LOWERED WINCH

STEEL (135 LBS)

#RH-90216

ALUMINUM (37 LBS!)

#RH-90248

- 56-1/4" WIDE
- FITS ALL POPULAR WINCHES INCLUDING WARN ZEON
- 30% MORE GRILLE AIRFLOW THAN STANDARD WINCH MOUNT



MID WIDTH STANDARD WINCH

STEEL (135 LBS)

#RH-90215

ALUMINUM (37 LBS!)

#RH-90249

- FAIRLEAD MOUNT INCLUDED IF ADDING WINCH LATER



JL/JT GRILLE WIDTH BUMPERS

JEEP WRANGLER JL AND GLADIATOR JT (2018 - CURRENT)

- 1/4" THICK STEEL
- FITS FACTORY FOG LIGHTS
- 1" THICK RECOVERY TABS
- POWDER COAT INCLUDED
- HARDWARE INCLUDED
- NO DRILLING REQUIRED
- WINCH FAIRLEAD MOUNT INCLUDED
- FLAT TOWABLE (BRACKETS SOLD SEP)

THESE BUMPERS ARE FLAT TOWABLE WITH ROCK HARD 4X4 TOW BAR BRACKETS

SEE PAGE 1 FOR MORE INFORMATION



Authorized Distributor
Contact us to add any
WARN Winch to your order.



HAWSE AND ROLLER FAIRLEAD LICENSE PLATE MOUNT
UNIVERSAL FITMENT

#RH-4004



GRILLE WIDTH - INTEGRATED SKID PLATE

STEEL (75 LBS) ALUMINUM (30 LBS)

#RH-90200 **#RH-90240**

INCLUDES LOWER SWAY BAR MOTOR AND CRASH BAR PROTECTING SKID PLATE. NO FRAME HORN OR CRASH BAR MODIFICATION REQUIRED.

GRILLE WIDTH - COMP CUT / OPTIONAL SKID PLATE

STEEL (50 LBS) ALUMINUM (25 LBS)

#RH-90202 **#RH-90242**

HIGH CLEARANCE DESIGN FOR THOSE WHO WANT TO "FRAME CHOP" THEIR LOWER CRASH BAR.



BOLT-ON SKID PLATE FOR RH-90202

OPTIONAL

#RH-90209

BOLT ON 1/4" THICK STEEL SKID PLATE FOR OUR HIGH CLEARANCE FRONT BUMPER.

BOLT ON WINCH GUARD WITH LIGHT TABS

OPTIONAL FOR RH-90200, RH-90202

#RH-90208

LIGHT TABS FIT VIRTUALLY ALL 10" LED LIGHT BARS OR INDIVIDUAL POD LIGHTS.

JL/JT OEM BUMPER UPGRADES

JEEP WRANGLER JL AND GLADIATOR JT (2018 - CURRENT)

WINCH MOUNTING PLATE



PLASTIC FRONT BUMPER WINCH PLATE

- FITS MOST POPULAR WINCHES
- BLACK POWDER COAT FINISH

PLASTIC OEM FRONT BUMPER

#RH-90205

100% BOLT ON

UTILIZES FACTORY TOW HOOKS

INCLUDES NEW TOW HOOKS ON PLATE



STEEL FRONT BUMPER WINCH PLATE

- FITS MOST POPULAR WINCHES
- BLACK POWDER COAT FINISH

STEEL OEM FRONT BUMPER

#RH-90206

100% BOLT ON

MAINTAINS FACTORY TOW HOOKS

GRILLE GUARD HOOP / LIGHT MOUNT



GRILLE GUARD / LIGHT MOUNT HOOP

- FITS RH-90205 WINCH PLATE
- BLACK POWDER COAT FINISH
- FITS 10" LED BAR OR INDIVIDUAL PODS

PLASTIC FRONT BUMPER

#RH-90207

100% BOLT ON



GRILLE GUARD / LIGHT MOUNT HOOP

- FITS JL/JT OEM FRONT BUMPER
- BLACK POWDER COAT FINISH
- FITS 10" LED BAR OR INDIVIDUAL PODS

STEEL FRONT BUMPER

#RH-90204

100% BOLT ON

FRONT BUMPER SKID PLATE



FRONT BUMPER SKID PLATE

- BLACK POWDER COAT FINISH
- 3/16" STEEL
- 100% BOLT ON

PLASTIC FRONT BUMPER

#RH-90510

STEEL FRONT BUMPER

#RH-90511



JL REAR BUMPERS + TIRE CARRIER

JEEP WRANGLER JL (2018 - CURRENT)

- 100% BOLT ON REAR BUMPER
- AVAILABLE IN 1/4" THICK STEEL OR ALUMINUM
- TIRE CARRIER AVAILABLE ON STEEL BUMPER ONLY
- POWDER COAT INCLUDED
- HI-LIFT JACK MOUNT INCLUDED
- CB ANTENNA MOUNT INCLUDED
- 1" THICK RECOVERY TABS
- PARKING SENSOR MOUNTS INCLUDED
- BACK UP SENSOR MOUNTS INCLUDED
- BACK UP CAMERA COMPATIBLE
- LICENSE PLATE MOUNT/LIGHT COMPATIBLE
- OPTIONAL TANK MOUNTS
- OPTIONAL CARGO BASKET



JL REAR BUMPER MODELS

STEEL WITH TIRE CARRIER

#RH-90301 *BUILT-IN RECEIVER

STEEL BUMPER ONLY

#RH-90300 *BUILT-IN RECEIVER

ALUMINUM BUMPER ONLY

40 LBS!

#RH-90340 *USES OEM RECEIVER



RH-90300 SHOWN



ACCEPTS 3RD BRAKE LIGHT



SENSOR COMPATIBLE



ACCEPTS CAMERA

JL BODY MOUNT TIRE CARRIER

JEEP WRANGLER JL (2018 - CURRENT)

- SUPPORTS UP TO 37" SPARE TIRE
- 100% BOLT-ON DESIGN
- ZERO DRILLING OR CUTTING REQUIRED
- POWDER COAT INCLUDED
- ALL HARDWARE INCLUDED
- EXCLUSIVE BILLET ALUMINUM HINGE BRACES
- ADJUSTABLE SPARE TIRE MOUNT FOR CLEARANCE / VISIBILITY - 6"
- HI-LIFT JACK MOUNT INCLUDED
- CB ANTENNA MOUNT INCLUDED
- BACKUP CAMERA COMPATIBLE
- FACTORY 3RD BRAKE LIGHT COMPATIBLE



CARRIER MOUNT OPTIONS

COMPLETE UPGRADE

#RH-90350

ADJUSTABLE TIRE RACK
BILLET HINGE BRACES
HI-LIFT JACK MOUNT
CB ANTENNA MOUNT
MAX TIRE SIZE 37"

6" ADJUSTABLE TIRE RACK ONLY

#RH-90347

MAX TIRE SIZE 35"

BILLET ALUMINUM HINGE BRACES

#RH-90345

MAX TIRE SIZE 37"

STRONGEST WAY TO ADD LARGER TIRES WITHOUT CHANGING REAR BUMPER! EXTREME DUTY BILLET ALUMINUM BRACES SUPPORT ADDED WEIGHT OF OVERSIZED WHEELS AND TIRES. EASY TO INSTALL WITH ZERO DRILLING. TAILGATE OPERATES LIKE FACTORY. INCLUDED ADJUSTABLE TIRE RACK LIFTS YOUR TIRE AND WHEEL FROM FACTORY HEIGHT ALL THE WAY UP TO 6".



SOLID BILLET ALUMINUM HINGE BRACES
SUPPORT UP TO 37" TIRE - ADJUSTABLE MOUNT
FOR 6" UP/DOWN AND IN/OUT OF MOVEMENT

CB ANTENNA MOUNT INCLUDED
WITH 2 DIFFERENT MOUNTING
LOCATIONS AVAILABLE

USES FACTORY SPARE TIRE MOUNT SO NO
CHANGE NEEDED TO MAINTAIN BACK UP
CAMERA AND 3RD BRAKE LIGHT



JACK MOUNT INCLUDED



CB ANTENNA MT INCLUDED



WORKS WITH CAMERA



JT REAR BUMPERS

JEEP GLADIATOR JT (2020 - CURRENT)

- 100% BOLT ON REAR BUMPER
- AVAILABLE IN 1/4" THICK STEEL OR ALUMINUM
- POWDER COAT INCLUDED
- RETAINS FACTORY TOW HITCH RATING
- BED ACCESS STEPS INCLUDED
- RETAINS FACTORY TOW HOOKS
- PARKING SENSOR MOUNTS INCLUDED
- BACK UP SENSOR MOUNTS INCLUDED
- RETAINS TAILGATE MOUNTED CAMERA
- RETAINS OEM LICENSE PLATE LIGHTS



JT REAR BUMPER MODELS

STEEL - RETAINS FACTORY RECEIVER
#RH-80302

COMPATIBLE WITH OR WITHOUT
FACTORY HITCH OPTION.



BED CORNER PROTECTION



**SENSOR/TOW/PLATE LIGHTS
COMPATIBLE**



CONVENIENT BED STEP

TUBULAR ROCKER GUARDS

JEEP WRANGLER JL 2/4DR AND GLADIATOR JT (2018 - CURRENT)

- MOUNTS TO BODY MOUNTS, FLOOR, PINCH WELD
- 2" X 3" RECTANGULAR RAIL COVERS PINCH WELD
- FUNCTIONAL 3.5" STEP OUT FROM BODY
- TAPERED ENDS FOR OVERSIZE TIRE CLEARANCE
- STRONG ENOUGH TO LIFT RECOVER FROM
- NO DRILLING REQUIRED
- POWDER COAT INCLUDED
- HARDWARE INCLUDED



JL TUBULAR ROCKER GUARDS

- 4DR ANGLED UP
#RH-90104
- 4DR ANGLED DOWN
#RH-90106
- 2DR ANGLED UP
#RH-90100
- 2DR ANGLED DOWN
#RH-90102

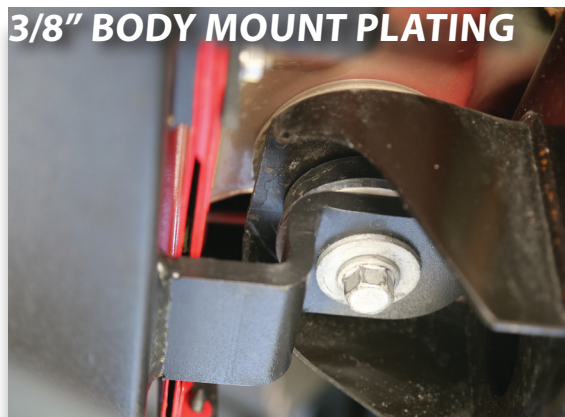
JT TUBULAR ROCKER GUARDS

- 4DR ANGLED UP
#RH-80104
- 4DR ANGLED DOWN
#RH-80106



JL FLAT STEP ROCKER GAURDS WITH LOGO PLATES

- 4DR SILVER LOGO PLATES
#RH-90105
- 4DR BLACK LOGO PLATES
#RH-90107
- 2DR SILVER LOGO PLATES
#RH-90101
- 2DR BLACK LOGO PLATES
#RH-90103



BELLYPAN SKID PLATE SYSTEM

JEEP WRANGLER JL 2/4DR AND GLADIATOR JT (2018 - CURRENT)

THE ORIGINAL, TRUSTED, AND MOST PROVEN SKID PLATE

SYSTEM ON THE MARKET FOR THE JEEP WRANGLER JL AND JT!

THE UPDATED SUSPENSION AND INCREASED FENDER FLARE CLEARANCE OF THE JEEP JL REQUIRES LESS LIFT TO INCREASE TIRE SIZE. LESS LIFT MEANS MORE DRAGGING YOUR UNDERCARRIAGE AND DRIVETRAIN ALL OVER THE ROCKS!

2 NEW 1" BY 2" THICK STEEL CNC MACHINED CROSSMEMBERS EXTEND FROM DRIVER TO PASSENGER SIDE FRAME RAILS AND NOT ONLY GIVE OUR SKID PLATES THE FOUNDATION THEY NEED TO PROTECT YOUR DRIVETRAIN, BUT ALSO TAKE TWIST AND FLEX OUT OF YOUR FRAME.

COMPLETE SKID PLATE SYSTEM

- OIL PAN / TRANSMISSION SKID PLATE
- TRANSFER CASE SKID PLATE
- RESONATOR SKID PLATE
- FUEL TANK SKID PLATE
- DUAL 1" X 2" STEEL CROSSMEMBERS
- TAPERED WASHERS
- HARDWARE

FEATURES

- 3/16" STEEL OR 1/4" ALUMINUM
- 100% BOLT-ON DESIGN
- DUAL 1" THICK X 2" WIDE STEEL CROSSMEMBERS
- POWDER COAT INCLUDED
- ALL HARDWARE INCLUDED
- EXCLUSIVE TAPERED BOLT HEAD PROTECTORS
- EXCLUSIVE OIL CHANGE ACCESS DOOR

COMPLETE BELLYPAN SKID PLATE SYSTEM WITH DUAL CROSSMEMBERS 3.6L

WRANGLER

2018 - CURRENT JL 3.6L 4DR - STEEL @ 260 LBS

#RH-90509

2018 - CURRENT JL 3.6L 4DR - ALUMINUM @ 140 LBS

#RH-90549

2018 - CURRENT JL 3.6L 2DR - STEEL

#RH-90508

2018 - CURRENT JL 3.6L 2DR - ALUMINUM

#RH-90548

GLADIATOR

2020 - CURRENT GLADIATOR JT 3.6L - STEEL

#RH-80508

2020 - CURRENT GLADIATOR JT 3.6L - ALUMINUM

#RH-80548

COMPLETE BELLYPAN SKID PLATE SYSTEM WITH DUAL CROSSMEMBERS 3.6L ETOURQUE

WRANGLER

2021 - CURRENT JL 3.6L 4DR - STEEL

#RH-90523

2021 - CURRENT JL 3.6L 4DR - ALUMINUM

#RH-90553

COMPLETE BELLYPAN SKID PLATE SYSTEM WITH DUAL CROSSMEMBERS ECODIESEL

WRANGLER

2020 - CURRENT JL DIESEL 4DR - STEEL

#RH-90561

2020 - CURRENT JL DIESEL 4DR - ALUMINUM

#RH-90566

COMPLETE BELLYPAN SKID PLATE SYSTEM WITH DUAL CROSSMEMBERS 2.0L TURBO

2018 - CURRENT JL 2.0L 4DR - STEEL @ 290 LBS

#RH-90521

2018 - CURRENT JL 2.0L 4DR - ALUMINUM @ 200 LBS

#RH-90552

2018 - CURRENT JL 2.0L 2DR - STEEL

#RH-90520

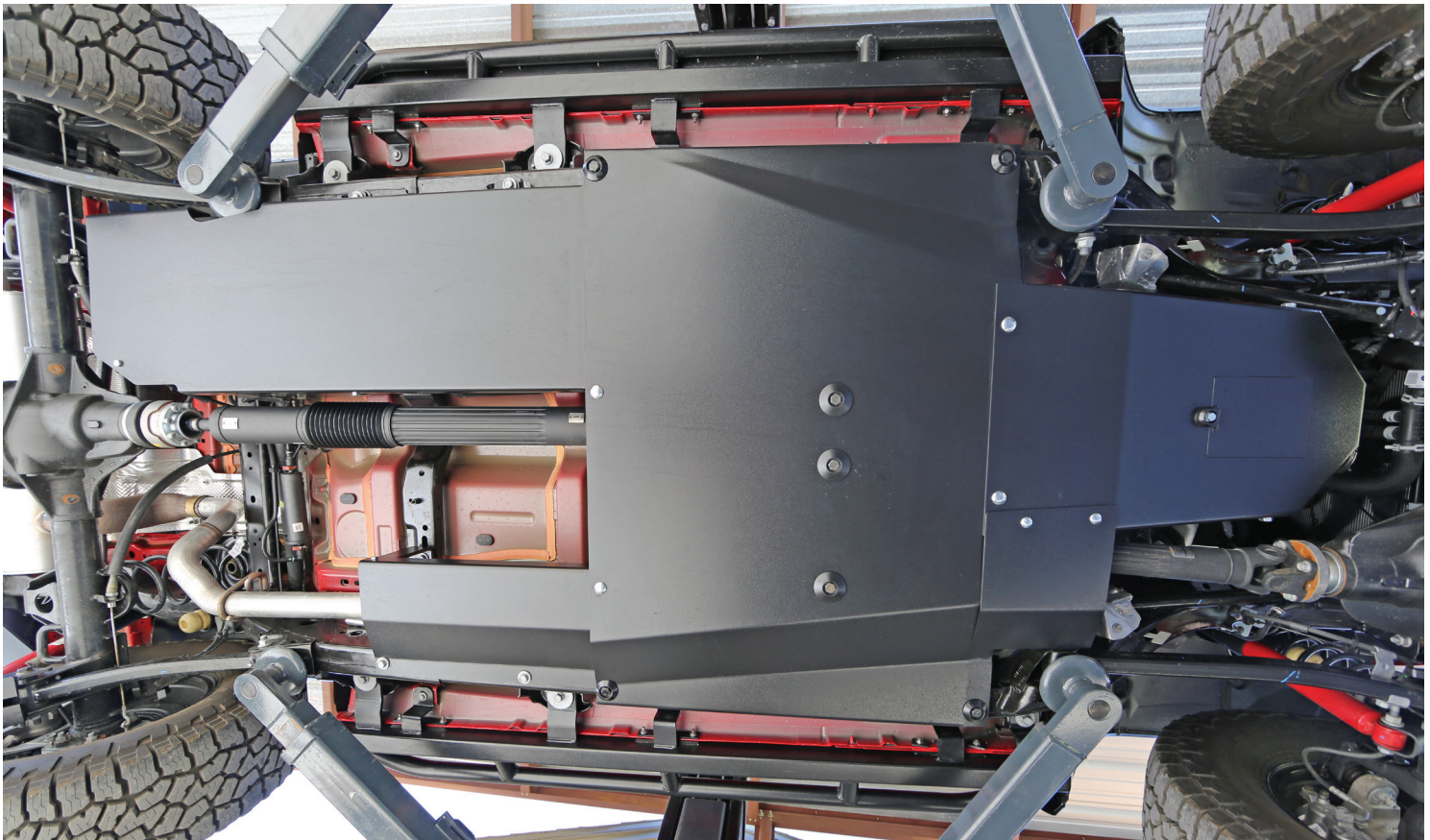
2018 - CURRENT JL 2.0L 2DR - ALUMINUM

#RH-90551



ADDITIONAL ARMOR UPGRADES

JEEP JL 2/4DR AND GLADIATOR JT (2018 - CURRENT)
THE ORIGINAL, TRUSTED, AND MOST PROVEN SKID PLATE
SYSTEM ON THE MARKET FOR THE JEEP WRANGLER JL!



CONTROL ARM SKID PLATES

- 2018 - CURRENT JL AND JT FRONT SET
#RH-90513
- 2018 - CURRENT JL REAR SET
#RH-90514
- 2018 - CURRENT JL FRONT AND REAR SETS
#RH-90515
- 2020 - CURRENT GLADIATOR REAR SET
#RH-80514
- 2020 - CURRENT GLADIATOR JT FRONT AND REAR SETS
#RH-80515

MUFFLER SKID PLATES

3/16" THICK STEEL
BLACK POWDER COAT
100% BOLT ON
WORKS WITH OEM BUMPERS
FITS 3.6L AND 2.0L ONLY



CONTROL ARM SKIDS

1/4" THICK STEEL
HEAVY DUTY HARDWARE
BLACK POWDER COAT
100% BOLT ON INSTALL



MUFFLER SKID PLATES

- 2018 - CURRENT JL - STEEL
#RH-90507.
- 2018 - CURRENT JL - ALUMINUM
#RH-90547



JL/JT CAGE BRACE SYSTEM

JEEP WRANGLER JL 2/4DR AND GLADIATOR JT (2018 - CURRENT)

PREMIUM - PATENTED - PROVEN "THE ORIGINAL BOLT IN CAGE"

REQUIRES NO WELDING - ALL HARDWARE INCLUDED

JL AND JT FRONT CAGE BRACE SYSTEM

*SHIPS BARE STEEL - UNCOATED / NOT POWER TOP COMPATIBLE

2018 - CURRENT 2/4DR MAIN SPORT CAGE

#RH-90700

OPTIONAL T-SECTION PADDING KIT

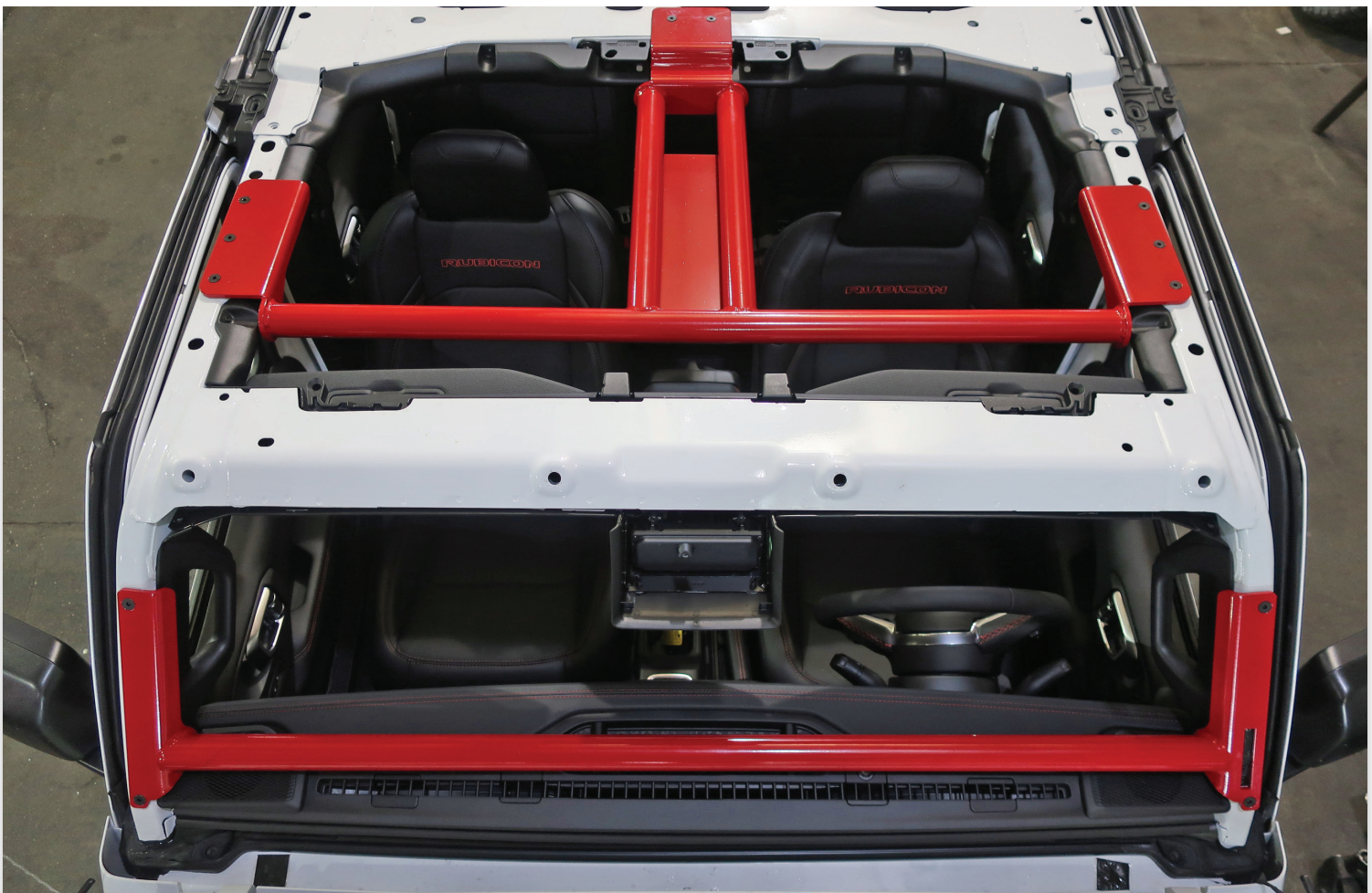
#RH-90700-P

OPTIONAL T-SECTION MOLLE CARGO WRAP

#RH-1406

MAIN CAGE BRACE SYSTEM INCLUDES:

- OVERHEAD T-SECTION
- DRIVER + PASSENGER DASH UPRIGHTS
- LOWER WINDSHIELD BAR
- OVERHEAD ACCESSORY MOUNTING PLATE
- SHIPS BARE STEEL/UNCOATED
- FACTORY HARD/SOFT TOP COMPATIBLE
- SPECIAL INSTALLATION HARDWARE INCLUDED



JL/JT SPORT CAGE UPGRADES

JEEP WRANGLER JL 2/4DR AND GLADIATOR JT (2018 - CURRENT)



REAR OVERHEAD CENTER BARS (2018 - CURRENT)

*SHIPS BARE STEEL - UNCOATED

JL 4DR/UNLIMITED

#RH-90701

CONNECTS B-PILLAR TO REAR HOOP
MAIN (FRONT) SPORT CAGE NOT REQUIRED
DRILLING REQUIRED

OPTIONAL 4DR REAR BARS PADDING KIT

#RH-90701-P

OPTIONAL 4DR REAR MOLLE CARGO WRAP

#RH-1407



C-PILLAR BRACE KIT 4DR (2018 - CURRENT)

*SHIPS BARE STEEL - UNCOATED

JL 4DR/UNLIMITED ONLY

#RH-90702

C-PILLAR PADDING KIT

#RH-90702-P



HARNESS BARS (2018 - CURRENT)

*SHIPS BARE STEEL - UNCOATED

FRONT JL/JT 4DR/UNLIMITED

#RH-90703

FRONT HARNESS BAR PAD KIT

#RH-90703-P

REAR JL 4DR/UNLIMITED

#RH-90704

REAR HARNESS BAR PAD KIT

#RH-90704-P



3RD ROW 4DR (2018 - CURRENT)

*SHIPS BARE STEEL - UNCOATED

JL 4DR/UNLIMITED ONLY

#RH-90705

3RD ROW PADDING KIT

#RH-90705-P

OEM HARD/SOFT TOP COMPATIBLE
(SPRING ASSIST SOFT TOP NOT COMPATIBLE)



GLADIATOR REAR CAGE BRACE SYSTEM (2020 - CURRENT)

*SHIPS BARE STEEL - UNCOATED

JT GLADIATOR ONLY

#RH-80700

OPTIONAL T-SECTION PADDING KIT

#RH-80700-P

OPTIONAL REAR MOLLE CARGO WRAP

#RH-1408

OEM HARD TOP COMPATIBLE
USES PATENTED LOCKING COLLARS
(SPRING ASSIST SOFT TOP NOT COMPATIBLE)



JK SPORT CAGE

JEEP WRANGLER JK 2/4DR UNLIMITED (2007 - 2018)
PREMIUM - PATENTED - PROVEN "THE ORIGINAL BOLT IN CAGE"
REQUIRES NO WELDING - PATENTED STEEL LOCKING COLLARS

JK ULTIMATE SPORT CAGE

*SHIPS BARE STEEL - UNCOATED

2007 - 2010 2/4DR MAIN SPORT CAGE

#RH-1030

2011 - 2018 2/4DR MAIN SPORT CAGE

#RH-1030-1L

OPTIONAL T-SECTION PADDING KIT

#RH-1030-TP

OPTIONAL T-SECTION MOLLE CARGO WRAP

#RH-1401

MAIN SPORT CAGE INCLUDES:

- OVERHEAD T-SECTION
- DRIVER + PASSENGER DASH UPRIGHTS
- LOWER WINDSHIELD BAR
- WELDED GRAB HANDLES
- OVERHEAD ACCESSORY MOUNTING PLATE
- SHIPS BARE STEEL/UNCOATED
- FACTORY HARD/SOFT TOP COMPATIBLE



JK SPORT CAGE UPGRADES

JEEP JK 2/4DR (2007 - 2018)



REAR OVERHEAD CENTER BARS (2007 - 2018)

*SHIPS BARE STEEL - UNCOATED
JK 4DR/UNLIMITED

#RH-1030-A

JK 2DR *RH-1030-B REQUIRED

#RH-1030-C

DRILLING REQUIRED

CONNECTS SPEAKER BAR TO REAR HOOP

MAIN (FRONT) SPORT CAGE NOT REQUIRED

OPTIONAL 4DR REAR PADDING KIT

#RH-1030-RCP4

OPTIONAL 2DR REAR PADDING KIT

#RH-1030-RCP2

OPTIONAL 2DR REAR MOLLE WRAP

#RH-1403



HARNESS BARS (2007 - 2018)

*SHIPS BARE STEEL - UNCOATED

*PADDING KIT SHOWN SOLD SEPARATELY.

FRONT JK 4DR/UNLIMITED

#RH-1030-SFH4

FRONT JK 2DR

#RH-1030-SFH2

FRONT HARNESS BAR PAD KIT

#RH-1030-SFHP

REAR JK 4DR/UNLIMITED

#RH-1030-RH4

REAR JK 2DR

#RH-1030-RH2

REAR HARNESS BAR PAD KIT

#RH-1030-RHP



3RD ROW 4DR (2007 - 2018)

*SHIPS BARE STEEL - UNCOATED

JK 4DR/UNLIMITED ONLY

#RH-1032

3RD ROW PADDING KIT

#RH-1032-RP

OEM HARD/SOFT TOP COMPATIBLE

USES PATENTED LOCKING COLLARS

(SPRING ASSIST SOFT TOP NOT COMPATIBLE)



C-PILLAR BRACE KIT 4DR (2007 - 2018)

*SHIPS BARE STEEL - UNCOATED

JK 4DR/UNLIMITED ONLY

#RH-1035

C-PILLAR PADDING KIT

#RH-1035-P

- STRENGTHENS PASSENGER AREA
- OEM HARD/SOFT TOP COMPATIBLE
- USES PATENTED LOCKING COLLARS
- SOME DRILLING REQUIRED
- FITS 4DR UNLIMITED ONLY
- ZERO WELDING REQUIRED!



ACCESSORY MOUNT BAR 4DR (2007 - 2018)

JK 4DR/UNLIMITED ONLY

#RH-1034

MOUNT SPEAKERS, LIGHTS, ETC!

STRAIGHT ACROSS REAR BAR 2DR (2007 - 2018)

*SHIPS BARE STEEL - UNCOATED

*RH-1030-C SHOWN IN PHOTO, SOLD SEPARATELY

JK 2DR ONLY

#RH-1030-B

- CONNECTS DRIVER + PASS SIDE BARS
- OEM HARD/SOFT TOP COMPATIBLE
- MAIN SPORT CAGE NOT REQUIRED
- 100% BOLT IN INSTALL
- USES PATENTED LOCKING COLLARS

OPTIONAL T-SECTION PADDING KIT

#RH-1030-RTP2



JK FULL WIDTH BUMPERS

JEEP JK 2/4DR (2007 - 2018)

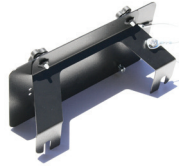
- 1/4" THICK STEEL OR ALUMINUM
- FITS FACTORY FOG LIGHTS
- LIGHT TABS INCLUDED
- TUBULAR WINCH GUARD
- 1" THICK RECOVERY TABS

- POWDER COAT INCLUDED
- HARDWARE INCLUDED
- SWAY BAR SKID PLATE INTEGRATED
- NO DRILLING REQUIRED
- BUILT IN WINCH PLATE

THESE BUMPERS ARE FLAT TOWABLE WITH ROCK HARD 4X4 TOW BAR BRACKETS
SEE PAGE 1 FOR MORE INFORMATION



Authorized Distributor
Contact us to add any
WARN Winch to your order.



HAWSE AND ROLLER FAIRLEAD LICENSE PLATE MOUNT
UNIVERSAL FITMENT
#RH-4004



FULL WIDTH LOWERED WINCH

STEEL (137 LBS)

#RH-5005

STEEL WITH 2" RECEIVER

#RH-5009

ALUMINUM (37 LBS!)

#RH-5045

2012+ 3.6L VAC PUMP RELOCATION KIT
REQUIRED

#RH-5011

- 69-1/4" WIDE
- FITS ALL POPULAR WINCHES INCLUDING WARN ZEON
- 30% MORE GRILLE AIRFLOW THAN STANDARD WINCH MOUNT



FULL WIDTH STANDARD WINCH

STEEL (137 LBS)

#RH-5006

ALUMINUM (37 LBS!)

#RH-5046

- FAIRLEAD MOUNT INCLUDED IF ADDING WINCH LATER



JK MID-WIDTH BUMPERS

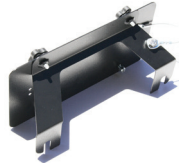
JEEP JK 2/4DR (2007 - 2018)

- 1/4" THICK STEEL OR ALUMINUM
- FITS FACTORY FOG LIGHTS
- LIGHT TABS INCLUDED
- TUBULAR WINCH GUARD
- 1" THICK RECOVERY TABS
- POWDER COAT INCLUDED
- HARDWARE INCLUDED
- SWAY BAR SKID PLATE INTEGRATED
- NO DRILLING REQUIRED
- BUILT IN WINCH PLATE

THESE BUMPERS ARE FLAT TOWABLE WITH ROCK HARD 4X4 TOW BAR BRACKETS
SEE PAGE 1 FOR MORE INFORMATION



Authorized Distributor
Contact us to add any
WARN Winch to your order.



HAWSE AND ROLLER FAIRLEAD LICENSE PLATE MOUNT
UNIVERSAL FITMENT
#RH-4004



MID WIDTH LOWERED WINCH

STEEL (137 LBS)

#RH-5022

STEEL (137 LBS) WITH 2" RECEIVER

#RH-5024

ALUMINUM (37 LBS!)

#RH-5048

2012+ 3.6L VAC PUMP RELOCATION KIT
REQUIRED

#RH-5011

- 56-1/4" WIDE
- FITS ALL POPULAR WINCHES INCLUDING WARN ZEON
- 30% MORE GRILLE AIRFLOW THAN STANDARD WINCH MOUNT



MID WIDTH STANDARD WINCH

STEEL (137 LBS)

#RH-5023

ALUMINUM (37 LBS!)

#RH-5049

- FAIRLEAD MOUNT INCLUDED IF ADDING WINCH LATER

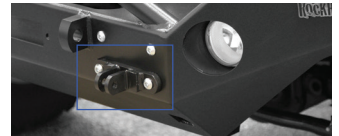


JK GRILLE WIDTH BUMPERS

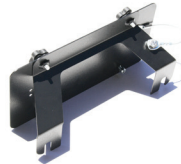
JEEP JK 2/4DR (2007 - 2018)

- 1/4" THICK STEEL OR ALUMINUM
- FITS FACTORY FOG LIGHTS
- LIGHT TABS INCLUDED
- TUBULAR WINCH GUARD
- 1" THICK RECOVERY TABS
- POWDER COAT INCLUDED
- HARDWARE INCLUDED
- SWAY BAR SKID PLATE INTEGRATED
- NO DRILLING REQUIRED
- BUILT IN WINCH PLATE

THESE BUMPERS ARE FLAT TOWABLE WITH ROCK HARD 4X4 TOW BAR BRACKETS
SEE PAGE 1 FOR MORE INFORMATION



Authorized Distributor
Contact us to add any
WARN Winch to your order.



HAWSE AND ROLLER FAIRLEAD LICENSE PLATE MOUNT
UNIVERSAL FITMENT
#RH-4004



GRILLE WIDTH STANDARD WINCH

STEEL

#RH-5001-B

ALUMINUM (35 LBS!)

#RH-5041



GRILLE WIDTH LOWERED WINCH

STEEL

#RH-5002

ALUMINUM (35 LBS!)

#RH-5042

STEEL W/ 2" RECEIVER

#RH-5020

2012+ 3.6L VAC PUMP KIT

#RH-5011



18" TALL STINGER!

GRILLE WIDTH STANDARD WINCH STINGER

STEEL

#RH-5007



GRILLE WIDTH LOWERED WINCH STINGER

STEEL

#RH-5008

STEEL W/ 2" RECEIVER

#RH-5021

JK PRERUNNER BUMPERS

JEEP JK 2/4DR (2007 - 2018)

- 1/4" THICK STEEL OR ALUMINUM
- FITS FACTORY FOG LIGHTS
- LIGHT TABS INCLUDED
- TUBULAR WINCH GUARD
- 1" THICK RECOVERY TABS
- POWDER COAT INCLUDED
- HARDWARE INCLUDED
- SWAY BAR SKID PLATE INTEGRATED
- NO DRILLING REQUIRED
- BUILT IN WINCH PLATE

THESE BUMPERS ARE FLAT TOWABLE WITH ROCK HARD 4X4 TOW BAR BRACKETS
SEE PAGE 1 FOR MORE INFORMATION



ACCEPTS FACTORY FOG LIGHTS



LOWERED WINCH PLATE

PRERUNNER STANDARD WINCH

#RH-5003

INCLUDES PROVISION FOR OEM FOG LIGHTS
INCLUDES LIGHT TABS ON WINCH GUARD
DOES NOT REQUIRE VACUUM PUMP RELOC KIT



PRERUNNER LOWERED WINCH

#RH-5004

30% MORE GRILLE AIRFLOW
NO FOG LIGHT CUTOUT
INCLUDES LIGHT TABS ON WINCH GUARD

*RH-5011 REQUIRED ON
2012 - 2018 JEEP JK'S



JK OEM BUMPER UPGRADES

JEEP JK 2/4DR (2007 - 2018)

**100% BOLT ON 3/16" THICK STEEL SKID PLATES FOR YOUR FACTORY FRONT BUMPER
REPLACES PLASTIC OR THIN STAMPED STEEL AIR DAM WITH HEAVY DUTY SKID PLATE
ALL HARDWARE INCLUDED - BLACK POWDER COAT FINISH**



PLASTIC/X/SPORT/SAHARA/RUBICON

#RH-6070

LASER CUT / CNC BENT
3/16" THICK PLATE STEEL CONSTRUCTION
ROUNDED BOLT HEADS PREVENT DAMAGE



STEEL/HARD ROCK/RECON/10A

#RH-6071

LASER CUT / CNC BENT
3/16" THICK PLATE STEEL CONSTRUCTION
ROUNDED BOLT HEADS PREVENT DAMAGE

JK OEM BUMPER UPGRADES

JEEP JK 2/4DR (2007 - 2018)

HEAVY DUTY WINCH PLATES FOR YOUR FACTORY AND SPECIAL EDITION JK FRONT BUMPERS!
BOLTING ON A ROCK HARD 4X4 WINCH PLATE ALLOWS YOU TO KEEP YOUR FACTORY BUMPER
PLUS INCREASES YOUR OFF ROAD RECOVERY CAPABILITY.

**FITS ALL POPULAR WINCHES INCLUDING
ZEON AND POWERPLANT!**

*RH-5010 SHOWN



100% BOLT ON WINCH PLATE

JK FACTORY BUMPER WINCH PLATES

2007 - 2018 JK JEEP PLASTIC FRONT BUMPER

#RH-5010

ZERO CUTTING, WELDING, DRILLING!
FITS ZEON AND POWERPLANT WINCHES
DOES NOT REQUIRE VAC PUMP RELOC KIT
BRACES WITH OEM TOW HOOKS (REQ'D)
HARDWARE INCLUDED

10A/HARD ROCK EDITION STEEL BUMPER

#RH-5017

ZERO CUTTING, WELDING, DRILLING!
FITS ZEON AND SIDE SPOOL WINCHES
HARDWARE INCLUDED

*RH-5011 REQUIRED ON
2012 - 2018 JEEP JK'S

GRILLE GUARD AND LIGHT MOUNT FOR RH-5017

#RH-5019

WARN POWERPLANT INSTALL KIT FOR RH-5017

#RH-5018



Authorized Distributor
Contact us to add any
WARN Winch to your order.



*RH-5010 SHOWN

WINCH PLATE GRILLE GUARD PLUS WELDED LIGHT TABS

*RH-5010 REQUIRED

*FITS OEM PLASTIC BUMPER ONLY

STANDARD WINCH + LIGHT TABS

#RH-5013

TALL WINCH + LIGHT TABS (POWERPLANT)

#RH-5014

STANDARD WINCH + NO LIGHT TABS

#RH-5015



OEM BUMPER LIGHT MOUNT AND GRILLE GUARD

LIGHT MOUNT 10" WIDE LIGHT BAR TABS OR
INDIVIDUAL LIGHT PODS

*FITS OEM PLASTIC BUMPER ONLY

#RH-6060

LIGHT MOUNT + GRILLE GUARD
HOOP. FITS 10" LIGHT BAR OR
INDIVIDUAL LIGHT PODS

*FITS OEM PLASTIC BUMPER ONLY

#RH-6061



JK BODY MOUNT TIRE CARRIER

JEEP JK 2/4DR (2007 - 2018)

- 100% BOLT ON
- USES FACTORY HOLES IN BODY AND TAILGATE
- 1/2" THICK BRONZE OIL LITE BUSHINGS
- POWDER COAT INCLUDED
- HI-LIFT JACK MOUNT INCLUDED
- CB ANTENNA TAB INCLUDED
- ADJUSTABLE FOR TIRE SIZE AND WHEEL OFFSET
- SUPPORTS UP TO 37" TIRE
- ONE HAND OPERATION
- NO DRILLING REQUIRED
- OPTIONAL PAINTABLE LOGO PLATES



JK BODY MOUNT TIRE CARRIER

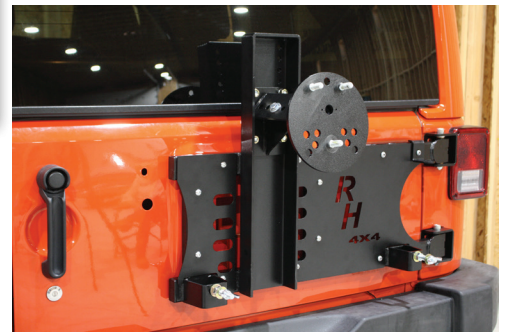
TIRE CARRIER

#RH-5050

MAX CAPACITY: 50 LBS

MAX TIRE SIZE 35"

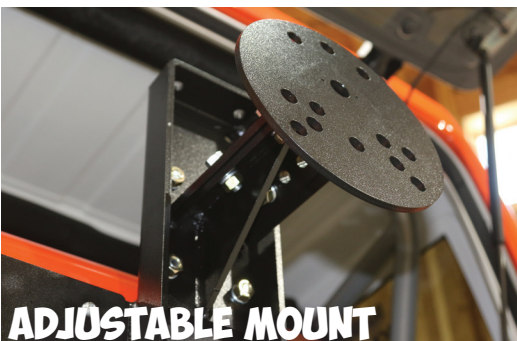
EASY TO INSTALL WITH ZERO CUTTING, DRILLING, OR WELDING REQUIRED. TAILGATE OPERATES JUST LIKE FACTORY USING THE FACTORY HANDLE TO OPEN AND SHUT THE TIRE CARRIER. HEAVY DUTY BRONZE OIL LITE BUSHINGS AND MASSIVE 1/2" BOLTS FIRMLY SECURE THE TIRE CARRIER TO OUR 1/4" THICK STEEL HINGE SIDE MOUNTING BRACKETS.



1/4" THICK STEEL GUSSET SUPPORTS
UP TO 37" TIRE - ADJUSTABLE MOUNT
FOR 4" UP/DOWN AND IN/OUT OF MOVEMENT

CB ANTENNA MOUNT INCLUDED
WITH 4 DIFFERENT MOUNTING
LOCATIONS AVAILABLE

HI-LIFT JACK MOUNT INCLUDED
SECURED SAFELY UNDER SPARE
HORIZONTAL MOUNTING POSITION



ADJUSTABLE MOUNT



CB ANTENNA MT INCLUDED



HI-LIFT JACK MOUNT



JK REAR BUMPERS + TIRE CARRIER

JEEP JK 2/4DR (2007 - 2018)

- 100% BOLT ON REAR BUMPER
- 1/4" THICK STEEL OR ALUMINUM
- POWDER COAT INCLUDED
- HI-LIFT JACK MOUNT INCLUDED
- CB ANTENNA MOUNT INCLUDED
- 1" THICK RECOVERY TABS
- HIGH CLEARANCE TAPERED WINGS
- DUAL TAPERED BEARING HUB ASSEMBLY
- EASY GREASABLE ZERK FITTING
- ADJUSTBLE TIRE MOUNT
- 3-POINT PRELOAD FOR RATTLE FREE USE
- SUPPORTS UP TO 38" TIRE
- EXCLUSIVE TAILGATE BAR
- 2" RECEIVER INCLUDED



JK REAR BUMPER MODELS

STEEL WITH TIRE CARRIER

#RH-5001

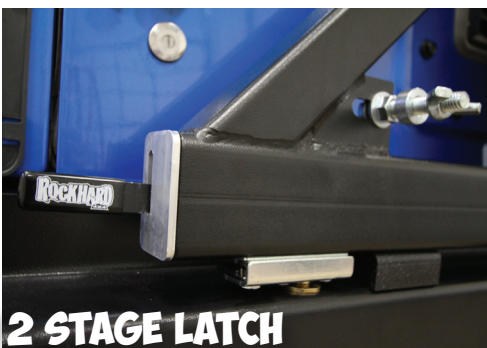
STEEL BUMPER ONLY

#RH-5000

ALUMINUM BUMPER ONLY @40 LBS!

USES OEM RECEIVER

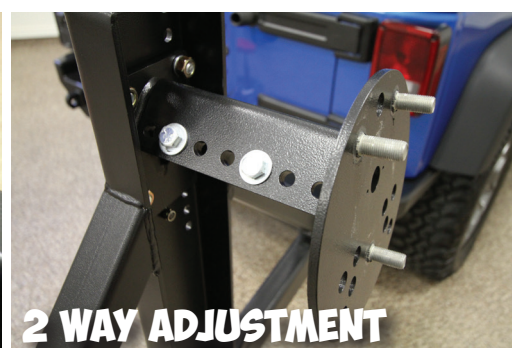
#RH-5040



27 2 STAGE LATCH



DROP DOWN SAFETY PIN



2 WAY ADJUSTMENT

REAR BUMPER UPGRADES

JEEP JK 2/4DR (2007 - 2018)



TIRE CARRIER ROCK RACK CARGO BASKET

#RH-2004

- SUPPORTS UP TO 100 LBS!
- 100% BOLT ON INSTALL
- ADJUSTABLE HEIGHT BASKET
- POWDER COAT INCLUDED
- GAIN NEARLY 5 SQ. FT. OF CARGO SPACE!
- FITS 2"X2" SQUARE TUBE 45° CARRIERS
- INSIDE DIMS: 5-1/4" X 18-1/4" X 38-1/2"

TIRE CARRIER TANK MOUNTS

LEFT DRIVER SIDE #RH-2003-LT

RIGHT PASSENGER SIDE #RH-2003-RT

- FITS NATO, ROTOPAX AND CO2 TANKS
- CB ANTENNA MOUNT TAB INCLUDED
- 100% BOLT ON INSTALL
- ADJUSTABLE HEIGHT
- POWDER COAT INCLUDED
- SECURE ADJUSTABLE STRAPS INCLUDED



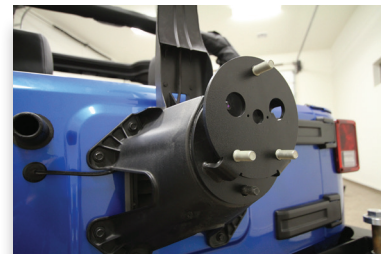
BUMPER MOUNTED MUFFLER SKID PLATE

STEEL *RH-5001 OR RH-5000 REAR BUMPER REQUIRED

#RH-5001-A

ALUMINUM *RH-5040 REQUIRED

#RH-5047



SPARE TIRE ADAPTER BRACKET

#RH-5000-R

MOVES SPARE TIRE UP AND OUT 1.5"
ALLOWS FOR OVERSIZED SPARES ON
OEM CARRIER



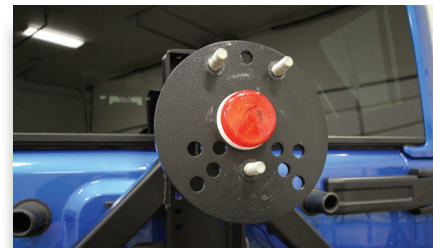
LICENSE PLATE MOUNT

#RH-4006

LED PLATE AND 3RD
BRAKE LIGHT WITH
RELOCATION KIT

#RH-4007

PLATE MOUNT, NO LIGHT



3RD BRAKE LIGHT

#RH-2002-TL

FITS 2-1/2" BORE HOLES
MOUNTS TO TIRE CARRIER
SOME WIRING REQUIRED

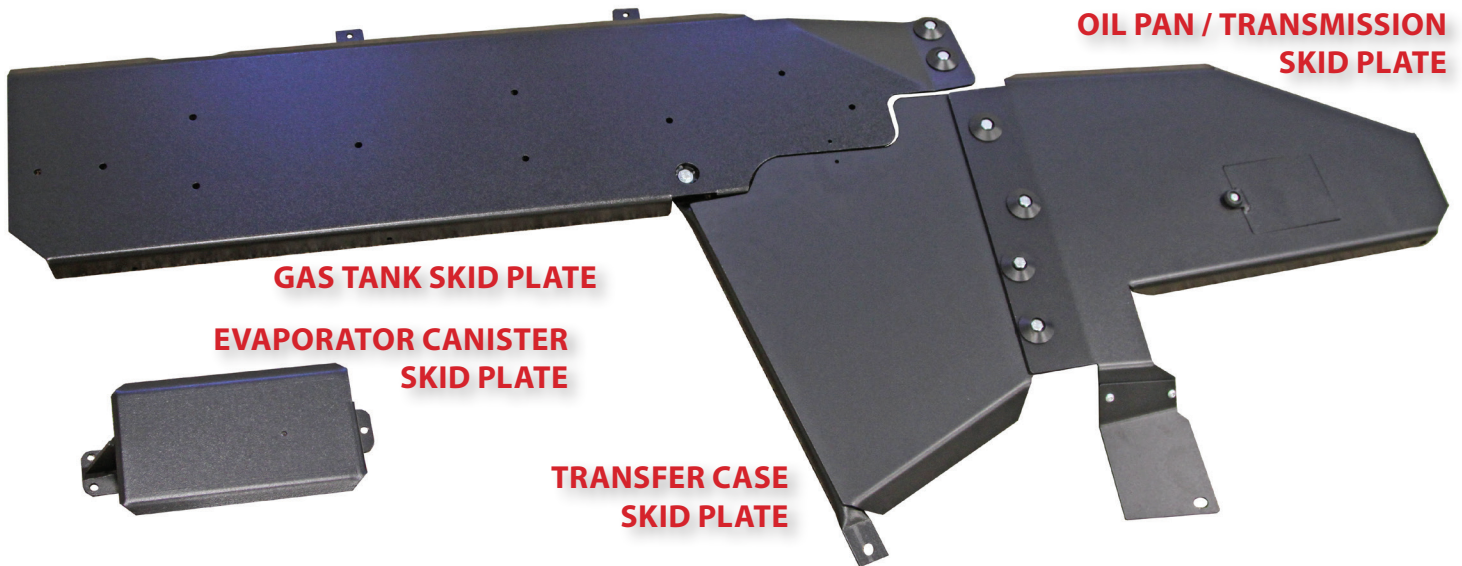


JK SKID PLATES

JEEP JK 2/4DR (2007 - 2018)

THE ORIGINAL, TRUSTED, AND MOST PROVEN SKID PLATE SYSTEM ON THE MARKET FOR THE JEEP WRANGLER JK!

- EXTREME DUTY PROTECTION
- LASER CUT + CNC BENT + JIG WELDED
- NO WELDING REQUIRED TO INSTALL
- POWDER COAT INCLUDED ON ALL SKIDS
- ALL HARDWARE INCLUDED
- SKID PLATES SOLD SEPARATELY
- EFFORTLESS OIL CHANGES
- WORKS WITH MOST SUSPENSION KITS



STEEL 3/16"

OIL PAN / TRANS SKID PLATE - 3/16" STEEL
2007 - 2018 JK 2/4DR SHORT ARM SUSPENSION

#RH-6003

2007 - 2018 JK 2/4DR LONG ARM SUSPENSION

#RH-6000-LA

TRANSFER CASE SKID PLATE - 3/16" STEEL

2007 - 2018

#RH-6004

GAS TANK SKID PLATE - 3/16" STEEL

2007 - 2018 4DR/UNLIMITED

#RH-6001

2007 - 2018 2DR

#RH-6002

EVAP CANISTER SKID PLATE - 3/16" STEEL

2007 - 2018 2/4DR

#RH-6005



ALUMINUM 1/4"

OIL PAN / TRANS SKID PLATE - 1/4" ALUMINUM
2007 - 2018 JK 2/4DR SHORT ARM SUSPENSION

#RH-6043

2007 - 2018 JK 2/4DR LONG ARM SUSPENSION

#RH-6040

TRANSFER CASE SKID PLATE - 1/4" ALUMINUM

2007 - 2018 JK 2/4DR

#RH-6044

GAS TANK SKID PLATE - 1/4" ALUMINUM

2007 - 2018 4DR/UNLIMITED

#RH-6041

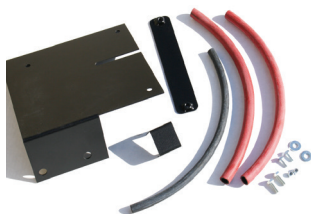
2007 - 2018 2DR

#RH-6042

EVAP CANISTER SKID PLATE - 1/4" ALUMINUM

2007 - 2018 2/4DR UNLIMITED

#RH-6045



EVAP CANISTER RELOCATION

RELOCATES CANISTER ABOVE
REAR AXLE HOUSING

2007 - 2011 JK 2/4DR

#RH-6005-A

2012 - 2018 JK 2/4DR

#RH-6005-B



AEV HEMI SKID MOUNTS

2007 - 2018 JK 2/4DR

#RH-6003-HEMI

JK SKID PLATES / DIFF ARMOR

THE ORIGINAL, TRUSTED, AND MOST PROVEN SKID PLATE SYSTEM ON THE MARKET FOR THE JEEP WRANGLER JK!

RHX SERIES 1/4" STEEL



RHX SKIDS PAINTED SILVER

THE ROCK HARD 4X4 RHX SERIES 1/4" THICK STEEL SKID PLATES OFFER THE MOST PROTECTION YOU CAN BOLT-ON TO YOUR TRAIL RIG. WHILE HEFTY AT 1/4" THICK, THIS INCREASED LEVEL OF PROTECTION IS WORTH EVERY ADDED POUND. NOT FOR THE FAINT OF HEART, THESE ARE A HEAVY SET OF SKIDS!

OIL PAN / TRANS SKID PLATE - 1/4" STEEL

2007 - 2018 JK 2/4DR SHORT ARM / FACTORY SUSPENSION

#RH-6083

2007 - 2018 JK 2/4DR LONG ARM SUSPENSION

#RH-6080

TRANSFER CASE SKID PLATE - 1/4" STEEL

2007 - 2018

#RH-6084

GAS TANK SKID PLATE - 1/4" STEEL

2007 - 2018 4DR/UNLIMITED

#RH-6081

2007 - 2018 2DR

#RH-6082

EVAPORATOR CANISTER SKID PLATE - 1/4" STEEL

2007 - 2018 2/4DR

#RH-6085

CROSSMEMBERS

DOUBLEWALL CROSSMEMBER UPGRADES

3/16" THICK STEEL DOUBLE WALL = 3/8" THICK

BLACK POWDER COAT FINISH

100% BOLT-ON INSTALLATION

AUTO / MANUAL TRANS COMPATIBLE

2007 - 2011 3.8L

#RH-9060

2012 - 2018 3.6L

#RH-9061



CONTROL ARM SKIDS

1/4" THICK STEEL
HEAVY DUTY HARDWARE
BLACK POWDER COAT
100% BOLT ON INSTALL

DANA 30/44 FRONT

#RH-9030

DANA 44 JK REAR

#RH-9031

FRONT + REAR COMBO

#RH-9032



DIFFERENTIAL GUARDS

HARD-HAT DIFFERENTIAL GUARDS

1/4" THICK STEEL
ZINC COATED HARDWARE
STAINLESS BACKING PLATE

DANA 30 RED

#RH-9050

DANA 44 RED

#RH-9051

DANA 30 BLACK

#RH-9052

DANA 44 BLACK

#RH-9053

DANA 30 BARE STEEL

#RH-9054

DANA 44 BARE STEEL

#RH-9055



TUBULAR ROCKER GUARDS

JEEP JK 2/4DR (2007 - 2018)

100% HEAVY DUTY - 100% BOLT ON INSTALL

- HEAVY DUTY ROCKER GUARD WITH SLIDE RAIL
- .120 WALL TUBING FOR MAXIMUM ABUSE
- 1-3/4" OUTER DIAMETER TUBE
- 2" X 3" RECTANGULAR RAIL
- LINES UP WITH TRIMMED PINCH SEAMS
- TAPERED ENDS FOR OVERSIZED TIRES
- FULLY COVERS PINCH SEAM
- FUNCTIONAL 3.5" STEP
- STRONG ENOUGH FOR HI-LIFT RECOVERY
- AVAILABLE IN 3 DESIGNS
- BOLT-ON DESIGN
- FULLY REPLACES FACTORY RAIL
- HARDWARE INCLUDED
- POWDER COAT INCLUDED



4DR/UNLIMITED 2007 - 2018 JK

ANGLED UP TUBULAR ROCK SLIDER

#RH-6009

ANGLED DOWN TUBULAR ROCK SLIDER

#RH-6011

FLAT STEP WITH SILVER LOGO PLATES

#RH-6013 (RH-6017 FOR BLACK PLATES)

2DR 2007 - 2018 JK

ANGLED UP TUBULAR ROCK SLIDER

#RH-6008

ANGLED DOWN TUBULAR ROCK SLIDER

#RH-6010

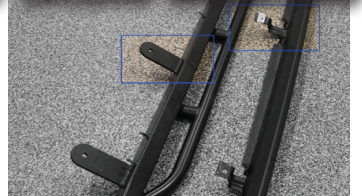
FLAT STEP WITH SILVER LOGO PLATE

#RH-6012 (RH-6018 FOR BLACK PLATES)



FITS TRIMMED WELLS

SECURE MOUNTING



COVERS PINCH SEAM

USABLE 3.5" STEP



BOAT SIDE ROCK SLIDERS

JEEP JK 2/4DR (2007 - 2018)

FOR THE TOUGHEST TRAILS OUT THERE!

- EXTREME DUTY ROCKER GUARDS
- LASER CUT HI-LIFT JACK LIFT POINTS
- MOUNTS TO TUB AND BODY MOUNTS
- 3/16" SKID PROTECTS FRAME RAILS
- LINES UP WITH TRIMMED PINCH SEAMS
- TAPERED ENDS FOR OVERSIZED TIRES
- FULLY COVERS PINCH SEAM
- FUNCTIONAL 3.5" STEP
- STRONG ENOUGH FOR HI-LIFT RECOVERY
- AVAILABLE IN 2 TOP PLATE DESIGNS
- BOLT-ON DESIGN
- FULLY REPLACES FACTORY RAIL
- HARDWARE INCLUDED
- POWDER COAT INCLUDED



4DR/UNLIMITED 2007 - 2018 JK

SMOOTH TOP PLATE/STEP SURFACE

#RH-6006-S

DIAMOND PLATE TOP PLATE/STEP SURFACE

#RH-6006-T

2DR 2007 - 2018 JK

SMOOTH TOP PLATE/STEP SURFACE

#RH-6007-S

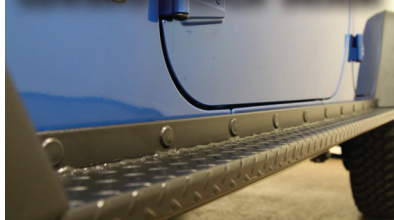
DIAMOND PLATE TOP PLATE/STEP SURFACE

#RH-6007-T

FITS TRIMMED WELLS SECURE MOUNTING



COVERS PINCH SEAM USABLE 3.5" STEP



TJ/LJ SPORT CAGE

JEEP WRANGLER TJ/LJ UNLIMITED (1997 - 2006)

PREMIUM - PATENTED - PROVEN "THE ORIGINAL BOLT IN CAGE"
REQUIRES NO WELDING - PATENTED STEEL LOCKING COLLARS



TJ/LJ ULTIMATE SPORT CAGE

*SHIPS BARE STEEL - UNCOATED

MAIN SPORT CAGE

#RH-1001

OPTIONAL T-SECTION PADDING KIT

#RH-1001-TP

OPTIONAL MOLLE CARGO WRAP

#RH-1404

MAIN SPORT CAGE INCLUDES:

- OVERHEAD T-SECTION
- LEFT + RIGHT + UPRIGHTS
- LOWER WINDSHIELD BAR
- WELDED GRAB HANDLES
- GALVANIZED HARDWARE
- FACTORY HARD/SOFT TOP COMPATIBLE
- WORKS WITH FULL AND HALF DOORS.



OVERHEAD T-SECTION INCLUDES
ACCESSORY MOUNTING PLATE
FOR CB RADIO, FLASHLIGHT, ETC.
CAN BE SPECIAL ORDERED WITHOUT



WORKS WITH ALL FACTORY CAGE
SECTIONS PLUS SOUND BAR OR
SOUND PODS. FACTORY HARD TOP AND
SOFT TOP COMPATIBLE



WELDED GRAB HANDLES MAKE
GETTING IN AND OUT OF YOUR
JEEP A BREEZE. DASH SUPPORT
WORKS WITH FULL/SOFT DOORS

SPORT CAGE UPGRADES

TJ/LJ WRANGLER (1997 - 2006) / PADDING KITS AVAILABLE



STRAIGHT ACROSS REAR BAR

*SHIPS BARE STEEL - UNCOATED

TJ/LJ (1997 - 2006)

#RH-1001-B

REAR BAR PADDING KIT

#RH-1001-RP



OVERHEAD ANGLE BARS (PAIR)

*SHIPS BARE STEEL - UNCOATED

TJ (1997 - 2002) SOUND BAR

#RH-1001-A

TJ/LJ (2003 - 2006) SOUND PODS

#RH-1001-F

ANGLE BAR PADDING KIT

#RH-1001-AP

*DESIGNED TO WORK WITH RH4X4 CAGE
NON-FRONT CAGE CAP KITS:

#RH-1001-G



5-WAY ACCESSORY MOUNT

FITS ALL 1-3/4" OD TUBING!

*SHIPS BARE STEEL - UNCOATED

#RH-1021



FRONT SEAT HARNESS BAR

*SHIPS BARE STEEL - UNCOATED

TJ/LJ (1997 - 2006)

#RH-1004



ANGLED HARNESS BAR

*SHIPS BARE STEEL - UNCOATED

TJ/LJ (1997 - 2006) DRIVER SIDE

#RH-1004-LT

TJ/LJ (1997 - 2006) PASS. SIDE

#RH-1004-RT



REAR SEAT HARNESS BAR

*SHIPS BARE STEEL - UNCOATED

TJ (1997 - 2006)

#RH-1001-J

LJ (2003 - 2006)

#RH-1001-U

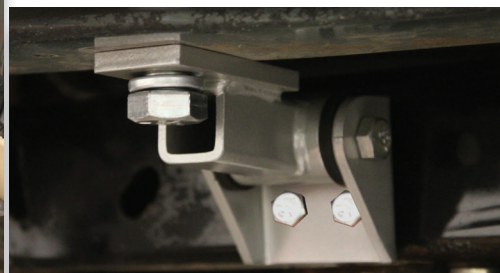


FLOOR KIT

*SHIPS BARE STEEL - UNCOATED

TJ/LJ (1997 - 2006)

#RH-1001-D



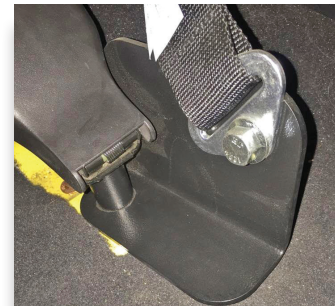
FRAME KIT*

*SHIPS BARE STEEL - UNCOATED

TJ/LJ (1997 - 2006)

#RH-1001-E

*REQUIRES RH-1001-D



TJ / LJ LAP BELT MOUNT

1997 - 2006 TJ/LJ SOLD PER SEAT

#RH-1460

BOLT ON - NO DRILLING REQ'D



FRONT BUMPERS

CJ5 (1976 - 1983) - CJ7 (1976 - 1986) - CJ8 (1981 - 1986)

YJ WRANGLER (1987 - 1995) - TJ/LJ WRANGLER (1997 - 2006)

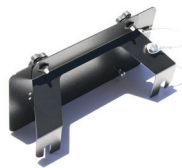
PATRIOT SERIES

- 1/4" THICK STEEL FOR MAX STRENGTH
- 1" THICK DOUBLE WELDED RECOVERY TABS
- WINCH GUARD TUBE WITH LIGHT TABS
- OPTIONAL STEERING BOX SKID PLATE
- WINCH PLATE BUILT IN
- FAIRLEAD MOUNT INCLUDED
- POWDER COAT INCLUDED
- HARDWARE INCLUDED

THESE BUMPERS ARE FLAT TOWABLE WITH ROCK HARD 4X4 TOW BAR BRACKETS
SEE PAGE 1 FOR MORE INFORMATION



Authorized Distributor
Contact us to add any
WARN Winch to your order.



HAWSE AND ROLLER FAIRLEAD LICENSE PLATE MOUNT
UNIVERSAL FITMENT
#RH-4004



EXTREME DUTY FRONT BUMPER

STEEL

#RH-4010

STEEL WITH 2" RECEIVER

#RH-4011

ALUMINUM 33 LBS!

#RH-4050



OPTIONAL STEERING BOX SKID PLATE

TJ/LJ, YJ

#RH-4002

JEEP CJ

#RH-4002-CJ

- FITS ALL RH4X4 TJ/LJ, YJ, CJ
- FRONT BUMPERS
- BOLT ON INSTALL



LEGENDARY SERIES

- 1/4" THICK STEEL & 2" X 4" BOX TUBING
- 1" THICK DOUBLE WELDED RECOVERY TABS
- WINCH GUARD TUBE WITH LIGHT TABS
- OPTIONAL STEERING BOX SKID PLATE
- WINCH PLATE BUILT IN
- FAIRLEAD MOUNT INCLUDED
- POWDER COAT INCLUDED
- HARDWARE INCLUDED



BEST SELLER!

ANGLED FORWARD HOOP

- 46" WIDE
#RH-4001-C46
- 54" WIDE
#RH-4001-C54
- 60" WIDE
#RH-4001-C60



SHORTER PROFILE!

STRAIGHT UP HOOP

- 46" WIDE
#RH-4005-C46
- 54" WIDE
#RH-4005-C54
- 60" WIDE
#RH-4005-C60



EXTRA PROTECTION!

STRAIGHT HOOP W/ TUBEWORK

- 46" WIDE
#RH-4005-CX46
- 54" WIDE
#RH-4005-CX54
- 60" WIDE
#RH-4005-CX60

FREEDOM SERIES

- 1/4" THICK STEEL
- 1" THICK DOUBLE WELDED RECOVERY TABS
- OPTIONAL STEERING BOX SKID PLATE
- WINCH PLATE BUILT IN
- FAIRLEAD MOUNT INCLUDED
- POWDER COAT INCLUDED
- HARDWARE INCLUDED
- FLAT TOWABLE (SOLD SEP.)



WINCH PLATE INCLUDED!

BASIC BUMPER - NO HOOP

- 46" WIDE
#RH-4001



RH-4014

FRONT BUMPER

TJ/LJ, YJ, CJ 1976 - 2006

- #RH-4014
- OPTIONAL SHORT HOOP
#RH-4015
- OPTIONAL STINGER HOOP (DRILLING)
#RH-4016



RH-4015



RH-4016



REAR BUMPERS + TIRE CARRIER

CJ5 (1976 - 1983) - CJ7 (1976 - 1986) - CJ8 (1981 - 1986)

YJ WRANGLER (1987 - 1995) - TJ/LJ WRANGLER (1997 - 2006)

- POWDER COAT INCLUDED
- HI-LIFT JACK MOUNT INCLUDED
- CB ANTENNA MOUNT INCLUDED
- 1" THICK RECOVERY TABS
- DUAL TAPERED BEARING HUB ASSEMBLY
- EASY GREASABLE ZERK FITTING
- ADJUSTABLE TIRE MOUNT
- 3-POINT PRELOAD FOR RATTLE FREE USE
- EXCLUSIVE TAILGATE BAR
- FITS UP TO 38" TIRE
- OPTIONAL CARGO BASKET
- OPTIONAL TANK MOUNTS
- WORKS WITH BODY LIFT
- INCLUDED 2" RECEIVER

REAR BUMPER MODELS

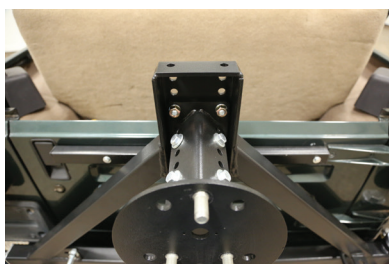
*FRAME BRACE KIT REQUIRED
SEE PAGE 38

WITH TIRE CARRIER

#RH-2001-C

BUMPER ONLY

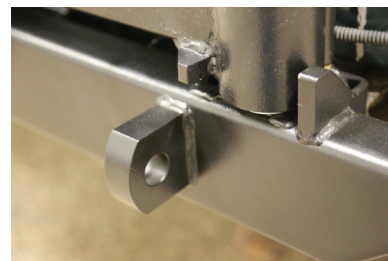
#RH-2001-AC



ADJUSTABLE SPARE TIRE MOUNT - FITS UP TO 38"

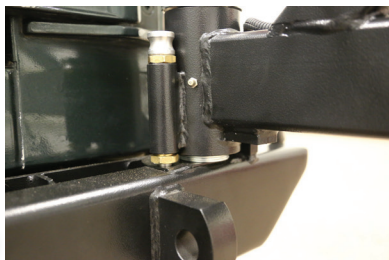


BUMPER PROVIDES MAX BODY PROTECTION



1" THICK DOUBLE WELDED RECOVERY TABS INCLUDED

DROP DOWN SAFETY PIN PREVENTS CLOSURE



2 STAGE EASY TO OPEN LATCH AND STRIKER



2" RECEIVER BUILT INTO BUMPER FOR CLEARANCE



REQUIRED FRAME BRACE KITS

CJ5 (1976 - 1983) - CJ7 (1976 - 1986) - CJ8 (1981 - 1986)

YJ WRANGLER (1987 - 1995) - TJ/LJ WRANGLER (1997 - 2006)

ALL HARDWARE INCLUDED!



REAR BUMPER FRAME BRACE KIT REQUIRED FOR BUMPER INSTALL

JEEP CJ 1976 - 1986

#RH-2001-CJ

JEEP YJ 1987 - 1995
*SOME WELDING REQUIRED

#RH-2001-YJ

JEEP TJ/LJ 1997 - 2006

#RH-2001-TJ

ALLOWS FOR LARGER SPARES, TOWING,
AND RUNNING TANK MOUNT / ROCK RACK



REAR BUMPER UPGRADES

CJ5 (1976 - 1983) - CJ7 (1976 - 1986) - CJ8 (1981 - 1986)

YJ WRANGLER (1987 - 1995) - TJ/LJ WRANGLER (1997 - 2006)



TIRE CARRIER CARGO BASKET

#RH-2004

- SUPPORTS UP TO 100 LBS!
- 100% BOLT ON INSTALL
- ADJUSTABLE HEIGHT BASKET
- POWDER COAT INCLUDED
- FITS 2"X2" SQUARE TUBE 45° CARRIERS
- GAIN NEARLY 5 SQ. FT. OF CARGO SPACE!
- INSIDE DIMS: 5-1/4" X 18-1/4" X 38-1/2"

TIRE CARRIER TANK MOUNTS

LEFT DRIVER SIDE **#RH-2003-LT**

RIGHT PASS. SIDE **#RH-2003-RT**

- FITS NATO, ROTOPAX
- CB ANTENNA MOUNT INCLUDED
- 100% BOLT ON INSTALL
- ADJUSTABLE HEIGHT
- POWDER COATED
- ADJUSTABLE STRAPS INCLUDED



3RD BRAKE LIGHT

#RH-2002-TL

- FITS 2-1/2" CENTER HOLE
- INSTALLS IN MINUTES
- INCLUDES CONNECTORS



ROCK SLIDERS / GUARDS

CJ7 (1976 - 1986) - CJ8 (1981 - 1986)

YJ WRANGLER (1987 - 1995) - TJ/LJ WRANGLER (1997 - 2006)



- 3/16" THICK PLATE STEEL
- LASER CUT AND CNC BENT
- .120" WALL THICK TUBING
- TAPERED ENDS PREVENT TIRE RUB
- STRONG ENOUGH FOR HI-LIFT RECOVERY
- FUNCTIONAL 3.5" STEP
- POWDER COAT INCLUDED
- HARDWARE INCLUDED

TJ (1997-2006)

UNPAINTED WITHOUT SIDE TUBING
POWDER COATED BLACK W/OUT SIDE TUBING
UNPAINTED WITH SIDE TUBING
POWDER COATED BLACK WITH SIDE TUBING

#RH-3001
#RH-3001-C
#RH-3001-S
#RH-3001-SC

LJ UNLIMITED (2003-2006)

UNPAINTED WITHOUT SIDE TUBING
POWDER COATED BLACK W/OUT TUBING
UNPAINTED WITH SIDE TUBING
POWDER COATED BLACK WITH SIDE TUBING

#RH-3001-U
#RH-3001-UC
#RH-3001-US
#RH-3001-UCS

YJ (1987-1995)

POWDER COATED WITH SIDE TUBING

#RH-3003-YJ

CJ7 (1976-1986)

POWDER COATED WITH SIDE TUBING

#RH-3002-CJ

CJ8 SCRAMBLER (1981-1986)

POWDER COATED WITH SIDE TUBING

#RH-3005

FUEL TANK SKID PLATE

TJ/LJ WRANGLER (1997 - 2006)



SKID PLATE
#RH-3008

3/16" THICK STEEL AND LASER CUT + CNC BENT FOR PRECISE FITMENT. INCLUDES FUEL PUMP PROVISION. RIBS PROVIDE EXTRA STRENGTH. POWDER COAT INCLUDED.



CJ8 SPORT CAGE

JEEP CJ8 (1981 - 1986)

**PREMIUM - PATENTED - PROVEN "THE ORIGINAL BOLT IN CAGE"
PATENTED STEEL LOCKING COLLARS - HARNESS BARS AVAILABLE**

TWO VERSIONS AVAILABLE!



CJ8 "PICK UP CAB" SPORT CAGE

*SHIPS BARE STEEL - UNCOATED

MAIN SPORT CAGE
#RH-1005

MAIN SPORT CAGE INCLUDES:

- OVERHEAD T-SECTION
- LEFT + RIGHT + UPRIGHTS
- LOWER WINDSHIELD BAR
- WELDED GRAB HANDLES
- IN CAB HOOP (LEFT PICTURE)
- GALVANIZED HARDWARE

CJ8 "SOFT/HARD TOP" SPORT CAGE

*SHIPS BARE STEEL - UNCOATED

MAIN SPORT CAGE

CLAMPS TO OEM 3" HOOP - SLEEVE WELDING REQUIRED

#RH-1005-B

MAIN SPORT CAGE INCLUDES:

- OVERHEAD T-SECTION
- LEFT + RIGHT + UPRIGHTS
- LOWER WINDSHIELD BAR
- WELDED GRAB HANDLES
- CLAMPS TO FACTORY HOOP W/ SLEEVES
- GALVANIZED HARDWARE



CJ8 REAR ULTIMATE SPORT CAGE

*SHIPS BARE STEEL - UNCOATED

REAR SPORT CAGE "PICK UP CAB"
2" .120 WALL STEEL TUBING

#RH-1005-A



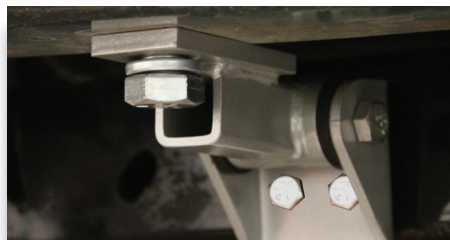
REAR CAGE SECTION!



FLOOR KIT

*SHIPS BARE STEEL - UNCOATED
JEEP CJ8 1981 - 1986

#RH-1003-F



FRAME KIT*

*SHIPS BARE STEEL - UNCOATED
JEEP CJ8 1981 - 1986

#RH-1003-G

*REQUIRES RH-1003-F



CJ8 HARNESS BARS

*SHIPS BARE STEEL - UNCOATED

FRONT SEAT HARNESS BAR

#RH-1005-C (FOR RH-1005-B)

REAR SEAT HARNESS BAR

#RH-1005-D (#RH-1005-A REQD.)

FRONT SEAT HARNESS BAR

#RH-1005-E (FOR #RH-1005)



YJ SPORT CAGE

JEEP WRANGLER YJ (1987 - 1995)

PREMIUM - PATENTED - PROVEN "THE ORIGINAL BOLT IN CAGE"
REQUIRES NO WELDING - PATENTED STEEL LOCKING COLLARS



YJ ULTIMATE SPORT CAGE

*SHIPS BARE STEEL - UNCOATED

MAIN SPORT CAGE

#RH-1002

FRONT T-SECTION PADDING KIT

#RH-1002-TP

MOLLE T-SECTION CAGE WRAP

#RH-1405

MAIN SPORT CAGE INCLUDES:

- OVERHEAD T-SECTION
- LEFT + RIGHT + UPRIGHTS
- LOWER WINDSHIELD BAR
- WELDED GRAB HANDLES
- GALVANIZED HARDWARE
- FACTORY HARD/SOFT TOP COMPATIBLE
- WORKS WITH FULL AND HALF DOORS



YJ SPORT CAGE UPGRADES

YJ WRANGLER (1981 - 1986) / PADDING KITS AVAILABLE



STRAIGHT ACROSS REAR BAR

*SHIPS BARE STEEL - UNCOATED

YJ (1992 - 1995)

#RH-1002-B

YJ (1987 - 1991)*REQUIRES RH-1002-C

#RH-1002-D

REAR BAR PADDING KIT

#RH-1002-RP



OVERHEAD ANGLE BARS (PAIR)

*SHIPS BARE STEEL - UNCOATED

YJ (1992 - 1995)

#RH-1002-A

ANGLE BAR PADDING KIT (87-95)

#RH-1002-AP



FRONT SEAT HARNESS BAR

*SHIPS BARE STEEL - UNCOATED

YJ (1987 - 1995)

#RH-1004-A



ANGLED HARNESS BAR

*SHIPS BARE STEEL - UNCOATED

YJ (1987 - 1995) DRIVER SIDE

#RH-1004-LT

YJ (1987 - 1995) PASS. SIDE

#RH-1004-RT

*DESIGNED TO WORK WITH RH4X4 CAGE
IF NO FRONT CAGE - CAP KITS:
92-95 **#RH-1001-G**



REAR SIDE + OVERHEAD ANGLE BARS (PAIR)

*SHIPS BARE STEEL - UNCOATED

YJ (1987 - 1991)

#RH-1002-C

*DESIGNED TO WORK WITH RH4X4 CAGE
IF NO FRONT CAGE - CAGE CAP KITS:
87-91 **#RH-1001-G**

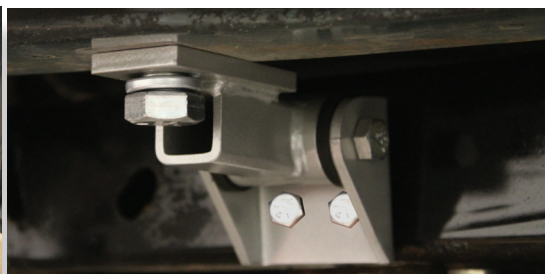


FLOOR KIT

*SHIPS BARE STEEL - UNCOATED

YJ (1987 - 1995)

#RH-1002-F



FRAME KIT*

*SHIPS BARE STEEL - UNCOATED

YJ (1987 - 1995)

#RH-1002-G

*REQUIRES **#RH-1002-F**



REAR SEAT HARNESS BAR

*SHIPS BARE STEEL - UNCOATED

YJ (1992 - 1996)

#RH-1002-H

YJ (1986 - 1991)*REQS RH-1002-C

#RH-1004-YJ



CJ7 SPORT CAGE

JEEP CJ7 (1976 - 1986)

**PREMIUM - PATENTED - PROVEN "THE ORIGINAL BOLT IN CAGE"
REQUIRES NO WELDING - PATENTED STEEL LOCKING COLLARS**



CJ7 ULTIMATE SPORT CAGE

*SHIPS BARE STEEL - UNCOATED

1976 - 1978 MAIN SPORT CAGE

#RH-1007

*2" OD BAR MOUNTS TO INCLUDED ANGLE IRON PLATES THROUGH SIDE OF TUB OVER REAR WHEEL WELL

1979 - 1986 MAIN SPORT CAGE

#RH-1003

*MOUNTS 2-1/4" CAGE TO FLOOR BEHIND SEATS AND WHEEL WELL

OPTIONAL T-SECTION PADDING KIT

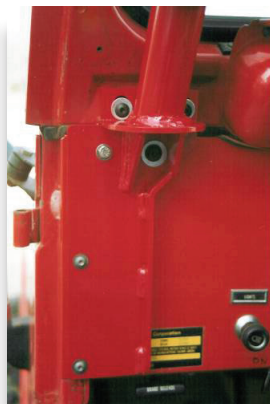
#RH-1003-TP

MAIN SPORT CAGE INCLUDES:

- OVERHEAD T-SECTION
- LEFT + RIGHT + UPRIGHTS
- LOWER WINDSHIELD BAR
- WELDED GRAB HANDLES
- GALVANIZED HARDWARE



CAGE TUBING IS 1-3/4" THICK .120 WALL STEEL. WINDSHIELD BAR GIVES ADDED STRENGTH TO INCLUDED DRIVER + PASS. SIDE UPRIGHT BARS. THIS HELPS STIFFEN YOUR CABIN PLUS GIVES YOUR CAGE INCREDIBLE STRENGTH.



DASH BAR ATTACHES TO WINDSHIELD FRAME AND IS DESIGNED TO BE COMPATIBLE WITH FACTORY SPEAKERS. HARDWARE INCLUDED.



ALL CONNECTIONS TO FACTORY CAGE BARS USE OUR PATENTED 1/2" THICK STEEL COLLARS.



SHOWN WITH FRONT MAIN CAGE, REAR SIDE AND OVERHEAD ANGLE BARS, PLUS STRAIGHT ACROSS THE REAR BAR. THE ULTIMATE PROTECTION - THE ULTIMATE BOLT-IN SPORT CAGE!



CJ7 SPORT CAGE UPGRADES

JEEP CJ7 (1976 - 1986) / PADDING KITS AVAILABLE



STRAIGHT ACROSS REAR BAR

*SHIPS BARE STEEL - UNCOATED

1976 - 1978

#RH-1007-B *REQUIRES RH-1007-B

1979 - 1986

#RH-1003-B *REQUIRES RH-1003-A

STRAIGHT ACROSS REAR BAR PADDING KIT

#RH-1003-RP



REAR SIDE AND OVERHEAD ANGLE BARS*

*SHIPS BARE STEEL - UNCOATED

1976 - 1978

#RH-1007-A

1979 - 1986

#RH-1003-A

OVERHEAD ANGLE BAR PADDING KIT

#RH-1003-AP

*DESIGNED TO WORK WITH RH4X4 CAGE
IF NO FRONT CAGE - CAP KITS:
(76-78) **#RH-1007-D**
(79-86) **#RH-1003-I**



FRONT SEAT HARNESS BAR

*SHIPS BARE STEEL - UNCOATED

1976 - 1978

#RH-1004-C

1979 - 1986

#RH-1004-A



ANGLED HARNESS BAR

*SHIPS BARE STEEL - UNCOATED

1976 - 1978 DRIVER SIDE

#RH-1009-LT

1976 - 1978 PASS. SIDE

#RH-1009-RT

1979 - 1986 DRIVER SIDE

#RH-1004-LT

1979 - 1986 PASS. SIDE

#RH-1004-RT



REAR SEAT HARNESS BAR

*SHIPS BARE STEEL - UNCOATED

1979 - 1986*REQUIRES RH-1003-A

#RH-1004-E

1976 - 1978*REQUIRES RH-1007-A

#RH-1007-E



FLOOR KIT

*SHIPS BARE STEEL - UNCOATED

1976 - 1986

#RH-1003-F

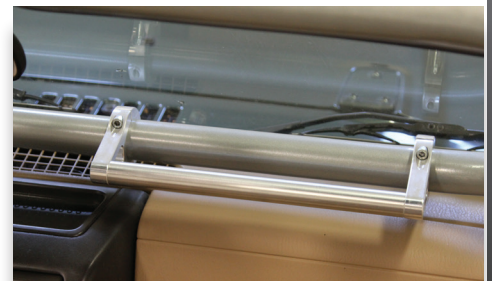


FRAME KIT*

*SHIPS BARE STEEL - UNCOATED

1976 - 1986 *REQUIRES **#RH-1003-F**

#RH-1003-G



ALUMINUM GRAB HANDLE

*SHIPS BARE ALUMINUM - UNCOATED

FITS ALL 1-3/4" OD TUBING!

6" **#RH-1020-S**

12" **#RH-1020-L**



CJ5 SPORT CAGE

JEEP CJ5 (1955 - 1984)

PREMIUM - PATENTED - PROVEN "THE ORIGINAL BOLT IN CAGE"
REQUIRES NO WELDING - PATENTED STEEL LOCKING COLLARS



CJ5 ULTIMATE SPORT CAGE

*SHIPS BARE STEEL - UNCOATED

1955 - 1975 MAIN SPORT CAGE

#RH-1010-A

*REQUIRES #RH-1010

*FOR 2" CAGE

1976 - 1978 MAIN SPORT CAGE

#RH-1006

*FOR 2" CAGE

1979 - 1983 MAIN SPORT CAGE

#RH-1008

*FOR 2-1/4" CAGE

FRONT T-SECTION PADDING KIT

#RH-1003-TP

MAIN SPORT CAGE INCLUDES:

- OVERHEAD T-SECTION
- LEFT + RIGHT + UPRIGHTS
- LOWER WINDSHIELD BAR
- WELDED GRAB HANDLES
- GALVANIZED HARDWARE

CJ5 REPLACEMENT FACTORY

HOOP + SUPPORTS

*SHIPS BARE STEEL - UNCOATED

REPLACEMENT FACTORY HOOP UP TO 1978

#RH-1010

*MAY BE REQUIRED ON #RH-1010-A

CALL FOR DETAILS

REPLACEMENT HOOP INCLUDES:

- SINGLE PIECE HOOP
- LEFT + RIGHT UPRIGHTS
- REAR MOUNTING PLATES
- GALVANIZED HARDWARE



CJ5 SPORT CAGE UPGRADES

JEEP CJ5 (1955 - 1983) / PADDING KITS AVAILABLE



REAR SIDE BARS (PAIR) + STRAIGHT ACROSS REAR BAR

*SHIPS BARE STEEL - UNCOATED

1979 - 1983

#RH-1008-A

1955 - 1978

#RH-1006-A

STRAIGHT REAR BAR PADDING KIT

#RH-1003-RP



FRONT SEAT HARNESS BAR

*SHIPS BARE STEEL - UNCOATED

1955 - 1975

#RH-1010-B

1976 - 1978

#RH-1004-C

1979 - 1983

#RH-1004-B



NON-SLIP GRAB HANDLE

VELCRO - UNIVERSAL

#RH-1025

SOLD INDIVIDUALLY



FLOOR KIT

*SHIPS BARE STEEL - UNCOATED

1976 - 1983

#RH-1003-F



ANGLED HARNESS BAR

*SHIPS BARE STEEL - UNCOATED

1976 - 1978 DRIVER SIDE

#RH-1009-LT

1976 - 1978 PASS. SIDE

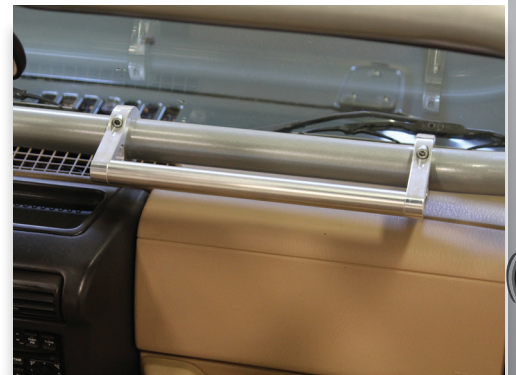
#RH-1009-RT

1979 - 1983 DRIVER SIDE

#RH-1004-LT

1979 - 1983 PASS. SIDE

#RH-1004-RT



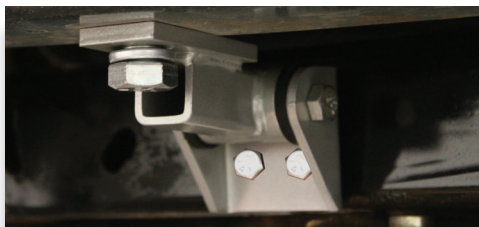
ALUMINUM GRAB HANDLE

*SHIPS BARE ALUMINUM - UNCOATED

FITS ALL 1-3/4" OD TUBING!

6" #RH-1020-S

12" #RH-1020-L



FRAME KIT*

*SHIPS BARE STEEL - UNCOATED

1976 - 1984 *REQUIRES RH-1003-F

#RH-1003-G



5-WAY ACCESSORY MOUNT

*SHIPS BARE ALUMINUM - UNCOATED

FITS ALL 1-3/4" OD TUBING!

#RH-1021



XJ SPORT CAGE

JEEP CHEROKEE XJ 2/4DR (1984 - 2001)



CHEROKEE SPORT CAGE MODELS

*SHIPS BARE STEEL - UNCOATED

1984 - 1996 4 DOOR

#RH-1012

1984 - 1996 2 DOOR

#RH-1012-2

1997 - 2001 4 DOOR

#RH-1012-1

1997 - 2001 2 DOOR

#RH-1012-3

1986 - 1992 COMANCHE TRUCK

#RH-1012-5

MAIN SPORT CAGE INCLUDES:

- 2 MAIN HOOPS
- WINDSHIELD SIDE BARS
- ACROSS DASH BAR
- OUTER CONNECTING BARS
- 45 DEGREE FORWARD BARS
- UNDERCARRIAGE MOUNTS
- 1-3/4" X .120" WALL STEEL TUBING
- NO WELDING REQUIRED
- FLOOR DRILLING REQUIRED
- CONTACT US IF CARPET REMOVED



XJ SPORT CAGE UPGRADES

JEEP CHEROKEE XJ 2/4DR (1984 - 2001)



XJ FRONT OVERHEAD CENTER BAR

*SHIPS BARE STEEL - UNCOATED

1997 - 2001 4 DOOR

#RH-1012-G

1997 - 2001 2 DOOR

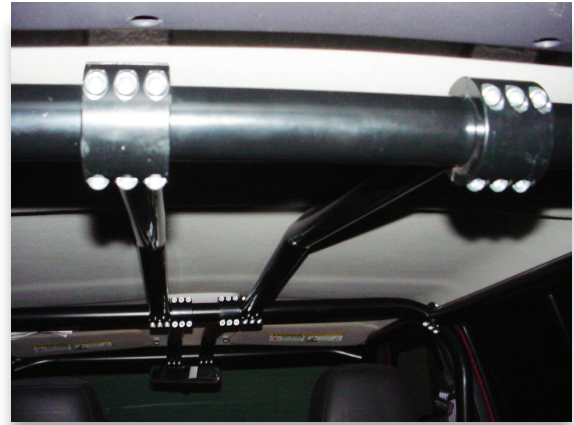
#RH-1012-I

1984 - 1996 4 DOOR

#RH-1012-A

1984 - 1996 2 DOOR

#RH-1012-2FC



XJ REAR OVERHEAD CENTER BAR

*SHIPS BARE STEEL - UNCOATED

1997 - 2001 4 DOOR

#RH-1012-H

1984 - 1996 4 DOOR

#RH-1012-B

1984 - 1996 2 DOOR

#RH-1012-2RC



XJ FRONT SEAT HARNESS BAR

*SHIPS BARE STEEL - UNCOATED

1984 - 2001 2/4 DOOR

#RH-1012-C



XJ REAR BENCH HARNESS BAR

*SHIPS BARE STEEL - UNCOATED

1984 - 2001 2/4 DOOR

#RH-1012-D



XJ FRONT BUMPER

JEEP CHEROKEE XJ 2/4DR 1984 - 2001

JEEP COMANCHE (1986 - 1992)



CHEROKEE + COMANCHE FRONT BUMPER

#RH-1015

*1984 - 1995 REQUIRES TRIMMING
*SHOWN WITH OPTIONAL PARTS
SOLD SEPARATELY

- 3/16" X 2" X 5" THICK STEEL
- 1/4" THICK STEEL SIDE PLATES
- 1" THICK RECOVERY TABS
- LASER CUT + CNC BENT
- POWDER COAT INCLUDED
- ALL HARDWARE INCLUDED



TAPERED 1/4" THICK STEEL
SIDE PLATES FOLLOW WHEEL
WELL CURVE FOR HIGH
CLEARANCE AND CLEAN
LOOK

TIGHTLY HUGS FRONT
GRILLE FOR MAXIMUM
APPROACH ANGLE



EXCLUSIVE MOUNTING METHOD
FOR EXTREME DUTY WINCHING

LOW PROFILE BUMPER FOLLOWS
NATURAL XJ BODY LINES

INTEGRATED LOWER VALENCE
BUILT FROM 3/16" THICK STEEL



XJ BUMPER UPGRADES

JEEP CHEROKEE XJ 2/4DR (1984 - 2001)



FITS MOST POPULAR WINCHES

BOLT ON FRONT BUMPER WINCH PLATE

ROCK HARD 4X4 FRONT BUMPER REQUIRED

1984 - 2001 JEEP XJ

#RH-1015-A



Authorized Distributor
Contact us to add any
WARN Winch to your order.



1-1/2" STEEL TUBING

BOLT ON FRONT BUMPER GRILLE GUARD

ROCK HARD 4X4 FRONT BUMPER REQUIRED

1984 - 2001 JEEP XJ

#RH-1015-BG



XJ SLIDERS

JEEP CHEROKEE XJ 2/4DR 1984 - 2001



ROCK SLIDERS / ROCKER GUARDS

CHEROKEE 2/4DR 1984 - 2001

#RH-1014

- 2" X 3" STEEL TUBING MOUNTS TO UNIBODY
- POWDER COAT INCLUDED
- SOME DRILLING REQUIRED
- BOXED AND TAPERED ENDS FOR OVERSIZED TIRES



XJ REAR BUMPER

JEEP CHEROKEE XJ 2/4DR (1984 - 2001)

- 3/16" X 2" 4" STEEL BUMPER
- 1/4" THICK STEEL SIDE PLATES
- POWDER COAT INCLUDED
- CB / HI-LIFT JACK MOUNT INCLUDED
- 1" THICK RECOVERY TABS
- DUAL TAPERED BEARING HUB ASSEMBLY
- EASY GREASABLE ZERK FITTING
- ADJUSTBLE TIRE MOUNT
- FITS UP TO 38" TIRE
- OPTIONAL CARGO BASKET
- OPTIONAL TANK MOUNT
- INCLUDED 2" RECEIVER

REAR BUMPER MODELS

BUMPER + TIRE CARRIER FOR JEEP FLARES
#RH-1013

BUMPER ONLY FOR JEEP FLARES
#RH-1013-A

BUMPER + TIRE CARRIER FOR
BUSHWACKER POCKET/NOTCH FLARES
#RH-1013-B

BUMPER ONLY FOR
BUSHWACKER POCKET/NOTCH FLARES
#RH-1013-C

BUMPER + TIRE CARRIER FOR
BUSHWACKER FLAT FLARES
#RH-1013-D

BUMPER ONLY FOR
BUSHWACKER FLAT FLARES
#RH-1013-E



RH-1013-B SHOWN WITH NOTCH FLARES



2" TOW RATED RECEIVER
+ SAFETY CHAIN HOOKS



ADJUSTABLE SPARE TIRE
MOUNT FITS UP TO 38"



2 STAGE RATTLE FREE
LATCH MECHANISM

1" THICK STEEL DOUBLE
WELDED RECOVERY TABS



INTEGRATED HI-LIFT JACK
AND CB ANTENNA MOUNTS

DROP DOWN SAFETY PIN
PREVENTS CLOSURE

HEAVY DUTY DOUBLE
BEARING HUB SYSTEM

PROTECTS REAR CORNER
FROM TRAIL DAMAGE



XJ REAR BUMPER UPGRADES

JEEP CHEROKEE XJ 2/4DR (1984 - 2001)



TIRE CARRIER CARGO BASKET

#RH-2004

- SUPPORTS UP TO 100 LBS!
- 100% BOLT ON INSTALL
- ADJUSTABLE HEIGHT BASKET
- POWDER COAT INCLUDED
- FITS 2"X2" SQUARE TUBE 45° CARRIERS
- GAIN NEARLY 5 SQ. FT. OF CARGO SPACE!
- INSIDE DIMS: 5-1/4" X 18-1/4" X 38-1/2"

TIRE CARRIER TANK MOUNTS

LEFT DRIVER SIDE

#RH-2003-LT

- FITS NATO, ROTOPAX
 - 100% BOLT ON INSTALL
 - ADJUSTABLE HEIGHT
 - POWDER COAT INCLUDED
 - ADJUSTABLE STRAPS INCLUDED
 - CB ANTENNA TAB INCLUDED
- *PASS SIDE NOT XJ COMPATIBLE



LICENSE PLATE MOUNT

LED PLATE AND 3RD
BRAKE LIGHT WITH
RELOCATION KIT

#RH-4006

LICENSE PLATE MOUNT
ONLY

#RH-4007

XJ FUEL TANK SKID PLATE

JEEP CHEROKEE XJ 2/4DR (1984 - 2001)



CHEROKEE FUEL TANK SKID

1984 - 2001 JEEP XJ

#RH-3009

- HEAVY DUTY 3/16" STEEL
- LASER CUT
- CNC BENT FOR PRECISE FITMENT
- POWDER COAT INCLUDED
- A MUST HAVE!



ZJ + WJ FRONT BUMPER

JEEP GRAND CHEROKEE ZJ (1993 - 1998)
JEEP GRAND CHEROKEE WJ (1999 - 2004)



1/4" THICK STEEL PLATE CONSTRUCTION
LASER CUT AND CNC BENT FOR PRECISE FIT
1" THICK RECOVERY TABS INCLUDED
ALL HARDWARE INCLUDED
POWDER COAT INCLUDED
HIGH CLEARANCE - EXTREME DUTY!



GRAND CHEROKEE FRONT BUMPER MODELS

1993 - 1998 JEEP ZJ

#RH-7002

1999 - 2004 JEEP WJ

#RH-7052

*FITMENT NOTE: HEADLIGHT AND GRILLE COMBO MUST MATCH EXAMPLE ABOVE



ZJ + WJ BUMPER UPGRADES

ROCK HARD 4X4 FRONT BUMPER REQUIRED



FITS MOST POPULAR WINCHES



1-1/4" STEEL TUBING

BOLT ON FRONT BUMPER WINCH PLATE

ROCK HARD 4X4 FRONT BUMPER REQUIRED

1993 - 1998 JEEP ZJ

1999 - 2004 JEEP WJ

#RH-1015-A

BOLT ON FRONT BUMPER GRILLE GUARD

ROCK HARD 4X4 FRONT BUMPER REQUIRED

1993 - 1998 JEEP ZJ

#RH-7002-B



Authorized Distributor
Contact us to add any
WARN Winch to your order.

ZJ + WJ ROCK SLIDERS



GRAND CHEROKEE ROCK SLIDERS

1993 - 1998 JEEP ZJ

#RH-7003

1999 - 2004 JEEP WJ

#RH-7053

HEAVY DUTY 2" X 3" STEEL TUBING

POWDER COAT INCLUDED

DRILLING REQUIRED

ZJ FUEL TANK SKID



GRAND CHEROKEE FUEL TANK SKID

1993 - 1998 JEEP ZJ

#RH-3010

HEAVY DUTY 3/16" STEEL

LASER CUT + CNC BENT FOR PRECISE FITMENT

POWDER COAT INCLUDED



ZJ + WJ BUMPER TIRE CARRIER

JEEP GRAND CHEROKEE ZJ (1993 - 1998)

JEEP GRAND CHEROKEE WJ (1999 - 2004)

- 3/16" X 2" 4" STEEL BUMPER
- 1/4" THICK STEEL SIDE PLATES
- POWDER COAT INCLUDED
- CB / HI-LIFT JACK MOUNT INCLUDED
- 1" THICK RECOVERY TABS
- DUAL TAPERED BEARING HUB ASSEMBLY
- EASY GREASABLE ZERK FITTING
- ADJUSTBLE TIRE MOUNT
- FITS UP TO 38" TIRE
- OPTIONAL CARGO BASKET
- OPTIONAL TANK MOUNT
- INCLUDED 2" RECEIVER



GRAND CHEROKEE REAR BUMPER WITH TIRE CARRIER

1993 - 1998 JEEP ZJ

#RH-7000

1999 - 2004 JEEP WJ

#RH-7050

GRAND CHEROKEE REAR BUMPER NON-TIRE CARRIER

1993 - 1998 JEEP ZJ

#RH-7001

1999 - 2004 JEEP WJ

#RH-7051



INTEGRATED TOW
RATED RECEIVER
WITH SAFETY
CHAIN HOOKS

DROP DOWN SAFETY
PIN HOLDS TIRE CARRIER
IN LOCKED OPEN
POSITION

HIGH CLEARANCE
EXTREME DUTY 1/4"
THICK CORNERS KEEP
YOUR BODY SAFE

FULLY ADJUSTABLE
TIRE CARRIER FITS
UP TO 38" SPARE
HI LIFT JACK MOUNT +
CB ANTENNA TAB INCLUDED



REAR BUMPER UPGRADES

JEEP GRAND CHEROKEE ZJ (1993 - 1998)
JEEP GRAND CHEROKEE WJ (1999 - 2004)



TIRE CARRIER ROCK RACK CARGO BASKET

#RH-2004

- SUPPORTS UP TO 100 LBS!
- 100% BOLT ON INSTALL
- ADJUSTABLE HEIGHT BASKET
- POWDER COAT INCLUDED
- FITS 2"X2" SQUARE TUBE 45° CARRIERS
- GAIN NEARLY 5 SQ. FT. OF CARGO SPACE!
- INSIDE DIMS: 5-1/4" X 18-1/4" X 38-1/2"



TIRE CARRIER TANK MOUNTS

LEFT DRIVER SIDE #RH-2003-LT

RIGHT PASSENGER SIDE #RH-2003-RT

- FITS NATO, ROTOPAX AND CO2 TANKS
- CB ANTENNA MOUNT TABS INCLUDED
- 100% BOLT ON INSTALL
- ADJUSTABLE HEIGHT
- POWDER COAT INCLUDED
- SECURE ADJUSTABLE STRAPS INCLUDED



3RD BRAKE LIGHT

#RH-2002-TL

- FITS 2-1/2" BORE HOLES
- MOUNTS TO TIRE CARRIER
- SOME WIRING REQUIRED
- CONNECTORS INCLUDED



LICENSE PLATE MOUNT

LED PLATE AND 3RD
BRAKE LIGHT WITH
RELOCATION KIT

#RH-4006

LICENSE PLATE MOUNT
ONLY

#RH-4007



ZJ SPORT CAGE

JEEP GRAND CHEROKEE ZJ (1993 - 1998)

**PREMIUM - PATENTED - PROVEN "THE ORIGINAL BOLT IN CAGE"
REQUIRES NO WELDING - PATENTED STEEL LOCKING COLLARS**

PROTECTS FROM WINDSHIELD TO CARGO AREA AND IS CONSTRUCTED FROM 1-3/4" X .120" STEEL TUBING. NO WELDING REQUIRED. POWDER COAT NOT INCLUDED. SOME FLOOR DRILLING REQUIRED. IF CARPET REMOVED PLEASE CALL PRIOR TO ORDERING.



GRAND CHEROKEE SPORT CAGE ZJ

*SHIPS BARE STEEL - UNCOATED

1993 - 1998

#RH-1031

MAIN SPORT CAGE INCLUDES:

- 2 MAIN HOOPS
- WINDSHIELD SIDE BARS
- ACROSS DASH BAR
- OUTER CONNECTING BARS
- 45 DEGREE FORWARD BARS
- FLOOR MOUNTS
- UNDERCARRIAGE MOUNTS
- ALL HARDWARE



ZJ FRONT SEAT HARNESS BAR

*SHIPS BARE STEEL - UNCOATED

1993 - 1998

#RH-1031-A

ZJ REAR SEAT HARNESS BAR

*SHIPS BARE STEEL - UNCOATED

1993 - 1998

#RH-1031-B



FORD BRONCO 1966 - 1977

ARMOR UPGRADES AND ACCESSORIES!

FREEDOM SERIES FRONT WINCH BUMPER

FRONT BUMPER

#RH-6200

- 1/4" THICK / LASER CUT / CNC BENT
- 1" THICK RECOVERY TABS INCLUDED
- PREDRILLED WINCH PLATE
- FAIRLEAD MOUNT INCLUDED
- FLAT TOWABLE (BRACKETS SOLD SEPARATE)

SHORTY WINCH GUARD HOOP

#RH-6201

- ZERO DRILLING REQUIRED
- INCLUDES 2X LIGHT MOUNTING TABS
- FIT ALL POPULAR 10" LED LIGHT BARS
- POWDER COATED BLACK

STINGER HOOP FOR RH-6201

#RH-6202

DRILLING REQUIRED



PATRIOT SERIES REAR BUMPER

BUMPER WITH TIRE CARRIER

#RH-6101

- POWDER COAT INCLUDED
- FITS UP TO 38" SPARE TIRE
- INTEGRATED 2" RECEIVER
- HEAVY DUTY BEARINGS
- ADJUSTABLE SPARE MOUNT
- ALL HARDWARE INCLUDED
- LASER CUT AND CNC BENT
- HIGH CLEARANCE DESIGN
- HI LIFT JACK MOUNT
- CB ANTENNA TAB INCLUDED

BUMPER ONLY

#RH-6100



FABRICATION COLLARS

PATENTED DESIGN

Protected by Patent US6908107 and used in all our cage systems, our locking collars are the foundation for our Ultimate Sports Cage upgrade. Magazine editors, trail guides, wheelers from across the world, and even competitors have turned to our bolt-in cage for their own vehicles. The strength our collars provide is inherent in how they couple our cage components together.



PATENTED LOCKING COLLAR - FABRICATION READY:

*SHIPS BARE STEEL - UNCOATED

EACH FABRICATION COLLAR COMES WITH MATCHING CAP AND HARDWARE.

INSIDE

DIAMETER	PART #
1.50"	#RH-1150
1.75"	#RH-1175
2"	#RH-1200
2.25"	#RH-1225
3"	#RH-1300



POWDER COAT FINISH

DURABLE, GREAT LOOKING, AND COATED IN THE USA

Quality from start to finish! We professionally powder coat in house to ensure your Rock Hard 4x4 upgrade has a premium, durable, and beautiful coating.

We describe our coating as a semi-smooth, semi-gloss finish. It feels like an egg shell (20% texture) which makes it scratch resistant and cuts down on glare. Rough "hammered" finishes have large pores that make it nearly impossible to wipe away dirt and mud, and mirror-like glossy finishes scratch with even a light touch. Often rough finishes are used to mask poor welds and stress cracks during bending, and high gloss coatings show their wear very quickly. Many years ago we outsourced powder coating and had no control over quality. Now, from prep to media blasting to coating to curing, we have total control over how our products present themselves.

Cleaning: put that heavy duty dishwasher detergent away. Most contain properties that are damaging to even the clear coat on your paint. Mild soaps are ideal. Remove salt and adverse weather road sprays as quickly as possible. Off-road, rinse, repeat!



Learn more about performance driveline and axles we have.

