



RHINO-RACK[®]

MAKE SPACE FOR ADVENTURE



CATALOG 2022



At Rhino-Rack, we believe there's an adventurer in all of us. It's what drives us to create world-ready outdoor gear, born and proven in Australia.

The type of adventure is less important than getting out in the first place. A quick morning surf is as valuable as a big day in the mountains. Every time we load up the car and hit the road, it's a victory.

As someone smart once figured out, a job expands to fill the time you give it. So you have to make space for adventure.



We are proud that many of our Roof Rack Bars and Legs are Australian Made, keep an eye throughout the catalog for the Australian Made logo.



2020 Winner - **Pioneer**
2018 Winner - **Batwing**



reddot winner 2021

2021 Winner - **Pioneer & Stow It**

A white Jeep Wrangler is driving on a sandy beach at sunset. The sun is low on the horizon, casting a warm, golden glow over the scene. The Jeep is equipped with a roof rack and is leaving deep tire tracks in the sand. In the background, a calm body of water stretches to the horizon, with a few other vehicles visible in the distance. The overall atmosphere is serene and adventurous.

**MAKE SPACE
FOR ADVENTURE**

OUR STORY

CORE VALUES

Our values reflect those of a business started by a band of explorers and adventurers with a love and care for the great outdoors. That spirit is in all that we do, and every product we make.

PROTECTING NATURE FOR NATURE-LOVERS

The best thing we can do for the environment is make our stuff last longer. We care deeply about preserving the landscapes we love, and work hard to minimize our environmental impact right across the board - from design, right through to manufacture and distribution.

MAKING ADVENTURE ACCESSIBLE TO ALL

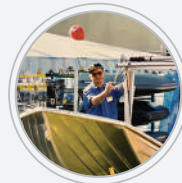
Every journey has to start somewhere. Whether you're a beginner, enthusiast, or veteran explorer – hitting the road for work or play – we strive to build products which help make adventure inclusive for everybody.

DEDICATED TO NEW DISCOVERIES

We're not bound by convention. Our success – and much of the fun – lies in developing new ways to do things. We're always seeking what's next by embracing the thrill of discovery and experimentation.

CHAMPIONING AUSSIE GRIT

Everyone at Rhino-Rack is prepared to roll up their sleeves and give things a go – even if it's outside our comfort zone. It's this Aussie grit – that sense of courage and determination – which unites us and our customers.



1992

Richard Cropley founded Rhino-Rack®. Our first racks were sold in Haberfield, NSW



2008

Rhino-Rack opened its first warehouse in Denver, Colorado.



2016

Rich travels to Zimbabwe to visit the Rhinos we've helped to conserve.



2019

All plastic packaging removed from the Pioneer™ packaging.



2021

Rhino-Rack is acquired by the Clarus Corporation.

1998

Began selling internationally to adventurers in over 60 countries.



2010

Designed and launched our iconic Pioneer™ Platform range.



2018

The Batwing Awning wins our first product design award



2020

Our latest Rhino-Rack® Pioneer™ Platform is awarded a Gold Award at the 2020 Good Design Award



OUR RANGE



ROOF RACKS - PAGE 6



PIONEER™ PLATFORMS - PAGE 38



TRUCK BED SYSTEM - PAGE 67



LUGGAGE CARRIER - PAGE 91



LOAD SECURING - PAGE 88



SHADE - PAGE 97



WATER - PAGE 108



SNOW - PAGE 121



BIKES - PAGE 124





CROSSBAR ROOF RACKS

- 6. [Where Do I Start?](#)
- 8. [Cross Bar Options](#)
- 10. [Bare Roof Mounts](#)
- 11. [Fixed Point Mounts](#)
- 12. [Track Mount](#)
- 13. [Track Mounting](#)
- 15. [Ditch Mount](#)
- 16. [Raised Rail / Solid Rail](#)
- 17. [Gutter Mount](#)
- 18. [Cross Bar Roof Racks - Tech Specs](#)
- 19. [Roof Racks - Tech Specs](#)

CROSSBAR ROOF RACK SYSTEMS

A roof rack system generally consists of a leg and rail combination tailored to suit your vehicles make and model. Depending on your roof type you will be able to identify the mounting system options available.

WHERE DO I START?

CHOOSING THE BEST ROOF RACKS FOR YOUR NEXT ADVENTURE BEGINS WITH THESE 4 STEPS:

STEP ONE

Identify your vehicles roof mounting type

STEP TWO

Select bar type

STEP THREE

Choose a bar style i.e. flush or overhang

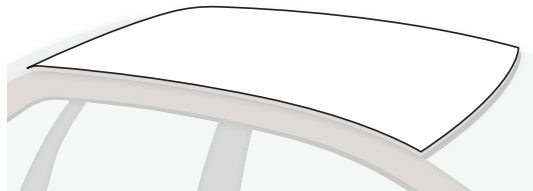
STEP FOUR

Cross check your roof solution via



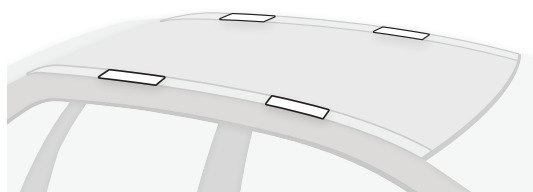
STEP ONE - WHAT DOES YOUR ROOF LOOK LIKE?

1.0 BARE



1.0 BARE ROOF

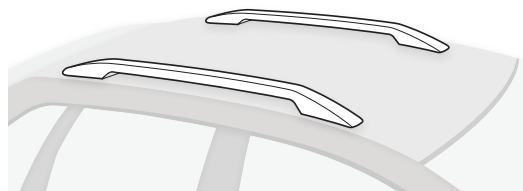
A bare roof has no designated attachment points integrated into the vehicles design.



1.2 FIXED POINT MOUNT

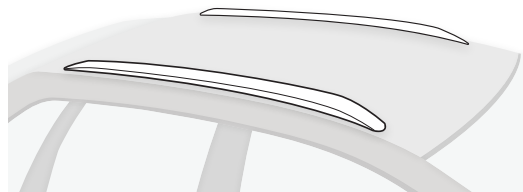
A bare roof that has designated attachment points integrated into the vehicles design known as fixed point mounts.

2.0 RAIL



2.1 RAISED RAIL

A vehicles roof that features factory fitted raised rails can be easily be identified if there is an airgap between the rail and the vehicles roof.



2.2 SOLID RAIL

A vehicles roof that features factory fitted solid rails can be easily identified if the rail has no airgap between the rail and the vehicles roof.

3.0 GUTTER



3.0 GUTTER MOUNT

A vehicle that has a connection between the side of the vehicle and the roof which forms in a shape of a gutter.

STEP TWO - SELECT YOUR CROSS BAR

MULTIPLE SIZES AVAILABLE



VORTEX [VA]

Color



Perfect for recreational and trade use. This is the most versatile crossbar on the market.

- Vortex Secure Core™ locking end caps included.
- Masterkey™ compatible.
- Strong and durable for off-road and commercial use.
- Suits most load carrying accessories on the market.
- Vortex Generating Strip (VGS) is included.
- Extruded structural Aluminum curved to suit the contour of your roof.

Bar Lengths Available:

1065mm / 41.92"
 1180mm / 46.45"
 1260mm / 49.60"
 1375mm / 54.13"
 1500mm / 59.05"
 1650mm / 64.96"
 1800mm / 70.86"
 2000mm / 78.74"



HEAVY DUTY [HD]

Color

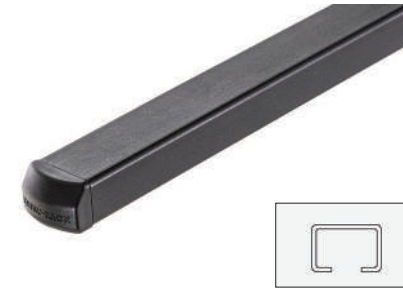


Perfect for trade accessories. For example: ladder racks.

- Designed for heavy duty and commercial use.
- Extruded structural Aluminum.
- Strong and durable for off-road and commercial use.
- Large range of commercial carrying solutions available.
- Rubber strips included.

Bar Lengths Available:

1065mm / 41.92"
 1180mm / 46.45"
 1260mm / 49.60"
 1375mm / 54.13"
 1500mm / 59.05"
 1650mm / 64.96"
 1800mm / 70.86"
 2000mm / 78.74"



EURO

Color



Perfect for light duty load carrying.

- Fits 2500 leg system and SX legs.
- Accessories available.
- Not suitable for off-road or heavy duty commercial use.
- Available in black.

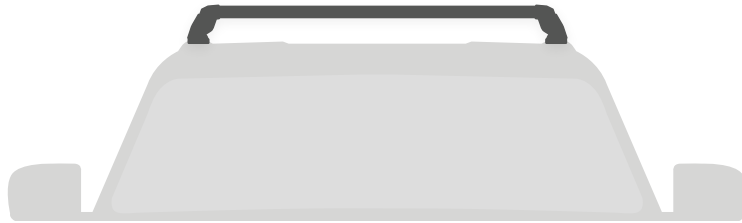
Bar Lengths Available:

1060mm / 41.73"
 1180mm / 46.45"
 1260mm / 49.6"
 1370mm / 53.93"
 1500mm / 59"



STEP THREE - CHOOSE A BAR STYLE

FLUSH OR OVERHANG



FLUSH



A flush system is both sleek and stylish in design where the cross rails 'do not' overhang the mounts.



OVERHANG



A overhang system creates additional storage space where the cross rails 'overhang' the mounts.

STEP FOUR - CHECK YOUR VEHICLE

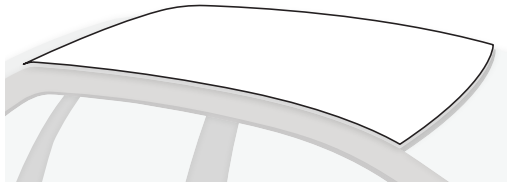
SCAN TO CHECK YOUR SPECIFIC ROOF SOLUTION ON
THE RHINO-RACK FIT YOUR VEHICLE JOURNEY.

1.0 BARE ROOF MOUNTS

CLAMP SYSTEM DESIGNED FOR QUICK AND SIMPLE USE.



For product numbers and specification, see page 18



Clamp systems are designed for vehicle roofs that have no designated attachment points.



1.0.1 VORTEX 2500

If you're after a roof rack that is adaptable, easy to use, strong and light, then the Rhino-Rack® Vortex 2500 roof rack is the ideal solution.



1.0.2 HEAVY DUTY 2500

The HD 2500 roof rack is secure, strong and trade ready.



1.0.3 EURO 2500

The Euro 2500 roof rack is strong, light-weight and suitable for daily carrying applications.



1.0.4 ROC25 (FLUSH)

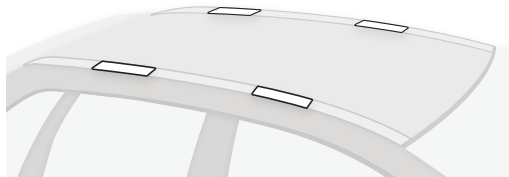
Both sleek and stylish in design, the ROC25 roof rack system is a perfect solution to carry all your gear.

1.2 FIXED POINT MOUNT

WE SPECIALIZE IN A RANGE OF BRACKETS THAT ATTACH TO THE EXISTING MOUNTING POINTS ON YOUR VEHICLE'S ROOF.



For product numbers and specification, see page 18



A range of brackets/base kits solutions designed to allow for fitment onto existing fixed point mounts provided by the vehicle manufacturer.

This can be located on either the bare roof or in some instances on the solid rails.



1.2.1 ROC25

The ROC25 Flush roof rack system is specifically molded to fit the contours of your vehicle's roof.



1,2.2 RC

The RC leg not only suits our specialized tracks, but can also attach to the specific vehicle mounting points that exist on the roof of your vehicle.

Available in 2 heights.

Leg Height RCH: 52mm / 2.1"

Leg Height RCL: 37mm / 1.5"



1.2.3 RLTF

With a high profile design, this leg is perfect for highly curved roofs.



1,2.4 RV

The RV leg is designed to suit our specialized tracks or the specific vehicle mounting points that currently exist on the roof of your vehicle. Available in 2 heights.

Leg Height RVH: 65mm / 2.5"

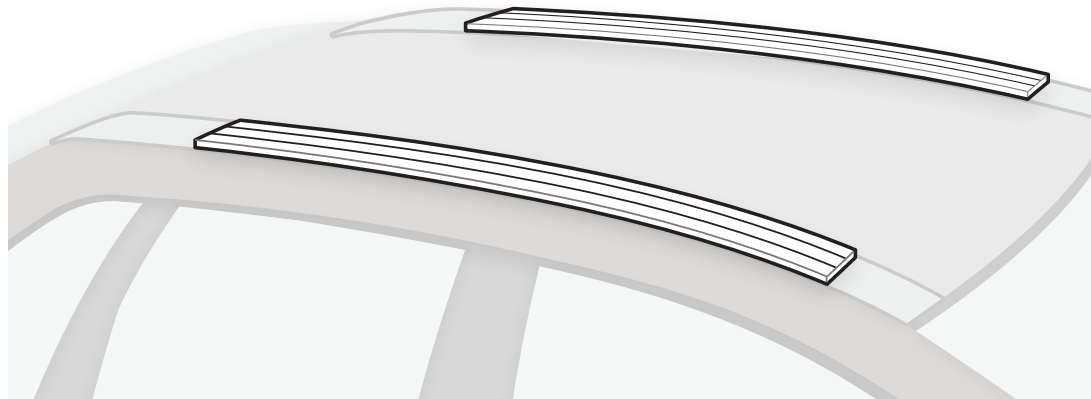
Leg Height RVL: 45mm / 1.7"

1.3 TRACK MOUNT

VEHICLE SPECIFIC TRACKS, DESIGNED FOR STRENGTH AND FLEXIBILITY. OFF-ROAD PROVEN.



For product numbers and specification, see page 18



MAXIMUM ON/OFF-ROAD CARRYING CAPACITY

Tracks are our specialty. We have a wide and extensive range of tracks.

Just some of the vehicles we have tracks for:

Ford Ranger
GMC Yukon XL
Land Rover LR3 & LR4
Ranger Rover Sport
Nissan Frontier

Nissan Titan
Toyota Land Cruiser
Toyota Tacoma
Toyota Tundra



1.3A RTV TRACK

Universal tracks for vehicles. Sold as a pair and includes hardware and end caps.



1.3B RTS TRACK

Specialty tracks for vehicles. Sold as a pair and includes hardware and end caps.



1.3C RTC TRACK

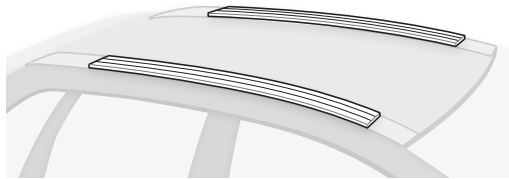
Tracks for your canopy. Sold as a pair, including hardware and end caps.

1.3 TRACK MOUNTING

TRACKS ARE OUR SPECIALTY



For product numbers and specification, see page 18



Vehicle specific tracks are designed for strength and flexibility.



1.3.1 RLT600

The Quick Mount™ RLT600 Leg Set is designed for single person use with a trigger locking system. Full (4) or Half (2) (RLT600H) leg sets to suit Vortex bars. Spacer kits and fitting kits are available for Rhino-Rack® Heavy Duty Bars and Pioneer™ systems.

Leg height: 71mm / 2.8"



1.3.2 RCH/RCL

The RCH Locking Legs are designed with a key locking system to reduce wind resistance and increase security. This unique design helps reduce noise without compromising durability and load carrying capacity.

Leg Height RCH: 52mm / 2.1"

Leg Height RCL: 37mm / 1.5"



1.3.3 RLTF/RLTP

The Rhino-Rack® RLTF/RLTP legs are attached to your roof via a set of mounting brackets or Rhino-Rack® tracks.

Leg Height RLTF: 85mm / 3.3"

Leg Height RLTP: 50mm / 1.9"



1.3.4 RV

The Vortex RV flush leg system can attach to Rhino-Rack tracks or in a fixed mounting position permanently anchored to your roof.

Leg Height RVH: 65mm / 2.5"

Leg Height RVL: 45mm / 1.7"

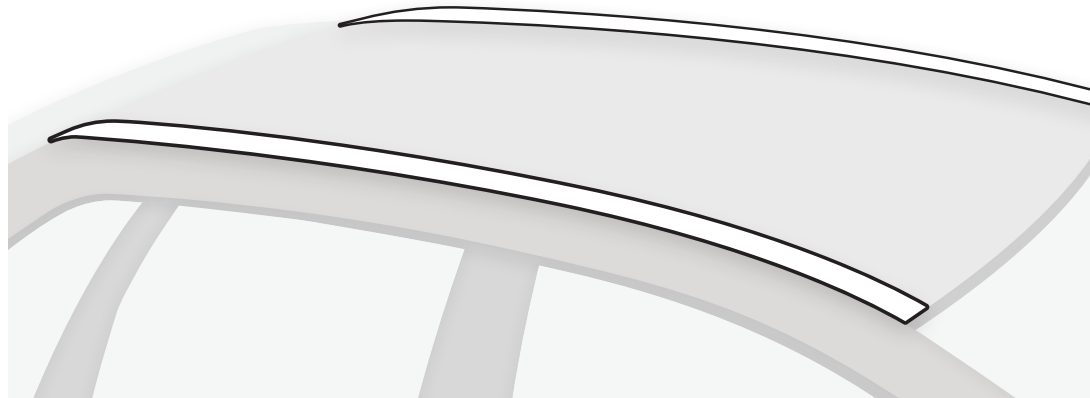


1.4 DITCH MOUNT

SPECIALIZED FIXED MOUNTING POINTS TO ATTACH ROOF RACKS DIRECTLY TO YOUR VEHICLE.



For product numbers and specification, see page 19



WE NOW HAVE A SPECIALIZED OPTION FOR THOSE HARD TO FIT VEHICLES.

Ditch Mount Brackets attach to a vehicle using a specialized fixed hardware to mount roof rack legs directly to a vehicle. Ditch Mount Systems offer a refined, robust and factory-esque fixing point to the vehicle without the need of clamps.

With the use of ditch mount brackets, a greater choice of leg styles and functions are available for many vehicles.

The fitment of ditch mount brackets requires a roof rack specialist due to the technical nature of modification and drilling of the vehicle. Please contact your local Rhino-Rack® dealer for more information or to organize a fitment.

Please refer to the vehicle manufacturer's handbook for specific vehicle load ratings.

Product codes for the ditch mount range are: #RVL, #RVH, #RCL, #RCH, #RLT600

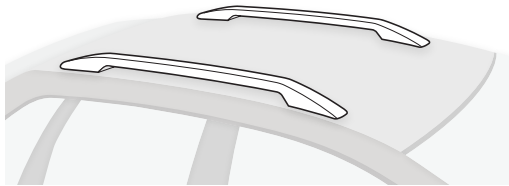
2.1 RAISED RAIL

2.2 SOLID RAIL

SECURES AND ATTACHES TO EITHER SOLID OR RAISED FACTORY RAILS.



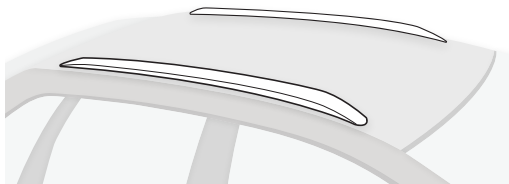
For product numbers and specification, see page 19



2.1.1 STEALTHBAR

Low profile roof rack system consisting of pre-assembled Vortex Bars ready-to-fit for vehicles with raised factory rails.

Leg height: 35mm / 1.4"



2.2.1 VORTEX SX (SOLID OR FLUSH)

Designed to suit vehicles that feature solid rails. Easy to use, this leg includes security hardware to secure your racks. Compatible with Rhino-Rack® Vortex Bars and Euro Bars.
Leg height: 70mm / 2.8"



2.1.3 CXB

Designed for use with roofs that feature rails. Complete with twin bolt tightening to ensure a reliable hold with easy adjustability & security hardware included.

Leg height: 55mm / 2.1"



2.2.2 VORTEX SX (RAISED)

Designed specifically for use with roofs that feature raised rails. Compatible with Rhino-Rack® Vortex and Euro Bars.

Leg height: 55mm / 2.1"



2.1.3 EURO SX

The new and improved Rhino-Rack® Euro bars offer users a low-profile design roof rack available in a variety of pre-cut lengths.

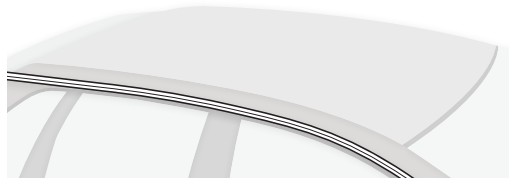
Leg height: 70mm / 2.8"

3.0 GUTTER MOUNT

SECURES AND ATTACHES TO GUTTERS.



For product numbers and specification, see page 19



Some vehicles have integrated strip molds known as gutters where a roof rack system can be mounted offering an integrated look



3.1 SG GUTTER MOUNT LEG

The Vortex SG roof rack system is the system of choice for Jeeps that have protruding side gutters. Easy to install - they are an ideal solution that offers great strength and durability.

Leg height: 110mm / 4.3"

- Made for vehicles with protruding side gutters.
- Features wind noise reducing VGS strips.
- Strong and built to last.
- Stylish flush bars with no overhang.



3.2 RL GUTTER MOUNT LEG

The Rhino-Rack® RL Legs are specially designed heavy duty legs to fit to gutter mounts on a vehicle.

- Compatible with both Vortex and HD overhang Bars.

Leg heights:

110mm / 4.3"

150mm / 5.9"

210mm / 8.3"

280mm / 11.0"

CROSSBAR ROOF RACKS - TECH SPECS



Check your vehicle manufacturer's handbook for your car's on-road and off-road roof load rating.

REF	PART #	SUITS	COL	HEIGHT	ON-ROAD*	OFF-ROAD*	WTY	NOTE
1.0 BARE ROOF MOUNTS								
1.0.1	VA 2500	VA Bars	B	110mm / 4.3"	75kg / 165lbs	37kg / 82lbs	5yrs	Masterkey™ compatible. Compatible with Leg Height Spacers RLKS1 to RLKS5.
1.0.2	HD 2500	HD Bars	B / S	115mm / 4.5"	75kg / 165lb	37kg / 82lbs	Life	Masterkey™ compatible. Compatible with Leg Height Spacers RLKS1 to RLKS5 and HD-FK9 100mm Leg Height Spacer
1.0.3	EURO 2500	EURO Bars	B	115mm / 4.5"	60kg / 132lbs	30kg / 66lbs	Life	Masterkey™ compatible (leg only)
1.0.4	ROC25	VA Bars	B	115mm / 4.5"	60kg / 132lbs	30kg / 66lbs	Life	Masterkey™ compatible.
1.2 FIXED POINT								
1.2.1	ROC25 FMP	VA/HD/ EURO Bars	B	VA 80mm/3.1", HD 85mm/3.3"	75kg / 165lbs	37kg / 82lbs	5yrs	Suits vehicles with factory threaded mounting points within the roof ditch. Masterkey™ compatible.
1.2.2	RCH	VA/HD Bars	B	VA 80mm/3.1", HD 85mm/3.3"	100kg / 220lbs	66kg / 146lbs	5yrs	Overhang style. Requires adapter for HD bar. Masterkey™ compatible
1.2.3	RCL	VA/HD Bars	B	VA 65mm/2.6", HD 70mm/2.8"	100kg / 220lbs	66kg / 146lbs	5yrs	Overhang style. Requires adapter for HD bar. Masterkey™ compatible.
1.2.4	RLTF	VA/HD Bars	B	VA 65mm/2.6", HD 70mm/2.8"	100kg / 220lbs	66kg / 146lbs	5yrs	Overhang style. Requires adapter for VA bar. Masterkey™ compatible
1.2.5	RVH	VA Bars	B	80mm / 3.1"	100kg / 220lbs	66kg / 146lbs	5yrs	Flush design. Masterkey™ compatible
1.2.6	RVL	VA Bars	B	55mm / 2.2"	100kg / 220lbs	66kg / 146lbs	5yrs	Flush design. Masterkey™ compatible
1.3 TRACKS								
1.3.A	RTV	VA/HD Bars	B	RLTP 63mm/2.5", RLTF 93mm/3.7", RLT600 83mm/3.3", RLT500 88mm/3.5"	100kg / 220lbs	66kg / 146lbs	5yrs	Flat bottomed track designed to sit on the roof of a vehicle. Metal application.
1.3.B	RTS	VA/HD Bars	B	RLTP 55mm/2.2", RLTF 85mm/3.3", RLT600 75mm/3", RLT500 80mm/3.1"	100kg / 220lbs	66kg / 146lbs	5yrs	Unique track made for specific vehicles.
1.3.C	RTC	VA/HD Bars	B	RLTP 65mm/2.6", RLTF 95mm/3.7", RLT600 85mm/3.3", RLT500 90mm/3.5"	100kg / 220lbs	66kg / 146lbs	5yrs	Flat bottomed track designed for Truckbed Canopies. Fiberglass application.
1.3 TRACKMOUNT								
1.3.1	RLT600	VA/HD Bars	B / S	HD 75mm/3", VA 70mm/2.8"	100kg / 220lbs	66kg / 146lbs	Life	Compatible with all racks and selected Roof Ditch Brackets. Masterkey™ compatible.
1.3.2	RCH	VA/HD Bars	B	HD 75mm/3", VA 83mm/3.3"	100kg / 220lbs	66kg / 146lbs	5yrs	Compatible with all racks and selected Roof Ditch Brackets. Masterkey™ compatible.
1.3.2	RCL	VA/HD Bars	B / S	HD 75mm/3", VA 83mm/3.3"	100kg / 220lbs	66kg / 146lbs	5yrs	Compatible with all racks and selected Roof Ditch Brackets. Masterkey™ compatible.
1.3.3	RLTF	VA/HD Bars	B / S	50mm - 85mm / 1.9" - 3.3"	100kg / 220lbs	66kg / 146lbs	5yrs	50mm and 85mm Leg heights available. Measured from base of leg to underside of HD crossbar, VA crossbar +10mm.
1.3.3	RLTP	VA/HD Bars	B / S	50mm - 85mm / 1.9" - 3.3"	100kg / 220lbs	66kg / 146lbs	5yrs	50mm and 85mm Leg heights available. Measured from base of leg to underside of HD crossbar, VA crossbar +10mm.
1.3.4	RVH	VA Bars	B	83mm/3.3" + ~track height	100kg / 220lbs	66kg / 146lbs	5yrs	Flush design. Masterkey™ compatible
1.3.4	RVL	VA Bars	B	83mm/3.3" + ~track height	100kg / 220lbs	66kg / 146lbs	5yrs	Flush design. Masterkey™ compatible.

ROOF RACKS - TECH SPECS



Check your vehicle manufacturer's handbook for your car's on-road and off-road roof load rating.

REF	PART #	QTY	SUITS	COL	HEIGHT	ON-ROAD*	OFF-ROAD*	WTY	NOTE
1.4 DITCHMOUNT									
1.4	RVL		VA Bars	B	55mm / 2.2"	100kg / 220lbs	66kg / 146lbs	5yrs	Flush design. Leg suitable for use with Roof Ditch Bracket where no mounting provisions exist on the vehicle. Masterkey™ compatible.
1.4	RVH		VA Bars	B	80mm / 3.1"	100kg / 220lbs	66kg / 146lbs	5yrs	Flush design. Leg suitable for use with Roof Ditch Bracket where no mounting provisions exist on the vehicle. Masterkey™ compatible.
1.4	RCL		VA/HD Bars	B	VA 65mm/2.6", HD 70mm/2.8"	100kg / 220lbs	66kg / 146lbs	5yrs	Flush design. Leg suitable for use with Roof Ditch Bracket where no mounting provisions exist on the vehicle. Masterkey™ compatible.
1.4	RCH		VA/HD Bars	B	VA 80mm/3.1", HD 85mm/3.3"	100kg / 220lbs	66kg / 146lbs	5yrs	Overhang style. Leg suitable for use with Roof Ditch Bracket where no mounting provisions exist on the vehicle. Masterkey™ compatible
1.4	2500 FMP		VA/HD/ EURO Bars	B	Up to 115mm/4.5" using High Base	75kg / 165lbs	37kg / 82lbs	5yrs	Leg suitable for use with Roof Ditch Bracket where no mounting provisions exist on the vehicle.
1.4	RVL		VA Bars	B	55mm / 2.2"	100kg / 220lbs	66kg / 146lbs	5yrs	Flush design. Masterkey™ compatible
2.0 RAIL MOUNT									
2.1.1	Stealth (Raised Rail)		VA Bars	B	35mm / 1.4"	80kg / 176lbs	53kg / 117lbs	5yrs	Flush design. Leg suitable for use with Roof Ditch Bracket where no mounting provisions exist on the vehicle. Masterkey™ compatible.
2.1.2	Vortex SX (Raised Rail)		VA Bars	B	55mm x 2.1"	Refer to note.	Refer to note.	5yrs	Flush design. Leg suitable for use with Roof Ditch Bracket where no mounting provisions exist on the vehicle. Masterkey™ compatible.
2.2.1	Vortex SX (Solid or Flush Rail)		VA Bars	B	70mm x 2.8"	75kg / 165lbs	53kg / 117lbs	5yrs	Flush design. Leg suitable for use with Roof Ditch Bracket where no mounting provisions exist on the vehicle. Masterkey™ compatible.
2.1.3	CXB (Raised Rail)		HD Bars	B	55mm x 2.1"	80kg / 176lbs	53kg / 117lbs	5yrs	Overhang style. Leg suitable for use with Roof Ditch Bracket where no mounting provisions exist on the vehicle. Masterkey™ compatible
2.1.4	EURO SX		EURO Bars	B	70mm / 2.8"	75kg / 165lbs	50kg / 110lbs	5yrs	Leg suitable for use with Roof Ditch Bracket where no mounting provisions exist on the vehicle.
3.0 GUTTER MOUNT									
3.1	SG		Sports Bar	B	110mm / 4.3"	60kg / 132lbs	30kg / 66lbs	Life	110mm height from Roof Gutter to underside of crossbar
3.2	RL		VA/HD Bars	B	110mm-280mm/ 4.3"-11"		66kg / 146lbs	Life	Heights available 110mm, 150mm, 210m, 280mm. Measured from base of leg to underside of HD crossbar, VA crossbar +10mm

* Silver available on HD bars only.

VEHICLE LOAD RATING

There are a number of things to consider when working out your vehicle's load rating, and we want to help you understand the capacity of your racks and vehicle roof. Firstly, different vehicles have different ratings. You need to know the load rating of your vehicle. This information will be easy to find in your vehicle's owner manual.

Secondly, there are a few different load ratings you need to understand. There are on-road and static ratings for all vehicles, as well as off-road ratings for vehicles that can travel off-road.

- **On-road** refers to the load rating of a vehicle when traveling on a sealed road.
- A **static rating** is the load rating of a stationary vehicle, and is necessary if you're using a rooftop tent for example.
- The **off-road** load rating refers to a vehicle traveling on an unsealed road that does not contain a surface protection layer. Sometimes, manufacturers will list the load ratings in the vehicle's Owner Manual, however, you can calculate the off-road load rating yourself using the formula provided in your product fitting instruction.

Lastly, it is important to remember the on-road rating does not take into consideration the weight of the roof racks. According to our instructions, the on-road rating + weight of the racks is called roof allowance. But remember, if you buy an accessory or holder and attach it to your rack or tray, you must also include the weight of these items in the load.

It is very unsafe to overload your vehicle. The "just wing it" approach is not appropriate in this context, and failure to follow the load ratings in each circumstance could result in damage to your vehicle, potential loss of your load, voiding warranty or insurance or cause traffic accidents. It's illegal to overload your vehicle.

To get started calculating your vehicle's load rating, you'll need to make a note of your vehicle's load rating from your vehicle's owner manual as well as the Rhino-Rack Roof Rack system you have installed on your vehicle. Once you have this information you can begin by entering your vehicle details at the below website.



STATIC

When the vehicle is parked or stationary.



ON-ROAD

Driving on paved or sealed roads.



OFF-ROAD

Driving on unsealed or dirt roads.









YOUR ULTIMATE RIG!

RHINO-RACK® BACKBONE

For ultimate performance and looks, the Pioneer platform with a Backbone mounting system is the go-to for your ultimate rig!

The Backbone mounting system is available in unique vehicle designs for a perfect low-profile fit. With bold, solid construction you can be sure it can handle any punishment you give it. The system is also born and proven in Australia for durability in the toughest conditions.



8.0 RHINO-RACK® BACKBONE

THE NEXT LEVEL OF EVOLUTION FOR YOUR 4WD



NISSAN ARMADA



DISCOVERY4



LEXUS GX470



FORD RANGER



LEXUS GX460



TOYOTA LANDCRUISER 100 SERIES



TOYOTA LANDCRUISER LC200



CHEVROLET COLORADO
GMC CANYON



TOYOTA FJ CRUISER



TOYOTA RAV4



JEEP GLADIATOR



JEEP JL WRANGLER



JEEP JK WRANGLER



JEEP JK WRANGLER
W/ BESTOP SUNRIDER



JEEP RENEGADE

8.0 RHINO-RACK® BACKBONE

THE NEXT LEVEL OF EVOLUTION FOR YOUR 4WD



SUBARU CROSSTREK



CHEVROLET SILVERADO GEN 3



GMC SIERRA 1500/2500/3500



CHEVROLET SILVERADO GEN 4



RAM 1500



RAM 2500/3500



FORD F250/F350/F450



TOYOTA 4 RUNNER



TOYOTA TACOMA



TOYOTA TUNDRA

We also make a Rhino-Rack Backbone to suit vehicles such as the GMC Yukon, Cadillac Escalade and the Chevrolet Suburban.



UNIVERSAL BACKBONE

BACKBONE - TECH SPECS

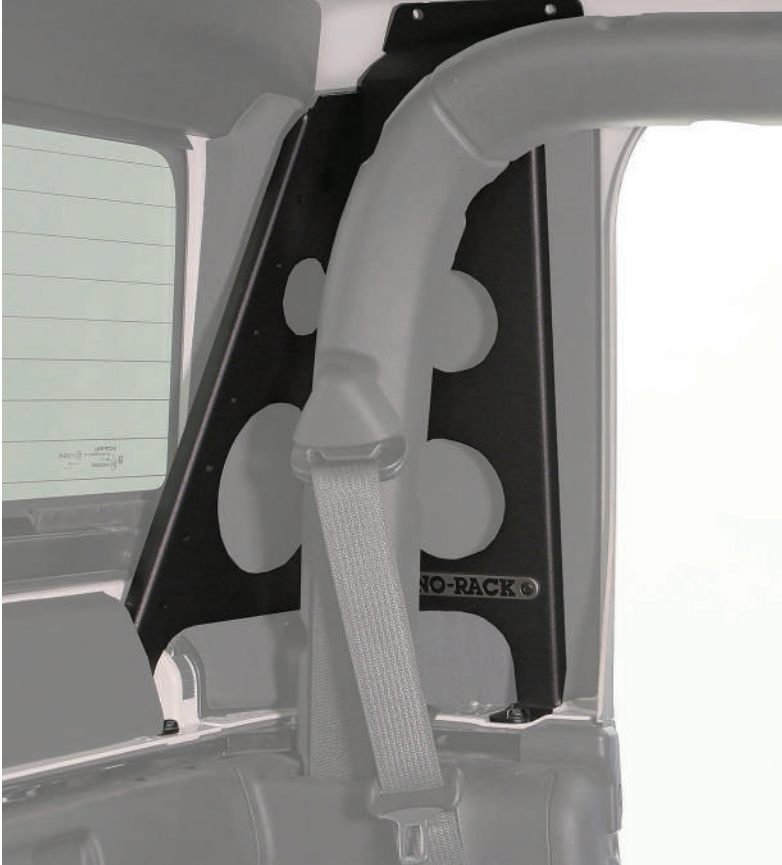
VEHICLE	PART #	SUITS	COMPATIBLE PLATFORM	PLATFORM SIZE	LENGTH	WEIGHT	ADDED VEHICLE HEIGHT (BACKBONE W. PLATFORM)
Chevrolet Colorado 4dr Pick Up Crew Cab 15 To 21	Rccb1	Rivnut	52100	1528mm X 1236mm / 60" X 49"	1312mm	5.9kgs / 13.01lbs	100mm
Chevrolet Colorado 2dr Pick Up Extended Cab 15 To 21	Rccb2	Rivnut	52109	1328mm X 1236mm / 52" X 49"	1054mm	4.8kgs / 10.58lbs	100mm
Land Rover Discovery 3 & 4, 5dr 4wd 04/05 To 06/17	Rd4b1	Factory Points	52107	2128mm X 1236mm / 84" X 49"	2158mm	7.9kgs / 17.42lbs	100mm
Land Rover Discovery 3 & 4, 5dr 4wd 04/05 To 06/17	Rd4b1	Factory Points	52104	2128mm X 1426mm / 84" X 56"	2158mm	7.9kgs / 17.42lbs	100mm
Land Rover Discovery 3 & 4, 5dr 4wd With Factory Tracks Long 04/05 To 06/17	Rd4b1	Factory Points	52107	2128mm X 1236mm / 84" X 49"	2158mm	7.9kgs / 17.42lbs	100mm
Land Rover Discovery 3 & 4, 5dr 4wd With Factory Tracks Long 04/05 To 06/17	Rd4b1	Factory Points	52104	2128mm X 1426mm / 84" X 56"	2158mm	7.9kgs / 17.42lbs	100mm
Land Rover Discovery 3 & 4, 5dr 4wd With Factory Tracks Short 04/05 To 06/17	Rd4b1	Factory Points	52107	2128mm X 1236mm / 84" X 49"	2158mm	7.9kgs / 17.42lbs	100mm
Land Rover Discovery 3 & 4, 5dr 4wd With Factory Tracks Short 04/05 To 06/17	Rd4b1	Factory Points	52104	2128mm X 1426mm / 84" X 56"	2158mm	7.9kgs / 17.42lbs	100mm
Ford F250 4dr Truckbed Super Crew 01/17 To 12/17	Rf2b1	Factory Points	52113	1528mm X 1426mm / 60" X 56"	1401mm	6.1kgs / 13.45lbs	100mm
Ford F250 4dr Truckbed Super Cab 01/17 To 12/18	Rf2b2	Factory Points	52111	1328mm X 1426mm / 52" X 56"	1183mm	5.1kgs / 11.24lbs	100mm
Ford F250 4dr Truckbed Super Crew 01/17 On	Rf2b3	Factory Points	52113	1528mm X 1426mm / 60" X 56"	1401mm	5.32kgs / 11.73lbs	100mm
Toyota Fj Cruiser 2dr Suv 03/11 On	Rfjb1	Factory Points	52107	2128mm X 1236mm / 84" X 49"	2016mm	7.1kgs / 15.65lbs	100mm
Toyota Fj Cruiser 2dr Suv 03/11 On	Rfjb1	Factory Points	52104	2128mm X 1426mm / 84" X 56"	2016mm	7.1kgs / 15.65lbs	100mm
Ford Ranger Px/Px2/Px3 4dr Truckbed Double Cab 10/11 On	Rfrb1	Trackmount	52100	1528mm X 1236mm / 60" X 49"	1388mm	5.32kgs / 11.73lbs	100mm
Jeep Wrangler Jk 4dr 4wd Hard Top 02/11 To 03/19	Rjkb1	Internal Backbone With Casting	52108	1828mm X 1426mm / 72" X 56"	Na	16kgs / 35.27lbs	100mm
Jeep Wrangler Jk 4dr Suv Hard Top 03/07 To 01/11	Rjkb1	Internal Backbone With Casting	52108	1828mm X 1426mm / 72" X 56"	Na	16kgs / 35.27lbs	100mm*
Jeep Wrangler Jk 2dr Suv Hard Top 03/07 To 01/11	Rjkb2	Internal Backbone With Casting	52111	1328mm X 1426mm / 52" X 56"	Na	6.5kgs / 14.33lbs	100mm*
Jeep Wrangler Jk 2dr 4wd Hard Top 02/11 To 03/19	Rjkb2	Internal Backbone With Casting	52111	1328mm X 1426mm / 52" X 56"	Na	6.5kgs / 14.33lbs	100mm*
Jeep Wrangler Jk 4dr Suv Hard Top 03/07 To 01/19 (Compatible With Bestop Tm Sunrider)	Rjkb3	Internal Backbone With Casting	52121	1228mm X 1426mm / 48" X 56"	Na	16kgs / 35.27lbs	100mm*
Jeep Wrangler JI 4dr 02/18 On	Rjlb1	Internal Backbone With Casting	52108	1828mm X 1426mm / 72" X 56"	Na	11.39kgs / 25.11lbs	100mm*
Jeep Renegade Bu 4dr Suv With Roof Rails 15 To 21	Rjrb1	Factory Points	52102	1928mm X 1236mm / 76" X 49"	1866mm	10.4kgs / 22.92lbs	80mm
Jeep Gladiator Jt 4dr Truckbed 06/20 On	Rjtb1	Internal Backbone With Casting	52121	1228mm X 1426mm / 48" X 56"	Na	8.78kgs / 19.36lbs	100mm*
Ram 1500 4dr Truckbed Crew Cab 01/11 On	Rr1b1	Rivnut	52113	1528mm X 1426mm / 60" X 56"	1353mm	6kgs / 13.23lbs	100mm
Ram 1500 Gen5, Dt 4dr Pick Up Crew Cab 19 To 21	Rr5b1	Rivnut	52113	1528mm X 1426mm / 60" X 56"	1404mm	3.8kgs / 8.38lbs	94mm

BACKBONE - TECH SPECS

VEHICLE	PART #	SUITS	COMPATIBLE PLATFORM	PLATFORM SIZE	LENGTH	WEIGHT	ADDED VEHICLE HEIGHT (BACKBONE W. PLATFORM)
Chevrolet Silverado 1500 Gen4 4dr Pick Up Crew Cab 19 To 21	Rr5b1	Rivnut	52113	1528mm X 1426mm / 60" X 56"	1404mm	3.8kgs / 8.38lbs	94mm
Gmc Sierra 1500 Gen4 4dr Pick Up Crew Cab 19 To 21	Rr5b1	Rivnut	52113	1528mm X 1426mm / 60" X 56"	1404mm	3.8kgs / 8.38lbs	94mm
Chevrolet Silverado 1500 Gen3 4dr Pick Up Crew Cab 14 To 19	Rs1b1	Rivnut	52113	1528mm X 1426mm / 60" X 56"	1435mm	5.27kgs / 11.62lbs	100mm
Chevrolet Silverado Hd 4dr Pick Up Crew Cab 15 To 19	Rs1b1	Rivnut	52113	1528mm X 1426mm / 60" X 56"	1435mm	5.27kgs / 11.62lbs	100mm
Gmc Sierra 1500 Gen3 4dr Pick Up Crew Cab 14 To 19	Rs1b1	Rivnut	52113	1528mm X 1426mm / 60" X 56"	1435mm	5.27kgs / 11.62lbs	100mm
Subaru Xv Crosstrek Gen1 5dr Hatch With Roof Rails 13 To 15	Rscb1	Rivnut	52100	1528mm X 1236mm / 60" X 49"	1526mm	7.4kgs / 16.31lbs	100mm
Toyota 4 Runner 4dr Suv With Roof Rails Removed 10 To 20	Rt4b1	Factory Points	52107	2128mm X 1236mm / 84" X 49"	1692mm	6.5kgs / 14.33lbs	100mm
Toyota 4 Runner 4dr Suv With Roof Rails Removed 10 To 20	Rt4b1	Factory Points	52102	1928mm X 1236mm / 76" X 49"	1692mm	6.5kgs / 14.33lbs	100mm
Toyota Land Cruiser 200 Series 4dr 4wd 11/07 On	Rtlb1	Factory Points	52107	2128mm X 1236mm / 84" X 49"	2041mm	9.2kgs / 20.28lbs	85mm
Toyota Land Cruiser 200 Series 4dr 4wd 11/07 On	Rtlb1	Factory Points	52104	2128mm X 1426mm / 84" X 56"	2041mm	9.2kgs / 20.28lbs	85mm
Toyota Land Cruiser 100 Series 4dr 4wd 03/98 To 10/07	Rtlb2	Factory Points	52104	2128mm X 1426mm / 84" X 56"	1807mm	7.2kgs / 15.87lbs	85mm
Toyota Land Cruiser 100 Series 4dr 4wd 03/98 To 10/07	Rtlb2	Factory Points	52103	1928mm X 1376mm / 76" X 54"	1807mm	7.2kgs / 15.87lbs	85mm
Toyota Land Cruiser 200 Series 4dr 4wd 11/07 On	Rtlb3	Factory Points	52100	1528mm X 1236mm / 60" X 49"	1521mm	6.8kgs / 14.99lbs	85mm
Toyota Land Cruiser 200 Series 4dr 4wd 11/07 On	Rtlb3	Factory Points	52101	1528mm X 1376mm / 60" X 54"	1521mm	6.8kgs / 14.99lbs	85mm
Lexus Gx460 5dr Suv 10 On	Rtpb1	Factory Points	52107	2128mm X 1236mm / 84" X 49"	1933mm	7.9kgs / 17.42lbs	87mm
Lexus Gx460 5dr Suv 10 On	Rtpb1	Factory Points	52102	1928mm X 1236mm / 76" X 49"	1933mm	7.9kgs / 17.42lbs	87mm
Lexus Gx470 5dr SUV 03 To 09	Rtpb2	Factory Points	52107	2128mm X 1236mm / 84" X 49"	1800mm	7.6kgs / 16.76lbs	71mm
Lexus Gx470 5dr SUV 03 To 09	Rtpb2	Factory Points	52102	1928mm X 1236mm / 76" X 49"	1800mm	7.6kgs / 16.76lbs	71mm
Toyota Rav4 Gen 5, Xa50 5dr SUV With Flush Rails 05/19 On	Rtrb1	Factory Points	52109	1328mm X 1236mm / 52" X 49"	1173mm	4.23kgs / 9.33lbs	102mm
Toyota Tacoma 4dr Pick Up Double Cab 05 To 22	Rttb1	Factory Points	52100	1528mm X 1236mm / 60" X 49"	1327mm	4.9kgs / 10.8lbs	100mm
Toyota Tundra 4dr Pick Up Crew Max 07 To 21	Rttb2	Rivnuts	52113	1528mm X 1426mm / 60" X 56"	1408mm	5.8kgs / 12.79lbs	100mm
Toyota Tundra 4dr Pick Up Double Cab 07 To 20	Rttb3	Rivnuts	52113	1528mm X 1426mm / 60" X 56"	1367mm	5.5kgs / 12.13lbs	100mm
Mid Size Truck With & Without Tracks	Rumb2	Track Mount / Bolt Through	52100	1528mm X 1236mm / 60" X 49"	1434mm	7.7kgs / 16.98lbs	124mm
Full Size Truck Short Bed With & Without Tracks	Rumb2	Track Mount / Bolt Through	52113	1528mm X 1426mm / 60" X 56"	1434mm	7.7kgs / 16.98lbs	124mm
Full Size Truck Long Bed With & Without Tracks	Rumb1	Track Mount / Bolt Through	52108	1828mm X 1426mm / 72" X 56"	1734mm	9.7kgs / 21.38lbs	124mm

*Vehicle height varies with leg type.





INTRODUCING THE NEW JEEP GLADIATOR JT RHINO-RACK® BACKBONE

For ultimate performance and looks, the Pioneer™ platform with a Backbone mounting system is the go-to for your ultimate rig!

The Backbone mounting system is available in unique vehicle designs for a perfect low-profile fit. With bold, solid construction you can be sure it can handle any punishment you give it. The system is also born and proven in Australia for durability in the toughest conditions

Features

- On roof installation, no canopy removal required.
- Single person installation.
- No measuring required.
- Specifically designed to be used with the Jeep JT Gladiator Pick Up truck.
- Stylish and low profile design.
- Made from strong and durable materials allowing for maximum carrying capacity.
- Black powder coating for increased corrosion resistance.
- Suits Pioneer™ Platform 52121F/42121BF along with Vortex and Heavy Duty Cross Bars.
- 2 hour installation time.
- 5 year warranty.



RHINO-RACK
BACKBONE™

ROOF RACKS TO SUIT THE MOST POPULAR CAP/ TOPPERS AND TRUCKS ON THE MARKET.

Just because you have added a cap/topper on the back of your truck doesn't mean you can't add racks or trays to carry more gear. Choose from our range of leg and bar options or select from our Pioneer™ range. We have all sorts of cleverly designed accessories, legs and spacers to ensure your load is level and safe.



9.0 CAP/TOPPER RACK SYSTEMS

WE HAVE A RANGE OF OPTIONS TO SUIT A VARIETY OF CANOPIES



For product numbers and specification, see page 34



9.1 CAP TOPPER MOUNT

For lighter load situations where utility posts are not required.



9.2 QM CAP/TOPPER MOUNT

Complete with internal backing mounts to fit a Quick Mount™ RLT600 leg onto a cap/topper.



9.3 ARTIFICIAL GUTTER

An ideal product to mount roof racks to a range of cap/toppers.



9.4 UNIVERSAL BACKBONE

RUMB1 & RUMB2

The Rhino-Rack Universal Modular Backbone is a mounting system available in a short and long version to suit a range of Canopies/Cap Toppers. The patented mounting mechanism allows for a modular angular adjustment across a wide range of Canopies/Cap Toppers.





NEED TO LEVEL THINGS OUT?

LEG HEIGHT SPACERS ARE PERFECT FOR CREATING MORE HEIGHT OR LEVELING YOUR ROOF RACK CROSSBARS.

Rhino-Rack® offers a wide variety of leveling spacers that simply connect onto the leg. The spacers can range from 5-30mm in height and fit a wide variety of our legs. They also nest in one another to provide a seamless finish and style to the vehicle.

The roof of a vehicle, as in most cases, has a subtle or dramatic curve from front to rear.

When fitting three or more roof bars to a vehicle there is the challenge of maintaining a level working surface. Roof bars that are not level cause serious problems when loading and unloading, as they do not distribute the weight evenly across the vehicle roof which can become a safety concern.

We have spacers to suit Vortex and Heavy Duty bars.



CAP/TOPPER - TECH SPECS



Check your vehicle manufacturer's handbook for your car's on-road and off-road roof load rating.

REF	PART #	DESCRIPTION	HEIGHT	LENGTH (MM)	BAR TYPE	LEG TYPE	WTY	NOTE
LEG KITS								
9.1	RFMPS	Fixed Mount	70mm / 2.7"	-	HD	RLTP	5yrs	VA Bar requires VA-FK1. High profile design, ideal for highly curved roofs or leveling bars
9.2	RFMC	Rhino Canopy Mount Leg Set	100mm / 3.9"	-	HD	RLTF	5yrs	Suits steel canopies. VA Bar requires VA-FK1
9.3	RFMC2	Fixed Mount	80mm / 3.15	-	HD	RLCP High	5yrs	High profile design, ideal for highly curved roofs or leveling bars; VA BAR REQUIRES VA-FK2.
9.3	RFMPS2	Fixed Mount RLCP Legs Low (2Pcs)	80mm / 3.15"	-	HD	RLCP	5yrs	Suits steel canopies; VA Bar requires VA-FK2. Only to be used with RLT600/RLT600H Legs.
GUTTERS								
9.6	739A	False Gutter Set	18mm / 0.7"	165 mm / 6.5"	HD	RL	3yrs	RL Leg with VA Bar requires VA-FK1.
9.6	739AHALF	False Gutter Set Half	18mm / 0.7"	166 mm / 6.5"	HD	RL	3yrs	VA Bar requires VA-FK1.
TRACK KITS								
	RTC12JW	Jeep Wrangler TJ 2 DR Canopy	551mm / 21.7"	1420mm / 55.9"	VA, HD	RLT600	5yrs	Allows connection to any standard Gutter mount leg.
	RTC12JWMY11	Jeep Wrangler 4 DR Tracks MY011	551mm / 21.7"	1420mm / 55.9"	VA, HD	RLT600	5yrs	Fits Rhino-Rack Vortex onto ARB Truck Posts
	RTC14	Canopy/Truck Track Set 1.4 MTR Black	84mm / 3.3"	1270mm / 50"	VA, HD	RLT600	5yrs	Fits Rhino-Rack Heavy Duty onto ARB Truck Posts.
	RTC16	Canopy/Truck Track Set 1.6 MTR Black	61mm / 2.4"	2019mm / 79.5"	VA, HD	RLT600	5yrs	Fits Rhino-Rack Heavy Duty onto ARB Ascent Canopy Posts
	RTC18	Canopy/Truck Track Set 1.8 MTR Black	61mm / 2.4"	2019mm / 79.5"	VA, HD	RLT600	5yrs	Fits Rhino-Rack Heavy Duty and VA bars onto EGR Canopy Posts.
	RTC8JW	Jeep Wrangler JK 2 DR Removable Roof	56mm / 2.2"	940mm / 37"	VA, HD	RLT600	5yrs	Fits Rhino-Rack Heavy Duty and VA bars onto EGR Canopy Posts.
	RTC8JWMY11	Jeep Wrangler 2 DR TRACKS MY011	56mm / 2.2"	940mm / 37"	VA, HD	RLT600	5yrs	Fits to the factory fitted track supplied with early model TJM Canopies
	RTC95JW	Jeep Wrangler JK 4 DR Removable Roof	551mm / 21.7"	1420mm / 55.9"	VA, HD	RLT600	5yrs	
	RTRL	Track Adapter Suits Rhino RL Legs	74mm / 2.9"	239mm / 9.4"	VA, HD	RLT600	5yrs	
	RTS03	Track Set 1200mm Hilux Dual Cab (PR)	551mm / 21.7"	1420mm / 55.9"	-	-	5yrs	
	RTS502	Track Set for Discovery 3 (PR)	84mm / 3.3"	1679mm / 66.1"	-	-	5yrs	
	RTS502F	Track Set for Discovery 3 Front Bar (PR)	51mm / 2"	259mm / 10.2"	-	-	5yrs	
	RTS507	Track Set Nissan Navara (PR)	551mm / 21.7"	1420mm / 55.9"	-	-	5yrs	
	RTS518	Track Set Hyundai HI Van (PR)	61mm / 2.4"	2400mm / 94.5"	-	-	5yrs	
	RTS527	Track Set Colorado MY2013 (PR)	551mm / 21.7"	1420mm / 55.9"	-	-	5yrs	
	RTS533	Toyota Tundra Track Set Crew Max	551mm / 21.7"	1420mm / 55.9"	-	-	5yrs	
	RTS534	Toyota Tundra Track Set Double Cab	56mm / 2.2"	1209mm / 47.6"	-	-	5yrs	
	RTS540	Track Set LC200 PR	66mm / 2.6"	2029mm / 79.9"	-	-	5yrs	
	RTS547	Toyota Tacoma Track Set	551mm / 21.7"	1420mm / 55.9"	-	RLT600	5yrs	
	RTS551	Range Rover Sport Track Set	551mm / 21.7"	1420mm / 55.9"	-	RLT600	5yrs	
	RTS554	Track Ranger BT50	551mm / 21.7"	1420mm / 55.9"	-	RLT600	5yrs	
	RTV128	RTV Track Set 1280mm Black	551mm / 21.7"	1420mm / 55.9"	-	RLT600	5yrs	
	RTV148	RTV Track Set 1480mm Black	56mm / 2.2"	1699mm / 66.9"	-	-	5yrs	

CAP/TOPPER - TECH SPECS



Check your vehicle manufacturer's handbook for your car's on-road and off-road roof load rating.

REF	PART #	DESCRIPTION	HEIGHT	LENGTH (MM)	BAR TYPE	LEG TYPE	WTY	NOTE
TRACK KITS								
	RTV168	RTV Track Set 1680mm Black	61mm / 2.4"	2019mm / 79.5"			5yrs	
	RTV188	RRTV Track Set 1880mm Black	61mm / 2.4"	2019mm / 79.5"			5yrs	
	RTV208	RTV Track Set 2080mm Black	61mm / 2.4"	2410mm / 94.9"			5yrs	
MOUNTING KITS								
	RFMRL	Cabin Mount	25mm / 1"	215mm / 8.5"	-	RL	5yrs	
	QMCM01	QM Canopy Mount	105mm / 4.1"	-	-	RLT600	5yrs	Only to be used with RLT600/RLT600H Legs.
	QMCM02	QM Canopy Mount	105mm / 4.1"	-	-	RLT600	5yrs	Only to be used with RLT600/RLT600H Legs
	HD-FK9	JB Spacer/Height Adjuster	42mm-100mm / 3.9"-1.65"	-	VA	2500	3yrs	Used in conjunction with 2 x rear truck posts or canopy racks can be cut down.
	RCP52-BK	RFMPC2 Base Kit (2Pcs) Canopy Mount	-	-	VA	RVL, RVH, RCL, RCH	5yrs	
	RCP54-BK	RFMPC2 Base Kit (2Pcs) Canopy Mount	-	-	VA	RVL, RVH, RCL, RCH	5yrs	
	RTC16-FK	Canopy/Truck Track Set 1.6m Fit Kit	-	1600mm / 63"	-	-	5yrs	
	RTRL	Track Adapter Plate	15mm / 0.6"	165mm / 6.5"	HD	RL	5yrs	
POST KITS								
	ARB-AERO	ARB Canopy Post Adapter	10mm / 0.4"	40mm / 1.6"	VA	-	5yrs	Fits Rhino-Rack Vortex onto ARB Truck Posts.
	ARB-HD	ARB Canopy Post Adapter	25mm / 1"	45mm / 1.8"	HD	-	5yrs	Fits Rhino-Rack Heavy Duty onto ARB Truck Posts.
	ARB-ASHD	ARB Canopy Post Adapter	10mm / 0.4"	50mm / 2"	HD	-	5yrs	Fits Rhino-Rack Heavy Duty onto ARB Ascent Canopy Posts.
	EGR-HD	EGR Canopy Post Adapter	-	-	HD	-	5yrs	Fits Rhino-Rack Heavy Duty and VA bars onto EGR Canopy Posts
	EGR-VA	EGR Canopy Post Adapter	2mm / 0.08"	58mm / 2.3"	VA	-	5yrs	Fits Rhino-Rack Heavy Duty and VA bars onto EGR Canopy Posts.
SPACERS / ADAPTERS								
	LHS-A1PAIR	2 x 10mm Leg Height Spacers	10mm / 0.3"	-	VA	RL, RLCP, RLTP, RLTF	5yrs	Incl: 2 x M6 x 45mm Bolts.
	LHS-A2PAIR	4 x 10mm Leg Height Spacers	10mm / 0.3"	-	VA	RL, RLCP, RLTP, RLTF	5yrs	Incl: 2 x M6 x 55mm Bolts
	LHSPAIR	2 x 10mm Leg Height Spacers	10mm / 0.3"	-	HD	RL, RLCP, RLTP, RLTF	5yrs	Incl: 2 x M10 x 35mm Bolts
	LHS2PAIR	4 x 10mm Leg Height Spacers	10mm / 0.3"	-	HD	RL, RLCP, RLTP, RLTF	5yrs	Incl: 2 x M10 x 45 mm Bolts.
	LHSPIV	Pivoting Leg Height Spacer	-	-	VA, HD	RL, RLCP, RLTP, RLTF	5yrs	Incl: 4 Adapters in Kit.
	CXBS1	6mm CXB Spacer Set	6mm / 0.2"	-	HD	CXB	5yrs	
	CXBS2	12mm CXB Spacer Set	12mm / 0.5"	-	HD	CXB	5yrs	
	CXBS3	18mm CXB Spacer Set	18mm / 0.7"	-	HD	CXB	5yrs	
	CXBS4	24mm CXB Spacer Set	24mm / 0.9"	-	HD	CXB	5yrs	

CAP/TOPPER - TECH SPECS



Check your vehicle manufacturer's handbook for your car's on-road and off-road roof load rating.

PART #	DESCRIPTION	HEIGHT	LENGTH (MM)	BAR TYPE	LEG TYPE	WTY	NOTE
RLKS1	2 X 10mm Spacer Blocks	10mm / 0.4"	-	VA	2500	5yrs	
RLKS2	4 X Spacer Blocks Max Height 18mm	18mm / 0.7"	-	VA	2500	5yrs	
RLKS3	6 X Spacer Blocks Max Height 26mm	26mm / 1"	-	VA	2500	5yrs	
RLKS3	8 X Spacer Blocks Max Height 34mm	34mm / 1.3"	-	VA	2500	5yrs	
RLKS5	10 X Spacer Blocks Max Height 42mm	42mm / 1.7"	-	VA	2500	5yrs	
QMHD05	4 X Spacer Blocks Max Height 5mm	5mm / 0.2	-	HD		5yrs	
QMVA05	5mm VA Spacer	5mm / 0.2	-	VA		5yrs	
QMW05	Quick Mount Base Wedge 5mm (PR)	5mm / 0.2	-	-		5yrs	
QMHD10	4 X Spacer Blocks Max Height 10mm	10mm / 0.4"	-	HD		5yrs	
QMVA10	10mm VA Spacer	10mm / 0.4"	-	VA		5yrs	





ALL NEW PIONEER™ PLATFORM

- 40. Pioneer™ Leader Of The Rack
- 43. The ALL NEW Pioneer™
- 44. Mounting Options
- 46. Pioneer™ Systems
- 48. Pioneer™ Set-Ups
- 50. Pioneer™ - Tech Specs
- 52. Rhino-Rack Stow It
- 53. Pioneer™ Accessories
- 62. Pioneer™ Accessories - Tech Specs



📍 EMERALD ISLE, NORTH CAROLINA





PIONEER™

LEADER OF THE RACK

DON'T TRAVEL THE PATH OF ANOTHER. PIONEER™ YOUR OWN.

In 2010 Rhino-Rack® changed the way you carry gear on-road and off-road with the introduction of the Pioneer™ Platform. In 2020 the legend continues with the introduction of the All New Pioneer™ – truly the leader of the rack.

The All New Pioneer™ is the most versatile & modular platform on the market with over 90 accessories for maximum customization.

From serious overlanding adventures, to loading gear from the worksite, or just making sure your sporting equipment arrives safe - Rhino-Rack® Pioneer™ Systems have got it covered.



All NEW Pioneer



reddot winner 2021

**PIONEER™
PLATFORM RECEIVES
INTERNATIONALLY
RENOWNED RED DOT
AWARD: PRODUCT
DESIGN 2021**

We are proud to announce that our 'Pioneer™ Platform' has received the Red Dot Award: Product Design 2021. The "Red Dot" is an internationally recognized and sought-after seal that is given to products that feature an outstanding design.

The international jury only awards this sought-after seal of quality to products that feature an outstanding design. This is a great recognition and well-earned reflection of the amazing work by the Rhino-Rack

team. This auspicious award confirms the importance of having a robust Product Development Process that encapsulates the various inputs from market research, consumer insights, patent searches, ease of assembly and many more inputs that result in the release of world class products.

THE ORIGINAL. THE BEST.

Designed to make it easier for you, the Rhino-Rack® Pioneer™ range was another world first for Rhino-Rack®. Made from aluminum and fiberglass re-enforced nylon the Pioneer™ range is lightweight and strong, durable enough to endure any environment and flexible enough to carry almost anything. Don't be fooled by cheap imitations or products made of steel, these will just cost you more in the long run and are bound to let you down.



**PIONEER™ PLATFORM
TAKES TOP OF THE
PODIUM IN THE
INTERNATIONAL
GOOD DESIGN AWARDS**



We are proud to announce that our 'Pioneer™ Platform' has received the prestigious Good Design Award Gold Accolade in Australia's 2020 International Good Design Awards.

As one of the oldest and most prestigious international design awards in the world since 1958, the gold accolade, also known as the Good Design Tick, is

among the most respected and recognized international design endorsement symbols in the industry. With this accolade, consumers can be assured that the Pioneer™ Platform has been professionally designed to the highest standards and evaluated through rigorous testing and processes.



INTRODUCING THE ALL NEW PIONEER™

Features:

- Made from aluminum and fiberglass re-enforced nylon corners
- Black powder coated for increased corrosion resistance
- The most versatile and modular platform on the market
- Faster installation time with an integrated measuring strip
- Additional accessory channels on front and rear extrusions
- Integrated wiring capabilities within all extrusions
- Corners can be drilled/cut out to provide access to wiring
- Full range of Pioneer™ Platform Accessories**
- Included torque limiting tool ensures fasteners are properly tightened and makes regular maintenance easy
- Integrated channel on the underside of the front & rear extrusions offers additional mounting points for light bars, pod lights, and other accessories
- North/South running planks for streamlined-look and ease of cargo loading



Integrated Front & Rear Channel

Accessory channels in the front and rear extrusions, allow for additional accessory mounting.



Integrated Front Channel

The underside channels in the front and rear allow for the mounting of lights and other accessories.



Underbar Measuring Strip

Underbars can now easily be positioned using the measuring strip and position locator.



Corners

Easy access to the internal channels of the front and rear extrusions for integrated wiring capabilities.

MOUNTING OPTIONS

To ensure we continue to offer our users the best solution on the market the ALL NEW Pioneer™ continues its legacy with its compatibility with our industry leading mounting systems. The integrated underbars on the ALL NEW Pioneer™ now mount directly with our SX Legs. Please check vehicle user manual for your vehicle's load carrying capacity.



Backbone



RLT600



RCH & RCL



SX (Sports Bar)



RL (Gutter Mount)



10.0 PIONEER™ SYSTEMS

LIGHTWEIGHT, STRONG, AND DURABLE ENOUGH FOR ANY ENVIRONMENT AND ADAPTABLE ENOUGH TO CARRY ALMOST ANYTHING.



For product numbers and specification, see page 50



10.1 ALL NEW PIONEER™ PLATFORM

- Stylish low-profile design
- Made from aluminum with fiberglass re-enforced nylon corners
- Black powder coated for increased corrosion resistance
- The most versatile and modular platform on the market
- Integrated channel on the underside of the front and rear extrusion offer additional mounting points for accessories



10.2 UNIVERSAL PIONEER™ PLATFORM

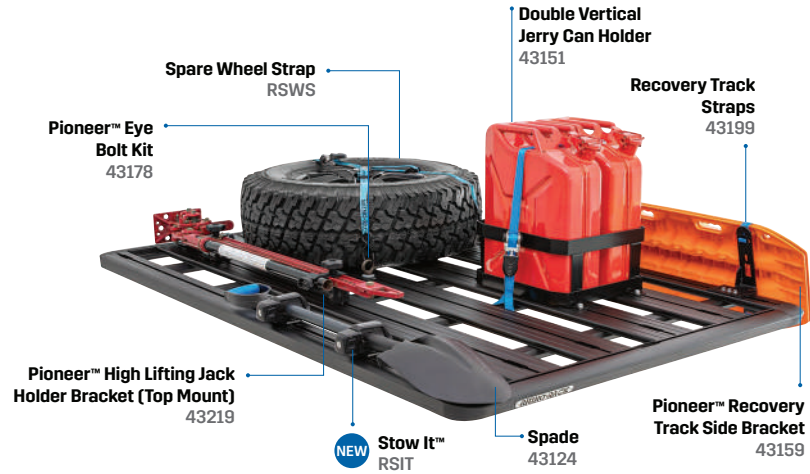
- Universal clamping system suits the most popular roof racks on the market.
- Low clearance.
- Easy assembly.
- Corrosion resistant black powder coating finish.
- Optional rail systems available soon.
- Full range of accessories to suit.



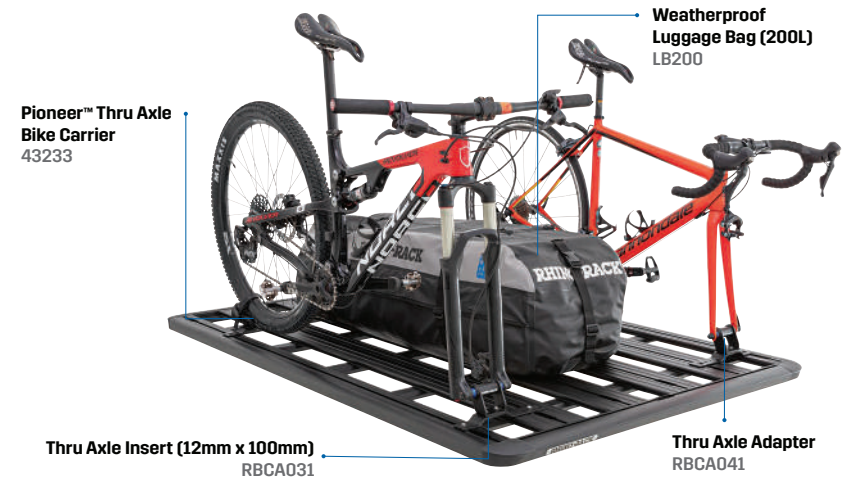
PIONEER™ ADVENTURE SETUPS



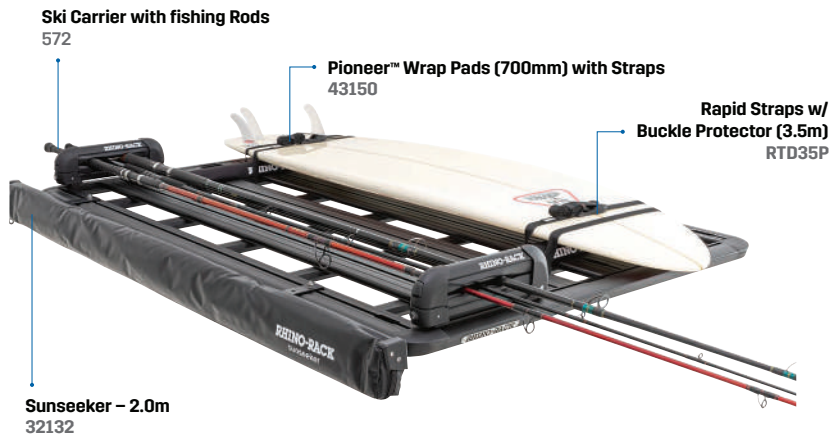
FOR OVERLANDING



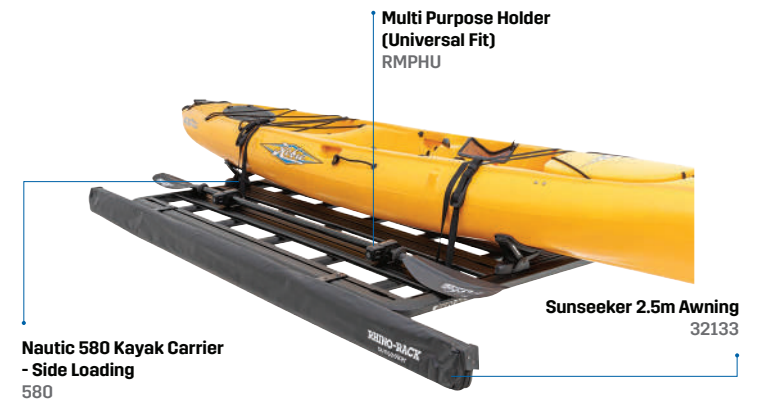
FOR THE CYCLIST



FOR THE SURFER & FISHER



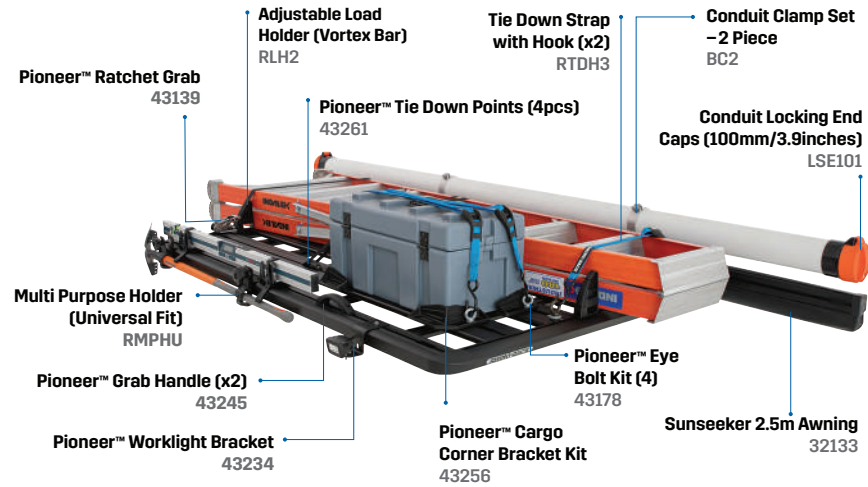
FOR THE WATER



PIONEER™ ADVENTURE SETUPS



FOR THE CONTRACTORS



FOR THE CAMPER



FOR THE SKIERS



PIONEER™ - TECH SPECS



Check your vehicle manufacturer's handbook for your car's on-road and off-road roof load rating.

REF	DESCRIPTION	PART #	SIZE (EXTERNAL)	WEIGHT
10.1	Platform	52100F	1528 x 1236mm / 61" x 48"	17.5kg / 38.57lbs
10.1	Platform	52101F	1528 x 1376mm / 61" x 54"	20.5kg / 45.182lbs
10.1	Platform	52113F	1528 x 1426mm / 61" x 57"	30.0kg / 66.14lbs
10.1	Platform	52102F	1928 x 1236mm / 76" x 48"	24.0kg / 53.998lbs
10.1	Platform	52103F, 44103BF	1928 x 1376mm / 76" x 54"	27.0kg / 46.284lbs
10.1	Platform	52104F	2128 x 1426mm / 84" x 56"	30.0kg / 66.12lbs
10.1	Platform	52105F	2728 x 1465mm / 107" x 58"	38.5kg / 84.854lbs
10.1	Platform	52107F	2128 x 1236mm / 84" x 48"	24.5kg / 53.998lbs
10.1	Platform	52108F	1828 x 1426mm / 72" x 56"	25.5kg / 56.202lbs
10.1	Platform	52109F	1328 x 1236mm / 52" x 48"	16.0kg / 35.264lbs
10.1	Platform	52110F	1328 x 1376mm / 52" x 54"	18.0kg / 39.672lbs
10.1	Platform	52111F	1328 x 1426mm / 52" x 56"	19.5kg / 42.978lbs
10.1	Platform	52112F	928 x 1426mm / 36" x 56"	14.5kg / 31.958lbs
10.1	Platform	52119F	2528 x 1586mm / 99" x 62"	40.0kg / 88.16lbs
10.1	Platform	52120F	1524 x 1575mm / 60" x 62"	24.3kg / 53.6lbs
10.1	Platform	52121F	1228 x 1426mm / 48" x 56"	20.2kg / 44.5lbs
10.2	Universal Platform	42115BF	1478 x 1184mm / 58" x 46"	17.0kg / 37.468lbs
10.2	Universal Platform	42114BF	1228 x 952mm / 48" x 37"	12.0kg / 26.448lbs





EXPLORE WITH MORE

The award winning STOW iT utility holder has some new members of the family. We have extended the range to create the ultimate range of customizable, easy to use, quick access accessory systems.

Spend less time packing and more time enjoying your adventure with the NEW STOW iT mounting System. This system is simple and easy to use, featuring one base bracket that is compatible across a range of interchangeable adapters, allowing you to quickly mount your favorite STOW iT accessories.

How does the STOW iT mounting system work?

Start your journey with the STOW iT starter kit, which includes the STOW iT Base bracket and Universal adapter. The STOW iT base bracket mounts directly to your Pioneer platform or Crossbar and is the core product of this mounting system, allowing you to easily change the adapter to suit your accessory needs.

STOW iT COMPATIBLE SYSTEM

Look for this icon for STOW iT system compatible adapters and accessories



Mount the STOW iT Base Bracket to your Pioneer System



Attach the STOW iT Adapter of choice to the Base Bracket



Attach your STOW iT Compatible accessory holder

10.1 STOW IT MOUNTING SYSTEM

The STOW iT Mounting system allows you to mount, remove and reposition your favorite accessories with ease to your Pioneer platform.

NEW



10.1.1 STOW-iT STARTER KIT

SSIT

Begin your journey with the STOW iT starter kit which includes the STOW iT base bracket, universal adapter and the patented Rhino-Rack SWIFTLOC™ hardware.

The universal adapter included in this kit allows you to mount your favorite Rhino-Rack accessories including the Rhino-Rack sunseeker and STOW iT utility holder.

No more sliding channel nuts, no more moving accessories to access space, with the SWIFTLOC™ you can drop in and tighten your accessory in place.



SWAP OUT YOUR UNIVERSAL ADAPTER FOR A RANGE OF INTERCHANGEABLE STOW IT SYSTEM ADAPTERS

Each compatible with STOW iT base bracket, sold separately.

NEW



10.1.2 STOW-iT ROLLER ADAPTER

OSIT

The STOW iT roller adapter is easy to adjust to different lengths of rollers and is compatible with Rhino-Rack range LR rollers.

NEW



10.1.3 STOW-iT LIGHT BAR ADAPTER

ISIT

Allows you to mount your LED and light bars quickly to your Pioneer or crossbar. The adapter is easy to adjust to different lengths.

NEW



10.1.4 STOW-iT BATWING ADAPTER

BSIT

Mount your Rhino-Rack Batwing with ease using the STOW iT Batwing adapter. Suitable for most 270-degree awnings.



RHINO-RACK

RHINO-RACK

ALL ADVENTURE

11.0 PIONEER™ ACCESSORIES

TRANSPORTING YOUR GEAR SAFELY IS OUR PASSION. CHECK OUT OUR FULL RANGE OF ACCESSORIES.



For product numbers and specification, see page 62



11.1 PIONEER™ ACCESSORY BAR

43232B, 43119B, 43120B, 43137B, 43138B

This accessory bar allows accessories to be attached to the Rhino-Rack Pioneer™ Platforms.



11.2 RATCHET GRAB

43139

The Pioneer™ Ratchet Grab is an ideal system for securing cargo boxes to your Pioneer™ Platform.



11.3 MULTI-PURPOSE HOLDER

53100

Made from stainless steel and powder coated to resist corrosion to withstand the harshest weather conditions.



11.4 STOW IT

RSIT

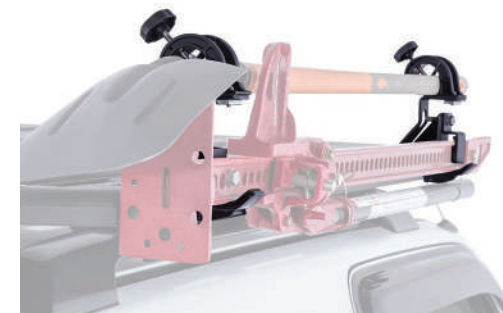
Convenient quick close and release load carrying solution for your shovel and other equipment.



11.5 HIGH LIFTING JACK BRACKET

43101

Secure and lock your High Lifting Jack in place with our strong, durable and corrosion resistant powder coated steel bracket.



11.6 HIGH LIFTING JACK AND SHOVEL BRACKET KIT

43157

This kit allows you to fit a shovel and high lifting jack to one side of your Pioneer™.

11.0 PIONEER™ ACCESSORIES

TRANSPORTING YOUR GEAR SAFELY IS OUR PASSION.
CHECK OUT OUR FULL RANGE OF ACCESSORIES.



For product numbers and
specification, see page 62



11.7 EYE BOLT KIT

43178

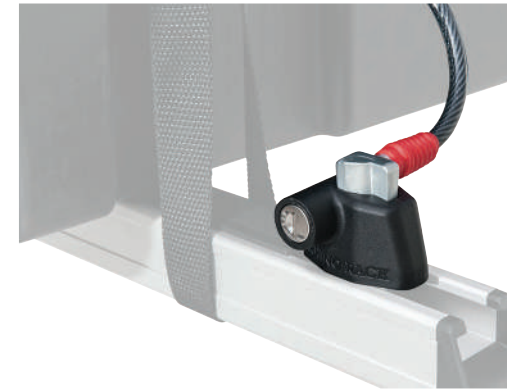
Designed to aid in carrying heavy loads
on your Rhino-Rack® Pioneer™ System.



11.8 CORNER BRACKETS

43256

Cargo Corners have been designed to
provide users with a secure and adaptable
anchor point for large bulky items.



11.9 CABLE CORE LOCKDOWN

43205, 43206, 43207, 43208, 43209, 43210

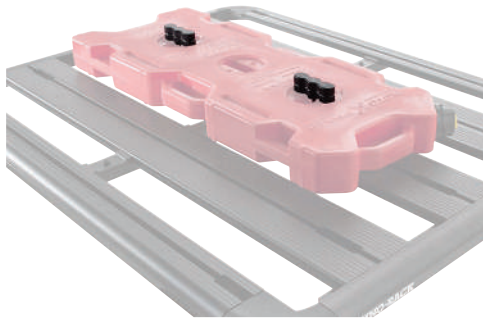
Ergonomically designed to suit a wide
range of crossbar brands and simple
to install with the supplied Allen key.



11.10 RECOVERY TRACK FLAT BRACKET

43235

Secures recovery tracks on your
Rhino-Rack® Pioneer™ Systems.



11.11 ROTOPAX FIT KIT

43203

The Pioneer™ Rotopax fit kit allows you
to mount your Rotopax onto the range
of Rhino-Rack® Pioneer™ systems.



11.12 WRAP PADS

43150

The Pioneer™ Wrap Pads are used to
provide protection for both your gear
and the Pioneer™ system.

11.0 PIONEER™ ACCESSORIES

TRANSPORTING YOUR GEAR SAFELY IS OUR PASSION. CHECK OUT OUR FULL RANGE OF ACCESSORIES.



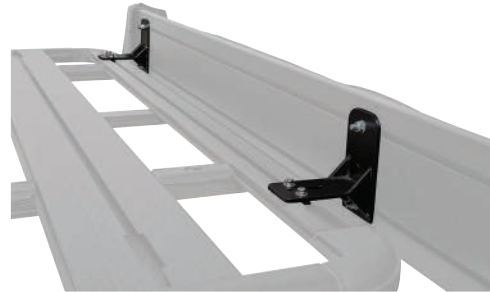
For product numbers and specification, see page 62



11.13 LUGGAGE BAGS

LB200, LB250, LB350, LB500

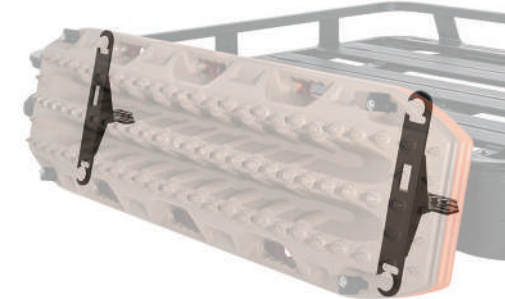
The ideal solution for carrying your bulky light weight gear while on the road.



11.14 AWNING BRACKETS

43259

Made from powder coated steel, these brackets are corrosion resistant and built to last.



11.15 PIONEER™ RECOVERY TRACK SIDE BRACKET

43159, 43197

Mounts recovery tracks at a 75° angle to all Rhino-Rack® Pioneer™ systems.



11.16 PIONEER™ WIND FAIRING

43249, 43250, 43251

The Rhino-Rack Wind Fairing has been engineered to reduce the wind noise as it deflects the air around your load minimizing whistle while driving.

- Adjustable longitudinal movement
- UV resistant with sturdy 4mm thick ABS construction
- Soft Santoprene rubber feet
- Does not interfere with the usable space on the Pioneer™ system
- 5 year warranty

Note: ONLY fits older generation Pioneer™ Platform. Not compatible with the All New Pioneer.

11.0 PIONEER™ ACCESSORIES

TRANSPORTING YOUR GEAR SAFELY IS OUR PASSION.
CHECK OUT OUR FULL RANGE OF ACCESSORIES.



For product numbers and
specification, see page 62



11.17 RATCHET PICKUP KIT

43175, 43179

Allows you to strap down items to your Pioneer™ system very quickly and easily.



11.18 LIGHT BRACKETS

43156, 43173

Built to secure your lights for work and adventure.

Note: ONLY fits older generation Pioneer™ Platform.



11.19 JERRY CAN HOLDERS

43107, 43108, 43151, 43152

A space conscious resolution to your jerry can needs allowing two cans to be transported easily.



11.20 GAS BOTTLE HOLDER

RGBH4

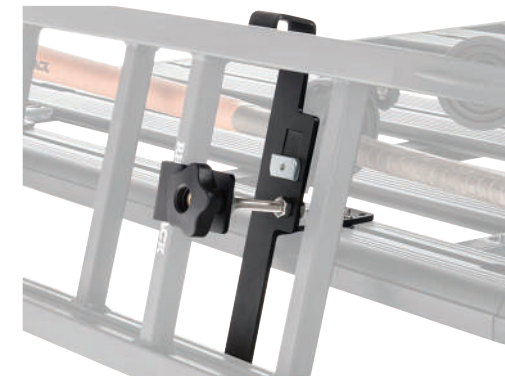
Designed to securely fit most 4.0L gas bottles on the market.



11.21 RHINO SPARE WHEEL STRAP

RSWS

Securely fasten your spare wheel to our range of Pioneer™ Trays and Platforms.



11.22 ALUMINUM FOLDING LADDER BRACKET

RUFLB

Attach your Rhino-Rack® Aluminum Folding Ladder to any Pioneer™ system.

11.0 PIONEER™ ACCESSORIES

TRANSPORTING YOUR GEAR SAFELY IS OUR PASSION.
CHECK OUT OUR FULL RANGE OF ACCESSORIES.



For product numbers and
specification, see page 62



11.23 RHINO-RACK® WHEEL STEP

RWS

A safe and effective way to load and
unload the gear mounted on your 4WD's
roof.



11.24 RHINO-RACK® STEEL SHOVEL

43123

A square mouth shovel with a Stainless
Steel 304 Blade.



11.25 RHINO-RACK® SPADE

43124

Perfect for getting under bogged vehicles.



11.26 PIONEER GRAB HANDLE (x2)

43245

The Pioneer Grab Handle is designed to
aid in loading, unloading and securing
your gear on to your Rhino-Rack Pioneer
System. They can also be used as a strong
anchor point to secure gear to the roof.



11.27 PIONEER ROOF TOP TENT BRACKET KIT

53101

Made with pre-cut mounting holes, the
Pioneer Roof Top Tent Bracket Kit allows
for easy installation of your roof top tent to
your Pioneer Platform. The kit includes 4x
mounting brackets and hardware to suit.



11.28 VORTEX AERIAL BRACKET

S613

The Vortex Aerial Bracket is used to attach
a standard aerial to your Rhino-Rack
Vortex bar.

11.0 PIONEER™ ACCESSORIES

TRANSPORTING YOUR GEAR SAFELY IS OUR PASSION.
CHECK OUT OUR FULL RANGE OF ACCESSORIES.



11.29 PIONEER™ LADDER MOUNT

43217

Allows you to use the Aluminum Folding Ladder on your Pioneer™ system.



11.31 ALUMINUM FOLDING LADDER

RAFL

The Aluminum Folding Ladder connects to the edge of your Pioneer™ Systems using a specific mounting bracket fixed with bolts for added stability. The mounting bracket can be installed on any side of the vehicle as desired. The ladder unfolds at an angle to prevent contact with your vehicle. Constructed from Aluminum with a black powder coat finish, the Aluminum Folding Ladder is built strong to last.

Features:

- For use with Rhino-Rack® Pioneer™ Systems.
- Alloy construction with cast steel hinges.
- Wide feet (70mm/2.7") are perfect for use on soft ground.
- Adjustable feet extend to 325mm (19.7") to ensure stability on uneven ground.
- Maximum ladder length 2325mm (91.5"). Ladder folds to 1060mm (41.7").
- Maximum load rating of 125kg (275lb).
- Mounting brackets and hardware included.
- Additional brackets sold separately (#43217, #RUFLB)



11.30 CONDUIT LOCKING END CAPS FOR SCHEDULE 40 PVC PIPES

A conduit locking end cap designed to provide maximum security with our built in Masterkey compatible steel locks.

11.1 PIONEER™ SIDE RAILS

OPTIONAL SIDE RAILS ALLOW YOU TO CONFIGURE YOUR PLATFORM IN THE BEST WAY TO SUIT YOUR LOAD.

New Pioneer Platform Side Rails are versatile and sturdy side rails that enable increased security for transporting your gear. The New Side Rail Kit is designed to allow flexibility when configuring your mounting on your Pioneer Platform. These new rails are designed to fit in the C-Channel to best suit your load carrying needs. Whether you are on road or off it, Rhino-Rack keeps your gear secure. Each kit contains 2 rail extrusions, cast end legs and glass reinforced nylon support feet.

Designed and tested in Australia to help secure your load on the Rhino-Rack Pioneer™ Platform.

Suitable for the 52100, 52101, 52102, 52103, 52104, 52105, 52107, 52108, 52109, 52110, 52111, 52112, 52113 and 52120 Pioneer Platforms.

- Multi configuration
- Aerodynamically designed
- Non-Corrosive
- Strong and Durable
- Easy access tie off points
- Quick and easy to fit
- Available in 7 sizes to suit Pioneer Platform sizes
- Includes 2 x Rails to mount onto the side of your Pioneer Platform
- 3 year warranty



PART #	PRODUCT	DIMENSIONS (LxWxD)	WEIGHT
53140	Pioneer Side Rails (Suits 1528mm Length Platform)	1190 x 175 x 93mm / 46.8" x 6.8" x 3.6"	2.6kg / 5.7lbs
53141	Pioneer Side Rails (Suits 2128mm Length Platform)	1790 x 175 x 93mm / 70.4" x 6.8" x 3.6"	3.7kg / 8.1lbs
53142	Pioneer Side Rails (Suits 2728mm Length Platform)	2380 x 155 x 87mm / 93.7" x 6.1" x 3.4"	4.4kg / 9.7lbs
53144	Pioneer Side Rails (Suits 1928mm Length Platform)	1590 x 175 x 93mm / 62.6" x 6.8" x 3.6"	3.5kg / 7.7lbs
53145	Pioneer Side Rails (Suits 1828mm Length Platform)	1490 x 175 x 93mm / 58.6" x 6.8" x 3.6"	3.4kg / 7.4lbs
53146	Pioneer Side Rails (Suits 1328mm Length Platform)	990 x 175 x 93mm / 38.9" x 6.8" x 3.6"	2.4kg / 5.3lbs
53147	Pioneer Side Rails (Suits 928mm Length Platform)	580 x 155 x 87mm / 22.8" x 6.1" x 3.4"	2kg / 4.4lbs

Rails can be mounted to all planks in any location with our "C" channel mounting system.



PIONEER™ ACCESSORIES - TECH SPECS



Check your vehicle manufacturer's handbook for your car's on-road and off-road roof load rating.

REF	PRODUCT	PART #	SUITS	QTY	DIM	WTY	WEIGHT	NOTE
11.1	Pioneer™ Accessory Bar	43232B	52107, 52100, 52109, 52102, 52104, 45104B, 45100B, 45102B, 45109B, 45107B	2	610mm / 24"	3yrs	1.5kg / 3.3lbs	Accessory Bar attaches to the 'C' Channel.
11.1	Pioneer™ Accessory Bar	43119B	52100, 52102, 52107, 52109, 45100B, 45102B, 45107B, 45109B,	2	1220mm / 48"	1yr	3.2kg / 7.1lbs	Accessory Bar attaches to the 'C' Channel.
11.1	Pioneer™ Accessory Bar	43120B	52101, 52103, 52104, 42105B, 52108, 52110, 42111B, 42112B, 45101B, 45103B, 45104B, 45108B, 45110B, 45111B	2	1360mm / 53"	1yr	3.6kg / 7.9lbs	Accessory Bar attaches to the 'C' Channel.
11.1	Pioneer™ Accessory Bar	43137B	52100, 52102, 52107, 52109, 45100B, 45102B, 45107B, 45109B	2	1220mm / 48"	3yrs	3.3kg / 7.3lbs	VA Bar accessories. Attaches into the 'C' Channel.
11.1	Pioneer™ Accessory Bar	43138B	52101, 52103, 52104, 42105B, 52108, 52110, 42111B, 42112B, 45101B, 45103B, 45104B, 45108B, 45110B, 45111B	2	1360mm / 53"	3yrs	3.7kg / 8.2lbs	VA Bar accessories. Attaches into the 'C' Channel
11.2	Ratchet Grab	43139	Pioneer™	1		1yr	1.2kg / 2.6lbs	
11.3	Multi-Purpose Holder Bracket	53100	Pioneer™ / Sunseeker	2	74.4mm x 92mm x 69mm / 2.9" x 3.6" x 2.7"	3yrs	0.5kg / 1.1lbs	
11.4	Stow It	RSIT	Pioneer™ / VA Bars	2	28-37mm / 1.1"-1.5" grip diameter range	3yrs	1.4kg / 3.1lbs	
11.5	High Lifting Jack Bracket	43101	Pioneer™	1	310mm x 180mm x 80mm / 12.2" x 7.1" x 3.1"	3yrs	1.7kg / 3.7lbs	
11.6	High Lifting Jack / Shovel Holder	43157	Pioneer™	1	250mm x 165mm x 90mm / 9.8" x 6.5" x 3.5"		2.7kg / 6lbs	
11.7	Eye Bolt Kit	43178	Pioneer™	4	60 x 65mm	1yr	0.9kg / 2lbs	
11.8	Corner Brackets	43256						
11.9	Cable Core Lockdown 0.6m	43205	Pioneer™/VA	1	0.6m / 1'11"	3yrs	0.3kg / 0.7lbs	8mm (1/3") PVC coated steel wire with zinc protection.
11.9	Cable Core Lockdown 1.2m	43206	Pioneer™/VA	1	1.2m / 3'11"	3yrs	0.35kg / 0.77lbs	8mm (1/3") PVC coated steel wire with zinc protection
11.9	Cable Core Lockdown 1.8m	43207	Pioneer™/VA	1	1.8m / 5'11"	3yrs	0.4kg / 0.9lbs	8mm (1/3") PVC coated steel wire with zinc protection
11.9	Cable Core Lockdown 0.6m	43208	HD Bar	1	0.6m / 1'11"	3yrs	0.3kg / 0.7lbs	8mm (1/3") PVC coated steel wire with zinc protection
11.9	Cable Core Lockdown 1.2m	43209	HD Bar	1	1.2m / 3'11"	3yrs	0.4kg / 0.9lbs	8mm (1/3") PVC coated steel wire with zinc protection
11.10	Recovery Track Flat Bracket	43235	Pioneer™	2	380mm x 105mm x 105mm / 15" x 4.1" x 4.1"	3yrs	1.92kg / 4.23lbs	
11.11	Pioneer™ Rotopax Fit Kit	43203	Pioneer™	1	NA	3yrs	0.2kg / 0.5lbs	
11.12	Wrap Pad	43150	Pioneer™	2	700mm / 27.6"	1yr	0.7kg / 1.5lbs	



PIONEER™ ACCESSORIES - TECH SPECS



Check your vehicle manufacturer's handbook for your car's on-road and off-road roof load rating.

REF	PRODUCT	PART #	SUITS	QTY	DIMENSIONS	WTY	WEIGHT	NOTE
11.13	Weatherproof Luggage Bag (200L)	LB200	Basket / Alloy Tray / Pioneer		1400 x 500 x 300mm / 55.1" x 19.7" x 11.8"	1yr	3kg / 6.6lbs	Material: poly canvas tarpaulin. Not to be attached directly to crossbars or directly to the roof.
11.13	Weatherproof Luggage Bag (250L)	LB250	Basket / Alloy Tray / Pioneer		1100 x 800 x 300mm / 43.3" x 31.5" x 11.8"	1yr	3.2kg / 7.1lbs	Material: poly canvas tarpaulin. Not to be attached directly to crossbars or directly to the roof.
11.13	Weatherproof Luggage Bag (350L)	LB350	Basket / Alloy Tray / Pioneer		1200 x 960 x 300mm / 47.2" x 37.8" x 11.8"	1yr	3.9kg / 8.6lbs	Material: poly canvas tarpaulin. Not to be attached directly to crossbars or directly to the roof.
11.13	Weatherproof Luggage Bag (500L)	LB500	Basket / Alloy Tray / Pioneer		1500 x 1100 x 300mm / 59" x 43.3" x 11.8"	1yr	5kg / 11lbs	Material: poly canvas tarpaulin. Not to be attached directly to crossbars or directly to the roof.
11.14	Awning Bracket	43259	Pioneer™	2	120 x 60 x 140mm / 4.7" x 2.4" x 5.5"	3yrs	0.8kg / 1.8lbs	Hole distance 100mm
11.15	Pioneer Recovery Track Side Bracket	43159	Pioneer™	2	320mm / 12.6" in length	3yrs	2.2kg / 4.9lbs	When fitting 3 or 4 tracks, the Pioneer Recovery Support Bracket Part No: 43197 is required. Not suitable for the 45100, 41100, 45101
11.16	Wind Fairing	43249	Pioneer™	1	1130mm / 44"	5yrs		Not suitable for all new Pioneer range.
11.16	Wind Fairing	43250	Pioneer™	1	1272mm / 50"	5yrs		Not suitable for all new Pioneer range.
11.16	Wind Fairing	43251	Pioneer™	1	1332mm / 52"	5yrs		Not suitable for all new Pioneer range.
11.16	Wind Fairing	RF4	Vortex Bar	1	1270mm / 50"	5yrs		
11.16	Wind Fairing	RF3	Vortex Bar	1	1118mm / 44"	5yrs		
11.16	Wind Fairing	RF2	Vortex Bar	1	965mm / 37.9"	5yrs		
11.16	Wind Fairing	RF1	Vortex Bar	1	813mm / 32"	5yrs		
11.17	Pioneer Pick Up Kit	43175	Pioneer™	2	1.8m / 70.9" strap length	1yr	1kg / 2.2lbs	Lashing Capacity 225kg/496lb
11.17	Cam Buckle Pick Up Kit	43179	Pioneer™	2	2.2m / 86.6" strap length	1yr	0.7kg / 1.5lbs	Lashing Capacity 225kg/496lb
11.18	Light Bracket Kit	43156	Pioneer™	3	1 X LED Bar / 2X SPOT - 300mm x 105mm x 44.5mm / 11.8" x 4.1" x 1.8"	3yr	1.9kg / 4.2lbs	Holds 1 LED bar / 2x spot
11.18	LED Light Bracket	43173	Pioneer™	3	175 x 100 x 50mm / 6.8" x 3.9" x 1.9"	3yr	1.08kg / 2.38lbs	Holds 1 LED bar (up to 7.5Kg)

PIONEER™ ACCESSORIES - TECH SPECS



Check your vehicle manufacturer's handbook for your car's on-road and off-road roof load rating.

REF	PRODUCT	PART #	SUITS	QTY	DIMENSIONS	WTY	WEIGHT	NOTE
11.19	Vertical Jerry Can	43107	Pioneer™	1	480 x 240 x 210mm / 18.8" x 9.4 x 8.2"	1yr	3.1kg / 6.8lbs	Holds 1 jerry can. Suits most 20l and 10l metal or plastic jerry cans.
11.19	Horizontal Jerry Can	43108	Pioneer™	1	585 x 205 x 140mm / 23" x 8" x 5.5"	1yr	3kg / 6.6lbs	Holds 1 jerry can. Suits most 20l and 10l metal or plastic jerry cans.
11.19	Double Vertical Jerry Can	43151	Pioneer™	1	460 x 380 x 190mm / 18" x 14.9" x 7.4"	1yr	3.7kg / 8.2lbs	Holds 2 jerry cans. Suits most 20l and 10l metal or plastic jerry cans.
11.19	Double Horizontal Jerry Can	43152	Pioneer™	1	610 x 380 x 130mm / 24" x 14.9" x 5.1"	1yr	3.6kg / 7.9lbs	Holds 2 jerry cans. Suits most 20l and 10l metal or plastic jerry cans.
11.20	Gas Bottle Holder	RGBH4	Pioneer™	1	220 x 45 x 25mm / 8.6" x 1.7" x 0.9"	1yr	1.25kg / 2.76lbs	Suits most 4.0L gas bottles.
11.21	Rhino Spare Wheel Strap	RSWS	Pioneer™	1	145 x 60 x 40mm / 5.7" x 2.4" x 1.6"		0.7kg / 1.5lbs	Eye bolt kit (3) part# 43178 required (sold separately).
11.22	Aluminum Folding Ladder Bracket	RUFLB	Pioneer™	1		3yrs	2.1kg / 4.6lbs	
11.23	Wheel Step	RWS	NA	1		3yrs		Tyre size: 30 x 9.50R15. 285 X 75r16. 33 X 10.5R15. 265 X 70r16 265 X 75r16. 265 X 70r17. 33 X 12.50R15 (tight fit)
11.24	Shovel	43123	NA	1	1410mm / 55.5"	N/A	2.25kg / 5lbs	
11.25	Spade	43124	NA	1	1065mm / 42"	N/A		
11.26	Pioneer™ Grab Handle (x2)	43245	Pioneer™					
11.27	Pioneer Roof Top Tent Bracket Kit	53101	Pioneer	4	282 x 45mm / 11 x 2in	3 yrs	1.8kg / 4lbs	Includes hardware
11.28	Vortex Aerial Bracket	S613	Vortex Bar	1	3 x 100 x 40 mm / 0.1" x 4" x 2"	3yrs		Load rating 3kg / 6.6lb
11.29	Ladder Mount	43217	Pioneer™	1	135 x 50 x 40mm / 5.3" x 1.9" x 1.5"	3yrs	0.6kg	
11.30	Conduit Locking End Caps for Schedule 40 PVC Pipes	LSE102	Pioneer™	2	100mm / 3.9"	5yrs		Two conduit locking end caps are included. Suits Schedule 40, 3.9 inch PVC pipes
11.31	Aluminum Folding Ladder	RAFL	Pioneer™	1	2325mm/91.5" max ext, 2000mm/78.7" min ext	5yrs	5.3kg / 11.7lbs	
10.1.1	Stow it Starter Kit	710-ATA-00001	PIONEER	4	124 x 76 x 83 ea	3 YRS	1.75 kg	Material: Black Powder coated Aluminum die cast metal
10.1.2	Roller Adapter	710-ATA-00002	STOW IT	2	79 x 75 x 74 ea	3 YRS	0.3 kg	Material: Re-enforced Nylon plastic
10.1.3	Light Bar Adapter	710-ATA-00003	STOW IT	2	97 x 51 x 74 ea	3 YRS	0.2 kg	Material: Black Powder coated Aluminum die cast metal
10.1.4	Batwing Adapter	710-ATA-00005	STOW IT	2	49 x 45 x 124 ea	3 YRS	0.3 kg	Material: Black Powder coated Aluminum die cast metal





NOW AVAILABLE

RECONN-DECK™

TRUCK BED SYSTEM

- 69. Reconn-Deck – Leave No Gear Behind
- 70. Key Features
- 72. Reconn-Deck Range
- 75. Adventure Set-ups
- 78. Truck Bed Parts
- 79. Tech Specs



RECONN-DECK™

LEAVE NO GEAR BEHIND

Introducing the all new Reconn-Deck™, our most versatile truck bed system. Carefully crafted with a sleek and rugged design that looks stylish on even the toughest trucks.

Featuring a modular design, the Reconn-Deck™ lets you create your own platform. There are countless ways to customize, accessorize and extend your set-up, giving you all the carry space you need for overlanding adventures.

Please note this system is only compatible with vehicles that have rails on the tub.



Reconn-Deck™ with Pioneer Platform



Reconn-Deck™ Bars with NS Bars



Reconn-Deck™ with Vortex Bars



Reconn-Deck™ Bars

RECONN-DECK™ READY FOR ADVENTURE

Whether you're heading out on overlanding adventures, taking the family camping, or tackling your next job, the many options to customize the Reconn-Deck means it's suited to a range of uses. The system doubles your storage space and still gives you access to the truck bed for bulkier items. The system is also designed to minimize the vehicle height, protecting pop-up tents from the wind and ensuring easy access to parking lot and campsites.

KEY FEATURES

- With cargo allowances of up to 150kg/330lbs
- System consists of four towers, with secure core locks, plus crossbars or Pioneer Platform
- Fixed height of 11" for easy access to your gear
- Optional added security with secure core locks on Vortex and Reconn-Deck bars and accessories
- Light weight aluminum construction
- Quick and easy to install or dismantle (includes tools)
- Designed and engineered in Australia
- No drilling required



ROOM FOR BULKIER CARGO

Gain another level of space while still having access to the bed for large and heavy items.



TOWER CHANNELS

Channels on the legs mounts give you multiple points to mount accessories and create your ideal setup. Maximum load carrying capacity for each Reconn-Deck Tower Channel is 10kg/22lbs.

RECONN-DECK™ RANGE

THE NEXT LEVEL OF ADVENTURE



JEEP GLADIATOR JT



RAM 1500



NISSAN TITAN



TOYOTA TACOMA



TOYOTA TUNDRA



NISSAN FRONTIER

MANUFACTURER	MODEL	YEAR	VARIANTS
Toyota	Tacoma	05 to 15	Double Cab Access Cab
Toyota	Tacoma	16 to 22	Double Cab Access Cab
Toyota	Tundra	07 to 21	Double Cab Access Cab
Nissan	Frontier	05 to 22	Crew Cab King Cab
Nissan	Titan	16 to 22	Crew Cab XD Crew Cab King Cab
Jeep	Gladiator	20 to 22	Dual Cab
RAM	1500	19 to 22	Crew Cab Regular Cab Quad Cab
RAM	2500	19 to 22	Crew Cab Mega Cab
RAM	3500	19 to 22	Crew Cab Mega Cab

More vehicle applications coming soon

RECONN-DECK™ RANGE

THE NEXT LEVEL OF ADVENTURE



For product numbers and specification, see page 79



RECONN-DECK™ BARS

- Integrated channels on all 4 sides for mounting of accessories
- Made from powder coated aluminum providing the ultimate in corrosion resistance
- Removable end caps for easy installation of accessories.
- Secure core lock included
- Compatible with most Rhino-Rack Pioneer and roof rack accessories
- Option to run 3 cross bars on selected vehicles with longer tubs
- Up to 150kg/330lb on-road and off-road load rating. Up to 375kg/826lbs static load rating.*

*To get your cargo capacity - subtract the system weight from the system load limit. Manufacturers load limits apply.



RECONN-DECK™ BARS WITH NS BARS

- Create a Reconn-Deck™ platform with a combination of Reconn-Deck™ Bars and Reconn-Deck NS Bars. Choose a configuration to suit you adventure best, with two Reconn-Deck Bars and up to four Reconn-Deck NS Bars to customize your platform.
- Compatible with most Rhino-Rack Pioneer and roof rack accessories
- Reconn-Deck NS Bars can be moved to suit all setups. Bars can be moved/spaced out to suit users specific needs
- Underside channels can be accessed to mount recovery tracks, shovel or other accessories
- Up to 150kg/330lb on-road and off-road load rating. Up to 375kg/826lbs static load rating.*

*To get your cargo capacity - subtract the system weight from the system load limit. Manufacturers load limits apply.

RECONN-DECK™ RANGE

THE NEXT LEVEL OF ADVENTURE



For product numbers and specification, see page 79



RECONN-DECK™ WITH PIONEER PLATFORM

- Underside channels can be accessed to mount recovery tracks, shovel or other accessories
- Up to 120kg/264lb on-road and off-road load rating. Up to 300kg/660lbs static load rating.*

*To get your cargo capacity - subtract the system weight from the system load limit. Manufacturers load limits apply.



RECONN-DECK™ WITH VORTEX BARS

- Entry level option, can be built on at a later time (upgrade to Pioneer or overlanding bars with the same legs)
- C-channels to add range of accessories for all applications
- Bars designed to minimize wind noise
- Option to run 3 cross bars on selected vehicles with longer tubs
- Up to 100kg/220lb on-road and off-road load rating. Up to 250kg/550lbs static load rating.*

*To get your cargo capacity - subtract the system weight from the system load limit. Manufacturers load limits apply.

To build your ultimate Reconn-Deck™ setup, you first start with 4 Reconn-Deck towers and then choose your type of bars (Vortex Bars, Reconn-Deck Bars and Reconn-Deck NS Bars) or Pioneer Platform to suit. Channels on the towers gives you multiple points to mount accessories and create your ideal set up.

RECONN-DECK™ ADVENTURE SETUPS



RECONN-DECK™ ADVENTURE SETUPS



FOR OVERLANDING



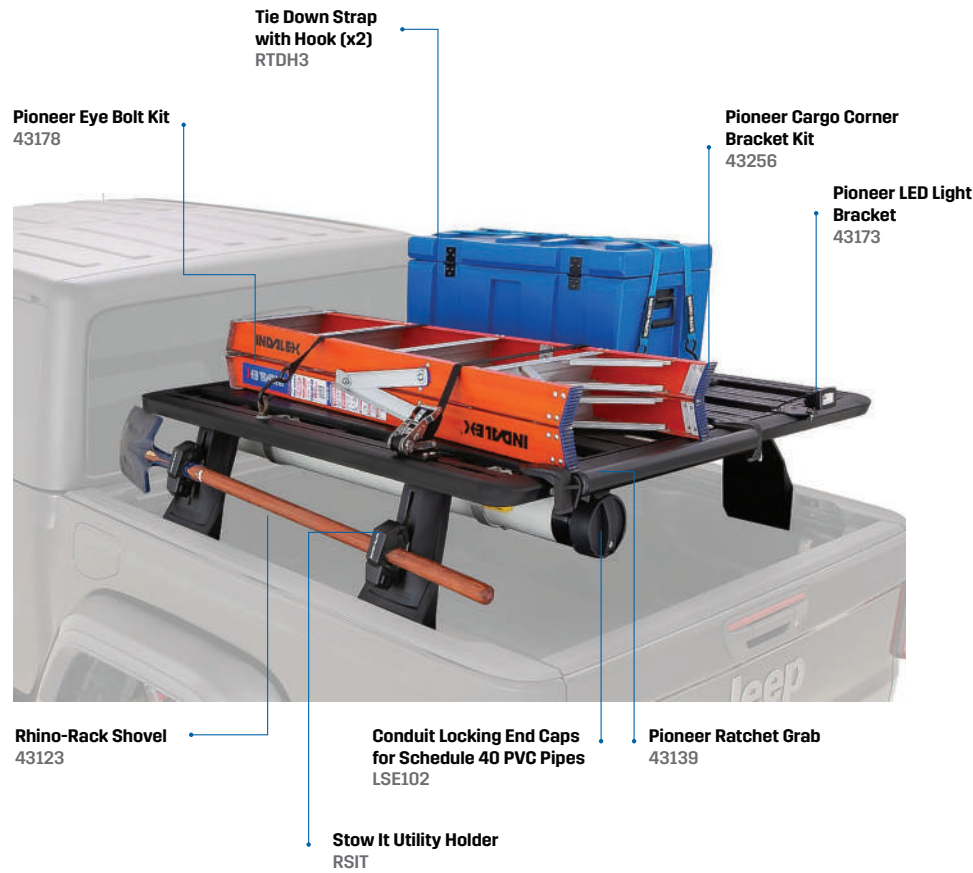
FOR THE CAMPER



RECONN-DECK™ ADVENTURE SETUPS



FOR THE CONTRACTORS



FOR THE CYCLIST



RECONN-DECK™ ADVENTURE SETUPS



FOR THE SURFER & FISHER



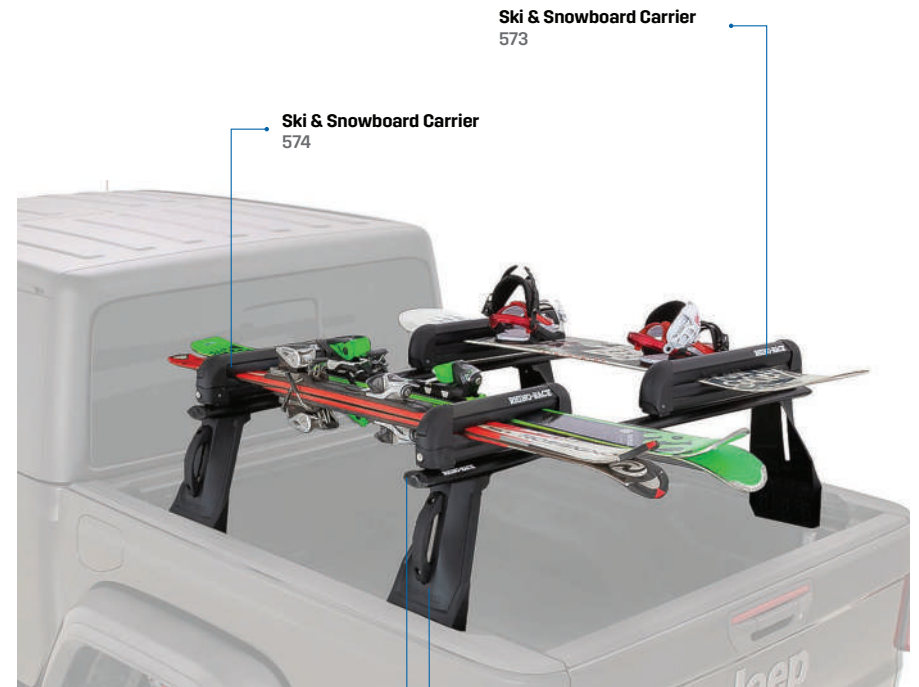
Rapid Straps with Buckle Protector (3.5m)
RTD35P

Fishing Rod Holder
572

Pioneer™ Wrap Pads with Straps (700mm)
43150



FOR THE SNOW



Ski & Snowboard Carrier
573

Ski & Snowboard Carrier
574

Grab Handles
43245

Vortex bar (Black 54")
VA137B

12.0 TRUCK BED PARTS



Check your vehicle manufacturer's handbook for your car's on-road and off-road roof load rating.



12.1 RECONN-DECK TOWERS

RDT2, RDT4

The Reconn-Deck towers are available in a set of two or four. They are stylishly designed to suit a wide range of vehicles. With a fixed height of 11" providing easy access to gear in the bed.



12.2 VORTEX BAR

VA126B, VA150B, VA165B

The Rhino-Rack Vortex Bars are a sleek crossbar option for your truck bed system, with three different predefined lengths available to suit every vehicle. All bars include the VGS rubber strip which has been designed to reduce wind drag and noise as well as providing added protection for your roof racks and load. All bars include end caps.



12.3 RECONN-DECK BAR

RDB126, RDB150, RDB165

The Rhino-Rack Reconn-Deck Bar is a strong and durable crossbar. It has integrated channels on all four sides, allowing for mounting of accessories. These are available as a single item, and are available in three different predefined lengths to suit a range of vehicles.



12.4 RECONN-DECK NS BAR

RDNSB50, RDNSB75, RDNSB100

The Rhino-Rack Reconn-Deck NS Bar is a strong and durable connecting bar that allows you to build your own Reconn-Deck platform. It has integrated channels on all four sides, allowing for mounting of accessories. These are available as a pair, and are available in three different predefined lengths to suit a range of vehicles.



12.5 TRACK MOUNT FIT KIT - 1

RDFK1

A vehicle specific track mounting fit kit is included in your Reconn-Deck setup.



12.6 TRACK MOUNT FIT KIT - 2 & 3

RDFK2, RDFK3

A vehicle specific track mounting fit kit is included in your Reconn-Deck setup.



12.7 RECONN-DECK BAR ROOF TOP TENT BRACKET KIT

RTTRDB

Made from stainless steel with pre-cut mounting holes, the Pioneer Roof Top Tent Bracket Kit allows for easy installation of your roof top tent to your Pioneer Platform. Kit includes 4x brackets & hardware to suit.



12.8 PIONEER ROOF TOP TENT BRACKET KIT

53101

Made from stainless steel with pre-cut mounting holes, the Pioneer Roof Top Tent Bracket Kit allows for easy installation of your roof top tent to your Pioneer Platform. Kit includes 4x brackets & hardware to suit.

TECH SPECS



Check your vehicle manufacturer's handbook for your car's on-road and off-road roof load rating.

REF	PRODUCT	PART #	QTY	DIMENSIONS mm (inch) H/W	WTY	WEIGHT Kg/Pounds
12.1	Reconn Deck Tower - 1 X PAIR	RDT2	2	370mm(14.5") / 201mm (7.9")	5 yrs	2.9/6.5
12.1	Reconn Deck Tower - 2 X PAIR	RDT4	4	370mm(14.5") / 201mm (7.9")	5 yrs	5.8/12.9
12.2	Vortex Bar (BLACK 50")	VA126B	1	1260mm (50")	5 yrs	1.7/3.7
12.2	Vortex Bar (BLACK 59")	VA150B	1	1500mm (59")	5 yrs	2.0/4.3
12.2	Vortex Bar (BLACK 65")	VA165B	1	1650mm (65")	5 yrs	2.2/4.8
12.3	1260mm Reconn - Deck Bar - Single	RDB126	1	1260mm (50")	5 yrs	3.7/8.0
12.3	1500mm Reconn - Deck Bar - Single	RDB150	1	1500mm (59")	5 yrs	4.2/9.4
12.3	1650mm Reconn - Deck Bar - Single	RDB165	1	1650mm (65")	5 yrs	4.6/10.1
12.4	500mm Reconn - Deck NS Bar - Pair	RDNSB50	2	500mm (20")	5 yrs	3.5/7.5
12.4	750mm Reconn - Deck NS Bar - Pair	RDNSB75	2	750mm (30")	5 yrs	4.7/10.4
12.4	1000mm Reconn - Deck NS Bar - Pair	RDNSB100	2	1000mm (39.3")	5 yrs	6.0/13.3
12.5	Track Mount Fit Kit - 1	RD-FK1	1	63mm (2.5") / 23mm (0.9")	5 yrs	0.4/0.9
12.6	Track Mount Fit Kit - 2	RD-FK2	1	166mm (6.5") / 28mm (1.1")	5 yrs	0.9/2.0
12.6	Track Mount Fit Kit - 3	RD-FK3	1	166mm (6.5") / 29mm (1.1")	5 yrs	0.7/1.4
12.7	Reconn-Deck Bar Roof Top Tent Bracket Kit	RTTRDB	4	74 x 50mm / 3 x 2"	3 years	0.7/1.5
12.8	Pioneer Roof Top Tent Bracket Kit	53101	4	282 x 45mm / 11 x 2"	3 years	1.8 / 4





LUGGAGE CARRIERS

- 82. Trays
- 83. Tray Accessories
- 84. Luggage Bags
- 86. Roof Boxes
- 87. Luggage Carrier - Tech Specs

13.0 TRAYS

BASKETS & TRAYS ARE A STEADFAST TRADITION OF RHINO-RACK®.



For product numbers and specification, see page 87



13.1 XTRAY SMALL

RMCB01

The Xtray securely transports your luggage and gets your vehicle a lot more compliments.



13.2 XTRAY LARGE

RMCB02

The Xtray securely transports your luggage and gets your vehicle a lot more compliments.



13.3 XTRAY PRO

RMCB03

The Xtray Pro securely transports your luggage & is integrated with our Thru Axle system to store your bike when needed.

14.0 TRAY ACCESSORIES

VIEW THE RANGE OF X-TRAY ACCESSORIES.



For product numbers and specification, see page 87



14.1 LUGGAGE NETS

RLN1, RLN2

The luggage net offers easy fitting with one piece hooking units for you to easily load and unload your gear.



14.2 HD BAR U-BOLTS

RUBK

For use when mounting a Luggage Box/Ski Box to the Rhino-Rack® Heavy Duty Bar.



14.3 RHINO BAR VA U-BOLTS

S280

Used to mount a Rhino-Rack® Platform to the Rhino-Rack® Vortex Bar.

15.0 LUGGAGE BAGS

TRUNK SPACE ON THE ROOF.

PERFECT COMPANIONS FOR ROOF RACKS OR A PIONEER TRAY, ROOF BAGS AND BOXES.

For all those items you need to throw in to make your adventure more enjoyable, why not simply add them to your roof. Our bags are quick and easy to install and most importantly keep everything dry and clean on your trip.

Features:

- Constructed using 500D High-End poly canvas tarpaulin - waterproof, tear resistant & fiber reinforced.
- Protective **hook and loop fastener** overlap to shield the zipper from the elements.
- Welded seams provide superior waterproofing compared to traditional stitching methods.
- Extra strong UV50+ securing straps with heavy duty Duraflex buckles to easily secure the luggage bag to your luggage tray or basket.
- Includes a storage bag to keep the luggage bag protected between trips

KEEP YOUR EXTRA BULKY LIGHTWEIGHT GEAR SAFE AND SOUND WITH OUR RANGE OF RHINO LUGGAGE BAGS.



For product numbers and specification, see page 87



15.1 200L/7.06ft³

LB200



15.2 250L/8.83ft³

LB250



15.3 350L/12.36ft³

LB350



15.4 500L/17.66ft³

LB500



16.0 ROOF BOXES

YOU CAN CARRY MORE GEAR WHEN YOU'RE TRAVELING WITH A RHINO-RACK® ROOF TOP LUGGAGE BOX



WHAT'S IN THE BOX?

With a Rhino-Rack® MasterFit Roof Box you can conveniently carry more. Our top of the line 4WD off-road proven roof box can carry an impressive 75kg/165lb.

Our unique MasterFit Technology means you can quickly and safely fit the box by using a revolutionary Twist to Tighten & Press to Lock clamping system.

Features:

- Easy Twist to Tighten & Press to Lock clamping system
- Opening available on both sides with key included
- Made from tough and durable material (ABS/ASA)
- Capable of carrying up to 75kg/165lb
- Large size is perfect for storage of skis & snowboards
- For crossbars with a max width of 90mm & max height of 35mm

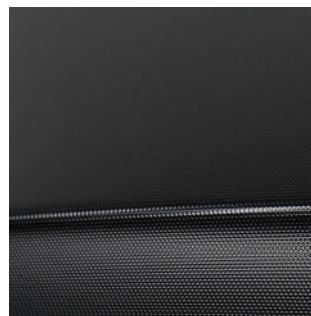
COMPARISON CHART RM	RMFT440	RMFT530A	RMFZ66
Color	Black	Black	Black
External Length (mm)	1930mm / 76"	2150mm / 84.6"	1930mm / 76"
External Width (mm)	813mm / 32"	900mm / 35.4"	813mm / 32"
External Height (mm)	430mm / 17"	430mm / 17"	355mm / 14"
Capacity (liters)	440L	530L	400L
Box weight	17.5kg / 38.6lb	21.5kg / 47.4lb	17kg / 37.5lb
Max. allowed weight	75kg / 165.3lb	75kg / 165.3lb	75kg / 165.3lb
Crossbar Spacing	550-1000mm	550-1000mm	550-1000mm
Material	ABS/PMMA	ABS/PMMA	ABS/PMMA
Opening	Dual	Dual	Dual
Locking points	Central	Central	Central
Load securing straps included	3	3	3
Warranty	5 years	5 years	5 years



Jaws tighten around crossbar.



Twist and press button to lock.



Sleek, textured look.

LUGGAGE CARRIER - TECH SPECS



Check your vehicle manufacturer's handbook for your car's on-road and off-road roof load rating.

REF	PRODUCT	PART #	SIZE (EXTERNAL)	SIZE (INTERNAL)	WEIGHT (KG/LB)	WTY	NOTES
13.1	Xtray Small	RMCB01	1200mm x 900mm x 200mm / 47.2" x 35.4" x 7.9"	1070mm x 760mm x 125mm / 42.1" x 30" x 5"	14kg / 30.9lb	3yrs	Universal clamp fits most crossbar types.
13.2	Xtray Large	RMCB02	1480mm x 1090mm x 150mm / 58.3" x 42.9" x 5.9"	1350mm x 950mm x 125mm / 53.1" x 37.4" x 5"	21kg / 46.3lb	3yrs	Universal clamp fits most crossbar types.
13.3	Xtray Pro	RMCB03	1480mm x 1090mm x 150mm / 58.3" x 42.9" x 5.9"	1350mm x 950mm x 125mm / 53.1" x 37.4" x 5"	21kg / 46.3lb	3yrs	Universal clamp fits most crossbar types. Features two Thru Axle Bike Carriers.
14.1	Luggage Net Small	RLN1	800mm x 1200mm / 31.5" x 47.2"	800mm x 1200mm / 31.5" x 47.2"	0.53kg / 1.17lb	1yr	
14.1	Luggage Net Large	RLN2	1000mm x 900mm / 39.4" x 35.4"	1000mm x 900mm / 39.4" x 35.4"	0.61kg / 1.34lb	1yr	
14.2	U-Bolt - HD Fit Kit	RUBK	75mm x 67mm / 3" x 2.6"	-	0.66kg / 1.46lb	3yrs	To suit Steel Mesh Basket/Platform.
14.3	U-Bolt - VA Fit Kit	S280	65mm x 100mm / 2.6" x 4"	-	0.65kg / 1.43lb	3yrs	To suit Steel Mesh Basket/Platform.
15.1	Weatherproof Luggage Bag (200L)	LB200	1400 x 500 x 300mm / 55.1" x 19.7" x 11.8"	-	3kg / 6.6lbs	1yr	Suits Basket / Alloy Tray / Pioneer. Material: poly canvas tarpaulin. Not to be attached directly to crossbars or directly to the roof.
15.2	Weatherproof Luggage Bag (250L)	LB250	1100 x 800 x 300mm / 43.3" x 31.5" x 11.8"	-	3.2kg / 7.1lbs	1yr	Suits Basket / Alloy Tray / Pioneer. Material: poly canvas tarpaulin. Not to be attached directly to crossbars or directly to the roof.
15.3	Weatherproof Luggage Bag (350L)	LB350	1200 x 960 x 300mm / 47.2" x 37.8" x 11.8"	-	3.9kg / 8.6lbs	1yr	Suits Basket / Alloy Tray / Pioneer. Material: poly canvas tarpaulin. Not to be attached directly to crossbars or directly to the roof.
15.4	Weatherproof Luggage Bag (500L)	LB500	1500 x 1100 x 300mm / 59" x 43.3" x 11.8"	-	5kg / 11lbs	1yr	Suits Basket / Alloy Tray / Pioneer. Material: poly canvas tarpaulin. Not to be attached directly to crossbars or directly to the roof.

LOAD SECURING

- 90. Rapid Locking Straps
- 91. Rapid Straps
- 92. Securing
- 94. Load Securing - Tech Specs





NO DOGS

RUBICON

Jeep
WRANGLER

INCEPTION

17.0 RAPID LOCKING STRAPS

FASTEN AND SECURE YOUR LOAD QUICKLY AND SAFELY.



For product numbers and specification, see page 94

- Straps can be tightened before & after cover is locked.
- 3.2mm / 0.126" PU coated steel wire encased in the strap to minimize the risk cutting.
- Steel wire starts 250mm / 9.8" from the end, allowing easy feed of strap through the cam buckle and ease in tying off excess strap. This is also a great feature to prevent cutting of the strap.
- Maximum lashing capacity is 225kg / 496lbs.
- Tested to AS4380:2001
- Cam buckle Cover is completely removable to aid in feeding/ securing strap.
- Security stop inside cover helps prevent theft.
- Corrosion resistant aluminum cam buckle.



Rapid Locking Straps are available in the following sizes:

- RTD25L (2.5m / 98.4")
- RTD35L (3.5m / 137.8")



Lockable cover is completely removable and Masterkey™ compatible



Rubberized cam buckle helps protect your load/vehicle from damage



Includes: 2 straps, 2 covers with locks, 2 keys, 2 storage hook and loop fastener straps.

16.0 RAPID STRAPS

ENSURING THAT YOUR LOAD IS FASTENED
AND SECURED TO YOUR ROOF RACKS.



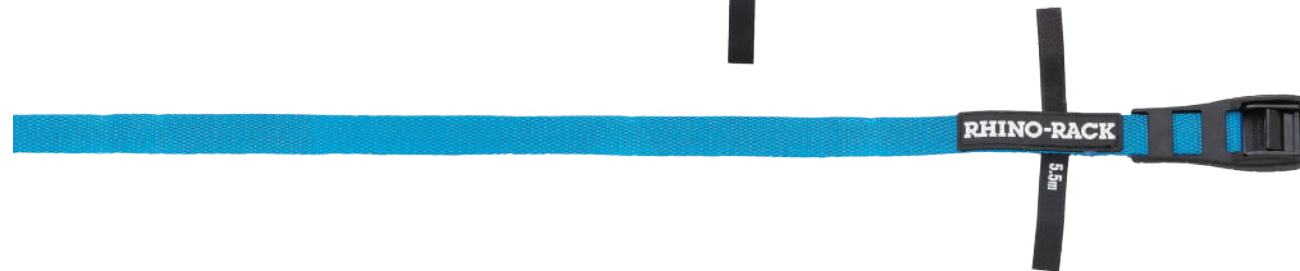
For product numbers and
specification, see page 94



RTD35P
Rapid Strap 3.5M/137.8 (BLACK)



RTD45P
Rapid Strap 4.5M/177.2" (RED)



RTD55P
Rapid Strap 5.5M/216.5" (BLUE)

Rapid Straps are suitable for heavy duty use and feature a unique design registered Buckle Protector. Designed to encase the metal cam buckle, the Buckle Protector provides maximum protection to avoid denting, scratching or marking any of your gear or vehicle. These items also include a sewn in **hook and loop fastener** Roll it Strap to keep the strap neatly stowed on its own.

- Features: Sewn in **hook and loop fastener** "Roll it" Strap to keep the strap neatly stowed and indicate strap length.
- 2 Straps per pack
- Maximum lashing capacity is 225kg / 496lb.
- Corrosion resistant Aluminum cam buckle.
- Tested to AS4380:2001



19.0 SECURING

ENSURING THAT YOUR LOAD IS FASTENED AND SECURED TO YOUR ROOF RACKS.

 For product numbers and specification, see page 92



19.1 RAPID HOOK STRAP

RTDH3

The ideal accessory to ensure that your load is fastened and secured to your roof racks.



19.2 RATCHET GRAB

43139

The Pioneer Ratchet Grab comes with a 2.0m strap, an eye bolt and multi-directional fitting.



19.3 PIONEER EYE BOLT KIT

43178

Designed to aid in carrying heavy loads on your Rhino-Rack® Pioneer System. Kit includes 4 Eye Bolts.



19.4 CAM BUCKLE PIONEER PICKUP KIT

43179

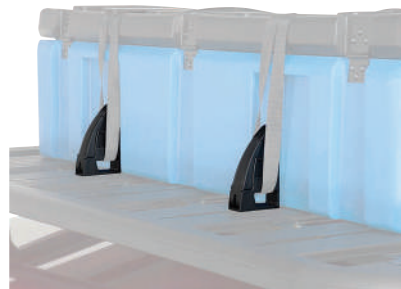
The Cam Buckle Pioneer Pickup Kit allows you to strap down items to your Pioneer system very quickly and easily as the cam buckle straps come with loops on the end resistance and are easily installed.



19.5 ADJUSTABLE LOAD HOLDER

RLH

Designed to secure your load in position so it won't slide in transit.



19.6 ADJUSTABLE LOAD HOLDER

RLH1, RLH2

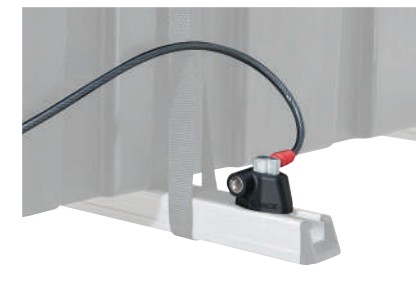
Designed to secure your load in position so it won't slide in transit.



19.7 CABLE CORE LOCKDOWN

43205, 43206, 43207

Designed to suit a wide range of crossbar brands and simple to install with the supplied Allen key.



19.8 HD CABLE CORE LOCKDOWN

43208, 43209

Ergonomically designed to suit a wide range of crossbar brands. Allen key included.



LOAD SECURING - TECH SPECS



Check your vehicle manufacturer's handbook for your car's on-road and off-road roof load rating.

REF	PRODUCT	PART #	SUITS	QTY	DIMENSIONS	WTY	WEIGHT	NOTE
17.0	Rapid Straps Locking	RTD25L	N/A	2	2.5m / 98.4"	1yr	1.1kg / 2.4lbs	Lashing capacity 225kg/496lb
17.0	Rapid Straps Locking	RTD35L	N/A	2	3.5m / 137.8"	1yr	1.3kg / 2.9lbs	Lashing capacity 225kg/496lb
18.0	Rapid Straps	RTD35P	N/A	2	3.5m / 137.8"	1yr	0.4kg / 0.9lbs	Lashing capacity 225kg/496lb
18.0	Rapid Straps	RTD45P	N/A	2	4.5m / 177.2"	1yr	0.5kg / 1.1lbs	Lashing capacity 225kg/496lb
18.0	Rapid Straps	RTD55P	N/A	2	5.5m / 216.5"	1yr	0.55kg / 1.21lbs	Lashing capacity 225kg/496lb
19.1	Rapid Hook Straps	RTDH3	N/A		3m / 118"			Lashing capacity 225kg/496lb
19.2	Ratchet Grab	43179	Pioneer	2	1.8m / 70.9" strap length	1yr	1kg / 2.2lbs	Lashing capacity 225kg/496lb
19.3	Eyebolt Kit	43178	Pioneer	4		1yr		
19.4	Pick Up Kit	43179	Pioneer	2	2.2m / 86.6" strap length	1yr	0.7kg / 1.5lbs	Lashing capacity 225kg/496lb
19.5	Adjustable Load Holder	RLH	VA Bars/Pioneer	2				
19.6	Adjustable Load Holder	RLH2, RLH2	VA Bars/Pioneer	2	160 x 85 x 65mm / 6.3" x 3.3" x 2.5"	3yrs	0.3kg / 0.7lbs	Allows the profile to be minimized to 130mm
19.7	Cable Core Lockdown	43205	Pioneer/VA	1	0.6m / 1'11"	3yrs	0.3kg / 0.7lbs	8mm (1/3") PVC coated steel wire with zinc protection
19.7	Cable Core Lockdown	43206	Pioneer/VA	1	1.2m / 3'11"	3yrs	0.35kg / 0.77lbs	8mm (1/3") PVC coated steel wire with zinc protection
19.7	Cable Core Lockdown	43207	Pioneer/VA	1	1.8m / 5'11"	3yrs	0.4kg / 0.9lbs	8mm (1/3") PVC coated steel wire with zinc protection
19.8	HD Cable Core Lockdown	43208	HD Bar	1	0.6m / 1'11"	3yrs	0.3kg / 0.7lbs	8mm (1/3") PVC coated steel wire with zinc protection





SHADE

- 98. **Covering All Bases**
- 99. **Batwing**
- 100. **Sunseeker**
- 102. **Shade Accessories**
- 104. **Shade - Tech Specs**
- 106. **Awning**

COVERING ALL BASES

The Rhino-Rack® Batwing boasts a range of great features. This amazing 270 degree awning is a perfect way to bring shade to all your adventures. It is light, tough, easy to use but most of all fully integrated.

Materials:

- The hinges are made from flexible and durable plastic to minimize the risk of snapping support poles.
- The Awning fabric is a heavy duty rip-stop, water and mold resistant material that has been independently tested to UPF 50 + rating, offering the maximum sun protection.

Accessories for the Batwing are available on page 97.





BATWING™

BATWING™
COMPACT



20.1 BATWING AWNING

33200, 33100

- Black powder coated extrusion and poles plus the new black UV resistant PVC bag, looks fantastic on any vehicle.
- Easy grip zippers.
- The large straps make it easier to pack and unpack and keep the awning safely stored while you travel.
- New internal storage pocket holds all 8 ropes and 10 pegs.
- Powder-coated aluminum poles feature cross-directional tie down points for added security in windy conditions.
- Brackets included.
- Compatible with all existing Rhino-Rack® side walls, extensions and tents.

20.2 BATWING COMPACT

33300, 33400

- Available in both left and right hand vehicle.
- UV50+ sun protection
- 270° of shade and 6.4m² coverage area (69 square foot).
- Ultra durable lightweight 210D poly oxford water resistant PU2000mm (UV50+).
- Black anodized aluminum and powder coated extrusions and poles.
- 580gsm black PVC outer bag.
- Drop down poles integrated into the awning.

WHERE THE SUN DON'T SHINE.

The Rhino-Rack® Sunseeker is constructed from the same high quality materials as the Batwing. Available in 2 sizes it is perfect for small, medium or large vehicles and provides protection from the elements for all your outdoor activities.

Simply mount the Sunseeker Awning to your roof rack and roll out the 2.5m / 8.2ft awning to create a 5.15sqm / 55.38 sq ft shaded area for you and your family to relax in. The Sunseeker Awning is perfect for watching sports, camping, picnics, lunch breaks at work and lazy days at the beach.

Accessories for the Sunseeker are available on page 98.



sunseeker



20.3 SUNSEEKER AWNING

32133, 32132

- Quick & Easy to set up and pack down.
- UV-protection with a UV50+ rating.
- Corrosion resistant.
- MouldShield™.
- Water resistant rating of PU 2000mm.
- **hook and loop fastener** tensioning tabs attached to the awning to aid water run off.
- Sturdy support telescopic poles made from black anodized aluminum.
- Spikes at the base of each pole aid in securing them to the ground with a convenient peg rope.
- Black heavy duty PVC 540gsm carry bag.
- All hardware covered in plastic caps for protection and to reduce wear & tear.
- Protective patches increases strength, durability, and longevity.
- Fits all Rhino-Rack® and competitor roof racks with specific fitting kits.
- Compact single extrusion design to minimize product height when closed and stored on vehicle roof.

DOME



20.4 DOME AWNING

32125

- Can mount to both sides of the vehicle as well as the rear.
- Provides 6.5' of extra head clearance
- Corrosion resistant.
- Large 2500mm x 2400mm (98" x 94") coverage.
- Made from rip-stop polycotton which is tough, weather/water proofed, mold resistant and UV50+ protected.
- Quick to set up and easy to use
- Out of the box you will receive:
 - 1 x awning, 2 x guy ropes,
 - 2 x vertical poles,
 - 2 x support poles.
- 1 year warranty.

THE HARSH SUMMER SUN WON'T BE ABLE TO STOP KEEN ADVENTURERS FROM HITTING THE ROAD AND EXPLORING THE GREAT OUTDOORS WHEN YOU HAVE A RHINO-RACK® AWNING.

Not all awnings can shield you from UV radiation, that's why Rhino-Rack® is proud our awning range offers maximum UV protection. With a UPF 50+ rating to provide excellent protection from UV radiation, meaning you will be sun safe while relaxing at your chosen location.

But remember, shade does not provide 100% protection. Some of the sun's UV can still reach you in the shade by reflecting off surrounding surfaces. As a rule of thumb if you can see the sky, you are less than fully protected so always combine shade with clothing, a hat, sunglasses and sunscreen.



21.0 SHADE ACCESSORIES

ACCESSORIES THAT WILL FIT ONTO OUR AWNING RANGE INCLUDING TENTS AND SHADE EXTENSIONS.



For product numbers and specification, see page 104



21.1 SUNSEEKER 2.0M AWNING EXTENSION

32111

Extra cover to your Sunseeker 2.0 Awning.



21.2 SUNSEEKER SIDE WALL

32112

Add an extra 2m x 2m of coverage and enjoy the extra shade and privacy.



21.3 SUNSEEKER EXTENSION ADAPTER

32106

The Rhino-Rack Sunseeker Extension Adapter is a heavy duty zipper that connects easily to the Sunseeker 2.5 Awning (32105) allowing you to attach an Awning Extension accessory (31101).



21.4 BATWING FRONT EDGE ZIPPERED INSERT

31124

Squares off the front edge of the Batwing for extra shade.



21.5 BATWING/SUNSEEKER EXTENSION

31101

Extend your coverage by a further 2m. Telescopic poles and pegs included.



21.6 DOME SIDE WALL

32131

Provide extra cover to your Dome 1300 Awning with the Dome 1300 Side Wall. Add an extra 2m x 2m of coverage and enjoy the extra shade and privacy the next time you are outdoors with your friends and family. Simply fit in place and secure to the ground at an angle.

21.0 SHADE ACCESSORIES

ACCESSORIES THAT WILL FIT ONTO OUR AWNING RANGE INCLUDING TENTS AND SHADE EXTENSIONS.



For product numbers and specification, see page 104



21.7 BATWING TAPERED EXTENSION WITH DOOR

33112

Tapered extension piece for our Batwing, featuring a door for easy access.



21.8 BATWING TAPERED ZIP EXTENSION

33111

Tapered extension piece for our Batwing and secure to the ground at an angle.



21.9 BATWING COMPACT EXTENSION WITH DOOR

33110

An easy to fit tapered extension piece for our Batwing Compact, featuring a door for easy access grip handle.



21.10 BATWING COMPACT TAPERED ZIP EXTENSION

33109

An easy to fit tapered extension piece for our Batwing Compact.



21.11 BATWING MESH FLOOR SAVER

31115

Made from a Polyethylene mesh cloth, the floor saver is cut to perfectly mirror the shape of your Batwing Awning. Fits the full sized Batwing Left (33100) and Batwing Right (33200).



21.12 BATWING HEAVY DUTY BAR HARDWARE KIT

33101

The fitting kit comes with the hardware required to fit the existing Batwing Awning Bracket to your Heavy Duty Bars.

SHADE - TECH SPECS



Check your vehicle manufacturer's handbook for your car's on-road and off-road roof load rating.

REF	PRODUCT	PART #	SIZE (OPEN)	SIZE (CLOSED)	MOUNT	WEIGHT	WTY	SUITS	NOTES
20.1	Batwing RH	33200	15m square / 161.5 square ft	2500 x 95 x 200 / 98.4" x 3.7" x 7.9"	Pioneer/VA/HD	Awning 19.5kg/43lb, hardware 2kg/4.4lbs	1yr		UV50+ 210D poly ox w/r PU2000mm
20.1	Batwing LH	33100	15m square / 161.5 square ft	2500 x 95 x 200 / 98.4" x 3.7" x 7.9"	Pioneer/VA/HD	Awning 19.5kg/43lb, hardware 2kg/4.4lbs	1yr		UV50+ 210D poly ox w/r PU2000mm
20.2	Batwing Compact	33300	6.4m / 68.9ft	2000 x 95 x 200 / 78.7" x 3.7" x 7.9"	Pioneer/VA/HD	17.90 kg / 39.5 lbs	1yr		UV50+ 210D poly ox w/r PU2000mm
20.2	Batwing Compact	33400	6.4m / 68.9ft	2000 x 95 x 200 / 78.7" x 3.7" x 7.9"	Pioneer/VA/HD	17.90 kg / 39.5 lbs	1yr		UV50+ 210D poly ox w/r PU2000mm
20.3	Sunseeker Black 2500	32133	2500 x 2100 / 98.4" x 82.7"	60 x 110 x 2500 / 2.4" x 4.3" x 98.4"	Pioneer/VA/HD	10kg / 22lbs	1yr		
20.3	Sunseeker Black 2000	32132	2000 x 2100 / 78.7" x 82.7"	60 x 110 x 2000 / 2.4" x 4.3" x 78.7"	Pioneer/VA/HD	10kg / 22lbs	1yr		
20.4	Dome Awning	32125	2500 x 2400 / 98" x 94"	1300mm / 51" wide	Pioneer/VA/HD	8.4kg / 18.6 lbs	1yr		
21.1	Sunseeker Extension	32111	1290 x 220 x 220 / 50.8" x 8.7" x 8.7"	-	Sunseeker	2.56kg / 5.6lbs	1yr	Sunseeker	Adds another 2m in width and 4m ²
21.2	Sunseeker Side Wall	32112	1290 x 220 x 220 / 50.8" x 8.7" x 8.7"	-	Sunseeker	2.8kg / 6.2lb	1yr	Sunseeker	Adds another 2m x 2m of additional coverage.
21.3	Sunseeker Extension Adapter	32106	3" x 12" x 6"	-	Sunseeker 2.5m	0.3kg / 0.7lbs	1yr	Sunseeker 2.5m	
21.4	Front Edge Zippered Insert	31124	1650 x 2325 / 65" x 91.5"	-	LH Batwing	1.4kg / 3.1lbs	1yr	Batwing	Fills out front edge of LH Batwings.
21.5	Sunseeker 2500 Extension	31101	1190 x 120 x 110 / 46.8" x 4.7" x 4.3"	-	Sunseeker	2.9kg / 6.3lb s	1yr	Sunseeker	Also suits Batwing.
21.6	Dome Side Wall	32131	98" x 79"	-	Dome 1300	2.8kg / 6.2lbs	1yr		
21.7	Tapered Extension with Door	33103	88" x 50" x 144"	-	Batwing	3.9kg / 8.8lbs	1yr	Batwing	
21.8	Tapered Zip Extension	33107	2300 x 3800 / 90.6" x 149.6"	-	Batwing	2.8kg / 6.2lbs	1yr	Batwing	Up to 4 extensions can be used.
21.9	Compact Tapered Extension with Door	33106	88" x 118"	-	Batwing	3.9kg / 8.8lbs	1yr	Batwing	
21.10	Compact Tapered Zip Extension	33104	88" x 118"	-	Batwing	3.9kg / 8.8lbs	1yr	Batwing	
21.11	Mesh Floor Saver	31115	9" x 22" x 9"	-	Batwing	3.2kg / 7.1lbs	1yr	Batwing	
21.12	Batwing Heavy Duty Bar Hardware Kit	33101	-	-	HD Bars	0.1kg / 0.4lb	3yr	Batwing	



AWNING



RHINO-RACK® UNIVERSAL

Part# 31111

- Bars: Rhino-Rack® Vortex, Heavy Duty, Pioneer range
- Use: Sunseeker



BATWING HD BRACKET KIT

Part# 31102

- Bars: Rhino-Rack® Heavy Duty
- Use: Batwing



TRACKLANDER TRAY

Part# 31104

- Bars: Tracklander
- Use: Batwing



SUNSEEKER EURO BAR BRACKET KIT

PART# 32102

- Bars: Rhino-Rack Heavy Duty
- Use: Sunseeker



SUNSEEKER AWNING ANGLED DOWN BRACKET

Part# 32127

- Bars: Flush bars
- Use: Sunseeker



BATWING TUBULAR RACK BRACKET KIT

Part# 31103

- Bars: ARB/TJM
- Use: Batwing



SUNSEEKER AWNING ANGLED UP BRACKET

Part# 32123

- Bars: Flush bars
- Use: Sunseeker



UNIVERSAL & SUNSEEKER AWNING KIT

Part# 31126

- Bars: Rhino-Rack Heavy Duty, Rhino-Rack Vortex, Pioneer
- Use: Sunseeker



BATWING AWNING BRACKET

Part# 43259

- Bars: Rhino-Rack Heavy Duty* and Vortex
- Use: Batwing* Heavy Duty needs 33101

A person is camping in a snowy mountain landscape. A large, tan-colored tent is set up on a dirt path. To the left of the tent, a person is standing near a fire pit. The background features a dense forest of evergreen trees and a large, snow-capped mountain peak under a clear sky. The scene is illuminated by warm, golden light, suggesting late afternoon or early morning.

**LEAVE YOUR WORRIES.
BRING EVERYTHING ELSE.**

WATER

- 110. **Kayak Carriers**
- 112. **SUP & Kayak Accessories**
- 113. **Fishing Rod Holders**
- 114. **Kayak Loaders**
- 117. **Water - Tech Specs**





22.0 KAYAK CARRIERS

OUR LARGE RANGE OF RHINO-RACK® KAYAK AND CANOE CARRIERS ARE PERFECT FOR ALL TYPE OF WATER CRAFTS.



For product numbers and specification, see page 117



22.1 LOCKABLE KAYAK CARRIER

580, 581

- Hidden locks.
- Fits a variety of hull shapes.
- Marine grade felt lined rear cradles for maximum hull protection.
- 6mm thick TPV (santoprene rubber front pads)
- Pads provide 75mm x 200mm / 2.95in x 7.87in contact surface area.
- Perfect hull contact.
- Unique 180 degree rotation.
- 4 cradles included.
- Includes 4 straps (2x 16.4ft / 5m, 2x 11.5ft / 3.5m) with buckle protector.

Fit kit sold separately for heavy duty crossbars.



22.2 UNIVERSAL KAYAK CARRIER

570, 571

- Universal crossbar fit.
- Fits a variety of hull shapes.
- Perfect hull contact.
- Marine grade felt lined rear cradles for maximum hull protection.
- 6mm thick TPV (santoprene rubber front pads)
- Pads provide 75mm x 200mm contact surface area.
- Unique 180 degree rotation.
- Includes 4 straps (2x 16.4ft / 5m, 2x 11.5ft / 3.5m) with buckle protector

Fit kit sold separately for heavy duty crossbars.

22.0 KAYAK CARRIERS

OUR LARGE RANGE OF RHINO-RACK® KAYAK AND CANOE CARRIERS ARE PERFECT FOR ALL TYPE OF WATER CRAFTS.



For product numbers and specification, see page 117



22.3 NAUTIC STACK

S520

- The most space conscious kayak loading option.
- Can hold up to 4 kayaks.
- Fold-able Stack arm when not in use.
- Glass reinforced nylon base.
- Stack arm made of high strength Aluminum alloy.



22.4 FOLD-ABLE 'J' STYLE

S512

- Side loading.
- Rubber tube padding protection.
- Universal mounting system.
- Steel tubing with coating protection.



22.5 KAYAK CARRIER EXTENSION

S512X

- Transport 1 extra watercraft at the same time.
- Includes straps.
- Strong and durable steel coated.
- Completely assembled and ready out of the box.
- To be used in conjunction with the Fold-able 'J' Style Carrier (S512).



22.6 FIXED 'J' STYLE

S510

- Universal fitment.
- Side loading.
- Rubber tube padding protection.
- Stainless steel hardware included

23.0 SUP & KAYAK ACCESSORIES

OUR RANGE OF ACCESSORIES TO HELP STORE AND SECURE YOUR WATER CRAFT.



For product numbers and specification, see page 117



23.1 WRAP PAD

RWP01, RWP03, RWP04, RWP05

Wrap around your Vortex bars for the extra protection required when loading and unloading your kayak/canoe/surfboard.



23.2 VA UNDERSIDE TIE DOWN POINT

S606

Installed on the underside of the crossbar ensures kayaks and straps do not loosen.



23.3 WALL MOUNT

RWHL

The Wall Hanger allows you to mount and store your luggage box, tray, kayak or anything up to 80kg / 176lb securely.



23.4 KAYAK BOW STRAP

RBAS1, RBAS2

Includes a 3.6m tie down strap and anchor point strap to secure your kayak in transit.



23.5 MULTI PURPOSE HOLDER

RMPHU

Perfect to transport fishing rods, ski poles, kayak paddles and more.



23.6 ANCHOR STRAP

RBAS, RAS

Provides an anchor point for long loads when no other tie off points are available.

24.0 FISHING ROD HOLDERS

OUR LARGE RANGE OF RHINO-RACK® KAYAK AND CANOE CARRIERS ARE PERFECT FOR ALL TYPE OF WATER CRAFTS.



For product numbers and specification, see page 117



24.1 PIONEER FISHING ROD HOLDER BRACKET

43159

Mount a Rhino-Rack Fishing Rod Holder (Small) to the side of your Rhino-Rack Pioneer system.



24.2 FISHING ROD HOLDER

572

Provides a convenient way to transport your fishing rods on your next fishing trip.

WHAT IS THE BEST 'LIFTER' FOR ME?

Just like understanding what racks you might need for your vehicle by going through the six questions on page 6, finding out the best lifting accessory for you is just as important and easy. The two main considerations are first, what size/weight is the object you plan to carry? Second, how likely are you to be alone when lifting & loading the object?

Designed to protect you, your vehicle and those around you, Rhino-Rack® has plenty of accessories to help get your gear up and safely secured to the roof of your vehicle. Most importantly, we design these products so one person can get it done with ease. Loading on the side or the rear of the vehicle is also covered, plus if you need extra tie downs, you will find more load securing options from page 89. We love the outdoors so it is important to us you spend more time enjoying it than missing out by not getting your gear there safely or spending way too much time loading and unloading.



25.1 UNIVERSAL SIDE LOADER

RUSL

The Rhino-Rack® Universal Side Loader is incredibly useful when loading your SUP, Longboard, Kayak, Canoe or any other long load. Designed for single person operation, it is a simple process. Set up your Universal Side Loader then lift one side of your load onto the accessory using it as a pivot to load the other end onto the crossbars.

25.0 KAYAK LOADERS

OUR RANGE OF PRODUCTS THAT HELP YOU EASILY LOAD KAYAKS ON TO YOUR VEHICLE'S ROOF.



For product numbers and specification, see page 118



25.2 NAUTIC KAYAK LIFTER

NKL

The Nautic Kayak Lifter is a complete system for loading and unloading and is perfect for heavier kayaks.

Features:

- Quick set up.
- Fits most popular roof racks.
- No drilling required in kayak.
- Lifts kayaks up to 80kg.
- Height adjustable to suit various vehicle heights.
- Easy slide ramps.
- Corrosion resistant.
- UV protection.
- 5 year warranty.
- Designed & built in Australia.

Kit includes:

- 2 adjustable alloy ramps.
- 2 alloy roller support bars.
- Manual Winch.
- Hardware.
- 8m non stretch marine rope.
- Harness Kit (includes 6 straps).



25.3 T-LOAD HITCH MOUNT

RTL002

The single person use T-Load mounts to a 2 Hitch and features an anti-swivel plate designed to stop any sway. Simply lower the T-Load and using it as a leverage load your kayak, canoe, ladder or any long and heavy gear onto your vehicle's roof with ease.

Kit includes:

- Suits Rhino-Rack Vortex and Heavy Duty crossbars
- Fits 2 Inch Hitches
- 1 x Rhino-Rack Vortex crossbar
- 1 x T-Load Sling Kit (RTLK)
- 1 x Fitting Kit
- 1 x Non slip mat





WATER - TECH SPECS



Check your vehicle manufacturer's handbook for your car's on-road and off-road roof load rating.

REF	PRODUCT	PART #.	HOLDS	STRAPS	LOAD	WTY	NOTES	RECOMMENDED ACCESSORIES
22.1	Lockable Kayak Carrier - Side Loading	580	1	4	60KG/132lbs	5yrs	Off-road load rating is 30kg/66lbs, Masterkey compatible.	HD-FK2, RTD25-55L, RWHL,S, RBAS, RBAS1, RMPHU
22.1	Lockable Kayak Carrier - Rear Loading	581	1	4	60KG/132lbs	5yrs	Off-road load rating is 30kg/66lbs, Masterkey compatible.	HD-FK2, RTD25-55L, RWHL,S, RBAS, RBAS1, RMPHU
22.2	Universal Kayak Carrier - Side Loading	570	1	4	60KG/132lbs	5yrs	Off-road load rating is 30kg/66lbs, Fits bar max 100mm/4" wide, 36mm/1.4" tall, Security fasteners.	HD-FK1, RTD25-55L, RWHL,S, RBAS, RBAS1, RMPHU
22.2	Universal Kayak Carrier - Rear Loading	571	1	4	60KG/132lbs	5yrs	Off-road load rating is 30kg/66lbs, Fits bar max 100mm/4" wide, 36mm/1.4" tall, Security fasteners.	HD-FK1, RTD25-55L, RWHL,S, RBAS, RBAS1, RMPHU
22.3	Nautic Stack	S520	4	4	75KG/165lbs	5yrs	Off-road load rating is 38Kg/84lbs, C Channel and Universal Mounting.	RTD25-55L, RWHL,S, RBAS, RBAS1, RMPHU
22.4	Fold-able 'J' Style	S512	1	4	45kg/99lbs	3yrs	Off-road Rating is 23Kgs/50lbs, Fits bar max 100mm/4" wide, 36mm/1.4" tall, Include paddle holder.	S512X, KC-FK8, KC-FK9, KC-FK10 RTD25-55L, RWHL,S, RBAS, RBAS1, RMPHU
22.5	Kayak Carrier Extension	S512X	1	4	30kg/66lbs	3yrs	Off-road Rating is 15Kgs/33lbs, Fits bar max 100mm/4" wide, 36mm/1.4" tall	Paddle cradle on the S512 cannot be used while the S512X extension is fitted
22.6	Fixed 'J' Style	S510	1	4	45kg/99lbs	3yrs	Off-road Rating is 23Kgs/50lbs, Fits bar max 100mm/4" wide, 36mm/1.4" tall.	KC-FK8, KC-FK9, KC-FK10 RTD25-55L, RWHL,S, RBAS, RBAS1, RMPHU
23.1	Wrap Pad	RWP01	1	0	75kgs/165lbs	1yr	380mm/15" in length and suits VA Bars.	RLH1,2 RTD25-55L, RBAS, RBAS1, RMPHU
23.1	Wrap Pad	RWP03	1	2	75kgs/165lbs	1yr	550mm/22" in length.	RLH1,2 RTD25-55L, RBAS, RBAS1, RMPHU
23.1	Wrap Pad	RWP04	1	2	75kgs/165lbs	1yr	700mm/28" in length.	RLH1,2 RTD25-55L, RBAS, RBAS1, RMPHU
23.1	Wrap Pad	RWP05	1	2	75kgs/165lbs	1yr	850mm/33" in length.	RLH1,2 RTD25-55L, RBAS, RBAS1, RMPHU
23.2	VA Underside Tie Down Point	S606				5yrs		
23.3	Wall Mount	RWHL	1	1	80kg/176lbs	3yrs	Internal or external use.	
23.4	Kayak Bow Strap	RBAS1		1		1yr	Suitable for both Bow and Stern bonnet and boot. See instructions for reference.	
23.4	Kayak Bow Strap	RBAS2		1		1yr	Paddle board bonnet tie down strap	
23.5	Multi Purpose Holder R	RMPHU	1-2 Paddles	0	7kg/15lbs	3yrs	Can be fitted to Pioneer and C channel, HD-FK5 fitting kit is required to attach this product to the HD Bars C channel or HD-FK1 for HD universal mounting	RTD35P
23.6	Anchor Strap	RBAS		1		1yr	Can be used for either bonnet or boot.	
23.6	Anchor Strap	RAS		2		1yr	Used for permanent mounting inside bonnet	

WATER - TECH SPECS



Check your vehicle manufacturer's handbook for your car's on-road and off-road roof load rating.

REF	PRODUCT	PART #	HOLDS	STRAPS	LOAD	WTY	NOTES	RECOMMENDED ACCESSORIES
24.1	Pioneer Fishing Rod Holder Bracket	43159				3yrs		
24.2	Fishing Rod Holder	572	2 fishing rods			5yrs		Masterkey compatible
25.1	Universal Side Loader	RUSL			60kg/132lbs	3yrs	Clamps included to suit Rhino VA/HD/Euro, Thule, Rola, Prorack.	
25.2	Nautic Kayak Lifter	NKL	1 kayak		80kg/176lbs	5yrs	Requires a roof rack system with bar overhang of 100mm. Not recommended for our VA 2500 RS, RSS, RSF, RSP, SG systems.	NKL-FK1, NKL-FK2, NKL-FK3, NKL-FK5, NKL-FK5, RTD25I
25.3	T-Load Hitch Mount	RTL002			60kg/132lbs	3yrs	Adjustable height and tilt position (min height: 950mm, max height: 1540mm)	





📍 LOVELAND PASS, COLORADO



SNOW

- 122. Ski & Snowboard Carriers
- 122. Snow - Tech Specs

26.0 SKI & SNOWBOARD CARRIER

WE HAVE A RANGE OF PRODUCTS FOR CARRYING ONE TO SIX SKIS.



26.1 SKI & SNOWBOARD CARRIER

572, 573, 574, 576

- Available in 4 different sizes.
- Sold in a pair.
- Easy to use locking mechanism.
- Universal fit to suit the most popular roof racks on the market.
- Rubber grip profile protects your skis and snowboards.



26.2 MULTI-PURPOSE HOLDER

RMPHU

- Made from strong glass reinforced nylon.
- The strap is made from thermoplastic vulcanizate rubber.
- Load Rating of up to 7kg / 15.5lb.
- The fastest way to strap down and transport.
- Left or right side fastening with ease.
- The internal width is 55mm.

SNOW - TECH SPECS

REF	PART #	INT DIMENSION	SKI	SNOWBOARDS	FISHING RODS
26.1	572	250mm / 9.84"	2	-	4
26.1	573	325mm / 12.8"	3	2	4
26.1	574	500mm / 19.69"	4	2	-
26.1	576	695mm / 27.36"	6	4	-
26.2	RMPHU	-	1	-	3



BIKES

- 126. Roof Mounted Bike Carriers
- 127. Rear Mounted Bike Carriers
- 128. Bike Carrier Accessories
- 129. Masterkey™
- 130. Bikes - Tech Specs



📍 BLACKHAWK, COLORADO



27.0 ROOF MOUNTED BIKE CARRIERS

BIKE CARRIER SOLUTIONS
SUITABLE FOR EVERYONE!



27.1 HYBRID

RBC050

- Multiple locking system, to keep your bike and racks as secure as possible.
- Ergonomically shaped handle with release trigger and locking system.
- Premium aluminum casting and tray.
- Wheel straps secure bike firmly to your roof.
- Universal hardware.
- Fits to C-Channels (use #RBCA034)
- Fits from 20" kids bikes to 29" mountain bikes.
- Suitable for bikes up to 21kg / 45lb.
- Minimum crossbar spacing 550mm / 21" and maximum is 1070mm / 42".
- Fat Bike Adapter also available.



27.2 MOUNTAIN TRAIL

RBC035

- Low profile.
- Universal crossbar fit.
- Fits all wheel dimensions.
- Locks included to secure carrier to both the bicycle and roof bars.
- Easily adjustable locking skewer.
- Fits discs and standard brake systems.



27.3 ROAD WARRIOR

RBC036

- Low profile.
- Suits most "C" Channel crossbar profiles.
- Rear wheel strap fits all wheel dimensions.
- Lockable.
- Suits most types of bikes with either standard or disc brake systems.
- Adjustable locking skewer.



27.4 PIONEER THRU AXLE BIKE CARRIER

43233

The Pioneer Thru Axle Bike Carrier allows you to attach a thru axle bike directly to a Pioneer system. The bike mount comes with 15mm x 100mm thru axle insert, with additional sizes available for purchase.



28.0 REAR MOUNTED BIKE CARRIERS

BIKE CARRIER SOLUTIONS
SUITABLE FOR EVERYONE!



28.1 HITCH MOUNT

RBC045

- Fits up to 2 Bikes
- Hitch Mounted Carrier
- Fits 2 inch Hitch Receivers
- Adjustable Cradles designed to fit all types of bike frames
- Foam padding for extra protection
- Folding top arm and pull latch for access to rear life gate on vehicle.



28.2 SPARE WHEEL BIKE CARRIER

RBC025

- The Spare Wheel Bike Carrier utilizes your rear spare wheel by allowing two bikes to be easily transported.
- Bikes are secured by thick rubber straps
- Engineering allows two bikes to be carried on the spare rear wheel
- Folds down when not in use
- Can be adjusted to offset your spare wheel on either the right or left side
- Suitable for larger vehicles, 4wds and any car with a rear spare wheel
- The Spare Wheel Bike Carrier can hold a maximum of two adult bikes
- Not suitable for heavy off road use.



29.0 BIKE CARRIER ACCESSORIES

ACCESSORIES THAT WILL COMPLIMENT YOUR BIKE CARRIERS.

 For product numbers and specification, see page 130



29.1 VA CABLE CORE LOCKDOWNS

(0.6M) 43205

The VA Cable Core Lockdown is a cable lock that fits neatly into the C channel on your Vortex crossbars or Pioneer system. The VA Cable Core Lockdown can be used to lock the awning channels to your Rhino-Rack roof racks.



29.2 BAR ADAPTER

RBCA021

Allows your rear mounted bike carrier to be used with oversized bike frames and certain children's and ladies bikes.



29.3 MULTI-AXLE ADAPTER

RBCA030

Convert your existing Rhino-Rack fork mount bike carrier to work with new and emerging thru-axle standards.



29.4 THRU AXLE INSERT

(15MM X 100MM)

RBCA040

The Rhino-Rack Thru Axle Insert allows 15mm x 100mm thru-axle bikes to fit the Multi-Axle adapter and attach to existing bike carriers.



29.5 THRU AXLE INSERT

(15MM X 110MM)

RBCA036

Allows 15mm x 110mm thru-axle bikes to fit the Multi-Axle adapter and attach to existing bike carriers.



29.6 THRU AXLE INSERT

(15MM X 150MM)

RBCA037

Allows 15mm x 150mm thru-axle bikes to fit the Multi-Axle adapter and attach to existing bike carriers.



29.7 THRU AXLE INSERT

(20MM X 110MM)

RBCA038

Allows 20mm x 110mm thru-axle bikes to fit the Multi-Axle adapter and attach to existing bike carriers.



29.8 THRU AXLE INSERT

(9MM X 135MM)

RBCA039

Allows 9mm x 135mm thru-axle bikes to fit the Multi-Axle adapter and attach to existing bike carriers.



29.9 THE CLAW (FORK MOUNTED BIKE RACK)

RBCA010

The Claw (RBCA010)™ is a Fork Mounted Bike Carrier that can be fixed to a Truck/Pick Up Truck tray, trailer or van. The Claw can also be fixed to a wall at home for additional storage space.



29.11 FAT BIKE ADAPTER KIT (SUITS RBC050)

RBCA033

The Fat Bike Adapter works in conjunction with the RBC050 Hybrid / RockyMounts Bike Carrier. With a few simple changes to the system like wider wheel supports and extension straps the Hybrid / RockyMounts Bike Carrier is able to transport your Fat Bike.



29.13 HEAVY DUTY FIT KIT FOR HYBRID BIKE CARRIER

RBCA035

This fitting kit allows you to fit the Hybrid / RockyMounts Bike Carrier to your Heavy Duty crossbars.



29.10 2 INCH HITCH RECEIVER LOCKING PIN

RBCA025

The 2 Hitch Receiver allows you to secure your 2 receiver bike racks (RBC038) to your vehicle - greatly reducing the risk of theft.



29.12 C-CHANNEL FIT KIT FOR HYBRID BIKE CARRIER

RBCA034

This is the fitting kit you will need to fit your Hybrid / RockyMounts Bike Carrier to the C-Channel of your Vortex cross bar.



THE KEY TO SOLVING ALL YOUR PROBLEMS.

The Rhino-Rack® Masterkey™ system allows you to change the locks in your Rhino-Rack® roof racks and accessories to eliminate carrying multiple keys.

- Each pack contains 2 molded Masterkeys in blue for easy identification.
- One key for all your Rhino-Rack® products.
- Simply replace the lock barrels in all your Rhino-Rack® products.
- Barrel sets available in 2, 4 & 8 packs.



COMPATIBLE PRODUCTS:

Roof Rack	2500 System, RLT600, SRB Leg, VA-SEC2/4
Watersport	580, 581
Ski Carrier	572, 574, 576
Bike Carrier	RBC035, RBC036, RBC050
Securing	RTD35L, RTD45L, RTD55L, 43205, 43206, 43207, 43208, 43209, 43210
Other	Conduit Locking End Cap

BIKES - TECH SPECS



Check your vehicle manufacturer's handbook for your car's on-road and off-road roof load rating.

REF	PRODUCT	PART #	HOLDS	DIMENSIONS	MAX LOAD	Weight	WTY	NOTES
27.1	Hybrid Bike Carrier	RBC050	1	980mm x 330mm x 115mm / 38.6" x 13" x 4.5"	21kg / 45lb	7.2kg / 15lbs	5yrs	Fat Bike Adapter also available with part #RBCA033. Use #RBCA035 for Heavy Duty Bar.
27.2	Mountain trail - Roof	RBC035	1	400mm x 180mm x 80mm / 55.1" x 7.1" x 3.1"	15kg	4kg / 8.82lbs	5yrs	Minimum cross bar spacing 550mm / 21.6", maximum 1010mm / 39.7"
27.3	Road Warrior - Roof	RBC036	1	1400mm x 180mm x 80mm / 55.1" x 7.1" x 3.1"	15kg	2.5kg / 5.51lbs	5yrs	Minimum cross bar spacing 550mm / 21.6", maximum 1010mm / 39.7"
27.4	Pioneer Thru Axle Bike Carrier	43233	1	NA	17kg / 37.4lbs	2kg / 4.4lbs	3yrs	Comes with 15mm x 100mm thru axle insert, other sizes available to purchase.
28.1	Hitch Mount Bike Carrier - Take 2	RBC045	2	960 x 410 x 180 mm / 37.8 x 16.1 x 7.1 in	30kg/66lb	15.14 kg / 33.38 lbs	3yrs	Bike lock included for security. Adjustable straps and cradles to suit all frame shapes
28.2	Spare Wheel Bike Carrier - Rear	RBC025	2	750mm x 600mm x 120mm / 29.5" x 23.6" x 4.7"	30kg/66lb	7.3kg / 16lbs	3yrs	Not recommended for heavy off-road use or rear mounting on caravans
29.1	VA Cable Core Lockdowns	43205	NA	Length: 60cm		0.5kg / 1.1lbs	3yrs	Fits Vortex bars
29.2	Bar Adapter	RBCA021	NA	300mm x 150mm x 50mm / 11.8" x 5.9" x 2"	-	1.1kg / 2.4lbs	3yrs	Allows rear mounted bike carrier to be used with oversized frames and certain kids/ladies bikes
29.3	Multi Axle Adapter	RBCA030	NA		-	-	3yrs	Converts existing fork mount to work with new thru-axle standards.
29.4	Thru Axle Insert	RBCA040	NA	15 x 100mm / 05" x 3.9"			3 yrs	Allows thru-axle bikes to fit the multi axle adapter
29.5	Thru Axle Insert	RBCA036	NA	15 x 110mm / 0.5" x 4.3"	-	-	3yrs	Allows thru-axle bikes to fit the multi axle adapter.
29.6	Thru Axle Insert	RBCA037	NA	15 x 150mm / 0.5" x 5.9"	-	-	3yrs	Allows thru-axle bikes to fit the multi axle adapter.
29.7	Thru Axle Insert	RBCA038	NA	20 x 110mm / 0.8" x 4.3"	-	-	3yrs	Allows thru-axle bikes to fit the multi axle adapter.
29.8	Thru Axle Insert	RBCA039	NA	9 x 135mm / 0.3" x 5.3"	-	-	3yrs	Allows thru-axle bikes to fit the multi axle adapter.
29.9	The Claw (Fork Mounted Bike rack)	RBCA010	1	50.8mm x 304.8mm x 152.4mm / 2" x 12" x 6"		0.2kg / 0.4lbs	5yrs	Fasten your bike to the back of a truckbed tray, trailer or van
29.10	2 Inch Hitch Receiver Locking Pin	RBCA025	NA			0.01kg / 0.2lbs	3yrs	
29.11	Fat Bike Adapter Kit	RBCA033	NA			0.4kg / 0.9lbs	3yrs	Fits RBC050. Fits wheels up to 12.7cm / 5".
29.12	C-Channel Fit kit For Hybrid Bike Carrier	RBCA034	NA			0.01kg / 0.2lbs		Allows you to fit the Hybrid / RockyMounts Bike Carrier to Vortex crossbars
29.13	Heavy Duty Fit kit For Hybrid Bike Carrier	RBCA035	NA			0.01kg / 0.2lbs		Allows you to fit the Hybrid / RockyMounts Bike Carrier to Heavy Duty





[Learn more about roof racks and cargo carriers we have.](#)