

X54205
X51205



X54205
X51205

2007-08 GMC SIERRA 1500

INSTALL INSTRUCTIONS FOR RBP GRILLE KIT NUMBERS: 154205, 254205, 151205, 251205, 351205, 451205

FOR USE ON RL/RX SERIES 1PC MESH GRILLE, INSERT

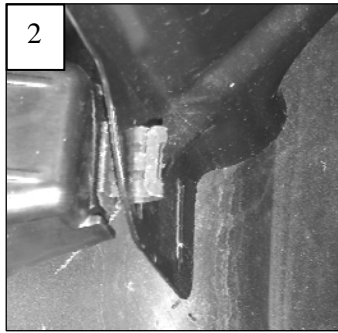
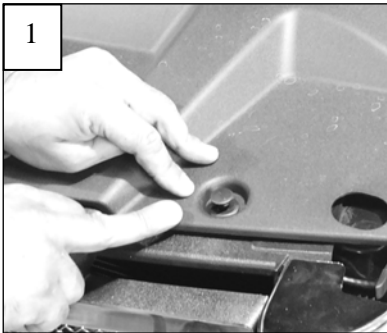
Recommended Tools:

Flat / Slotted Screwdriver
10mm Socket & Ratchet
Die Grinder or Jig Saw
Drill and 1/8" Drill Bit

Parts List / Hardware:

| | |
|-------------------|------------------------|
| 1 RBP Grille | 2 6/32 Nylon Lock Nuts |
| 7 #10 X 1" Screws | 2 L Brackets |
| 7 #10 Flat Nuts | 2 #10 Flat Washers |

STEP 1: Read and understand all instructions before attempting the install of this grille. Be sure that the package of hardware matches the hardware list as listed above. Next, test fit the RBP grille to the vehicles factory openings. You are now ready for the install:



Step 2: Remove plastic rivets securing the radiator cover; on top of the grille (1). Now remove the four 10mm bolts along the top of the grille. The grille has six metal clips that clip into the core support (2); two behind the GMC logo and four along the bottom. Pull the grille forward; use a slotted screwdriver to release the clips and remove the grille.



Step 3: This step cuts the bars from factory grille. Apply masking tape to the chrome or painted perimeter of the grille. The plastic bar along the top that bolts to the core support must be retained to install the grille. Do not cut this bar from the factory grille. Cut the four vertical bars 1/2" below the upper cross bar. Now cut the center cross bars from the grille; make three cuts on each end. Make your last four cuts along the bottom. The center bars securing the GMC logo will now separate from the grille (3).

Step 4: Use a die grinder or file to smooth any rough edges around the opening. Test fit the grille in place; smooth any remaining rough edges (4).

Step 5: Center the mesh grille into the factory grille surround (4). Make sure the grille is centered; mark the mounting holes in the mounting tabs to the chrome factory grille. Drill a 1/8" hole at each mark. Use the screws and flat nuts to secure the grille to the surround (5). Attach the short end of the L brackets to the two studs on top of the mesh grille using the 6-32 nuts and washers (snug the brackets but do not fully tighten).



Step 6: Re-install the grille assembly onto the vehicle; attach the clips along the bottom. Align the L brackets on top to the factory mounting 10mm bolt mounting holes in the center of the core support. Tighten the lock nuts securing the brackets to the grille. Re-install the grille and radiator cover onto the vehicle.