



PERFORMANCE SUSPENSION & SHOCKS

PERFORMANCE TRUCK PRODUCTS



2018-14 CHEVROLET SILVERADO / GMC SIERRA 1500 4WD

6-IN. SUSPENSION SYSTEM

Fits up to 35-in. tires

Will not affect the Stabilitrak control system
One-piece reinforced subframe, made from high-strength, low-alloy steel & DOM tubing

Allows for reuse of the stock wheels¹

CNC machined extended steering knuckles
Limited Lifetime Warranty**

PART No. RS66301B

Silverado 1500 4WD - Steel Upper Control Arms

PART No. RS66302B

Silverado/Sierra 1500 4WD - Alum. or Stamped Steel Upper Control Arms

Shocks sold separately. Kit comes with strut towers to re-use factory struts:

RS5000™X	RS7000®MT	RS9000™XL
Front RS55832	Front RS7832	Front RS999832
Rear RS55297	Rear RS7297	Rear RS999297

¹Use of wheel spacer on front wheels is required. Spacer kit provided. This lift was FMVSS126 certified with BFG 325/60/20 KM2 tires and UWC Black Assassin 20x9-in. Wheels, 6-5.5,+10 offset.



LIFT YOUR RIDE.

CHEVROLET SILVERADO / GMC SIERRA 1500 2/4WD 2013-07

4-IN. SUSPENSION SYSTEM

Fits up to 35-in. tires

Will not affect the Stabilitrak control system
One-piece reinforced subframe, made from high-strength, low-alloy steel & DOM tubing

Allows for reuse of the stock wheels

CNC machined extended steering knuckles
Limited Lifetime Warranty**

PART No. RS6583B

2013-07 Silverado/Sierra 1500

Shocks sold separately:

RS5000™X	RS7000®MT	RS9000™XL
Front RS55786	Front RS7786	Front RS999786
Rear RS55297	Rear RS7297	Rear RS999297



COMPATIBLE WITH
BOTH 2WD AND 4WD



UPGRADE YOUR SHOCKS.

YEAR	MODEL	RAISED HEIGHT	RS5000™X		RS7000®MT		RS9000™XL	
			Front	Rear	Front	Rear	Front	Rear
2018-14	Silv/Sierra 1500 2/4WD - Exc. ZX3 ERC & AWD	0-in.	RS55830	RS55198	RS7830	RS7198	RS999830	RS999198
2013-07	Silv/Sierra 1500 4WD - Exc. ZX3 QuadraSteer & AWD	0-in.	RS55784	RS55198	RS7784	RS7198	RS999784	RS999198
2014-07	Tahoe - Exc. Autoride, Self-Leveling & Police Package	0-in.	RS55784	RS55262	RS7784	RS7262	RS999784	RS999262
2007-99	Silv/Sierra 1500 4WD Classic - Exc. 1500HD & ERC	0-in.	RS55265	RS55198	RS7371	RS7198	RS999265	RS999198
2007-99	Silv/Sierra 1500 4WD Classic - Exc. 1500HD & ERC	1 - 2.5-in.	RS55371 ³¹³	RS55198	RS7371 ³¹³	RS7198	-	-
2007-99	Silv/Sierra 1500 4WD Classic w/ Rancho RS6545	4-in.	RS55268	RS55269	RS7268	RS7269	RS999268	RS999269
2007-99	Silv/Sierra 1500 4WD Classic	5 - 6-in.	-	RS55267	RS7268	RS7269	RS999057	RS999267
2007-05	Silv/Sierra 1500HD 4WD Crew Cab - Exc. ERC	0-in.	-	RS55274	RS7295	RS7274	RS999295	RS999274

³¹³ Not for use with aftermarket shock spacers or relocation brackets. Trimming or modification may be required to provide proper tire clearance. Actual tire size varies between manufacturers. B designates black finish.



Rancho RS66301B with 37-in. tires
Trimming or modification may be required to provide proper tire clearance.
Actual tire size varies between manufacturers. B designates black finish.

LEVEL IT

2.25-IN. TORSION KEY SYSTEM

Fits up to a 33-in. tire
 LEVEL IT Torsion Keys
 Extended length RS5000™X front shocks included
 Forged construction - Stronger than O.E.
 Rear Shocks sold separately

PART No. RS66351R5 2.25-in. LEVEL IT System
 2019-11 Silverado/Sierra 2500/3500HD 2/4WD

Front RS5000™X Shocks included: **RS55378**
 Rear RS5000™X Shocks sold separately: **RS55379**

PART No. RS66350R5 2.25-in. LEVEL IT System
 2010-01 Silverado/Sierra 2500/3500HD 2/4WD
 9200 GVW - Exc. Autoride & Air Leveling

Front RS5000™X Shocks included: **RS55370**
 Rear RS5000™X Shocks sold separately: **RS55274**

PART No. RS66300R5 2.25-in. LEVEL IT System
 2007-99 Silverado/Sierra 1500 4WD
 1500 Classic 4WD - Exc. 1500HD & Electric Ride Control

Front RS5000™X Shocks included: **RS55371**
 Rear RS5000™X Shocks sold separately: **RS55198**



LEVEL YOUR RIDE.

UPGRADE YOUR SHOCKS.

YEAR	MODEL	RAISED HEIGHT	RS5000™X		RS7000®MT		RS9000™XL	
			Front	Rear	Front	Rear	Front	Rear
2013-07	Silv/Sierra 1500 4WD - Exc. ZX3 Quadrasteer & AWD	0-in.	RS55784	RS55198	RS7784	RS7198	RS999784	RS999198
2014-07	Tahoe - Exc. Autoride, Self-Leveling & Police Package	0-in.	RS55784	RS55262	RS7784	RS7262	RS999784	RS999262
2007-99	Silv/Sierra 1500 4WD Classic - Exc. 1500HD & ERC	0-in.	RS55265	RS55198	RS7371	RS7198	RS999265	RS999198
2007-99	Silv/Sierra 1500 4WD Classic - Exc. 1500HD & ERC	1 - 2.5-in.	RS55371 ³¹³	RS55198	RS7371 ³¹³	RS7198	-	-
2007-99	Silv/Sierra 1500 4WD Classic w/ Rancho RS6545	4-in.	RS55268	RS55269	RS7268	RS7269	RS999268	RS999269
2007-99	Silv/Sierra 1500 4WD Classic	5 - 6-in.	-	RS55267	RS7268	RS7269	RS999057	RS999267
2007-05	Silv/Sierra 1500HD 4WD Crew Cab - Exc. ERC	0-in.	-	RS55274	RS7295	RS7274	RS999295	RS999274

³¹³ Not for use with aftermarket shock spacers or relocation brackets. Trimming or modification may be required to provide proper tire clearance. Actual tire size varies between manufacturers. B designates black finish.



COIL SPRINGS ARE NOT INCLUDED

LEVEL IT

2-IN. SUSPENSION SYSTEM

Fits up to a 33-in. tire
 Rancho quickLIFT™ RS7000®MT Monotube Struts
 Sway bar spacers included
 "Level It" 2-in. max lift
 Rear Shocks sold separately

PART No. RS66304R7
 2018-14 Silverado/Sierra 1500

Front quickLIFT™ RS7000®MT Struts included.
 Rear RS7000®MT Shocks sold separately: **RS7198**

PART No. RS66303R7
 2013-07 Silverado/Sierra 1500

Front quickLIFT™ RS7000®MT Struts included.
 Rear RS7000®MT Shocks sold separately: **RS7198**



LEVEL IT

1.75-IN. SUSPENSION SYSTEM

Levels the front of your vehicle
 Monotube high pressure struts look great
 Sway bar spacers included
 Installation instructions
 Limited Lifetime Warranty**
 Optional upgrade: Rancho rear Monotube shocks

PART No. RS66305R7
 2019-15 Colorado/Canyon

Front quickLIFT™ RS7000®MT Struts included.
 Rear RS7000®MT Shocks sold separately: **RS7023**



COIL SPRINGS ARE NOT INCLUDED

Lift height may vary depending on application.

2019-11 CHEVROLET SILVERADO / GMC SIERRA 2500HD 4WD

4-IN. SUSPENSION SYSTEM

Fits up to 35-in. tires

Torsion bar relocation brackets

One-piece reinforced subframe, made from

high-strength, low-alloy steel & DOM tubing

No drivetrain or exhaust modifications required

Extended cast steering knuckles

Tubular aft braces

Maintains factory location of rack and pinion

Maintains factory alignment specifications

PART No. **RS6554B** (Shown)

4-in. TORSION BAR RELOCATION SUSPENSION SYSTEM

PART No. **RS6564B**

4-in. TORSION BAR DROP SUSPENSION SYSTEM

Shocks sold separately (RS6554B or RS6564B):

RS5000™	RS7000®MT	RS9000™XL
Front RS5380	Front RS7380	Front RS999380
Rear RS5381	Rear RS7381	Rear RS999381



LIFT YOUR RIDE.

CHEVROLET SILVERADO / GMC SIERRA 2500 4WD 2010-01

4-IN. SUSPENSION SYSTEM

Fits up to 35-in. tires

Torsion bar relocation brackets

One-piece reinforced subframe, made from

high-strength, low-alloy steel & DOM tubing

No drivetrain or exhaust modifications required

Allows for reuse of the stock wheels

Extended cast steering knuckles

Tubular aft braces

Maintains factory location of rack and pinion

Maintains factory alignment specifications

PART No. **RS6548B**

Shocks sold separately:

RS5000™X	RS7000®MT	RS9000™XL
Front RS55289	Front RS7296	Front RS999289
Rear RS55297	Rear RS7297	Rear RS999297



UPGRADE YOUR SHOCKS.

YEAR	MODEL	RAISED HEIGHT	RS5000™X		RS7000®MT		RS9000™XL	
			Front	Rear	Front	Rear	Front	Rear
19-11	Silverado/Sierra 2500HD	0-in.	RS55377	RS55379	RS7377	RS7379	RS999377	RS999379
19-11	Silverado/Sierra 2500HD	1.25-in.	RS55378	RS55379	-	RS7379	-	RS999379
10-01	Silv/Sierra 2500HD - 9200 GVW Exc. Autoride & Air Leveling	0-in.	RS55288	RS55274	RS7370	RS7274	RS999288	RS999274
10-01	Silverado/Sierra 2500HD	1 - 2.5-in.	RS55370	RS55274	RS7370	RS7274	-	-
10-01	Silv/Sierra 2500HD - 9200 GVW Exc. Autoride & Air Leveling	5 - 6-in.	-	RS55056	RS7055	RS7056	RS999055	RS999056

Rancho RS6554B with 35-in. tires
Trimming or modification may be required to provide proper tire clearance.
Actual tire size varies between manufacturers. B designates black finish.

Rancho RS6548B with 35-in. tires.

4-IN. SUSPENSION SYSTEM

The engineers at Rancho® have designed a **NEW** 4-in. Suspension System for 2018-2013 RAM 1500 4WD Gas and Eco-Diesel models. The system includes Rancho's fully boxed welded subframe for superior strength and ductile Iron extended steering knuckles. The performance Suspension kit also contains a pair of inner and outer tie-rods, brake lines, sway bar extensions and all necessary hardware. For the rear, the Rancho kit includes a pair of extended length coil springs and required installation hardware. For a complete installation, a separate set of RS5000™X extended travel front shocks and set of RS5000™X rear shocks need to be purchased. The Rancho brand offers a Limited Lifetime Warranty** for this Suspension System.

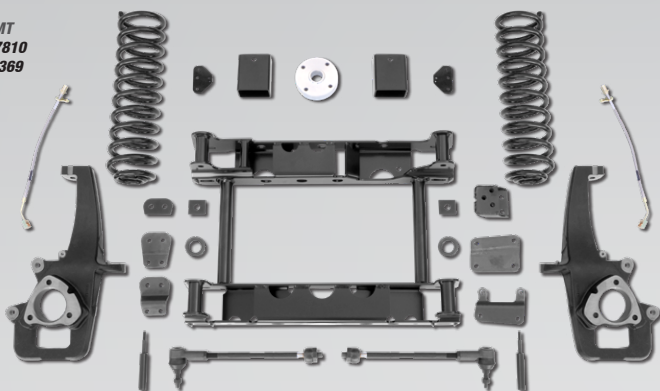
4-in. Suspension System that fits up to 35-in. tires (with minor trimming)
Works with Gas and Eco-Diesel engines
Covered by Rancho's Limited Lifetime Warranty**

PART No. RS66402B

**Gas, Eco-Diesel and 8-speed Transmission -
Exc. Air Suspension**

Shocks sold separately :

RS5000™X RS7000®MT
Front RS55810 Front RS7810
Rear RS55369 Rear RS7369



UPGRADE YOUR SHOCKS.

YEAR	MODEL	RAISED HEIGHT	RS5000™X		RS7000®MT		RS9000™XL	
			Front	Rear	Front	Rear	Front	Rear
18-09	Ram 1500 4WD	0-in.	RS5808	RS5367	RS7808	RS7367	RS999808	RS999367
08-06	Ram 1500 4WD Mega Cab - Exc. AWD	0-in.	RS55221	RS55269	RS7043	RS7269	RS999221	RS999269
08-06	Ram 1500 4WD - Exc. Mega Cab and AWD	0-in.	-	RS55274	-	RS7274	RS999788	RS999274
08-06	Ram 1500 Mega Cab w/ Rancho RS6579B System	4-in.	RS55317	-	RS7317	-	RS999317	RS999269

Rancho RS66402B with 34.5-in. tires. Trimming or modification may be required to provide proper tire clearance. Actual tire size varies between manufacturers. B designates black finish.

4.5-IN. COMPETITION RADIUS ARM SUSPENSION SYSTEM

Rancho® is proud to offer a **NEW** 4.5-in. Suspension System for the Ram 2500 4WD Diesel. The 4.5-in. Rancho Suspension Competition Radius Arm Kit for the Ram 2500 features front coil springs, competition style radius arms, trackbar bracket, sway bar relocation brackets, brake line brackets, bump stops and a forged pitman arm. In the rear it features progressive rate coil springs, sway bar drop brackets, rear trackbar bracket, bump stops and rear brake line brackets. The competition style radius arms are longer in length and have adjustment tabs to allow the re-use of factory cam bolts to meet caster specifications. This kit is precision engineered to be 100-percent compatible with the Ram factory electronic stability system, and has been FMVSS126 certified. The kit was designed with 37-in. tires and 20-in. wheels with 5.5-in. of backsparing.

System was test fit with 37-in. tires
Competition style tubular radius arms
Rancho front coil springs,
Progressive Rate rear coil springs
High-strength steel sway bar spacers
Track bar relocation brackets
New forged pitman arm



PART No. RS66453B

Diesel, Single Rear Wheel

Shocks sold separately :

RS5000™X RS7000®MT RS9000™XL
Front RS55048 Front RS7048 Front RS999048
Rear RS55048 Rear RS7048 Rear RS999048

20-in. wheel with 5.5 backsparing. Optional 18-20-in. wheel with 5.5 - 6.5-in. backsparing. 4.5-in. raised height may vary based on vehicle options and packages.



4.5-IN. DROP BRACKET SPORT SUSPENSION SYSTEM

Rancho is proud to offer a new 4.5-in. Sport Suspension System for the Ram 2500 4WD Diesel. The 4.5-in. Rancho Suspension Drop Bracket Kit for the Ram 2500 features front coil springs, radius arm drop brackets, trackbar bracket, sway bar relocation brackets, brake line brackets, bump stop spacers and a forged pitman arm. In the rear it features coil spring spacers, sway bar drop brackets, rear trackbar bracket, bump stop spacers and rear brake line brackets. The kit was designed with 37-in. tires and 20-in. wheels with 5.5-in. of backsparing.

System was test fit with 37-in. tires
Radius arm drop brackets
Rancho front coil springs
High-strength steel sway bar spacers
Track bar relocation brackets
New forged pitman arm

PART No. RS66452B

Diesel, Single Rear Wheel

Shocks sold separately :

RS5000™X RS7000®MT RS9000™XL
Front RS55048 Front RS7048 Front RS999048
Rear RS55048 Rear RS7048 Rear RS999048

20-in. wheel with 5.5 backsparing. Optional 18-20-in. wheel with 5.5 - 6.5-in. backsparing. 4.5-in. raised height may vary based on vehicle options and packages.



LIFT YOUR RIDE.

4-IN. SUSPENSION SYSTEM

Fits up to 37-in. tires
 New heavy-duty tubular-style front links
 Aligns to O.E. specifications - all hardware provided
 Rear leaf spring blocks
 CAD designed components ensure a precise fit
 New forged pitman arm
 Front track bar relocation bracket
 Allows for reuse of the stock wheels

PART No. RS66455B

2013-09 RAM 2500 4WD Diesel

Shocks sold separately:

RS5000™X	RS7000®MT	RS9000™XL
Front RS55317	Front RS7317	Front RS999317
Rear RS55056	Rear RS7056	Rear RS999056

NOW INCLUDES
**COIL SPRINGS &
 ADJUSTABLE CONTROL ARMS**



LIFT YOUR RIDE.



2.5-IN. SUSPENSION SYSTEM

Level the front of your Ram 2.5-inches with the "Level It" System from Rancho®. This Leveling System features Coil Spring Spacers, and tuned RS9000™XL front Shocks to provide superior on-road comfort and off-road performance. The Sway Bar Relocation Brackets insure optimal angles for roll and sway control of your Ram Truck. Rear RS9000™XL Shocks can be purchased separately with this system to complement your front suspension upgrades. The kit was designed with 35-in. tires using 20-in. wheels with 5.5-in. backspacing. This kit allows the reuse of O.E. wheels and tires. The Rancho brand offers a Limited Lifetime Warranty** for this Suspension System.

Rancho front coil spring spacers
 Nine-Position Rancho RS9000™XL Shocks
 High-strength steel sway bar spacers
 Direct bolt-up kit



PART No. RS66454R9

2019-14 RAM 2500/3500 4WD Single Rear Wheel

RS9000™XL Front Shocks included. Rear sold separately:
 RS9000™XL Front Inc. Rear **RS999044**



2.5-IN. SUSPENSION SYSTEM

Fits up to a 35-in. tire
 Rancho front coil springs included
 Rancho RS9000™XL Series front shocks included
 High-strength steel sway bar spacers
 Allows the reuse of the stock wheels
 Direct bolt-up kit

PART No. RS66451R9

2019-14 RAM 2500/3500 Diesel, Single rear wheel

RS9000™XL Front Shocks included. Rear sold separately:
 RS9000™XL Front Inc. Rear **RS999044**

Fits up to a 35-in. tire

Rancho progressive rate front coil springs included
 Rancho RS7000®MT Series front shocks included
 High-strength steel sway bar spacers
 Direct bolt-up kit

PART No. RS66450R7

2013-03 RAM 2500/3500 Diesel

RS7000®MT Front Shocks included. Rear sold separately:
 RS7000®MT Front Inc. Rear **RS7269**

UPGRADE YOUR SHOCKS.

YEAR	MODEL	RAISED HEIGHT	RS5000™X		RS7000®MT		RS9000™XL	
			Front	Rear	Front	Rear	Front	Rear
19-14	Ram 2500 4WD	0-in.	RS55197	RS55044	-	RS7044	RS999197	RS999044
13-09	Ram 2500/3500 4WD w/ Rancho RS6578B or RS6579B	4-in.	RS55317	RS55056	RS7317	RS7056	RS999317	RS999056
13-03	Ram 2500 - Exc. Power Wagon, Cab and Chassis	0-in.	RS55221	RS55269	RS7044	RS7269	RS999221	RS999269
09-05	Power Wagon	0-in.	RS55044	-	RS7044	-	RS999044	RS999058
09-03	Ram 2500 w/ Rancho RS6576	2-in.	RS55044	RS55269	RS7044	RS7269	RS999044	RS999269



Rancho RS66455B with 37-in. tires
 Trimming or modification may be required to provide proper tire clearance.
 Actual tire size varies between manufacturers. B designates black finish.

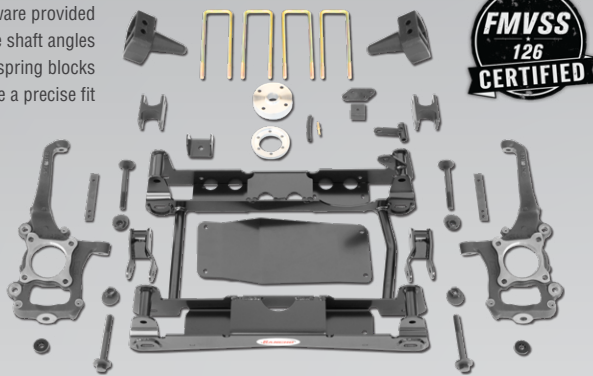
4.5-IN. SUSPENSION SYSTEM PART No. RS66505B

2019-15 F150 4WD - Exc. AWD & SVT Raptor

Shocks/Struts/Strut Tower sold separately:

Strut Tower	RS5000™MX	RS7000®MT	RS9000™XL
Front RS886519	Front RS55838	Front RS7838	Front RS999838
Rear -	Rear RS55287	Rear RS7287	Rear RS999287

RS886519 is a strut spacer.



LIFT YOUR RIDE.

Fits 35-in. tires
Will not affect the AdvanceTrac® with RSC® system
One-piece reinforced subframe, made from high-strength, low-alloy steel & DOM tubing
Maintains factory location of rack and pinion and uses O.E. tie rod ends
CNC machined extended steering knuckles
Aligns to O.E. specifications - all hardware provided
Maintains proper CV and drive shaft angles
Rear leaf spring blocks
CAD designed components ensure a precise fit

6-IN. SUSPENSION SYSTEM PART No. RS66506B

2019-17 F150 4WD - Exc. AWD

PART No. RS66501B

2016-15 F150 4WD - Exc. AWD

Shocks/Struts/Strut Tower sold separately:

Strut Tower	RS5000™MX	RS7000®MT	RS9000™XL
Front RS886520	Front RS55839	Front -	Front -
Rear -	Rear RS55287	Rear RS7287	Rear RS999287

RS886520 is a strut spacer.



Fits 35-in. tires
Will not affect the AdvanceTrac® with RSC® system
One-piece reinforced subframe, made from high-strength, low-alloy steel & DOM tubing
Maintains factory location of rack and pinion and uses O.E. tie rod ends
CNC machined extended steering knuckles
Aligns to O.E. specifications - all hardware provided
Maintains proper CV and drive shaft angles
Rear leaf spring blocks
CAD designed components ensure a precise fit

6-IN. SUSPENSION SYSTEM

The engineers at Rancho® have redesigned the 6-inch Suspension System for the 2014-2010 Ford F-150. The performance kit now includes front Strut Towers (no need to buy separately), Rancho's fully boxed welded subframe for superior strength and ductile iron steering knuckles. Our differential drop brackets properly align pinion and CV angles to ensure a smooth ride without binding or vibration. For the front, a pair of bolt-on, 6-inch strut spacers install easily without the need to disassemble factory struts. The performance suspension kit also includes a pair of CV spacers, brake line brackets, sway bar relocation brackets and all necessary hardware. For the rear, we provide a tapered block, U-bolts and other necessary hardware. Choose Rancho rear shocks from any of these popular series - RS5000™MX, RS7000®MT or RS9000™XL - for the best ride. The Rancho brand offers a Limited Lifetime Warranty** for this Suspension System.

PART No. RS66519B - Exc. AWD, Harley-Davidson and SVT

Shocks sold separately. Kit comes with strut towers to re-use factory struts:

2014 F150 4WD

RS5000™MX	RS7000®MT	RS9000™XL
Front RS55838*	Front RS7838*	Front RS999838*
Rear RS55287	Rear RS7287	Rear RS999287

2013-10 F150 4WD

RS5000™MX	RS7000®MT	RS9000™XL
Front RS55833	Front RS7833	Front -
Rear RS55287	Rear RS7287	Rear RS999287



4-IN. SUSPENSION SYSTEM PART No. RS6519B

2013-10 F150 4WD - Exc. AWD, Harley-Davidson & SVT

Fits 35-in. tires
Will not affect the AdvanceTrac® with RSC® system
One-piece reinforced subframe, made from high-strength, low-alloy steel & DOM tubing
Allows for reuse of the stock 18-in. or 20-in. wheel
CNC machined extended steering knuckles

Shocks sold separately:

RS5000™MX	RS7000®MT	RS9000™XL
Front RS55806	Front RS7806	Front RS999806
Rear RS55287	Rear RS7287	Rear RS999287

UPGRADE YOUR SHOCKS.

YEAR	MODEL	RAISED HEIGHT	RS5000™MX		RS7000®MT		RS9000™XL	
			Front	Rear	Front	Rear	Front	Rear
19-15	F150 4WD	0-in.	RS55836	RS55316	-	RS7316	RS999836	RS999316
19-14	F150 4WD	2-in.	-	RS55316	RS7837	RS7316	-	RS999316
14-09	F150 4WD	0-in.	RS55836	RS55384	-	RS7384	RS999836	RS999384
2014	F150 4WD w/ Rancho RS66519B	6-in.	RS55838*	RS55287	RS7838*	RS7287	RS999838*	RS999287
13-10	F150 4WD w/ Rancho RS6519B	4-in.	RS55806	RS55287	RS7806	RS7287	RS999806	RS999287
13-10	F150 4WD w/ Rancho RS6519B	6-in.	RS55833	RS55287	RS7833	RS7287	-	-
13-09	F150 4WD - Exc. SVT Raptor	0-in.	RS55804	RS55384	RS7804	RS7384	RS999804	RS999384
13-09	F150 4WD - Exc. AWD and 8200 GVW	2-in.	-	-	RS7805	RS7384	-	-
08-04	F150 4WD	0-in.	-	RS55286	RS7767	RS7286	-	RS999286
08-04	F150 4WD	2-in.	-	RS55286	RS7792	RS7286	-	RS999286
08-04	F150 w/ Rancho RS6588 or RS6589 - Exc. AWD & 8200 GVW	4-in.	-	RS55287	-	RS7287	RS999769	RS999287

* Optional. RS886519 is a strut tower. RS7833 and RS55833 is a front strut specifically designed to provide lift to the vehicle. The RS7833 or RS55833 strut coupled with the RS6519B kit provides a 6-in. lift.



Rancho RS66506B with 35-in. tires. Trimming or modification may be required to provide proper tire clearance. Actual tire size varies between manufacturers. B designates black finish.

5-IN. RADIUS ARM SUSPENSION SYSTEM

The 5-inch Radius Arm Suspension System features Rancho®'s full radius arms with OE-matching rubber upper mounts and lower brackets at the axle to allow for caster adjustment. The system also comes with **NEW** front coil springs providing five inches of lift, **NEW** track bar relocation bracket and a drop pitman arm to maintain steering geometry. Rear lift is accomplished with lift blocks and extended length U-bolts. The Rancho brand offers a Limited Lifetime Warranty** for this Suspension System.

5-in. Suspension System that fits up to 37-in. tires (with minor trimming)
Includes Rancho Radius Arms
Covered by Rancho's Limited Lifetime Warranty**

LIFT YOUR RIDE.

**NOW INCLUDES
COIL SPRINGS
& REAR BLOCKS**



PART No. RS66552B

Rear Kits (REQUIRED for F350) and Shocks sold separately:

2019-17 F250/F350 SINGLE REAR WHEEL DIESEL 4WD
RS5000™MX RS9000™MX
Front RS55044 Front RS999044
Rear RS55036A Rear RS999036A

2016-11 F250/F350 SINGLE REAR WHEEL DIESEL 4WD
RS5000™MX RS7000®MT RS9000™MX
Front RS55044 Front RS7044 Front RS999044
Rear RS55261 Rear RS7261 Rear RS999261

F350 coverage with aux. rear spring will require the purchase of an additional rear block to level frame. RS886503 w/out aux. spring, RS886502 w/ aux. spring.



UPGRADE YOUR SHOCKS.

YEAR	MODEL	RAISED HEIGHT	RS5000™MX		RS7000®MT		RS9000™MXL	
			Front	Rear	Front	Rear	Front	Rear
19-17	F250/F350 4WD w/ Single Rear Wheels - Exc. Chassis Cab	0-in.	RS55042	RS55047A	RS7042	-	RS999042	RS999047A
16-11	F250/F350 SuperDuty 4WD w/ Rancho RS6525B	2.5-in.	RS55043	RS55254	RS7043	RS7254	RS999043	RS999254
16-11	F250/F350 SuperDuty 4WD w/ Rancho RS6524B	4-in.	RS55044	RS55261	RS7044	RS7621	RS999044	RS999261
16-11	F250/F350 SuperDuty 4WD w/ Rancho RS66551B	4-in.	RS55044	RS55261	RS7044	RS7621	RS999044	RS999261
16-05	F250/F350 4WD w/ Dual Rear Wheels - Exc. Chassis Cab	0-in.	RS55042	RS55254	RS7042	RS7254	RS99042	RS999254
16-05	F350 4WD w/ Single Rear Wheels - Exc. Chassis Cab	0-in.	RS55042	RS55047	RS7042	RS7254	RS999042	RS999047
16-05	F250/F350 - Exc. Chassis Cab	5 - 6-in.	RS55048	RS55045	RS7048	RS7261	RS999048	RS999045
10-05	F250/F350 w/ Rancho RS6510 or RS6515 - Exc. Chassis Cab	2.5-in.	RS55043	RS55254	RS7043	RS7254	RS999043	RS999254
10-05	F250/F350 w/ Rancho RS6511/B, RS6514/B - Exc. Chassis Cab	4-in.	RS55044	RS55261	RS7044	RS7261	RS999044	RS999261



2.5-IN. SUSPENSION SYSTEM

The 2.5-inch Leveling Suspension System features Rancho®'s Coil springs to level the front of the truck with the rear and cam bolts to allow for caster adjustment. Brake line drop brackets and front bump stops also included. The Rancho brand offers a Limited Lifetime Warranty** for this Suspension System.

2.5-in. Suspension System that fits 35-in. tires (with minor trimming)
Includes alignment cam for caster adjustment
Covered by Rancho's Limited Lifetime Warranty**

PART No. RS66555R9

2019-11 F250/F350 SUPERDUTY Diesel, Single Rear Wheel

RS9000™MXL Front Shocks included. Rear sold separately:

RS9000™MXL
Front Included
Rear RS999047A (2019-17) RS999254 (2016-11)



2.5-IN. RADIUS ARM LEVELING SYSTEM

The 2.5-inch Radius Arm Leveling Suspension System features Rancho's full radius arms with OE-matching rubber upper mounts and lower brackets at the axle to allow for caster adjustment. The system also comes with new front coil springs leveling the front of the truck with the rear. The Rancho brand offers a Limited Lifetime Warranty** for this Suspension System.

PART No. RS66553B

Includes Competition Style Radius Arms, Bump Stops & COIL SPRINGS

2019-17, 2016-11 F250 SUPERDUTY 4WD Diesel

Shocks sold separately:

2019-17 F250/F350 SINGLE REAR WHEEL DIESEL 4WD
RS5000™MX RS7000®MT RS9000™MXL
Front RS55043 Front RS7043 Front RS999043
Rear RS55047A Rear - Rear RS999047A

2016-11 F250/F350 SINGLE REAR WHEEL DIESEL 4WD
RS5000™MX RS7000®MT RS9000™MXL
Front RS55043 Front RS7043 Front RS999043
Rear RS55254 Rear RS7254 Rear RS999254



Trimming or modification may be required to provide proper tire clearance. Actual tire size varies between manufacturers. B designates black finish.

2.5-IN. SUSPENSION SYSTEM PART No. RS66901R9

2019-05 TACOMA 4WD

Front quickLIFT™ Loaded included: **RS999915**
Rear RS9000™XL Shocks included: **RS999319**

- Fits up to 285/70/17-in. tires
- 100-percent bolt-on system
- Rancho® designed upper control arms
- Includes 2 upper ball joints⁵
- Brackets are constructed from high-strength low-alloy steel
- Zerk joints added to pivots
- Rancho QuickLIFT™ Loaded & RS9000XL™ Shocks included
- Rear blocks and U-Bolts included
- Will not affect the Electronic Stability Control System
- Maintains O.E. alignment specs



LIFT YOUR RIDE.



2.25-IN. SUSPENSION SYSTEM

The Rancho® Level It Suspension Kits not only raise the front suspension up to 2½-inches (depending on application) but it takes the rake out of the front of your truck. Plus, you get the award-winning Rancho quickLift™ RS7000®MT Monotube Struts – featuring vehicle-specific valving and high pressure gas inside – that you'll notice an improved ride and a polished aggressive look from the units brushed and plated appearance. The kits also include a set of sway bar spacers to ensure optimal engineering angles for roll and sway (translation: you're going to love the precise ride). Finish the kit with an optional set of rear RS7000MT Shocks, Performance Control Arms and/or Rear Block Kits (where applicable). The Rancho Level It Suspension Kit requires the transfer of stock factory spring and top mount during installation. This product offers a Limited Lifetime Warranty**.

- Levels the front of your vehicle
- Monotube high-pressure Struts look great
- Sway bar spacers included
- Requires transfer of factory spring and top mount
- Limited Lifetime Warranty**

Optional upgrades include; Rancho rear Monotube Shocks, performance Control Arms and Rear Block Kits. See page T.18 and T19



PART No. RS66902R7

2019-07 TUNDRA 4WD Exc. TRD PRO

OPTIONAL UPGRADE COMPONENTS

UPPER CONTROL ARM REAR BLOCK KIT RS7000®MT
RS64902 RS70902 Front Inc.
Rear RS7324



OE SPRING AND MOUNT NOT INCLUDED

PART No. RS66903R7

2019-05 TACOMA 2/4WD 6-LUG Exc. TRD PRO & 5-Lug

OPTIONAL UPGRADE COMPONENTS

UPPER CONTROL ARM REAR BLOCK KIT RS7000®MT
RS64901 RS70901 Front Inc.
Rear RS7319

PART No. RS66903R7

2019-03 4RUNNER 4WD Exc. TRD PRO & 5-Lug
2014-07 FJ CRUISER 4WD

OPTIONAL UPGRADE COMPONENTS

UPPER CONTROL ARM REAR BLOCK KIT RS7000®MT
RS64903 RS70080 Front Inc.
Rear RS7305

UPGRADE YOUR SHOCKS.

YEAR	MODEL	RAISED HEIGHT	RS5000™X			RS7000®MT		RS9000™XL			
			Front	Rear Left	Rear Right	Front	Rear	Front Left	Front Right	Rear Left	Rear Right
19-07	Tundra 4WD	0-in.	-	RS55324	RS55324	-	RS7324	RS999758	RS999758	RS999324	RS999324
19-07	Tundra 4WD - Exc. TRD and Crewmax	2.25-in.	-	RS55324	RS55324	RS7759	RS7324	-	-	RS999324	RS999324
06-00	Tundra 4WD	0-in.	RS55766	RS55040	RS55040	-	RS7040	RS999766	RS999766	RS999040	RS999040
06-00	Tundra 4WD	2.5-in.	-	RS55040	RS55040	-	-	RS999923	RS999931	RS999040	RS999040
19-05	Tacoma 2WD Pre-Runner/4WD	0-in.	RS55777	RS55319	RS55319	RS7777	RS7319	RS999777	RS999777	RS999319	RS999319
19-05	Tacoma 2WD Pre-Runner/4WD - Exc. Extended Cab	2.75-in.	-	RS55319	RS55319	RS7760	RS7319	RS999915	RS999915	RS999319	RS999319
04-95	Tacoma 2WD Pre-Runner/4WD - Exc. Standard and Crew Cab	0-in.	RS55762	RS55226	RS55180	-	-	RS999762 ¹⁹²	RS999762 ¹⁹²	RS999226	RS999180
04-95	Tacoma 2WD Pre-Runner/4WD - Exc. Standard and Crew Cab	0-in.	-	RS55226	RS55180	-	-	RS999763 ¹⁹²	RS999763 ¹⁹²	RS999226	RS999180
04-95	Tacoma 2WD Pre-Runner/4WD	1.75-in.	-	RS55226	RS55180	-	-	RS999907	RS999908	RS999226	RS999180
14-07	FJ Cruiser 4WD	0-in.	RS55777	-	-	RS7777	RS7305	RS999777	RS999777	RS999305	RS999305

¹⁹² This is a spring-seat shock absorber.



⁵ Replacement part number: Moog K80611. Trimming or modification may be required to provide proper tire clearance. Actual tire size varies between manufacturers. B designates black finish.

CONTROL ARM UPGRADE KIT

Looking for added performance & increased durability on your leveled or lifted truck? Rancho® Performance Control Arms – a direct-fit, bolt-on tubular steel design – deliver the performance and durability you are looking for. Rancho Control Arms are engineered to maintain the ball joint in its normal operating range. In addition, provide additional wheel travel and caster to aid in alignment compared to factory control arms on lifted applications. Each Rancho arm features a pre-installed, replaceable ball joint and urethane control arm pivot bushings. Maintaining the control arms is easy, thanks to zerks fittings for easy maintenance (and whisper quiet operation).

- Corrected ball joint angle for leveled and lifted applications
- Durable black powdercoat finish with Rancho logo
- Maintainable, grease-friendly zerks fittings
- Increased wheel travel over stock
- Urethane bushings for inner pivots
- Direct bolt-up

PART No. RS64901
2019-05 TACOMA 2/4WD 6-LUG
 with 2 - 6-in. Lift Height Exc. TRD PRO & 5-Lug

PART No. RS64902
2019-07 TUNDRA 4WD
 with 2 - 6-in. Lift Height Exc. TRD PRO

PART No. RS64903
2019-03 4RUNNER 4WD **2014-07 FJ CRUISER 4WD**
 with 2 - 6-in. Lift Height Exc. TRD PRO with 2 - 6-in. Lift Height



REAR BLOCK KIT

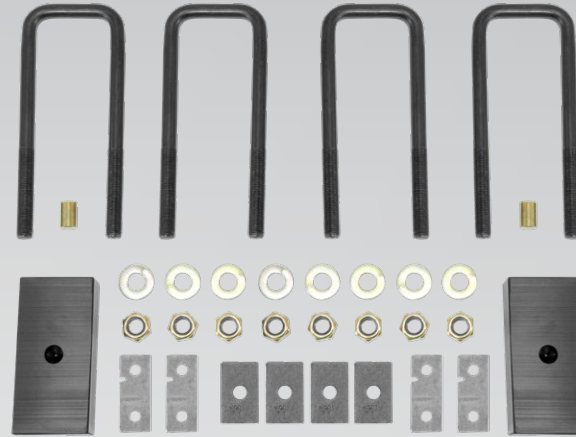
Not into the pre-runner look or just adding rake back? The Rancho® rear blocks will raise the rear an additional 1 ½-inches to level out the entire truck. Each kit includes (2) rear blocks, (4) coated u-bolts, and (8) nuts for easy installation. If you're looking for a complete performance upgrade package, match this rear block kit with a Rancho Level It System and Performance Upper Control Arms. This product offers a Limited Lifetime Warranty**.

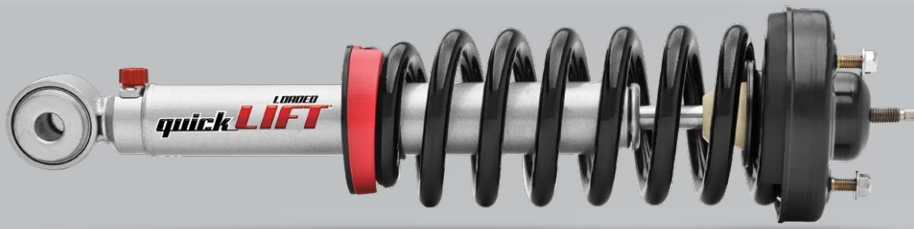
Lifts rear up 1 ½-inches
 U-Bolts and hardware included
 Limited Lifetime Warranty

PART No. RS70080
2019-03 4RUNNER 4WD **2014-07 FJ CRUISER 4WD**
 Exc. TRD PRO & 5-Lug

PART No. RS70901
2019-05 TACOMA 2/4WD 6-LUG Exc. TRD PRO & 5-Lug

PART No. RS70902
2019-07 TUNDRA 4WD Exc. TRD PRO





quickLIFT™ LOADED

SUSPENSION TECHNOLOGY

Award-winning Rancho® quickLIFT™ Loaded assemblies level and lift late-model trucks and SUVs, providing an aggressive stance and allowing for the use of larger wheel and tire packages without the cost of a complete suspension system or the long installation time. Each Rancho quickLIFT Loaded unit is a gas charged complete modular assembly that includes an application-specific, installed coil spring and upper mounting plate to simplify installation. Engineered with the globally renowned and exclusive RS9000™XL nine-position adjustability, Rancho quickLIFT Loaded units improve performance and provide the ability to manually tune the vehicle's ride to suit terrain and driver preference. Covered by a Limited Lifetime Warranty and 90-Day Free-Ride Offer**.



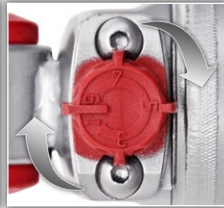
Easy to install. Pre-assembled with coil spring and upper mount.



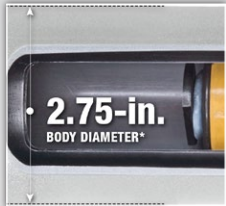
Levels front suspension and removes the factory rake.



Clears up to 35-in. tires*. Creates a custom look and increases ground clearance.



9-position Tuning Technology. Easily adjust ride quality and performance.



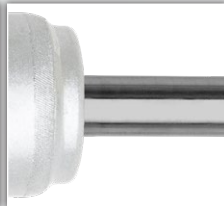
2.75-in. (70mm) body diameter* allows more fluid carrying capacity for a cooler running shock.



Graphite filled Fluon banded piston for increased durability.



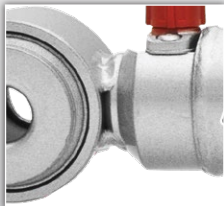
A high strength polyurethane bumper that helps control the rebound motion of the Shock in harsh driving conditions.



Heavy-Duty 18mm diameter Nitro-Carburized rod.

Tri-Tube, Mono-Flow design ensures exceptional performance.

Sintered Iron piston for long service life.



Double welded loops for enhanced performance and durability.



Premium long lasting Liquid Metallic finish.



Low-Friction self-lubricating seal retains gas and oil.

LEVEL YOUR RIDE.

CHEVY / GMC						
YEAR	HEIGHT		MODEL	quickLIFT™ LOADED		RS9000™XL
	Front	Rear		Front	Rear	
18-14	2.00	-	Silverado/Sierra 1500 4WD - Exc. High Country and Denali	RS999949	-	RS999198
14-07	2.00	-	Silverado/Sierra 1500 2/4WD - Exc. Z71	RS999901	-	RS999198
14-07	2.00	-	Ava., Sub., Tahoe, Yukon 2/4WD - Exc. Autoride & Z71	RS999901	RS70075 ¹	RS999262
14-07	2.00	-	Ava., Sub., Tahoe, Yukon 2/4WD - Inc. Autoride, Exc. Z71	RS999928 ²	-	Reuse O.E.

DODGE / RAM						
YEAR	HEIGHT		MODEL	quickLIFT™ LOADED		RS9000™XL
	Front	Rear		Front Left	Front Right	
18-09	2.25	-	Ram 1500 4WD - Exc. Mega Cab, TRX & Diesel	RS999944	RS999930	RS999367
08-06	1.50	-	Ram 1500 4WD - Exc. Mega Cab & TRX	RS999943	RS999929	RS999274
08-06	1.00	-	Ram 1500 TRX 4WD - Exc. Mega Cab	RS999943	RS999929	RS999274

FORD / MERCURY / LINCOLN							
YEAR	HEIGHT		MODEL	quickLIFT™ LOADED		RS5000™X or RS9000™XL	
	Front	Rear		Front Left	Front Right		Rear
19-15	2.75	-	F150 4WD	RS999946	RS999945	RS999316	
19-14	2.25	-	F150 2WD	RS999948	RS999947	RS55149	
2014	2.00	-	F150 - Exc. AWD, Harley-Davidson, SVT Raptor, 6.2L Engine, w/o 6200 GVW	RS999946	RS999945	RS999384	
13-09	2.00	-	F150 4WD - Exc. SVT Raptor	RS999935	RS999911	RS999286	
13-09	1.75	-	F150 2WD	RS999936	RS999912	RS999286	
08-04	2.50	-	F150 4WD - Inc. 8200 GVW	RS999910	RS999910	RS999286	
08-04	1.75	1.00	F150 2WD	RS999909	RS999909	RS999285	
YEAR	HEIGHT		MODEL	quickLIFT™ LOADED		RS9000™XL	
	Front	Rear		Front Left	Rear		
08-06	1.50	-	Mark LT 4WD	RS999910	-	RS999286	
08-06	1.50	-	Mark LT 2WD	RS999909	-	RS999285	
YEAR	HEIGHT		MODEL	quickLIFT™ LOADED		quickLIFT™ LOADED	
	Front	Rear		Front Left	Front Right	Rear Left	Rear Right
13-07	1.25	.75	Expedition 4WD - Exc. Air suspension	RS999940	RS999925	RS999941	RS999926
06-03	1.00	.75	Expedition 4WD - Exc. Air suspension	RS999932	RS999902	RS999933	RS999903

NISSAN							
YEAR	HEIGHT		MODEL	quickLIFT™ LOADED		quickLIFT™ LOADED	RS9000™XL
	Front	Rear		Front Left	Front Right		
15-04	1.75	1.75	Armada 2/4WD - Exc. Rear auto leveling	RS999937	RS999921	RS70076 ¹	RS999113
18-05	2.00	-	Frontier 2/4WD - Exc. Pro 4X	RS999922	RS999922	-	RS999311
12-05	2.00	1.75	Pathfinder 2/4WD	RS999922	RS999922	-	RS999312
15-04	1.75	-	Titan 2/4WD - Exc. Pro 4X & Off-Road Package	RS999937	RS999921	RS70077 ¹	RS999303
15-05	1.75	1.50	Xterra 4WD - Exc. Pro 4X & Off-Road Package	RS999922	RS999922	RS70078 ¹	RS999314
15-05	1.75	1.50	Xterra 2WD - Exc. Off-Road Package	RS999922	RS999922	RS70078 ¹	RS999314

TOYOTA							
YEAR	HEIGHT		MODEL	quickLIFT™ LOADED		quickLIFT™ LOADED	RS9000™XL
	Front	Rear		Front Left	Front Right		
19-03	2.00	1.50	4 Runner 2/4WD	RS999913	RS999914	RS70080 ¹	RS999305
13-06	2.00	1.50	FJ Cruiser	RS999913	RS999914	RS70080 ¹	RS999305
07-01	2.25	-	Sequoia 2/4WD	RS999923	RS999931	RS70081 ¹	-
YEAR	HEIGHT		MODEL	quickLIFT™ LOADED		RS9000™XL	
	Front	Rear		Front Left	Front Right	Rear Left	Rear Right
19-05	2.75	-	Tacoma 4WD	RS999915	RS999915	RS999319	RS999319
19-05	1.75	-	Tacoma Pre Runner 2WD	RS999915	RS999915	RS999319	RS999319
04-99	1.75	-	Tacoma Pre Runner 2WD	RS999907	RS999908	RS999226	RS999180
04-95	1.75	-	Tacoma 4WD	RS999907	RS999908	RS999226	RS999180
19-07	2.25	-	Tundra 4WD - Exc. TRD and Crewmax	RS999919	RS999920	RS999324	RS999324
06-00	2.50	-	Tundra 4WD	RS999923	RS999931	RS999040	RS999040

*Select applications. Trimming or modification may be required to provide proper tire clearance. Actual tire size varies between manufacturers.



O.E. SPRING AND MOUNT NOT INCLUDED

quickLIFT™ RS7000® MT **MONOTUBE DESIGN SUSPENSION TECHNOLOGY**

Specifically engineered for high center of gravity light trucks and SUV's to provide the handling, control and performance expected from Rancho® RS7000® MT Struts. These Struts provide enhanced stability over stock twin tubes by reducing body roll in evasive maneuvers and tight turns. These Struts feature a high-pressure gas charge that separates the unit's internal oil and Nitrogen to provide additional spring rate. This helps to maximize damping response that dissipates heat for better control. To further enhance ride control characteristics, Rancho RS7000MT Monotube Struts include a hydraulic lockout to cushion the impact as the vehicle suspension is fully extended. The series is covered by a Limited Lifetime Warranty and 90-Day Free-Ride Offer**.



LEVEL YOUR RIDE.

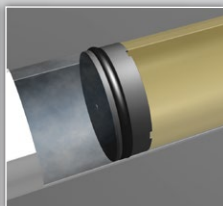


Levels front suspension and removes the factory rake.

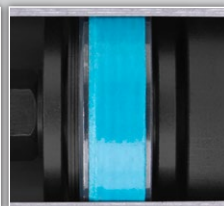


• **1.97-in.**
BODY DIAMETER

1.97-Inch (50mm) Monotube body provides improved heat dissipation over other twin-tube shocks.



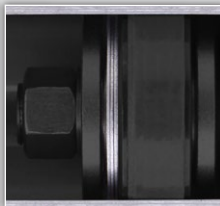
Monotube design with high pressure Nitrogen gas charge allows for quicker damping response time.



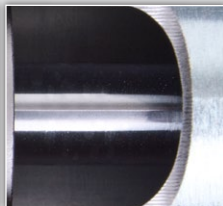
Huge 46mm working piston with Fluon band for consistent sealing between the piston and monotube.



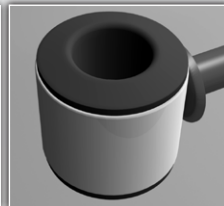
Brushed Zinc plated finish with durable clear coat provides long lasting great looks.



Application specific deflective disc valving instantly senses and automatically responds to any suspension input to deliver precise control, superb ride, and predictable handling characteristics.



14mm Hardened Steel piston rod for superior strength over standard 11mm rods.



Black natural Rubber bushings for enhanced durability and reduced road harshness.

YEAR	HEIGHT		MODEL	quickLIFT™ RS7000®MT	RS7000®MT
	Front	Rear			
18-14	2.00	0	Silv/Sierra 1500 4WD - Must use O.E. Springs - Exc. Electric Sus., 4Wheel Steering and ZW7 Self Leveling	RS7831	RS7198
13-07	2.00	0	Suburban 1500, Tahoe, Yukon, Yukon XL 1500 - Must use O.E. Springs	RS7785	-
13-07	2.00	0	Avalanche - Must use O.E. Springs	RS7785	-
13-07	2.00	0	Silv/Sierra 1500 4WD - Must use O.E. Springs - Exc. Electric Sus., 4Wheel Steering and ZW7 Self Leveling	RS7785	RS7198
19-14	2.00	0	F150 2WD All Trims with Rancho quickLIFT™ RS7000®MT - Exc. Standard Cab	RS7837	RS7316
13-09	2.00	0	Ford F150 - Must use O.E. Springs - Exc. AWD and 8200 GVW	RS7805	RS7384
08-04	2.00	0	Ford F150 - Must use O.E. Springs	RS7792	RS7286
2004	2.00	0	Ford F150 Heritage - Must use O.E. Springs	RS7792	-
19-07	2.00	0	Toyota Tacoma - Must use O.E. Springs	RS7760	RS7319
19-03	2.00	0	Toyota 4Runner - Must use O.E. Springs - Exc. Delphi REAR Suspension System	RS7760	RS7305
19-07	2.00	0	Toyota Tundra - Must use O.E. Springs - Exc. Crew Max or TRD Package	RS7759	RS7324
14-07	2.00	0	Toyota FJ Cruiser - Must use O.E. Springs	RS7760	RS7305

*Trimming or modification may be required to provide proper tire clearance.
Actual tire size varies between manufacturers.

T.22

quickLIFT™ RS7000® MT LEVELING SYSTEM

Fits up to 35-in. tires*
quickLIFT™ RS7000®MT Monotube front struts included
Sway bar spacers included
Reuse factory coil spring and top mount
Rear Shocks sold separately

PART No. RS66305R7 1.75-in. Leveling System
2019-15 Colorado/Canyon

Rear RS7000®MT Shocks sold separately: **RS7023**

PART No. RS66304R7 2-in. Leveling System
2018-14 Silverado/Sierra 1500

Rear RS7000®MT Shocks sold separately: **RS7198**

PART No. RS66303R7 2-in. Leveling System
2013-07 Silverado/Sierra 1500

Rear RS7000®MT Shocks sold separately: **RS7198**

PART No. RS66450R7 2-in. Leveling System
2013-03 Ram 2500/3500 Diesel

Rear RS7000®MT Shocks sold separately: **RS7269**

PART No. RS66504R7 2-in. Leveling System
2019-14 Ford F150

Rear RS7000®MT Shocks sold separately: **RS7316**

PART No. RS66503R7 2-in. Leveling System
2013-09 Ford F150

Rear RS7000®MT Shocks sold separately: **RS7384**

PART No. RS66502R7 2-in. Leveling System
2008-04 F150 - Exc. AWD; w/o 8,200 GVW

Rear RS7000®MT Shocks sold separately: **RS7286**

PART No. RS66902R7 2.25-in. Leveling System
2019-07 Tundra - Exc. TRD PRO

Rear RS7000®MT Shocks sold separately: **RS7324**

PART No. RS66903R7 2.25-in. Leveling System
2019-05 Tacoma 2/4WD 6-Lug - Exc. TRD PRO & 5-LUG

Rear RS7000®MT Shocks sold separately: **RS7319**

PART No. RS66903R7 2.25-in. Leveling System
2019-03 4Runner - Exc. TRD PRO & 5-LUG
2013-07 FJ Cruiser 4WD

Rear RS7000®MT Shocks sold separately: **RS7305**



COIL SPRINGS ARE NOT INCLUDED



T.23

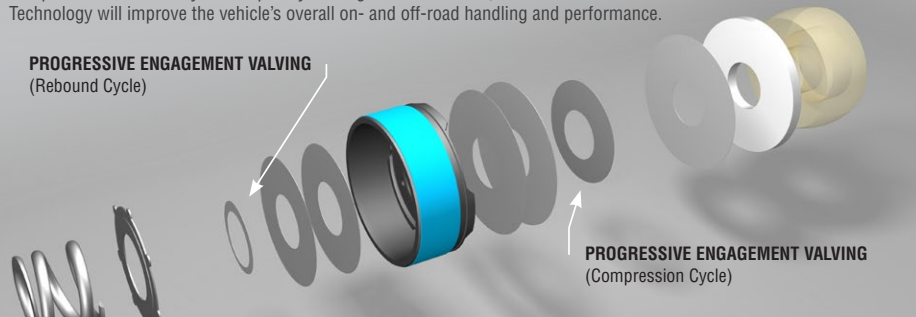


RS5000™X SHOCK ABSORBER

CROSS-TUNED TECHNOLOGY

Inside the new, innovative Rancho® RS5000™X shock is a unique, patented valving system and advanced compression functionality. Developed by the engineers at Rancho, The Rancho RS5000X Cross-Tuned Technology will improve the vehicle's overall on- and off-road handling and performance.

PROGRESSIVE ENGAGEMENT VALVING
(Rebound Cycle)



PROGRESSIVE ENGAGEMENT VALVING
(Compression Cycle)

PROGRESSIVE ENGAGEMENT VALVING:

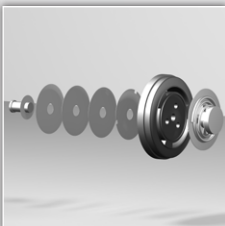
The Rancho RS5000™X Series design includes patented progressive rebound and compression discs. At lower speeds or in the earlier stages of the Shock's travel, an eccentric disc in the valve shim stacks will engage the valving at lower frequencies, helping to control the energy of motion as the cycle of the Shock increases or decreases in its action.

When hitting a pothole, off-road trail obstacle or similar activity, Rancho's Progressive Engagement Valving allows for early flow of fluid, helping to reduce harsh initial impacts and to control the flow of fluid in a progressive, gradual manner through the valving.

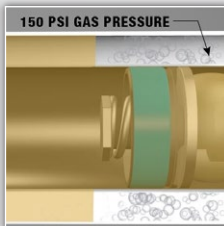
During on- or off-road driving activities like washboard roads or when traveling a rough fire road, the early flow of fluid helps to minimize a "rough" ride as the piston movement is able to glide through the initial travel motion of the Shock with minimal ground impact or force. If needed, the Progressive Engagement Valving will further engage to maintain control and stability.



The RS5000™X series features a 2-1/4-inch diameter shock body. A larger shock body allows for increased fluid capacity to operate cooler and to increase vehicle control and performance at varying speeds and terrains. The RS5000™X series combines a larger shock body with all-weather fluid, allowing the shock to withstand internal temperatures between -40 and 248 degrees Fahrenheit.

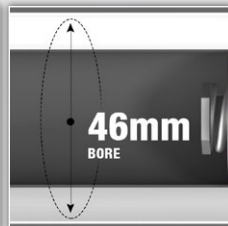


The Tuned Compression Control Valve is a custom-tuned, clamped disc base valve that regulates fluid transfer during the shock's compression cycle to help absorb impacts without disc flutter and to help maintain vehicle control in virtually any environment. The precision-tuned shim stacked valving allows the motion of the shock to work in harmony with the vehicle during on- and off-road driving.



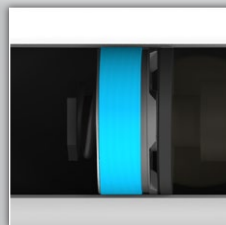
Each RS5000™X shock is gas pressurized to 150 PSI.* The twin tube, gas pressurized shock has a variety of advantages including minimizing air-to-oil mixture that can cause foaming and shock fade. Gas pressurization also provides a mild boost of spring rate to the vehicle.

Rancho RS5000X series struts include 60PSI of gas pressurization.



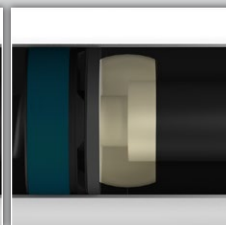
The RS5000X's 35 mm bore helps to provide heightened control of shock motion due largely to the expanded piston area. Full-displaced compression valving allows the piston to displace more fluid than traditional rod displaced valving.

UPGRADE YOUR SHOCKS.

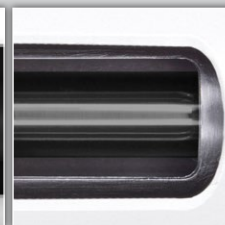


The sintering process forms objects from powders using atomic diffusion. The powdered material is heated to just below its melting point, fusing all of the particles together to create the piston. This process brings increased structural conformity to each Rancho RS5000™X piston.

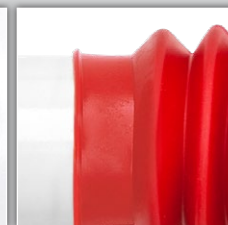
The RS5000™X composite piston band provides smoother piston travel and greater responsiveness to changing road conditions. Each glass-filled band offers incredibly smooth operation within the shock absorber cylinder due to Fluon, a slippery glass and plastic material.



Each RS5000™X series shock has a high-strength, polyurethane bumper that helps control the rebound motion during harsh driving conditions. The rebound bumper greatly reduces wear and tear during on- and off-road driving. When your shock rebounds from an obstacle at an excessive rate, the polyurethane bumper dampens the piston rod cycle at its peak point of travel.



Every Rancho RS5000™X shock piston rod is strengthened through a nitro-carburizing process. From increased scuffing resistance to additional protection against corrosion, the process enhances the shock's overall durability. Nitro-carburizing also is more environmentally friendly than the chroming process.

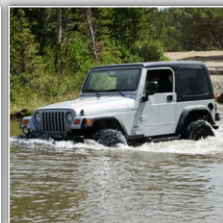


Each Rancho RS5000™X series shock includes a red polyvinyl accordion protection boot, adding protection to the shock rod and oil seal during on- and off-road driving.

GREAT ALL AROUND UPGRADE OR REPLACEMENT SHOCK



The bushings used on the Rancho RS5000™X series shocks provide additional ride harshness absorption and reduce transmitted road noise and suspension vibration to result in a smoother ride and longer life for shocks and related suspension components.



The low-friction, self-lubricating seal included in the RS5000™X shock retains gas and oil to help prolong performance and allow for quicker rebound and smoother compression during the shock cycle. This seals provides an extra layer of defense against dirt and debris.



Rancho engineers place extra emphasis on welded construction at stress areas – like mounting points – of the RS5000™X shock. Each shock includes double-welded loops for added strength and durability.



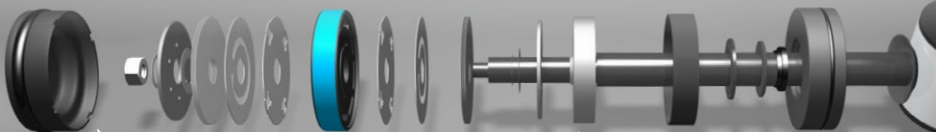
ALSO AVAILABLE AS A PERFORMANCE STRUT





RS7000® MT SHOCK ABSORBER

MONOTUBE DESIGN

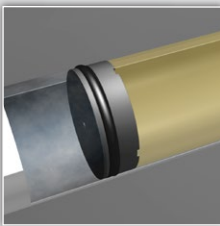
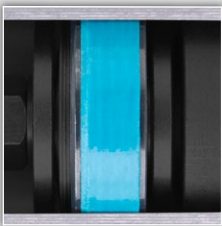


FREE-FLOATING DIVIDING PISTON
Reduces the possibility of aeration and shock fade

HYDRAULIC LOCKOUT
Cushions impact at suspension travel limits

Specifically engineered for high center of gravity light trucks and SUV's to provide the handling, control and performance expected from Rancho® RS7000® MT Shock Absorbers. The Rancho RS7000 MT Monotube Shock Absorbers provide enhanced stability over stock twin tubes by reducing body roll in evasive maneuvers and tight turns. These Shocks feature a high-pressure gas charge that separates the unit's internal oil and Nitrogen to provide additional spring rate. This helps to maximize damping response that dissipates heat for better control.

To further enhance ride control characteristics, Rancho RS7000 MT Monotube Shocks include a hydraulic lockout to cushion the impact as the vehicle suspension is fully extended. The series is covered by a Limited Lifetime Warranty and 90-Day Free-Ride Offer**.



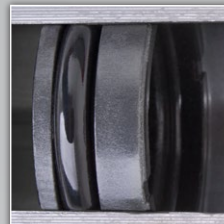
Application specific deflective disc valving instantly senses and automatically responds to any suspension input to deliver precise control, superb ride, and predictable handling characteristics.

Huge 46mm working piston with Fluon band for consistent sealing between the piston and monotube which delivers better control and increased durability compared to conventional piston designs.

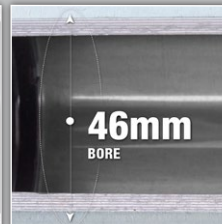
1.97-Inch (50mm) Monotube body provides improved heat dissipation over other twin-tube shocks.

Monotube design with high pressure Nitrogen gas charge allows for quicker damping response time.

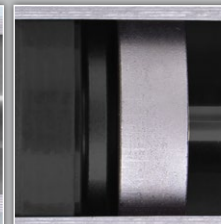
UPGRADE YOUR SHOCKS.



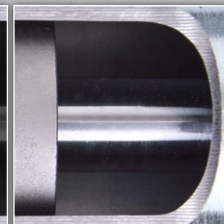
Full-floating dividing piston and high pressure Nitrogen gas maintains constant pressure against the hydraulic oil, eliminating possible aeration and shock fade.



46mm Bore Monotube construction - Ideal for larger light trucks, SUVs and more.



Integral hydraulic lockout cushions piston impact when vehicle suspension is fully extended.



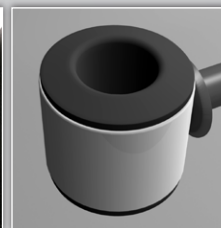
14mm Hardened Steel piston rod for superior strength over standard 11mm rods.



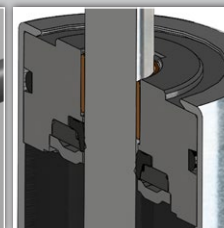
Brushed Zinc plated finish with durable clear coat provides long lasting great looks.



Protective black rubber boot shields piston rod from dirt and debris.



Black natural rubber bushings for enhanced durability and reduced road harshness.



Internally bushed steel rod guide with temperature resistant two piece seal design improves sealing over conventional single seals during extreme side-loads.



ALSO AVAILABLE AS A PERFORMANCE STRUT

HIGH CONTROL SHOCK - REDUCES ROLL AND SWAY





RS9000™XL SHOCK ABSORBER

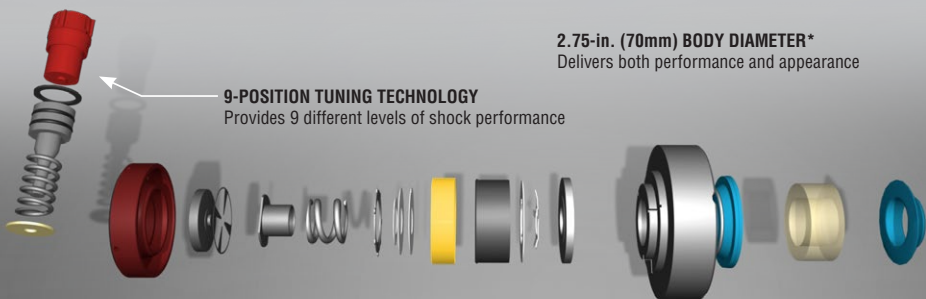
NINE LEVELS OF PERFORMANCE

2.75-in. (70mm) BODY DIAMETER*

Delivers both performance and appearance

9-POSITION TUNING TECHNOLOGY

Provides 9 different levels of shock performance



Rancho® RS9000™XL 9-position Adjustable Shocks deliver an exclusive nine levels of performance to stock or lifted off-road trucks, SUVs and Jeeps. Globally recognized as the first 9-position manually adjustable Shocks series in the off-road market, this advanced line of Shocks is ideal for off-road use, towing, hauling and more. RS9000XL 9-position Shocks allow the driver to control how soft or firm the ride quality is through the Shock's manual dampening and provide up to 400-percent change in vehicle control and response from setting one to nine.

Plus, the RS9000XL Series Shocks come housed in an extra-large shock body, allowing for cooler and more consistent performance under even the most demanding conditions. Covered by a Limited Lifetime Warranty and 90-Day Free-Ride Offer**.



Rancho RS9000™XL 9-position Adjustable Shocks deliver an exclusive nine levels of performance to stock or lifted off-road trucks, SUVs and Jeeps. Globally recognized as the first 9-position manually adjustable shocks series in the off-road market, this advanced line of shocks is ideal for off-road use, towing, hauling and more. RS9000XL 9-position shocks allow the driver to control how soft or firm the ride quality is through the shock's manual dampening and provide up to 400-percent change in vehicle control and response from setting one to nine. Plus, the RS9000XL series shocks come housed in an extra-large shock body, allowing for cooler and more consistent performance under even the most demanding conditions.

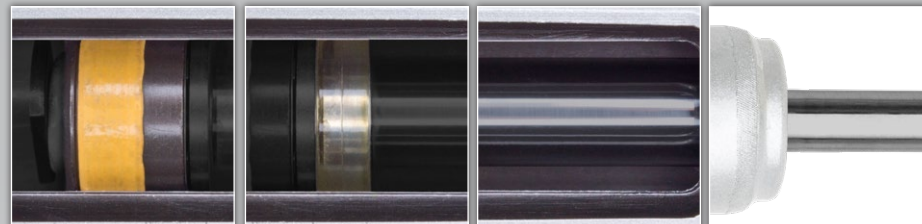
9-Position adjustment knob provides user specific tuning.

2.75-in. (70mm) body diameter* allows more fluid carrying capacity for a cooler running shock.

Tri-Tube, Mono-Flow design ensures exceptional performance.



UPGRADE YOUR SHOCKS.



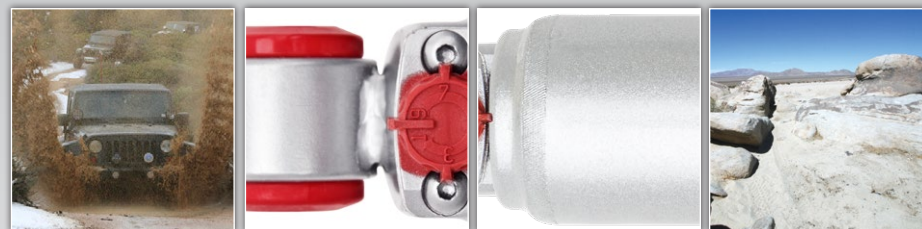
Graphite filled Fluon banded piston for increased durability.

A high strength Polyurethane bumper that helps control the rebound motion of the Shock in harsh driving conditions.

Tri-Tube, Mono-Flow design ensures exceptional performance.

Heavy-Duty 18mm diameter Nitro-Carburized rod.

Sintered Iron piston for long service life.



Low-Friction self-lubricating seal retains gas and oil.

Double welded loops with Poly-urethane bushings for enhanced performance and durability.

Premium long lasting Liquid Metallic finish.

Nitrogen Gas charged for demanding off-road conditions.

Red boot provides protection for rod and seal.

THE ULTIMATE SHOCK CHOICE FOR VERSATILITY





RS5000™ STEERING STABILIZER

Rancho® RS5000™ Steering Stabilizers are a simple and affordable way to enhance a vehicle's performance. Rancho Steering Stabilizers are ideal for off-road driving, towing and street applications. The Steering Stabilizers reduce wheel shimmy, bump steer and vibration as the Shock Series was engineered for vehicles with oversized tires and wheels. Steering Stabilizers can help reduce on or off-road driver fatigue. Rancho Steering Stabilizers are built from the foundation of the RS5000 Series Shock Absorber – the world's best-selling shock! Covered by a Limited Lifetime Warranty**.



Twin tube cellular gas design with 1 3/8-in piston.



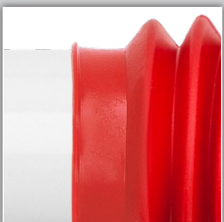
Engineered for vehicles with oversized wheels & tires.

Reduce wheel shimmy, bump steer and vibration.



Available in single and dual configurations.

Bracket kits available for vehicles without OE mounts.



Each Rancho RS5000X series shock includes a red Polyvinyl accordion protection boot, adding protection to the shock rod and oil seal during on- and off-road driving.



UPGRADE YOUR SHOCKS.

YEAR	MODEL	DESCRIPTION	PART NUMBER	BRACKET KIT
19-18	Wrangler JL	Single Steering Stabilizer - Bolts to O.E. mounts - no bracket required	RS5420	-
19-18	Wrangler JL	Dual Steering Stabilizer	RS5405 ⁰²	RS64102
18-10	Wrangler JK	Single Steering Stabilizer - Bolts to O.E. mounts - no bracket required	RS5418	-
09-07	Wrangler JK	Single Steering Stabilizer - O.E. mounting location	RS5407	RS5510 ³
18-07	Wrangler JK	HIGH-CLEARANCE STEERING STABILIZER KIT¹	RS5401	RS64100
18-07	Wrangler JK	Dual Steering Stabilizer setup ²	RS5405 ⁰²	RS64101
06-97	Wrangler TJ/LJ	Single Steering Stabilizer - Bolts to O.E. mounts - no bracket required	RS5407	-
06-97	Wrangler TJ/LJ	Optional Steering Stabilizer	RS5401 ⁴	-
01-84	Cherokee XJ	Single Steering Stabilizer - Bolts to O.E. mounts - no bracket required	RS5401	-
96-86	Wrangler YJ	Single Steering Stabilizer - Bolts to O.E. mounts - no bracket required	RS5407	-
86-46	Wrangler CJ	Steering Stabilizer Kit	RS97345	-
86-46	Wrangler CJ	Single Steering Stabilizer	RS5402	RS5508
04-99	Grand Cherokee WJ	Single Steering Stabilizer - Bolts to O.E. mounts - no bracket required	RS5409	-
98-93	Grand Cherokee ZJ	Single Steering Stabilizer - Bolts to O.E. mounts - no bracket required	RS5401	-

YEAR	MODEL	DESCRIPTION	PART NUMBER	BRACKET KIT
07-02	Avalanche 2500 2/4WD	Single Steering Stabilizer - O.E. mounting location	RS5407	RS5548
07-05	Silv./Sierra 1500HD 4WD Crew Cab	Single Steering Stabilizer - O.E. mounting location	RS5407	RS5548
03-01	Silv./Sierra 1500HD 2/4WD Crew Cab	Single Steering Stabilizer - O.E. mounting location	RS5407	RS5548
08-05	Silv./Sierra 1500HD 2WD Crew Cab Classic	Single Steering Stabilizer - O.E. mounting location	RS5407	RS5548
15-11	Silv./Sierra 2500HD 4WD	Single Steering Stabilizer - Bolts to O.E. mounts - no bracket required	RS5417	-
10-01	Silv./Sierra 2500HD 4WD (9200 GVW)	Single Steering Stabilizer - Bolts to O.E. mounts - no bracket required	RS5411	-
08-01	Silv./Sierra 2500HD 2/4WD (9200 GVW)	Single Steering Stabilizer - O.E. mounting location	RS5407	RS5548
04-99	Silv./Sierra 2500 4WD (Up to 8600 GVW)	Single Steering Stabilizer - O.E. mounting location	RS5407	RS5548
02-00	Suburban 2500 4WD (Up to 8600 GVW)	Single Steering Stabilizer - O.E. mounting location	RS5407	RS5548
06-00	Yukon XL 2500 4WD (Up to 8600 GVW)	Single Steering Stabilizer - O.E. mounting location	RS5407	RS5548
08-06	Ram 1500 4WD Mega Cab - Exc. IFS Models	Dual Steering Stabilizers	RS5416 ⁰²	RS64450
01-00	Ram 1500 4WD w/ OEM number 52106909AB, AC & AD	Single Steering Stabilizer - Bolts to O.E. mounts - no bracket required	RS5412	-
19-14	Ram 2500 & 3500	Single Steering Stabilizer - Bolts to O.E. mounts - no bracket required	RS5419	-
12-03	Ram 2500 4WD - Inc. Mega Cab, Power Wagon & Regular/Standard Cab Models	Dual Steering Stabilizers	RS5416 ⁰²	RS64450
12-09	Ram 2500 and 3500 4WD part numbers 52122370AB & 5154661AA	Single Steering Stabilizer - Bolts to O.E. mounts - no bracket required	RS5416	-
08-00	Ram 2500 and 3500 4WD w/ OEM number 52106909AB, AC & AD	Single Steering Stabilizer - Bolts to O.E. mounts - no bracket required	RS5412	-
02-97	Expedition 4WD	Single Steering Stabilizer - O.E. mounting location	RS5401	RS5567
1997	Expedition 2WD	Single Steering Stabilizer - O.E. mounting location	RS5401	RS5567
2004	F150 Heritage Series (Old body style) w/ Rancho RS6488	Single Steering Stabilizer - O.E. mounting location	RS5401	RS5567
19-08	F250 and F350 4WD w/ Rancho Lift Kit	Dual Steering Stabilizers	RS5405 ⁰²	RS64551
15-08	F250 and F350 4WD	Single Steering Stabilizer - Bolts to O.E. mounts - no bracket required	RS5415	-
07-05	F250 and F350 4WD w/ Rancho RS6510 or RS6511	Dual Steering Stabilizers	RS5405 ⁰²	RS64551
13-08	F450 and F550 2/4WD	Single Steering Stabilizer - Bolts to O.E. mounts - no bracket required	RS5415	-
09-03	Hummer H2	Single Steering Stabilizer - O.E. mounting location	RS5407	RS5548

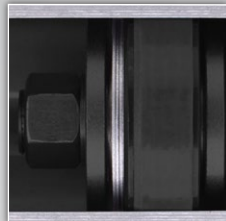
¹The installation of this kit requires at least 2-in. tall front bump stop spacers. This prevents the Steering Stabilizer from hitting the bottom of the frame at full jounce travel. ²Requires a 2-in. minimum lift to use, Stabilizer protective boots cannot be used. ³The installation of this kit requires a 2-in lift minimum with at least 2-in tall front bump stop spacers. This prevents the steering stabilizer from contacting other components at full jounce travel. ⁴Part No. RS5401. Single large cylinder Steering Stabilizer. ⁰²Quantity two required. **S.31**



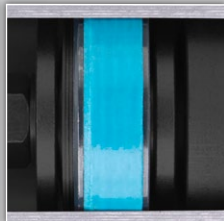
RS7000® MT STEERING STABILIZER

MONOTUBE DESIGN

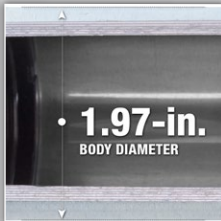
Rancho® RS7000®MT Monotube Steering Stabilizers enhance a vehicle's performance, and are ideal for off roading, towing and street applications. Utilizing Monotube Technology, Rancho Steering Stabilizers help reduce wheel shimmy, bump steer, and vibration while tightening up steering performance by damping the tie rod to the axle. The Shock was engineered for Jeeps and trucks running oversized tires and wheels. RS7000MT Steering Stabilizers, built from the foundation of the Rancho RS7000MT Series Shock, can help reduce on- and off-road driver fatigue. The series is covered by a Limited Lifetime Warranty**.



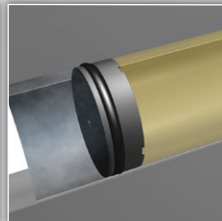
Ten-stage velocity sensitive valving provides tuning specific for each vehicle.



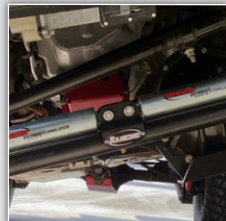
Huge 46mm working piston with Fluon band for consistent sealing between the piston and monotube which delivers better control and increased durability compared to conventional piston designs.



1.97-Inch (50mm) Monotube body provides improved heat dissipation over other twin-tube shocks.

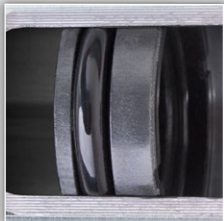


Monotube design with high pressure Nitrogen gas charge allows for quicker damping response time.

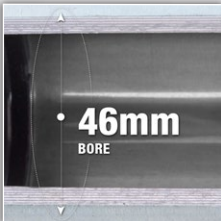


Available in single and dual configurations.

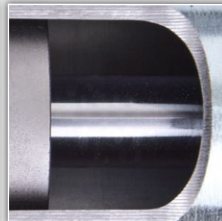
Bracket kits available for vehicles without OE mounts.



Full-floating dividing piston and high pressure Nitrogen gas maintains constant pressure against the hydraulic oil, eliminating possible aeration and shock fade.



46mm Bore Monotube construction - Ideal for larger light trucks, SUVs and more.



14mm Hardened Steel piston rod for superior strength over standard 11mm rods.



UPGRADE YOUR SHOCKS.

YEAR	MODEL	DESCRIPTION	PART NUMBER	BRACKET KIT
19-18	Wrangler JL	Dual Steering Stabilizer	RS7405 ⁰²	RS64102
18-10	Wrangler JK	Single Steering Stabilizer - Bolts to O.E. mounts - no bracket required	RS7418	-
09-07	Wrangler JK	Single Steering Stabilizer - O.E. mounting location	RS7407	RS5510 ⁹
18-07	Wrangler JK	HIGH-CLEARANCE STEERING STABILIZER KIT¹	RS7401	RS64100
18-07	Wrangler JK	Dual Steering Stabilizer setup ²	RS7405 ⁰²	RS64101
06-97	Wrangler TJ/LJ	Single Steering Stabilizer - Bolts to O.E. mounts - Inc. Rubicon & Unlimited	RS7407	-
01-84	Cherokee XJ	Single Steering Stabilizer - Bolts to O.E. mounts - no bracket required	RS7401	-
96-86	Wrangler YJ	Single Steering Stabilizer - Bolts to O.E. mounts - no bracket required	RS7407	-
98-93	Grand Cherokee ZJ	Single Steering Stabilizer - Bolts to O.E. mounts - no bracket required	RS7401	-

YEAR	MODEL	DESCRIPTION	PART NUMBER	BRACKET KIT
07-02	Avalanche 2500 2/4WD	Single Steering Stabilizer - O.E. mounting location	RS7407	RS5548
07-05	Silv./Sierra 1500HD 4WD Crew Cab	Single Steering Stabilizer - O.E. mounting location	RS7407	RS5548
03-01	Silv./Sierra 1500HD 2/4WD Crew Cab	Single Steering Stabilizer - O.E. mounting location	RS7407	RS5548
08-05	Silv./Sierra 1500HD 2WD Crew Cab Classic	Single Steering Stabilizer - O.E. mounting location	RS7407	RS5548
10-01	Silv./Sierra 2500HD 4WD (9200 GVW)	Single Steering Stabilizer - Bolts to O.E. mounts - no bracket required	RS7411	-
08-01	Silv./Sierra 2500HD 2/4WD (9200 GVW)	Single Steering Stabilizer - O.E. mounting location	RS7407	RS5548
04-99	Silv./Sierra 2500 4WD (Up to 8600 GVW)	Single Steering Stabilizer - O.E. mounting location	RS7407	RS5548
02-00	Suburban 2500 4WD (Up to 8600 GVW)	Single Steering Stabilizer - O.E. mounting location	RS7407	RS5548
06-00	Yukon XL 2500 4WD (Up to 8600 GVW)	Single Steering Stabilizer - O.E. mounting location	RS7407	RS5548
08-06	Ram 1500 4WD Mega Cab - Exc. IFS Models	Dual Steering Stabilizers	RS7416 ⁰²	RS64450
01-00	Ram 1500 4WD w/ OEM number 52106909AB, AC & AD	Single Steering Stabilizer - Bolts to O.E. mounts - no bracket required	RS7412	-
12-03	Ram 2500 4WD - Inc. Mega Cab, Power Wagon & Regular/Standard Cab Models	Dual Steering Stabilizers	RS7416 ⁰²	RS64450
12-09	Ram 2500 and 3500 4WD part numbers 52122370AB & 5154661AA	Single Steering Stabilizer - Bolts to O.E. mounts - no bracket required	RS7416	-
08-00	Ram 2500 and 3500 4WD w/ OEM number 52106909AB, AC & AD	Single Steering Stabilizer - Bolts to O.E. mounts - no bracket required	RS7412	-
02-97	Expedition 4WD	Single Steering Stabilizer - O.E. mounting location	RS7401	RS5567
1997	Expedition 2WD	Single Steering Stabilizer - O.E. mounting location	RS7401	RS5567
2004	F150 Heritage Series (Old body style) w/ Rancho RS6488	Single Steering Stabilizer - O.E. mounting location	RS7401	RS5567
19-08	F250 and F350 4WD w/ Rancho Lift Kit	Dual Steering Stabilizers	RS7405 ⁰²	RS64551
15-08	F250 and F350 4WD	Single Steering Stabilizer - Bolts to O.E. mounts - no bracket required	RS7415	-
07-05	F250 and F350 4WD w/ Rancho RS6510 or RS6511	Dual Steering Stabilizers	RS7405 ⁰²	RS64551
13-08	F450 and F550 2/4WD	Single Steering Stabilizer - Bolts to O.E. mounts - no bracket required	RS7415	-
09-03	Hummer H2	Single Steering Stabilizer - O.E. mounting location	RS7407	RS5548

¹The installation of this kit requires at least 2-in. tall front bump stop spacers. This prevents the Steering Stabilizer from hitting the bottom of the frame at full jounce travel. ²Requires a 2-in. minimum lift to use, Stabilizer protective boots cannot be used. ³The installation of this kit requires a 2-in lift minimum with at least 2-in tall front bump stop spacers. This prevents the steering stabilizer from contacting other components at full jounce travel. ⁴Quantity two required.