

RANCHO

PERFORMANCE SUSPENSION & SHOCKS

PERFORMANCE JEEP PRODUCTS





LIFT YOUR RIDE.



NEW

2-IN. & 3.5-IN. SPORT SUSPENSION SYSTEMS

Experience the versatile, purpose-built Rancho® 2 & 3.5-inch Sport Suspension Systems for the Jeep® Wrangler JL Unlimited 4WD. These **NEW**, 100-percent bolt-on systems from Rancho Performance Suspension and Shocks allows for the use of up to 35-inch tires for capable, all-around performance. The Sport Systems also feature a **NEW** Rancho exclusive innovation to the Jeep JL Unlimited: Rancho RS5000™X or RS9000™XL Shocks with brand-new **Dynamic Rebound Spring (DRS) Technology**. New DRS Technology is a unique internal system that includes a precisely tuned metal spring and fortified interior construction to provide additional control, reduce body roll and prevent rod overextension inside the shock.

These new systems include a pair of front and rear corner-specific progressive rate coil springs, specifically tuned to provide superior on-road comfort and off-road performance. The corner-specific springs ensure your JL Unlimited maintains a perfectly level stance and ride – even during towing or heavy loading. To maintain travel integrity, the 2-in. Sport System includes front and rear 2-inch bump stop extensions, and front 3-in. and rear 2-in. for the 3.5-in. System. Adding lift and extended travel, the systems also includes front and rear extended sway bar end links, and an e-brake line relocation bracket. These systems are precision engineered to be 100-percent compatible with the Jeep Factory Electronic Stability System. Designed with 35-inch tires and 17-inch wheels with 4.5-inch of backspacing. Kits also allow the reuse of OE wheels and tires. Backed by a Limited Lifetime Warranty* *.

Rancho® RS5000™ X or RS9000™ XL Shocks – includes exclusive Rancho DRS Technology!

- Corner-specific, tuned progressive rate coil springs
- Bump stop extensions
- Front and rear extended sway bar end links
- E-brake line relocation bracket
- All brackets fabricated from high-strength, low-alloy steel

- Designed with 35-inch tires
- Compatible with OE wheels and tires
- Installs easily – 100-percent bolt-on system and detailed, full-color installation guide included!

DYNAMIC REBOUND SPRING (DRS) TECHNOLOGY:

NEW DRS Technology is a unique internal system that includes a precisely tuned metal spring and fortified interior construction to provide additional control, reduce body roll and prevent rod overextension inside the shock.



J.2

WRANGLER JL

PART No. RS66122BR5 2-in. Lift Height
WRANGLER JL UNLIMITED RUBICON

RS5000™X Shocks included.

PART No. RS66124BR5 3.5-in. Lift Height
WRANGLER JL UNLIMITED NON-RUBICON

RS5000™X Shocks included.

PART No. RS66122BR9 2-in. Lift Height
WRANGLER JL UNLIMITED RUBICON

RS9000™XL Shocks included.

PART No. RS66124BR9 3.5-in. Lift Height
WRANGLER JL UNLIMITED NON-RUBICON

RS9000™XL Shocks included.



2019 SEMA BEST NEW OFF-ROAD PRODUCT



Rancho RS66124BR5 with 35-in. tires. Trimming or modification may be required to provide proper tire clearance. Actual tire size varies between manufacturers. B designates black finish. J.3

2019-18 WRANGLER JL UNLIMITED 4WD

3.5-IN. & 4.5-IN. CRAWLER SHORT ARM SUSPENSION SYSTEMS

The NEW RS66123B & RS66125B Crawler Short Arm Systems are the result of continuous improvements done by Rancho® to give you the best possible on and off-road experience for your Wrangler JL. These kits include progressive rate coil springs and fully adjustable control arms with D2 bushings to give you improved comfort, durability and worry free operation. These kits also feature our NEW heavy-duty front and rear adjustable track bars with D2 bushings to center the axles. The D2 bushings found in our control arms and track bars feature PTFE for grease-free operation allowing the sleeve to rotate in the bushing without resistance reducing wear. Precise adjustments can be made while it's still installed on the vehicle. The JL-specific shocks also features our **Dynamic Rebound Spring (DRS) Technology**. This DRS Technology features a precisely tuned metal spring that provides additional control, reduces body roll, and prevents overextension. Aftermarket driveshaft is required for this kit to achieve maximum front axle articulation. This kit allows you to run up to 37-inch tires and is backed by a Limited Lifetime Warranty*.

DYNAMIC REBOUND SPRING (DRS) TECHNOLOGY:

NEW DRS Technology is a unique internal system that includes a precisely tuned metal spring and fortified interior construction to provide additional control, reduce body roll and prevent rod overextension inside the shock.

PART No. **RS66123B** 3.5-in. Lift Height WRANGLER JL UNLIMITED RUBICON

Shocks sold separately:

RS5000™X **EXTENDED TRAVEL RS5000™X**
Front **RS55065** Front **RS55067***
Rear **RS55068** Rear **RS55068**

RS9000™XL **EXTENDED TRAVEL RS9000™XL**
Front **RS999065** Front **RS999067***
Rear **RS999068** Rear **RS999068**

PART No. **RS66125B** 4.5-in. Lift Height WRANGLER JL UNLIMITED NON-RUBICON

Shocks sold separately:

RS5000™X **EXTENDED TRAVEL RS5000™X**
Front **RS55065** Front **RS55067***
Rear **RS55068** Rear **RS55068**

RS9000™XL **EXTENDED TRAVEL RS9000™XL**
Front **RS999065** Front **RS999067***
Rear **RS999068** Rear **RS999068**



ALLOWS ADJUSTMENT FOR CASTER AND PINION ANGLES WHILE INSTALLED

UPGRADE YOUR SHOCKS.

YEAR	MODEL	RAISED HEIGHT	RS5000™X		RS9000™XL	
			Front	Rear	Front	Rear
2019-18	Wrangler JL 4WD	0 -in.	RS55063	RS55064	RS999063	RS999064
2019-18	Wrangler JL Rubicon 4WD	2 -in.	RS55065	RS55066	RS999065	RS999066
2019-18	Wrangler JL Rubicon 4WD	3.5-in.	RS55065	RS55068	RS999065	RS999068
	Extended Travel Shock		RS55067*	RS55068	RS999067*	RS999068
2019-18	Wrangler JL Non-Rubicon 4WD	3.5-in.	RS55065	RS55066	RS999065	RS999066
2019-18	Wrangler JL Non-Rubicon 4WD	4.5-in.	RS55065	RS55068	RS999065	RS999068
	Extended Travel Shock		RS55067*	RS55068	RS999067*	RS999068

1.4 *Extended Travel Shock - Requires Aftermarket Driveshaft

LIFT YOUR RIDE.

RockGEAR™



DIFFERENTIAL GLIDE PLATES

Rancho® front and rear Differential Glide Plates for the Jeep® Wrangler JL mount to the front or rear axle casting, and allow for a much smoother glide over obstacles forward and backwards. These Glide Plates protect your differential casting from direct contact in severe offroad conditions. Works with OE and most aftermarket differential covers. Manufactured from 1/4-in. high-strength, low-alloy steel and covered in a durable red powder-coated finish.

- Mounts to front or rear axle casting
- Protects casting from direct contact
- Works with O.E. and most aftermarket differential covers
- Durable red powder-coated finish
- Allows for a much smoother glide over obstacles - forwards and backwards

2019-18 JEEP WRANGLER JL

DANA 30 **DANA 44**
Front **RS62124** Front **RS62116**
Rear **RS62117**



DIFFERENTIAL COVER

The heavy-duty Rancho® RockGear™ Differential Cover is constructed from high-strength nodular iron and was engineered to include an oversized, fill-to-level plug that ensures optimum housing fluid levels. The external ribbed construction allows for optimized approach and departure angles, helping to glide over rocks and obstacles as compared to flat covers. The Rancho® Differential Cover is available in a red powder-coated finish. All Rancho RockGEAR components are covered by a Limited One Year Warranty.

- Added axle and internal gear protection
- Manufactured from high-strength nodular iron
- Ribbed external construction for added strength
- Durable red or powder-coated finish
- Off-set over-sized fill plug for increased fluid capacity and easier/quicker filling



REAR SHOCK AND CONTROL ARM SKIDS

Rancho® Jeep® JL Rear Shock and Control Arm Skids are designed to protect your JL control arms and shock absorbers from rocks and other obstacles. Made from 1/4-in. high-strength, low-alloy steel, these skids will glide over obstacles and keep you moving down the trail. The Rancho Rear Shock and Control Arm Skids bolt-on using the shock and supplied control arm bolts, and are powder coated in a durable Rancho Red. Driver and passenger side skids included.

- Mounts to rear lower control arm and shock bolt
- Constructed of durable 1/4-in. HSLA steel and powder coated Rancho Red
- All hardware included for installation
- Prevents damage to suspension components
- Sold as a pair

2019-18 JEEP WRANGLER JL

Rear **RS62125**



2019-18 JEEP WRANGLER JL

DANA 44
Front **RS62119** Rear **RS62120**



GEOMETRY CORRECTION BRACKETS

Rancho® Jeep® JL Geometry Correction Brackets deliver perfect fit, finish and performance. These next-level Rancho Jeep JL Geometry Correction Brackets keep the control arms at factory angles to deflect road harshness, reduce brake dive and allow for proper caster angle after the addition of an aftermarket lift kit...maximizing the performance of your Jeep Wrangler JL. This **NEW** bracket fits Jeeps running lift kits from 2 - 4.5-inches utilizing our unique 3-hole upper control arm locator. Rancho engineering fit and finish delivers a one-piece welded design that will bolt-up directly to the factory locations out of the box, saving you time and aggravation.

Corrects control arm alignment geometry to factory specs eliminating the need for adjustable control arms or cam bolts for caster correction

Fixed adjustment location for each height with an option for additional caster if needed

Works on 2 - 4.5-inch lift kits that utilize factory upper and lower control arms

Compatible with 2 door, 4 door, non-Rubicon, and Rubicon Models

One-piece welded design with a durable, black power-coated finish

No assembly required! Out of box and on to your Jeep...an easy DIY project!

Installs easily - 100-percent bolt-on system and detailed,

full-color installation guide included!

PART No. RS62118B

2019-18 JEEP WRANGLER JL with 2 - 4.5-in. Lift Height

All Models



TRACK BAR SUPPORT BRACE

The heavy-duty Rancho® Wrangler JL Track Bar Support Brace is manufactured from 3/16 in. thick high-strength, low-alloy steel and is a direct fit to your Wrangler JL. This brace mounts directly over the factory track bar bracket, adding additional support. The brace is intended to help reduce bracket fatigue and the chance of the factory weld failing. The brace also includes all the necessary hardware needed for installation. The Rancho® Wrangler JL Track Bar Support Brace is powder-coated black for protection for years to come.

3/16 in. thick, high-strength, low-alloy steel

Class 10.9 hardware included

Direct-fit to factory location

Durable black powder-coated finish

PART No. RS62133

2019-18 JEEP WRANGLER JL

All Models



BUMP STOP EXTENSION

Rancho® JL Front Lower Bump Stop Pads are designed to work in conjunction with the OEM bump stop and features the hardware needed for simple bolt-on installation. Proper bump stop length is critical to prevent damage to suspension components, shock absorbers and fenders. These high-grade Polyurethane bump stop pads extend the effective bump stop length by 3-in.

Prevents damage to suspension components, shock absorbers & fenders

All hardware included for installation

High-grade Polyurethane

3-in. height

PART No. RS62127B

2019-18 JEEP WRANGLER JL

All Models



FRONT DISCONNECT SWAY BAR LINK KIT

Rancho®'s Adjustable Front JL Quick Disconnect Sway Bar End Links quickly detach at the lower mount to instantly improved off-road performance. Quickly disconnect the lower Sway Bar End Link and swing it up out of the way for unhindered axle articulation while off-roading. Pivot around the OEM inspired ball and socket upper mount to the powder coated sway bar relocation brackets, tucking them safely out of the way.

Precisely adjust the massive 3/4-in. diameter DOM link tube while it's still installed on the vehicle. Forged lower ends feature Rancho's D2 Synthetic high-articulation bushings that are maintenance free. 3/8-in. thick HSLA steel axle mounted relocation brackets reduce any chance of interference with aftermarket track bar brackets. When connected for street use, the link provides immediate reaction during sway bar loading to eliminate excess play. This results in improved lateral control and steering response compared to the stock rubber sway bar link bushings.

Frame mounted sway bar relocation brackets and all necessary mounting hardware included

Precisely adjust the heavy-duty 3/4-in. diameter DOM link tube while it's still installed on the vehicle

Forged lower ends feature Rancho's D2 Synthetic high-articulation bushings that are maintenance free

3/8-in. thick HSLA steel axle mounted relocation brackets reduce any chance of interference with

aftermarket track bar brackets

Quickly disconnects for improved off-road performance

Powdercoated links & brackets for lasting performance & good looks

Hardware clear Zinc plated for maximum corrosion resistance

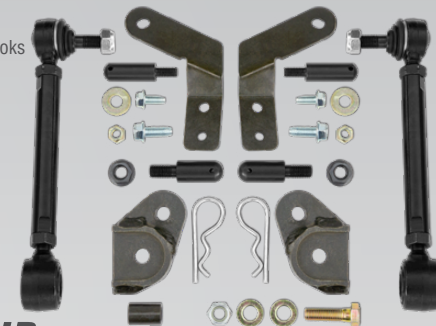
Easy bolt-on installation

Adjustable for 2 - 6-in. lift heights

PART No. RS62126B

2019-18 WRANGLER JL w/ 2 - 6-in. Lift Height

Non-Rubicon Models Only



FRONT LOWER BUMPER SKID

The heavy-duty Rancho® Wrangler JL Front Lower Bumper Skid is manufactured from 3/16 in. thick high-strength, low-alloy steel and is a direct fit to your Wrangler JL. This skid will work on all Wrangler JL applications, including some aftermarket bumpers. Finished with a durable black powder-coat, this skid will provide additional support and protection to your Jeep.

3/16 in. thick, high-strength, low-alloy steel

Re-use factory hardware for installation

Direct-fit to factory location

Durable black powder-coated finish

PART No. RS62134

2019-18 JEEP WRANGLER JL

All Models - requires the use of an aftermarket bumper



COIL SPRING ISOLATOR

Correct the spring bow of your aftermarket performance suspension system front coil springs with this Rancho® Coil Spring Isolator for the 2018 Jeep® Wrangler JL. Some companies lifted front coil springs that utilize the factory isolator may flex resulting in a bow which could cause it to rub against the frame. Rancho's JL Coil Spring Isolator corrects this issue.

Corrects the bow of the front aftermarket lifted coil spring

Installs quickly without specialized tools

Kit includes two lower front Coil Spring Isolators

PART No. RS62123

2019-18 JEEP WRANGLER JL

All Models



ADJUSTABLE CONTROL ARMS

Rancho® has **NEW** front and rear, upper and lower Adjustable Control Arms for your stock or lifted Jeep®. The new Arms work on a range from stock to 4.5-inches and the front upper arms allow caster and pinion angle adjustments on the vehicle. This will save time on the alignment rack to allow the setting to be made without having to remove the upper arm. The Arms are made of heavy duty DOM tubing for improved strength to handle off road obstacles. Lower Arms are bent similar to the factory design to allow for larger wheels and tires. The Upper Control Arms feature forged ends using our D2 synthetic high articulation bushings that self-center and are completely grease free. For the ultimate in convenience, a rebuild kit is available and sold separately.

2019-18 WRANGLER JL with 0 - 4.5-in. Lift Height

All Models

Front Upper RS66164B
Front Lower RS66165B

Rear Upper RS66157B
Rear Lower RS66158B



DUAL STABILIZER BRACKET

Rancho® Dual Steering Stabilizer Brackets are designed to help you mount two Steering Stabilizers to your lifted Jeep® JL without any modifications. They are made of high-strength, low-alloy steel and include the mounting hardware for an easy installation.

Uses either two RS5405 or two RS7405 Stabilizers for twice the control forces*

The installation of this kit requires a 2-in. lift minimum with at least 2-in. tall front bump stop spacers. This prevents the Steering Stabilizer from contacting other components at full jounce travel

1/4-in. thick, high-strength, low-alloy steel axle bracket

Direct bolt-up to factory and most aftermarket tie rods

Direct bolt-up to factory steering linkage

Kit includes brackets with hardware

Black powder-coat finish

PART No. RS64102

2019-18 JEEP WRANGLER JL

All Models. Uses either two RS5405 or two RS7405 Stabilizers for twice the control forces*

* Sold Separately



Rancho RS66124BR5 with 38-in. tires and RS7000-MT Dual Steering Stabilizers. Trimming or modification may be required to provide proper tire clearance. Actual tire size varies between manufacturers. B designates black finish.

COIL SPRING KIT

Rancho®'s Jeep® Wrangler JL corner-specific progressive rate Coil Springs are specifically tuned to provide superior on-road comfort and off-road performance. The corner-specific Springs ensure your Jeep JL maintains a perfectly level stance and ride – even during towing or heavy loading. These Rancho JL Front Coil Springs provide up to 3.5-in. of lift height on a Rubicon and up to 4.5-in. of height on a Non-Rubicon. The addition of aftermarket bumpers, sliders, winches, etc. will net differences in lift height.

Up to 3.5-in. or 4.5-in. lift height depending on application

Corner-specific progressive rate tuned specifically for the Jeep Wrangler JL

Superior on-road comfort and off-road performance

Designed to allow for the use of larger wheel/tire combinations without body or fender modification

PART No. RS80125B FRONT SPRINGS
2019-18 WRANGLER JL 4 DOOR

Rubicon Models - 2-in. Lift Height
Non-Rubicon Models - 3.5-in. Lift Height

PART No. RS80127B FRONT SPRINGS
2019-18 WRANGLER JL 4 DOOR

Rubicon Models - 3.5-in. Lift Height
Non-Rubicon Models - 4.5-in. Lift Height
Requires the usage of a coil spring isolator, RS62123

PART No. RS80126B REAR SPRINGS
2019-18 WRANGLER JL 4 DOOR

Rubicon Models - 2-in. Lift Height
Non-Rubicon Models - 3.5-in. Lift Height

PART No. RS80128B REAR SPRINGS
2019-18 WRANGLER JL 4 DOOR

Rubicon Models - 3.5-in. Lift Height
Non-Rubicon Models - 4.5-in. Lift Height



ADJUSTABLE TRACK BAR

Rancho®'s **NEW** HD Adjustable Track Bars work on suspension systems from 2- to 4.5-inches and allow you to center your Jeep® JL's front axle in the proper position. The D2 synthetic, high-articulation bushings in the Track Bar deliver superior dampening plus improved ride and handling characteristics. The D2 bushing has a firmer inner bearing material and a softer outer material to dampen noise, vibration, and harshness (NVH).

PART No. RS62128 FRONT
2019-18 WRANGLER JL w/ 2 - 4.5-in. Lift Height

All Models

PART No. RS62131 REAR
2019-18 WRANGLER JL w/ 2 - 4.5-in. Lift Height

All Models



FRONT TRACK BAR

REAR TRACK BAR

For The Ultimate Off-Road Experience

4-IN. CRAWLER LONG ARM SYSTEM

Fits up to 37-in. tires
 Front and rear progressive rate coil springs
 Fully adjustable upper and lower control arms with D2 bushings
 Extended length front and rear sway bar end link
 Heavy-duty front and rear adjustable track bars
 Upgraded front and rear bump stop spacers
 Front and rear extended length brake lines
 High-articulation front and rear long arm design
 Adjustable front and rear upper link design
 Will not affect the Electronic Stability Control System
 No exhaust modifications required for 2011-2007
 Brackets are high-strength, low-alloy steel

PART No. RS66115B

Transmission Cross Member **REQUIRED** and sold separately.
 Cross over exhaust pipe RS720003 required for 18-12 JK

Shocks and Transmission Cross Member sold separately:

RS5000™X	RS7000®MT	RS9000™XL
Front RS55331	Front RS7331	Front RS999331
Rear RS55332	Rear RS7330	Rear RS999332

Cross Member

2011-07 RS886101	2018-12 RS886102
-------------------------	-------------------------

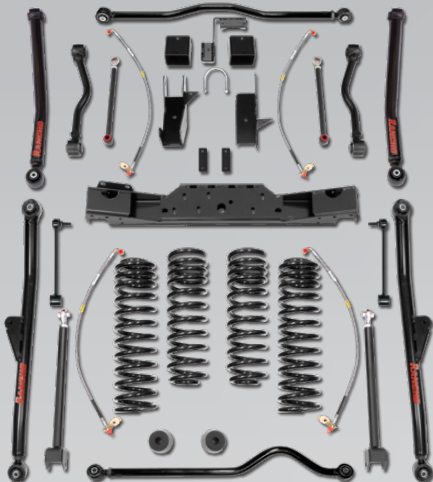
Transmission Cross Member **REQUIRED** and sold separately.

TRANSMISSION CROSS MEMBER PART NO. RS886101 OR RS886102

Not included in system. Must be purchased separately

DONT FORGET THE STEERING STABILIZER
see page S.33 and page S.35

LIFT YOUR RIDE.



4-IN. CRAWLER SHORT ARM SYSTEM PART No. RS66114B

Fits up to 37-in. tires
 Front and rear progressive rate coil springs
 Fully adjustable upper and lower control arms with D2 bushings
 Extended length front sway bar end link
 Upgraded front and rear bump stop spacer
 Heavy-duty front and rear adjustable track bars
 Front extended length brake lines
 Rear brake line drop brackets
 Rear sway bar spacers included
 Will not affect the Electronic Stability Control System
 Brackets are high-strength, low-alloy steel
 100-percent bolt-on system

Cross over exhaust pipe RS720003 required for 18-12 JK

Shocks sold separately:

RS5000™X	RS7000®MT	RS9000™XL
Front RS55331	Front RS7331	Front RS999331
Rear RS55332	Rear RS7330	Rear RS999332

DONT FORGET THE STEERING STABILIZER
see page S.33 and page S.35



D2 BUSHINGS

RANCHO D2 CONTROL ARM AND TRACK BAR BUSHINGS
SELF CENTERING - SELF LUBRICATING



STEEL SLEEVE
Re-enforces Poly bushing to self-center sleeve and add durability

PTFE COATED
For lifetime grease-free operation

FULL FLOATING STEEL SLEEVE



Rancho RS66115B with 37-in. tires. Trimming or modification may be required to provide proper tire clearance. Actual tire size varies between manufacturers. B designates black finish. * For more information visit www.rancho.com

4-IN. SPORT SYSTEM PART No. RS66102B

Fits up to 37-in. tires

Cross over exhaust pipe RS720003 required for 18-12 JK

Shocks sold separately:

RS5000™MX	RS7000®MT	RS9000™XL
Front RS55331	Front RS7331	Front RS999331
Rear RS55332	Rear RS7330	Rear RS999332

DONT FORGET THE STEERING STABILIZER
see page S.33 and page S.35

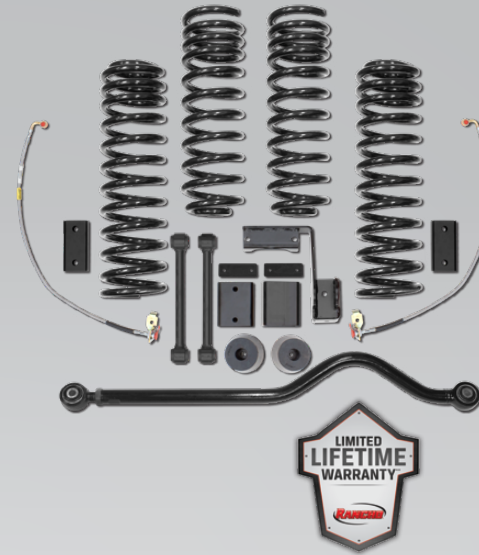
Front and rear **progressive rate** coil springs
Rancho® geometry correction brackets
Front adjustable track bar included
Extended length front sway bar end link
Upgraded front and rear bump stop spacer
Front extended length brake lines included
Rear axle track bar and brake line drop brackets
Rear sway bar spacers included
Will not affect the Electronic Stability Control System
Brackets are high-strength, low-alloy steel
100-percent bolt-on system



LIFT YOUR RIDE.

3 - 3.5-IN. PROGRESSIVE SPORT

Fits up to 35-in. tires
Front and rear **progressive rate** coil springs
Front adjustable track bar included
Extended length front sway bar end link
Upgraded front and rear bump stop spacer
Front extended length brake lines included
Rear axle track bar and brake line drop brackets
Brackets are high-strength, low-alloy steel
Will not affect the Electronic Stability Control System
100-percent bolt-on system



PART No. RS66110B

Cross over exhaust pipe RS720003 required for 18-12 JK

Shocks sold separately:

RS5000™MX	RS7000®MT	RS9000™XL
Front RS55329	Front RS7329	Front RS999329
Rear RS55330	Rear RS7330	Rear RS999330



2-IN. SPORT SYSTEM

Fits up to 33-in. tires
Front and rear **progressive rate** coil springs
Upgraded front bump stop spacer
RS5000™MX or RS9000™XL Rancho Shocks included
Rear brake line drop brackets
Will not affect the Electronic Stability Control System
100-percent bolt-on system



PART No. RS66118BR5

JEEP WRANGLER JK 4WD 2 DOOR

RS5000™MX Shocks and Coil Springs included.

PART No. RS66118BR9

JEEP WRANGLER JK 4WD 2 DOOR

RS9000™XL Shocks and Coil Springs included.

PART No. RS66119BR5

JEEP WRANGLER JK 4WD 4 DOOR

RS5000™MX Shocks and Coil Springs included.

PART No. RS66119BR9

JEEP WRANGLER JK 4WD 4 DOOR

RS9000™XL Shocks and Coil Springs included.

UPGRADE YOUR SHOCKS.

YEAR	MODEL	RAISED HEIGHT	RS5000™MX		RS7000®MT		RS9000™XL	
			Front	Rear	Front	Rear	Front	Rear
2018-07	Wrangler JK 4WD	0 - 2-in.	RS55326	RS55328	RS7326	RS7328	RS999326	RS999328
2018-07	Wrangler JK 2WD	0 - 2-in.	RS55326	RS55328	RS7326	RS7328	RS999326	RS999327
2018-07	Wrangler JK 4WD	3 - 3.5-in.	RS55329	RS55330	RS7329	RS7330	RS999329	RS999330
2018-07	Wrangler JK 4WD	4-in.	RS55331	RS55332	RS7331	RS7330	RS999331	RS999332



Rancho RS66102B with 37-in. tires. Trimming or modification may be required to provide proper tire clearance. Actual tire size varies between manufacturers. B designates black finish.

3.5-IN. SHORT ARM SYSTEM

Experience the Rancho® difference and uncompromising performance on- and off-road with the redesigned Rancho 3.5-inch Short Arm Suspension Kit. This kit allows you to run up to 35-inch tires on your Wrangler TJ/LJ and it comes complete with a Pitman Arm, Track Bar, Sway Bar Disconnects and **NEW** Adjustable Lower Control Arms. The **NEW** Control Arms allow for the adjustment of caster and pinion angle and have forged ends featuring Rancho's D2 grease-free synthetic high articulation bushings that self-center. Complete your performance suspension by choosing the Rancho shocks that best suit your driving needs! The Rancho brand offers a Limited Lifetime Warranty** for this Suspension System.

PART No. RS66113B

Shocks sold separately:

RS5000™MX	RS7000®MT	RS9000™XL
Front RS55255	Front RS7255	Front RS999255
Rear RS55256	Rear RS7256	Rear RS999256

NOW INCLUDES
FRONT PROGRESSIVE RATE COIL SPRINGS



TJ/LJ ADJUSTABLE TRACK BAR
Sold separately, see page J.19 for details

LIFT YOUR RIDE.



J.14 Rancho RS66113B with 35-in. tires

2.5-IN. SPORT SYSTEM PART No. RS6503B

REPLACES RS6503

Fits up to 33-in. tires

No exhaust modifications required

NEW adjustable lower control arms with D2 bushings

Front and rear coil springs

Transfer case shifter relocation brackets and drop down spacers to allow use of factory drive-shafts

Upgraded rear bump stop spacer

Shocks sold separately:

RS5000™MX	RS7000®MT	RS9000™XL
Front RS55239	Front RS7239	Front RS999239
Rear RS55241	Rear RS7241	Rear RS999241

This suspension system was developed using a 33 x 12.5 x R15 tire on a 15 x 8-in. wheel with 3.75 B.S.



3.5-IN. COIL SPRING KIT

Rancho Performance 3.5-in. Lift Coil Springs are designed to enhance off-road control. These coil springs are specifically designed for each individual vehicle to increase ride height for those larger wheel/tire combinations on more rugged terrain and are protected by a durable, corrosion-resistant BLACK powder coat finish.

Designed to allow for the use of larger wheel/tire combinations
Ideal for providing extra room to fit larger tires, replacing worn stock parts and restoring height lost to a heavy winch or bumper
Enhances off-road control while maintaining a firm ride
Made from top-end steel and tested to perform with the best
Sold in pairs



PART No. RS6416B FRONT (shown)

PART No. RS6417B REAR

UPGRADE YOUR SHOCKS.

YEAR	MODEL	RAISED HEIGHT	RS5000™MX		RS7000®MT		RS9000™XL	
			Front	Rear	Front	Rear	Front	Rear
2006-97	Wrangler TJ/LJ 4WD	0-in.	RS55128	RS55240	RS7128	RS7240	RS999128	RS999240
2006-97	Wrangler TJ/LJ 4WD	5 - 6-in.	-	-	RS7061	RS7062	RS999061	RS999062

Rancho RS6503B with 33-in. tires. Trimming or modification may be required to provide proper tire clearance. Actual tire size varies between manufacturers. B designates black finish.

2001-84 CHEROKEE XJ 4WD

3.5-IN. PERFORMANCE SUSPENSION

The 3.5-in. Rancho® XJ Suspension System is the perfect choice for those who are looking to do some on- and off-road driving with their Cherokee. The kit includes front upper adjustable control arms and lower control arms for increased strength over stock; replacement front coil springs and rear leaf springs; front swaybar links; rear shackles; shims; U-bolts; extended length front brake lines and a rear brake line to rear axle; and a new front adjustable trackbar that helps to maintain proper geometry. The system also will allow you to run 31-in. tires without trimming or 33-in. tires with trimming. Pair this kit with your favorite set of Rancho shocks and you have an XJ that will perform well on the road and provide increased flexibility and versatility off road.

Allows for 31-in. tires untrimmed or 33-in. tires with trimming
 Front extended length brake lines and a rear brake line to rear axle
Front upper and lower adjustable control arms w/ D2 bushings
 Front adjustable trackbar
 Heavy-duty DOM tubular lower control arms
 Front coil springs and rear leaf springs
 Front swaybar links
 U-bolts, shims and drop shackles

NOW INCLUDES
FRONT PROGRESSIVE RATE COIL SPRINGS

NEW



XJ ADJUSTABLE TRACK BAR
 Sold separately, see page J.19 for details

PART No. RS66002B/RS66003B

Shocks sold separately:

RS5000™MX	RS7000®MT	RS9000™MXL
Front RS55239	Front RS7239	Front RS999239
Rear RS55245	Rear -	Rear RS999245

RS66002B is for use with the O.E. Chrysler rear axle.
RS66003B is for use with the O.E. Dana rear axle.
 (Installation of a slip yoke eliminator and replacement driveshaft on the stock transfer case is recommended).



UPGRADE YOUR SHOCKS.

YEAR	MODEL	RAISED HEIGHT	RS5000™MX		RS7000®MT		RS9000™MXL	
			Front	Rear	Front	Rear	Front	Rear
01-84	Wrangler XJ 4WD	0-in.	RS55128	RS55129	RS7128	RS7129	RS999128	RS999129
01-84	Wrangler XJ 4WD w/ Rancho System	2.5-in.	RS55239	-	RS7239	RS7219	RS999239	RS999129

Rancho RS66002B with 33-in. tires. Trimming or modification may be required to provide proper tire clearance. Actual tire size varies between manufacturers. B designates black finish.

1996-86 WRANGLER YJ 4WD

WRANGLER CJ 4WD 1986-46

Rancho RS6444 with 33-in. tires



2.5-IN. SUSPENSION HARDWARE KIT

For use with Rancho® 2.5-in. Leaf Springs

Allows up to 33-in. tires

Rancho springs are designed to maintain a soft factory ride

Springs are carefully shot peened & finished in black

Leaf spring bushings included

Leaf springs are designed to re-use factory U-bolts

Leaf springs are designed to control torque roll while providing equal traction through limited axle wind-up



U-Bolt replacement kit also available.
 This suspension system was developed using a 33 x 12.5 x R15 tire.

PART No. RS6444

For use with Rancho Leaf Springs RS44050 and RS44150:

Primary Suspension System	Front Springs	Front Kits	Rear Springs	Rear Kits
RS6444	RS44050	RS720	RS44150	RS721

Shocks sold separately:

RS5000™MX	RS7000®MT	RS9000™MXL
Front RS55168	Front RS7168	Front RS999168
Rear RS55118	Rear RS7118	Rear RS999118 ³¹⁶

UPGRADE YOUR SHOCKS.

YEAR	MODEL	RAISED HEIGHT	RS5000™MX		RS7000®MT		RS9000™MXL	
			Front	Rear	Front	Rear	Front	Rear
1996-86	Wrangler YJ 4WD	0 - 1.5-in.	RS55168	RS55113	RS7168	RS7113	RS999168	RS999113 ³¹⁶
1996-86	Wrangler YJ 4WD	2.5-in.	RS55168	RS55118	RS7168	RS7118	RS999168	RS999118 ³¹⁶

2.5-IN. LEAF SPRING SYSTEM

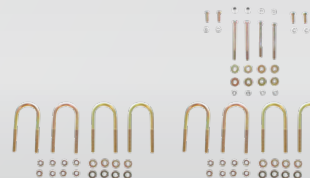
Leaf springs are designed to control torque roll while providing equal traction through limited axle wind-up

Rancho springs progressively rated to control axle wind-up while maintaining a soft factory ride

All Rancho Leaf Springs come complete with urethane bushings and pre-installed Zinc plated sleeves

Springs are carefully shot peened and finished in black

Complete kit requires all four leaf assemblies



YEAR	MODEL	RAISED HEIGHT	FRONT SPRINGS		FRONT KITS	REAR SPRINGS	REAR KITS
			Front	Rear	Front	Rear	Front
86-82	CJ5, CJ7, CJ8 4WD	2.5-in.	RS44092	-	RS712	RS44192	RS711
86-82	CJ5, CJ7, CJ8 4WD	1-in.	-	-	RS712	-	RS711
1981	CJ8 4WD	2.5-in.	RS44092	-	RS712	RS44192	RS711
1981	CJ8 4WD	1-in.	-	-	RS712	-	RS711
81-76	CJ5, CJ7 4WD	2.5-in.	RS44092	-	RS712	RS44192	RS711
81-76	CJ5, CJ7 4WD	1-in.	-	-	RS712	-	RS711
75-72	CJ5, CJ6 2/4WD	2.5-in.	RS44062	-	RS712	RS44162	RS713
71-69	CJ5, CJ6 4WD	2.5-in.	RS44062	-	RS712	RS44162	RS713
63-46	CJ2A, CJ3A, CJ3B 4WD	2.5-in.	RS44020	-	RS714	RS44120	RS711

³¹⁶ Requires Rancho shock adapter bracket. See Master Catalog or website for additional application information. **J.17**

LIFT YOUR RIDE.

ADJUSTABLE CONTROL ARMS

Rancho® has **NEW** front and rear, upper and lower Adjustable Control Arms for your stock or lifted Jeep. The new Arms work on a range from stock to 4-inches and allow caster and pinion angle adjustments. The Arms are made of heavy duty DOM tubing for improved strength to handle off road obstacles. Lower Arms are bent similar to the factory design to allow for larger wheels and tires. The Control Arms forged ends feature Rancho's D2 synthetic high articulation bushings that self-center and are completely grease free. For the ultimate in convenience, a rebuild kit is available and sold separately.

Heavy duty, .188 DOM wall tubing & forged ends construction
D2 high articulation, grease-free, self-centering bushings
1.25-in. OD Diameter bar for upper Arms
2.00-in. OD Diameter bar for lower Arms
Improves ride quality reducing NVH
Works on Jeeps from stock to 4-inches of lift
Allows adjustment for caster and pinion angles
Sold in pairs by axle or as a complete set



PART No. RS66159B

18-07 WRANGLER JK 2/4 DOOR with 0 - 4-in. Lift Height

Also sold individually in pairs:

Front Upper	Front Lower	Rear Upper	Rear Lower
RS66155B	RS66156B	RS66157B	RS66158B

06-97 WRANGLER TJ/LJ/XJ with 0 - 4-in. Lift Height

01-84 CHEROKEE XJ with 0 - 4-in. Lift Height

Sold in pairs by axle:

Front Upper	Front Lower	Rear Upper	Rear Lower
RS66160B	RS66161B	RS66162B	RS66163B

Cherokee XJ is front upper and lower only.

BUSHING KITS / BUSHING INSTALLATION TOOL

Forged end featuring Rancho®'s D2 bushing. Bushing has a firmer inner bearing material and a softer outer material to dampen noise, vibration, and harshness (NVH). The D2 synthetic high articulation bushings self-center and are grease free with a PTFE liner impregnated into the internal bushing that serves as a lubricating agent for silent, maintenance free operation.

PART No. RS881009

18-07 WRANGLER JK 2/4 DOOR

Rancho RS62104, RS62105 and RS62107 Adjustable Track Bars

PART No. RS881013

18-07 WRANGLER JK 2/4 DOOR

Upper Front Adjustable Control Arm RS66155B

PART No. RS881014

18-07 WRANGLER JK 2/4 DOOR

Lower Front & Rear Adjustable Control Arm RS66156B & RS66158B

PART No. RS881015

18-07 WRANGLER JK 2/4 DOOR

Lower Front & Rear Adjustable Control Arm RS66156B & RS66158B - Non Adjustable End

PART No. RS881016

18-07 WRANGLER JK 2/4 DOOR

Upper Rear Adjustable Control Arm RS66157B

PART No. RS881017

01-84 Cherokee XJ & 96-06 WRANGLER TJ

Lower Front & Rear Adjustable Control Arm RS66161B & RS66163B

PART No. RS881018

01-84 Cherokee XJ & 96-06 WRANGLER TJ

Upper Front & Rear Adjustable Control Arm RS66160B & RS66162B

PART No. RS62108

18-07 WRANGLER JK 2/4 DOOR

Installation tool for RS881015 Replacement Bushing

HD FRONT ADJUSTABLE TRACK BAR

Rancho®'s **NEW** HD adjustable Track Bars work on suspension systems from 2- to 6-inches and allow you to center your Jeep® JK's front axle in the proper position. The D2 synthetic, high-articulation bushings in the Track Bar deliver superior dampening plus improved ride and handling characteristics. The D2 bushing has a firmer inner bearing material and a softer outer material to dampen noise, vibration, and harshness (NVH). The D2 bushing is grease free with a liner impregnated into the internal bushing that serves as a lubricating agent for silent, maintenance-free operation.

Heavy-duty, .290 DOM wall tubing and forged ends construction
1.375-in. OD diameter bar
Includes D2 bushings for long life and improved ride experience
Improves ride quality reducing NVH
Centers the axle in the axle position
For Jeeps with 2 - 6-inches of lift

PART No. RS62115

18-07 JEEP JK 2/4 DR. w/ 2 - 6-in. Lift Height
REPLACES RS62104

Wrangler, Wrangler Unlimited, Rubicon and non-Rubicon Models



REAR ADJUSTABLE TRACK BAR

Rancho®'s new adjustable Track Bars work on lift kits from 2- to 6-inches and allow you to center your Jeep JK's rear axle in the proper position. The D2 synthetic, high articulation bushings in the Track Bar deliver superior dampening plus improved ride and handling characteristics. The D2 bushing has a firmer inner bearing material and a softer outer material to dampen noise, vibration, and harshness (NVH). The D2 bushing is grease free with a liner impregnated into the internal bushing that serves as a lubricating agent for silent, maintenance free operation.

Heavy duty, .281 DOM wall tubing & forged ends construction
Includes D2 bushings for long life & improved ride experience
Improves ride quality reducing NVH
Centers the axle in the axle position
1.25-in. OD Diameter Bar

PART No. RS62105

18-07 JEEP JK 2/4 DR. w/ 2 - 6-in. Lift Height

Wrangler, Wrangler Unlimited and Rubicon Models



FRONT ADJUSTABLE TRACK BAR

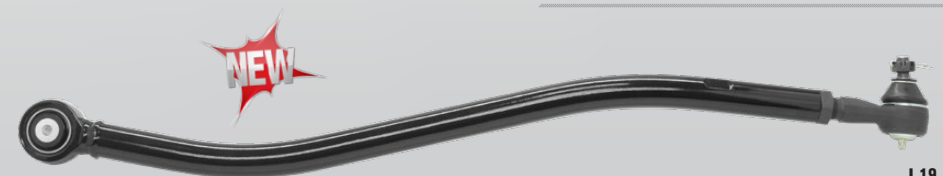
Rancho®'s **NEW** Adjustable Track Bar works on suspension systems from 2- to 5-in. and allow you to center your Jeep TJ/LJ or XJs front axle in the proper position. The D2 synthetic, high articulation bushings in the Track Bar deliver superior dampening plus improved ride and handling characteristics. The D2 bushing has a firmer inner bearing material and a softer outer material to dampen noise, vibration, and harshness (NVH). The D2 bushing is grease free with a PTFE liner impregnated into the internal bushing that serves as a lubricating agent for silent, maintenance free operation.

Works with lifts from 2 - 5-in.
Improves ride quality
Forged ends with high-articulation D2 Bushings
Centers front axle for proper alignment wheel position

PART No. RS62109

06-97 JEEP TJ/LJ w/ 2 - 5-in. Lift Height

01-84 CHEROKEE XJ w/ 2 - 5-in. Lift Height



FRONT DISCONNECT SWAY BAR LINK KIT

Rancho®'s Adjustable Front JK/JKU Quick Disconnect Sway Bar End Links quickly detach at the lower mount to instantly improved off-road performance. Quickly disconnect the lower Sway Bar End Link and swing it up out of the way for unhindered axle articulation while off-roading. Pivot around the OEM inspired ball and socket upper mount to the powder coated sway bar relocation brackets, tucking them safely out of the way.

Precisely adjust the massive 3/4-in. diameter DOM link tube while it's still installed on the vehicle. Forged lower ends feature Rancho's D2 Synthetic high-articulation bushings that are maintenance free. 3/8-in. thick high-strength, low-alloy steel axle mounted relocation brackets reduce any chance of interference with aftermarket track bar brackets. When connected for street use, the link provides immediate reaction during sway bar loading to eliminate excess play. This results in improved lateral control and steering response compared to the stock rubber sway bar link bushings.

Quickly disconnects for improved off-road performance
Easy bolt-on installation
Adjustable for 2 - 6-in. lift heights

Hardware clear Zinc plated for maximum corrosion resistance

Powdercoated links and brackets for lasting performance and good looks

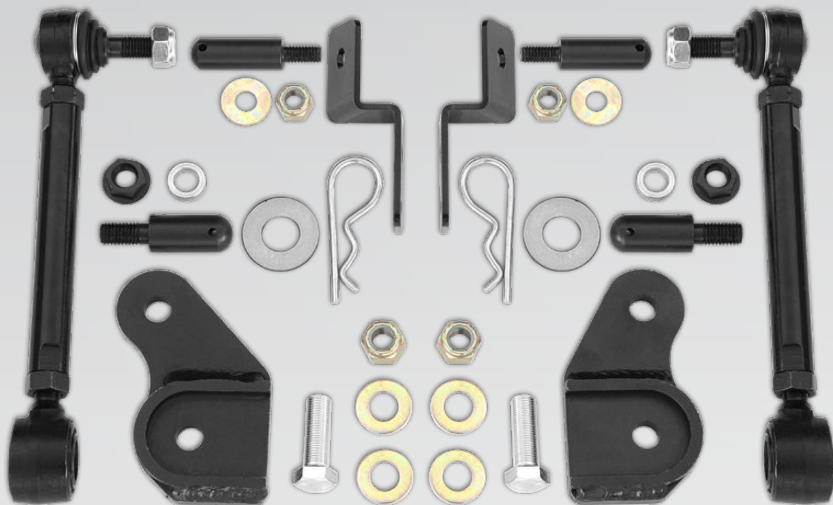
Frame mounted sway bar relocation brackets and all necessary mounting hardware included

Precisely adjust the massive 3/4-in. diameter DOM link tube while it's still installed on the vehicle

Forged lower ends feature Rancho's D2 Synthetic high-articulation bushings that self-center and are completely grease-free 3/8-in. thick high-strength, low-alloy Steel axle mounted relocation brackets reduce any chance of interference with aftermarket track bar brackets

PART No. RS62113B *(Shown below)*
2018-07 JEEP WRANGLER JK 2/4 DOOR

All Models with 2- 6-in. Lift Height



Rancho's Adjustable Front TJ Quick Disconnect Sway Bar End Links quickly detach at the lower mount to instantly improved off-road performance. Quickly disconnect the lower Sway Bar End Link and swing it up out of the way for unhindered axle articulation while off-roading. Pivot around the OEM inspired ball and socket upper mount to the powder coated sway bar relocation brackets, tucking them safely out of the way.

Precisely adjust the massive 3/4-in. diameter DOM link tube while it's still installed on the vehicle. Forged lower ends feature Rancho's D2 Synthetic high-articulation bushings that are maintenance free. Welded 3/8-in. thick high-strength, low-alloy Steel bar adapter included. When connected for street use, the link provides immediate reaction during sway bar loading to eliminate excess play. This results in improved lateral control and steering response compared to the stock rubber sway bar link bushings.

PART No. RS62112B
2006-97 JEEP WRANGLER TJ/LJ

Non-Rubicon Models with 2- 6-in. Lift Height



HIGH-CLEARANCE STEERING KNUCKLES

The Rancho® High-Steer Knuckles maintain steering geometry and add strength to the most vulnerable points within the steering envelope when off-road driving. The knuckles add an additional 1.5-inches of clearance within the tight space, helping to protect critical steering components, and their design also helps lift the steering linkage out of range from direct impact from off-road obstacles or impediments. The High-Steer Knuckles are precisely engineered and heavy-duty for Left Hand and Right Hand Drive, 3-inch and higher lifted Jeep Wrangler JK's. The kit includes: a front left High-Steer Knuckle, a front right High-Steer Knuckle and 3-inch bump stops. This product offers a Limited Lifetime Warranty**. A 3-inch Track Bar Relocation Bracket is required and is sold separately if your lift does not have one (RS62101). A flipped drag link is also required and is sold separately (RS62102, RS62106).

PART No. RS62100

2018-07 JEEP WRANGLER JK 2/4 DOOR with 3 - 4-in. Lift Height

X, Sport, Sahara, Unlimited and Rubicon Models

Fits JK Dana 30, JK Rubicon Dana 44
Adds critical strength and height to off-road JK's
Constructed from high-strength steel
Compatible for left- and right-hand drive models
Aligns the geometry of the track bar & drag link to reduce bump steer
Requires use of 3-in. track bar mount – (sold separately)
Requires use of a flip drag link – (sold separately)
Limited Lifetime Warranty**



TRACK BAR BRACKET

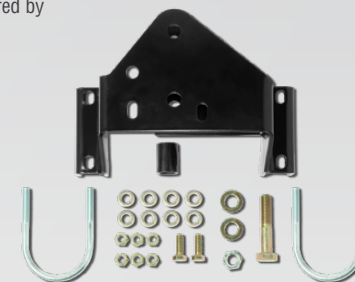
Dramatically improve a lifted Jeep JK's overall handling and reduce body roll through the Rancho Track Bar Relocation Bracket. After lifting a Jeep JK, the vehicle's roll center is raised and this heavy-duty front track bar bracket helps to restore proper suspension geometry and raises the vehicle's axle side track bar mount. Built to the Rancho brand's exacting standards of engineering and materials, the bolt-on bracket helps to strengthen the factory mount for heavy off-road use. The bracket – easily installable with basic hand tools – relocates the factory or aftermarket steering stabilizer to a higher, less-susceptible-to-impact location. The Rancho Track Bar Bracket features a powder-coat finish. All Rancho® RockGEAR™ components are covered by a Limited One Year Warranty**.

Compatible with 3-in. and taller lifts
Heavy-duty Front Track Bar Bracket for the Jeep JK
This bracket raises the vehicle's axle side track bar mount

PART No. RS62101

2018-07 JEEP WRANGLER JK 2/4 DOOR with 3 - 4-in. Lift Height

X, Sport, Sahara, Unlimited and Rubicon Models



FLIP DRAG LINK FOR VEHICLES WITH RANCHO HIGH-CLEARANCE STEERING KNUCKLES

Mounts in the steering knuckle and connects to the adjusting sleeve/inner tie rod at the pitman arm
RS62106 can be used as a O.E. stock replacement drag link on LHD vehicles
Dana 30 or Dana 44 axle
Grease-able
Limited Lifetime Warranty**

PART No. RS62102 (LHD) **RS62106** (RHD)
2018-07 JEEP WRANGLER JK 2/4 DOOR

Wrangler, Wrangler Unlimited and Rubicon Models



GEOMETRY CORRECTION BRACKETS

Rancho® Jeep JK Geometry Correction Brackets deliver perfect fit, finish and performance. These next-level Rancho Jeep JK Geometry Correction Brackets keep the control arms at factory angles to deflect road harshness, reduce brake dive and allow for proper caster angle after the addition of an aftermarket lift kit...maximizing the performance of your Jeep Wrangler JK. This **NEW** bracket fits Jeeps running lift kits from 2- to 4-inches utilizing our unique 4-hole upper control arm locator. Rancho engineering fit and finish delivers a one-piece welded design that will bolt up directly to the factory locations out of the box, saving you time and aggravation.

Works on 2- to 4-inch lift kits that utilize factory upper and lower control arms
 Fixed adjustment location for each height with an option for additional caster if needed
 No assembly required! Out of box and on to your Jeep...an easy DIY project!
 Corrects control arm alignment geometry to factory specs eliminating the need for adjustable control arms or cam bolts for caster correction
 One-piece welded design with a durable, black power-coated finish
 Installs easily - 100-percent bolt-on system and detailed, full-color installation guide included!

PART No. RS62103

2018-07 JEEP WRANGLER JK 2/4 DOOR

Wrangler, Wrangler Unlimited and Rubicon Models with 2 - 4-in. Lift Height



FRONT AXLE BUSHING KIT

Replacement press-in O.E. Bushings for front axle
 Replace in pairs with bolts included
 Restores O.E. ride quality

PART No. RS906

2018-07 JEEP WRANGLER JK 2/4 DOOR



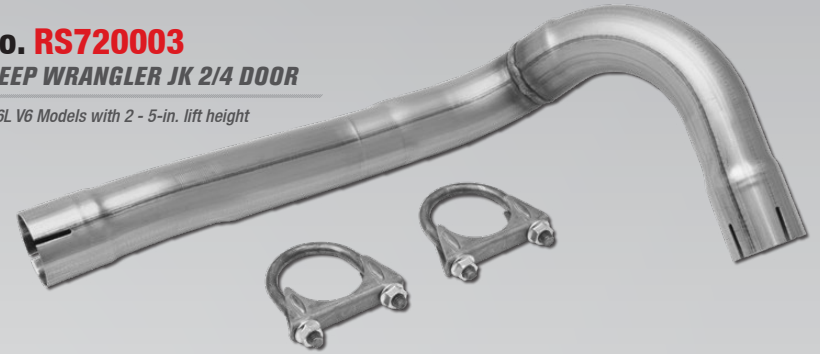
CROSS OVER EXHAUST PIPE KIT

Clearance is optimized for 2 - 5-in. lifted 18-12 Jeep Wranglers, 3.6L V6 engine
 Prevents contact between the exhaust cross over pipe and front drive shaft
 Allows more drive shaft clearance & suspension down travel than exhaust spacers
 Includes all necessary clamps, hardware, and detailed installation instructions
 Mandrel-bent 409 Stainless steel tubing
 Retains equalized OEM down pipe

PART No. RS720003

2018-12 JEEP WRANGLER JK 2/4 DOOR

Required for 3.6L V6 Models with 2 - 5-in. lift height



FRONT COIL SPRING SPACER KIT

3/4-in. Coil Spring Spacer Kit

PART No. RS70082

2018-07 JEEP WRANGLER JK 2/4 DOOR
 2006-97 JEEP WRANGLER TJ/LJ

Available in black finish only. Shocks sold separately.



EXTENDED LENGTH BRAKE LINES

Stainless steel braided Brake Lines are protected with a vinyl cover
 Provides a firmer and more responsive braking
 Mounting brackets included where necessary
 Sold in pairs

PART No. RS6247 OR RS6248

2018-07 JEEP WRANGLER JK 2/4 DOOR

Front RS6247 (24.5-INCH)

Rear RS6248 (22-INCH)

PART No. RS6249

2006-97 JEEP WRANGLER TJ/LJ

2001-84 JEEP CHEROKEE XJ

Front RS6249 (21.5-INCH)





TUBE DOORS

Added visibility for off-road
Retains factory side mirror (passenger and driver side)
1.25-in. tube construction
Mounts to O.E. door hinge
O.E. style latch that can be opened from inside or outside
Durable textured black powder-coated finish
(DOOR SKINS AVAILABLE AT spiderwebshade.com)

2018-07 JEEP WRANGLER JK 2/4 DOOR

Front **RS6216B**
Rear **RS6217B**

Notes: Tube doors are sold in pairs. Rancho recommends checking local and states laws before installation of this product. Such laws may prohibit installation of this product.

Warning: This product is intended for off-road use only. It is not designed as a safety restraint device. Always wear your seat belts, and avoid sharp turns and other abrupt maneuvers.



REAR DOOR COVER PLATE

Protects rear decompression vent
CB antenna mount included
Reuses factory bolts and hole locations
Designed to cover vent when removing spare tire carrier
Thick Steel construction
Black color looks sharp

2018-07 JEEP WRANGLER JK 2/4 DOOR

2018-07 JK
RS6237B



LED REAR BRAKE LIGHT

Works with Rancho bumpers
Compatible with any 2.25-in diameter hole
Works with factory wiring, all necessary wires and connectors are included with kit

**2018-07 JEEP WRANGLER JK 2/4 DOOR
2006-97 JEEP WRANGLER TJ/LJ**

Part No. **RS6238**

REAR SHOCK AND CONTROL ARM SKIDS

Mounts to rear lower control arm and shock bolt
1/4-in. thick, high-strength, low-alloy steel
Prevents damage to suspension components
Durable red powder-coated finish

2018-07 JEEP WRANGLER JK 2/4 DOOR

Rear **RS62135**

COMING SOON



DIFFERENTIAL GLIDE PLATE

Mounts to axle casting
Protects casting from direct contact
Works with O.E. and most aftermarket differential covers
Durable red powder-coated finish
Allows for a smoother glide over obstacles forwards and backwards

2018-07 JEEP WRANGLER JK 2/4 DOOR

DANA 30	DANA 44
Front RS6222	Front RS6212
	Rear RS6242

2006-97 JEEP WRANGLER TJ/LJ

DANA 30	DANA 44
Front RS6227	Front RS6228
	Rear RS6252



OIL PAN PROTECTION

Protects the oil pan from direct contact
1/8-in. Steel construction
Easy installation, installs over O.E. oil pan
Shields the entire oil pan and maintains drain-hole access
Durable red powder-coated finish
NEW mounting tab to keep armor in place

2018-07 JEEP WRANGLER JK 2/4 DOOR

2018-12 JK	2011-07 JK
RS6236	RS6208



CONTROL ARM SKIDS

Mounts to front lower control arms (axle end)
Reduces hang-ups and damage to the factory brackets
Thick 3/16-in. Steel construction
Durable red powder-coated finish
Bolts-on in minutes

2018-07 JEEP WRANGLER JK 2/4 DOOR

Front **RS6210**

2006-97 JEEP WRANGLER TJ/LJ

Front **RS6210**



DIFFERENTIAL COVER

Added axle and internal gear protection
Manufactured from high-strength nodular Iron
Ribbed external construction for added strength
Durable red powder-coated finish
Off-set over-sized fill plug for increased fluid capacity and easier/quicker filling

**2018-07 JEEP WRANGLER JK 2/4 DOOR
2006-97 JEEP WRANGLER TJ/LJ**

DANA 30	DANA 44
Front RS6218	Front RS6209

DANA 60
Factory 10-bolt pattern **RS6245**

*On RHD vehicles, the Steering Stabilizer must be moved from below the tie rod to a high clearance location to use this part. Rancho part number RS64100 High-Clearance Bracket with RS5401 Steering Stabilizer can be used to achieve this.

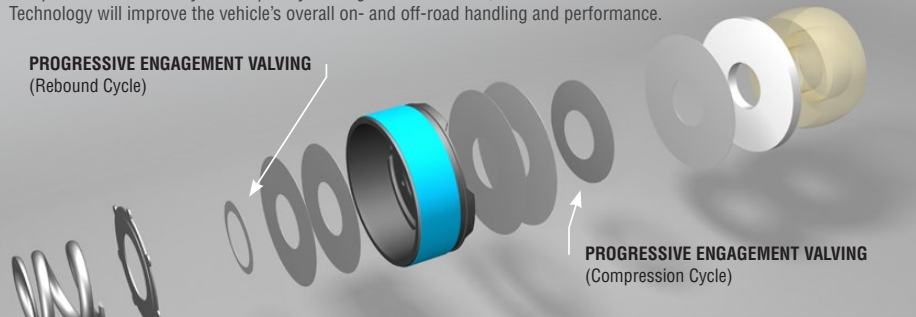


RS5000™ SHOCK ABSORBER

CROSS-TUNED TECHNOLOGY

Inside the new, innovative Rancho® RS5000™ shock is a unique, patented valving system and advanced compression functionality. Developed by the engineers at Rancho, The Rancho RS5000X Cross-Tuned Technology will improve the vehicle's overall on- and off-road handling and performance.

PROGRESSIVE ENGAGEMENT VALVING
(Rebound Cycle)



PROGRESSIVE ENGAGEMENT VALVING
(Compression Cycle)

PROGRESSIVE ENGAGEMENT VALVING:

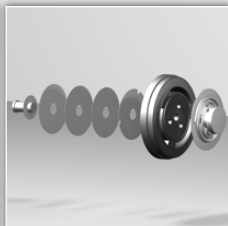
The Rancho RS5000™ Series design includes patented progressive rebound and compression discs. At lower speeds or in the earlier stages of the Shock's travel, an eccentric disc in the valve shim stacks will engage the valving at lower frequencies, helping to control the energy of motion as the cycle of the Shock increases or decreases in its action.

When hitting a pothole, off-road trail obstacle or similar activity, Rancho's Progressive Engagement Valving allows for early flow of fluid, helping to reduce harsh initial impacts and to control the flow of fluid in a progressive, gradual manner through the valving.

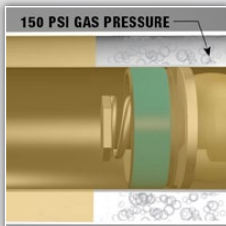
During on- or off-road driving activities like washboard roads or when traveling a rough fire road, the early flow of fluid helps to minimize a "rough" ride as the piston movement is able to glide through the initial travel motion of the Shock with minimal ground impact or force. If needed, the Progressive Engagement Valving will further engage to maintain control and stability.



The RS5000™ series features a 2-1/4-inch diameter shock body. A larger shock body allows for increased fluid capacity to operate cooler and to increase vehicle control and performance at varying speeds and terrains. The RS5000™ series combines a larger shock body with all-weather fluid, allowing the shock to withstand internal temperatures between -40 and 248 degrees Fahrenheit.

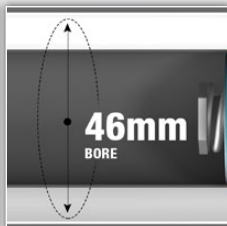


The Tuned Compression Control Valve is a custom-tuned, clamped disc base valve that regulates fluid transfer during the shock's compression cycle to help absorb impacts without disc flutter and to help maintain vehicle control in virtually any environment. The precision-tuned shim stacked valving allows the motion of the shock to work in harmony with the vehicle during on- and off-road driving.



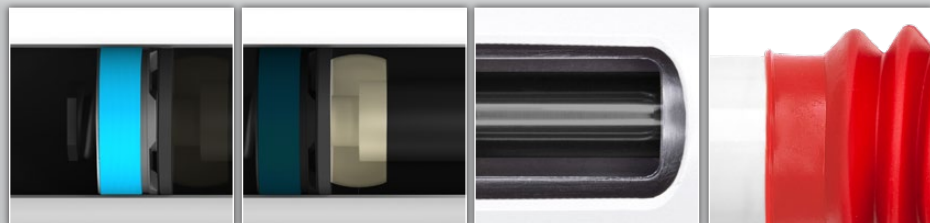
Each RS5000™ shock is gas pressurized to 150 PSI.* The twin tube, gas pressurized shock has a variety of advantages including minimizing air-to-oil mixture that can cause foaming and shock fade. Gas pressurization also provides a mild boost of spring rate to the vehicle.

Rancho RS5000X series struts include 60PSI of gas pressurization.



The RS5000X's 35 mm bore helps to provide heightened control of shock motion due largely to the expanded piston area. Full-displaced compression valving allows the piston to displace more fluid than traditional rod displaced valving.

UPGRADE YOUR SHOCKS.



The sintering process forms objects from powders using atomic diffusion. The powdered material is heated to just below its melting point, fusing all of the particles together to create the piston. This process brings increased structural conformity to each Rancho RS5000™X piston.

The RS5000™X composite piston band provides smoother piston travel and greater responsiveness to changing road conditions. Each glass-filled band offers incredibly smooth operation within the shock absorber cylinder due to Fluon, a slippery glass and plastic material.

Each RS5000™X series shock has a high-strength, polyurethane bumper that helps control the rebound motion during harsh driving conditions. The rebound bumper greatly reduces wear and tear during on- and off-road driving. When your shock rebounds from an obstacle at an excessive rate, the polyurethane bumper dampens the piston rod cycle at its peak point of travel.

Every Rancho RS5000™X shock piston rod is strengthened through a nitro-carburizing process. From increased scuffing resistance to additional protection against corrosion, the process enhances the shock's overall durability. Nitro-carburizing also is more environmentally friendly than the chroming process.

Each Rancho RS5000™X series shock includes a red polyvinyl accordion protection boot, adding protection to the shock rod and oil seal during on- and off-road driving.

GREAT ALL AROUND UPGRADE OR REPLACEMENT SHOCK



The bushings used on the Rancho RS5000™X series shocks provide additional ride harshness absorption and reduce transmitted road noise and suspension vibration to result in a smoother ride and longer life for shocks and related suspension components.



The low-friction, self-lubricating seal included in the RS5000™X shock retains gas and oil to help prolong performance and allow for quicker rebound and smoother compression during the shock cycle. This seals provides an extra layer of defense against dirt and debris.



Rancho engineers place extra emphasis on welded construction at stress areas – like mounting points – of the RS5000™X shock. Each shock includes double-welded loops for added strength and durability.



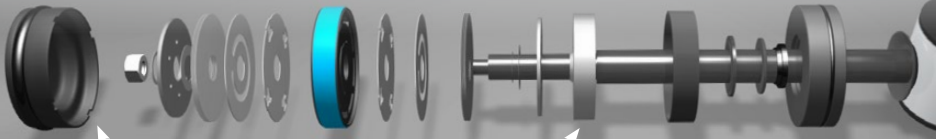
ALSO AVAILABLE AS A PERFORMANCE STRUT





RS7000® MT SHOCK ABSORBER

MONOTUBE DESIGN



FREE-FLOATING DIVIDING PISTON

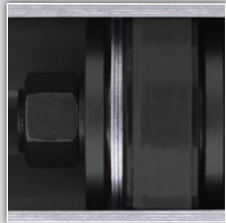
Reduces the possibility of aeration and shock fade

HYDRAULIC LOCKOUT

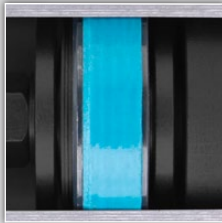
Cushions impact at suspension travel limits

Specifically engineered for high center of gravity light trucks and SUV's to provide the handling, control and performance expected from Rancho® RS7000® MT Shock Absorbers. The Rancho RS7000 MT Monotube Shock Absorbers provide enhanced stability over stock twin tubes by reducing body roll in evasive maneuvers and tight turns. These Shocks feature a high-pressure gas charge that separates the unit's internal oil and Nitrogen to provide additional spring rate. This helps to maximize damping response that dissipates heat for better control.

To further enhance ride control characteristics, Rancho RS7000 MT Monotube Shocks include a hydraulic lockout to cushion the impact as the vehicle suspension is fully extended. The series is covered by a Limited Lifetime Warranty and 90-Day Free-Ride Offer**.



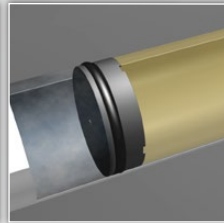
Application specific deflective disc valving instantly senses and automatically responds to any suspension input to deliver precise control, superb ride, and predictable handling characteristics.



Huge 46mm working piston with Fluon band for consistent sealing between the piston and monotube which delivers better control and increased durability compared to conventional piston designs.

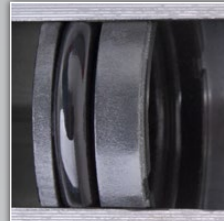


1.97-Inch (50mm) Monotube body provides improved heat dissipation over other twin-tube shocks.

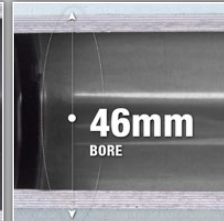


Monotube design with high pressure Nitrogen gas charge allows for quicker damping response time.

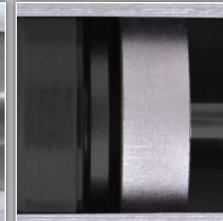
UPGRADE YOUR SHOCKS.



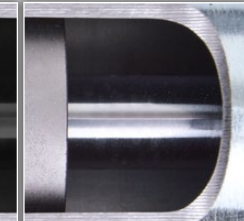
Full-floating dividing piston and high pressure Nitrogen gas maintains constant pressure against the hydraulic oil, eliminating possible aeration and shock fade.



46mm Bore Monotube construction - Ideal for larger light trucks, SUVs and more.



Integral hydraulic lockout cushions piston impact when vehicle suspension is fully extended.



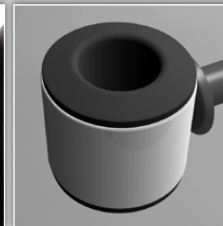
14mm Hardened Steel piston rod for superior strength over standard 11mm rods.



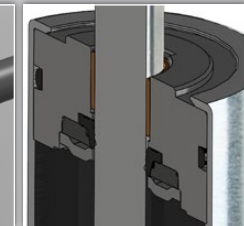
Brushed Zinc plated finish with durable clear coat provides long lasting great looks.



Protective black rubber boot shields piston rod from dirt and debris.



Black natural rubber bushings for enhanced durability and reduced road harshness.



Internally bushed steel rod guide with temperature resistant two piece seal design improves sealing over conventional single seals during extreme side-loads.



ALSO AVAILABLE AS A PERFORMANCE STRUT

HIGH CONTROL SHOCK - REDUCES ROLL AND SWAY





RS9000™XL SHOCK ABSORBER

NINE LEVELS OF PERFORMANCE

2.75-in. (70mm) BODY DIAMETER*
Delivers both performance and appearance

9-POSITION TUNING TECHNOLOGY
Provides 9 different levels of shock performance



Rancho® RS9000™XL 9-position Adjustable Shocks deliver an exclusive nine levels of performance to stock or lifted off-road trucks, SUVs and Jeeps. Globally recognized as the first 9-position manually adjustable Shocks series in the off-road market, this advanced line of Shocks is ideal for off-road use, towing, hauling and more. RS9000XL 9-position Shocks allow the driver to control how soft or firm the ride quality is through the Shock's manual dampening and provide up to 400-percent change in vehicle control and response from setting one to nine.

Plus, the RS9000XL Series Shocks come housed in an extra-large shock body, allowing for cooler and more consistent performance under even the most demanding conditions. Covered by a Limited Lifetime Warranty and 90-Day Free-Ride Offer**.



Rancho RS9000™XL 9-position Adjustable Shocks deliver an exclusive nine levels of performance to stock or lifted off-road trucks, SUVs and Jeeps. Globally recognized as the first 9-position manually adjustable shocks series in the off-road market, this advanced line of shocks is ideal for off-road use, towing, hauling and more. RS9000XL 9-position shocks allow the driver to control how soft or firm the ride quality is through the shock's manual dampening and provide up to 400-percent change in vehicle control and response from setting one to nine. Plus, the RS9000XL series shocks come housed in an extra-large shock body, allowing for cooler and more consistent performance under even the most demanding conditions.

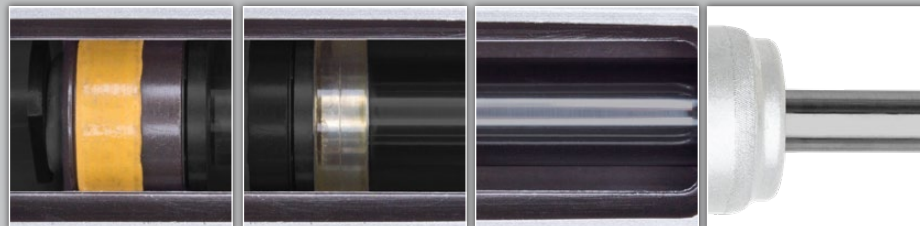
9-Position adjustment knob provides user specific tuning.

2.75-in. (70mm) body diameter* allows more fluid carrying capacity for a cooler running shock.

Tri-Tube, Mono-Flow design ensures exceptional performance.



UPGRADE YOUR SHOCKS.



Graphite filled Fluon banded piston for increased durability.

A high strength Polyurethane bumper that helps control the rebound motion of the Shock in harsh driving conditions.

Tri-Tube, Mono-Flow design ensures exceptional performance.

Heavy-Duty 18mm diameter Nitro-Carburized rod.

Sintered Iron piston for long service life.



Low-Friction self-lubricating seal retains gas and oil.

Double welded loops with Poly-urethane bushings for enhanced performance and durability.

Premium long lasting Liquid Metallic finish.

Nitrogen Gas charged for demanding off-road conditions.

Red boot provides protection for rod and seal.

THE ULTIMATE SHOCK CHOICE FOR VERSATILITY





RS5000™ STEERING STABILIZER

Rancho® RS5000™ Steering Stabilizers are a simple and affordable way to enhance a vehicle's performance. Rancho Steering Stabilizers are ideal for off-road driving, towing and street applications. The Steering Stabilizers reduce wheel shimmy, bump steer and vibration as the Shock Series was engineered for vehicles with oversized tires and wheels. Steering Stabilizers can help reduce on or off-road driver fatigue. Rancho Steering Stabilizers are built from the foundation of the RS5000 Series Shock Absorber – the world's best-selling shock! Covered by a Limited Lifetime Warranty**.



Twin tube cellular gas design with 1 3/8-in piston.

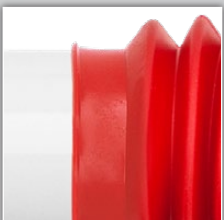


Engineered for vehicles with oversized wheels & tires.



Available in single and dual configurations.

Bracket kits available for vehicles without OE mounts.



Each Rancho RS5000X series shock includes a red Polyvinyl accordion protection boot, adding protection to the shock rod and oil seal during on- and off-road driving.



UPGRADE YOUR SHOCKS.

YEAR	MODEL	DESCRIPTION	PART NUMBER	BRACKET KIT
19-18	Wrangler JL	Single Steering Stabilizer - Bolts to O.E. mounts - no bracket required	RS5420	-
19-18	Wrangler JL	Dual Steering Stabilizer	RS5405 ⁰²	RS64102
18-10	Wrangler JK	Single Steering Stabilizer - Bolts to O.E. mounts - no bracket required	RS5418	-
09-07	Wrangler JK	Single Steering Stabilizer - O.E. mounting location	RS5407	RS5510 ³
18-07	Wrangler JK	HIGH-CLEARANCE STEERING STABILIZER KIT¹	RS5401	RS64100
18-07	Wrangler JK	Dual Steering Stabilizer setup ²	RS5405 ⁰²	RS64101
06-97	Wrangler TJ/LJ	Single Steering Stabilizer - Bolts to O.E. mounts - no bracket required	RS5407	-
06-97	Wrangler TJ/LJ	Optional Steering Stabilizer	RS5401 ⁴	-
01-84	Cherokee XJ	Single Steering Stabilizer - Bolts to O.E. mounts - no bracket required	RS5401	-
96-86	Wrangler YJ	Single Steering Stabilizer - Bolts to O.E. mounts - no bracket required	RS5407	-
86-46	Wrangler CJ	Steering Stabilizer Kit	RS97345	-
86-46	Wrangler CJ	Single Steering Stabilizer	RS5402	RS5508
04-99	Grand Cherokee WJ	Single Steering Stabilizer - Bolts to O.E. mounts - no bracket required	RS5409	-
98-93	Grand Cherokee ZJ	Single Steering Stabilizer - Bolts to O.E. mounts - no bracket required	RS5401	-

YEAR	MODEL	DESCRIPTION	PART NUMBER	BRACKET KIT
07-02	Avalanche 2500 2/4WD	Single Steering Stabilizer - O.E. mounting location	RS5407	RS5548
07-05	Silv./Sierra 1500HD 4WD Crew Cab	Single Steering Stabilizer - O.E. mounting location	RS5407	RS5548
03-01	Silv./Sierra 1500HD 2/4WD Crew Cab	Single Steering Stabilizer - O.E. mounting location	RS5407	RS5548
08-05	Silv./Sierra 1500HD 2WD Crew Cab Classic	Single Steering Stabilizer - O.E. mounting location	RS5407	RS5548
15-11	Silv./Sierra 2500HD 4WD	Single Steering Stabilizer - Bolts to O.E. mounts - no bracket required	RS5417	-
10-01	Silv./Sierra 2500HD 4WD (9200 GVW)	Single Steering Stabilizer - Bolts to O.E. mounts - no bracket required	RS5411	-
08-01	Silv./Sierra 2500HD 2/4WD (9200 GVW)	Single Steering Stabilizer - O.E. mounting location	RS5407	RS5548
04-99	Silv./Sierra 2500 4WD (Up to 8600 GVW)	Single Steering Stabilizer - O.E. mounting location	RS5407	RS5548
02-00	Suburban 2500 4WD (Up to 8600 GVW)	Single Steering Stabilizer - O.E. mounting location	RS5407	RS5548
06-00	Yukon XL 2500 4WD (Up to 8600 GVW)	Single Steering Stabilizer - O.E. mounting location	RS5407	RS5548
08-06	Ram 1500 4WD Mega Cab - Exc. IFS Models	Dual Steering Stabilizers	RS5416 ⁰²	RS64450
01-00	Ram 1500 4WD w/ OEM number 52106909AB, AC & AD	Single Steering Stabilizer - Bolts to O.E. mounts - no bracket required	RS5412	-
19-14	Ram 2500 & 3500	Single Steering Stabilizer - Bolts to O.E. mounts - no bracket required	RS5419	-
12-03	Ram 2500 4WD - Inc. Mega Cab, Power Wagon & Regular/Standard Cab Models	Dual Steering Stabilizers	RS5416 ⁰²	RS64450
12-09	Ram 2500 and 3500 4WD part numbers 52122370AB & 5154661AA	Single Steering Stabilizer - Bolts to O.E. mounts - no bracket required	RS5416	-
08-00	Ram 2500 and 3500 4WD w/ OEM number 52106909AB, AC & AD	Single Steering Stabilizer - Bolts to O.E. mounts - no bracket required	RS5412	-
02-97	Expedition 4WD	Single Steering Stabilizer - O.E. mounting location	RS5401	RS5567
1997	Expedition 2WD	Single Steering Stabilizer - O.E. mounting location	RS5401	RS5567
2004	F150 Heritage Series (Old body style) w/ Rancho RS6488	Single Steering Stabilizer - O.E. mounting location	RS5401	RS5567
19-08	F250 and F350 4WD w/ Rancho Lift Kit	Dual Steering Stabilizers	RS5405 ⁰²	RS64551
15-08	F250 and F350 4WD	Single Steering Stabilizer - Bolts to O.E. mounts - no bracket required	RS5415	-
07-05	F250 and F350 4WD w/ Rancho RS6510 or RS6511	Dual Steering Stabilizers	RS5405 ⁰²	RS64551
13-08	F450 and F550 2/4WD	Single Steering Stabilizer - Bolts to O.E. mounts - no bracket required	RS5415	-
09-03	Hummer H2	Single Steering Stabilizer - O.E. mounting location	RS5407	RS5548

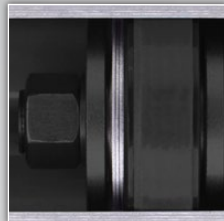
¹The installation of this kit requires at least 2-in. tall front bump stop spacers. This prevents the Steering Stabilizer from hitting the bottom of the frame at full jounce travel. ²Requires a 2-in. minimum lift to use, Stabilizer protective boots cannot be used. ³The installation of this kit requires a 2-in lift minimum with at least 2-in tall front bump stop spacers. This prevents the steering stabilizer from contacting other components at full jounce travel. ⁴Part No. RS5401. Single large cylinder Steering Stabilizer. ⁰²Quantity two required.



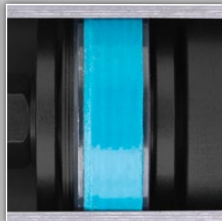
RS7000® MT STEERING STABILIZER

MONOTUBE DESIGN

Rancho® RS7000®MT Monotube Steering Stabilizers enhance a vehicle's performance, and are ideal for off roading, towing and street applications. Utilizing Monotube Technology, Rancho Steering Stabilizers help reduce wheel shimmy, bump steer, and vibration while tightening up steering performance by damping the tie rod to the axle. The Shock was engineered for Jeeps and trucks running oversized tires and wheels. RS7000MT Steering Stabilizers, built from the foundation of the Rancho RS7000MT Series Shock, can help reduce on- and off-road driver fatigue. The series is covered by a Limited Lifetime Warranty**.



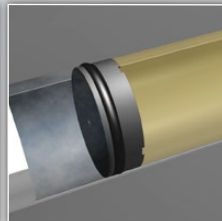
Ten-stage velocity sensitive valving provides tuning specific for each vehicle.



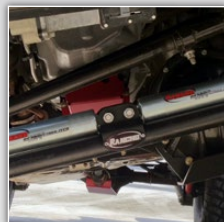
Huge 46mm working piston with Fluon band for consistent sealing between the piston and monotube which delivers better control and increased durability compared to conventional piston designs.



1.97-Inch (50mm) Monotube body provides improved heat dissipation over other twin-tube shocks.

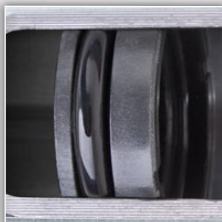


Monotube design with high pressure Nitrogen gas charge allows for quicker damping response time.



Available in single and dual configurations.

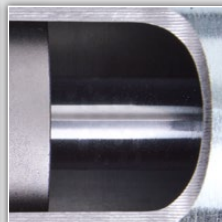
Bracket kits available for vehicles without OE mounts.



Full-floating dividing piston and high pressure Nitrogen gas maintains constant pressure against the hydraulic oil, eliminating possible aeration and shock fade.



46mm Bore Monotube construction - Ideal for larger light trucks, SUVs and more.



14mm Hardened Steel piston rod for superior strength over standard 11mm rods.



UPGRADE YOUR SHOCKS.

YEAR	MODEL	DESCRIPTION	PART NUMBER	BRACKET KIT
19-18	Wrangler JL	Dual Steering Stabilizer	RS7405 ⁰²	RS64102
18-10	Wrangler JK	Single Steering Stabilizer - Bolts to O.E. mounts - no bracket required	RS7418	-
09-07	Wrangler JK	Single Steering Stabilizer - O.E. mounting location	RS7407	RS5510 ⁹
18-07	Wrangler JK	HIGH-CLEARANCE STEERING STABILIZER KIT¹	RS7401	RS64100
18-07	Wrangler JK	Dual Steering Stabilizer setup ²	RS7405 ⁰²	RS64101
06-97	Wrangler TJ/LJ	Single Steering Stabilizer - Bolts to O.E. mounts - Inc. Rubicon & Unlimited	RS7407	-
01-84	Cherokee XJ	Single Steering Stabilizer - Bolts to O.E. mounts - no bracket required	RS7401	-
96-86	Wrangler YJ	Single Steering Stabilizer - Bolts to O.E. mounts - no bracket required	RS7407	-
98-93	Grand Cherokee ZJ	Single Steering Stabilizer - Bolts to O.E. mounts - no bracket required	RS7401	-

YEAR	MODEL	DESCRIPTION	PART NUMBER	BRACKET KIT
07-02	Avalanche 2500 2/4WD	Single Steering Stabilizer - O.E. mounting location	RS7407	RS5548
07-05	Silv./Sierra 1500HD 4WD Crew Cab	Single Steering Stabilizer - O.E. mounting location	RS7407	RS5548
03-01	Silv./Sierra 1500HD 2/4WD Crew Cab	Single Steering Stabilizer - O.E. mounting location	RS7407	RS5548
08-05	Silv./Sierra 1500HD 2WD Crew Cab Classic	Single Steering Stabilizer - O.E. mounting location	RS7407	RS5548
10-01	Silv./Sierra 2500HD 4WD (9200 GVW)	Single Steering Stabilizer - Bolts to O.E. mounts - no bracket required	RS7411	-
08-01	Silv./Sierra 2500HD 2/4WD (9200 GVW)	Single Steering Stabilizer - O.E. mounting location	RS7407	RS5548
04-99	Silv./Sierra 2500 4WD (Up to 8600 GVW)	Single Steering Stabilizer - O.E. mounting location	RS7407	RS5548
02-00	Suburban 2500 4WD (Up to 8600 GVW)	Single Steering Stabilizer - O.E. mounting location	RS7407	RS5548
06-00	Yukon XL 2500 4WD (Up to 8600 GVW)	Single Steering Stabilizer - O.E. mounting location	RS7407	RS5548
08-06	Ram 1500 4WD Mega Cab - Exc. IFS Models	Dual Steering Stabilizers	RS7416 ⁰²	RS64450
01-00	Ram 1500 4WD w/ OEM number 52106909AB, AC & AD	Single Steering Stabilizer - Bolts to O.E. mounts - no bracket required	RS7412	-
12-03	Ram 2500 4WD - Inc. Mega Cab, Power Wagon & Regular/Standard Cab Models	Dual Steering Stabilizers	RS7416 ⁰²	RS64450
12-09	Ram 2500 and 3500 4WD part numbers 52122370AB & 5154661AA	Single Steering Stabilizer - Bolts to O.E. mounts - no bracket required	RS7416	-
08-00	Ram 2500 and 3500 4WD w/ OEM number 52106909AB, AC & AD	Single Steering Stabilizer - Bolts to O.E. mounts - no bracket required	RS7412	-
02-97	Expedition 4WD	Single Steering Stabilizer - O.E. mounting location	RS7401	RS5567
1997	Expedition 2WD	Single Steering Stabilizer - O.E. mounting location	RS7401	RS5567
2004	F150 Heritage Series (Old body style) w/ Rancho RS6488	Single Steering Stabilizer - O.E. mounting location	RS7401	RS5567
19-08	F250 and F350 4WD w/ Rancho Lift Kit	Dual Steering Stabilizers	RS7405 ⁰²	RS64551
15-08	F250 and F350 4WD	Single Steering Stabilizer - Bolts to O.E. mounts - no bracket required	RS7415	-
07-05	F250 and F350 4WD w/ Rancho RS6510 or RS6511	Dual Steering Stabilizers	RS7405 ⁰²	RS64551
13-08	F450 and F550 2/4WD	Single Steering Stabilizer - Bolts to O.E. mounts - no bracket required	RS7415	-
09-03	Hummer H2	Single Steering Stabilizer - O.E. mounting location	RS7407	RS5548

¹The installation of this kit requires at least 2-in. tall front bump stop spacers. This prevents the Steering Stabilizer from hitting the bottom of the frame at full jounce travel. ²Requires a 2-in. minimum lift to use, Stabilizer protective boots cannot be used. ³The installation of this kit requires a 2-in lift minimum with at least 2-in tall front bump stop spacers. This prevents the steering stabilizer from contacting other components at full jounce travel. ⁴Quantity two required.