



n-fab

PRODUCT CATALOG

STEP SYSTEMS | LIGHT MOUNTING SOLUTIONS | BUMPERS | ACCESSORIES



N-FAB is the industry leader in quality nerf steps, pre-runners, and other off-road accessories. We pioneered a nerf step design that is the best looking, strongest, and most durable in the industry today. At N-FAB we are committed to building heavy duty, high quality tubular parts for late-model and vintage trucks dating back to the '80s. While others are using thinner tubes to cut cost, N-FAB still uses a heavy-gauge, .084-wall steel material in our welded, one-piece constructions. N-FAB products are coated with zinc and a thick layer of black powder finish for added protection against the elements. The standards that N-FAB lives and breathes far surpass any of our competition. For products that are unique and designed to last longer, look cleaner, and function better, then N-FAB has what you are looking for!



AN **INDUSTRY**
LEADER



STEP SYSTEMS 6-7

EPYX 8-9

GROWLER 10-11

N-DURA 12-13

NERF 14-15

PODIUM LG 16-17

PODIUM SS 18-19

PREDATOR PRO 20-21

RKR RAILS 22-23

RKR STEP SYSTEM 24-25

LIGHT MOUNTING SOLUTIONS 26-27

LED LIGHT MOUNTS 28-29

LIGHT BARS (TABS AND MULTI-MOUNTS) 30-31

O.R. LIGHT BAR 32-33

PRE-RUNNER 34-35

ROOF MOUNTS 36-37

BUMPERS 38-39

M-RDS FRONT 40-41

RSP FRONT 42-43

REAR (RB-H AND RBS-H) 44-45

ACCESSORIES 46-47

TIRE CARRIERS
(RAPID TIRE STRAP AND BED MOUNTED CARRIER) 48

ROOF RACK 49





EPYX STEP

- | Modern angular design that fits tight to the body for a clean look
- | Installation made easy with new modular brackets, allowing for simple adjustment for a perfect fit
- | Sold as a kit that includes the driver and passenger boards, and all mounting brackets, in one box
- | Drop down step at each door engineered with an expanded step plate for ease of access to stock or lifted vehicles
- | Full steel construction for strength and durability
- | Available in cab length configuration
- | Textured black powder coat finish over an e-coat primer
- | 5-year finish warranty / lifetime workmanship warranty



EXPANDED STEP PLATE FOR EASE OF ACCESS



MODERN ANGULAR DESIGN



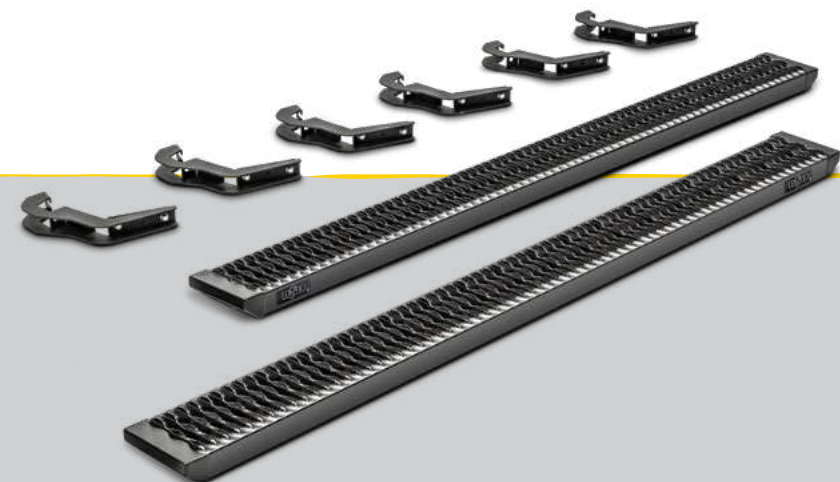
EPYX

ANGULAR DESIGN



GROWLER FLEET STEP

- | Aggressive sure grip tread design allows for traction in any condition
- | 7" wide aluminum board and welded-on aluminum end caps for long lasting durability
- | Press brake laser cut modular steel brackets for strength and adjustability for the perfect fit
- | Sold as a kit that includes the driver and passenger boards, and all mounting brackets, in one box
- | Standard color is a textured black powder coat finish
- | Available in cab length configuration
- | 5-year finish warranty / lifetime workmanship warranty



AGGRESSIVE TREAD DESIGN

7" WIDE ALUMINUM BOARD & END CAPS

GROWLER

TRACTION
IN ANY
CONDITION



N-DURA STEP

- | 3" diameter .084 heavy wall steel main bar allows for a strong and stable mounting
- | All steps and mounting brackets are welded to the main bar for strength
- | Step load is weight-tested at 465 pounds
- | Bed access and wheel to wheel configurations available
- | Standard semi-gloss black powder coating, using N-FAB's 3-stage powder coating process
- | 5-year finish warranty / lifetime workmanship warranty
- | Sold as a pair with passenger and driver side



WELDED TO THE MAIN BAR FOR STRENGTH



WEIGHT-TESTED AT 465 LBS.



STRONG
AND
STABLE

NERF STEP

- | Pioneering design places the main bar tight to the body for a clean, modern look
- | Patented drop down step design and location is engineered to allow for easy access on stock or lifted vehicles
- | Mounting brackets, step pads and hoop steps are fully welded one-piece design for strength and easy installation
- | 3" or 2" heavy gauge wall main tube allows for durability and strong, stable mounting
- | Textured black or gloss black finish, using N-FAB's 3-stage powder coating process
- | Available in 3 configurations, cab length, wheel to wheel, and bed access
- | Sold as a pair with passenger and driver side
- | 5-year finish warranty / lifetime workmanship warranty



Some applications are available with a 2" tube diameter.



GLOSS BLACK



TEXTURED BLACK



HEAVY WALL
STEEL

PODIUM LG

- | 3" main tube fits high and tight to the vehicle body for a clean, modern style
- | Patented N-FAB hoop step design, featuring an all-new expanded and enclosed sure grip step plate, for the ultimate vehicle access experience in any condition
- | Available in a textured black over stainless steel construction for life-long lasting durability
- | One-piece, fully welded design, for strength, durability, and easy installation
- | Sold as a pair with passenger and driver side
- | 5-year finish warranty on powder coated products, lifetime structural warranty on all products
- | Available in cab length and bed access configurations



NEW EXPANDED AND ENCLOSED SURE GRIP STEP PLATE



TEXTURED BLACK POWDER COAT OVER STAINLESS STEEL

PODIUM | LG

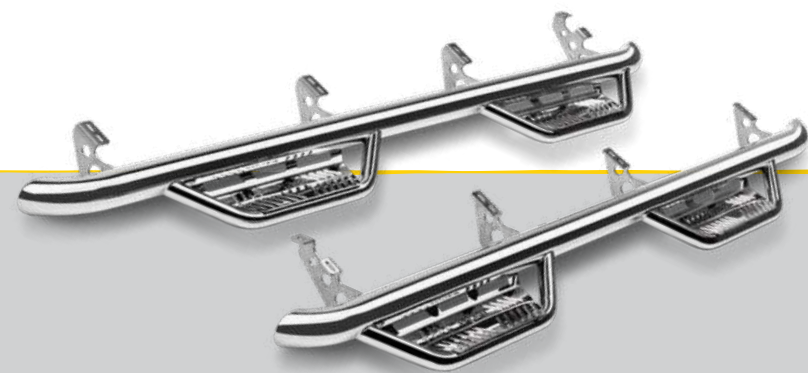
FULL STAINLESS STEEL CONSTRUCTION



STAINLESS STEEL CONSTRUCTION

PODIUM SS

- | Main tube fits high and tight to the vehicle body
- | Stainless steel construction in a high polish finish
- | Fully welded one-piece construction for strength, long lasting durability, and ease of installation
- | Drop down step design and location is engineered to allow for ease of access on stock or lifted vehicles
- | Available in cab length and wheel to wheel with bed access configurations
- | Sold as a pair with passenger and driver side
- | Lifetime finish warranty / lifetime workmanship warranty



FULLY WELDED ONE-PIECE CONSTRUCTION FOR STRENGTH



EASE OF ACCESS

PODIUM | SS

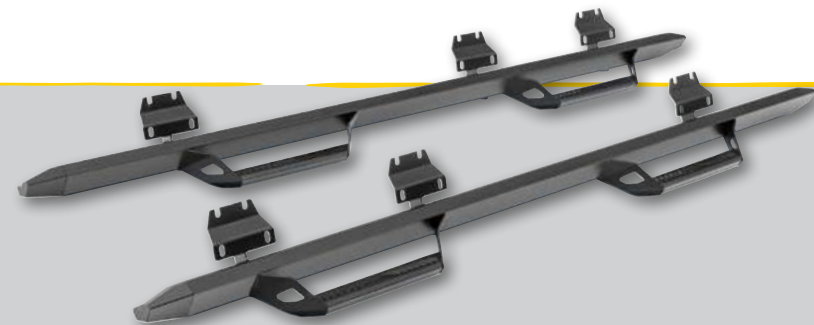
FULL STAINLESS STEEL CONSTRUCTION

ULTIMATE VEHICLE ACCESS



PREDATOR PRO

- | 100% aluminum construction for long-lasting durability and corrosion resistance in the toughest environments
- | The engineered aluminum extrusion main bar with aluminum end caps fit tight to the body, creating the ultimate clean style
- | Patented drop down hoop step with a new, larger step area for ease of access on stock or lifted vehicles
- | Dimpled step pad for secure footing in any condition
- | Fully welded one-piece design for strength and easy installation
- | 5-year finish warranty / lifetime workmanship warranty
- | Sold as a pair with passenger and driver side
- | Available in cab length configuration
- | Standard color is textured black



ALUMINUM END CAPS

NEW LARGER STEP AREA

PREDATOR PRO
ALUMINUM HOOP STEP

100% ALUMINUM CONSTRUCTION

FOR DURABILITY IN ANY ENVIRONMENT



RKR RAILS

- | Direct bolt-on applications, utilizing pre-existing factory mounts
- | Mounting brackets are welded to RKR rails for additional strength and durability
- | Non-modular, dual-bar welded assembly with 1.75" main tube diameter
- | Standard color textured black powder coating, using N-FAB's 3-stage powder coating process
- | 5-year finish warranty / lifetime workmanship warranty
- | Optional detachable step sold separately (detachable step JPTS32 sold in pairs)
- | Sold as a pair with passenger and driver side



OPTIONAL DETACHABLE STEP



DUAL-BAR WELDED ASSEMBLY

PERFECT FOR THE OFF-ROAD
ENTHUSIAST



RKR STEP SYSTEM

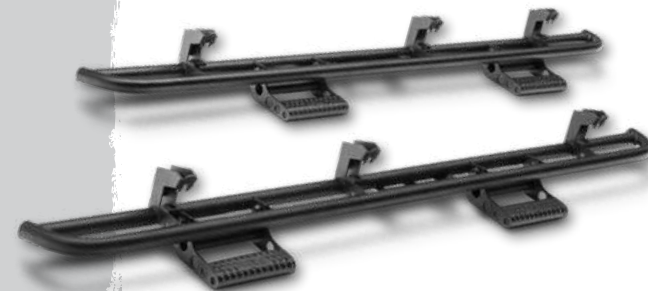
- | N-FAB's patented detachable steps allow for ease of access, as well as clearance and performance protection when removed
- | All mounting components are welded to the RKR Rails for strength, durability and easy installation
- | Non-modular, dual-bar assembly with 1.75" main tube diameter, constructed to fit tightly along the body
- | Standard color is a textured black finish, using N-FAB's 3-stage powder coating process
- | 5-year finish warranty on powder coat and lifetime structural warranty
- | Direct bolt-on applications, utilizing pre-existing factory mount
- | Sold as a kit that includes the driver and passenger boards, and all mounting brackets, in one box
- | Available in cab length configuration



STEPS INCLUDED WITH RKR STEPS SYSTEM



HEAVY-DUTY DIMPLED STEP PLATE



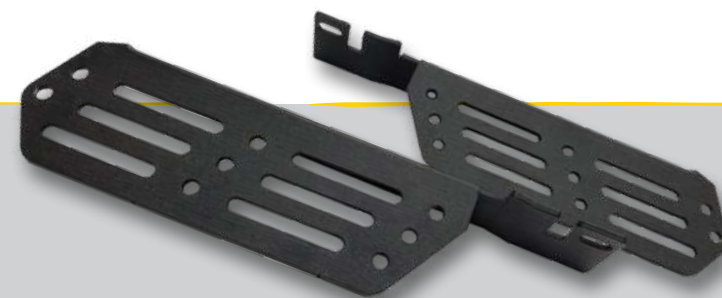
STYLE AND
FUNCTION





LED LIGHT MOUNTS

- | Allows mounting of LED lights into factory openings for a clean, stealthy look
- | Multi-mount system allows for mounting most brands of LED lights
- | Direct bolt-on, no drilling installation
- | Standard color is textured black powder coating, using N-FAB's 3-stage powder coating process
- | 5-year finish warranty on powder coat and lifetime structural warranty



MOUNT LED LIGHTS INTO FACTORY OPENINGS



CLEAN AND STEALTHY
LOOK



LIGHT BAR

WITH TABS AND MULTI-MOUNTS

TABS

- | Standard gloss black or textured black powder coating, using N-FAB's 3-stage powder coating process
- | 5-year finish warranty on powder coat / lifetime structural warranty
- | Clean and easy way to mount up to four 9" lights
- | 1.5" .095 wall tubing for strength and durability
- | Lights not included

MULTI MOUNTS

- | Clean and easy way to mount LED lights in the front of vehicle
- | Full length multi-mount system is compatible with most LED light brands
- | 1.5" .095 wall tubing for strength and durability
- | Allows for multiple configurations of LED light bars and pods
- | Standard gloss black or textured black powder coating, using N-FAB's 3-stage powder coating process
- | 5-year finish warranty on powder coat and lifetime structural warranty



TABS



MULTI-MOUNT



EYE-POPPING UPGRADE



O.R. LIGHT BAR

WITH MULTI-MOUNT

- | Over rider style gives an aggressive look and additional protection for mounted lights
- | Direct bolt-on for easy installation
- | Full length, multi-mount system allows for mounting most brands, and multi configurations
- | All applications mount up to a 30" LED light bar
- | Standard colors are gloss black or textured black finish, using N-FAB's 3-stage powder coating process
- | 5-year finish warranty on powder coat and lifetime structural warranty
- | Lights sold separately



OVER RIDER BAR



AGGRESSIVE LOOK



Sample of patent pending Multi-Mount System for LED, each application will have slightly different design to fit vehicle correctly.

O.R. Light Bar applications will mount up to a 30" LED light bar with multiple combinations possible.

LOW-PROFILE AND
AGGRESSIVE LOOK



PRE-RUNNER

- | Classic pre-runner look
- | Mounts up to three, 9" lights
- | Fully welded design for strength and durability
- | Made out of 1.5" .095 wall tubing
- | Standard gloss black or textured black powder coating, using N-FAB's 3-stage powder coating process
- | 5-year finish warranty on powder coat and lifetime structural warranty



MOUNTS DIRECTLY TO FACTORY BUMPER



OFF-ROAD LIGHTING AND GRILLE PROTECTION



ROOF MOUNTS

- Constructed out of cold-rolled steel for strength and durability
- Available in 40, 49 and 50 Series to fit your vehicle correctly
- Patented design that is vehicle specific, designed to OEM specifications for a perfect fit
- Standard gloss black or textured black powder coating, using N-FAB's 3-stage powder coating process
- 5-year finish warranty on powder coat and lifetime structural warranty



40 SERIES

Fits a straight LED light bar with single side post mount that is from 40 1/2" to 41 3/4"

49 SERIES

Fits a straight LED light bar with single side post mount that is from 49" to 50 3/8"

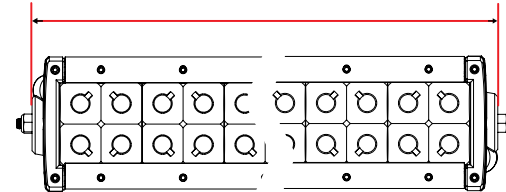
50 SERIES

Fits a straight LED light bar with single side post mount that is from 50 1/2" to 51 3/4"



DURABLE COLD-ROLLED STEEL CONSTRUCTION

Measure length of LED from end of housing to end housing.



Total length of housing 49" - 50 3/8" use 49 Series
 Total length of housing 50 1/2" - 51 3/4" use 50 Series

ROOF TOP LIGHTING





M-RDS FRONT BUMPER

- | Pre-runner radius style for a clean, aggressive look
- | One-piece fully welded design using 1.75" .095 wall tubing
- | Gloss black bumpers include textured black aluminum side plates, and textured black bumpers include gloss black aluminum side plates
- | Silver, powder-coated aluminum skid plate included
- | Multi-mount tab in center opening allows for multiple mounting configurations and brands of LED lights
- | Standard gloss black or textured black powder coating, using N-FAB's 3-stage powder coating process
- | 5-year finish warranty on powder coat and lifetime structural warranty



RADIUS STYLE



LOWER SKID PLATE

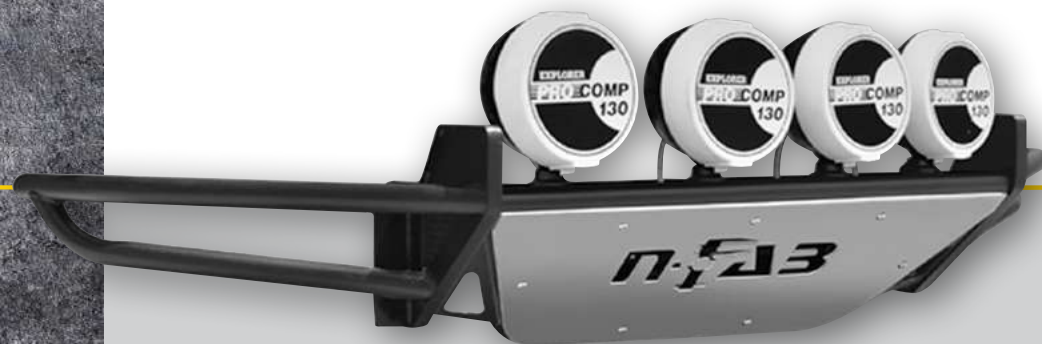


FRONT LINE
DEFENSE



RSP FRONT BUMPER

- | Multi-mount tab in center opening allows for multiple mounting configurations of LED lights or up to two 30" LED light bars
- | Pre-runner style for an aggressive, light weight design
- | Silver, powder-coated aluminum skid plate included
- | One-piece fully welded design using 1.75" .095 wall tubing for durability
- | Standard gloss black or textured black powder coating, using N-FAB's 3-stage powder coating process
- | 5-year finish warranty on powder coat and lifetime structural warranty



ALUMINUM SKID PLATE INCLUDED



CUSTOM FINISH SHOWN

EXTREME OFF-ROAD DEMANDS



REAR BUMPERS

RB-H AND RBS-H

- RB-H**
- Replacement rear bumper
 - Compatible with the factory hitch
 - Bolts directly to the factory bumper mount
 - Constructed with .095 wall tubing
 - Standard gloss black or textured black powder coating, using N-FAB's 3-stage powder coating process
 - 5-year finish warranty on powder coat and lifetime structural warranty

- RBS-H**
- Allows retention of factory hitch
 - Constructed of 1.75" .095 wall tubing for strength and durability
 - Silver, powder-coated aluminum skid plate included
 - License plate mounting location
 - Standard gloss black or textured black powder coating, using N-FAB's 3-stage powder coating process
 - 5-year finish warranty on powder coat and lifetime structural warranty



RB-H



RBS-H



RUGGED PROTECTION



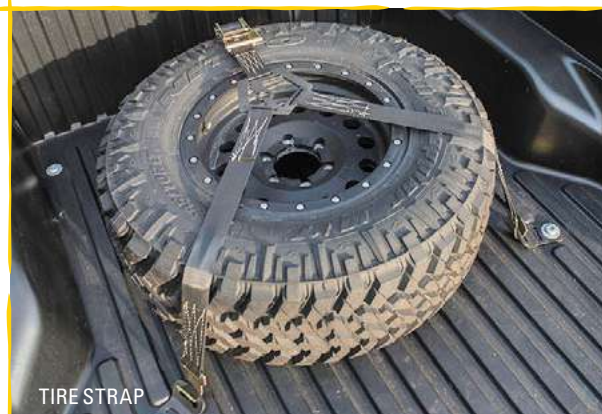


TIRE CARRIERS

BED MOUNTED RAPID TIRE STRAP AND BED MOUNTED TIRE CARRIER

- STRAP**
- | Available with red, blue, or black strap
 - | Easy and quick way to secure a full size spare
 - | Mounts using 3 clips that can be mounted to most surfaces
 - | 5-year finish warranty on powder coat and lifetime structural warranty

- CARRIER**
- | Pre-runner style tire carrier
 - | Strap included
 - | Can be mounted to most surfaces
 - | 5-year finish warranty on powder coat and lifetime structural warranty



TIRE STRAP



TIRE CARRIER



MODULAR ROOF RACK

- | Aluminum lightweight construction with a load rating of 150lbs.
- | Multiple mounting locations for LED lights on the front and rear
- | Center rails designed with anchor points for tie down bungees
- | Aerodynamic design limits wind noise
- | Available in a textured black powder coat finished, using N-FAB's 3-stage powder coating system
- | 5-year finish warranty on powder coat and lifetime structural warranty



LIGHTWEIGHT ALUMINUM CONSTRUCTION

HEAVY-DUTY
LOAD RATING

