



**Part No. 23010     2008-2012 Dodge Challenger Coupe**

# **ABS REAR WINDOW LOUVER INSTALLATION INSTRUCTIONS**

## **CONTENT PARTS LISTING**

<b>Quantity</b>	<b>Components</b>	<b>Part No.</b>
1	Rear Window Louver	23010-01
1	Mounting Hardware Package	23010-02

## **MOUNTING HARDWARE PACKAGE PARTS LISTING**

<b>Quantity</b>	<b>Components</b>	<b>Part No.</b>
1	PN23010 Installation Instructions Manual	23010-03
7	Black-Oxide Stainless Steel Mounting Brackets	30000-03
7	Black Nylon Slotted Nuts	20001-02
7	Black Nylon Washer	20001-03
2	70/30 Isopropyl Alcohol Wipes	20001-04

## **ADDITIONAL ITEMS NEEDED FOR INSTALLATION**

**Masking Tape - Light colored Crayon or Marker - Liquid Automotive  
Soap - Paper Towels and/or Soft Clean Cloth**

## THINGS TO DO or KNOW BEFORE INSTALLING YOUR *Mach-Speed* REAR WINDOW LOUVER (RWL) ON YOUR VEHICLE.

1. Carefully read each step in the following pages of this RWL instruction manual. Improper installation due to failure to follow the instructions could cause personal injury and/or vehicle damage.
2. Make sure all mounting hardware parts are present and accounted for in the hardware package, per the Parts Listing on the cover page of this manual.
3. Always wear some type of eye protection (safety glasses) during installation.
4. Make sure watches, jewelry, belt buckles, etc. are removed or covered to prevent scratching the vehicle surface during the installation procedure.
5. The ambient temperature for installation of the RWL should be in the range to 65 to 90 degrees and install in shaded area. Ideally, install in a clean dust-free garage or building.
6. The rear window glass needs to be cleaned thoroughly with a liquid automotive soap and warm water and dried thoroughly with a soft clean cloth or paper towel before the RWL can be properly installed.
7. BRACKET INSTALLATION TIME: Typically 1 hour.
8. **3M ADHESIVE CURING TIME:** Typically it takes 24 hours for the 3M VHB™ adhesive pads to bond fully to the rear window glass surface. Therefore, it is **IMPORTANT** that the vehicle **NOT** be driven with the RWL installed during this “curing” period.

## PAINTING YOUR REAR WINDOW LOUVER

As an all Acrylic film product, the Korad® film on your RWL provides an excellent surface for paint. In general, the painting of a Korad® coated surface is readily achieved by following standard practices for the painting of non-porous substrates. Since Korad® films are so readily paint-able, the use of a prime coat prior to painting is generally not a requirement for the painting of a properly cleaned Korad® film surface. As with the painting of any non-porous substrate, the surface must be thoroughly cleaned with a mild solution of soap and water prior to the application of any paint. Although Korad® film surfaces will accept a variety of solvent and water-based coatings, the user must certainly make adequate tests of any proposed refinishing system prior to its use over the Korad® film surface. However, it is recommended that you have your RWL painted by a professional body shop.



## **CARE & MAINTENANCE OF YOUR** ***Mach-Speed* REAR WINDOW LOUVER (RWL)**

1. It recommended that you do not use an automatic car wash with the RWL installed on the vehicle. Damage may occur to the RWL and your vehicle.
2. To clean your rear glass (when needed), the RWL can be removed very simply by unscrewing the slotted nylon caps and lifting off the RWL. It is very light, so be careful on windy days.
3. To clean, spray the RWL with water before attempting any cleaning method. It is best to remove any surface dirt and debris with plain water before doing a more thorough cleaning job. Then, use a silicone spray or dressing to clean the RWL's textured plastic surface. This will not only help clean the RWL, but keep the surface protected as well.
4. When waxing your vehicle, do not get wax on the textured surface of your RWL. If at all possible, remove the RWL from the vehicle before waxing.

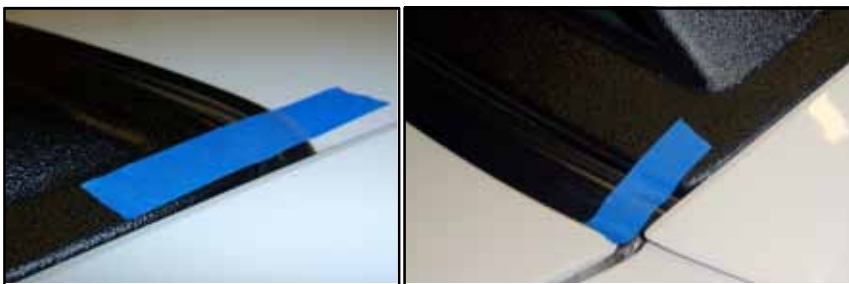
# INSTALLATION INSTRUCTIONS

**Step 1.** Make sure the area around the edge of the rear window where the brackets will be adhered to the glass has been cleaned with the 70/30 Isopropyl alcohol wipe to assure proper adhesion of the 3M adhesive pad.

**Step 2.** Position the Rear Window Louver (RWL) on to the rear window glass. Make sure that the edges of the RWL line up close to the edge of the glass on the top and bottom and the sides of rear window.



**Step 3.** Once you have the RWL in its proper position on the rear glass, you can use masking tape to secure the RWL in position at top and bottom corners.



**Step 4.** Using the crayon or felt-tip marker, make a mark inside the seven (7) holes onto the glass, as shown in the photos below.



**Step 5.** Remove the masking tape and then carefully remove the RWL from the rear window glass and set aside on a clean surface, making sure that your marks on the glass are visible.

**Step 6.** Remove the red pre-mask film from the adhesive pad and place the four (4) black-oxide coated stainless brackets onto the left and right side of the rear glass by aligning the threaded stud **“exactly” over the top of the “mark”** that you made on the glass and carefully bring the bracket down in contact with the glass.



**Step 7.** Then, remove the red pre-mask film from the adhesive pad and place the two (2) black-oxide coated stainless brackets onto the top side of the rear glass by aligning the threaded stud **“exactly” over the top of the “mark”** that you made on the glass and carefully bring the bracket down in contact with the glass.

**Step 8.** And then finally, remove the red pre-mask film from the adhesive pad and place the single (1) black-oxide coated stainless bracket onto the bottom side of the rear glass by aligning the threaded stud **“exactly” over the top of the “mark”** that you made on the glass and carefully bring the bracket down in contact with the glass.

**Step 9.** Once all the brackets have been secured to the rear glass, go back to each bracket and firmly press down on each of them to assure complete contact with the glass.



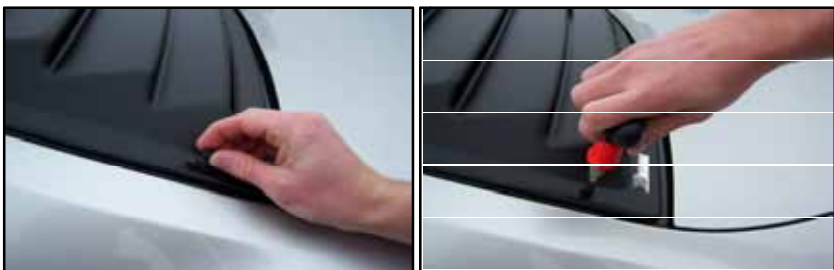
PLEASE NOTE: We use uncoated stainless brackets to make it easier to see them in the installation pictures below.

**Step 10.** *It is **IMPORTANT** that you now allow at least 24 hours to pass before you install the RWL onto the vehicle. This will allow the 3M VHB™ adhesive to fully cure and bond to the glass.*

**Step 11.** Once the adhesive has completed its 24 hour curing period, you can re-install the RWL by carefully place the RWL onto the brackets.



**Step 12.** Secure each bracket with the black nylon slotted nut and washer.



**Step 13.** With all the brackets now secure with a black nylon slotted nut, it is time to enjoy the ride...you have completed the installation.

