



FUEL INJECTION PERFORMANCE KIT

FIPK

GENERATION II

INSTALLATION INSTRUCTIONS

57-2559

FORD

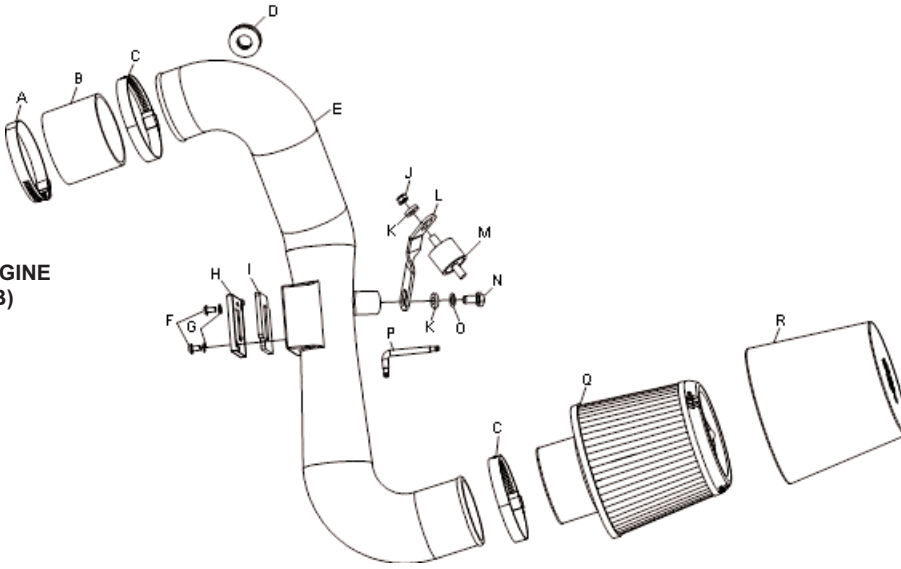
2005 Focus

L4-2.0L, 2.3L

NOTE: EXCLUDING PZEV ENGINE FAMILY 2005 (5FMXV02.01GB)

TOOLS NEEDED:

- Flat Blade Screwdriver
- Ratchet
- Extension
- 7mm Socket
- 8mm Socket
- 10mm Socket
- 13mm Socket
- 2.5mm Allen Wrench
- 4mm Allen Wrench
- Jack
- Jack Stands



PARTS LIST:

Desc.	Qty.	Part #
A hose clamp #44	1	08577
B hose; 3.0" id x 2.5" l	1	08192
C hose clamp #48	2	08601
D grommet; 1-1/8" od x 5/8" id x 5/16" thk	1	08053
E intake tube (DZ)	1	087127
F bolt; 6mm-1.00 x 16mm, b/h/a	2	07730
G washer; 1/4" split lock	2	08198
H adapter #420	1	21515
I gasket	1	09069
J nut; 8mm nylock	1	07542
K washer; 5/16" id x 5/8" od, flat	2	08276
L bracket twist	1	010063
M stud, rubber mntd, m/m,	1	070227
N bolt; 8mm-1.25 x 16mm	1	07844
O washer; 8mm wave	1	08239
P wrench; torx t20	1	69801
Q air filter	1	RX-4990
R dry charger wrap; black	1	RX-4990DK

NOTE: FAILURE TO FOLLOW INSTALLATION INSTRUCTIONS AND NOT USING THE PROVIDED HARDWARE MAY DAMAGE THE INTAKE TUBE, THROTTLE BODY AND ENGINE.

TO START:

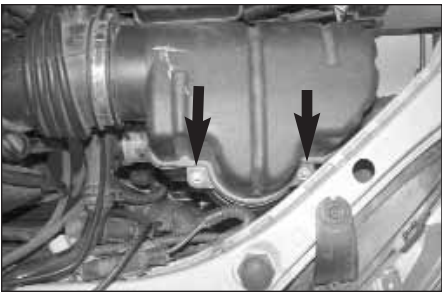
1. Turn the ignition OFF and disconnect the vehicle's negative battery cable.



2. Depress the green locking tab on the crank case vent hose and then pull the vent hose to disconnect from the fitting as shown.



3. Loosen the hose clamp, which secures the factory intake tube to the throttle body.



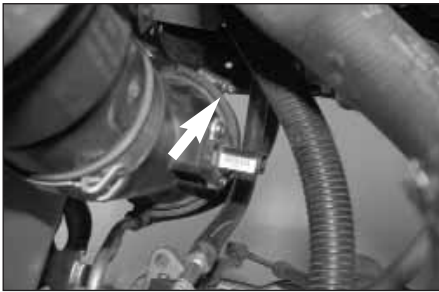
4. Loosen the two bolts, which secure the upper intake housing to the mass air sensor housing. **NOTE: The two bolts do not separate from the upper intake housing.**



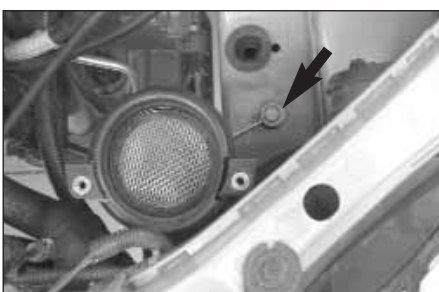
5. Lift firmly to separate the upper intake housing from the mass air sensor housing and then remove the upper intake housing from the vehicle.



6. Depress the locking tab on the mass air sensor electrical connection and then disconnect the electrical connection.



7. Loosen the hose clamp, which secures the mass air sensor housing to the lower intake housing.



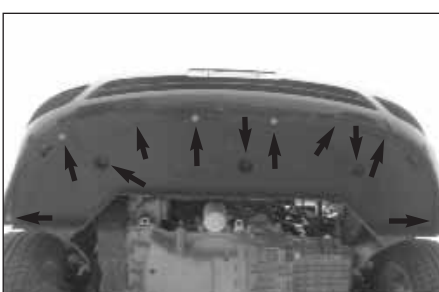
8. Remove the bolt, which secures the mass air sensor housing bracket to the inner fender.



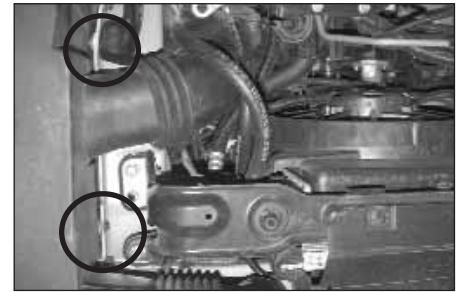
9. Pull firmly up and remove the mass air sensor assembly from the vehicle.



10. After jacking up the car and placing on suitable jack stands and chocking the rear wheels, remove the two bolts which secure the air box on equipped vehicle's or the one bolt on splash shield equipped vehicle's to the inner fender well.



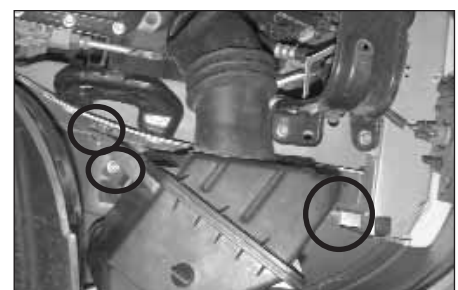
10a. On vehicle's equipped with the splash shield, remove the six bolts and five plastic screws which secure the splash shield to the bumper cover, then remove the splash shield from the vehicle.



11. On vehicle's equipped with an air box cover, remove the two bolts which secure the cover to the frame rail, and the bolt which secures the intake snorkel to the radiator core support.



12. On vehicles equipped with an air box cover, lower the cover and remove it from the vehicle.



13. Remove the three bolts which secure the lower air box to the inner fender well.



14. Lower and remove the air box assembly from the vehicle.

NOTE: On vehicles equipped with the intake snorkel on top of the air box behind the fender, it will be necessary to separate the snorkel from the air box during air box removal.



14a. On vehicle's equipped with the upper intake snorkel, pull down on the snorkel to dislodge it from the mount and then remove it from behind the fender.



15. Install the silicone hose (08192) onto the throttle body and secure with the provided hose clamp.



16. Remove the crank case vent fitting from the factory intake tube as shown.



17. Install the provided grommet into the K&N intake tube as shown.



18. Install the crank case vent fitting removed in step #16 into the grommet installed into the K&N intake tube in step #17 as shown.



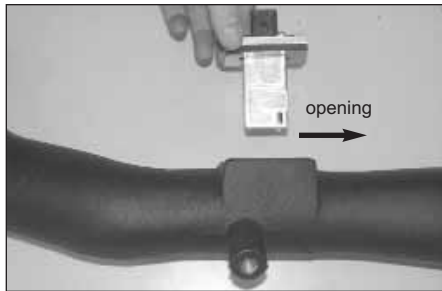
19. Remove the mass air sensor from the factory mass air sensor housing using the Torx wrench provided.



20. Apply the provided gasket onto the K&N mass air adapter as shown.



21. Using the factory mass air bolts, install the mass air sensor into the K&N mass air adapter as shown.



22. Install the mass air sensor assembly into the K&N intake tube.
NOTE: Make sure the open end of the mass air sensor is towards the filter end of the tube.



23. Secure the mass air sensor assembly into the K&N intake with the provided hardware as shown.



24. Install the provided bracket (010063) onto the K&N intake tube with the provided hardware as shown.



25. Install the rubber mounted stud into the threaded hole in the frame rail as shown.



26. Install the K&N intake tube assembly into the silicone hose at the throttle body and onto the rubber mounted stud, then secure with the provided hardware.
NOTE: Do not completely tighten at this time.



27. Reconnect the crank case vent hose to the fitting installed into the K&N intake tube in step #16.



28. Install the provided Dry Charger onto the air filter as shown.



29. Install the air filter onto the K&N intake tube and secure with the provide hose clamp.



30. On vehicle's that were equipped with an air box cover, reinstall and secure with the bolts that were removed in step #11.



30a. On vehicle's that were equipped with the splash shield, reinstall with the bolts removed in step #10.



31. Reconnect the mass air sensor electrical connection.



32. Reconnect the vehicle's negative battery cable. Double check to make sure everything is tight and properly positioned before starting the vehicle.

33. The C.A.R.B. exemption sticker, (attached), must be visible under the hood so that an emissions inspector can see it when the vehicle is required to be tested for emissions. California requires testing every two years, other states may vary.

34. It will be necessary for all FIPK's to be checked periodically for realignment, clearance and tightening of all connections. Failure to follow the above instructions or proper maintenance may void warranty.

ROAD TESTING:

1. Start the engine with the transmission in neutral or park, and the parking brake engaged. Listen for air leaks or odd noises. For air leaks secure hoses and connections. For odd noises, find cause and repair before proceeding. This kit will function identically to the factory system except for being louder and much more responsive.

2. Test drive the vehicle. Listen for odd noises or rattles and fix as necessary.

3. If road test is fine, you can now enjoy the added power and performance from your kit.

4. K&N suggests checking the Air filter element periodically for excessive dirt build-up. When the element becomes covered in dirt (or once a year), service it according to the instructions on the Recharger service kit, part number 99-5050 or 99-5000.