

# HUSKY LINERS®

## weatherBEATER

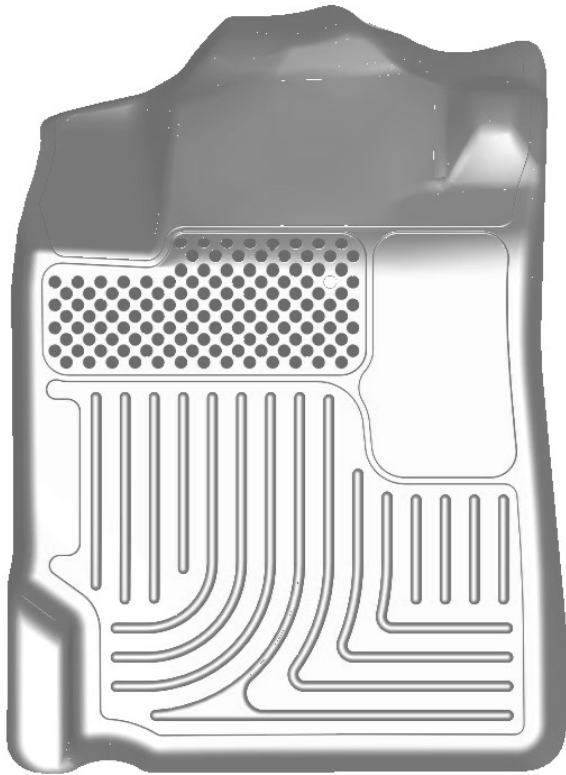
### CARE AND USE INSTRUCTIONS

---

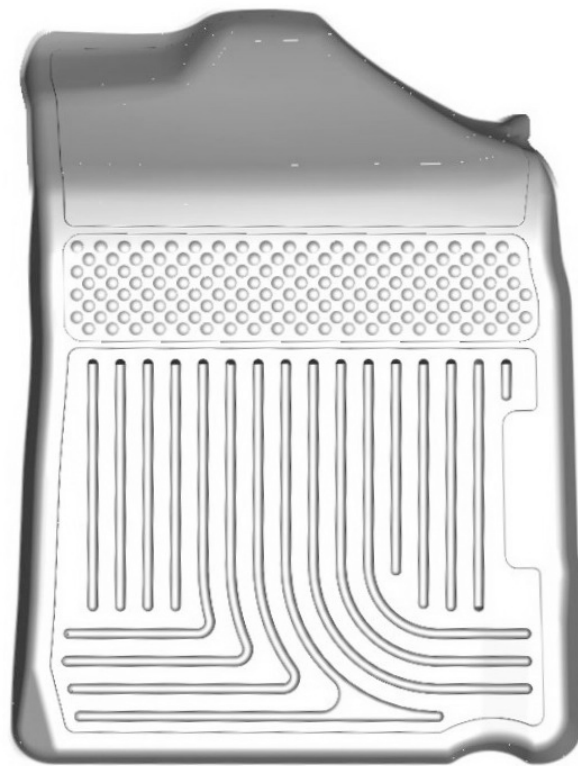
Thank you for selecting a WeatherBeater® Floor Liner from Winfield Consumer Products. Your new front floor liners are custom molded to fit your Toyota Camry. The liners are made to take the place of your factory floor mats. **For correct fit, it is necessary to remove the factory floor mats before installing your new floor liners.** However, do not remove the factory-installed carpeting.

Your liners are made from an engineering resin that is lightweight and extremely tough and durable. The easiest way to clean your liners is with a damp cloth or sponge. If using a cleaner, 409® or Glass Plus® work well. Use of Armor All®, Son-of-a-Gun® or similar items is discouraged as these products make the liners slick.

### INSTALLATION INSTRUCTIONS FOR YOUR TOYOTA CAMRY FRONT WeatherBeater® FLOOR LINERS



LEFT OR DRIVER'S SIDE



RIGHT OR PASSENGER'S SIDE

TO EASE INSTALLATION OF YOUR CAMRY FRONT LINERS, MOVE THE FRONT SEATS TO THEIR MOST REARWARD POSITION. WITH THIS DONE, THE FACTORY CARPET HOOK LOCATED IN THE CARPET OF THE DRIVER'S SIDE FLOOR CAN BE EASILY REMOVED. REMOVING THE HOOKS WILL ALLOW YOUR LINER TO LAY COMPLETELY FLAT. TO REMOVE THE HOOKS, APPLY FIRM AND EVEN PRESSURE WHILE LIFTING THE END OF THE HOOK ARM STRAIGHT UP. ONCE THE HOOKS ARE REMOVED, INSTALL THE LINERS AND REPOSITION SEATS AS DESIRED. TO ACCESS THE FUEL DOOR RELEASE LEVER IN YOUR VEHICLE, YOU CAN SIMPLY LIFT UP THE LINER OR YOU CAN TRIM AWAY THE MATERIAL LOCATED DIRECTLY ABOVE THE RELEASE. THE AREA TO BE REMOVED IS LOWERED TO GUIDE TRIMMING.

# HUSKY LINERS®

## weatherBEATER

### CARE AND USE INSTRUCTIONS

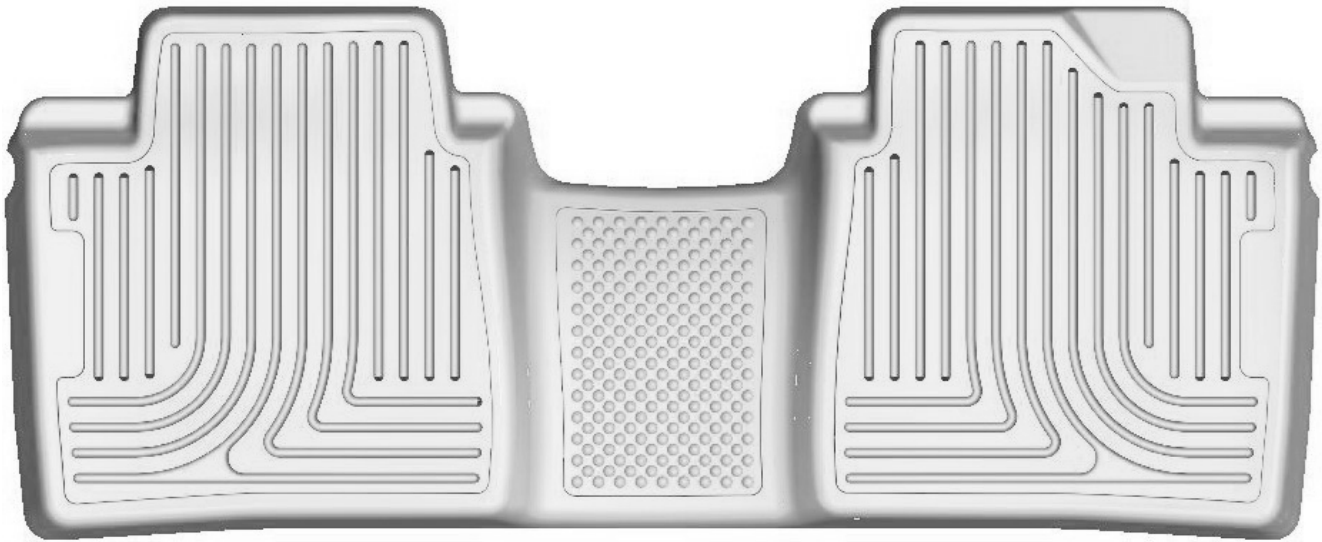
---

Thank you for selecting a WeatherBeater® Floor Liner from Winfield Consumer Products. Your new rear floor liner is custom molded to fit your Toyota Camry. The liner is made to take the place of your factory floor mats. **For correct fit, it is necessary to remove the factory floor mats before installing your new floor liners.** However, do not remove the factory-installed carpeting.

Your liner is made from an engineering resin that is lightweight and extremely tough and durable. The easiest way to clean your liner is with a damp cloth or sponge. If using a cleaner, 409® or Glass Plus® work well. Use of Armor All®, Son-of-a-Gun® or similar items is discouraged as these products make the liner slick.

### INSTALLATION INSTRUCTIONS FOR YOUR TOYOTA CAMRY REAR SEAT WeatherBeater® FLOOR LINERS

FRONT OF VEHICLE



TO EASE INSTALLATION OF YOUR CAMRY SECOND SEAT LINER, MOVE THE FRONT SEATS TO THEIR MOST FORWARD POSITIONS. WITH THIS DONE, INSERT LINER IN VEHICLE ANGLING IT SO THAT THE BACK EDGE OF THE LINER IS SEATED INTO PLACE FIRST, THEN LOWER FRONT PORTION. ONCE LINER IS INSTALLED, REPOSITION THE FRONT SEATS AS DESIRED.