



LIGHTNING SERIES SPORT BAR
ASSEMBLY & INSTALLATION INSTRUCTIONS
PART NO. 555000 2005-13 TOYOTA TACOMA

Do not attempt to install this product on any vehicle other than the one it is designed for and listed above!

Parts list

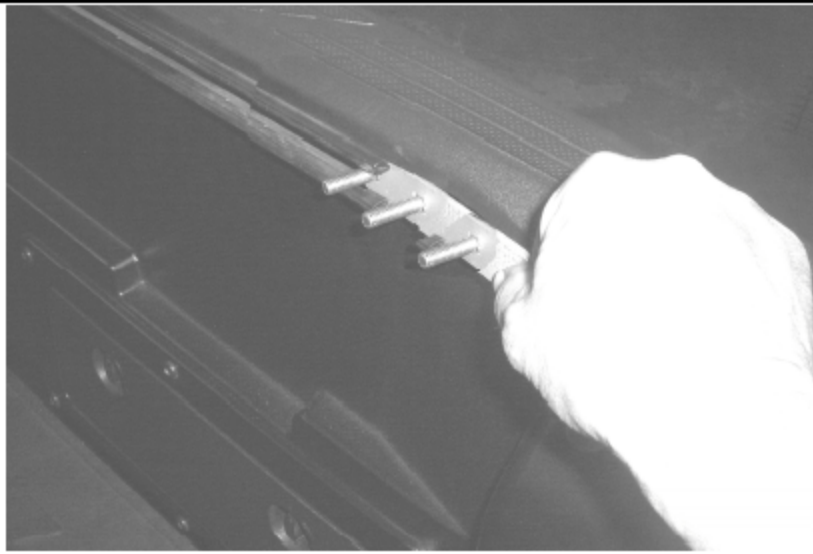
PART NO.	Qty	DESCRIPTION	PART NO.	Qty	DESCRIPTION
	8	3/8" x 1" HEX BOLTS		6	5/16" LOCK WASHERS
	8	3/8" FLAT WASHERS		6	5/16" HEX NUTS
	8	3/8" LOCK WASHERS	517340S	1	17 3/4" UPRIGHT
152050	2	BOLT PLATES	517341S	1	17 3/4" UPRIGHT
	6	5/16" x 1 1/4" CAR BOLTS	201400	4	TUBULAR CORNERS
	6	5/16" FLAT WASHERS	323600	1	36" CROSS BAR

Assembly and Installation

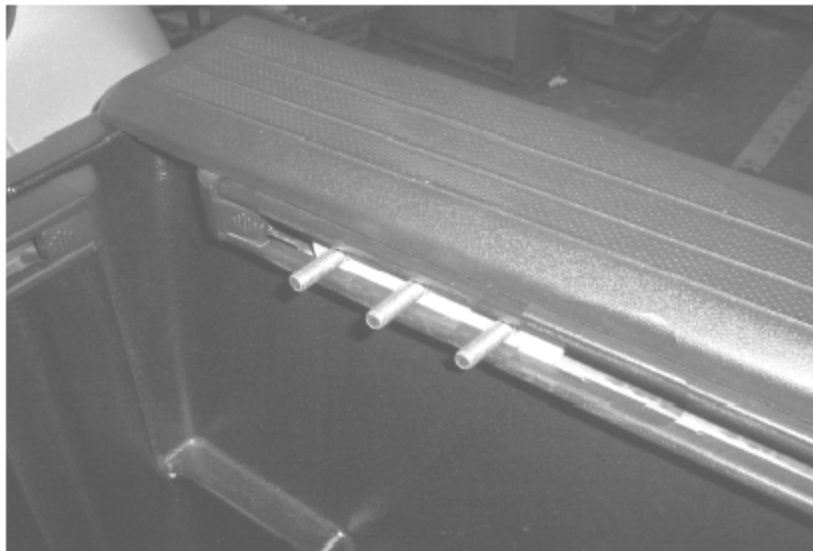
Step 1. Locate and remove the rail track plastic end plugs and tie downs.



Step 2. Loosen the torx screws securing rail tracks to the side of the bed.

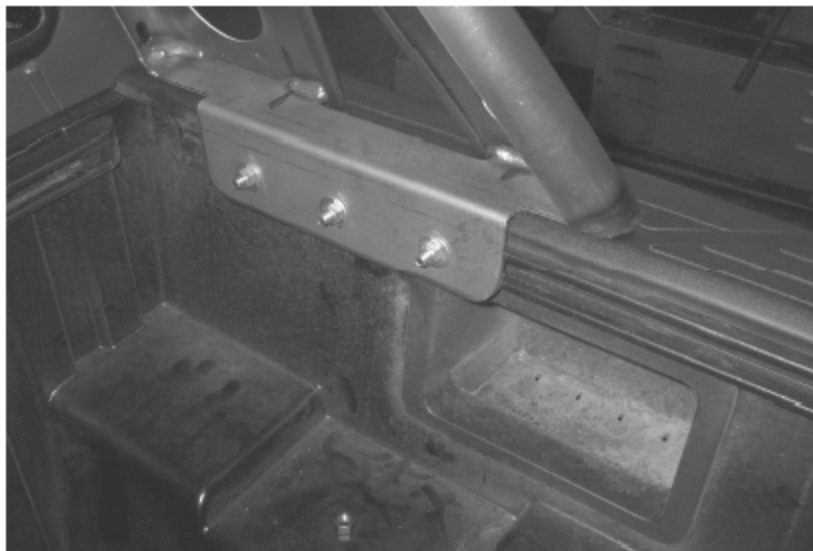


Step 3. Slide the bolt plates into rail tracks and position them toward the front of the bed.



Step 4. Secure the rail tracks and reinstall the tie downs and rail end plugs

Step 5. Loosely attach the uprights to the bolt plates using the 5/16" flat washers, lock washers and hex nuts.





Step 6. Attach the corner tubes and crossbar to the uprights using the 3/8" x 1" hex bolts and washers.



Step 7. Secure the sport rack assembly nuts and bolts.