

INSTALLATION GUIDE

Tacoma Front Bumper (2016+)





Included Hardware:

- (4) 1/2" x 4" bolts
- (6) 1/2" nuts
- (6) 1/2" washers
- (2) 1/2" x 1 1/4" bolts
- (1) 1/4" x 3/4" bolts
- (1) 1/4" washer/locking nut
- (2) 3 Bolt Bracket

Tools:

- 3/4" wrench and socket
- Dremel (recommended)

Skill Level:

4/5 stars (Professional install recommended)

Pre-Installation Preparations

It is recommended to mount your aux lights and winch prior to mounting the front bumper. This ensures proper fitting and alignment of lights and winch/wiring.



Remove Front Grill

Unscrew and pull off the plastic pieces that hold the front grill in place and remove front grill.



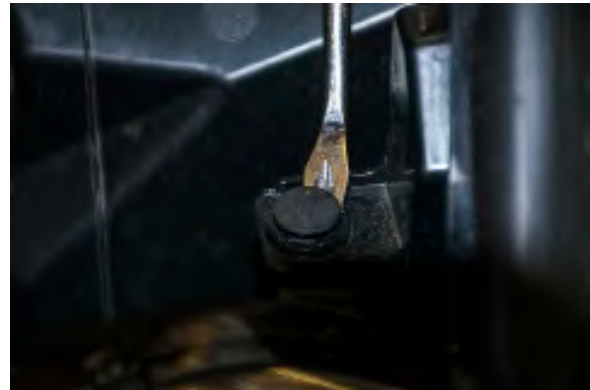
Remove Front Bumper

Unscrew bolts underneath the front bumper.



Remove Front Bumper (Continued)

Remove additional plastic pins and bolts around frame of front bumper and pull off the frame.



Remove Front Bumper (Continued)

Once front bumper comes off, disconnect wiring from stock bumper aux lights.



Cut Plastic around Bumper Frame

Cut plastic frame covering at a 45 degree angle as shown.



Headlight Plastic Removal

Cut protruding plastic piece off from the bottom of the headlights.



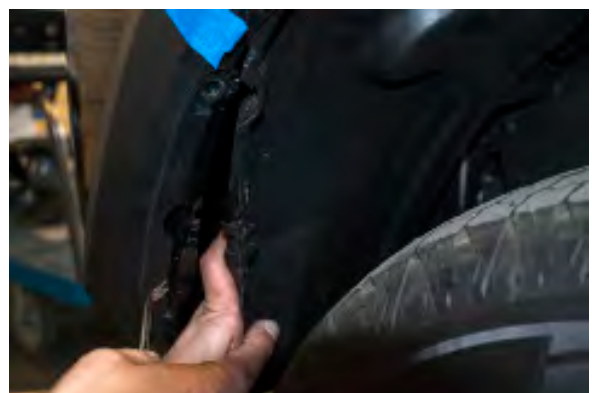
Internal Support Frame

Place internal frame on with interior bolts only as shown.



Inner Fender

Unpin and remove the bottom half of the plastic fender wall along with the inner plastic plugs from internal frame.



Inner Fender (Continued)

Remove fender plastic plugs from inner frame.



Fender Flare Trim

Place tape along the fender making sure it aligns with the fender line. Trim the fender flares to be cut even with the line of where the fender and the bumper meet. Also, remove factory bumper retainer from fender area as well.

****NOTE**** You are not cutting the fender body, just the fender flares



Frame Support

Attach the bolt piece as shown to support frame on each side. This will be tightened when bumper is placed into position for alignment.



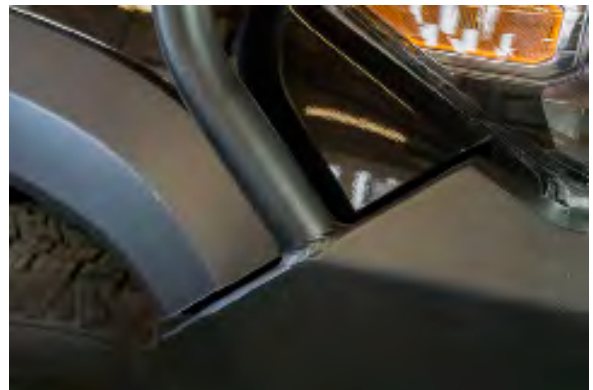
Bumper Fitting & Alignment

Place the bumper onto the frame and check for centering and alignment.



Bumper Fitting & Alignment (Continued)

Adjust bumper so that it aligns to both fenders as shown with about 1/4" to 1/2" of room for fender to flex from the body.



Bumper Finishing Touches

When satisfied with alignment, tighten the 6 frame nuts on each end to secure it in place.



Front Grille Trimming

Apply tape as shown to bottom edge of bumper and with a marker, measure one inch from the bottom and angle the sides as pictured. Cut the marked trim off from grille and place back onto vehicle.

