

INSTALLATION GUIDE

Mule Ultra Rack



Included Hardware:

- (64) 1/4" Button Head Bolts
 - (64) 1/4" Nuts
- (38) 5/16" Button Head Bolts
 - (38) 5/16" Nuts
 - (6) Load Bars
 - (12) End Caps
 - (6) Sleeves
- (6) 5/16" Button Head Long
 - (6) 5/16" Nuts
 - (8) Riv Nuts
- (8) Rectangle Spacers
- (8) Round Spacers
- (8) 5/16" Bolts
- (8) 5/16" Washers
- (8) 5/16" Clip Nuts

Tools:

- 1/2" Open Box Wrench
- 3/16" Open Box Wrench
- 5/32" Allen Wrench
- 3/16" Allen Wrench

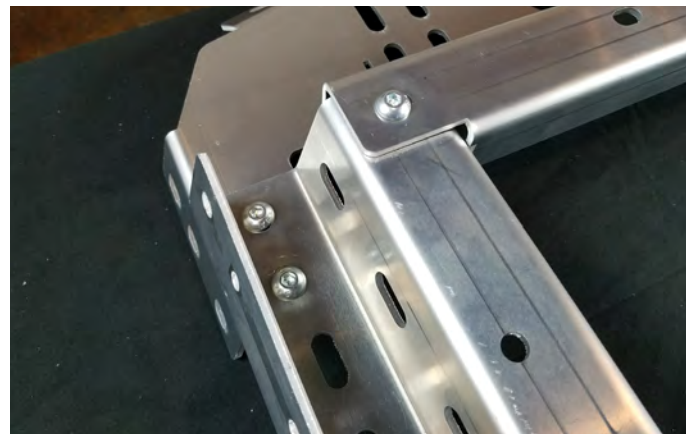
Skill Level:

3/5 stars (Some drilling required)

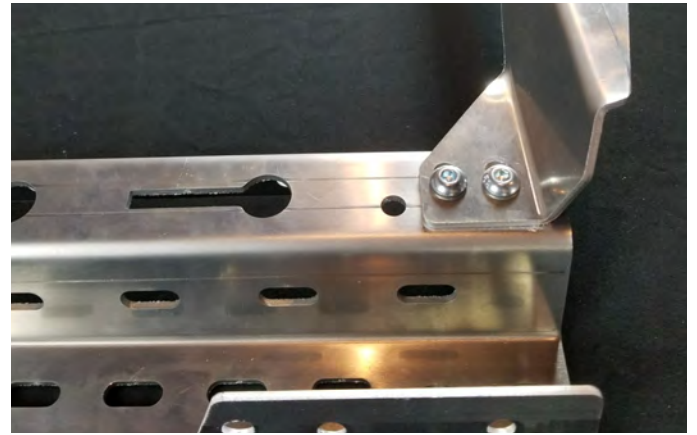
ATTENTION: When assembling the Mule Ultra Rack, remember to hand-tighten all bolts relatively loose until the very end of the install. This allows everything to fit into place before everything is tightened down.

Rack Assembly Installation:

Lay out front and side support braces as shown with provided 5/16" bolts and nuts. (see photo below)

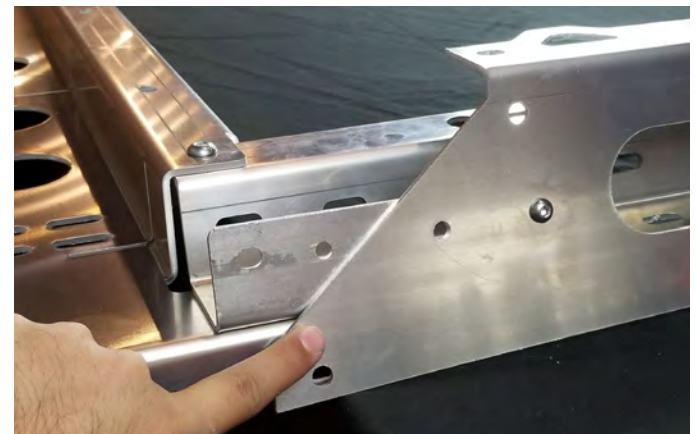


Attach rear reinforcement brace as shown with 5/16" bolts. Repeat on both sides and keep bolts loose.

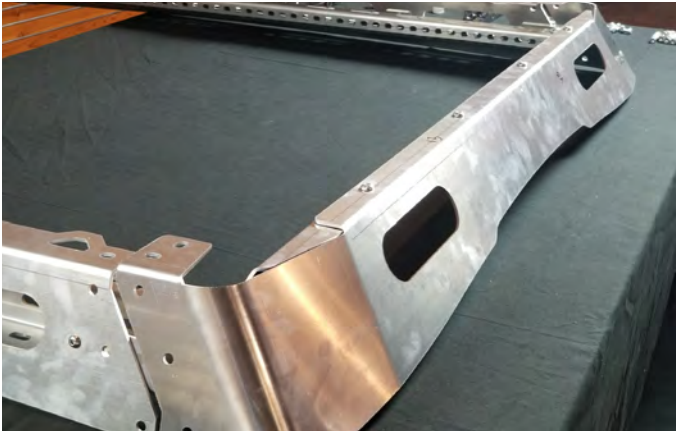


Lay out side fascia pieces and attach with 1/4" bolts (remember to hand tighten but keep loose).

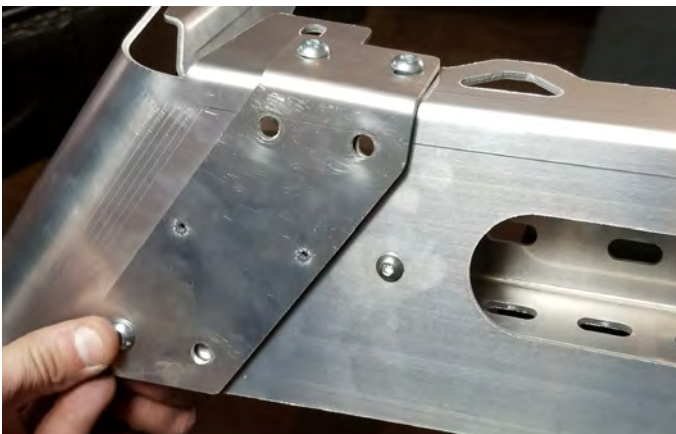
Shallow angle faces towards front end of roof rack as shown in bottom right photo!



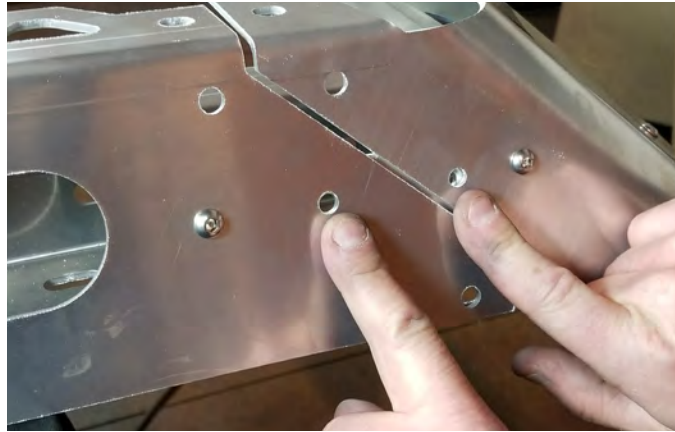
Attach rear fascia as shown with 5/16" bolts and nuts.



Next attach rear corner connectors with 5/16" bolts shown in photo below. (remember to hand tighten but keep fairly loose!)

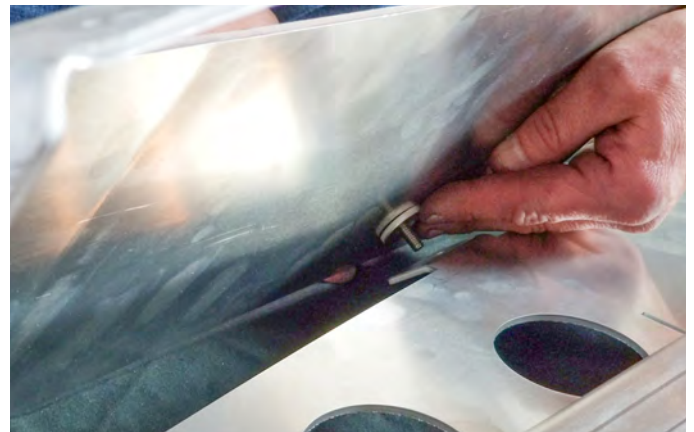
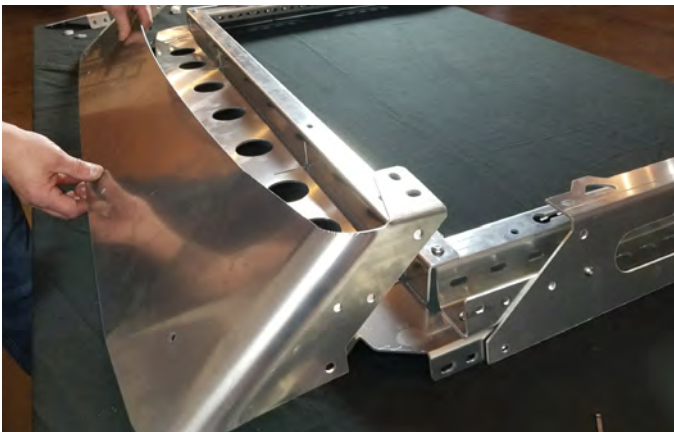


Make sure not to put any bolts in the holes pointed at below!

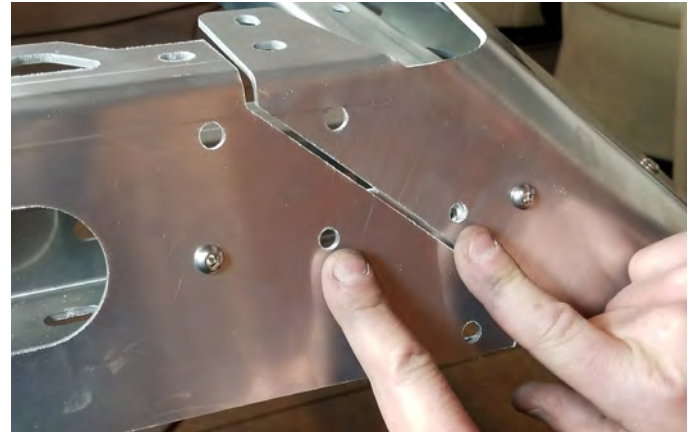
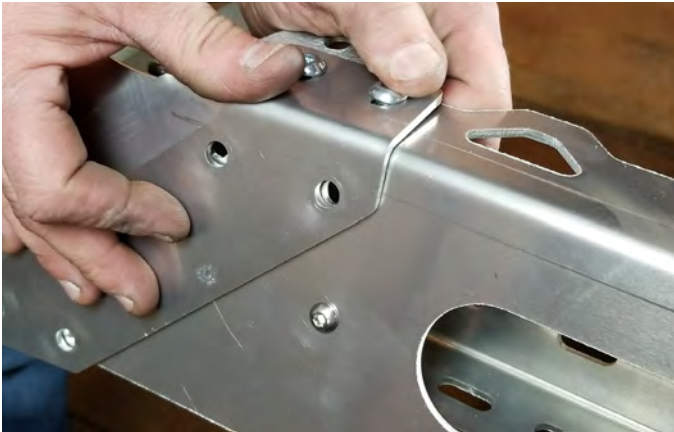


Attach front fascia piece shown bottom left photo along with a single spacer piece for each hole.

NOTE: If you bought fascia with light bar cutout, we recommend installing light bar prior to installing front fascia to make things easier.



Attach front corner connectors as shown with 5/16" bolts and nuts, remembering not to place any bolts in the holes pointed at in image below. (hand tighten bolts but keep relatively loose)



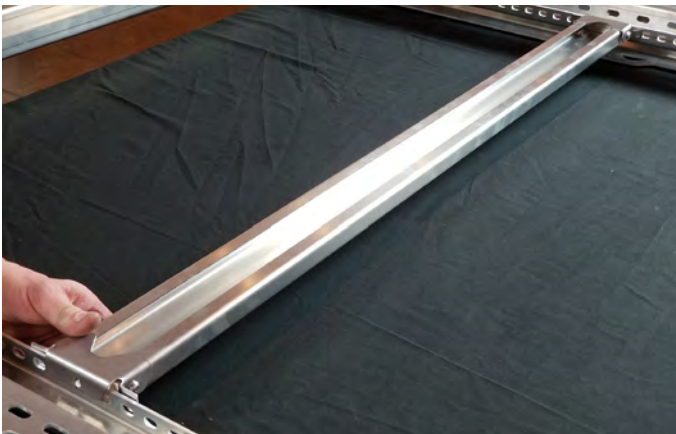
Next, attach reinforcement spacers as shown on all 6 hole locations with provided bolts & nuts. There are three mounting hole locations on each side.



Next, assemble load bars with provided end mounts using nuts and bolts. Keep hand tight but loose.



Flip roof rack on its back and attach load bars into desired locations as shown in photo. Using provided nuts and bolts, you may begin tightening down each load bar with two bolts/nuts for each side of load bars as shown.



Flip over roof rack after all load bars are tightened down with tools and begin tightening all other rack bolts to prepare to mount onto vehicle.

Roof Rack Mounts Install

Shown below are the measurement areas. From the back end (driver's side) where it curves on the back, we measured out to the following dimensions for where you need to cut.

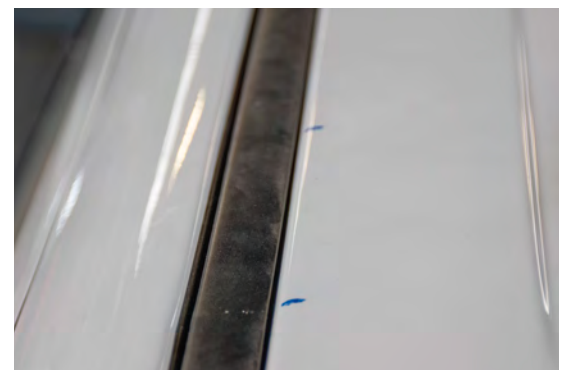
Place end of measuring tape on the back end where it curves as shown below.



Our measurements indicated at $9 \frac{7}{8}$ " mark for where to cut towards the rear. Place the mount bracket at this location and mark out your other edge for good cutting fitment.



Once you have your dimensions with the tape measure shown above and verified by placing the mount bracket on the roof, mark with a sharpie where you'll need to cut the rubber trim.



For the front mounts, we measured from the 2nd bolt hole location of rear bracket (closest to front of vehicle) as shown below and out to 37" mark. Place the front mount bracket at this point and mark the other edge (towards front of vehicle) for the other edge of bracket with a sharpie.

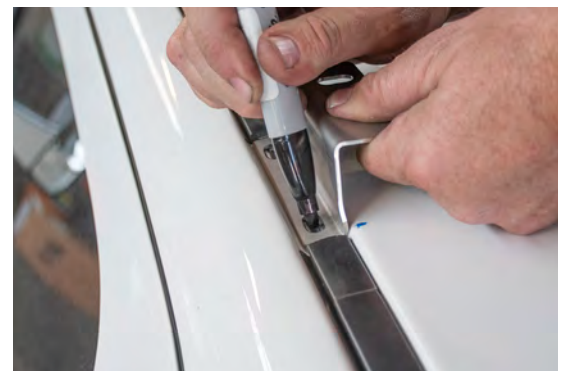


With a razor or other sharp tool, begin slicing the rubber trim off.

*We recommend putting something on the edge like a spare razor to prevent the blade from hitting the roof paint when cutting across



With the molding cut out, place the mounting bracket 'feet' into the opening and mark your holes with a sharpie for drilling.



We recommend using a Center Punch tool to 'dent' a small hole where you will be drilling so your drill bit doesn't slide out of place.



Once you've marked/dented the drill locations, begin drilling carefully until you've breached the roof.

*When drilling don't overly apply too much pressure. Carefully drill the hole out and take your time.



Shown to the right is the area with the holes drilled out and ready for the next step!



Using a riv nut tool shown to right, place the provided riv nuts into the holes and lock into place with the riv nut tool.



Shown is the completed look after the nuts have been placed into the holes.



We recommend adding some sealant around the holes to provide more weather resistance from the elements as shown to the right.



Attach the provided clips onto the support brackets as shown to the right.



Once you've drilled out your roof holes around the vehicle and installed the riv nuts, place your mounting feet into position and tighten down into place with provided washers/bolts.

Once your mounting 'feet' are placed into position and tightened down, place roof rack back onto vehicle with help of a friend and align with each bracket. Use provided 5/16" bolts and washers for each mount hole location and tighten down roof rack to each bracket as shown below.



At this point, double check all of your bolts to make sure everything is tightened down and secured.

Your all finished!



Find out more about off-road bumpers we have.