

INSTALLATION GUIDE

Trail Series Front Bumper



Included Hardware:

(4) M12 x 30
4 1/2" 13x1 1/4"
12 Washers
6 1/2" Nyloc Nuts
(2) 3/8" bolts 1 1/4"
(2) 3/8" Clip nuts
(2) 1/2" x 4 1/2" Bolts

(2) grille brackets
(2) 5/16" bolts
(2) washers
(2) 5/16" Nyloc Nuts

Skill Level:

4/5 stars (Professional install recommended)

Nissan Xterra

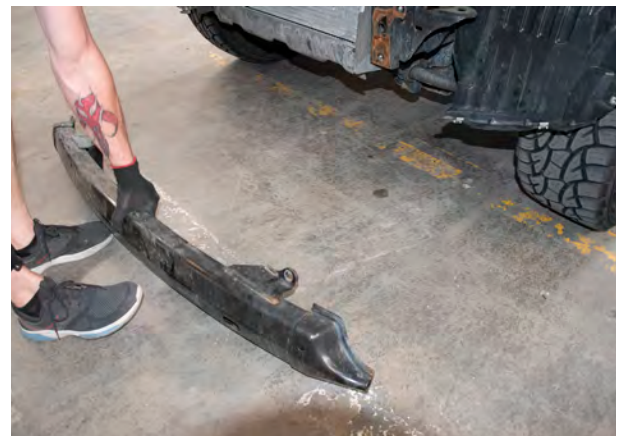
Remove stock bumper from vehicle following the outline that contains the nuts and plastic pieces that need to be removed.



Remove frame piece as shown to right with the few remaining bolts that are holding it in place.



Shown to right is the front piece removed from vehicle.



Insert bolt as shown and attach it to frame mount bracket shown in next photo



Slide the included small frame bracket next to the body frame as shown on drivers side. Bolt is pushed through frame and bracket as shown in previous photo. Tighten with included washer and nut.



We recommend hand tightening the small frame bracket with the two bolts and included washers and nuts to loosely attach to the larger frame bracket as shown in photo.



Nissan Xterra

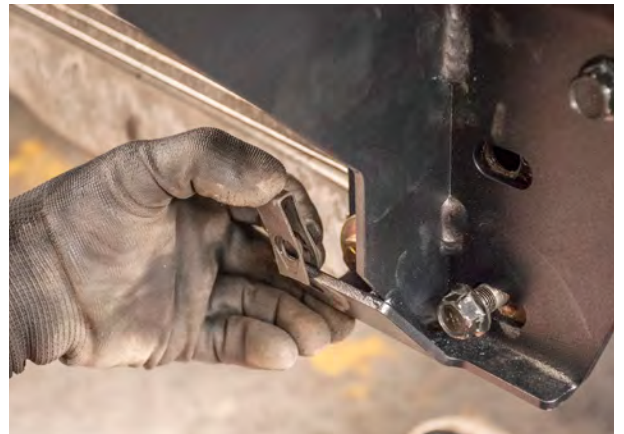
Line up the large frame bracket against the frame as shown with the 2 holes circled in photo. At this point you'll reuse the frame bolts that you initially removed to hand tighten the bracket into place.



Hand tighten but keep all bolts fairly loose at this point.



Attach provided clip piece onto the large frame bracket as shown in photo. These will be used to attach the included skid plate.



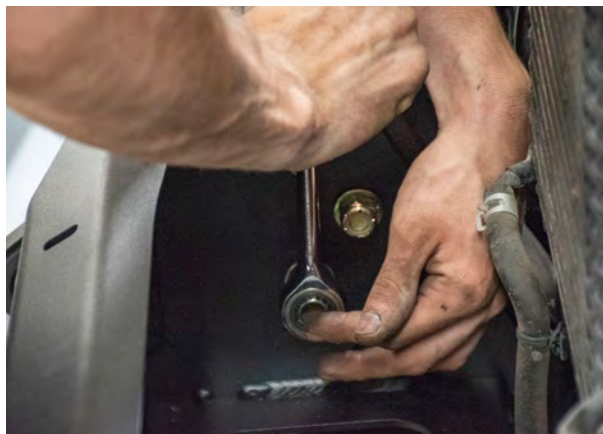
Carefully place bumper onto frame brackets and into proper alignment with body of vehicle.



Carefully insert the provided frame bolts/washers into the frame holes with the bumper lined up. Secure with provided washers/nuts. If you're happy with bumper alignment, go ahead and tighten down all nuts and bolts on the frame brackets and the bumper.



We recommend checking/re-tightening all bolts after off-roading a few times or after 500 miles.



Nissan Xterra

Attach the grill support brackets as shown in photo to right with provided bolts but only keep hand tight/snug. Once both sides are attached, test fit your grill into place to align the brackets up. If satisfied, remove grill and tighten the bracket down.

Re-place the grill into position and using the provided bolts, tighten the grill to the other edge of the bracket.

Your all done!

