

INSTALLATION GUIDE

Mule Ultra Roof Rack



Included Hardware:

- (64) 1/4" Button Head Bolts
- (64) 1/4" Nuts
- (38) 5/16" Button Head Bolts
- (38) 5/16" Nuts
- (6) Load Bars
- (12) End Caps
- (6) Sleeves
- (6) 5/16" Button Head Long
- (6) 5/16" Nuts
- (8) Riv Nuts
- (8) Rectangle Spacers
- (8) Round Spacers
- (8) 5/16" Bolts
- (8) 5/16" Washers
- (8) 5/16" Clip Nuts

Tools:

- 1/2" Open Box Wrench
- 3/16" Open Box Wrench
- 5/32" Allen Wrench
- 3/16" Allen Wrench
- Drill with 25/64 drill bit
(step bit recommended)

Skill Level:

3/5 stars (Some drilling required)



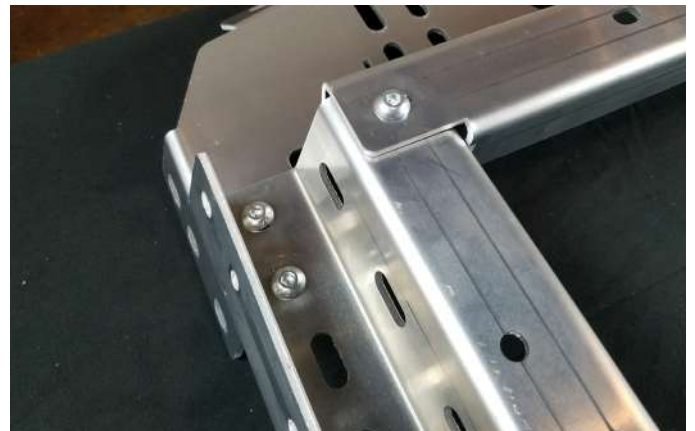
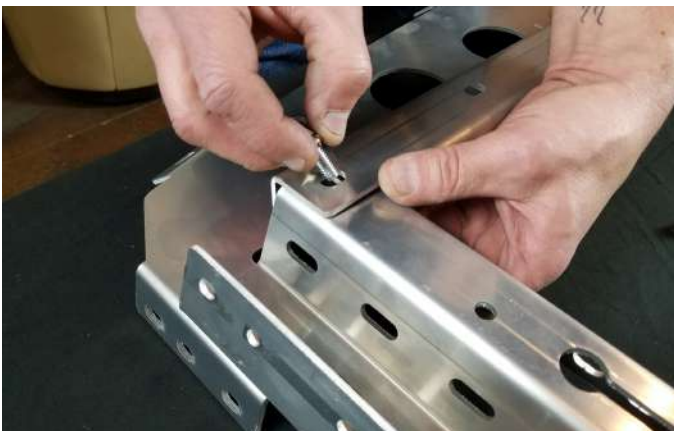
Disclaimer

Expedition One is not responsible for any damages to vehicle.
We always recommend professional assistance when installing our vehicle products.

ATTENTION: When assembling the Mule Ultra Rack, remember to hand-tighten all bolts relatively loose until the very end of the install. This allows everything to fit into place before everything is tightened down.

Rack Assembly Installation:

Lay out front and side support braces as shown with provided 5/16" bolts and nuts. (see photo below)

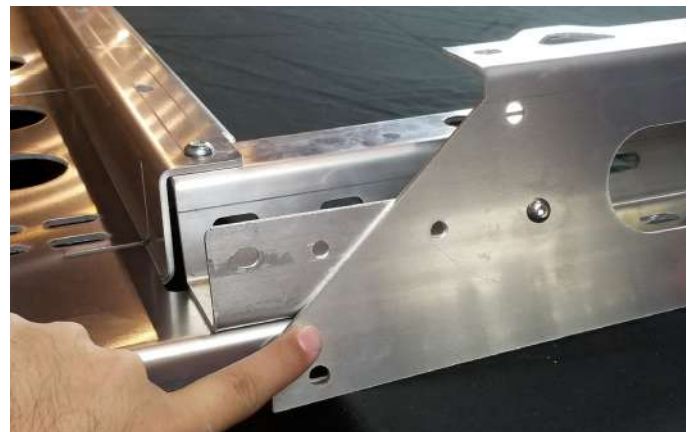


Attach rear reinforcement brace as shown with 5/16" bolts. Repeat on both sides and keep bolts loose.

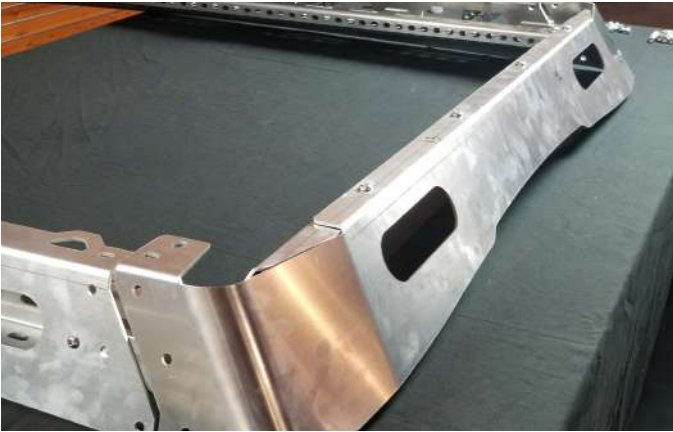


Lay out side fascia pieces and attach with 1/4" bolts (remember to hand tighten but keep loose).

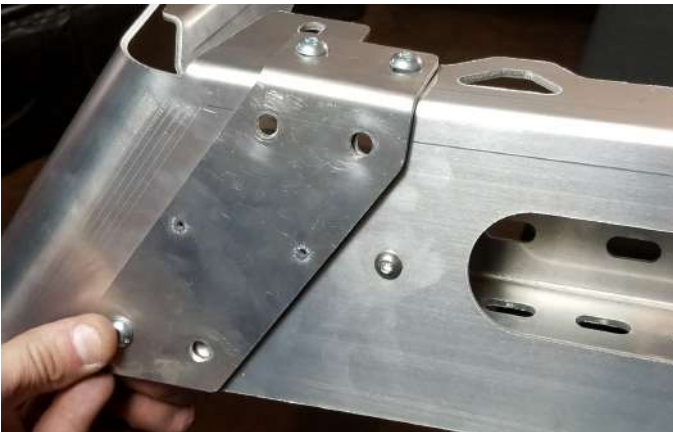
Shallow angle faces towards front end of roof rack as shown in bottom right photo!



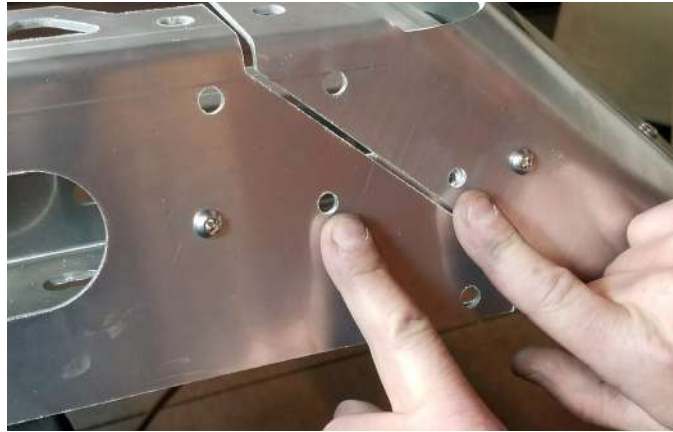
Attach rear fascia as shown with 5/16" bolts and nuts.



Next attach rear corner connectors with 5/16" bolts shown in photo below. (remember to hand tighten but keep fairly loose!)

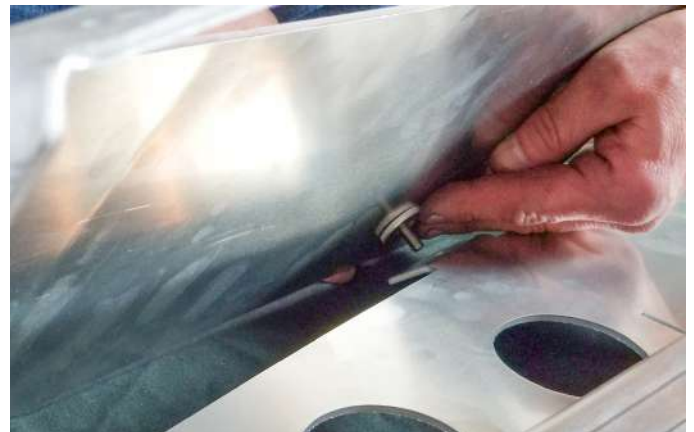


Make sure not to put any bolts in the holes pointed at below!

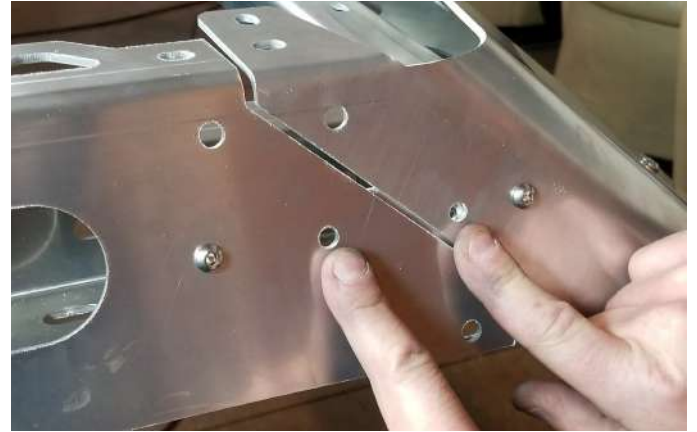


Attach front fascia piece shown bottom left photo along with a single spacer piece for each hole.

NOTE: If you bought fascia with light bar cutout, we recommend installing light bar prior to installing front fascia to make things easier.



Attach front corner connectors as shown with 5/16" bolts and nuts, remembering not to place any bolts in the holes pointed at in image below. (hand tighten bolts but keep relatively loose)



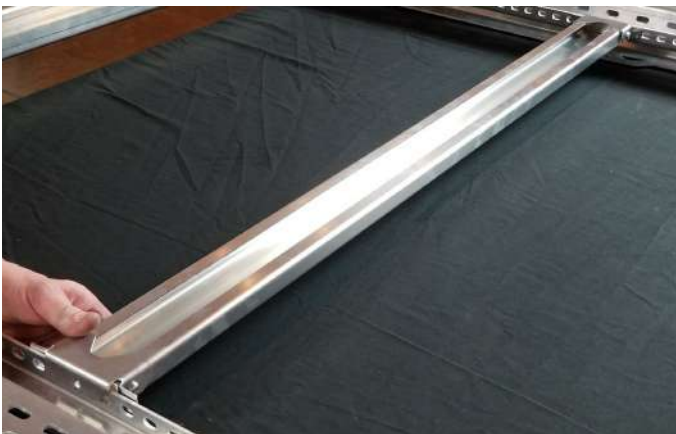
Next, attach reinforcement spacers as shown on all 6 hole locations with provided bolts & nuts. There are three mounting hole locations on each side.



Next, assemble load bars with provided end mounts using nuts and bolts. Keep hand tight but loose.



Flip roof rack on its back and attach load bars into desired locations as shown in photo. Using provided nuts and bolts, you may begin tightening down each load bar with two bolts/nuts for each side of load bars as shown.



Flip over roof rack after all load bars are tightened down with tools and begin tightening all other rack bolts to prepare to mount onto vehicle.

Start by pulling back the rubber trim on the roof from the back of cab as shown in Fig 1A.

FIG 1A



With a screwdriver, carefully lift the trim along length of roof.

FIG 1B



For the front, we recommend using a straight to carefully twist the screw driver in order to raise the plastic clip. Try not to twist or kink the plastic trim as it's easily deformed from the metal substructure.

FIG 1C



If you happen to break one of the clips, two clips on the underside are not in use and can act as backup clips once you place the trim back on later in the install. (See Fig 2A)

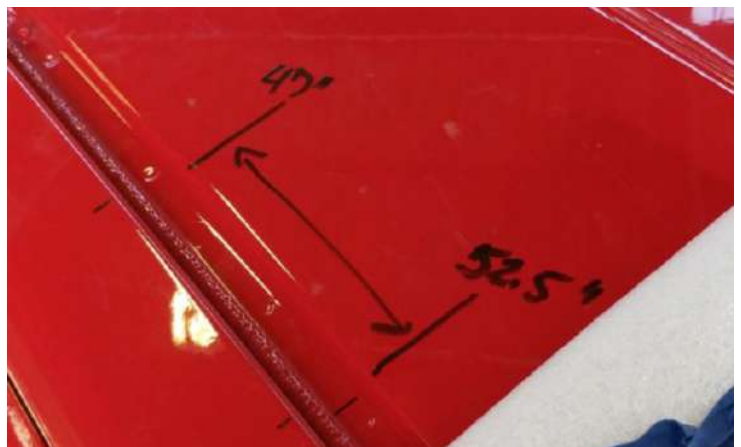
FIG 2A



FIG 2B



FIG 2C



Next, with a non-permanent marker and tape measure, measure out to 14" and 19" from the front windshield where the rubber trim starts.

*Note - you may not have to use a marker if you want to use another method that will help mark the safe zones in the same manner.

Next, you'll also need to measure out again from the front windshield where the rubber trim starts and out to the 47" and 52.5" mark for the rear.

Once you have your 'safe zones' marked, you'll want to position your roof mount bracket towards the front of vehicle by placing them up against the 14" and 47" marks when marking your drill holes.

Once all drill marks are in place, you'll need to use a 25/64 drill bit to drill your holes.

We recommend using a bit with depth collar or a step bit to control your drill descent. The roof sheet metal has 3 layers so use a really good drill bit. There is also roughly 2 1/2" of roof clearance -- any deeper and you run risk of drilling into the head liner.

FIG 3A



FIG 3B



FIG 3C



FIG 4A

For this step we've provided you with a riv nut tool piece that allows you to tighten down with a socket and wrench if you don't have a riv nut tool available.

Fig 4A, we are placing the riv nut on the tool as shown.



FIG 4B

Next, you'll need to rub some silicone sealant around the riv nut itself (Fig 4B)



FIG 4C

Place the riv nut into each hole. Using a socket and wrench, begin tightening down as shown in Fig 5A



Shown right is the riv nut being secured into place.

FIG 5A



Next, we recommend placing down the provided padding and poke holes for the mounting hardware. This helps seal everything from the elements.

FIG 5B



FIG 5C

Begin placing your roof mount brackets onto the padding as shown in Fig 5C, making sure the holes line up correctly.

*NOTE - See photo on next page for correct bracket placement on vehicle





FIG 6A

Secure brackets with provided bolts and washers and tighten with wrench.



FIG 6B

You can now place the roof rack onto the vehicle and position it as shown in Fig 6B & 6C

*NOTE - we recommend placing a small towel or blanket down onto the roof to prevent any chance of the roof rack hitting the surface accidentally while fitment and alignment is being made.



FIG 7A



FIG 7B



FIG 7B



Once happy with alignment, begin dropping provided washers and bolts into the mounts.

Take this opportunity to double check rack is aligned and the way you want it before tightening down with wrench.