

**IMPORTANT: PLEASE KEEP THIS INSTRUCTION MANUAL FOR FUTURE REFERENCE !**



# 2011 Cadillac CTS Coupe EGX Exhaust Tip & Rear Valance Mesh Accent Kit



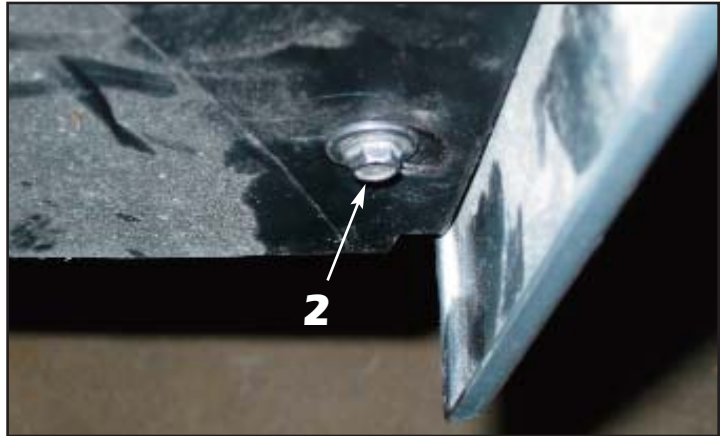
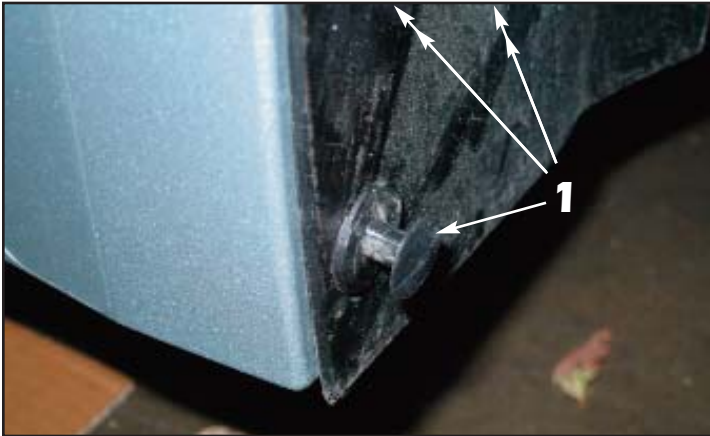
Part #: Complete 5122-1900-11E



### TOOLS REQUIRED

Automotive grade masking tape, vibrating saw or jig saw, disc grinder, electric drill, 7/64" and 5/16" drill bits, 1/4" drive metric socket wrench, 7mm socket, #2 phillips screwdriver, flat blade screwdriver, grease pencil,

L 28 HO R



1. Remove the plastic push fasteners from the front edge of the rear wheel arches (three each side) by lifting up on the center of the push pin (as shown) then pull the entire pin straight out of the mounting hole.

2. Remove the 7mm hex bolt at the bottom edge of the rear wheel arch insert.

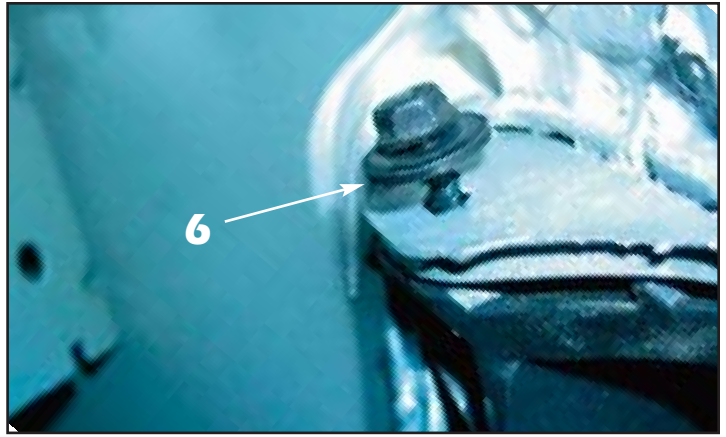


3. Remove the plastic push fasteners (one each side, just behind the tires) from the rear inside surface of the wheel arch.

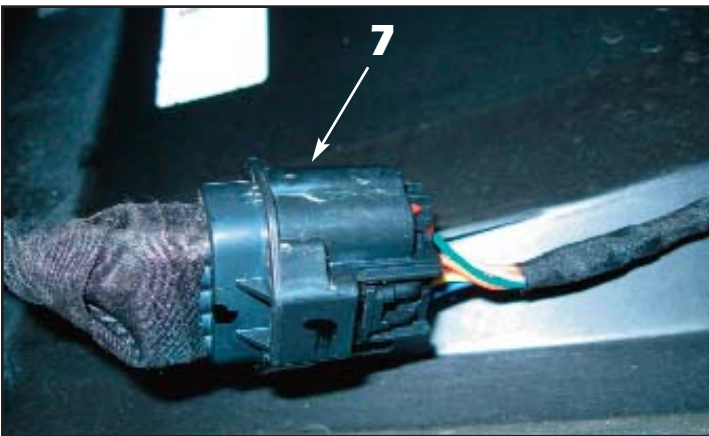
4. Remove the factory 7mm hex bolts from the upper forward portions of the factory wheel arches (one each side).



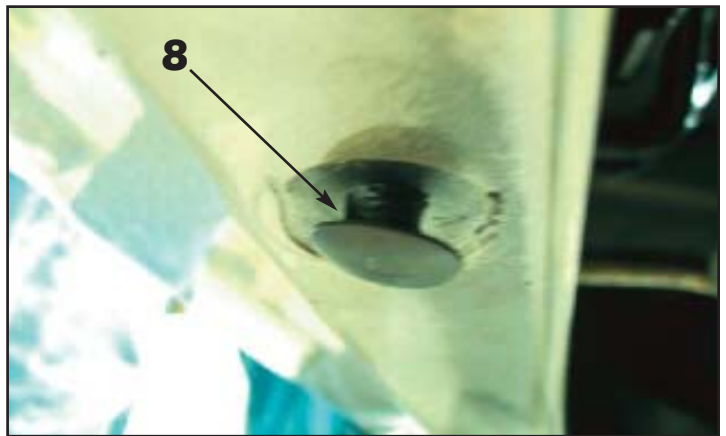
5. Pull the rear wheel arch plastic shields out from the rear wheel wells for rear bumper cover hardware access.



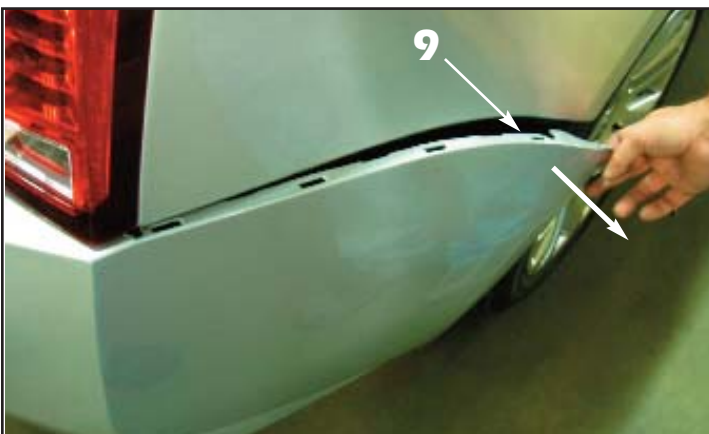
6. Once the inner wheel liners are out of the way, remove the 7mm hex screws attaching the top corners of the bumper cover (one each side).



7. Disconnect the electrical connector prior to bumper cover removal.



8. Remove the lower two (2) factory push fasteners from the bottom of the bumper cover.



9. Pull the sides of the rear bumper cover straight out to release it from the mounting channel.

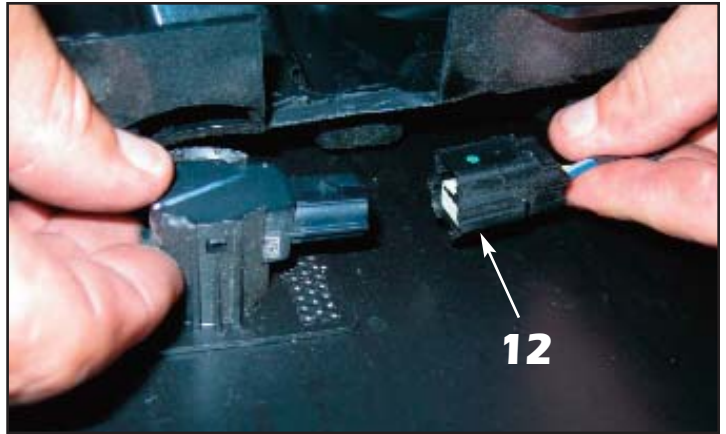


10. Use a flat blade screwdriver to push down on the mounting tabs across the top of the bumper cover.

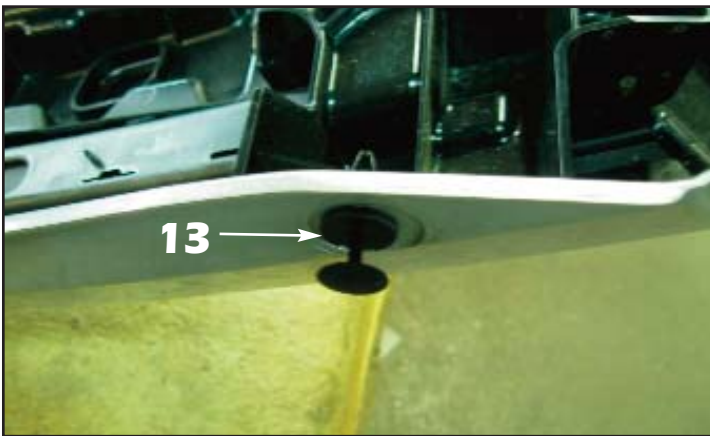




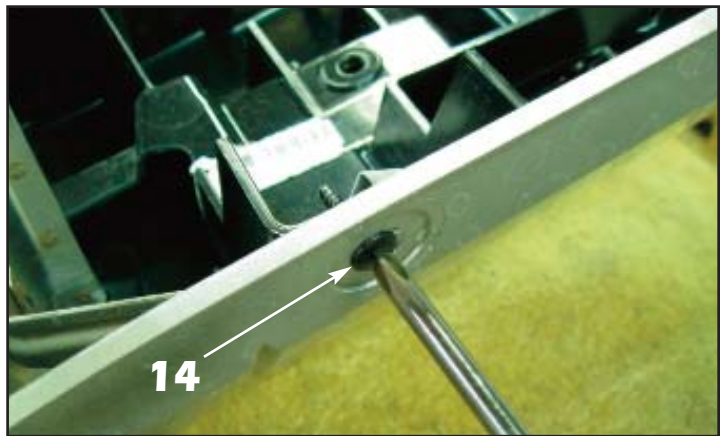
11. Pull the bumper cover free from the back of the vehicle.



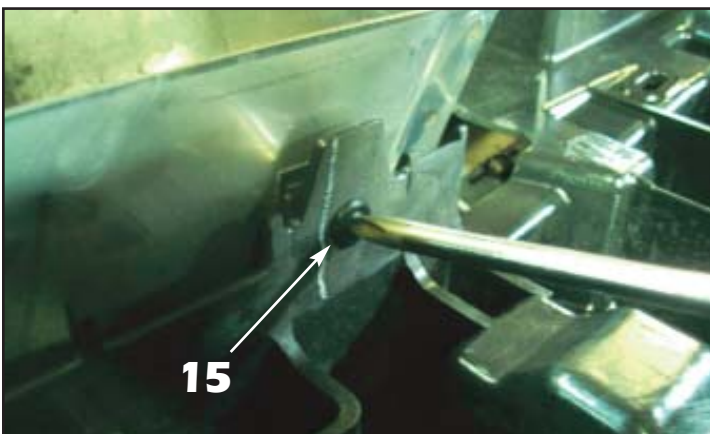
12. Disconnect the electrical connectors from the bumper cover mounted back up sensors.



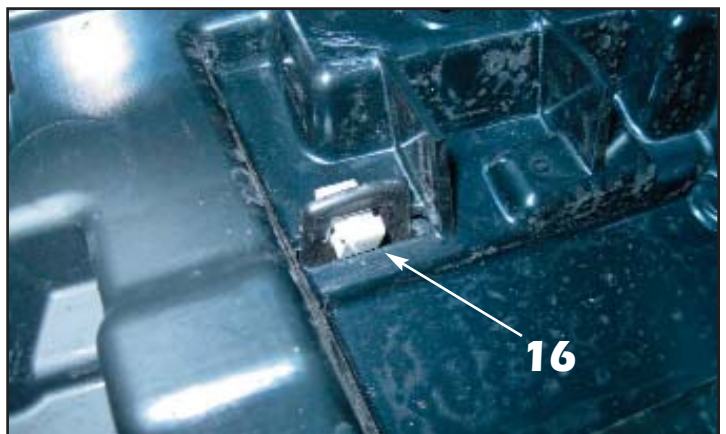
13. Remove the factory plastic push fasteners from the bottom of the bumper cover (one per side).



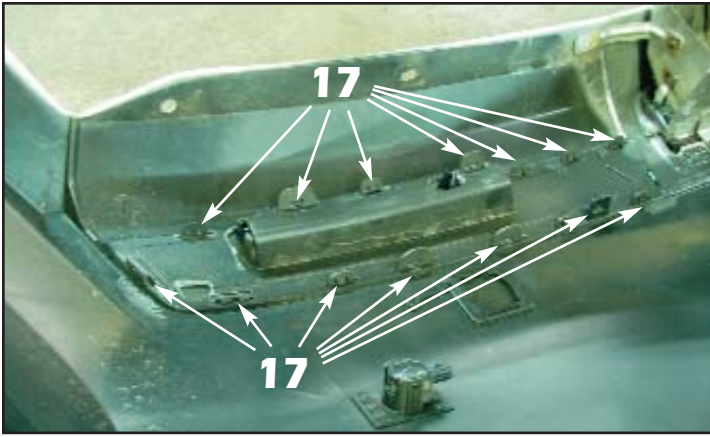
14. Remove the lower screws that secure the bumper reinforcement to the lower portion of the bumper cover.



15. Remove the upper screws retaining the bumper reinforcement to the exhaust outlet.



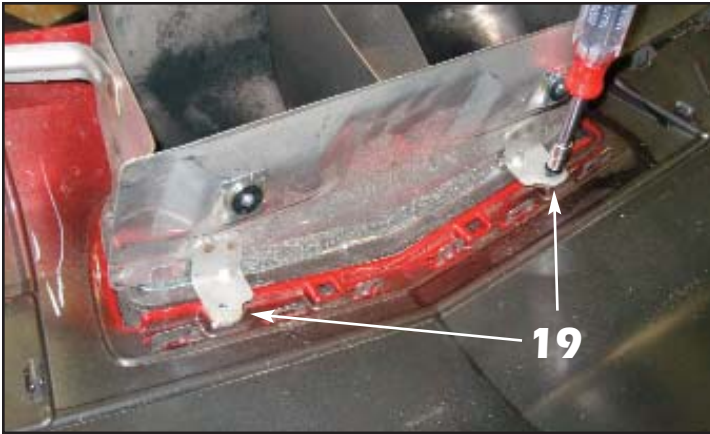
16. Remove the factory clips (one each side of the exhaust outlet), then remove the bumper reinforcement from the inside of the rear bumper cover.



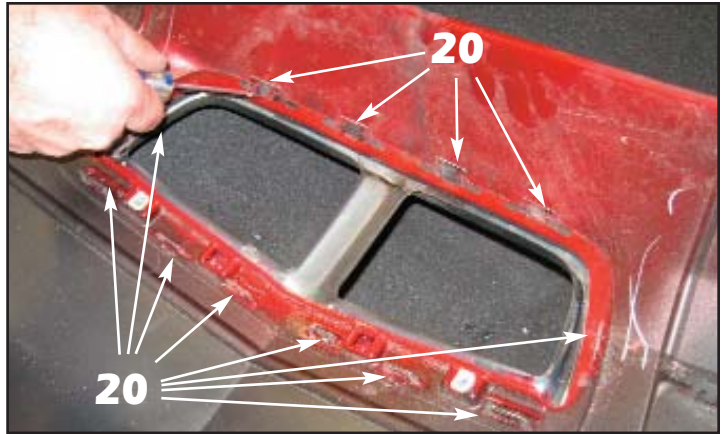
17. Release the tabs securing the factory gray plastic sections to the bumper cover and remove the plastic sections.



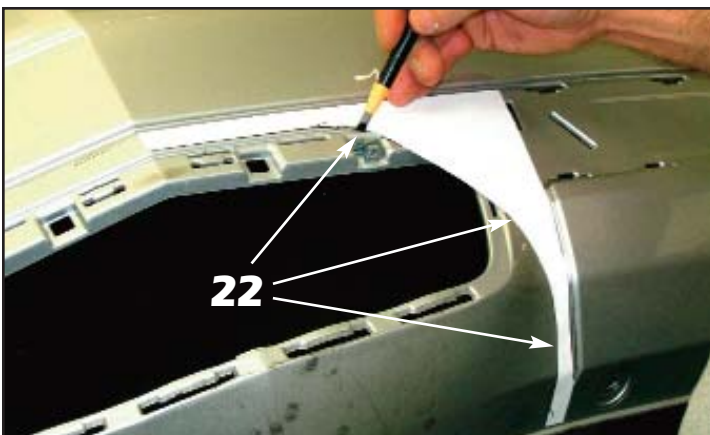
18. Squeeze the mounting clip and push the reflectors out of the gray plastic sections.



19. Remove the two (2) 7mm hex bolts attaching the exhaust outlet collector to the bumper cover and remove the collector.



20. Use a flat blade screwdriver to release the mounting tabs securing the exhaust outlet trim to the bumper cover and remove the trim.



21. Cut out the supplied template and tape it over the factory exhaust outlet once you align the top and side edges.  
22. Use a grease pencil to mark the inner edge of the template, un-tape, flip the template over and mark the opposite side (not shown).



23. Using a vibrating saw or a jig saw, cut through the bumper cover on the grease pencil marks.  
24. Cut the top edge flush with the upper edge of the lower recess (not shown).

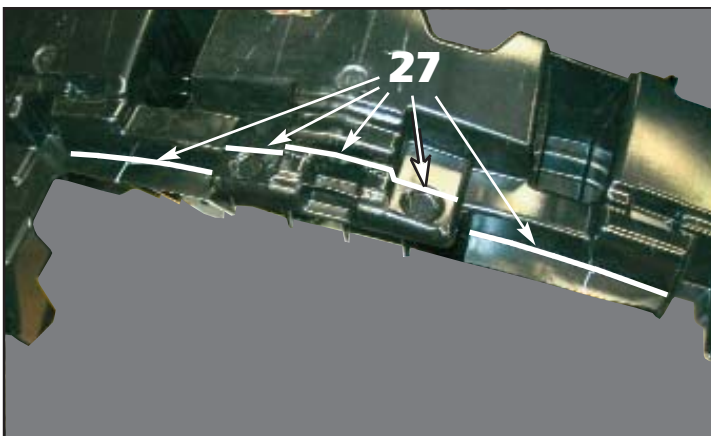




25. Use a disc grinder or coarse grit sandpaper to smooth the edge.



26. Turn the bumper cover over and use a razor knife to trim the outer mounting tabs from the back of the bumper cover.



27. Use a grease pencil to mark the lower portion of the rear bumper reinforcement. Use a jig saw or band saw to remove this portion of the reinforcement.



28. Grind off any raised portions of the reinforcement webbing that remain.



29. Apply several layers of masking tape around the recessed areas, starting at the outside edges of the mounting tab slots.  
30. Align the reflector mounting brackets into place and use a 7/64" drill bit to drill through the mounting holes in the brackets, then remove them for the following painting procedure.



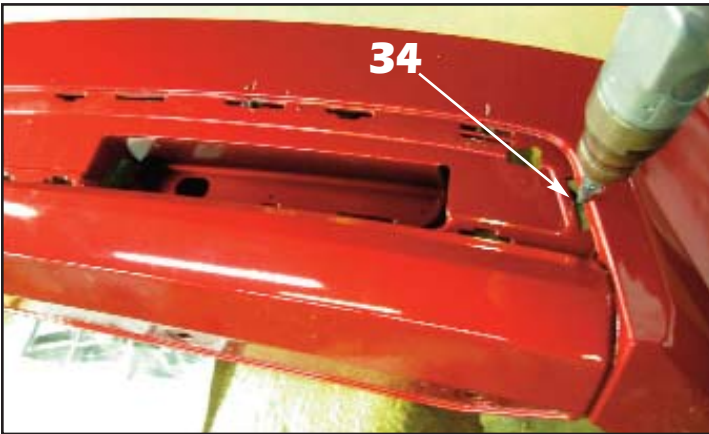
31. Use a scotch brite pad to break the gloss on the paint for proper paint adhesion.



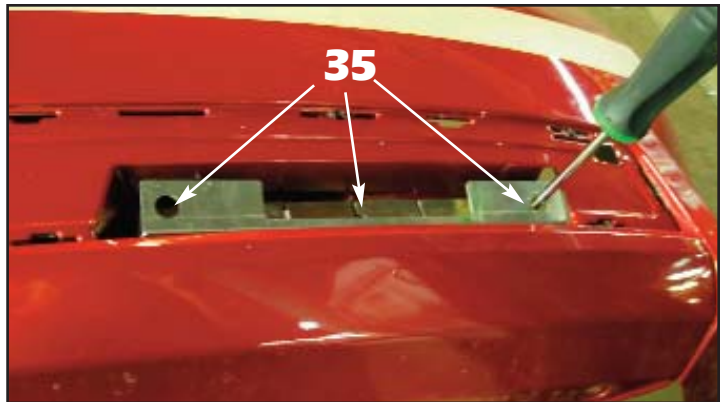
32. Apply flat or semi-gloss black paint to the recessed areas taped in the previous step.



33. Align the chrome plated surrounds into place and use a grease pencil to mark any stud locations where the opening needs to be enlarged.



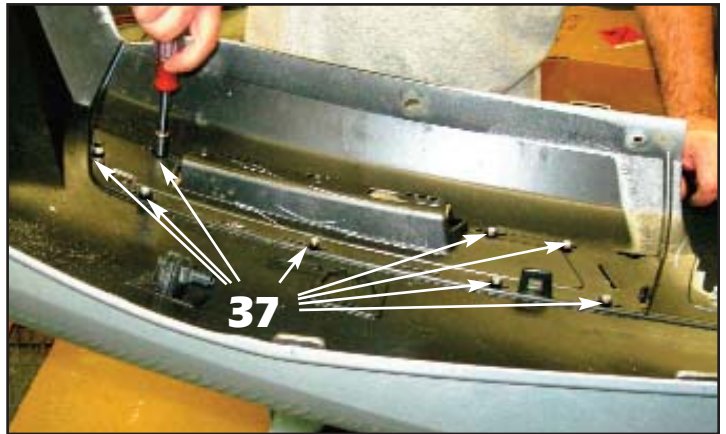
34. Use a 5/16" drill bit to drill through the slots at the grease pencil marks to allow the mounting studs to pass through.



35. Insert the #8 x 3/8" black truss head screws into the painted reflector mounting bracket holes, then carefully align the bracket into place, starting with an outer screw, align it into place and begin to tighten. Once the screw begins to thread into the bumper cover, start the center screw. Once the center screw starts to tighten, start the final screw. Once all the screws are started, finish tightening them.



36. Align the mesh and the surrounds into place, making sure the studs pass through the slots in the bumper cover.



37. Install the small black plastic washers and the #8-32 ESNA half nuts onto the studs and tighten once the mesh and surrounds are properly positioned.

38. Repeat this procedure on the opposite side.

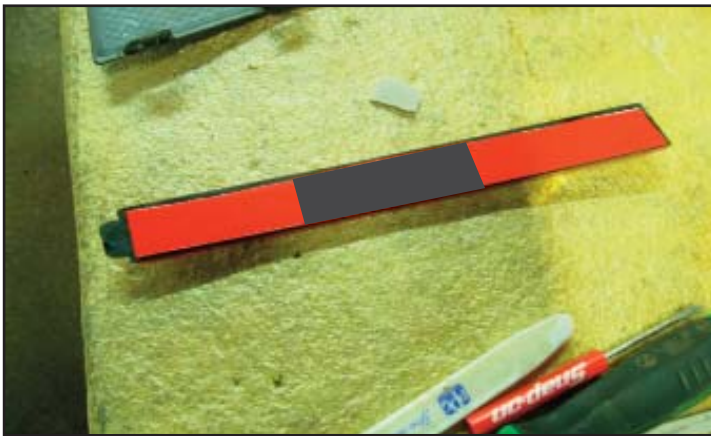




39. Use a disk grinder to grind flush the backs of the factory reflectors.



40. Grind off the mounting tabs from the factory reflectors.



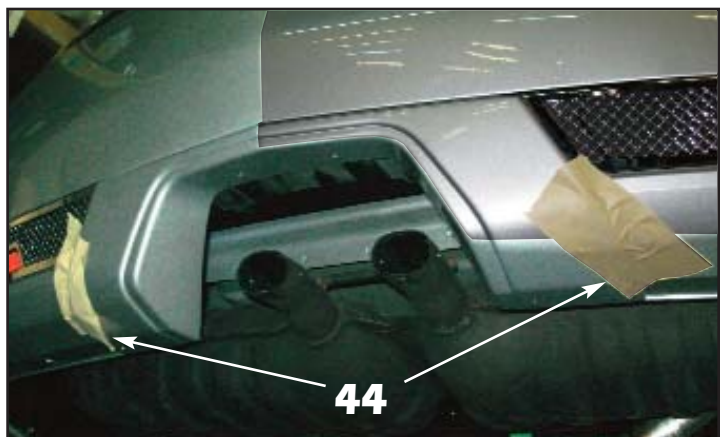
41. Apply sections of .045"x 1" double faced tape to the back of the factory reflectors.



42. Peel the backing from the double faced tape and install the reflectors onto the mounting brackets.



43. Reinstall the rear bumper, reversing the removal procedure.



44. Align the ABS surround into place and use masking tape to hold it into place during the following installation procedures.



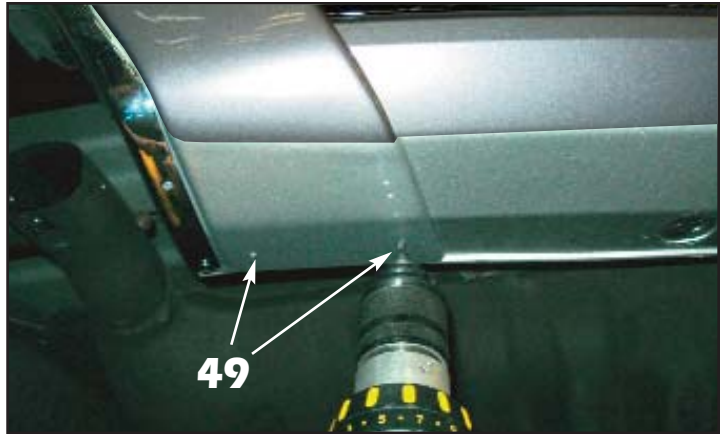
45. Use an awl or similar pointed tool to mark the four (4) mounting hole locations on the ABS surround.
46. Drill the upper mounting holes with a 3/32" drill bit and drill the lower holes with a 3/16" drill bit.



47. Install the chrome frame using the supplied #8 x 5/8" black truss head screws into the upper mounting holes.



48. Install the supplied #10-24 x 1/2" black machine screws and #10-24 ESNA nuts to secure the bottom of the frame to the bumper cover.



49. Use a 3/32" drill bit to drill through the existing holes in the ABS surround and through the factory bumper cover and install the supplied #8 x 5/8" black truss head screws.



50. Push the E&G exhaust tips over the factory exhaust pipes.

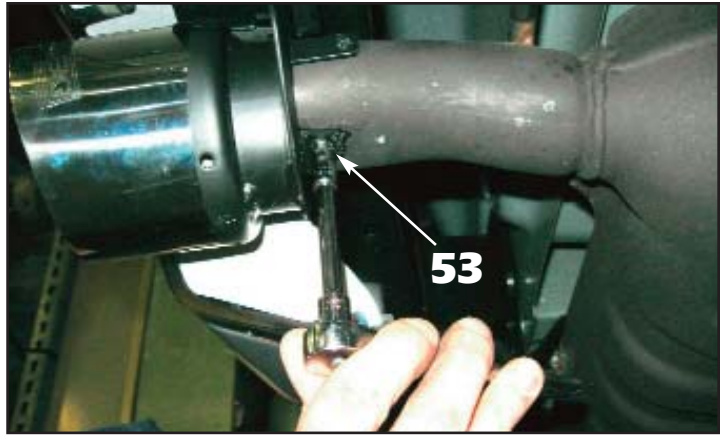


51. To set the tips to the proper depth, push the tip onto the factory exhaust piped until the pipe is flush with the inner flat edge of the exhaust tip.





52. Use a 1/8" drill bit to drill through the existing mounting holes in the tips and through the exhaust pipes.



53. Use the supplied tek screws to install the exhaust tips to the factory exhaust pipes.  
 54. E&G **STRONGLY** recommends that the tips be **welded in place** once the installation is complete.

**Part #5122-1900-11E**

QTY:	Description:	Part Number:
1	EGX Exhaust Tips & Bracket	5122-1901-11
1	Chrome Exhaust Tip Opening Trim	5122-1912-11E
1	Exhaust Tip Surround	5122-1913-11E
1	Chrome Plated Mesh Surround R	1122-0123-11E
1	Chrome Plated Mesh Surround L	1122-0124-11E
2	Chrome Plated Mesh Sections	1122-0121-11E
1	Installation Hardware Kit	5122-1902-11E
16	Small Black Plastic Washers	1999-0256-00
16	#8-32 ESNA Half Nuts	1999-0065-00
8"	.045" x 1" Double Faced Tape	3004-9244-92
1	Bumper Opening Template	5122-1914-11E
6	#8 X 5/8" Black Truss Head Screws	3999-9031-00
2	#10-24 x 1/2" Black Machine Screws	1999-0020-00
2	10-24 ESNA Lock Nut	1999-2991-00
3	#8-32 Black Truss Head Screw	1999-9574-00
4	#8 x 1/2" Hex Head Tek Screws	1999-3919-00
4	#8 Star Lock Washers	1999-0247-00
1 set	Reflector Mounting Brackets	Right Side 1122-0125-11 Left Side 1122-0126-11
6	#8 x 3/8 Black Truss Head Screws	1999-9574-00



2011 Cadillac CTS Coupe EXX Exhaust  
Bumper Opening Template  
Part # 5.22 - 1914 - 11E

