

DIESEL SUPPLEMENT TO 2013 BUYERS GUIDE

DORMAN[®]

DIESEL



**THE LEADER IN NEW
TO THE AFTERMARKET DIESEL**



WHAT'S INSIDE

FORD

7.3L POWERSTROKE

Fuel System Components	2
Heater Hose Assemblies	2
Power Steering Lines	2

6.0L POWERSTROKE

Drivetrain	3
EGR Cooler & Components ...	3
Fuel System Components ..	3-4
Heater Hose Assemblies	4
Manifolds & Covers	4

6.4L POWERSTROKE

EGR Cooler & Components ...	5
Fuel System Components	5
Manifolds & Covers	5

GM

6.5L

Fuel System Components	6
Oil System Components	6
Quick Connectors	6

6.6L DURAMAX

Cooling	6
EGR Cooler & Components ...	7
Power Steering Lines	7
Pulleys & Balancers	7
Quick Connectors	7

DODGE

5.9L CUMMINS

Pulleys & Balancers	8
---------------------------	---

VW / AUDI

VOLKSWAGEN & AUDI

Power Steering Lines	8
----------------------------	---

ADDITIONAL DIESEL SOLUTIONS

Clutch Lines	9
Fuel System	9
Oil Lines	10
Transmission Lines	11

7.3L POWERSTROKE

FORD

FUEL SYSTEM COMPONENTS

577-728



Fuel Filler Neck

2010-99

OEM Number:
8C3Z9034KF

ALSO FITS: 6.0L, 6.4L

HEATER HOSE ASSEMBLIES

626-231



Engine Heater Hose
Assembly

2004-98

OEM Number:
XC2Z18B402FA

7.3L and Gas

POWER STEERING LINES

979-2003

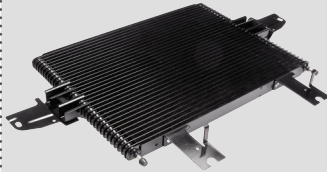


Power Steering Line
Pressure Hose

2003-99

OEM Number:
F81Z3A717CA

DRIVETRAIN



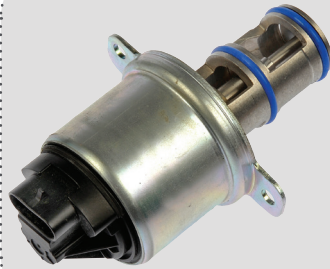
918-216

Transmission Oil Cooler
2010-05

OEM Number:
5C3Z7A095B,
5C3Z7A095CA

Air flows through the cooler to reduce transmission fluid temperatures ensuring the transmission operates at recommended temperatures for a longer system life

EGR COOLING & COMPONENTS



904-219

EGR Valve
2010-03

OEM Number:
4C3Z9F45ZA,
4C3Z9F45ZARM
5C3Z9F452AA,
5C3Z9F452ARM

Part of the exhaust gas recirculation system redirects exhaust gas to the intake manifold for emission purposes



904-260

EGR Cooler
2004-03

OEM Number:
3C3Z9P456B

FUEL SYSTEM COMPONENTS



904-293

High Pressure Oil Rail Tubes
2010-03

OEM Number:
5C3Z9T287ARM

Connects the fuel injector to the high pressure oil rail



Reduce Repair Cost - Replace just the failed rail tubes instead of the entire injector rail assembly



904-293T

High Pressure Oil Rail Tool
2010-03

OEM Number:
5C3Z9T287ARM

Required when replacing the Injector Ball Tube

FUEL SYSTEM COMPONENTS (CONT)

577-728



Fuel Filler Neck

2010-99

OEM Number:
8C3Z9034KF

ALSO FITS: 6.4L, 7.3L

HEATER HOSE ASSEMBLIES

626-214



Engine Heater Hose
Assembly

2005-03

OEM Number:
3C3Z8075AE

626-230



Engine Heater Hose
Assembly

2010-03

OEM Number:
3C3Z8592AB

MANIFOLDS & COVERS

679-012



Driver Side Turbo
Up Pipe

2010-03

OEM Number:
3C3Z6K854DA

679-011



Driver Side Turbo
Up Pipe

2007-05

OEM Number:
5C3Z6K854CA

679-009



Passenger Side Turbo
Up Pipe

2004-03

OEM Number:
3C3Z6K854AA

679-010



Passenger Side Turbo
Up Pipe

2010-04

OEM Number:
4C3Z6K854BA

EGR COOLER & COMPONENTS



904-273

EGR Cooler, Horizontal
2010-08

OEM Number:
8C3Z9F464E



904-274

EGR Cooler, Vertical
2010-08

OEM Number:
8C3Z9P456A

FUEL SYSTEM COMPONENTS



577-728

Fuel Filler Neck
1999-10

OEM Number:
8C3Z9O34KF
ALSO FITS: 6.0L, 7.3L

MANIFOLDS & COVERS



679-007

Driver Side Turbo
Up Pipe
2010-08

OEM Number:
8C3Z6K854B



Includes gaskets and hardware
for a complete installation



679-008

Passenger Side Turbo
Up Pipe
2010-08

OEM Number:
8C3Z6K854A



Includes gaskets and hardware
for a complete installation



6.5L

FUEL SYSTEM COMPONENTS



577-097

Fuel Filler Neck

2000-88

OEM Number:
15712145

OIL SYSTEM COMPONENTS



264-163

Engine Oil Pan

2002-99

OEM Number:
12563902

QUICK CONNECTORS



800-705

Transmission Connector

2002-96

OEM Number:
15027502

6.6L DURAMAX

COOLING



902-901

Coolant Bypass Pipe

2005-01

OEM Number:
97371074



82597

Coolant Cap

2010-01

OEM Number:
15075118

6.5L & 6.6L DURAMAX

6.6L DURAMAX

EGR COOLING & COMPONENTS



904-132

EGR Cooler
2010-07
 OEM Number:
 98034351



POWER STEERING LINES



979-113

Power Steering Line Pressure Hose
2010-01
 OEM Number:
 15295841

PULLEYS & BALANCERS



419-623

Idler Pulley
2010-01
 OEM Number:
 98072072

QUICK CONNECTORS



800-409

Coolant Connector
2013-01
 OEM Number:
 15032062, 15151875



800-413

Cooling Quick Connector
2009-00
 OEM Number:
 15055343



800-414

Heater Hose Connector
2009-00
 OEM Number:
 15055342



800-707

Oil Cooler Line Connector
2009-03
 OEM Number:
 15170197, 15797464



800-613

Transmission Connector
2013-03
 OEM Number:
 88996645



800-706

Transmission Connector
2003-02
 OEM Number:
 15194557

6.6L DURAMAX

DODGE

PULLEYS & BALANCERS



300-808

Engine Cooling Fan
Pulley Bracket

2002-94

OEM Number:
4429639, 4429660



300-809

Engine Cooling Fan
Pulley Bracket

2010-03

OEM Number:
5089744AA,
5086744AA,
4429639



300-149

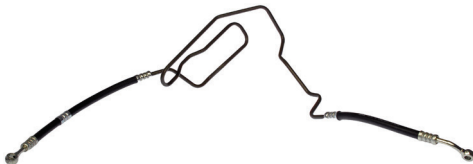
Power Steering Pump
Pulley

2007-03

OEM Number:
53032637AC

VW/AUDI

POWER STEERING LINES



979-001

Power Steering Line Pressure
Hose

2004-99

OEM Number:
1J0422893DD



979-005

Power Steering Return Line

2005-96

OEM Number:
8D0422891C

ADDITIONAL PRODUCTS

CLUTCH LINES

8 NEW SKUs Available!

Hydraulic Clutch Lines



628-235

MAKE	ENGINE	YEARS	OE #	PART #
Dodge	5.9L	1997-94	52087600	628-210
Ford	6.0L	2007-06	6C3Z7C522C	628-235
Ford	6.9L	1986-83	E3TZ7A512A	628-204
Ford	7.3L	1998-97	F65Z7A512AD, F65Z7A512D	628-237
Ford	7.3L	1997-88	F5TZ7A512A	628-200
GM	6.2L	1995-92	12387709	628-101
GM	6.2L	1991-88	15585421	628-100
GM	6.5L	2002-96	15727261	628-105

FUEL SYSTEM

9 NEW SKUs Available!

Fuel Line Assembly Feed



800-840

MAKE	ENGINE	YEARS	OE #	WHEELBASE LENGTH	PART #
GM	6.2L, 6.5L	1995-88	15695639, 15703982	131.5 Inch	800-840
GM	6.2L, 6.5L	2000-88	15722320	131.5 Inch	800-853
GM	6.2L, 6.5L	2000-88	15722264	155.5 Inch	800-846
GM	6.2L, 6.5L	2000-89	15027937	141.5 Inch	800-849

Fuel Line Assembly Return



800-842

MAKE	ENGINE	YEARS	OE #	WHEELBASE LENGTH	PART #
GM	6.2L, 6.5L	2000-90	15722291	131.5 Inch	800-842
GM	6.2L, 6.5L	2000-90	15722293	131.5 Inch	800-854
GM	6.2L, 6.5L	2000-90	15722295	141.5 Inch	800-852
GM	6.2L, 6.5L	2000-90	15722290	155.5 Inch	800-848

Fuel Supply Lines



800-863

MAKE	ENGINE	YEARS	OE #	PART #
Ford	7.3L	2003-99	F81Z9J338NA	800-863

ADDITIONAL DIESEL SOLUTIONS

ADDITIONAL PRODUCTS

OIL LINES

31 NEW SKUs Available!

Engine Oil Lines

MAKE	ENGINE	YEARS	OE #	POSITION	PART #
Dodge	5.9L	2009-04	5135786AB	Outlet (Upper)	625-212
Dodge	6.7L	2011-07	68002982AA	Inlet	625-211
Ford	6.0L	2007-06	3C3Z9T516A	Turbo Inlet	625-210
GM	6.2L	1993-92	12472258	Inlet (Lower)	625-173
GM	6.2L	1993-92	12472259	Outlet (Upper)	625-174
GM	6.2L	1993-88	12472289	Inlet (Upper)	625-165
GM	6.2L	1993-88	12472264	Outlet (Lower)	625-157
GM	6.2L	1992-88	12472263	Inlet (Lower)	625-133
GM	6.2L	1991-85	12472199	Inlet (Upper)	625-154
GM	6.2L	1991-85	12472219	Inlet (Upper)	625-125
GM	6.2L	1991-85	12472220	Outlet (Lower)	625-126
GM	6.2L	1991-85	12472200	Outlet (Lower)	625-155
GM	6.2L	1989-87	12472347	Inlet (Passenger Side)	625-635
GM	6.2L	1989-87	12472209	Outlet (Driver Side)	625-619
GM	6.2L, 6.5L	1994-88	12472265	Outlet (Upper)	625-134
GM	6.5L	2002-97	15104801, 15158541	Inlet (Driver Side)	625-113
GM	6.5L	2002-97	15104802, 15158526	Outlet (Passenger Side)	625-112
GM	6.5L	2002-96	15096844	Inlet (Lower)	625-129
GM	6.5L	2002-96	15096851, 15152623	Inlet (Upper)	625-106
GM	6.5L	2002-96	15096854	Outlet (Lower)	625-130
GM	6.5L	2000-97	15104800, 15158542	Inlet (Driver Side)	625-147
GM	6.5L	2000-97	15104803, 15158540	Outlet (Passenger Side)	625-148
GM	6.5L	1997-95	12472312, 19213710	Inlet (Driver Side)	625-143
GM	6.5L	1997-95	12472313	Inlet (Driver Side)	625-145
GM	6.5L	1997-95	12472314	Outlet (Passenger Side)	625-114
GM	6.5L	1997-95	12472315	Outlet (Passenger Side)	625-146
GM	6.5L	1996-94	12472304	Inlet (Lower)	625-110
GM	6.5L	1996-94	12472305	Outlet (Upper)	625-109
GM	6.5L	1994-92	12472290	Inlet (Lower)	625-164
GM	6.5L	1994	12472329	Outlet (Passenger Side)	625-309
Sprinter	2.7L, 3.0L	2006-03	5103984AA	Inlet	625-215



625-211



625-210



625-134



625-143

ADDITIONAL PRODUCTS

TRANSMISSION LINES

28 NEW SKUs Available!

Transmission Oil Cooler Lines



624-332



624-291



624-168

MAKE	ENGINE	YEARS	OE #	PART #
Dodge	5.9L	2002-98	52028633	624-991
Dodge	5.9L	2002-94	52028673	624-353
Dodge	5.9L	2000-94	4798875AB	624-332
Dodge	5.9L	2000-94	4798876AB	624-333
Dodge	5.9L	1998-94	5011244AA	624-352
Dodge	5.9L	1998-94	52028674	624-982
Dodge	5.9L	1998-89	4638427	624-373
Ford	6.0L, 7.3L	2005-96	D5AZ7B093A	624-253
Ford	7.3L	2003-99	F81Z7A030CA	624-058
Ford	7.3L	2002-97	F75Z7A030AA	624-202
Ford	7.3L	2002-97	F75Z7A030GA	624-204
Ford	7.3L	2001-99	YC3Z7C410AB	624-291
Ford	7.3L	2001-99	YC3Z7B028AA	624-466
Ford	7.3L	2000-99	F81Z7A031CE	624-471
Ford	7.3L	2000-97	F7TZ7F113DD	624-206
Ford	7.3L	1997	F85Z7A031BA	624-226
GM	6.5L	2002-97	15052179	624-961
GM	6.5L	2002-97	15745475	624-137
GM	6.5L	2002-96	15052181	624-141
GM	6.5L	2000-97	15052185	624-120
GM	6.5L	2000-97	15745473	624-146
GM	6.5L	2000-96	15051894	624-168
GM	6.5L	2000-96	15051895	624-104
GM	6.5L	1994	12472327	625-312
GM	6.6L	2008-06	20835123, 21998958	625-199
GM	6.6L	2005-03	15170215	624-896
GM	6.6L	2002-01	15767596	624-894
GM	6.6L	2009	20759971, 20835125	624-158

ADDITIONAL DIESEL SOLUTIONS