

INSTALL/REMOVAL INSTRUCTIONS: WINDOW REGULATOR

ATTENTION: Refer to the appropriate shop manual for your vehicle to obtain specific service procedures for this part. If you do not have a service manual or lack the skill to install this part, it is recommended that you seek the services of a qualified technician. Pay special attention to all cautions and warnings included in the shop manual. Read and follow all instructions carefully.

REMOVAL/INSTALL OF WINDOW REGULATOR (748-568) Jeep Liberty 2002–2006

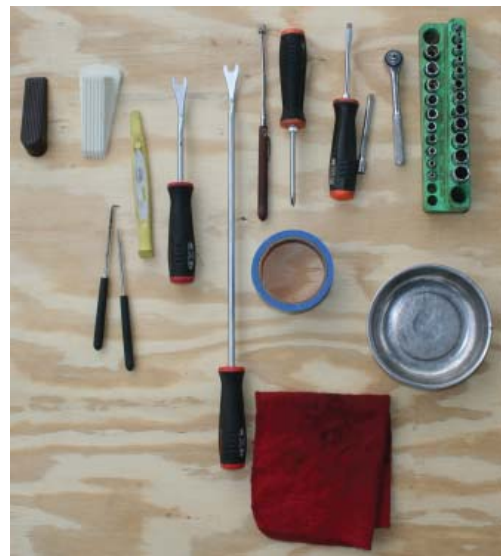
General Tech Tips:

- Use painter's tape rather than duct tape to secure window. It will not damage paint or leave sticky residue.
- A plastic pry tool is useful. It will not easily damage delicate trim like a screwdriver or metal pry bar.
- The replacement regulator should have a liberal amount of grease on slide area. If there is not much grease present, white lithium grease works well to lubricate the slide area.
- Aftermarket window tinting can cause the window to travel slower and put additional strain on the window regulator assembly.
- Window run channels should be cleaned and lubricated before installation of a new window regulator assembly. Silicone spray works well.

**PLEASE WEAR SAFETY
GLASSES!**

Tools required for removal and installation of window regulator and motor assembly:

- **Silicone spray lubricant**
- **Trim panel removal tool**
- **Pick**
- **Saddle cup assembly, tape, or wedge to hold window in place**
- **Flat-blade screwdriver or plastic pry tool**
- **10mm socket or driver**
- **Phillips screwdriver**
- **Grease pencil or marker**

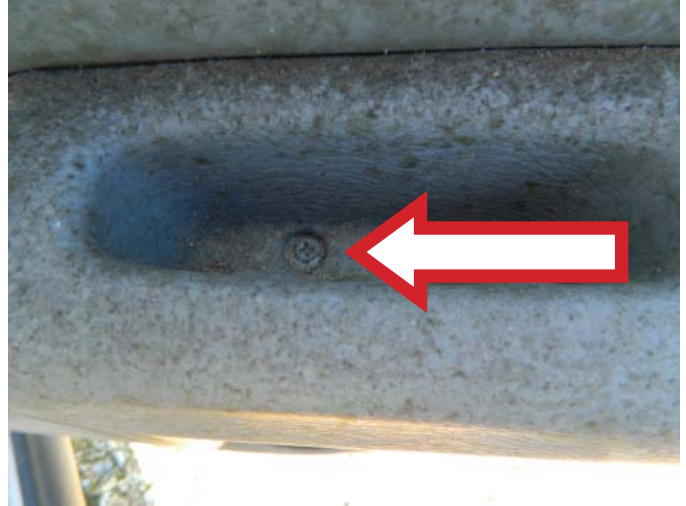


INSTALL/REMOVAL INSTRUCTIONS: WINDOW REGULATOR

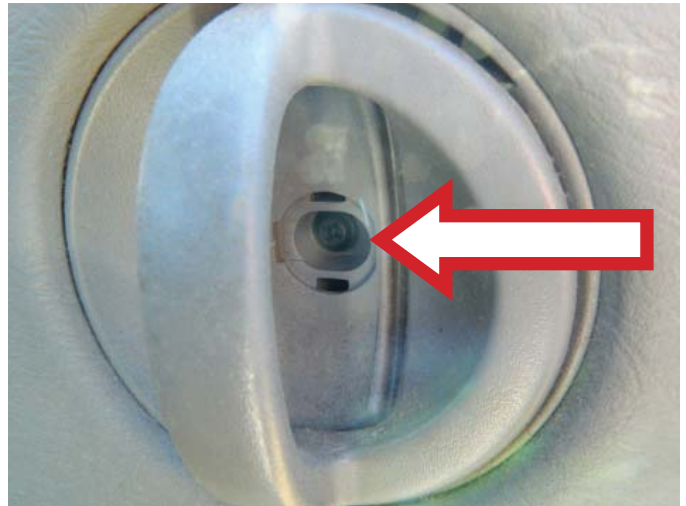
ATTENTION: Refer to the appropriate shop manual for your vehicle to obtain specific service procedures for this part. If you do not have a service manual or lack the skill to install this part, it is recommended that you seek the services of a qualified technician. Pay special attention to all cautions and warnings included in the shop manual. Read and follow all instructions carefully.

Removal Instructions

STEP 1: Using a Phillips head screwdriver, remove the interior door trim panel retaining screw.



STEP 2: Using a pic or small flat-blade screwdriver, remove the cover exposing an interior door trim panel attaching screw. Once the cover has been removed, use a Phillips head screw driver to remove the interior door trim panel attaching screw.



STEP 3: Using a trim panel removal tool, release the interior door trim panel retainers.
NOTE: The interior door trim panel retainers are about 8 inches apart from each other.

INSTALL/REMOVAL INSTRUCTIONS: WINDOW REGULATOR

ATTENTION: Refer to the appropriate shop manual for your vehicle to obtain specific service procedures for this part. If you do not have a service manual or lack the skill to install this part, it is recommended that you seek the services of a qualified technician. Pay special attention to all cautions and warnings included in the shop manual. Read and follow all instructions carefully.

STEP 4: Once the interior door trim panel has been released, disconnect the interior door latch rod from the interior door handle.



STEP 5: Remove the interior door trim panel.

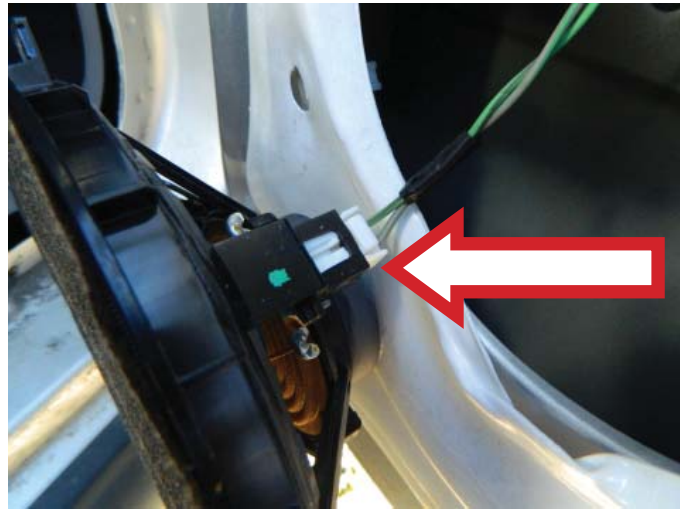
STEP 6: Using a Phillips head screw driver, remove the three (3) door speaker attaching screws.



INSTALL/REMOVAL INSTRUCTIONS: WINDOW REGULATOR

ATTENTION: Refer to the appropriate shop manual for your vehicle to obtain specific service procedures for this part. If you do not have a service manual or lack the skill to install this part, it is recommended that you seek the services of a qualified technician. Pay special attention to all cautions and warnings included in the shop manual. Read and follow all instructions carefully.

STEP 7: Disconnect the door speaker.



STEP 8: Remove the interior water vapor barrier.



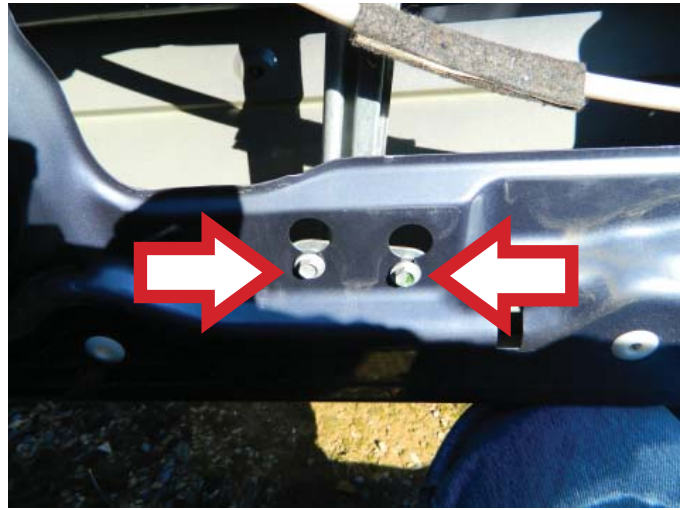
STEP 9: Operate the power window switch and lower the window glass to expose the two (2) window glass mounting bolts.

STEP 10: Remove the two (2) window glass mounting bolts and manually slide the window glass into the up position. Hold the window glass in place with either a saddle cup assembly, painter's tape, or a wedge.

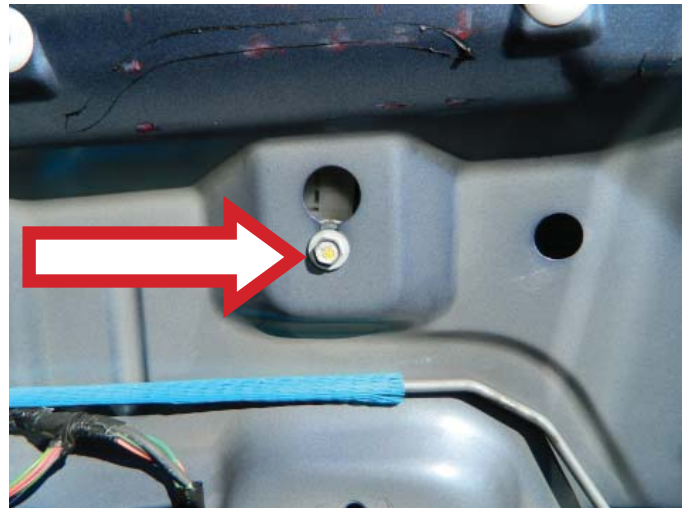
INSTALL/REMOVAL INSTRUCTIONS: WINDOW REGULATOR

ATTENTION: Refer to the appropriate shop manual for your vehicle to obtain specific service procedures for this part. If you do not have a service manual or lack the skill to install this part, it is recommended that you seek the services of a qualified technician. Pay special attention to all cautions and warnings included in the shop manual. Read and follow all instructions carefully.

STEP 11: Remove the bottom two (2) regulator attaching bolts.



STEP 12: Remove the upper regulator attaching bolt.



STEP 13: Once the window regulator attaching hardware has been removed, remove the window regulator assembly through the access hole.

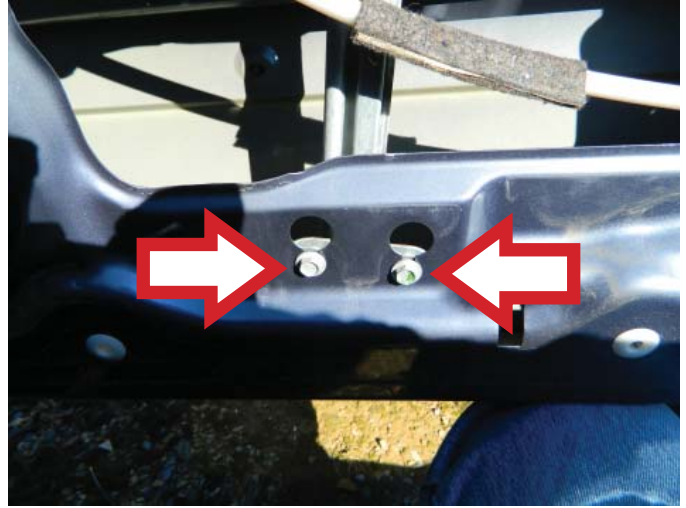
INSTALL/REMOVAL INSTRUCTIONS: WINDOW REGULATOR

ATTENTION: Refer to the appropriate shop manual for your vehicle to obtain specific service procedures for this part. If you do not have a service manual or lack the skill to install this part, it is recommended that you seek the services of a qualified technician. Pay special attention to all cautions and warnings included in the shop manual. Read and follow all instructions carefully.

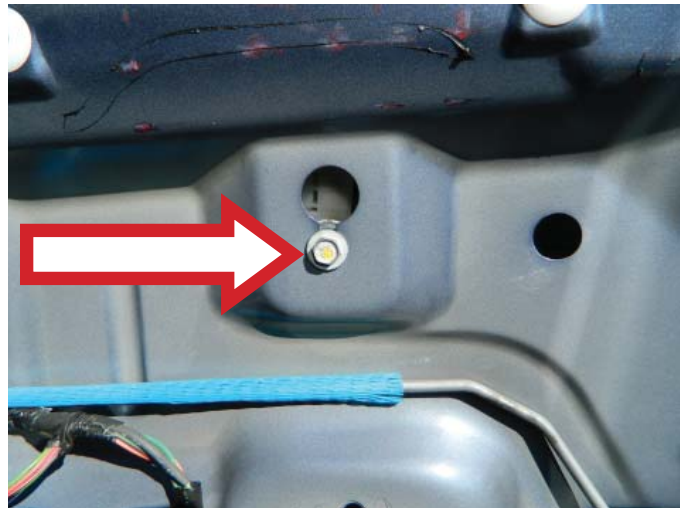
Installation Instructions

STEP 1: Place the window regulator through the access hole.

STEP 2: Loosely mount the bottom of the window regulator into position.



STEP 3: Loosely mount the top of the window regulator into position.



STEP 4: Once the window regulator has been put into position, tighten the window regulator attaching bolts.

STEP 4a: Connect the window lift motor connector.

STEP 5: Manually slide the window glass down to attach to the window regulator.

NOTE: It may be necessary to temporarily connect the master power switch assembly to raise or lower the window regulator lift plate.

INSTALL/REMOVAL INSTRUCTIONS: WINDOW REGULATOR

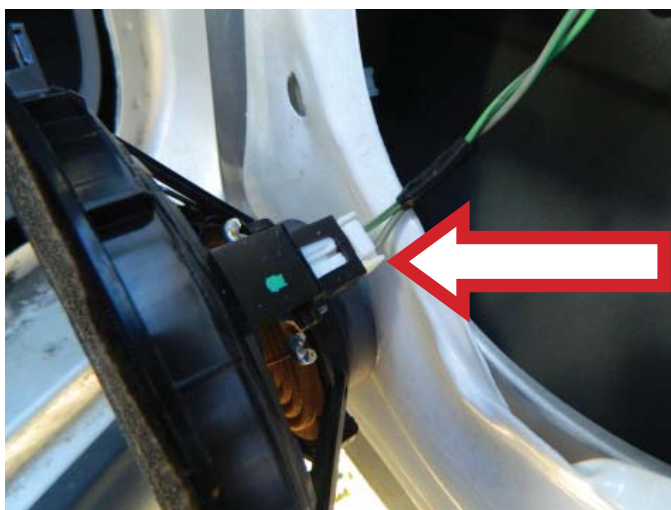
ATTENTION: Refer to the appropriate shop manual for your vehicle to obtain specific service procedures for this part. If you do not have a service manual or lack the skill to install this part, it is recommended that you seek the services of a qualified technician. Pay special attention to all cautions and warnings included in the shop manual. Read and follow all instructions carefully.

STEP 6: Install the water vapor barrier.

NOTE: Be sure to slide the interior door latch rod through the water vapor barrier.



STEP 7: Connect the door speaker.



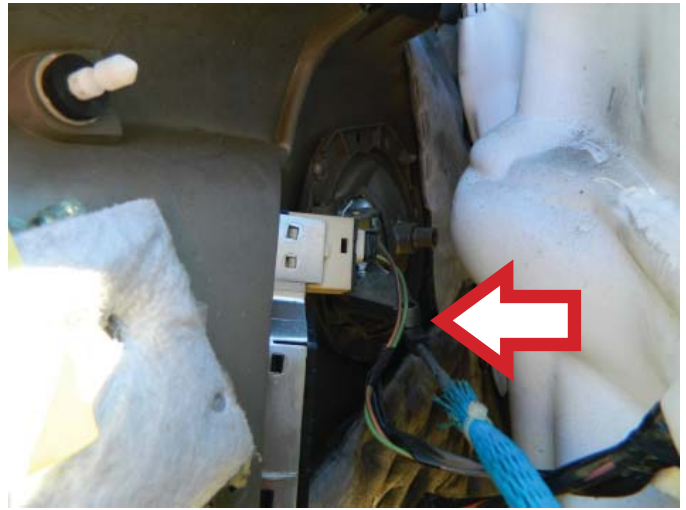
STEP 7a: Attach the three (3) door speaker attaching screws.



INSTALL/REMOVAL INSTRUCTIONS: WINDOW REGULATOR

ATTENTION: Refer to the appropriate shop manual for your vehicle to obtain specific service procedures for this part. If you do not have a service manual or lack the skill to install this part, it is recommended that you seek the services of a qualified technician. Pay special attention to all cautions and warnings included in the shop manual. Read and follow all instructions carefully.

STEP 8: Attach the interior door latch rod to the interior door handle.



STEP 9: Connect the power door lock switch.

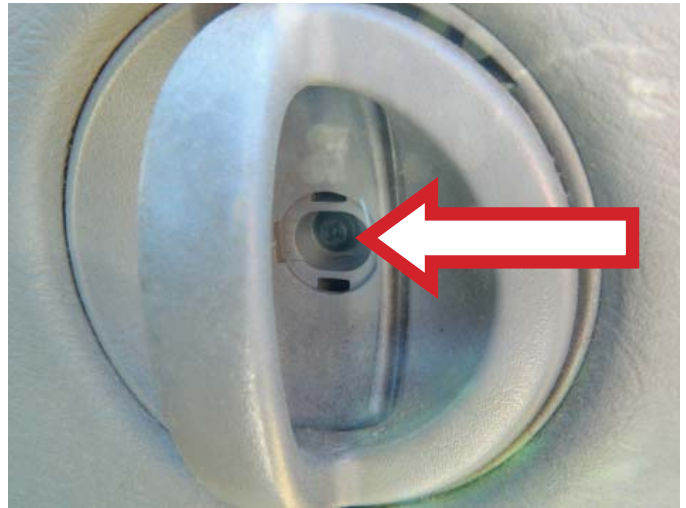


STEP 10: Install the interior door trim panel. **NOTE:** Be sure to align all of the door trim panel retainers.

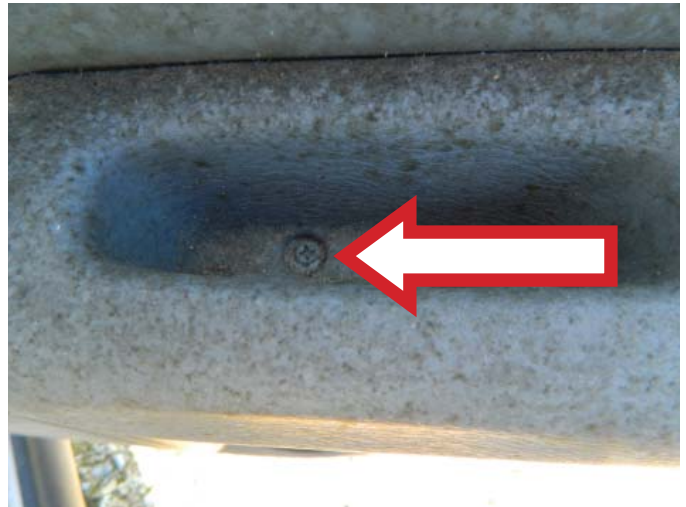
INSTALL/REMOVAL INSTRUCTIONS: WINDOW REGULATOR

ATTENTION: Refer to the appropriate shop manual for your vehicle to obtain specific service procedures for this part. If you do not have a service manual or lack the skill to install this part, it is recommended that you seek the services of a qualified technician. Pay special attention to all cautions and warnings included in the shop manual. Read and follow all instructions carefully.

STEP 11: Install the interior door trim panel door handle bezel retaining screw.



STEP 12: Install the interior door trim panel door pull retaining screw.



STEP 13: Verify that the interior door trim panel is securely fastened and that the window regulator operates properly.