

INSTALL/REMOVAL INSTRUCTIONS: WINDOW REGULATOR

ATTENTION: Refer to the appropriate shop manual for your vehicle to obtain specific service procedures for this part. If you do not have a service manual or lack the skill to install this part, it is recommended that you seek the services of a qualified technician. Pay special attention to all cautions and warnings included in the shop manual. Read and follow all instructions carefully.

REMOVAL/INSTALL OF WINDOW REGULATOR (741-872) Ford Expedition 1997–2002, Lincoln Navigator 1998–2002, Ford F-150 Super Crew Cab 2001

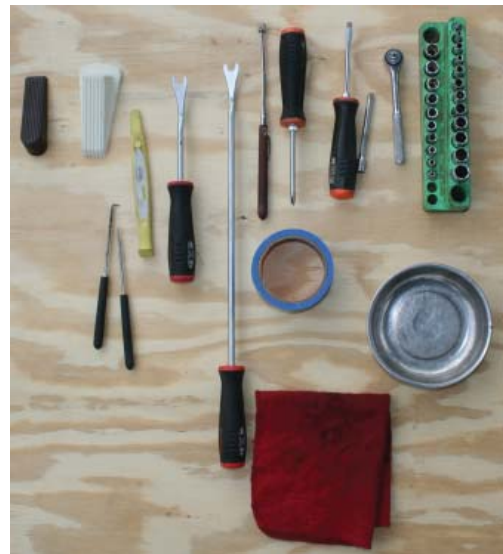
General Tech Tips:

- Use painter's tape rather than duct tape to secure window. It will not damage paint or leave sticky residue.
- A plastic pry tool is useful. It will not easily damage delicate trim like a screwdriver or metal pry bar.
- The replacement regulator should have a liberal amount of grease on slide area. If there is not much grease present, white lithium grease works well to lubricate the slide area.
- Aftermarket window tinting can cause the window to travel slower and put additional strain on the window regulator assembly.
- Window run channels should be cleaned and lubricated before installation of a new window regulator assembly. Silicone spray works well.

Tools required for removal and installation of window regulator and motor assembly:

- Silicone spray lubricant
- Trim panel removal tool
- Pick
- Saddle cup assembly, tape or wedge to hold window in place
- Flat-blade screwdriver or plastic pry tool
- 10 mm socket or driver
- Phillips screwdriver
- Grease pencil or marker
- 8 mm combination wrench and an 11 mm socket
- 1/8" drill bit, 3/8" reversible drill, pop rivet gun

PLEASE WEAR SAFETY GLASSES!



INSTALL/REMOVAL INSTRUCTIONS: WINDOW REGULATOR

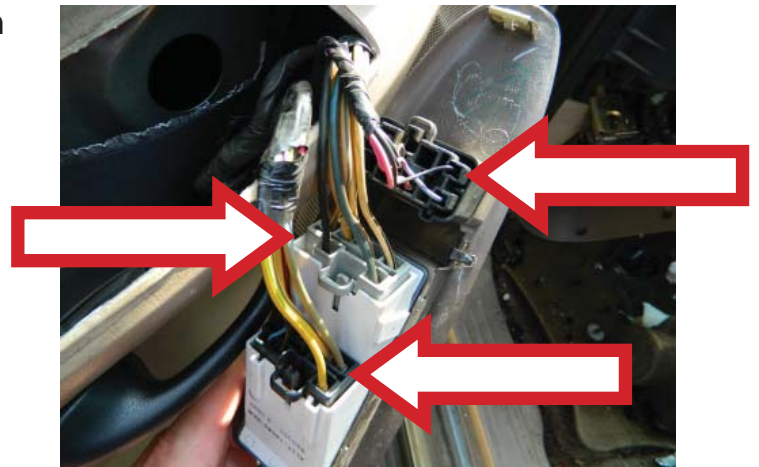
ATTENTION: Refer to the appropriate shop manual for your vehicle to obtain specific service procedures for this part. If you do not have a service manual or lack the skill to install this part, it is recommended that you seek the services of a qualified technician. Pay special attention to all cautions and warnings included in the shop manual. Read and follow all instructions carefully.

Removal Instructions

STEP 1: Using a plastic trim panel removal tool, insert between the master power switch assembly and gently pry in an upward motion.



STEP 2: Disconnect the master power switch assembly.



INSTALL/REMOVAL INSTRUCTIONS: WINDOW REGULATOR

ATTENTION: Refer to the appropriate shop manual for your vehicle to obtain specific service procedures for this part. If you do not have a service manual or lack the skill to install this part, it is recommended that you seek the services of a qualified technician. Pay special attention to all cautions and warnings included in the shop manual. Read and follow all instructions carefully.

STEP 3: Using a plastic trim panel removal tool, place the tool between the rear view mirror bezel assembly and pry in an outward motion.



STEP 3a: Using a plastic trim panel removal tool, place the tool between the interior door trim panel and the rear view mirror bezel, and pry in an upward motion.



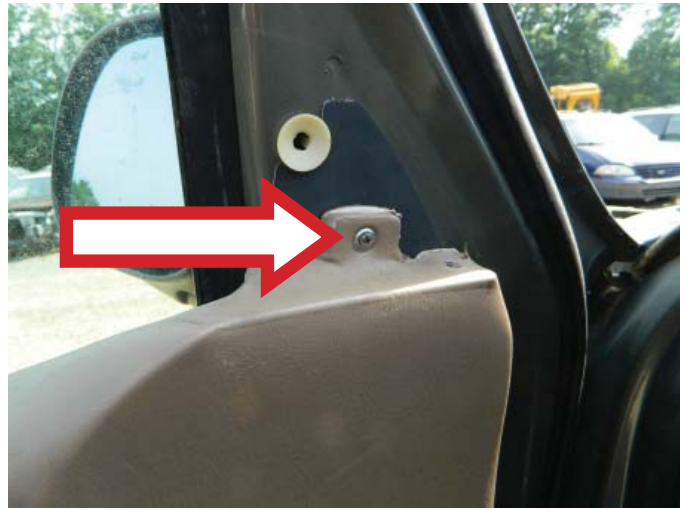
STEP 4: Remove the rear view mirror bezel assembly.



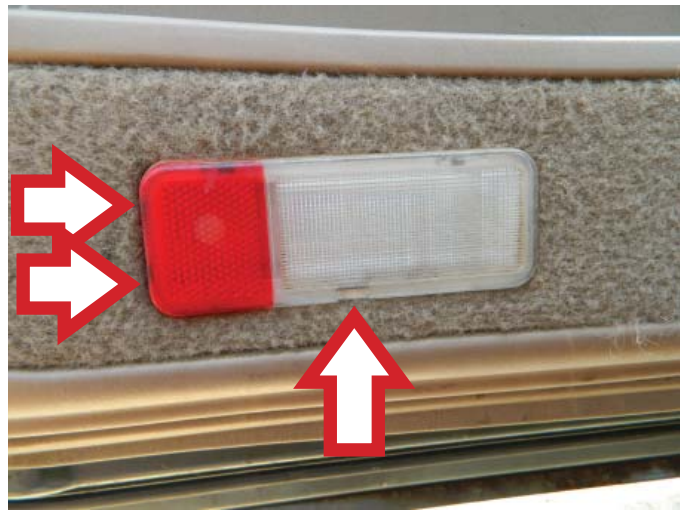
INSTALL/REMOVAL INSTRUCTIONS: WINDOW REGULATOR

ATTENTION: Refer to the appropriate shop manual for your vehicle to obtain specific service procedures for this part. If you do not have a service manual or lack the skill to install this part, it is recommended that you seek the services of a qualified technician. Pay special attention to all cautions and warnings included in the shop manual. Read and follow all instructions carefully.

STEP 5: Remove the door trim panel attaching screw.



STEP 6: Using a small flat-blade screwdriver, place the screw driver in one of the recessed grooves in the door trim panel marker light assembly.



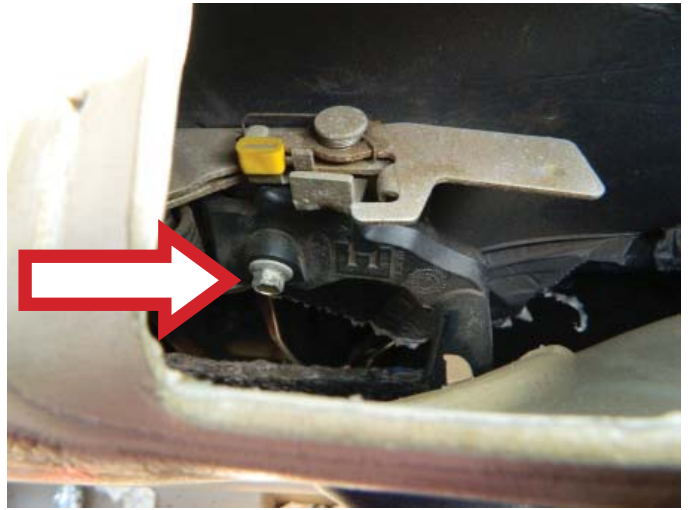
STEP 7: Remove the door trim panel marker light assembly retainer screw.



INSTALL/REMOVAL INSTRUCTIONS: WINDOW REGULATOR

ATTENTION: Refer to the appropriate shop manual for your vehicle to obtain specific service procedures for this part. If you do not have a service manual or lack the skill to install this part, it is recommended that you seek the services of a qualified technician. Pay special attention to all cautions and warnings included in the shop manual. Read and follow all instructions carefully.

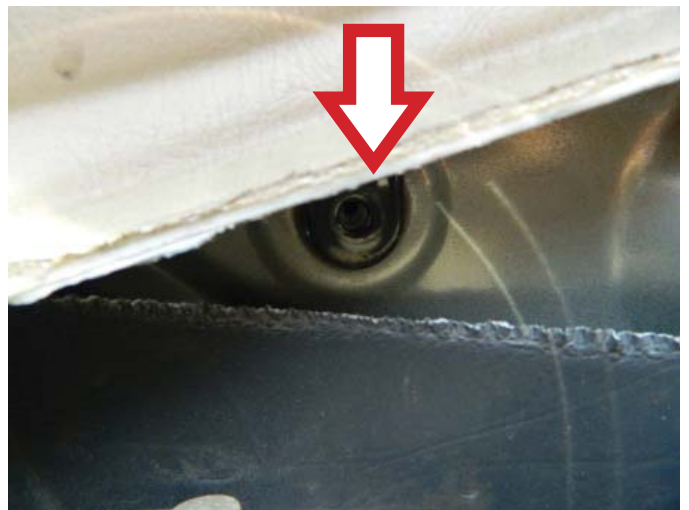
STEP 8: Using an 8 mm wrench, remove the door handle attaching bolt.



STEP 9: Remove the door handle assembly through the door trim panel opening.



STEP 10: Remove the upper interior door trim retaining screw. The screw is located just above the interior door mechanism. The screw is somewhat obscure. Failure to remove this screw will not allow you to remove the door trim panel.



INSTALL/REMOVAL INSTRUCTIONS: WINDOW REGULATOR

ATTENTION: Refer to the appropriate shop manual for your vehicle to obtain specific service procedures for this part. If you do not have a service manual or lack the skill to install this part, it is recommended that you seek the services of a qualified technician. Pay special attention to all cautions and warnings included in the shop manual. Read and follow all instructions carefully.

STEP 11: In an upward motion and pulling toward you, remove the door trim panel. Be sure not to completely remove the door trim panel, as there are still electrical connectors attached to the door trim panel.

STEP 12: If the vehicle is equipped with a power mirror, disconnect the switch from its harness.



STEP 13: Remove the door marker light socket from the door trim panel.



STEP 14: Remove the door trim panel.

INSTALL/REMOVAL INSTRUCTIONS: WINDOW REGULATOR

ATTENTION: Refer to the appropriate shop manual for your vehicle to obtain specific service procedures for this part. If you do not have a service manual or lack the skill to install this part, it is recommended that you seek the services of a qualified technician. Pay special attention to all cautions and warnings included in the shop manual. Read and follow all instructions carefully.

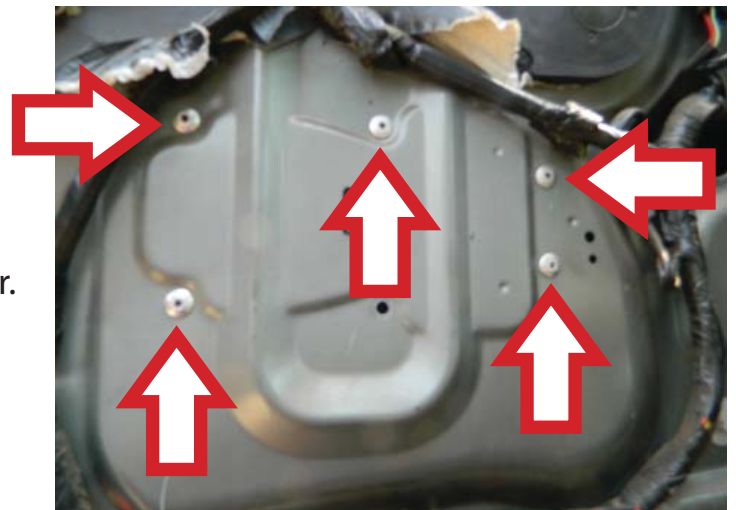
STEP 14a: Remove the water vapor barrier (if so equipped).



STEP 15: Disconnect the window lift motor connector.



STEP 16: Using an 1/8" drill bit, remove the rivets attaching the regulator onto the door.



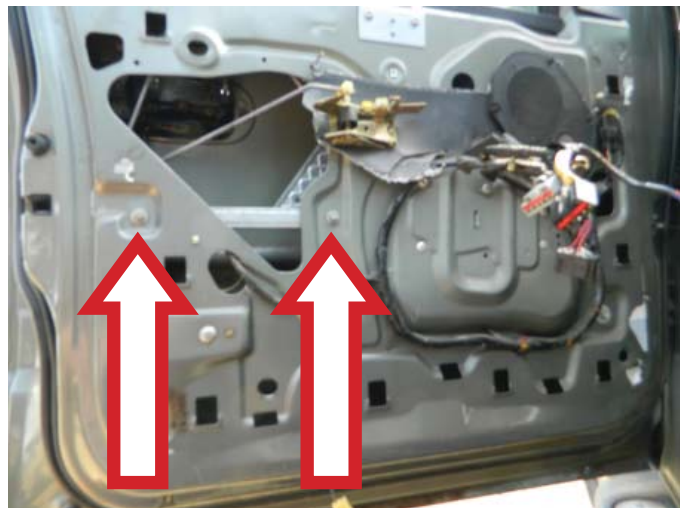
INSTALL/REMOVAL INSTRUCTIONS: WINDOW REGULATOR

ATTENTION: Refer to the appropriate shop manual for your vehicle to obtain specific service procedures for this part. If you do not have a service manual or lack the skill to install this part, it is recommended that you seek the services of a qualified technician. Pay special attention to all cautions and warnings included in the shop manual. Read and follow all instructions carefully.

STEP 17: Temporarily install the master power window switch to lower the window glass.

STEP 17a: Once the window glass is lowered into a position that you can see the attaching lift plate bolts, disconnect the bolts from the window glass lift plate and raise the glass manually into the “up” position. Once you have put the glass into the up position, use either a saddle cup assembly, painters tape, or your wedge to hold the glass into position.

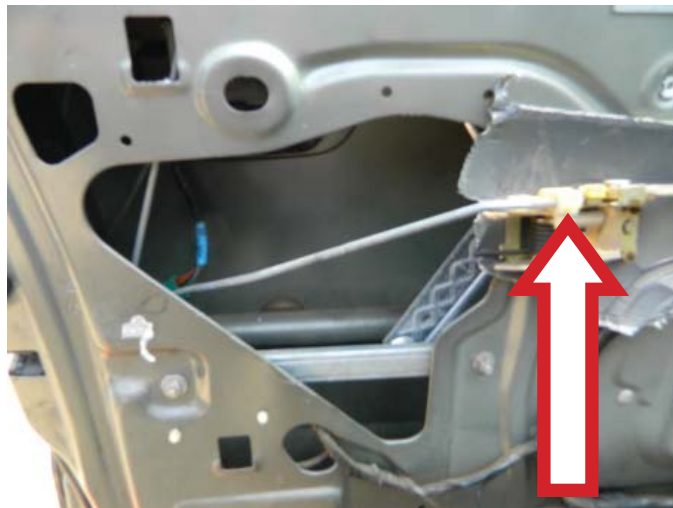
STEP 18: With the glass in a safe position, remove the remaining window regulator attaching bolts.



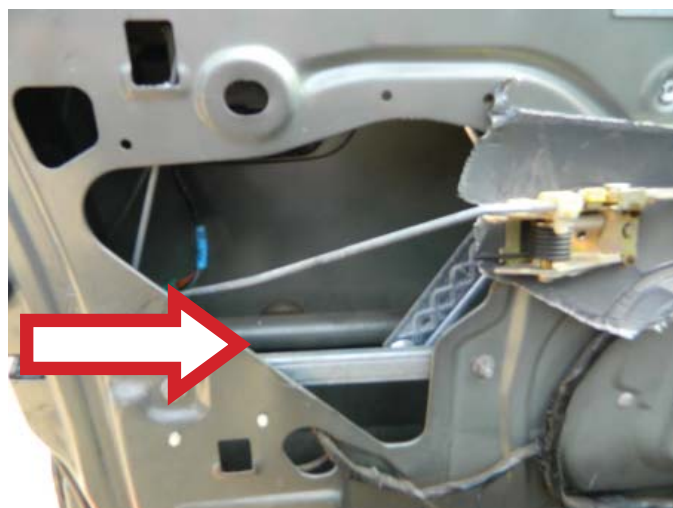
INSTALL/REMOVAL INSTRUCTIONS: WINDOW REGULATOR

ATTENTION: Refer to the appropriate shop manual for your vehicle to obtain specific service procedures for this part. If you do not have a service manual or lack the skill to install this part, it is recommended that you seek the services of a qualified technician. Pay special attention to all cautions and warnings included in the shop manual. Read and follow all instructions carefully.

STEP 19: Disconnect the door latch rod retaining clip, this will allow the rod to drop so that you can remove the window regulator assembly through the access hole.



STEP 20: Remove the window regulator assembly through the access hole.



INSTALL/REMOVAL INSTRUCTIONS: WINDOW REGULATOR

ATTENTION: Refer to the appropriate shop manual for your vehicle to obtain specific service procedures for this part. If you do not have a service manual or lack the skill to install this part, it is recommended that you seek the services of a qualified technician. Pay special attention to all cautions and warnings included in the shop manual. Read and follow all instructions carefully.

Installation Instructions

STEP 1: Install the window regulator assembly through the access hole.



STEP 2: Loosely mount the window regulator assembly.

STEP 3: Temporarily install the master power window switch and attach the window lift motor connector. This will allow you to operate the window regulator assembly. Lower the lift plate assembly into position so that you can attach the window glass.

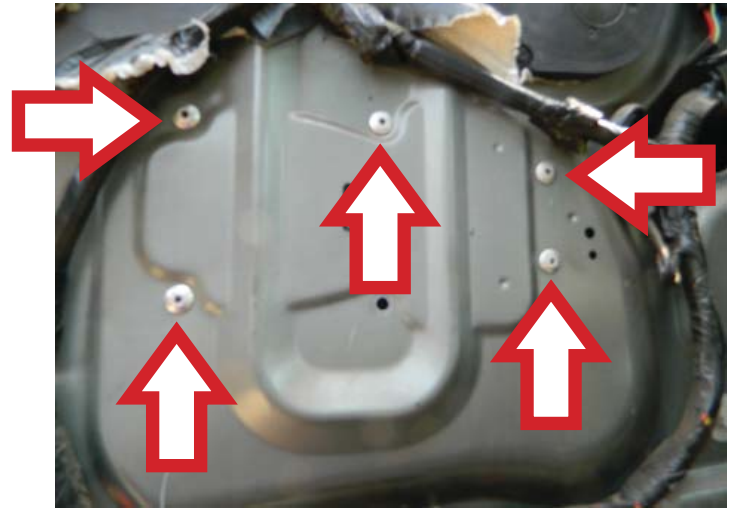
STEP 4: Attach the window glass to the window regulator lift plate assembly.

STEP 5: Tighten down the window regulator attaching bolts to verify that the window glass moves smoothly without any binding or chattering.

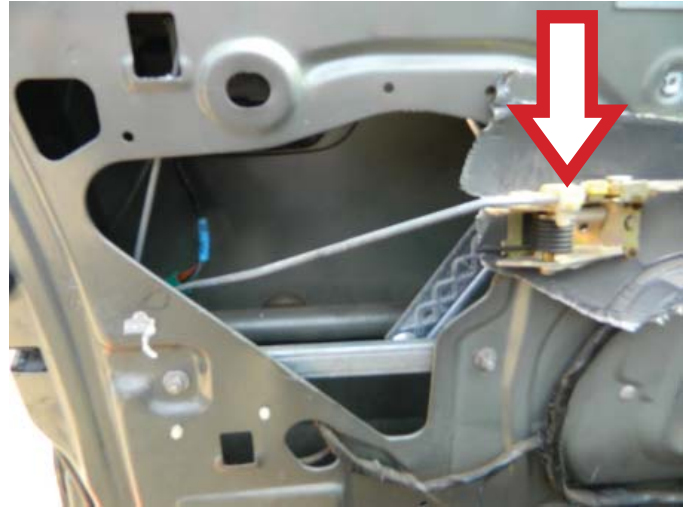
INSTALL/REMOVAL INSTRUCTIONS: WINDOW REGULATOR

ATTENTION: Refer to the appropriate shop manual for your vehicle to obtain specific service procedures for this part. If you do not have a service manual or lack the skill to install this part, it is recommended that you seek the services of a qualified technician. Pay special attention to all cautions and warnings included in the shop manual. Read and follow all instructions carefully.

STEP 6: Once it has been verified that the window regulator and motor is working properly, use pop rivets to fasten the window regulator into position.



STEP 7: Re-attach the interior door handle latch rod and clip.



STEP 8: If vehicle was equipped, re-install water vapor barrier.

STEP 9: Connect the power mirror to the back side of the door trim panel.

STEP 10: Connect the door trim panel marker light assembly on the back side of the door trim panel.

INSTALL/REMOVAL INSTRUCTIONS: WINDOW REGULATOR

ATTENTION: Refer to the appropriate shop manual for your vehicle to obtain specific service procedures for this part. If you do not have a service manual or lack the skill to install this part, it is recommended that you seek the services of a qualified technician. Pay special attention to all cautions and warnings included in the shop manual. Read and follow all instructions carefully.

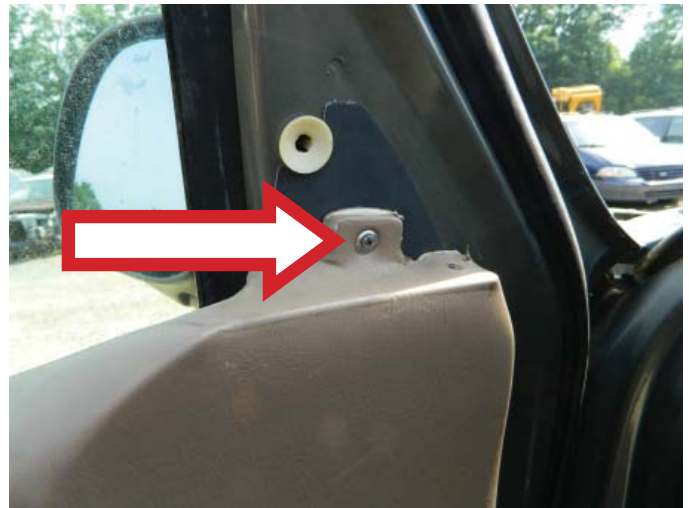
STEP 10a: Make sure that the wiring for the master power switch assembly goes through the hole in the door panel.



STEP 11: Align the door trim panel with its corresponding retainer holes.

STEP 12: In a downward motion slide the door trim panel over the lip on the door, while paying attention to the alignment of the pins on the back of the door panel.

STEP 13: Install the door trim panel attaching screw.



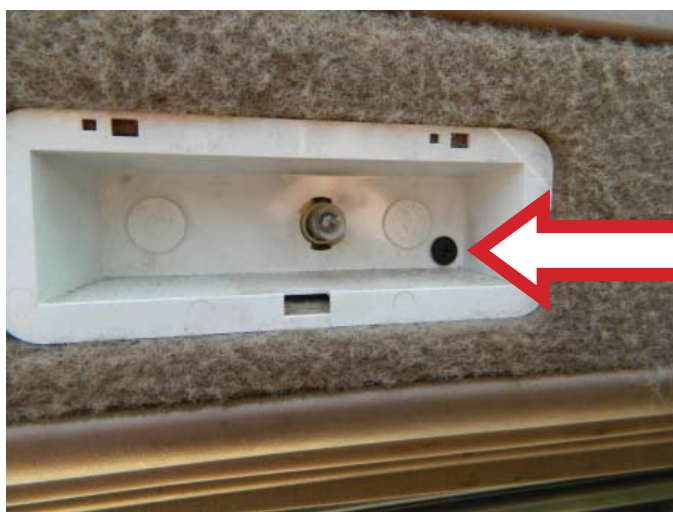
INSTALL/REMOVAL INSTRUCTIONS: WINDOW REGULATOR

ATTENTION: Refer to the appropriate shop manual for your vehicle to obtain specific service procedures for this part. If you do not have a service manual or lack the skill to install this part, it is recommended that you seek the services of a qualified technician. Pay special attention to all cautions and warnings included in the shop manual. Read and follow all instructions carefully.

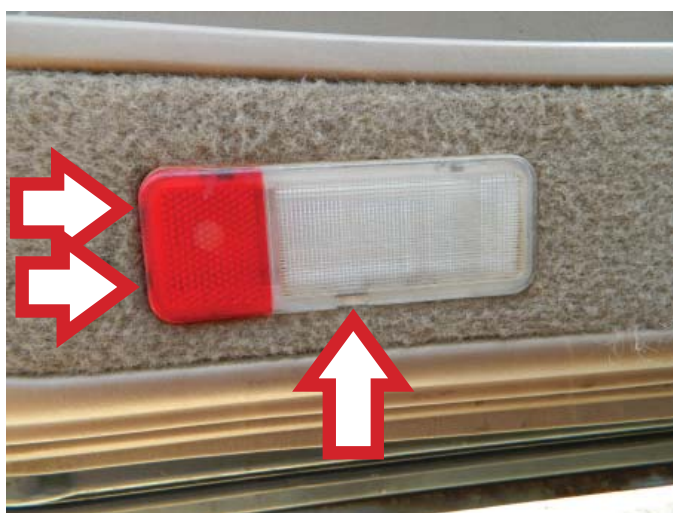
STEP 14: Install the upper door trim panel retaining screw.



STEP 15: Install the door marker light assembly retaining screw.



STEP 16: Install the door marker light assembly.



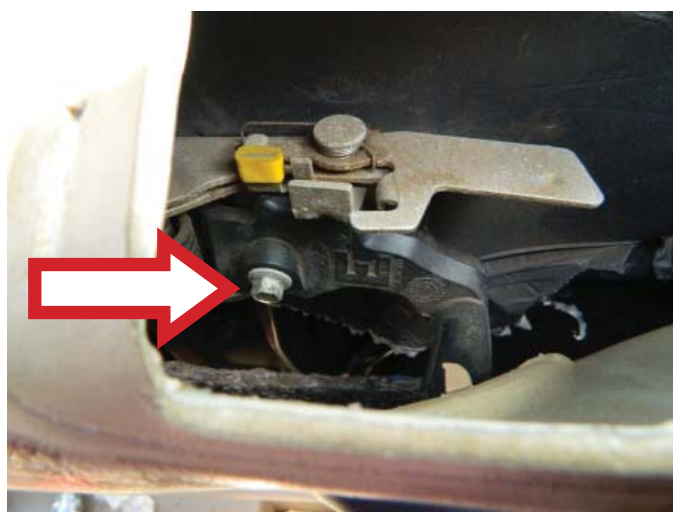
INSTALL/REMOVAL INSTRUCTIONS: WINDOW REGULATOR

ATTENTION: Refer to the appropriate shop manual for your vehicle to obtain specific service procedures for this part. If you do not have a service manual or lack the skill to install this part, it is recommended that you seek the services of a qualified technician. Pay special attention to all cautions and warnings included in the shop manual. Read and follow all instructions carefully.

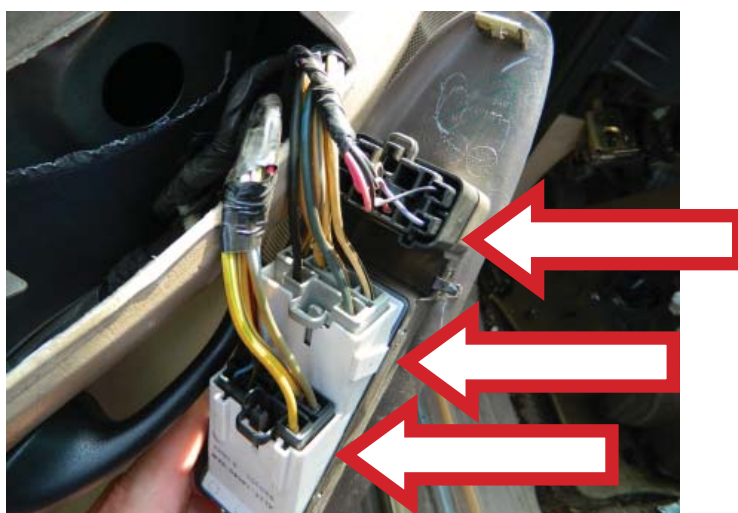
STEP 17: Slide the door handle assembly through the opening in the door trim panel.



STEP 18: Attach the door handle retaining screw.



STEP 19: Attach the master power switch wiring onto the switch assembly.



INSTALL/REMOVAL INSTRUCTIONS: WINDOW REGULATOR

ATTENTION: Refer to the appropriate shop manual for your vehicle to obtain specific service procedures for this part. If you do not have a service manual or lack the skill to install this part, it is recommended that you seek the services of a qualified technician. Pay special attention to all cautions and warnings included in the shop manual. Read and follow all instructions carefully.

STEP 20: Install the master power switch assembly.



STEP 21: Verify that the window regulator assembly and window glass are operating smoothly.