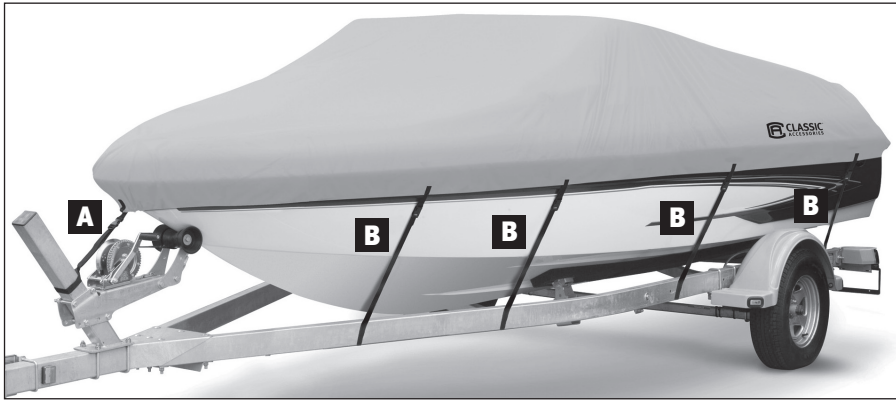


Instructions: DryGuard™ Boat Cover

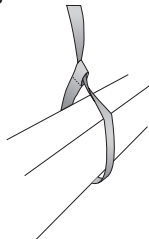


CAUTION

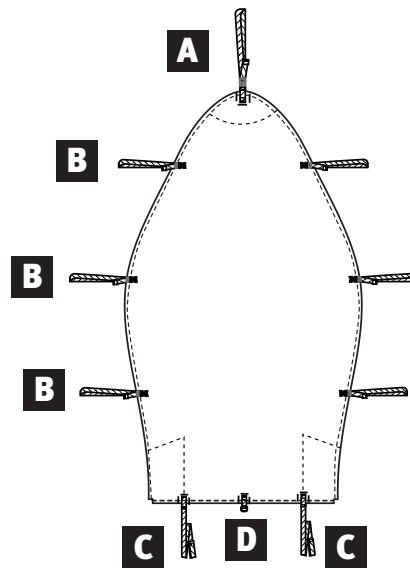
If your boat is new, use of this product is not recommended within the first four weeks of ownership of the boat. Some compounds used in new boats can release gases that will cause the dyes in boat covers to transfer to the boat, potentially staining the boat or its components. Boat covers can be used safely after this introductory period.

Installation

1. Cover sharp points (such as the corners of your boat's windshield) with cloth or a sponge to avoid stressing or tearing your boat cover.
2. Drape your cover over your boat with the tapered end that has the label marked "FRONT" at the bow.
3. Pull your cover below the rub rail around the entire boat.
4. Your cover includes quick-release straps that secure your cover to your boat. The side and bow straps are sewn to the cover and the stern straps are free and need to be attached to the cover with the buckles. Also included is a "D" ring [D] near the motor area of the cover. This "D" ring can be used as an additional tie-down point if necessary. Use a line or cord (not included) and tie the "D" ring to something secure on the boat or trailer.
5. Locate the two stern straps with looped ends [C]. Route the strap around a trailer beam or stationary point on your boat and



thread the clip end of the strap through the loop end of the strap (as shown in diagram) then hook the clip end of the strap into the corresponding buckle socket on the cover. Repeat with the other stern strap.



6. Locate the side straps [B]. (There are three or four straps on each side depending on your cover size.) Route the strap around a trailer beam and back up to the corresponding buckle socket on the cover. Repeat with the other side straps and the bow strap [A].

After buckling ALL of the straps, cinch all straps tight and adjust their length as necessary to get a tight fit.

Trailer

To use your DryGuard Boat Cover when trailering you MUST use all the included straps – failure to do so will invalidate your warranty.

Be sure to check that all the straps are tight and firmly attached. After driving the first mile, it is a good idea to stop and check your cover to ensure that all straps are secured correctly.

Cleaning and Care

Proper care will extend the life of your boat cover.

If your boat cover becomes dirty, it can be cleaned with lukewarm water and a soft brush. DO NOT USE SOAP—it can damage the protective coatings on your cover.

Storage

Be sure your cover is completely dry before you store it for any extended period.



CLASSIC ACCESSORIES, INC.