



# **BULLY DOG**

**#1 IN PERFORMANCE**

## **INSTALLATION MANUAL**



**Case IH 8.3L CAPS Module**

### **Applications**

MX240, 255, 270, 285

STX 275, 325

### **Rapid Power Part #**

40620

40620



**POWER**



**E FUEL-ECONOMY F ECONOMY**

## TABLE OF CONTENTS

INTRODUCTION .....	PG. 2
PARTS DESCRIPTIONS .....	PG. 3
MODULE INSTALLATION .....	PGS. 4-6
OPERATING INSTRUCTIONS .....	PG. 7
INTERNET UPDATE.....	PGS. 8-10

## INTRODUCTION

You have just purchased the most technologically advanced tractor module available for the Case IH 8.3L CAPS tractors. The Rapid Power module is the safest and longest lasting module on the market.

***This instruction set outlines how to install and operate the Rapid Power module on Case IH 8.3L CAPS tractors.*** Always remember to remove the module from the tractor before taking it in for any kind of service as the module may interfere.

Bully Dog recommends installing a pyrometer gauge to monitor exhaust gas temperature when using any product to increase horsepower.

## Product Description:

The product is made up of two different parts, the module box, and cable.



### Contents:

1. Rapid Power Module with Wiring Harness
2. Zip Ties

**THE MODULE BOX:** The module box contains the electronics that will allow your tractor to produce more horsepower. It is very important that this module is mounted away from all moving or hot parts. The box should be placed in an area protected from dirt and moisture.



**THE MODULE BOX**

**THE CABLE:** This cable allows the Rapid Power Module to connect to your tractor's engine. At the end of the wiring harness are four plugs, two male and two female plugs. These plugs will connect directly to the tractor's engine and wiring harness requiring no modification of the tractor.

### MAP SENSOR PLUGS



Female Plug

Male Plug

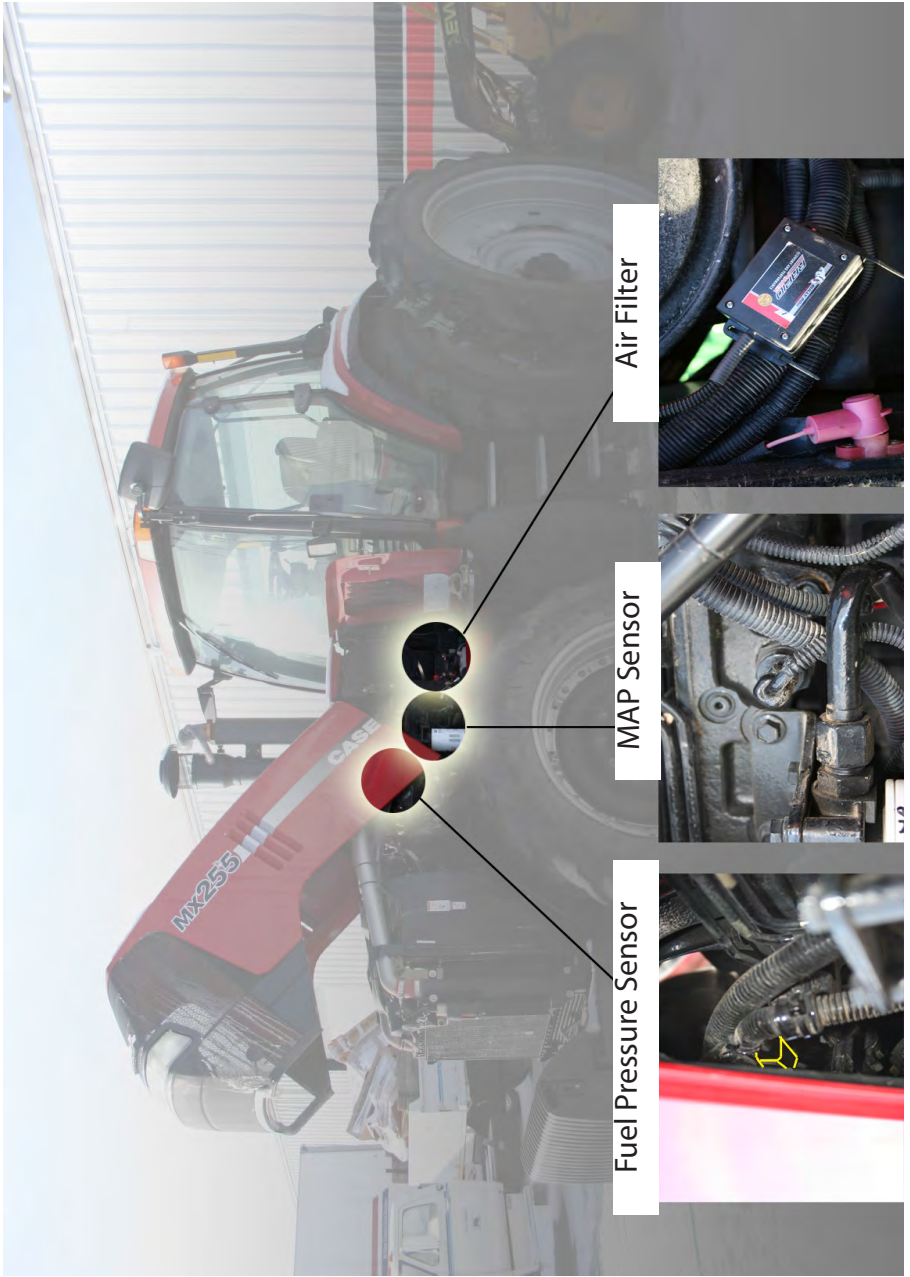
### FUEL PRESSURE SENSOR PLUGS



Female Plug

Male Plug

## PRODUCT PLACEMENT OVERVIEW:



Air Filter

MAP Sensor

Fuel Pressure Sensor

## INSTALLATION INSTRUCTIONS:

**1.** Open Hood of Tractor, install module when engine is off and cool.



**2.:** Place module below the air filter in a safe location and run cable along the wiring harness toward the MAP sensor.

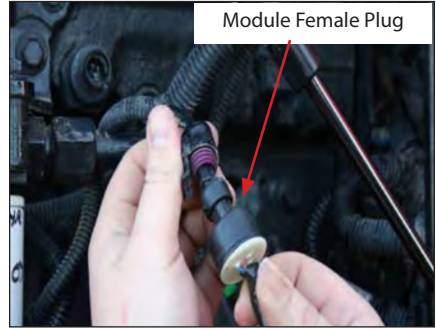


**3.** Remove plug from the MAP sensor located on the side of the engine.

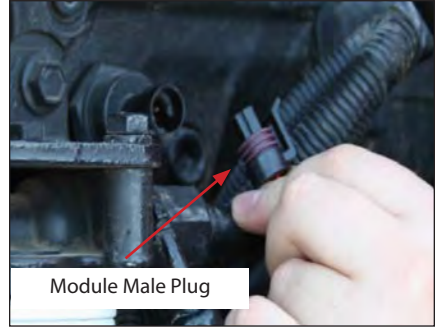


# RPM INSTALLATION

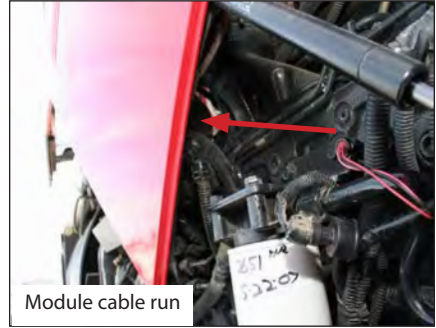
4. Plug tractor male plug into module female plug



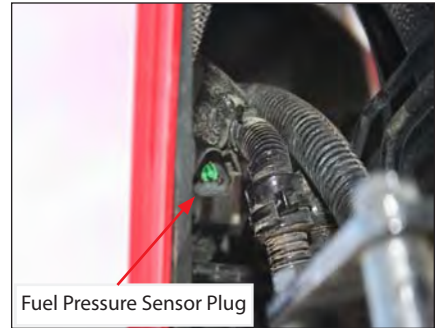
5. Plug the module male plug into the tractor MAP sensor.



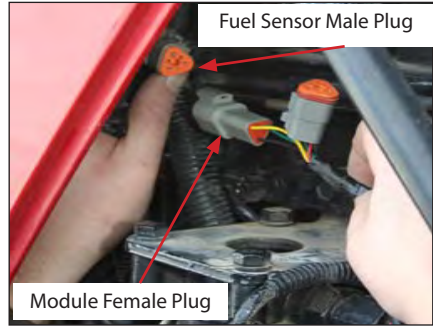
6. Continue routing module cable up to the Fuel Pressure Sensor.



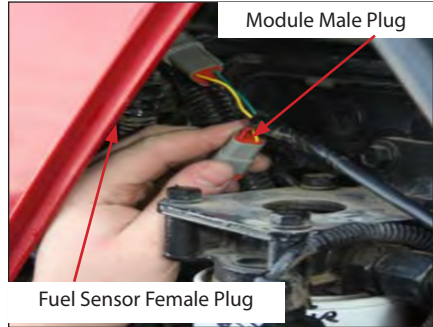
7. Disconnect the plug from the factory fuel pressure sensor.



8. Insert module female plug into fuel rail pressure sensor.



9. Connect the module male plug to the tractor female plug.



10. Use zip ties to secure the Rapid Power cable to the tractor wiring harness. Be sure the cable will be safe from moving parts (such as the starter/flywheel) or hot exhaust system parts. Zip tie the module box to the cable harness as shown.



**Warning: Do not remove module while tractor is running. Shut down machine and then remove module.**

Tractors	Stock	Low Power Level Total Horsepower	High Power Level Total Horsepower
MX 240	205 HP	~226	~246
MX 255	215 HP	~237	~258
MX 270	235 HP	~259	~282
MX 285	240 HP	~264	~288
STX 275	225 HP	~248	~270
STX 325 T	270 HP	~297	~324

This chart illustrates the approximate power increase when the Rapid Power Module is set at the desired power level. ~ Denotes an approximate value.

## OPERATING INSTRUCTIONS:

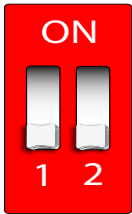
**INTERNAL POWER LEVEL SWITCH:** The Rapid Power module has three power settings, Stock, Low Power Level or High Power Level. To select different power levels remove the cover of the module box, locate the red internal power switch, and set the switch to the desired power level per illustrations below.

High Power Level

Stock

Low Power Level

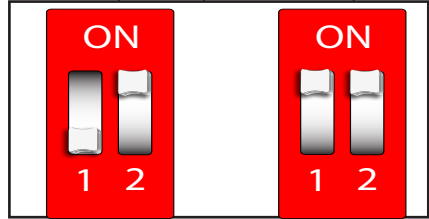
*These two positions provide the same power.*



Both switches in the "off" position indicates Stock performance



First switch in the "on" position indicates Low Power Level.



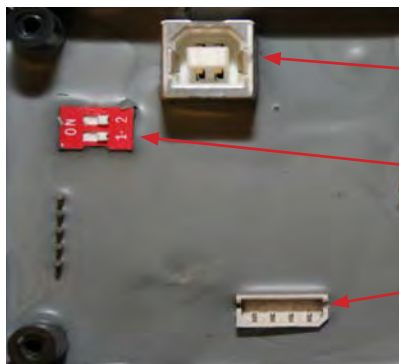
Second switch in the "on" Position indicates High Power Level.

Both switches in the "on" Position indicates High Power Level.

Be sure to securely fasten the module cover after changing the power level. Make sure the cable exits the box properly in the hole provided.

1. After completing the installation of the module, turn the tractor on to test if the module is working. If the tractor starts then the module is working. If the tractor does not start, check all of the connections on the install to be sure that they are secure and then attempt to start the tractor again.

2. Adjust performance setting to desired level and enjoy.



USB Port

Internal Power Switches

External Power Switch Plug  
(External Power Switch  
part number 40610)



## INTERNET UPGRADES/UPDATE AGENT

**IMPORTANT:** The information on this page is applicable to all vehicles and tractors.

**INTERNET UPDATE** The Rapid Power Module is internet updatable. To update remove cover from the module and insert a USB cable into the USB port. **Ensure that you have downloaded the Update Agent.** The Update Agent will automatically recognize the module and prompt you to update the module if an update is available. Simply visit Bully Dog's web site [www.bullydog.com/Download\\_Center.php](http://www.bullydog.com/Download_Center.php) to access the Download center to obtain the latest version of the Rapid Power Module.

The most efficient way of keeping up to date with Bully Dog product versions is to use the Update Agent<sup>©</sup>. The Update Agent is a software program developed by Bully Dog Technologies specifically to update Bully Dog products. The Update Agent is easy to use, it can be loaded on any windows based PC running Windows 2003 or newer. The Update Agent is attainable free of charge at the Bully Dog download center or by ordering a CD ROM through a Bully Dog distributor.



## USB Driver Installation (Windows XP only!)

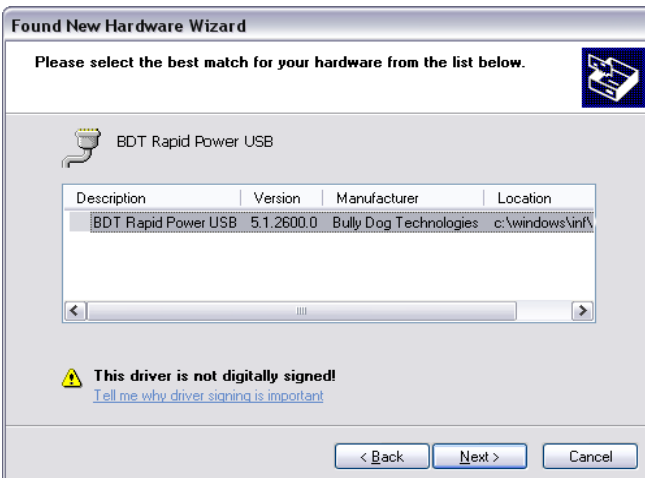
**IMPORTANT: Install the Update Agent prior to plugging in your module.**

Your computer will not recognize the Module until the Driver is installed.

- 1) Remove cover from Rapid Power Module
- 2) Plug Module into PC using a USB cable (Male A end for PC, Male B end for Module: Same type of cable as used for most printers)
- 3) Windows will recognize the Module and attempt to install software.
- 4) If Windows asks if it can connect to Windows Update to search for the software select NO, not at this time. Select Next to continue.
- 5) Select Install Automatically, then press next.



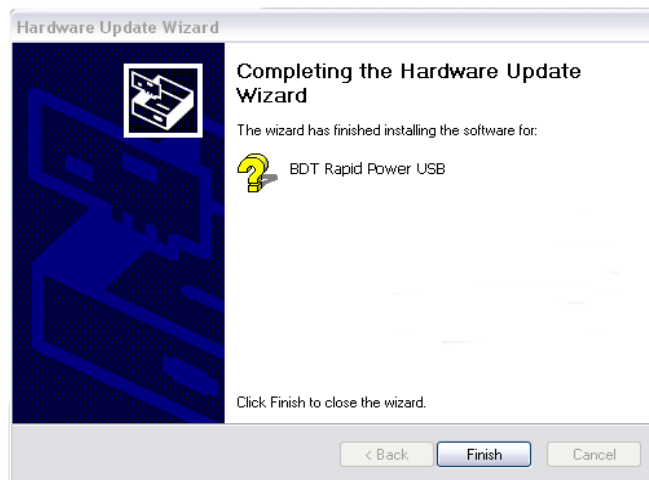
- 6) Windows will ask you to select the software you would like to install. Select BDT Rapid Power USB and select next.



7) Windows will warn that this driver is not signed, but select continue anyway!



8) Allow the driver installation to complete and click FINISH



9) The Update Agent should now recognize the device and allow the update to take place. This could take approximately 30 Seconds or more