



**BAK**<sup>®</sup>

truck bed covers

EXPECT

MORE.





**ABOUT BAK:** At BAK Industries, we believe that just because a truck is used for work, doesn't mean it needs to look like a work truck. It is possible to elegantly craft strong, rugged products while maintaining a clean look of sophistication and style. We developed a line of tonneau cover products that help maintain the functionality and appearance of your truck, and take pride in the ability to exceed expectations through their performance.

We are confident that within our product line-up there is a cover for everyone. Lifestyles vary, and we've worked diligently to develop truck accessories that cater to all of them. Enhance your truck's capabilities and extend its performance with a tonneau cover by BAK Industries.

# TABLE OF CONTENTS

- REVOLVER X2:** Hard Rolling Cover..... **3**
- REVOLVER X4:** Premium Matte Hard Folding Cover ..... **5**
- BAKFLIP G2:** Aluminum Hard Folding Cover ..... **7**
- BAKFLIP MX4:** Matte Black Hard Folding Cover ..... **9**
- BAKFLIP FIBERMAX:** Composite Hard Folding Cover ..... **11**
- BAKFLIP F1:** Premium Hard Folding Cover..... **13**
- BAKFLIP CS** Contractor Series ..... **15**
- CS/F1:** Contractor Series ..... **17**
- BAKBOX2:** Fold Away Utility Box ..... **19**
- MARKETING MATERIALS:** Displays, Literature & Banners..... **21-22**
- RACK ACCESSORIES:** Bikes, Skis & Kayaks ..... **22**

BAKflip COMPARISON CHART	G2		MX4		FIBER MAX		F1		CS		CS/F1	
	ALL ALUMINUM SERIES		FRP FIBERGLASS SERIES		CONTRACTOR SERIES							
	STANDARD	PREMIUM	STANDARD	PREMIUM	STANDARD	PREMIUM	STANDARD	PREMIUM	STANDARD	PREMIUM	STANDARD	PREMIUM
<b>PANEL TOP SKIN</b>												
Aluminum Skin	■	■					■		■			
FRP Fiberglass Skin					■	■		■				■
Dent & Ding Resistant					■	■		■	■			■
Scratch & Scuff Resistant		■			■	■		■				■
Standard UV Resistance					■	■		■				■
Premium UV Resistance	■	■										
<b>PANEL FINISH</b>												
Matte - Flat Finish		■										
Semi Gloss - Powder Coat Wrinkle Finish	■								■			
High Gloss - Fiberglass Hair Cell Finish					■	■		■				■
<b>PANEL CORE</b>												
Standard Density Panel Core		■			■	■		■				■
Premium Density Panel Core			■					■				■
<b>PANEL FRAMES</b>												
Aluminum Frame Construction	■	■			■	■		■	■			■
<b>PANEL LATCHES</b>												
(3) Automatic Latching System	■	■			■	■		■	■			■
Standard Latch Housings	■				■	■		■				■
Upgraded Injection Molded Latch Housings		■						■				■
<b>PANEL ORIENTATION</b>												
3 Panels + Header Panel (5' to 5' 8" Beds)	■	■			■	■		■	■			■
4 or More Panels + Header Panel (6' to 8' Beds)	■	■			■	■		■	■			■
<b>WEIGHT RATING</b>												
Holds 300 lbs. of Evenly Distributed Weight	■				■	■		■				■
Holds 400 lbs. of Evenly Distributed Weight		■						■	†			†
<b>HINGE STYLE</b>												
EPDM Flush Fit	■	■			■	■		■	■			■
<b>WARRANTY</b>												
3 Years	■				■	■		■	■			■
5 Years		■						■				■
<b>RAILS</b>												
Flush Fit	■	■			■	■		■	■			■
Load Bearing Flange - Self Aligning	■	■			■	■		■	■			■
<b>SAFETY EQUIPMENT</b>												
FMVSS 108 Compliant (0)	■	■			■	■		■	■			■
CHMSL/Center High Mount Safety Light Visibility (0)	■	■			■	■		■	■			■
<b>ACCESSORIES</b>												
Works with BAKBox2	■	■			■	■		■	■			■
Complete Access to Stake Pocket Holes	■	■			■	■		■	■			■
SwingCase	■	■			■	■		■	■			■

(0) = All 5' to 6' 9" Bed Sizes

† = 500 lbs. Rack Capacity

BAKFLIP BASICS



# REVOLVERX2

HARD ROLLING COVER

The BAK *Revolver X2*, featuring exclusive automatic rotational locking rails that secure the cover the entire length of the bed on each side. This hard rolling aluminum cover easily rolls up with one-handed operation and allows use of every inch of the truck bed without blocking your rear window. This cover does it all with unrivaled strength, security and style.

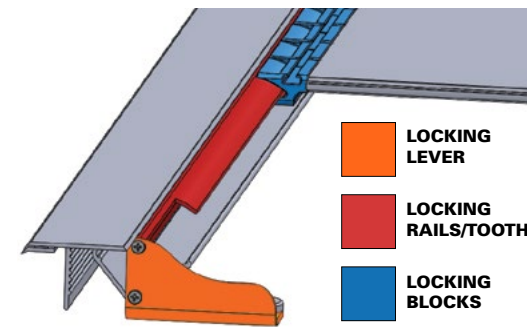
- Patented locking rails
- Easy to use automatic latching system
- No lifting with easy one-handed rolling design
- Easy clamp-on installation
- No hook and loop closure
- 100% bed access
- Tough security
- Full access to stake pocket holes for accessories
- BAKBox2 compatible
- **NEW** 3-year warranty



NO STITCHING FOR ADDED SECURITY

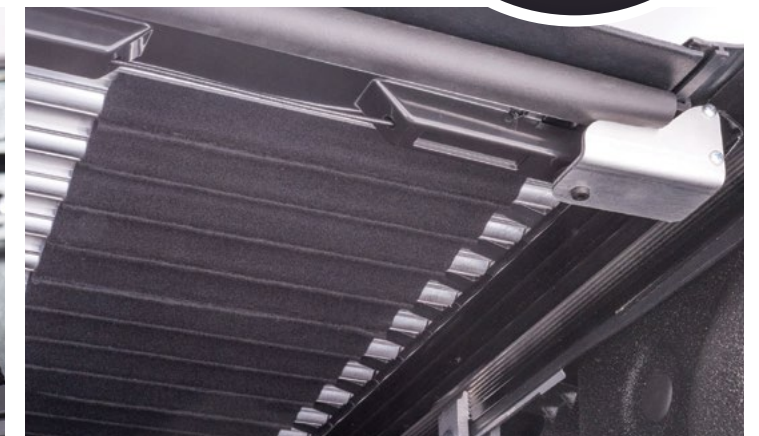
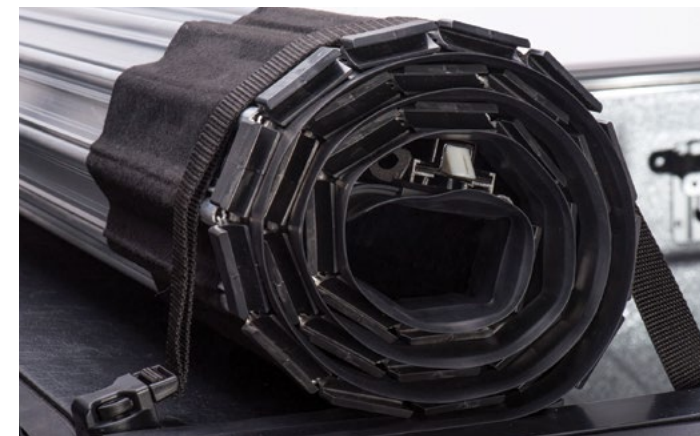
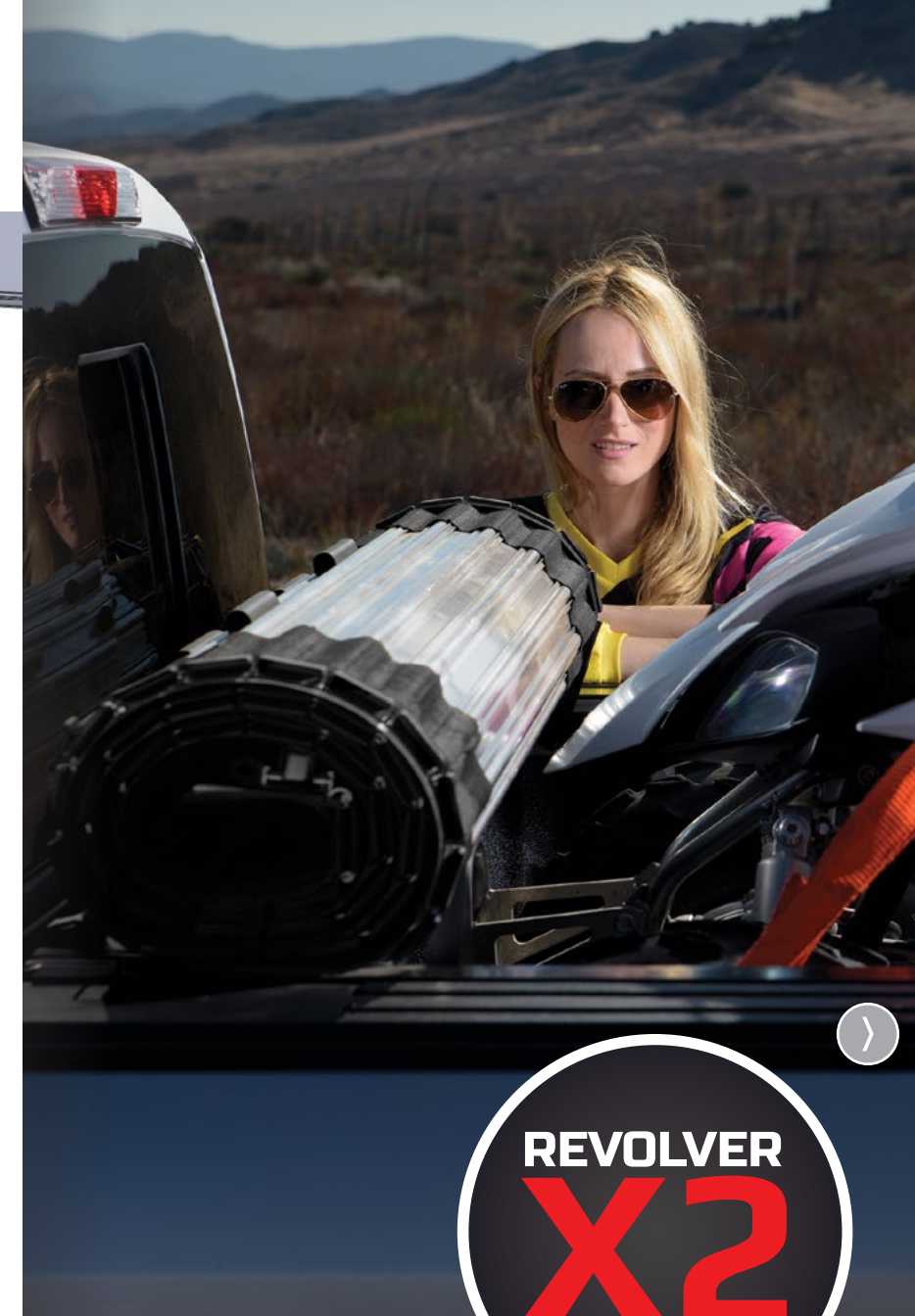
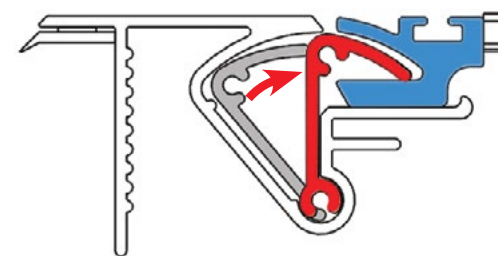
## REVOLVER: HOW IT WORKS

### LOCKING RAILS



### UNRIVALED SECURITY!

Both *Revolvers* come equipped with 3/4" Patented Rotational Locking Rails that lock the cover securely the entire length of the truck bed when latched. The 3/4" locking rail or "tooth" rotates into composite locking blocks inserted into each aluminum slat. The cover secures automatically when the spring loaded locking levers are engaged as the roll top is closed. Now the locking rail and blocks are **2X** larger, providing extreme security, easier installation and superior off-highway performance. Heavy-duty locking levers are now **3X** thicker with reinforced gussets for added strength and are engineered to lock with no adjustment necessary.



100% BED ACCESS WITH REAR WINDOW VISIBILITY HEAVY DUTY STRONG ALUMINUM CONSTRUCTION



# REVOLVER X4

PREMIUM MATTE HARD ROLLING COVER

The **BAK Revolver X4**, features the same great features of the Revolver X2, but with a stylish, matte black finish. It's heavy-duty aluminum panels are topped with an industrial-grade, matte finished vinyl, accompanied by new matte finish rails and seals that match the factory bed rail caps of your truck.

When closed, the patented rotational locking system secures the cover the full length of the bed on both sides, providing unrivaled strength and security. When opened, the cover rolls up tight providing full bed access without blocking the rear view mirror or interfering with third brake light visibility.

- Matte finish, industrial-grade vinyl
- Matte finish seals & side rail extrusions
- Easy, no-drill clamp-on installation
- BAKBox2 compatible
- **NEW** premium 5-year warranty



**WHY UPGRADE?** The RX4 is constructed of heavy-duty aluminum panels. When latched, the  $\frac{3}{4}$ " patented rotational locking rails secure the cover the entire length of the truck bed. Heavy-duty locking levers are now 3X thicker than the RX2 with reinforced gussets for added strength that lock with no adjustment necessary.

AMERICA'S #1 HARD ROLLING COVER

REVOLVER  
X4



NO-PROFILE DESIGN THAT OPENS AND CLOSSES WITH ONE HAND OPERATION



100% BED ACCESS



LATCHING IS AUTOMATIC WHEN COVER IS CLOSED FOR THE ULTIMATE IN SECURITY



EASY INSTALLATION WITH OUR SELF LEVELING LOAD BEARING SIDE RAILS



# BAKFlip<sup>G2</sup>

ALUMINUM HARD FOLDING COVER

The **BAKFlip G2**, is the smartest investment when you need full bed access and maximum cargo protection. The buckle system allows you to drive with your cover folded, flipped up or closed. Our concealed system allows you to secure the contents of your truck bed by simply locking the tailgate.

- **NEW** dual action tailgate seal
- 100% bed access
- Durable, solid-core panels with aluminum skins
- Sleek, low profile design
- High gloss finish
- Automatic latching panels
- 3rd brake light visibility
- Rated up to 300 lbs. of evenly distributed weight
- BAKBox2 compatible
- **NEW** 3-year warranty



**STANDARD ALUMINUM SERIES**

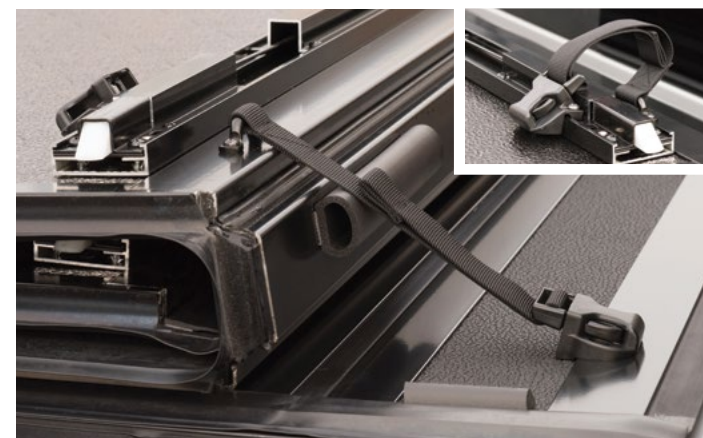
**G2**



DUAL ACTION TAILGATE SEAL



100% BED ACCESS



BUCKLES SECURE COVER IN FOLDED POSITION



BAKFLIPS WORK GREAT WITH BAKBOX2 (PAGE 19)



# BAKflip

PREMIUM MATTE HARD FOLDING COVER

MX4

EXPECT  
MORE

America's #1 selling hard folding cover, the **BAKflip MX4**, has new, reimagined features including matte-finished corner caps, rail-end caps, clamps, and elevator bolts for an even more refined look and feel. Other MX4 features include an enhanced functionality with pre-molded and die-cut, shock-absorbent bumpers and prop rod clips.

**BAKflip MX4** has all the features of the G2 **PLUS**:

- Premium matte finish
- Rated up to 400 lbs. of evenly distributed weight
- BAKBox2 compatible
- **NEW** finished corner caps
- **NEW** rail end caps
- **NEW** prop rod clips
- **NEW** matte-finished elevator bolts and clamps
- **NEW** premium 5-year warranty

**WHY UPGRADE?** This heavy-duty, all-season truck bed cover is designed to perform in the most extreme conditions. The MX4's resilient infrastructure is designed for everyday use, with upgraded components that provide enhanced resistance to the elements without compromising its sleek, low-profile look and feel. The MX4's solid and robust design is flush mount, and backed by a **NEW** premium 5-year warranty.

PREMIUM ALUMINUM SERIES

MX4



NO-PROFILE, MATTE FINISH PANELS



NEW CORNER CAPS PROVIDE FINISHED APPEARANCE



ACCESS RELEASE CABLES ON EITHER SIDE



BUCKLE SYSTEM SECURES COVER IN FOLDED POSITION



FIBER  
MAX

# BAKFlip

COMPOSITE HARD FOLDING COVER

The **BAKFlip FiberMax** includes all of the features of a standard aluminum BAKFlip, with an FRP (Fiberglass Reinforced Polymer) surface that is dent, scuff and ding resistant, as well as cooler to the touch. Its tough aluminum substructure, robust hinge design and patented slam latch system make the FiberMax an easy-to-use, dependable cover that is built to last.

- FRP (Fiberglass Reinforced Polymer) panel top skin
- Patented rail design with load-bearing flange
- EPDM outer rail seals to protect against the elements
- UV resistant for long-term durability
- 100% bed access
- Rated up to 300 lbs. of evenly distributed weight
- BAKBox2 compatible
- **NEW** 3-year warranty



COMPOSITE HARD FOLD

FIBER  
MAX



NO-PROFILE, HIGH-GLOSS COMPOSITE PANELS



100% BED ACCESS



BUCKLES SECURE COVER IN FOLDED POSITION



PROP RODS SECURE COVER IN FLIPPED UP POSITION



# BAKFlip <sup>F1</sup>

## PREMIUM HARD FOLDING COVER

The rich, high-gloss FRP (Fiberglass Reinforced Polymer) top surface of the **BAKFlip F1** provides superior dent, ding and scratch resistance. Heavy-duty aluminum panels line the underside, giving the cover its strength and durability. Together, these features make the F1 our top of the line BAKFlip, offering a stylish and secure cover for the long haul.

**BAKFlip F1** has all the features of the FiberMax **PLUS**:

- Advanced impact resistant construction
- Dual action tailgate seal
- Heavy-duty hardware and components
- Upgraded latch housing for long-term durability
- BAKBox2 compatible
- Rated up to 400 lbs. of evenly distributed weight
- **NEW** premium 5-year warranty



**WHY UPGRADE?** The F1's rugged design is made to perform in severe working and weather conditions. Rain, hail or snow – the F1 has you covered. Quickly and easily fold and lock the cover in the flipped up position for hauling large loads. The F1's advanced infrastructure and upgraded components provide unrivaled strength and security, and are backed by an **NEW** premium 5-year warranty.

## PREMIUM COMPOSITE COVER



UPGRADED TAILGATE OPERATION WITH DUAL ACTION SEAL



UPGRADED LATCH HOUSING IS BUILT TO LAST



PANELS LOCK AUTOMATICALLY TO SECURE CARGO



WATER RESISTANT, OEM GRADE SEALS AND HINGES



# BAKflip<sup>CS</sup>

## CONTRACTOR SERIES

The **BAKflip CS** is the combination of a hard folding aluminum tonneau cover and an integrated rack system. The ultimate solution for both storage and cargo management, the CS provides flexible loading features to accommodate a variety of options from construction materials to sporting goods. The rack uprights and crossbars can be installed or removed in minutes offering the ultimate in truck bed versatility.

- Hard folding aluminum tonneau cover with integrated contractor rack
- Rack uprights slide in the rails for multiple positions
- 500 lbs. rack capacity
- Rack installs or can be removed in minutes
- 100% bed access
- One pair of sliding tie-downs included
- 3-year warranty

*Some accessories not included. See website for more information.*



**ALUMINUM SERIES w/RACK**



PERFECT FOR WORK OR PLAY



COVER FLIPS UP TO HAUL LARGE EQUIPMENT



OPTIONAL LOAD STOPS MAKES LOADING A BREEZE



SEE ALL OPTIONAL RACK ACCESSORIES ON PAGE 22



# BAKFlip

CONTRACTOR SERIES **PRO**

CS/F1

The **BAKFlip CS/F1** offers the same flexibility and convenience of the CS, now with an FRP (Fiberglass Reinforced Polymer) high-gloss surface for increased rigidity and protection from dent and dings.

- Hard folding fiberglass cover with integrated contractor rack
- Advanced impact resistant construction
- Premium density solid EPS foam core
- Heavy-duty hardware and components
- Upgraded latch housing for long-term durability
- 3-year warranty

Some accessories not included. See website for more information.



**WHY UPGRADE?** The CS/F1 is your top choice when looking for a more durable and versatile cover and rack option. Designed for contractors, sports enthusiasts, and anyone looking to utilize a tonneau cover and rack simultaneously, the CS provides flexible loading features to accommodate a variety of cargo from utility equipment and construction materials, to sporting goods and appliances.

**COMPOSITE SERIES w/RACK**

**CS/F1**



OPTIONAL LOAD STOP (SEE PG. 26 FOR ACCESSORIES)



RACK UPRIGHTS INSTALL OR REMOVE IN MINUTES



SECURE VALUABLES OUT OF SIGHT



RACK UPRIGHTS EASILY SLIDE ALONG CARGO RAILS



# BAKBOX2

FOLD-AWAY UTILITY BOX

The **BAKBox2** is a convenient storage solution designed to work with the entire Revolver and BAKFlip series. As the most versatile toolbox on the market, the BAKBox2 can be positioned anywhere on the rails and organizes your valuables underneath your locked tonneau. Best of all, the BAKBox2 folds out of the way quickly to give you back your entire truck bed cargo space.

- Works with the entire BAKFlip series
- Convenient storage
- Folds away for full bed access
- Includes sliding tray for small items
- Box dimensions: 10" X 10" X bed width
- Sturdy clamp-on installation
- Solid core 1/2" thick FRP composite panels
- 250 lb. weight rating



**ORGANIZE YOUR CARGO**

**BAK  
BOX2**



CLEANS UP YOUR BACKSEAT AND TRUCK BED



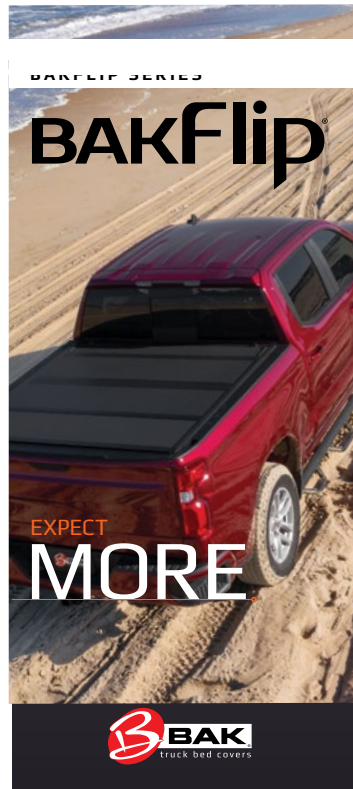
SECURES AND ORGANIZES CARGO



FOLDS AWAY FOR ADDITIONAL BED SPACE



# MARKETING MATERIALS



BAKFlip Brochure: **PBK26**



Revolver Series Brochure: **PBK39**



Application Guide: **PBK101**



Dealer Banner: **BKBANNER1**

## LITERATURE PART#

Full Catalog .....	PBK100
Application Guide.....	PBK101
BAKFlip Brochure.....	PBK26
Revolver Series Brochure.....	PBK39

# MARKETING MATERIALS

## DISPLAYS

BAKFlip MX4 .....	POP48-MX
Revolver X4 .....	POP79-X4



Revolver X4 Showroom Floor Display: **POP79-X4**



BAKFlip MX4 Showroom Floor Display: **POP48-MX**

## RACK ACCESSORIES FOR YOUR LIFESTYLE

Rack Accessories compatible with both BAKFlip CS (page 15) & BAKFlip CS/F1 (page 17)



### SKI CARRIER (4 PAIR)



PART NO: FGAT724-1

### SKI CARRIER (6 PAIR)



PART NO: FGAT725-1

### LOAD STOPS (4)



PART NO: FGAT954-1

### SLIDING TIE DOWNS



RACK PART NO: FGWR010-1  
RAIL PART NO: STR020-1

### BIKE CARRIER



PART NO: FGAT1599-1

### KAYAK CARRIER



PART NO: FGAT875-1

### D RING TIE DOWNS



For 2005-2015 Toyota Tacoma  
PART NO: 406TD

### DROP DOWN BRACKETS



For 2007-2015 Toyota Tundra  
PART NO: 410TB