



XLERATOR[®]

PERFORMANCE EXHAUST

Stainless Steel Muffler

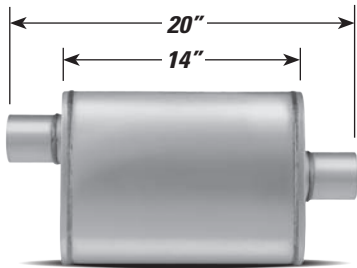


PERFORMANCE MUFFLERS

HIGH PERFORMANCE STAINLESS STEEL

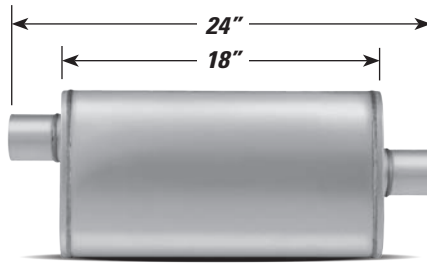
4" x 9" OVAL REVERSIBLE

OFFSET/CENTER (4" x 9")



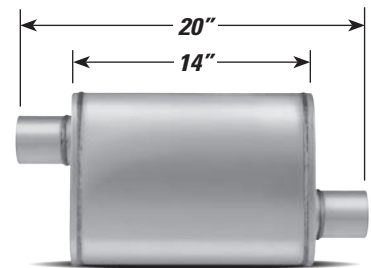
P/N	INLET	OUTLET
XS1224	2"	2"
XS1225	2 ¼"	2 ¼"
XS1226	2 ½"	2 ½"
XS1229	3"	3"

OFFSET/CENTER (4" x 9")



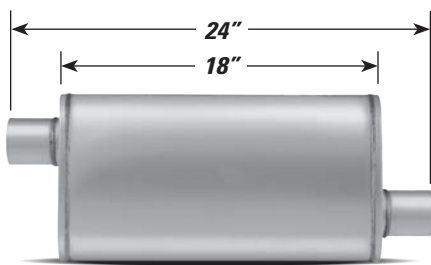
P/N	INLET	OUTLET
XS1255	2 ¼"	2 ¼"
XS1256	2 ½"	2 ½"
XS1259	3"	3"

OFFSET/OFFSET (4" x 9")



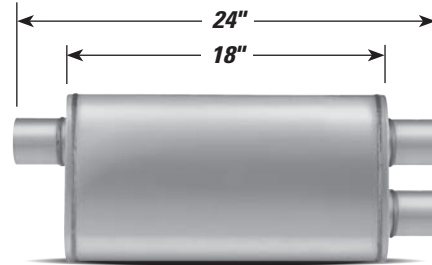
P/N	INLET	OUTLET
XS1235	2 ¼"	2 ¼"
XS1236	2 ½"	2 ½"

OFFSET/OFFSET (4" x 9")



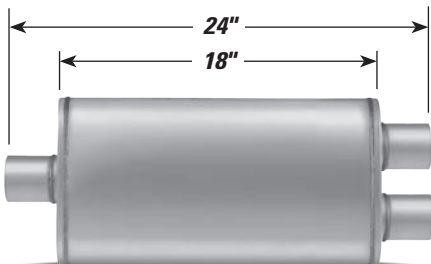
P/N	INLET	OUTLET
XS1266	2 ½"	2 ½"

TRANSVERSE & OFFSET/DUALS (4" x 9")



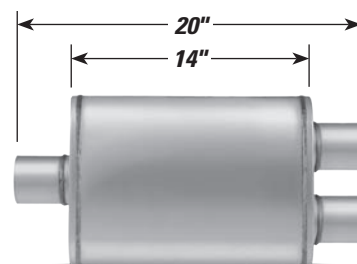
P/N	INLET	OUTLET
XS2265	2 ½"	2 ½"

CENTER/DUALS (4" x 9")



P/N	INLET	OUTLET
XS2258	2 ½"	2 ¼"
XS2268	2 ½"	2 ½"
XS2278	3"	2 ¼"
XS2288	3"	2 ½"
XS2298	3"	3"

CENTER/DUALS (4" x 9")



P/N	INLET	OUTLET
XS1149	2 ¼"	2 ¼"
XS2157	2 ½"	2 ¼"
XS2158	2 ½"	2 ½"
XS2198	3"	2 ½"

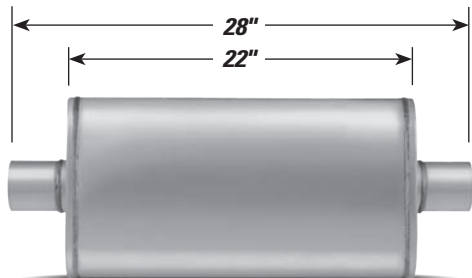
PERFORMANCE FEATURES

- Heavy gauge 100% Stainless Steel
- All welded construction
- Straight through flow design
- Increased flow
- Excellent performance sound
- Reversible
- High temperature acoustical filler material
- Better performance



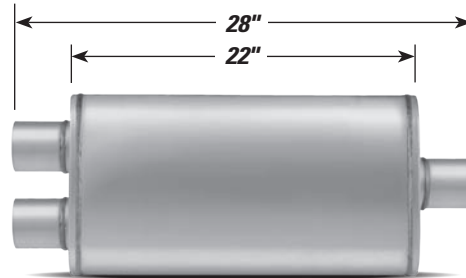
5" x 11" LARGE OVAL REVERSIBLE

CENTER/CENTER (5" x 11")



P/N	INLET	OUTLET
XS2579	3"	3"

DUALS/CENTER OR CENTER/DUALS (5" x 11")



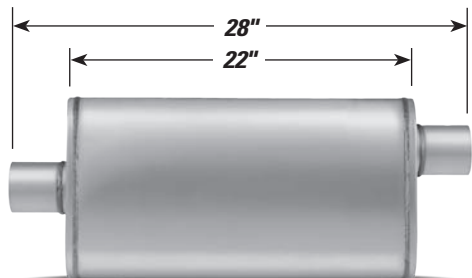
DUALS/CENTER

P/N	INLET	OUTLET
XS2588	2 ½"	3"

CENTER/DUALS

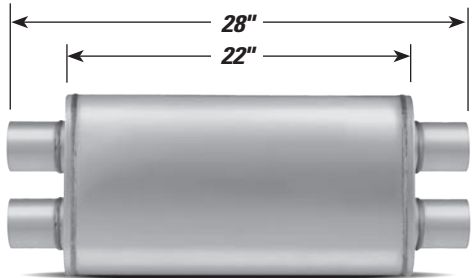
P/N	INLET	OUTLET
XS2588	3"	2 ½"

CENTER/OFFSET (5" x 11")



P/N	INLET	OUTLET
XS2589	3"	3"

DUALS/DUALS (5" x 11")



P/N	INLET	OUTLET
XS2568	2 ½"	2 ½"



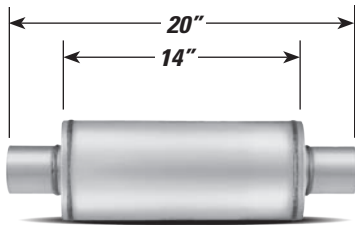
HIGH PERFORMANCE STAINLESS STEEL

PERFORMANCE FEATURES

- Heavy gauge 100% Stainless Steel
- All welded construction
- Straight through flow design
- Increased flow
- Excellent performance sound
- Reversible
- High temperature acoustical filler material
- Better performance

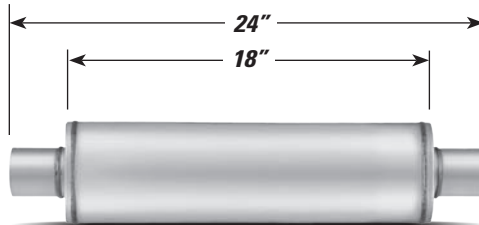
4" ROUND

CENTER/CENTER (4" Round)



P/N	INLET	OUTLET
XS0445	2 1/4"	2 1/4"
XS0416	2 1/2"	2 1/2"

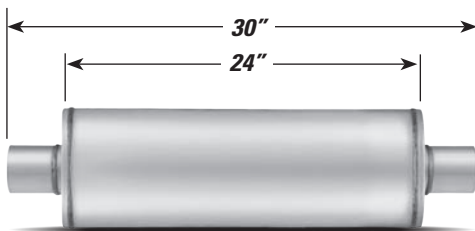
CENTER/CENTER (4" Round)



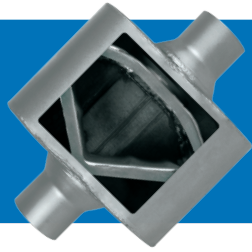
P/N	INLET	OUTLET
XS0425	2 1/4"	2 1/4"
XS0426	2 1/2"	2 1/2"

7" ROUND

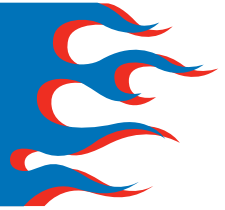
CENTER/CENTER (7" Round)



P/N	INLET	OUTLET
XS2772	4"	4"



VR SERIES RACE PERFORMANCE MUFFLERS

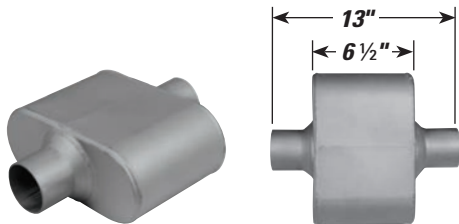


PERFORMANCE FEATURES

- V-FLOW for deep, aggressive tone
- Better performance
- Increased flow
- 100% Aluminized

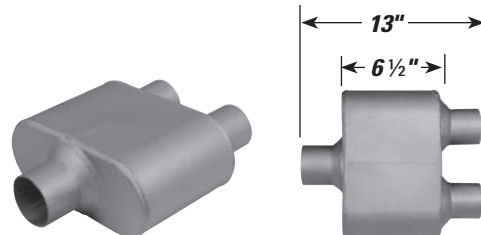
4 1/4" x 9 1/2" OVAL

CENTER/CENTER (4 1/4" x 9 1/2")



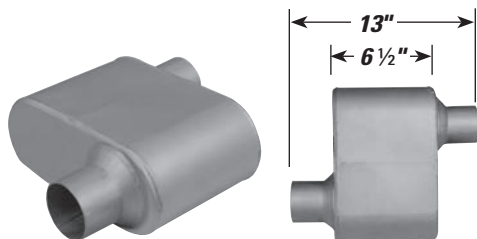
P/N	Inlet	Outlet
VR7426	2 1/2"	2 1/2"
VR7428	3"	3"

CENTER/DUALS (4 1/4" x 9 1/2")



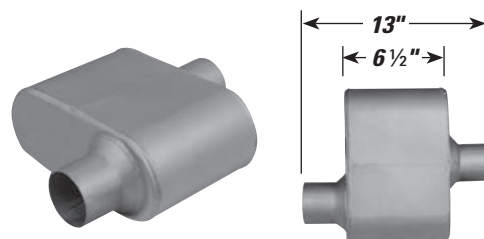
P/N	Inlet	Outlet
VR7425	2 1/2"	2 1/4" Duals
VR7427	3"	2 1/2" Duals

OFFSET/OFFSET (4 1/4" x 9 1/2")

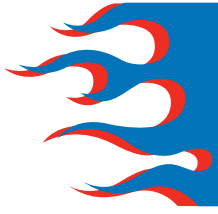


P/N	Inlet	Outlet
VR7429	2 1/4"	2 1/4"
VR7430	2 1/2"	2 1/2"

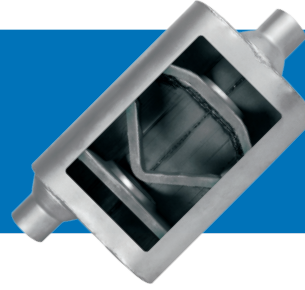
OFFSET/CENTER (4 1/4" x 9 1/2")



P/N	Inlet	Outlet
VR7431	2 1/4"	2 1/4"
VR7432	2 1/2"	2 1/2"

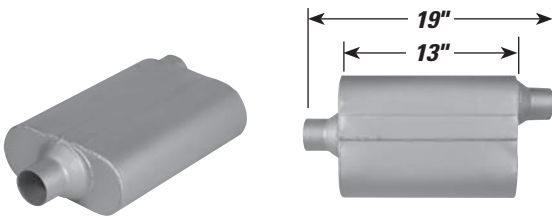


VX SERIES HIGH PERFORMANCE MUFFLERS



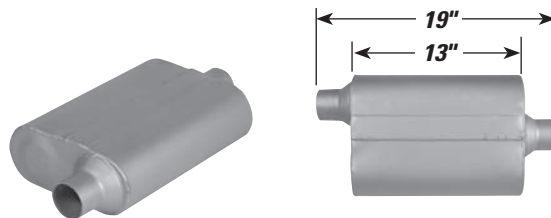
4 1/4" x 9 1/2" OVAL

CENTER/OFFSET (4 1/4" x 9 1/2")



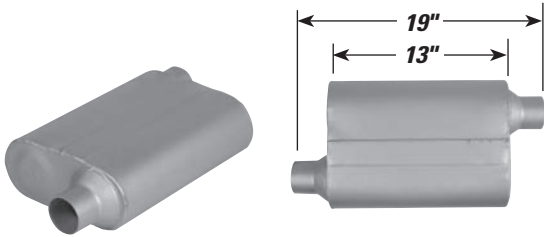
P/N	Inlet	Outlet
VX2442	2 1/4"	2 1/4"
VX2542	2 1/2"	2 1/2"
VX3042	3"	3"

OFFSET/CENTER (4 1/4" x 9 1/2")



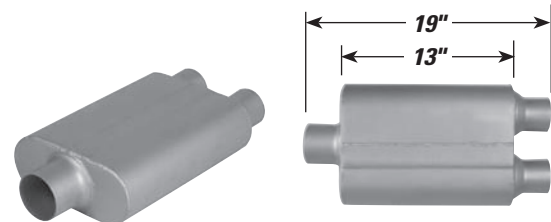
P/N	Inlet	Outlet
VX2441	2 1/4"	2 1/4"
VX2541	2 1/2"	2 1/2"
VX3041	3"	3"

OFFSET/OFFSET (4 1/4" x 9 1/2")



P/N	Inlet	Outlet
VX2443	2 1/4"	2 1/4"
VX2543	2 1/2"	2 1/2"
VX3043	3"	3"

CENTER/DUALS (4 1/4" x 9 1/2")



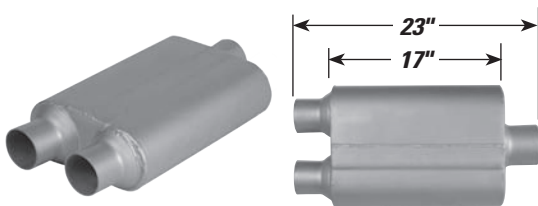
P/N	Inlet	Outlet
VX0402	3"	2 1/2" Duals
VX0422	3"	2 1/4" Duals
VX4422	2 1/4"	2 1/4" Duals
VX5400	2 1/2"	2 1/2" Duals
VX5422	2 1/2"	2 1/4" Duals

PERFORMANCE FEATURES

- V-FLOW for deep, aggressive tone
- Better performance
- Increased flow
- 100% Aluminized

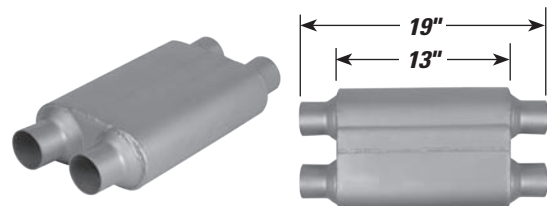
4 1/4" x 9 1/2" OVAL (Cont.)

DUALS/CENTER (4 1/4" x 9 1/2")



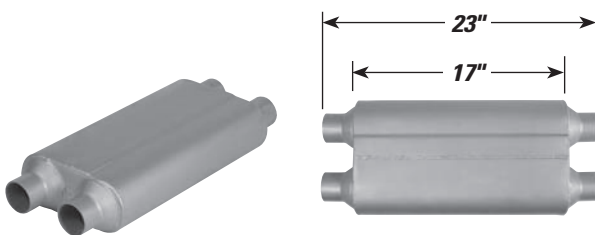
P/N	Inlet	Outlet
VX2552	2 1/2" Duals	2 1/2"

DUALS/DUALS (4 1/4" x 9 1/2")



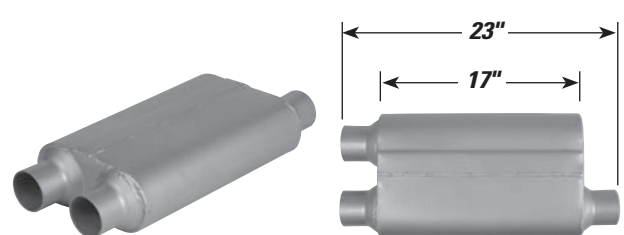
P/N	Inlet	Outlet
VX4134	2 1/4" Duals	2 1/4" Duals

DUALS/DUALS (4 1/4" x 9 1/2")



P/N	Inlet	Outlet
VX4554	2 1/4" Duals	2 1/4" Duals

TRANSVERSE (4 1/4" x 9 1/2")

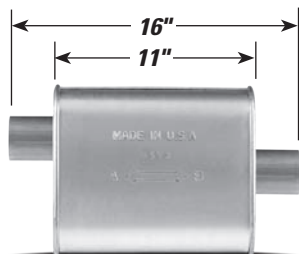


P/N	Inlet	Outlet
VX2583	2 1/2" Duals Trans	2 1/2"

BIG MAX® PERFORMANCE TURBO

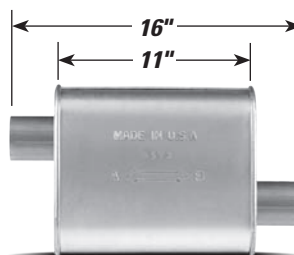
3 1/4" x 7 3/4" SMALL OVAL

OFFSET/CENTER (3 1/4" x 7 3/4")



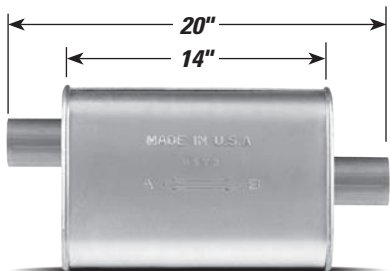
P/N	INLET	OUTLET
690008	2"	2"

OFFSET/OFFSET (3 1/4" x 7 3/4")



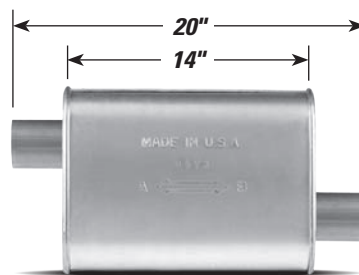
P/N	INLET	OUTLET
690003	2"	2"

OFFSET/CENTER (3 1/4" x 7 3/4")



P/N	INLET	OUTLET
6519	2"	2"

OFFSET/OFFSET (3 1/4" x 7 3/4")



P/N	INLET	OUTLET
6495	2"	2"

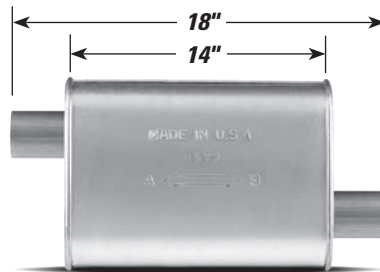
4 1/4" x 8 3/4" MEDIUM OVAL

CENTER/CENTER (4 1/4" x 8 3/4")



P/N	INLET	OUTLET
6492	2 1/4"	2 1/4"

OFFSET/OFFSET (4 1/4" x 8 3/4")



P/N	INLET	OUTLET
6497	2"	2"
6498	2 1/4"	2 1/4"
6499	2 1/2"	2 1/2"

PERFORMANCE FEATURES

- 100% Aluminized
- Better performance
- AKDDQ expandable necks
- Reduced backpressure
- Increased flow
- Excellent performance sound
- Large inner tubes
- Reversible Designs

4 1/4" x 8 3/4" MEDIUM OVAL (Cont.)

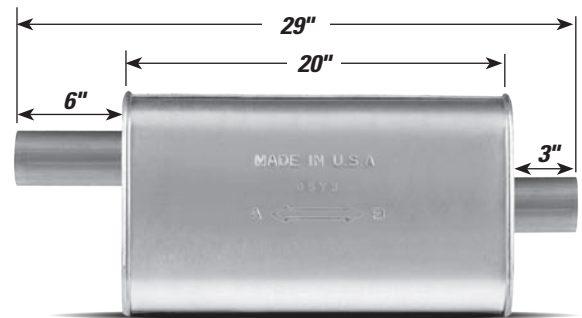
OFFSET/CENTER (4 1/4" x 8 3/4")



P/N	INLET	OUTLET
6496	2"	2"
6534	2 1/4"	2 1/4"
6494+	2 1/2"	2 1/2"

+ Replaces 2940

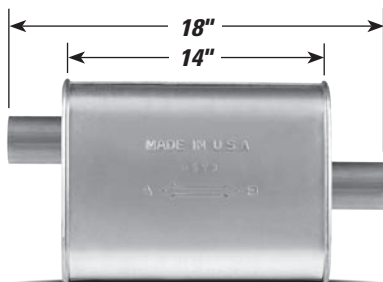
OFFSET/CENTER (4 1/4" x 8 3/4")



P/N	INLET	OUTLET
6491	2 1/4"	2 1/4"

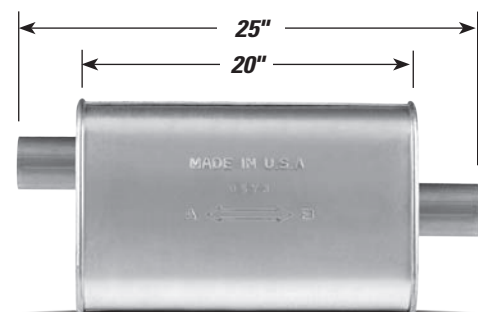
4 1/16" x 10 1/2" LARGE OVAL

OFFSET/CENTER (4 1/16" x 10 1/2")



P/N	INLET	OUTLET
690501	2"	2"
690500	2 1/4"	2 1/4"
690503	2 1/2"	2 1/2"

OFFSET/CENTER (4 1/16" x 10 1/2")



P/N	INLET	OUTLET
6493+	2 1/4"	2 1/4"

+ Replaces 2973. Hemi muffler w/ crushed corners

BIG MAX® PERFORMANCE TURBO

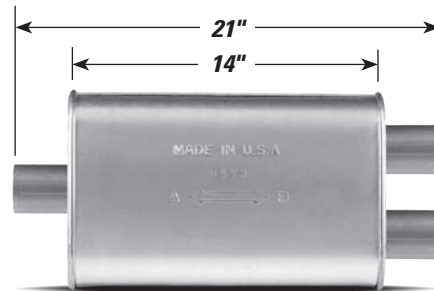
4 1/16" x 10 1/2" LARGE OVAL (Cont.)

OFFSET/CENTER (4 1/16" x 10 1/2")



P/N	INLET	OUTLET
690502	3"	3"

CENTER/DUALS (4 1/16" x 10 1/2")



P/N	INLET	OUTLET
690513	2 1/2"	2 1/4"
690514	2 1/2"	2 1/2"
690510	3"	2 1/4"
690511	3"	2 1/2"

4 1/2" x 11" EXTRA LARGE OVAL

CENTER/DUALS (4 1/2" x 11")



P/N	INLET	OUTLET
690512	3"	3"

CHEVROLET/GMC MUFFLERS

1500, 2500, 3500 HeavyDuty 6.0 & 8.1 Litre Gas Engines

PERFORMANCE FEATURES

- All welded construction
- High flow design
- Better performance
- Heavy gauge 100% aluminized steel
- Increased flow
- Excellent performance sound

8 1/2" x 11 3/4"

DUAL OUTLETS FIT OEM TAIL PIPE (8 1/2" x 11 3/4")



INLET

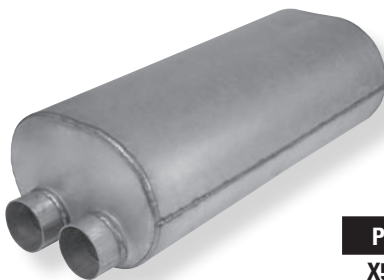


OUTLET

P/N	SHELL	OAL	INLET	OUTLET
2500	24 1/2"	29"	3" ID Duals	3" OD Duals

- Dual Outlets Fit OEM Tailpipe
- Original Equipment Tuning for OE Sound

SINGLE OUTLET PERFORMANCE OPTION (8 1/2" x 11 3/4")



INLET



OUTLET

P/N	SHELL	OAL	INLET	OUTLET
X503	24 1/2"	29"	3" ID Duals	3" ID

- Use with Xlerator Mandrel Bent Tailpipe X6007 or MaxFit Tailpipe 126584
- Performance Sound on Single Outlet 3" Tailpipe

DUAL OUTLET PERFORMANCE OPTION (8 1/2" x 11 3/4")



INLET



OUTLET

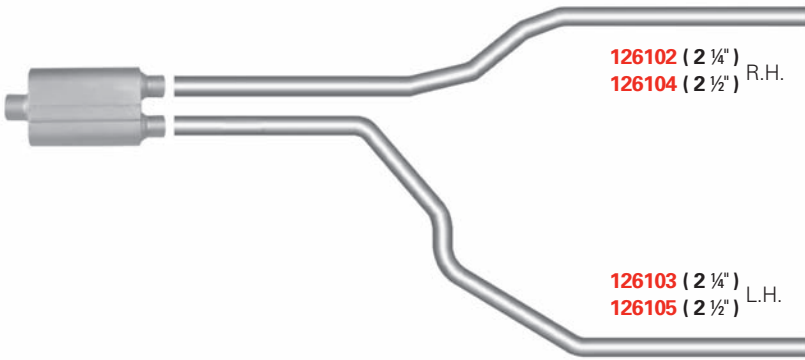
P/N	SHELL	OAL	INLET	OUTLET
X504	24 1/2"	30 1/2"	3" ID Duals	2 1/2" ID Duals

- Full Performance Sound when used with Xlerator Mandrel Bent Tailpipe No.'s X6013 (LS) and X6014 (RS) or Use MaxFit Tailpipes 127670 (LS) and 127671 (RS)

POPULAR OPTIONS FOR DUALING PICKUP TRUCKS

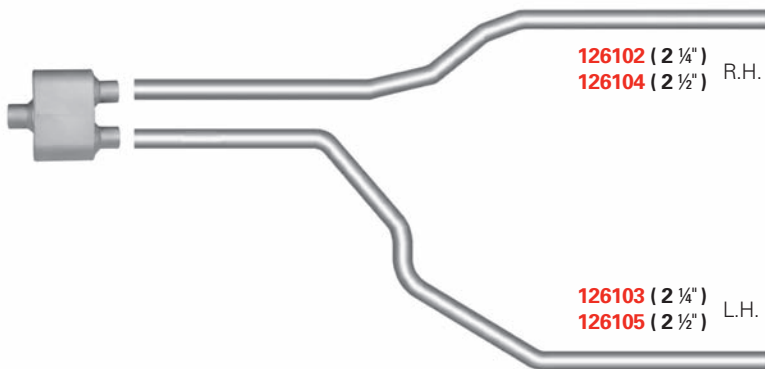
Mandrel Bent Pipes are available.

CHEVY/GMC, DODGE, FORD



P/N	INLET	OUTLET	BRAND
XS1149	2 1/4"	2 1/4" Duals	XLERATOR
XS2157	2 1/2"	2 1/4" Duals	XLERATOR
XS2158	2 1/2"	2 1/2" Duals	XLERATOR
XS2198	3"	2 1/2" Duals	XLERATOR
VX0422	3"	2 1/4" Duals	VX
VX4422	2 1/4"	2 1/4" Duals	VX
VX5400	2 1/2"	2 1/2" Duals	VX
VX5422	2 1/2"	2 1/4" Duals	VX
690513	2 1/2"	2 1/4" Duals	TURBO
690514	2 1/2"	2 1/2" Duals	TURBO
690510	3"	2 1/4" Duals	TURBO
690511	3"	2 1/2" Duals	TURBO

CHEVY/GMC, DODGE, FORD



P/N	INLET	OUTLET	BRAND
VR7425	2 1/2"	2 1/4" Duals	VR
VR7427	3"	2 1/2" Duals	VR

