



# UNIVERSAL TIP CATALOG



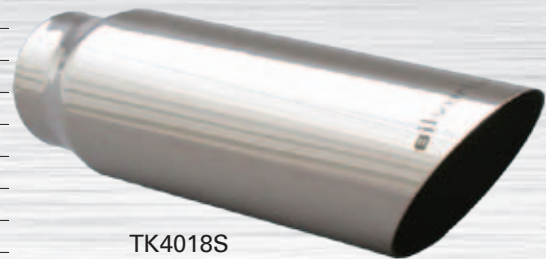


# SILVERLINE TIPS WITH LOGO

## STAINLESS TRUCK TIPS

### 45° SLASH CUT ANGLE TIPS WITH NECK

PART NO.	INLET ID	OUTLET DIAMETER	OVERALL LENGTH
TK3012S	2 1/4"	3"	12"
TK3018S	2 1/4"	3"	18"
TK3022S	2 1/4"	3"	22"
TK3512S	2 1/4"	3 1/2"	12"
TK3518S	2 1/4"	3 1/2"	18"
TK3522S	2 1/4"	3 1/2"	22"
TK3518S25	2 1/2"	3 1/2"	18"
TK3522S25	2 1/2"	3 1/2"	22"
TK4012S	2 1/4"	4"	12"
TK4018S	2 1/4"	4"	18"
TK4022S	2 1/4"	4"	22"
TK4018S25	2 1/2"	4"	18"



TK4018S

All Silverline TK Tips are Premium Quality T304 Polished Stainless and feature the Silverline™ Logo.

### 20° ANGLE ROLLED TIPS WITH NECK

PART NO.	INLET ID	OUTLET DIAMETER	OVERALL LENGTH
TK3012SR	2 1/4"	3"	12"
TK3018SR	2 1/4"	3"	18"
TK3022SR	2 1/4"	3"	22"
TK3512SR	2 1/4"	3 1/2"	12"
TK3518SR	2 1/4"	3 1/2"	18"
TK3522SR	2 1/4"	3 1/2"	22"
TK3512SR25	2 1/2"	3 1/2"	12"
TK3518SR25	2 1/2"	3 1/2"	18"
TK3522SR25	2 1/2"	3 1/2"	22"
TK4012SR	2 1/4"	4"	12"
TK4018SR	2 1/4"	4"	18"
TK4022SR	2 1/4"	4"	22"
TK4018SR25	2 1/2"	4"	18"



TK3512SR

SILVERLINE

All Silverline TK Tips are Premium Quality T304 Polished Stainless and feature the Silverline™ Logo.

## DIESEL TRUCK TIPS

### ROLLED ANGLE TRUCK TIPS

PART NO.	INLET ID	OUTLET DIAMETER	OVERALL LENGTH
TK4012SR35	3 1/2"	4"	12" Without Bolt
TK5012SR	4"	5"	12" Without Bolt
TK5012SRB	4"	5"	12" With Bolt
TK5012SRB5	5"	5"	12" With Bolt
TK6018SRB	4"	6"	18" With Bolt
TK6018SRB5	5"	6"	18" With Bolt



TK6018SRB

All Silverline TK Tips are Premium Quality T304 Polished Stainless and feature the Silverline™ Logo.



### DOUBLE WALL TRUCK TIPS

PART NO.	INLET ID	OUTLET DIAMETER	OVERALL LENGTH
TK5012DWB	4"	5"	12" Pencil Cut with Bolt
TK5012DWBS	4"	5"	12" Slant Cut with Bolt

All Silverline TK Tips are Premium Quality T304 Polished Stainless and feature the Silverline™ Logo.

### TURN DOWN TRUCK TIPS

PART NO.	INLET ID	OUTLET DIAMETER	OVERALL LENGTH
TK4012TDB	4"	4"	12" With Bolt
TK5012TDB4	4"	5"	12" With Bolt

All Silverline TK Tips are Premium Quality T304 Polished Stainless and feature the Silverline™ Logo.





# SILVERLINE TIPS WITH LOGO

## SPECIALTY TIPS - T304 STAINLESS

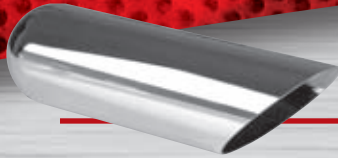
	PART NO.	INLET ID	OUTLET	OVERALL LENGTH	STYLE
	TK7840	2 1/2"	6" x 2"	10"	Camaro "seamless"
	TK7850	2 1/2"	7 3/4" x 2"	10"	Camaro "seamless"
	TK7860	2 1/4"	7 3/4" x 2"	10"	Camaro "seamless", offset center
	TK7809	2 1/4"	3"	7"	Beveled Inner
	TK7819	2 1/4"	4 1/2" x 3"	7"	Oval Double Wall
	TK7839	2 1/2"	5 1/4" x 3 1/4"	7 1/2"	Oval
	TK7855	2 1/4"	3" x 4"	7"	Oval Rolled

## **SPECIALTY TIPS - T304 STAINLESS**

PART NO.	INLET ID	OUTLET	OVERALL LENGTH	STYLE	
TK7864C	3"	3 1/2"	9 1/2"	Chrome Over, Angle	
TK7865C	2 1/2"	3 1/2"	5 1/2"	Chrome Over, Angle	
TK7867C	2 3/8"	4 1/2" x 3 1/2"	5 1/2"	Chrome Over, Oval	
TK7868C	2 1/2"	3 1/2"	16"	Chrome Over, Angle	
TK7869C	2 1/2"	3" x 2 1/2"	10"	Chrome Over, Dual Oval	
TK9001	2 1/2"	3"	4"	Chrome Over, Angle	
TK9002	2 1/2"	3"	9 3/4"	Chrome Over Offset Dual - Right	
TK9003	2 1/2"	3"	9 3/4"	Chrome Over Offset Dual - Left	
TK9004	2 1/2"	3"	9 3/4"	Chrome Over Angle Dual, Left or Right	



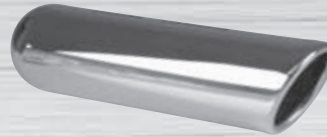
# SILVERLINE TIPS *NO LOGO*



## T304 STAINLESS TIPS

### 45° ANGLE CUT TIPS

PART NO.	INLET ID	OVERALL SIZE
XSAC200	2"	9" x 2 1/4"
XSAC214	2 1/4"	9" x 2 1/2"
XSAC212	2 1/2"	9" x 2 3/4"
XSAC312214	2 1/4"	12" x 3"
XSAC316	2"	16" x 3"
XSAC316214	2 1/4"	16" x 3"
XSAC318	2 1/4"	18" x 3"
XSAC318212	2 1/2"	18" x 3"
XSAC324	2 1/2"	24" x 3"
XSAC31212	2 1/4"	12" x 3 1/2"
XSAC31216	2 1/4"	16" x 3 1/2"
XSAC31218	2 1/4"	18" x 3 1/2"
XSAC31218212	2 1/2"	18" x 3 1/2"
XSAC31222	2 1/4"	22" x 3 1/2"
XSAC31222212	2 1/2"	22" x 3 1/2"
XSAC412	2 1/2"	12" x 4"
XSAC418	2 1/2"	18" x 4"
XSAC422214	2 1/4"	22" x 4"



### INSIDE ROLL - ANGLE CUT TIPS

PART NO.	INLET ID	OVERALL SIZE
XSRAC316	2 1/4"	16" x 3"
XSRAC31212	2 1/4"	12" x 3 1/2"
XSRAC31216	2 1/4"	16" x 3 1/2"
XSRAC31218	2 1/4"	18" x 3 1/2"
XSRAC31222	2 1/2"	22" x 3 1/2"
XSRAC418	2 1/2"	18" x 4"



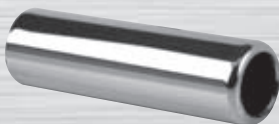
### INSIDE ROLL - STRAIGHT CUT TIPS

PART NO.	INLET ID	OVERALL SIZE
XSRPT50124	4" Bolt On	12" x 5"
XSRPT50125	5" Bolt On	12" x 5"



### INSIDE ROLL - ANGLE CUT TIPS

PART NO.	INLET ID	OVERALL SIZE
XSBRAC40124	4" Bolt On	12" x 4"
XSBRAC50124	4" Bolt On	12" x 5"
XSBRAC50125	5" Bolt On	12" x 5"
XSBRAC50184	4" Bolt On	18" x 5"
XSBRAC50185	5" Bolt On	18" x 5"
SV5012SR	4" No Bolt	12" x 5"



### PENCIL TIPS

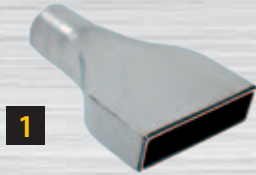
PART NO.	INLET ID	OVERALL SIZE
XSRPT200	2"	9" x 2 1/4"
XSRPT214	2 1/4"	9" x 2 1/2"
XSRPT212	2 1/2"	9" x 2 3/4"



### TURN-DOWN TIPS

PART NO.	INLET ID	OVERALL SIZE
XSTD300	3"	16" x 3"
XSTD312	3 1/2"	16" x 3 1/2"
XSTD400	4"	18" x 4"

## T304 STAINLESS SPECIALTY TIPS



1



2



3



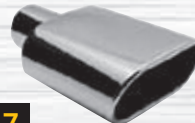
4



5



6



7



8

### SPECIALITY TIPS

PART NO.	INLET ID	OVERALL SIZE	TYPE
SV7840	2 1/2"	6" x 2" - OAL 10"	1
XSCAM214	2 1/4"	7 3/4" x 2" - OAL 10"	1
XSCAM212	2 1/2"	7 3/4" x 2" - OAL 10"	1
XSSDW4128	2 1/4"	9" x 4 1/2"	2
XSDW3002	2"	6 1/4" x 3"	3
XSDW41210	2 1/4"	3 1/4" x 3 3/4" - OAL 7"	4
XSRPT3507	2 1/4"	7" x 3 1/2"	4
XSOR512	2 1/2"	5 1/4" x 3 1/4" - OAL 7 1/2"	5
XSMS625L	2 1/4"	6 1/4" x 3 3/4" - OAL 12"	6
XSMS625R	2 1/4"	6 1/4" x 3 3/4" - OAL 12"	6
XSR5600	2 1/4"	6" Oval - OAL 9"	7
SV7866	2 1/2"	4" - OAL 7"	8



# SILVERLINE TIPS *NO LOGO*

## T304 STAINLESS SPECIALTY TIPS



### CHEVY BOWTIE TIPS

PART NO.	INLET ID	OVERALL SIZE
XSCB214	2 1/4"	8" x 4 3/4"
XSCB212	2 1/2"	8" x 4 3/4"
XSCB300	3"	8" x 4 3/4"



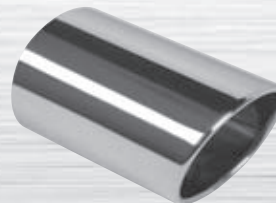
### HONDA/ACURA TIP - TAP ON

PART NO.	INLET ID	OVERALL SIZE
9816	For 1 1/2" Pipe	5 1/2" x 1 1/2"



### IMPALA TIP - BOLT ON

PART NO.	INLET ID	OVERALL SIZE
ST1253S	2 1/4"	5 1/2" x 3"



### TOYOTA/LEXUS TIP

PART NO.	INLET ID	OUTLET	LENGTH
9850	w/ Mounting Saddle for 2" Pipe	2 3/4" x 3 7/16"	5 1/16"

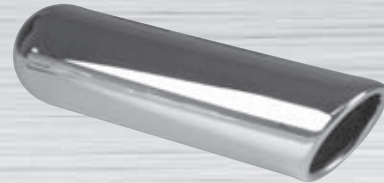


## CHROME TIPS



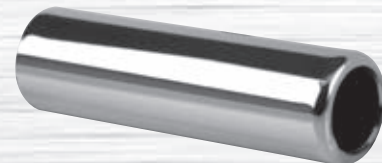
### 45° ANGLE CUT TIPS

PART NO.	INLET ID	OVERALL SIZE
XAC112	1 1/2"	8" x 1 3/4"
XAC134	1 3/4"	8" x 2"
XAC200	2"	9" x 2 1/4"
XAC214	2 1/4"	9" x 2 1/2"
XAC212	2 1/2"	9" x 2 3/4"
XAC312	2"	12" x 3"
XAC312214	2 1/4"	12" x 3"
XAC316	2"	16" x 3"
XAC316214	2 1/4"	16" x 3"
XAC3163	3"	16" x 3"
XAC322	2"	22" x 3"
XAC3223	3"	22" x 3"
XAC324	2"	24" x 3"
XAC324214	2 1/4"	24" x 3"
XAC31212	2 1/4"	12" x 3 1/2"
XAC31216	2 1/4"	16" x 3 1/2"
XAC312163	3"	16" x 3 1/2"
XAC31218	2 1/4"	18" x 3 1/2"
XAC31222	2 1/4"	22" x 3 1/2"
XAC31222212	2 1/2"	22" x 3 1/2"
XAC312223	3"	22" x 3 1/2"
XAC412	2 1/2"	12" x 4"
XAC412312	3 1/2"	12" x 4"
XAC4124	4"	12" x 4"
XAC416312	3 1/2"	16" x 4"
XAC418	2 1/2"	18" x 4"
XAC4183	3"	18" x 4"
XAC4184	4"	18" x 4"
XAC422	2 1/2"	22" x 4"
XAC4223	3"	22" x 4"
XAC424	2 1/2"	24" x 4"
XAC5124	4"	12" x 5"
XAC518	2 1/2"	18" x 5"
XAC5184	4"	18" x 5"
XAC524	2 1/2"	24" x 5"
XAC6184	4"	18" x 6"



### INSIDE ROLL - ANGLE CUT TIPS

PART NO.	INLET ID	OVERALL SIZE
XRAC312	2"	12" x 3"
XRAC316	2"	16" x 3"
XRAC324	2"	24" x 3"
XRAC31212	2 1/4"	12" x 3 1/2"
XRAC312123	3"	12" x 3 1/2"
XRAC31216	2 1/4"	16" x 3 1/2"
XRAC31218	2 1/4"	18" x 3 1/2"
XRAC31222	2 1/4"	22" x 3 1/2"
XRAC412	2 1/2"	12" x 4"
XRAC418	2 1/2"	18" x 4"
XRAC422	2 1/2"	22" x 4"



### INSIDE ROLL - PENCIL TIPS

PART NO.	INLET ID	OVERALL SIZE
XRPT134	1 3/4"	8" x 2 1/2"
XRPT200	2"	9" x 2 1/4"
XRPT214	2 1/4"	9" x 2 1/2"
XRPT212	2 1/2"	9" x 2 3/4"
XRPT3006	2"	6" x 3"
XRPT3506	2 1/4"	6" x 3 1/2"
XRPT4006	2 1/2"	6" x 4"
XRPT4012	2 1/2"	12" x 4"
XRPT4018	2 1/2"	18" x 4"
XRPT5012	2 1/2"	12" x 5"
XRPT5018	2 1/2"	18" x 5"
XRPT3512	2 1/4"	12" x 3 1/2"
XRPT35123	3"	12" x 3 1/2"
XRPT4012312	3 1/2"	12" x 4"

# SILVERLINE TIPS *NO LOGO*

## CHROME TIPS



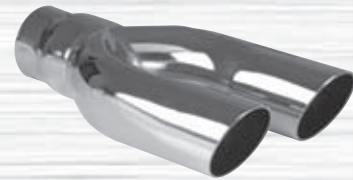
### PENCIL TIPS

PART NO.	INLET ID	OVERALL SIZE
XPT112	1 1/2"	8" x 1 3/4"
XPT134	1 3/4"	8" x 2"
XPT200	2"	9" x 2 1/4"
XPT214	2 1/4"	9" x 2 1/2"
XPT212	2 1/2"	9" x 2 3/4"
XPT312	2"	12" x 3"
XPT3123	3"	12" x 3"
XPT316	2"	16" x 3"
XPT3203	3"	20" x 3"
XPT324	2"	24" x 3"
XPT31212	2 1/4"	12" x 3 1/2"
XPT312123	3"	12" x 3 1/2"
XPT31218	2 1/4"	18" x 3 1/2"
XPT31220	2 1/4"	20" x 3 1/2"
XPT312203	3"	20" x 3 1/2"
XPT4124	4"	12" x 4"
XPT416	2 1/2"	16" x 4"
XPT4184	4"	18" x 4"



### DUAL PENCIL TIP

PART NO.	INLET ID	OVERALL SIZE
XDP200	2"	11" x 5 1/2" (outlet 2 1/4")



### DUAL ANGLE CUT TIP

PART NO.	INLET ID	OVERALL SIZE
XDA200	2"	11" x 5 1/2" (outlet 2 1/4")



### TURN DOWN TIPS

PART NO.	INLET ID	OVERALL SIZE
XTD112	1 1/2"	8" x 1 3/4"
XTD134	1 3/4"	8" x 2"
XTD200	2"	9" x 2 1/4"
XTD214	2 1/4"	11" x 2 1/2"
XTD212	2 1/2"	13" x 2 1/2"



### SPECIALTY TURN DOWN TIP - BOLT ON

PART NO.	INLET ID	LENGTH
9818	1 7/8"	11"

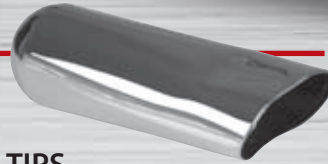


## CHROME TIPS



SPECIALTY CHROME TIPS - BOLT ON

PART NO.	INLET ID	LENGTH
9821	1 1/2"	5 1/4"
9822	1 3/4"	5 1/4"
9817	1 7/8"	3 3/8"
9820	2"	5 1/4"
9819	2 1/4"	5 1/4"



CHEVELLE TIPS

PART NO.	INLET ID	OUTLET	OVERALL LENGTH	PIPE DIAMETER
XWS200	2"	1 3/4" x 3"	7"	2 1/2"
XWT200	2"	1 3/4" x 3 3/4"	9"	3"
XWT212	2 1/2"	1 3/4" x 3 3/4"	9"	3"
XBT200	2"	2" x 3"	9"	3"
XST200	2"	2 3/4" x 2 7/8"	12"	3"
XWT214	2 1/4"	1 3/4" x 3 3/4"	9"	3"
XCT410	2 1/2"	1 3/4" x 4"	10"	4"



DUAL TRANS AM TIP

PART NO.	INLET ID	OUTLET
XDT214	2 1/4"	12" x 2 1/2"



FOREIGN CAR TIPS

PART NO.	INLET ID	OUTLET
XFC112	1 1/2"	6" x 1 3/4"
XFC134	1 3/4"	6" x 2"
XFC200	2"	6" x 2 1/4"

## TAIL SPOUTS



STYLE A

STYLE B

NAT = No Angle Trim (outlet)

PART NO. ALUMINIZED STYLE A (OD)	PART NO. CHROME STYLE A (OD)	PART NO. ALUMINIZED STYLE B (ID)	PART NO. CHROME STYLE B (ID)	DIAMETER	LENGTH
10921	--	--	--	2"	8" NAT
20824	--	--	--	2"	15" NAT
14342	--	--	--	2 1/4"	12"
14343	--	--	--	2 1/2"	10"
14634	--	--	--	2 3/4"	12"
24344	--	14618	814621	3"	12"
--	--	--	824000	3"	18"
24345	--	14619	814622	3 1/2"	12"
--	--	24938	824001	3 1/2"	18"
24346	--	14620	814620	4"	12"
24717	824720	24713	824718	4"	18"
24718	824723	24714	824717	5"	18"
24347	--	24672	824673	5"	20"
--	--	24696	--	6"	20"

Recommended for passenger cars and trucks not equipped with a tail pipe. Can also be used with tractor mufflers to deflect exhaust gases away from the operator. For horizontal or vertical mounting.