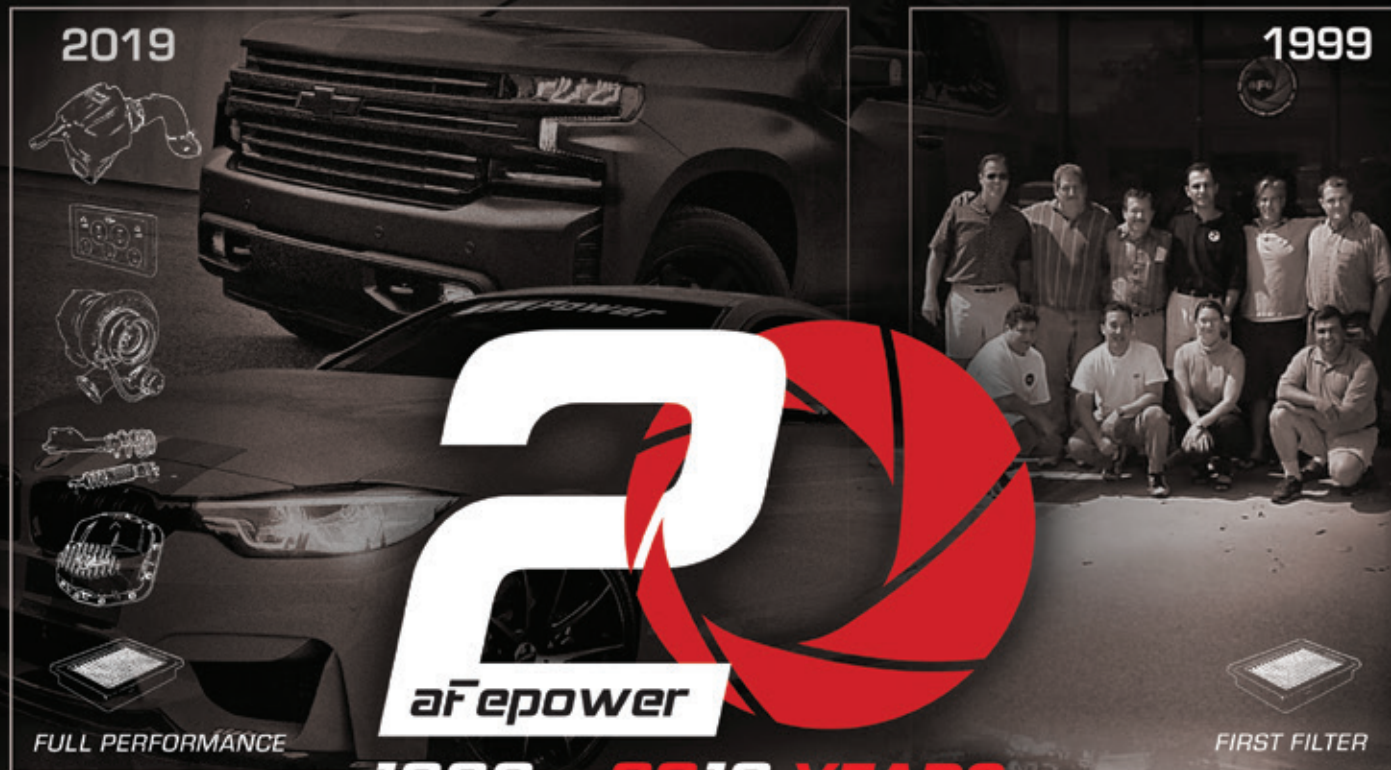




*advanced FLOW engineering*

*THIS IS WHAT WE DO*



**1999 - 2019 YEARS**



***In 1999, advanced FLOW engineering was born.***

What started as a dream and a passion for automobiles led us on this exciting journey. In the beginning, we had a vision for what an air filter should be and what you see is the result of that vision. From the filter media to the urethane frames to the seal design, no stone was left unturned. Our attention to detail is evident in our filters, and in every product we design and produce. Now in our 20th year, that same approach is carried through all our product lines. Our Cold Air Intake Systems, Exhaust Systems, and other product lines are second to none, all built in our 160,000+ sq. ft. facility in Corona, California, and we continue to grow. Exciting and recent acquisitions have expanded our portfolio into the Suspension and Tuning markets, allowing us to provide even more solutions and high-quality products for true automotive enthusiasts.

Our growth and continued success would not be possible without the right team of people. We share the same dream, vision, and passion for performance. This united front is what allows us to create such exciting and compelling products. From our design and engineering teams who create the product, to the manufacturing staff who build it, to all our support staff who manage the purchasing, sales, marketing, customer service, and accounting — everyone plays a key role in the success of aFe.

Thank you to our customers for your continued support of aFe and for celebrating with us in our 20th year in the automotive after-market. This, our 20th year catalog shows how far we've come and includes our full product line for you to see. This is what we do.

*SN<sup>2</sup>*

Shahriar "Nick" Niakan  
President & CEO

## **CONTENTS:**

Who We Are .....	2	We Build It: Electronic Modules .....	18
Innovate or Die .....	4	Platform: American Muscle .....	20
Proving Grounds .....	6	Platform: Gas Truck .....	22
We Build It: Performance Air Filters ....	8	Platform: Jeep We Do It .....	24
We Build It: Cold Air Intakes .....	10	Platform: Sport Compact .....	26
We Build It: Exhaust Systems .....	12	Platform: Diesel Power .....	28
We Build It: Suspension & Control .....	14	Platform: Eurotrip .....	30
We Build It: Serious Power .....	16	Online Presence: Go to the Source ....	32





# WHO WE ARE





# INNOVATE OR DIE

## DRIVEN BY RESEARCH & DEVELOPMENT

*Superior products are the foundation of aFe POWER.*

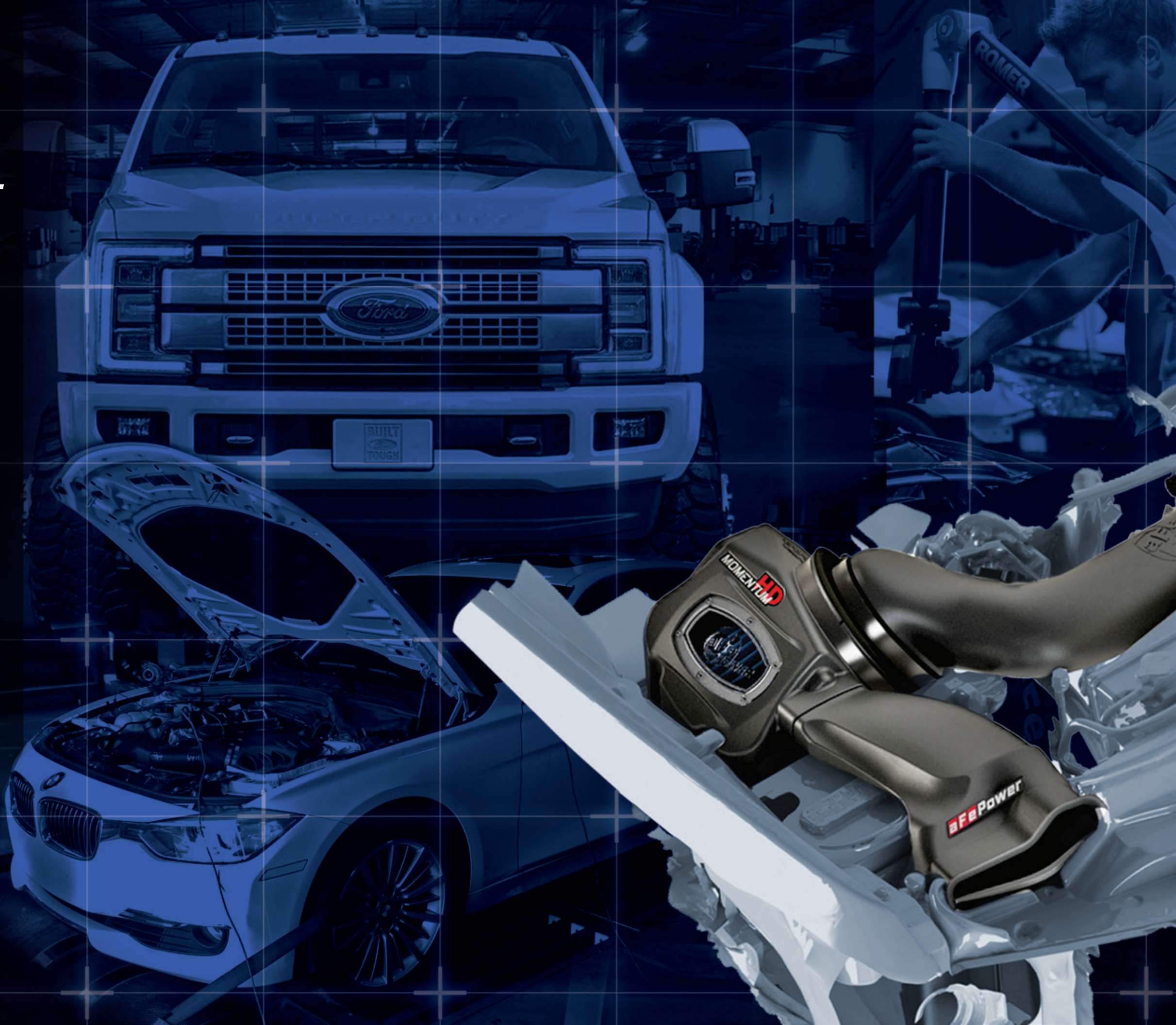
*We are in the business to create the most exciting,  
highly engineered products in the world.*

*Our products excel in every way — the installation,  
the fit, and the performance are benchmarks in  
the automotive after-market industry.*

*When you bolt on an aFe POWER product, you get  
more than just performance — you get perfection.*

*With full-time teams of engineers dedicated to  
specific product groups, our products are designed  
to fit a specific vehicle year, make, and model range.*

*Our extensive research and development programs  
put products to the test on our in-house dyno as well  
as on the street, the track, and off-road, to ensure  
performance improvements over stock.*



POWER UP

FLOW

TQ

HP

268.76 ft-lbs  
295.11 ft-lbs

292.39  
303.96

13.21 Air/Fuel  
13.22 Air/Fuel

CF: SAE Smoothing

CF: SAE



# PROVING GROUNDS

"IT DOESN'T LEAVE HERE UNTIL IT'S PROVEN TO MAKE POWER."

Field tested to ensure performance improvements



THE INFORMATION CONTAINED IN THIS DRAWING IS THE SOLE PROPERTY OF ADVANCED FLOW ENGINEERING, INC. ANY REPRODUCTION IN PART OR IN WHOLE WITHOUT THE WRITTEN PERMISSION OF ADVANCED FLOW ENGINEERING, INC. IS PROHIBITED.



# PERFORMANCE AIR FILTERS

**FLOW IS OUR MIDDLE NAME**

Back in 1999, we set out to provide the ultimate air filter for OE replacement, racing, off-road, and universal applications. Today, our filters are the heart and soul of our industry-leading cold air intake systems.

advanced FLOW engineering, inc.  
TO BE LOCATED HERE  
FONT HEIGHT: 253 [6.43] [28 POINT]  
MINIMUM DEPTH: .010 [0.25]

▽[143.68]  
5.657

[253.34]  
89.91

[19.11]  
0.75

04-003842A  
FOR 24-91092

PART NUMBER TO BE  
APPROXIMATELY LOCATED HERE

[35.37]  
2X R1.393

[228.6]  
9.00

[261.52]  
2X R10.296

[280.57]  
2X R11.046

[266.6]  
2X R10.50

REVERSE LOGO TO BE  
APPROXIMATELY LOCATED HERE  
MINIMUM DEPTH: .010 [0.25]

[7.94]  
0.313  
LEAVE EDGE  
[3.18]  
2X 0.125



DETAIL B  
SCALE 4:1

5. DEBURR ALL OUTSIDE EDGES

4. TEXT FONT HEMI HEAD 426

3. METRIC TOLERANCES: X,±2.5, XX,±0.8, XXX,±0.25

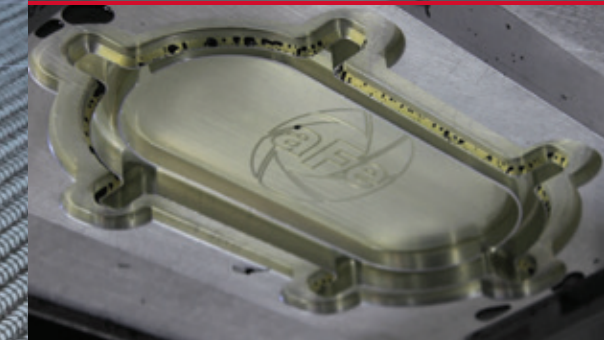
2. CRITICAL DIMENSIONS ±0.005[0.13]

1. REFER TO SOLID FILE FOR DIMENSIONS NOT SHOWN ±0.010[0.25] TOLERANCE

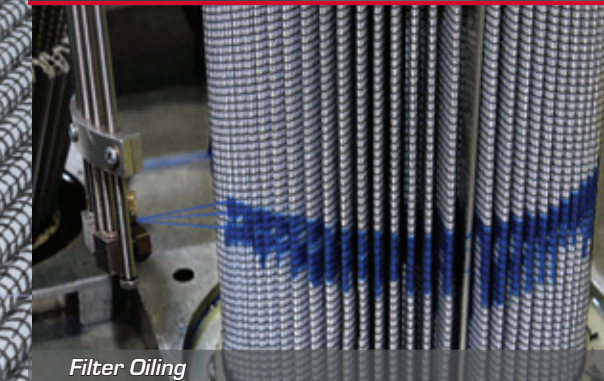
NOTES:



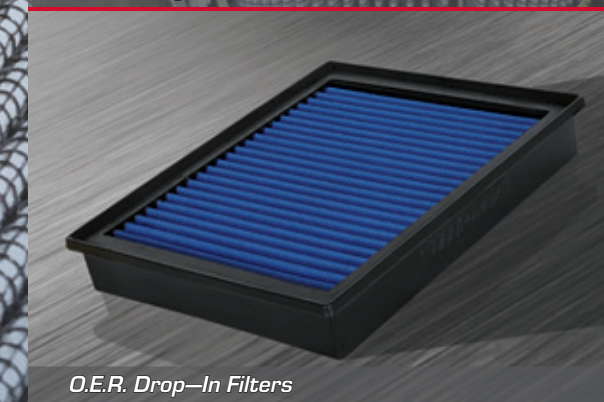
Pleating



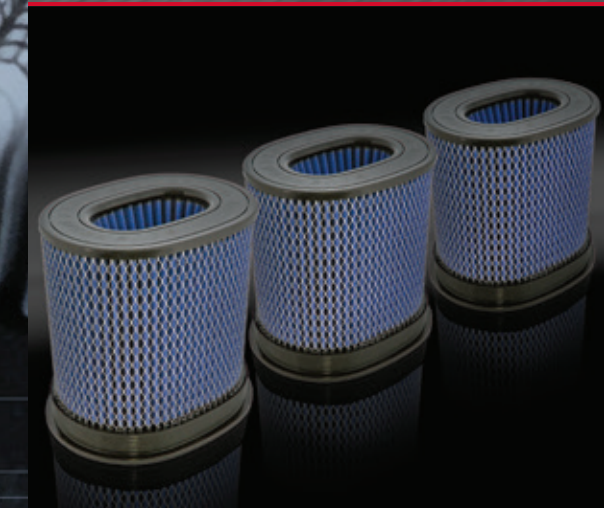
Innovative Production



Filter Oiling



O.E.R. Drop-In Filters



Massive 1,000 cfm Reinforced Intake Filters



# COLD AIR INTAKES

FLOW, **POWER** & STYLE

With innovative design processes and dyno-proven performance improvements on all of our systems, we're known for our cold air intakes — and for good reason... ..we make **POWER!**

STAGE-2



STAGE-2



Precision Scanning



C.A.D. Development



3D Printed Prototyping



In-House Roto-Molding



Innovative and Patented Designs



# EXHAUST SYSTEMS

**HANDCRAFTED IN THE U.S.A.**

*Performance, sound, and style that demand a presence — our exhaust systems are a direct reflection of our commitment to delivering quality products.*



*Fitting & Prototyping*



*Quality Materials*



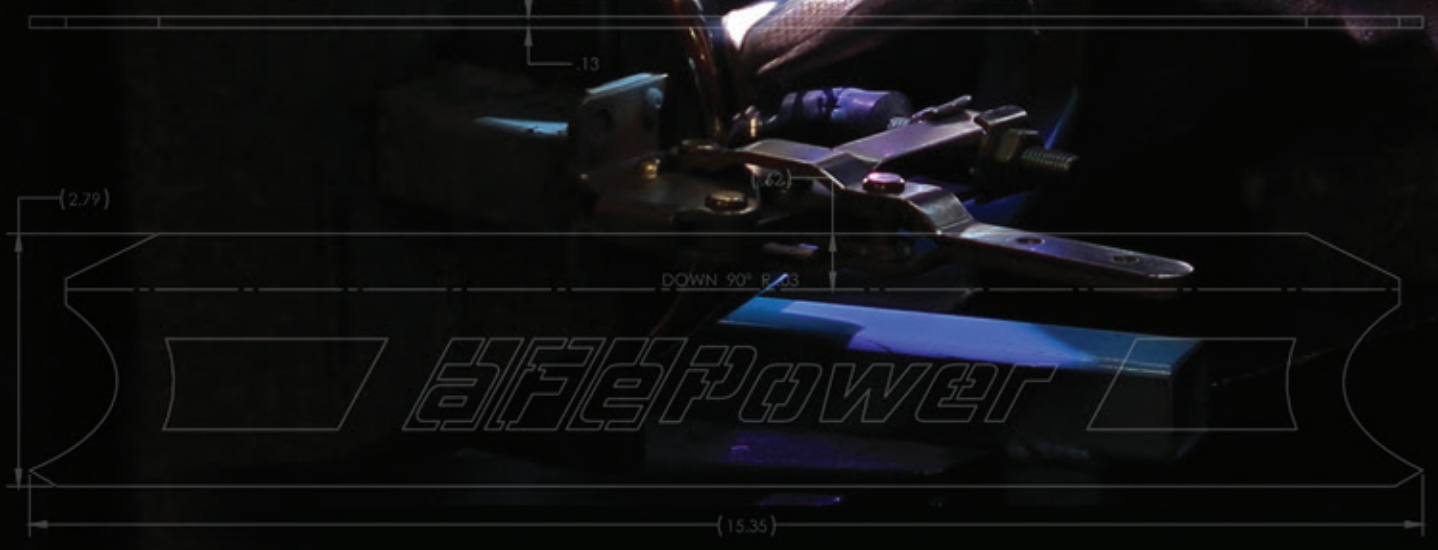
*Mandrel Bent for Unrestricted Flow*



*Handcrafted by Master Welders*



*Style, Sound and POWER!*







# SUSPENSION & CONTROL

## COMMAND THE ROAD

It's about how it performs and feels behind the wheel.

Our suspension products deliver excitement on-road, off-road, and on the track.

22.0  
0.0  
0.2  
0.865  
+0.000  
-0.008  
C5

A	INITIAL DWG RELEASE	3/3/15
	MODIFIED DIMENSION (C)	5/28/15
B	CHANGED REV TO B	7/7/15
	UPDATED DRAWING FORMAT, REDUCED WELD IN SHANK DIAMETER	1/15/16

SECTION A-A

25.2  
99  
14.3  
R.56



Expert-tuned



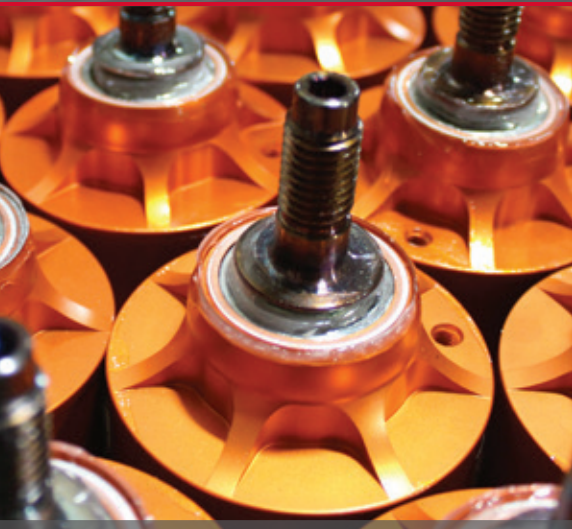
Sway Bars and Springs



Truck Shocks



Street and Track Performance



Ball on Axis Mounts

3 CRITICAL DIMENSIONS DENOTED WITH ▽

2 METRIC TOLERANCES: X. ±2.5, X.X ±0.8, X.XX ±0.25

1 DEBURR AND BREAK SHARP EDGES

NOTES:

MASS	0.3 lbs
TOTAL SURF AREA	7.8 sq in
VOLUME	cu in
PART ATTRIBUTES	

NEXT ASSY	USED ON
APPLICATION	

UNLESS OTHERWISE SPECIFIED, DIMENSIONS ARE IN INCHES. TOLERANCES ARE:	
DECIMALS	ANGLES
X ±.1	+/-
.XX ±.03	
.XXX ±.010	
MATERIAL	Plain Carbon Steel
FINISH	NONE

CAD GENERATED DRAWINGS. DO NOT MANUALLY UPDATE.	
APPROVALS	
DRAWN	Nate 1/15/2016
CHECKED	
APPROVED	
DO NOT SCALE DRAWING	

advanced FLOW engineering 252 GRANITE ST CORONA, CA 92879 (951) 493-7100 / (951) 493-7177	
SIZE	DWG. NO.
A	
SCALE	1:1
CAD FILE	



# SERIOUS POWER

## METICULOUSLY MADE

From turbochargers and cooling systems to protection products, our engineers are experts in our trade. Our attention to detail far surpasses the industry standard.



Fuel Systems



Radiators & Hose Kits



Intake & Exhaust Manifolds



Intercoolers & Tubes



Differential Covers & Oil/Trans Pans



# ELECTRONIC MODULES

## HORSEPOWER BOOST

Up your power and haul heavy loads with custom tunes and plug-and-play power modules. Use our in-depth displays and data loggers to monitor your vehicle's health and keep it operating at optimal performance levels.



Advanced Gauge Display (AGD) Monitor



Bluetooth®-Enabled Scorchers® BLUE



Sprint Booster — Increase Accelerator Response



Scorchers® BLUE — Bluetooth® Power Module



Scorchers® PRO — OBD II Tuner



Shift Logic® — Reduces Transmission Slippage



Brake Logic™ — Increases Engine Braking



# AMERICAN MUSCLE

## HORSEPOWER RUMBLE

*American muscle is American pride. With our performance electronics, induction, exhaust, and tuned suspension products, we offer more power and control for your late-model muscle car, all proudly developed and tested in the USA.*





# GAS TRUCK

## FORM MEETS FUNCTION

*It's not just a pickup. For work or play, your truck is your life. Whether it's a weekend trip off-roading, hauling, towing on the job, or driving your daily commute, we offer all the performance upgrades for your truck lifestyle.*



**SWAY-A-WAY**  
SWAY BAR TECHNOLOGY



# JEEP WE DO IT

## GO ANYWHERE

*Off-roading is more than just a hobby — it's a way of life.*

*That's why we develop parts for everything from daily drivers  
to those made for the most extreme off-road adventures.*



# SPORT COMPACT

## TAKEDA POWER

*It started as an aggressive debut into the Honda market, but this product has expanded to other sport compact makes.*

*We are dedicated to progressing the legendary performance heritage of the import world.*





# DIESEL POWER

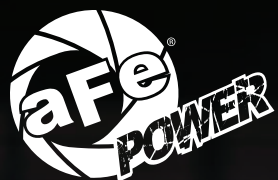
## IT'S ALL ABOUT **THE TORQUE**

*Just like you, we're not just looking for impressive numbers; rather, it's a quest for drivability and peak torque when you need it most.*

*We create top-of-the-line, dyno-proven products to up your diesel's already-impressive performance output.*





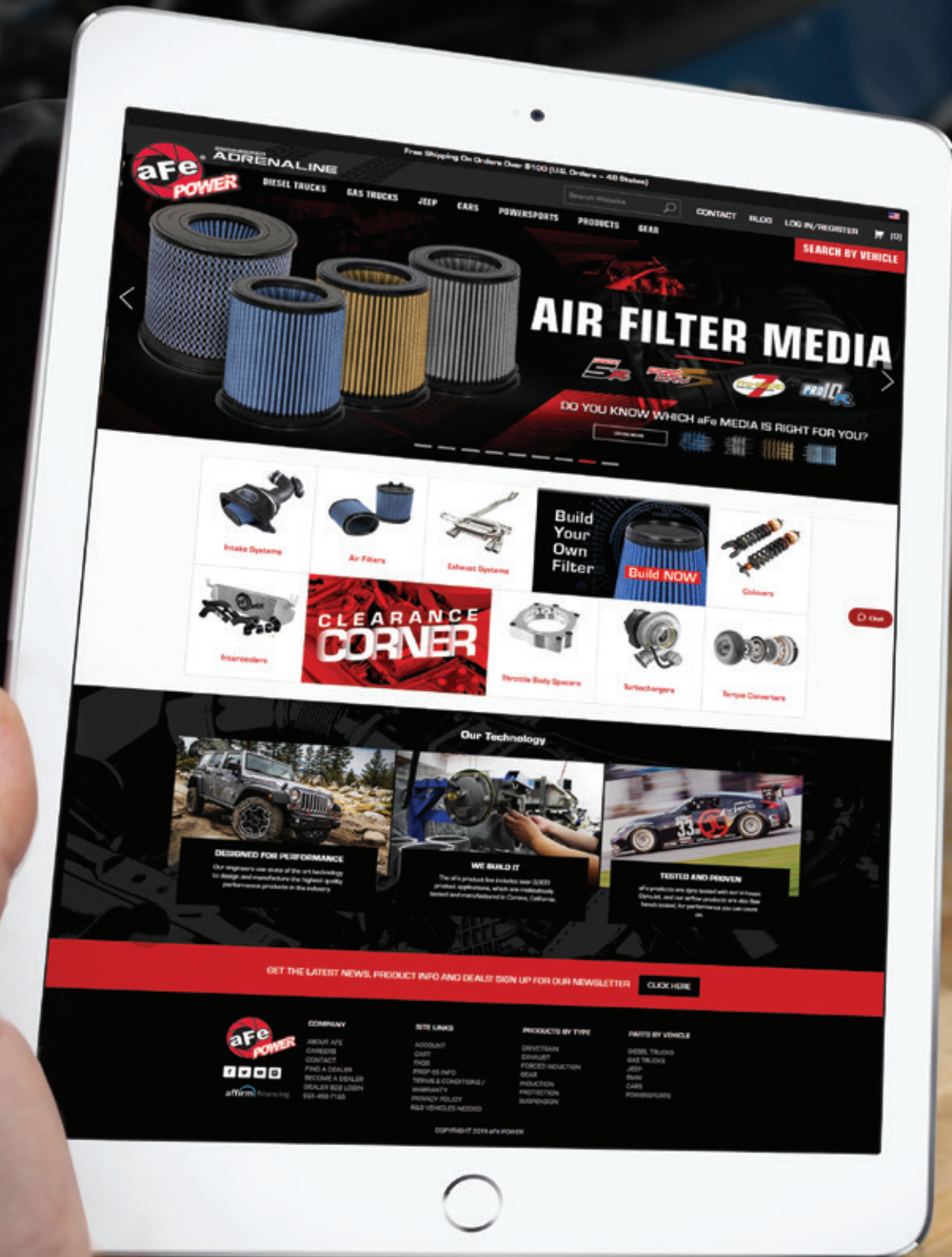




# EUROTRIP

## POWER REFINED

*"Power Refined" is a philosophy that drives us to deliver quality engineering blended with innovative power and suspension products for the like-minded enthusiast who's pursuing limitless freedom, technology, and style.*





Dodge / Ram			
GM			
Ford			
Nissan			
		<b>2500/3500</b>	<b>1500</b>
		13-18 Cummins 6.7L	14-18 EcoDiesel 3.0L
		10-12 Cummins 6.7L	
		07-09 Cummins 6.7L	
		03-07 Cummins 5.9L	

Search by Vehicle Platform

**Momentum Cold Air Intake And Scorcher Tuning Module Package**

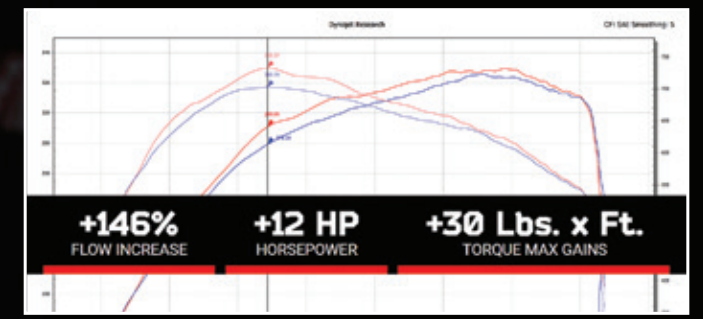
First used the science to bring the New Power Series 5.7L to a maximum 300 lbs x ft. of torque in stock with the fun to get beginning for 1-2000-2000 series with the aFe Power Performance Package Bundle together in the proven Momentum Cold Air Intake System and the Scorcher Module. Designed to work together to deliver an additional +85 lbs x ft. of torque with an initial time of 30-40 minutes. Improved passing power. Improved towing performance. Torque you can feel.

- Momentum Cold Air Intake System
- Scorcher Tuning Module - Pro Performance
- 100% Money Back Guarantee
- Includes a Cold Air Filter

**+21% Flow Increase**   **+50 HP**   **+98 Lbs x Ft.**



Detailed Product Descriptions



Verified Performance Numbers & Dyno Charts

**WHICH STAGE-2 IS RIGHT FOR YOU?**

Compare features to choose the right Stage-2 for your application.

STAGE 2	STAGE 2	STAGE 2
		
STAGE 2 AIR FILTER	STAGE 2 AIR FILTER	STAGE 2 AIR FILTER
FEATURES	FEATURES	FEATURES
SCREEN TYPE	OPEN ELEMENT	SEAL
SCREEN LEVEL	5/110	5/110
AIR FLOW	HIGH	HIGH
PERFORMANCE	HIGH	HIGH

Educational Buyer's Guides

**Quantum Cold Air Intake System w/Pre 50 Filter Media**

Quantum Cold Air Intake System. The aFe Power Performance Package Bundle together in the proven Momentum Cold Air Intake System and the Scorcher Module. Designed to work together to deliver an additional +85 lbs x ft. of torque with an initial time of 30-40 minutes. Improved passing power. Improved towing performance. Torque you can feel.

**+27% Flow Increase**   **+17 HP**   **+48 Lbs. x Ft.**



All You Need for Performance & Power

Learn more about performance air intake systems we have.

